



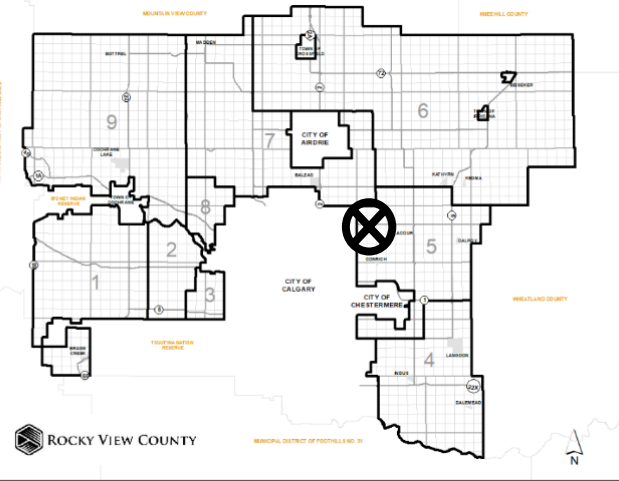
## Location & Context

### Redesignation Proposal

To redesignate the subject land from Residential, Rural District (R-RUR) to Special, Future Urban Development District (S-FUD), in order to facilitate the operation of Outdoor Storage.

Division: 5  
Roll: 05320006  
File: PL20200149  
Legal: Lot:1  
Block:1  
Plan 1611241  
SW-20-25-28-W04M

Printed: November 3, 2020





## Development Proposal

### Redesignation Proposal

To redesignate the subject land from Residential, Rural District (R-RUR) to Special, Future Urban Development District (S-FUD), in order to facilitate the operation of Outdoor Storage.

R-RUR → S-FUD  
(± 19.74 acres)

RGE RD 285



Division: 5  
Roll: 05320006  
File: PL20200149  
Legal: Lot:1  
Block:1  
Plan 1611241  
SW-20-25-28-W04M

Printed: November 3, 2020



## Environmental

### Redesignation Proposal

To redesignate the subject land from Residential, Rural District (R-RUR) to Special, Future Urban Development District (S-FUD), in order to facilitate the operation of Outdoor Storage.

-  Subject Lands
-  Contour - 2 meters
-  Riparian Setbacks
-  Alberta Wetland Inventory
-  Surface Water

Division: 5  
 Roll: 05320006  
 File: PL20200149  
 Legal: Lot:1  
 Block:1  
 Plan 1611241  
 SW-20-25-28-W04M

Printed: November 3, 2020



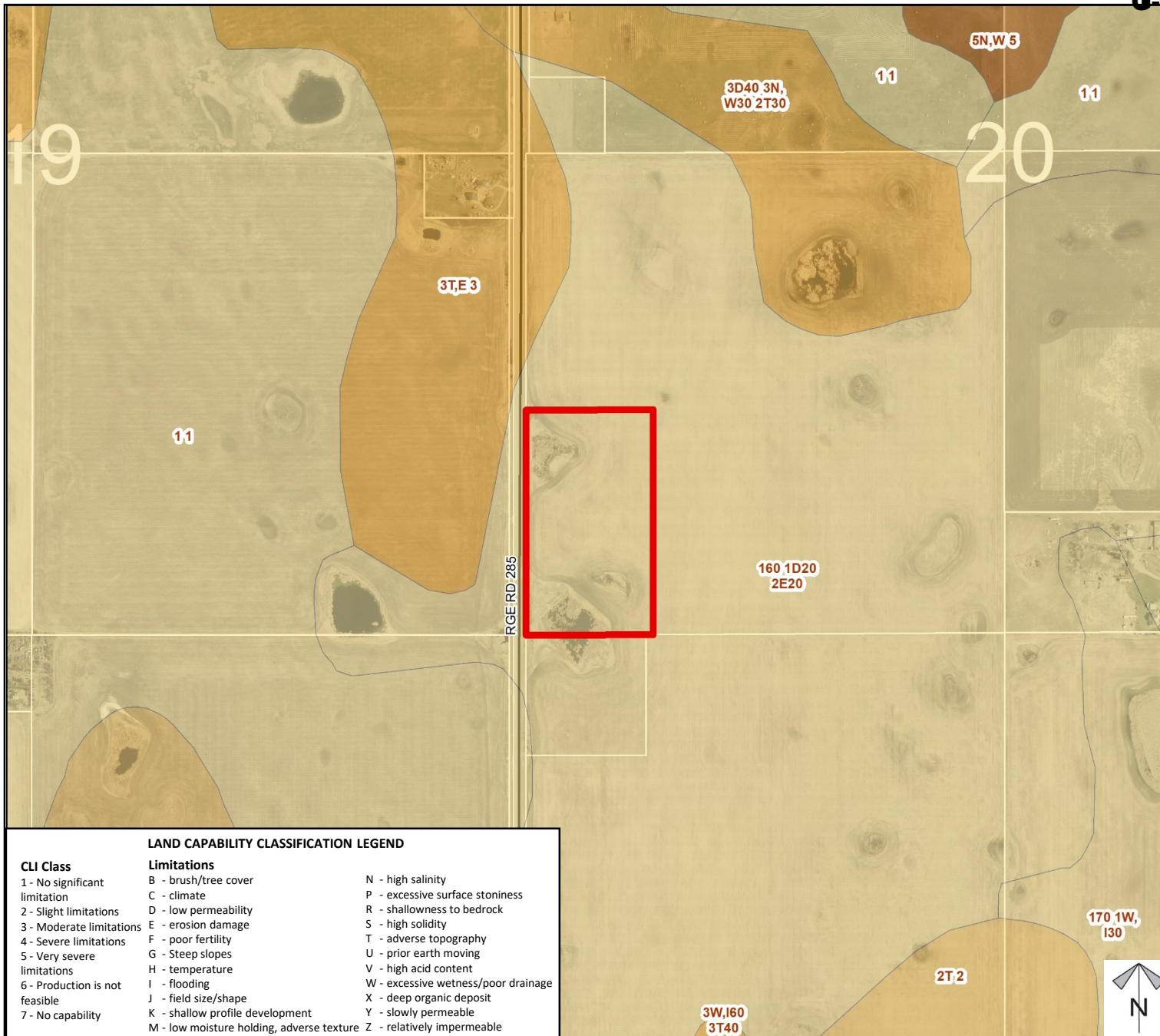




## Soil Classifications

### Redesignation Proposal

To redesignate the subject land from Residential, Rural District (R-RUR) to Special, Future Urban Development District (S-FUD), in order to facilitate the operation of Outdoor Storage.



Division: 5  
Roll: 05320006  
File: PL20200149  
Legal: Lot:1  
Block:1  
Plan 1611241  
SW-20-25-28-W04M

Printed: November 3, 2020



## Landowner Circulation Area

### Redesignation Proposal

To redesignate the subject land from Residential, Rural District (R-RUR) to Special, Future Urban Development District (S-FUD), in order to facilitate the operation of Outdoor Storage.

### Legend

Support



Opposition



Division: 5

Roll: 05320006

File: PL20200149

Legal: Lot:1

Block:1

Plan 1611241

SW-20-25-28-W04M

Printed: November 3, 2020

