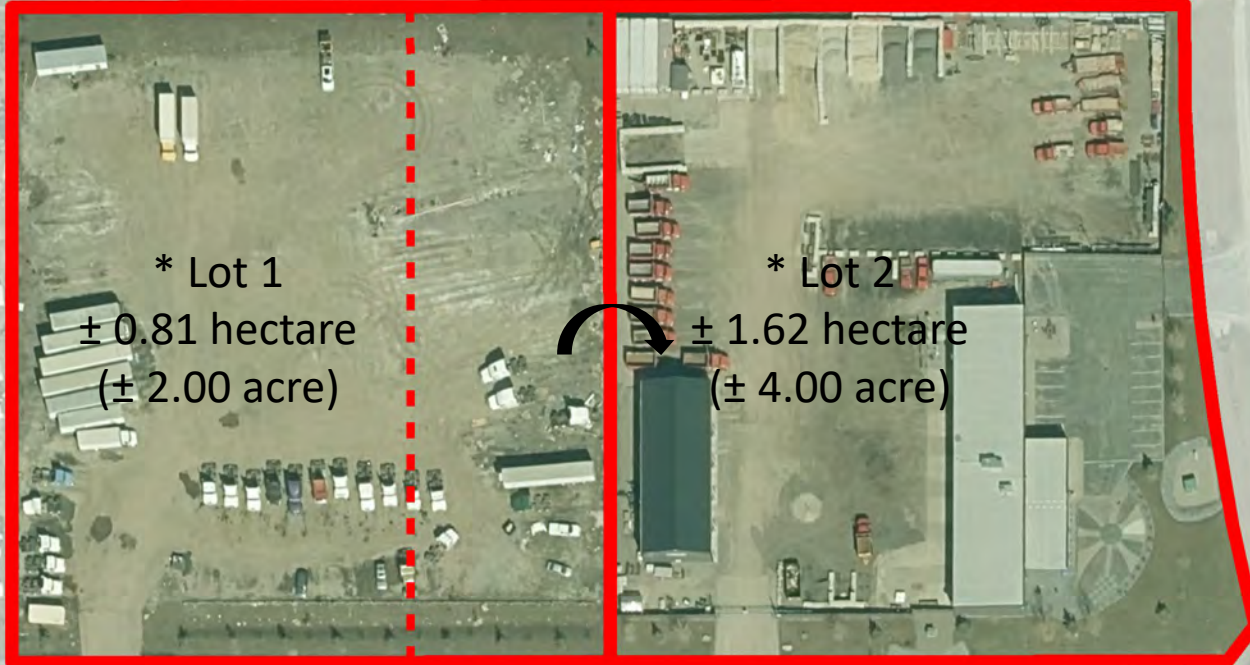




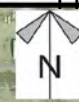
*** Means the approximate parcel size after the boundary adjustment**



Development Proposal

To adjust the boundaries between a ± 1.21 hectare (3.00 acre) parcel and a ± 1.21 hectare (3.00 acre) parcel in order to create a ± 1.62 hectare (4.00 acre) parcel and a ± 0.81 hectare (2.00 acre) parcel.

Division: 6
Roll: 03330054,03330055
File: PL20240138
Printed: 1/29/2025
Legal: A portion of
NW-30-23-28-W04M



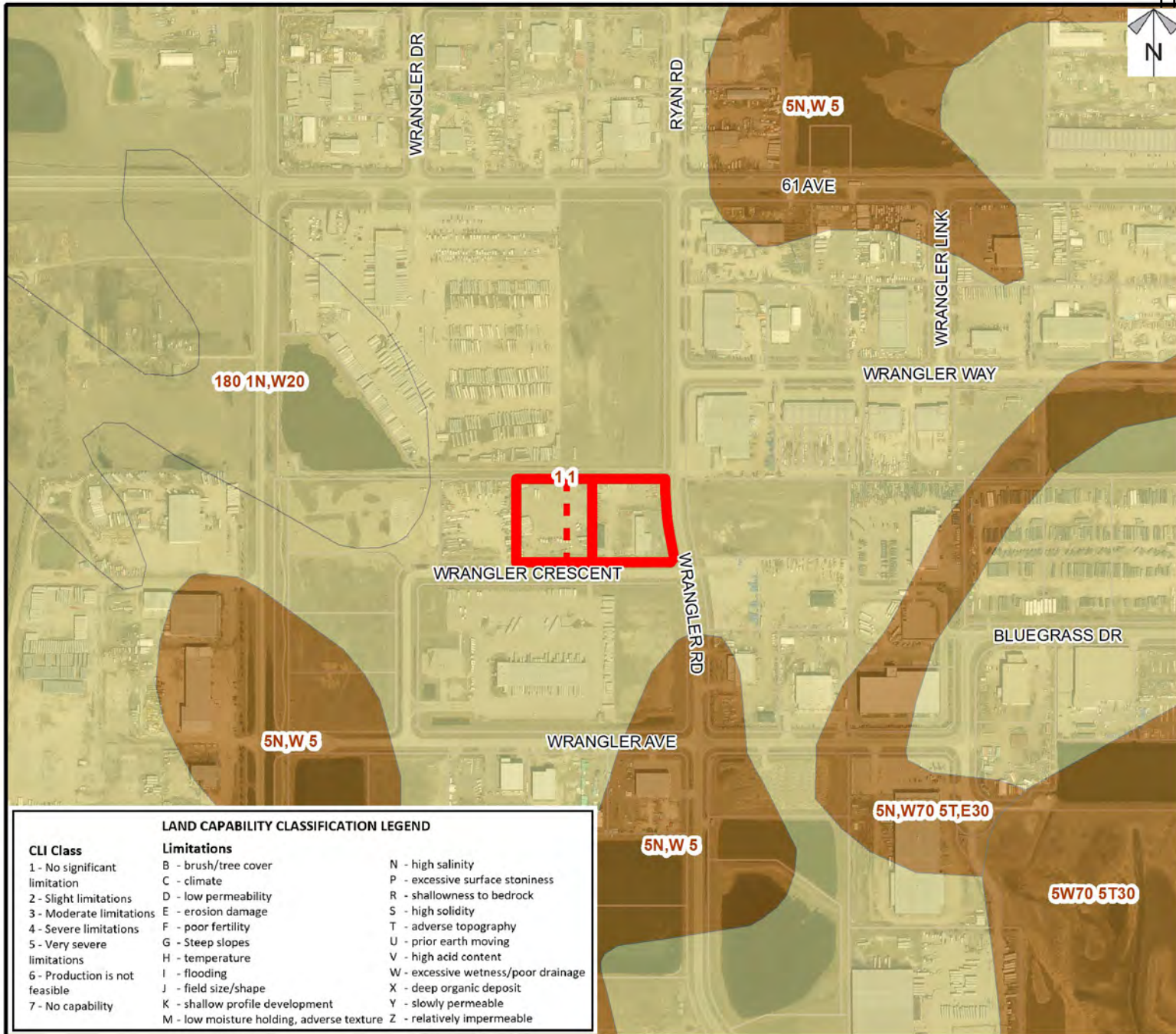
Environmental

To adjust the boundaries between a ± 1.21 hectare (3.00 acre) parcel and a ± 1.21 hectare (3.00 acre) parcel in order to create a ± 1.62 hectare (4.00 acre) parcel and a ± 0.81 hectare (2.00 acre) parcel.

Legend

-  Subject Lands
-  Contour - 2 meters
-  Riparian Setbacks
-  Alberta Wetland Inventory
-  Surface Water

Division: 6
Roll: 03330054,03330055
File: PL20240138
Printed: 1/29/2025
Legal: A portion of
NW-30-23-28-W04M

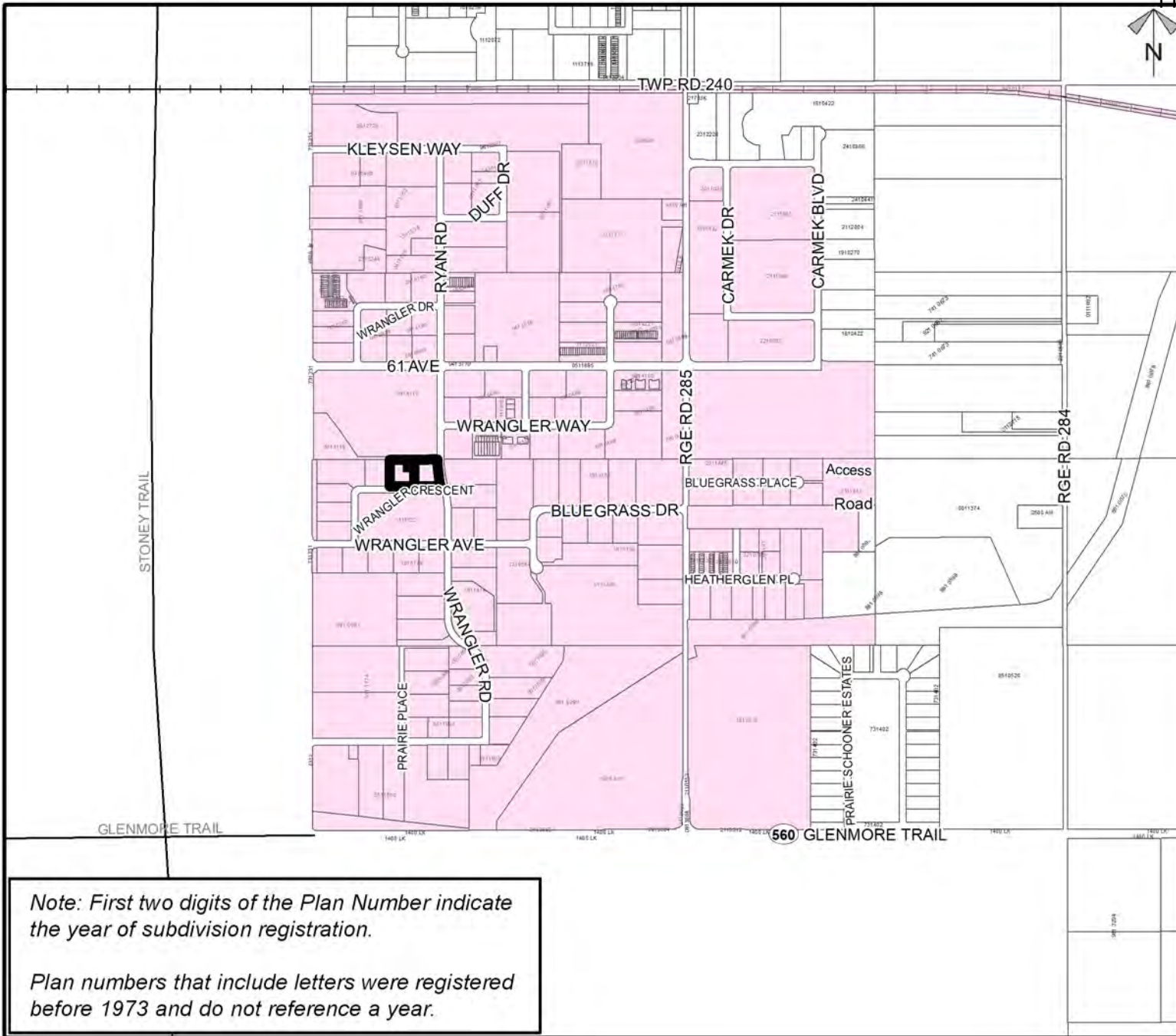


Soil Classifications

To adjust the boundaries between a ± 1.21 hectare (3.00 acre) parcel and a ± 1.21 hectare (3.00 acre) parcel in order to create a ± 1.62 hectare (4.00 acre) parcel and a ± 0.81 hectare (2.00 acre) parcel.

LAND CAPABILITY CLASSIFICATION LEGEND		
CLI Class	Limitations	
1 - No significant limitation	B - brush/tree cover	N - high salinity
2 - Slight limitations	C - climate	P - excessive surface stoniness
3 - Moderate limitations	D - low permeability	R - shallowness to bedrock
4 - Severe limitations	E - erosion damage	S - high solidity
5 - Very severe limitations	F - poor fertility	T - adverse topography
6 - Production is not feasible	G - Steep slopes	U - prior earth moving
7 - No capability	H - temperature	V - high acid content
	I - flooding	W - excessive wetness/poor drainage
	J - field size/shape	X - deep organic deposit
	K - shallow profile development	Y - slowly permeable
	M - low moisture holding, adverse texture	Z - relatively impermeable

Division: 6
 Roll: 03330054,03330055
 File: PL20240138
 Printed: 1/29/2025
 Legal: A portion of NW-30-23-28-W04M



Landowner Circulation Area

To adjust the boundaries between a ± 1.21 hectare (3.00 acre) parcel and a ± 1.21 hectare (3.00 acre) parcel in order to create a ± 1.62 hectare (4.00 acre) parcel and a ± 0.81 hectare (2.00 acre) parcel.

Legend

Support



Not Support



Note: First two digits of the Plan Number indicate the year of subdivision registration.

Plan numbers that include letters were registered before 1973 and do not reference a year.

Division: 6
Roll: 03330054,03330055
File: PL20240138
Printed: 1/29/2025
Legal: A portion of NW-30-23-28-W04M