

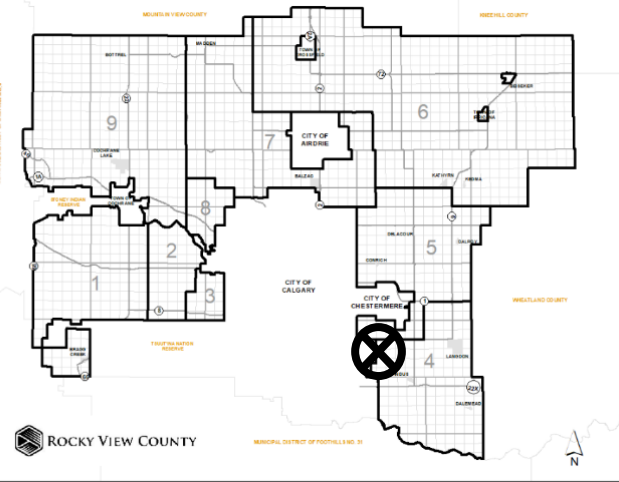
Location & Context

Redesignation Proposal

To redesignate a portion of land from Agricultural, General District (A-GEN) to Agricultural, Small Parcel District (A-SML), in order to facilitate the creation of ± 54 acre parcel with a 102 acre remainder.

Division: 04
 Roll: 03316010
 File: PL20210022
 Legal: A portion of NW-16-
 23-28-W04M

Printed: Feb 8, 2021





Development Proposal

Redesignation Proposal

To redesignate a portion of land from Agricultural, General District (A-GEN) to Agricultural, Small Parcel District (A-SML), in order to facilitate the creation of ± 54 acre parcel with a 102 acre remainder.

A-GEN \rightarrow A-SML
 ± 21.86 ha (± 54.00 ac)

A-GEN Remainder
 ± 41.28 ha (± 102.00 ac)

CALGARY

Division: 04
Roll: 03316010
File: PL20210022
Legal: A portion of NW-16-23-28-W04M

Printed: Feb 8, 2021

Environmental

Redesignation Proposal

To redesignate a portion of land from Agricultural, General District (A-GEN) to Agricultural, Small Parcel District (A-SML), in order to facilitate the creation of ± 54 acre parcel with a 102 acre remainder.



-  Subject Lands
-  Contour - 2 meters
-  Riparian Setbacks
-  Alberta Wetland Inventory
-  Surface Water

Division: 04
 Roll: 03316010
 File: PL20210022
 Legal: A portion of NW-16-
 23-28-W04M

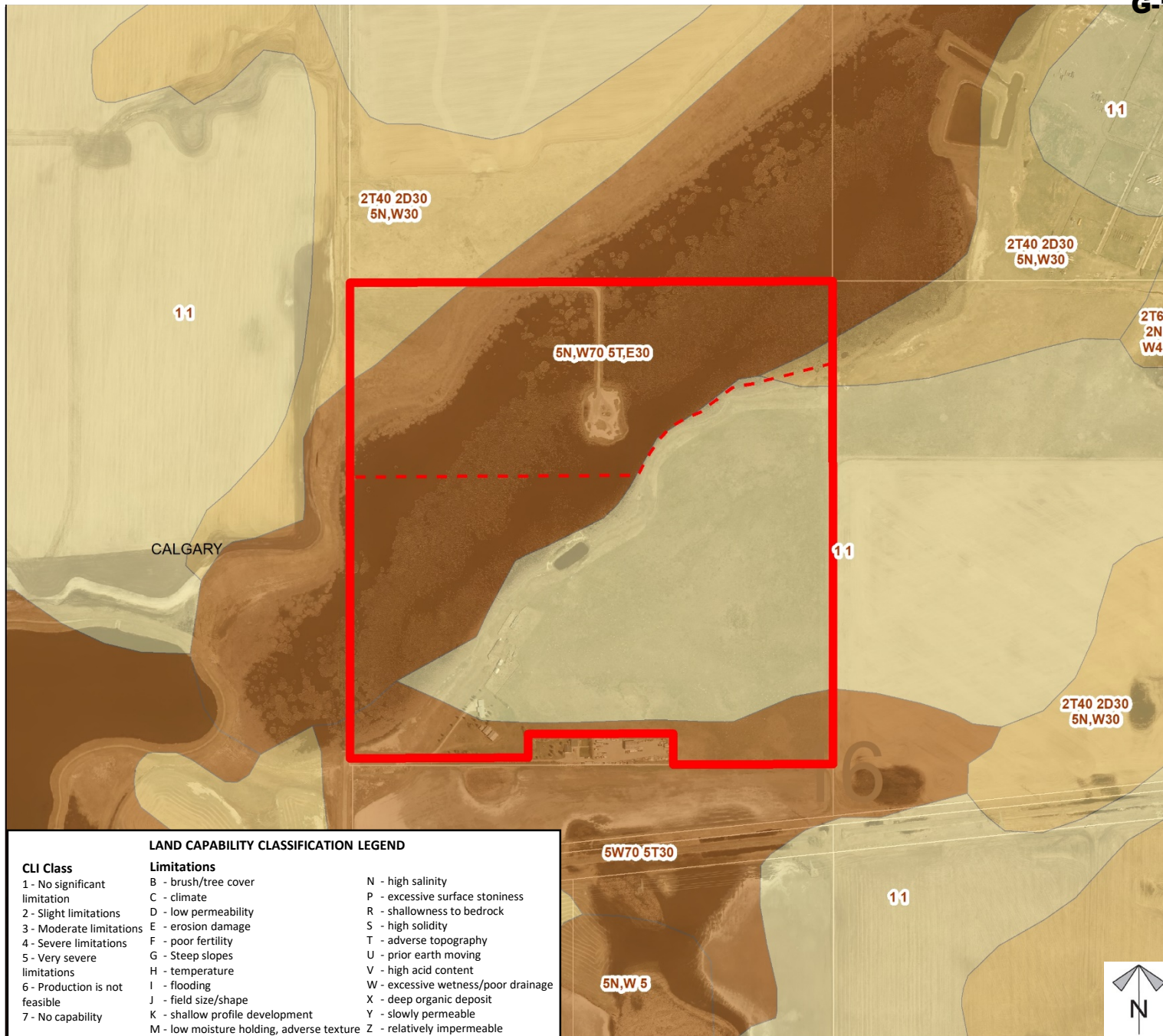
Printed: Feb 8, 2021



Soil Classifications

Redesignation Proposal

To redesignate a portion of land from Agricultural, General District (A-GEN) to Agricultural, Small Parcel District (A-SML), in order to facilitate the creation of ± 54 acre parcel with a 102 acre remainder.



LAND CAPABILITY CLASSIFICATION LEGEND

CLI Class

- 1 - No significant limitation
- 2 - Slight limitations
- 3 - Moderate limitations
- 4 - Severe limitations
- 5 - Very severe limitations
- 6 - Production is not feasible
- 7 - No capability

Limitations

- B - brush/tree cover
- C - climate
- D - low permeability
- E - erosion damage
- F - poor fertility
- G - Steep slopes
- H - temperature
- I - flooding
- J - field size/shape
- K - shallow profile development
- M - low moisture holding, adverse texture
- N - high salinity
- P - excessive surface stoniness
- R - shallowness to bedrock
- S - high solidity
- T - adverse topography
- U - prior earth moving
- V - high acid content
- W - excessive wetness/poor drainage
- X - deep organic deposit
- Y - slowly permeable
- Z - relatively impermeable

Division: 04
Roll: 03316010
File: PL20210022
Legal: A portion of NW-16-23-28-W04M

Printed: Feb 8, 2021

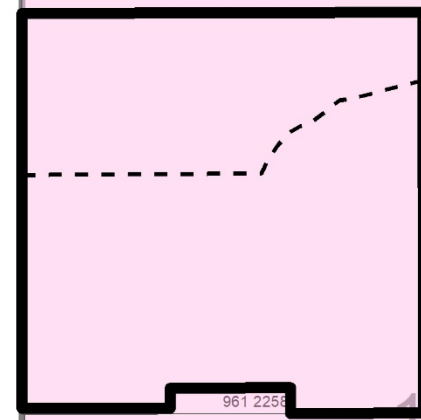


Landowner Circulation Area

Redesignation Proposal

To redesignate a portion of land from Agricultural, General District (A-GEN) to Agricultural, Small Parcel District (A-SML), in order to facilitate the creation of \pm 54 acre parcel with a 102 acre remainder.

CALGARY



Note: First two digits of the Plan Number indicate the year of subdivision registration.

Plan numbers that include letters were registered before 1973 and do not reference a year.

Legend

Support



Opposition



Division: 04

Roll: 03316010

File: PL20210022

Legal: A portion of NW-16-23-28-W04M

Printed: Feb 8, 2021

