

Location & Context

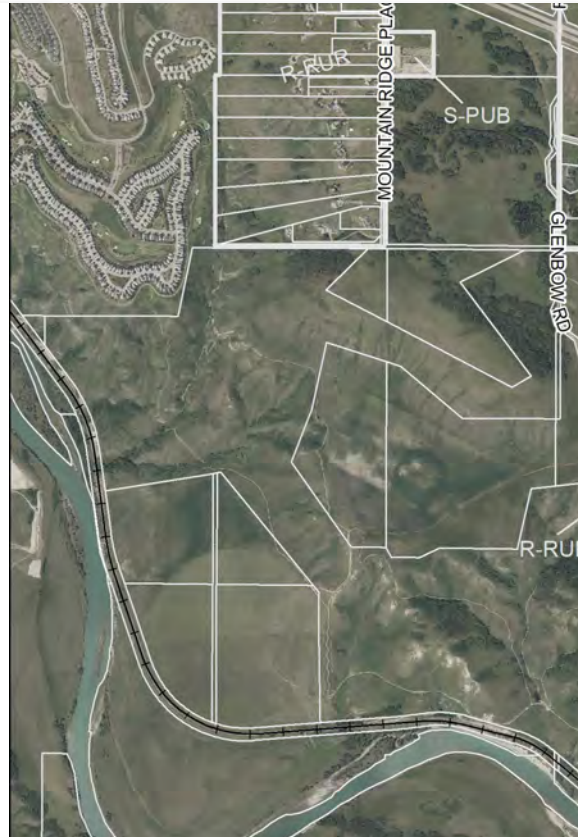
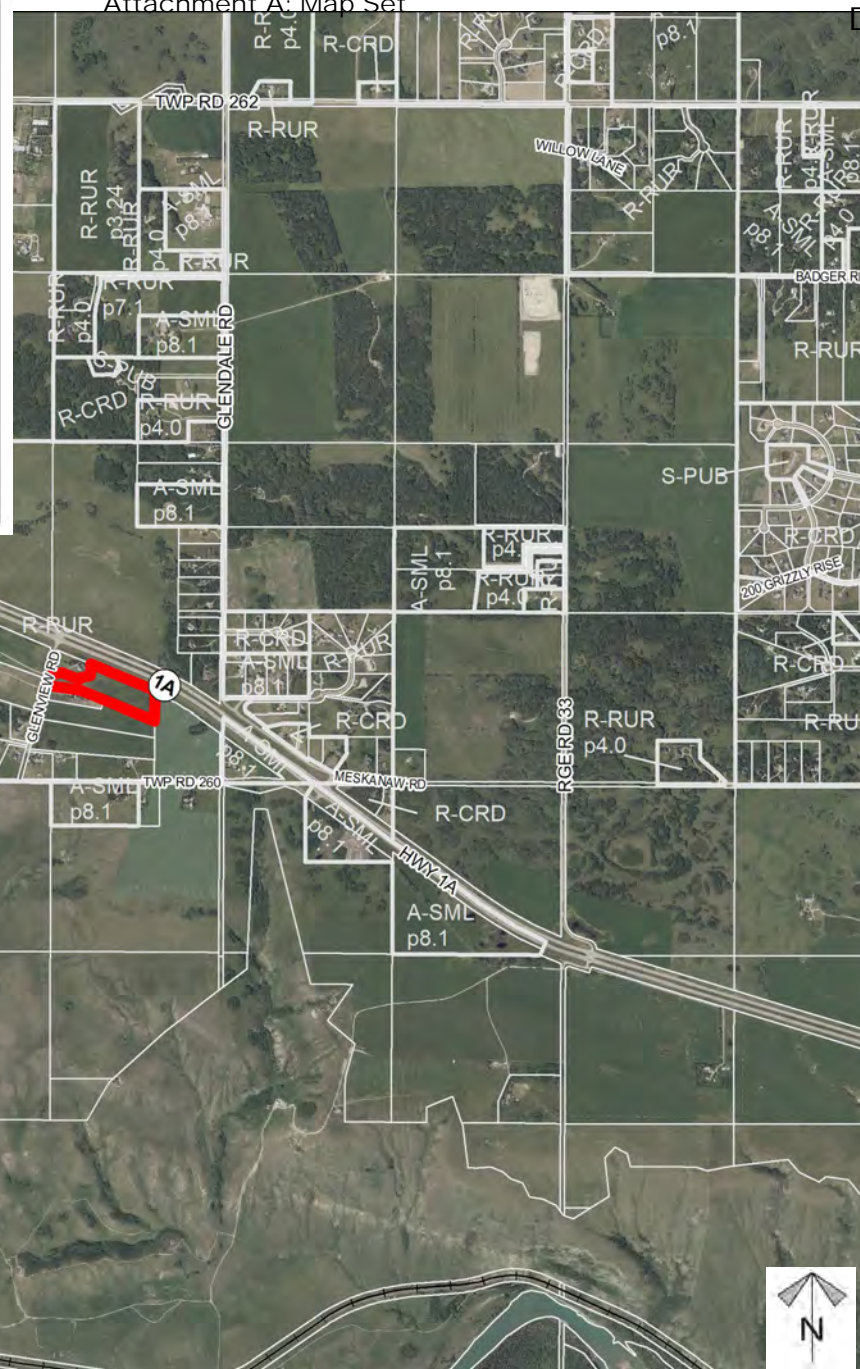
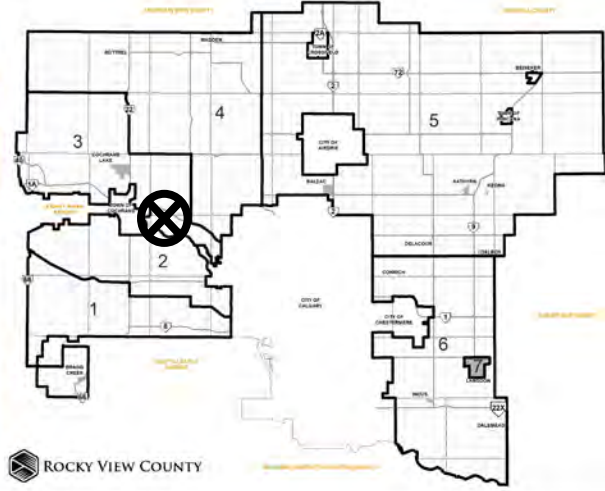
Redesignation Proposal

PL20230135

To redesignate Lot 2, Block 1, Plan 0714945 from Residential, Rural District (R-RUR) to a Direct Control District (DC) to facilitate the development of an assisted living community.

PL20230136

To adopt the Glenview Road Conceptual Scheme



Division: 3
 Roll: 06705041
 File:
 PL20230135/PL20230136
 Printed: Nov 14, 2023
 Legal: A portion of SE-5-26-3-W5M

Development Proposal

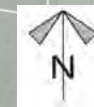
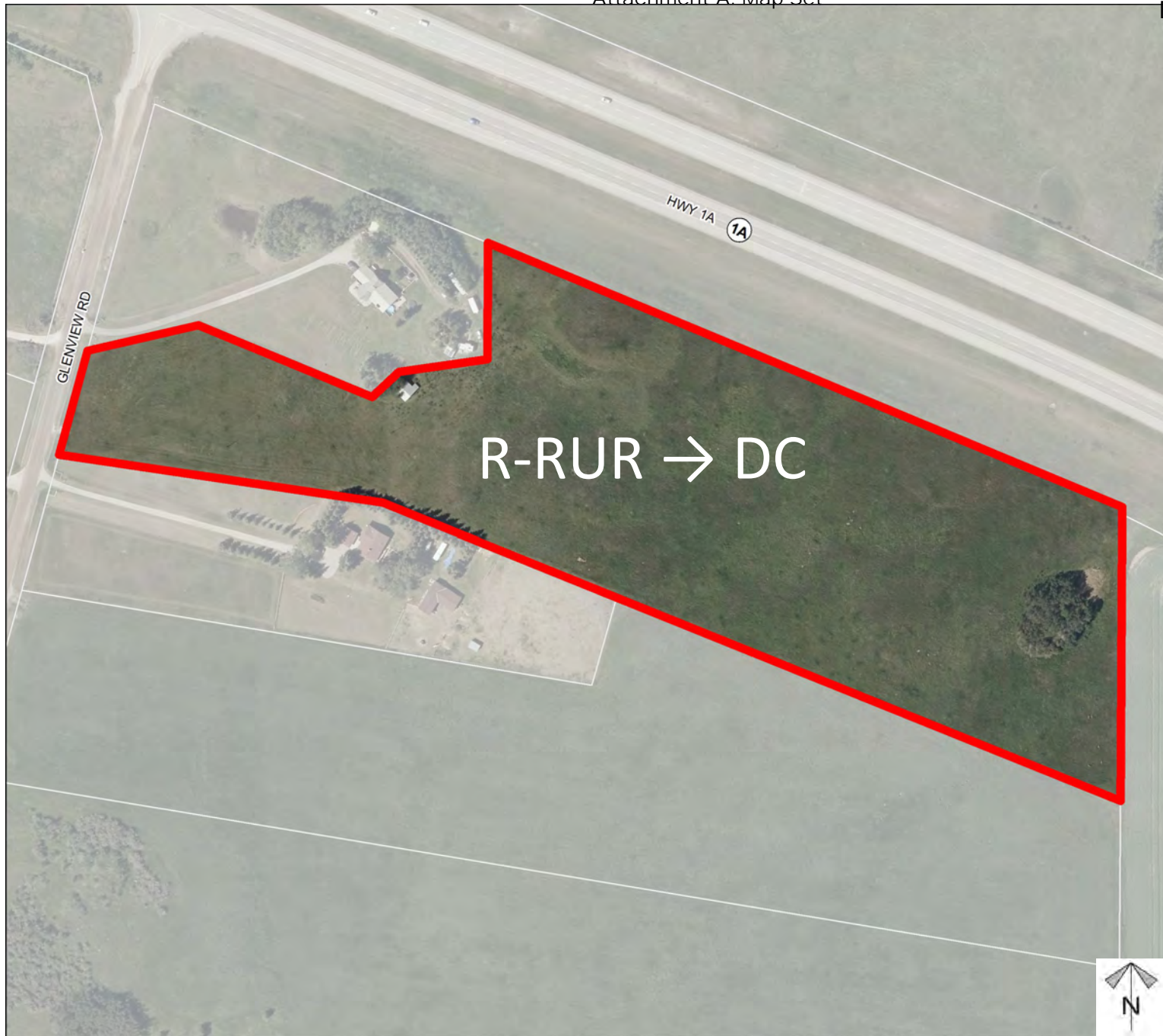
Redesignation Proposal

PL20230135

To redesignate Lot 2, Block 1, Plan 0714945 from Residential, Rural District (R-RUR) to a Direct Control District (DC) to facilitate the development of an assisted living community.

PL20230136

To adopt the Glenview Road Conceptual Scheme



Division: 3
Roll: 06705041
File:
PL20230135/PL20230136
Printed: Nov 14, 2023
Legal: A portion of SE-5-26-3-W5M

Environmental

Redesignation Proposal

PL20230135

To redesignate Lot 2, Block 1, Plan 0714945 from Residential, Rural District (R-RUR) to a Direct Control District (DC) to facilitate the development of an assisted living community.

PL20230136

To adopt the Glenview Road Conceptual Scheme



-  Subject Lands
-  Contour - 2 meters
-  Riparian Setbacks
-  Alberta Wetland Inventory
-  Surface Water



Division: 3
Roll: 06705041
File:
PL20230135/PL20230136
Printed: Nov 14, 2023
Legal: A portion of SE-5-26-3-W5M

Soil Classifications

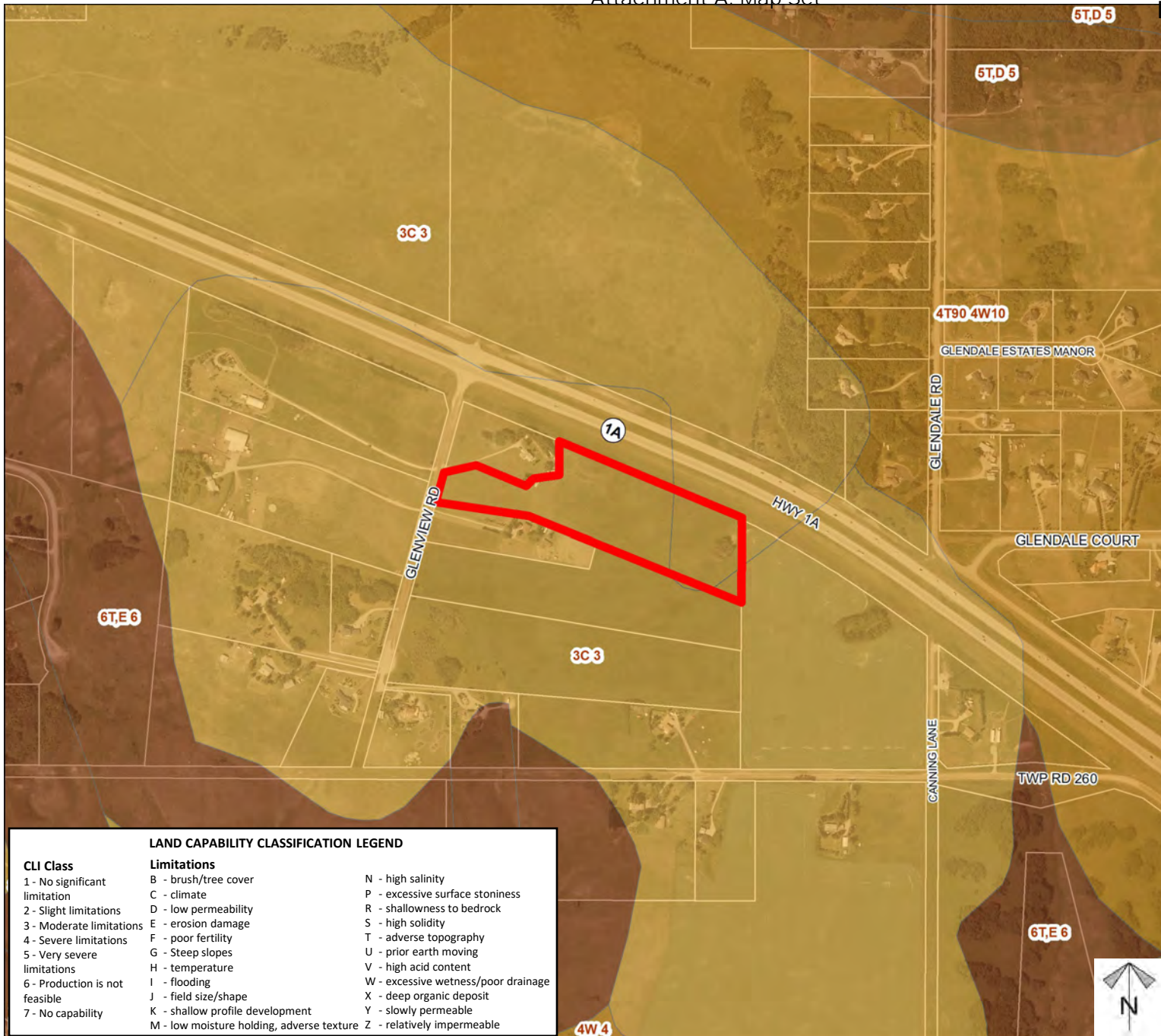
Redesignation Proposal

PL20230135

To redesignate Lot 2, Block 1, Plan 0714945 from Residential, Rural District (R-RUR) to a Direct Control District (DC) to facilitate the development of an assisted living community.

PL20230136

To adopt the Glenview Road Conceptual Scheme



LAND CAPABILITY CLASSIFICATION LEGEND

CLI Class	Limitations	
1 - No significant limitation	B - brush/tree cover	N - high salinity
2 - Slight limitations	C - climate	P - excessive surface stoniness
3 - Moderate limitations	D - low permeability	R - shallowness to bedrock
4 - Severe limitations	E - erosion damage	S - high solidity
5 - Very severe limitations	F - poor fertility	T - adverse topography
6 - Production is not feasible	G - Steep slopes	U - prior earth moving
7 - No capability	H - temperature	V - high acid content
	I - flooding	W - excessive wetness/poor drainage
	J - field size/shape	X - deep organic deposit
	K - shallow profile development	Y - slowly permeable
	M - low moisture holding, adverse texture	Z - relatively impermeable

Division: 3
 Roll: 06705041
 File:
 PL20230135/PL20230136
 Printed: Nov 14, 2023
 Legal: A portion of SE-5-26-3-W5M

Landowner Circulation Area

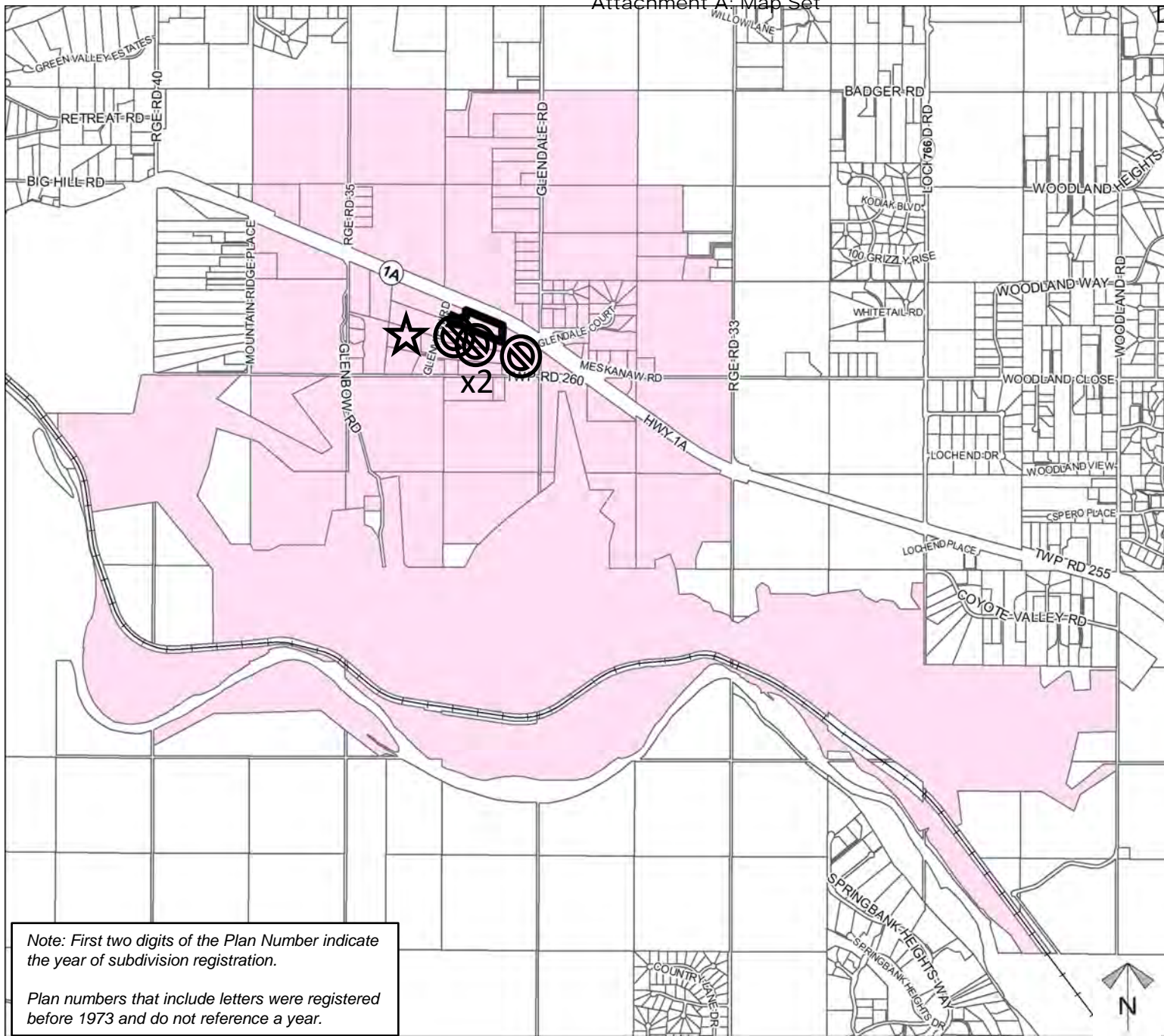
Redesignation Proposal

PL20230135

To redesignate Lot 2, Block 1, Plan 0714945 from Residential, Rural District (R-RUR) to a Direct Control District (DC) to facilitate the development of an assisted living community.

PL20230136

To adopt the Glenview Road Conceptual Scheme



Legend

Support



Not Support



1x opposition letter could not be mapped

Note: First two digits of the Plan Number indicate the year of subdivision registration.

Plan numbers that include letters were registered before 1973 and do not reference a year.

Division: 3
Roll: 06705041
File:
PL20230135/PL20230136
Printed: Nov 14, 2023
Legal: A portion of SE-5-26-3-W5M