

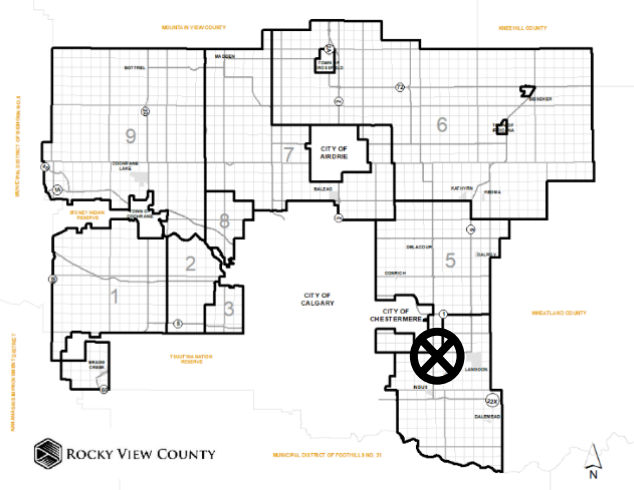


Location & Context

Redesignation Proposal

Redesignation of a ± 20 acre portion of the parcel from A-GEN to S-FUD to accommodate the future development of a parking area for large earth moving equipment.


Division: 4
Roll: 03219003
File: PL20200191
Legal: A portion of N-19-23-27-W04M
Printed: January 6, 2021



Development Proposal

Redesignation Proposal

Redesignation of a ± 20 acre portion of the parcel from A-GEN to S-FUD to accommodate the future development of a parking area for large earth moving equipment.



$\pm 8.9\text{ha}$ (± 20 acres)
A-GEN \rightarrow S-FUD

Division: 4
Roll: 03219003
File: PL20200191
Legal: A portion of N-19-23-
27-W04M
Printed: January 6, 2021

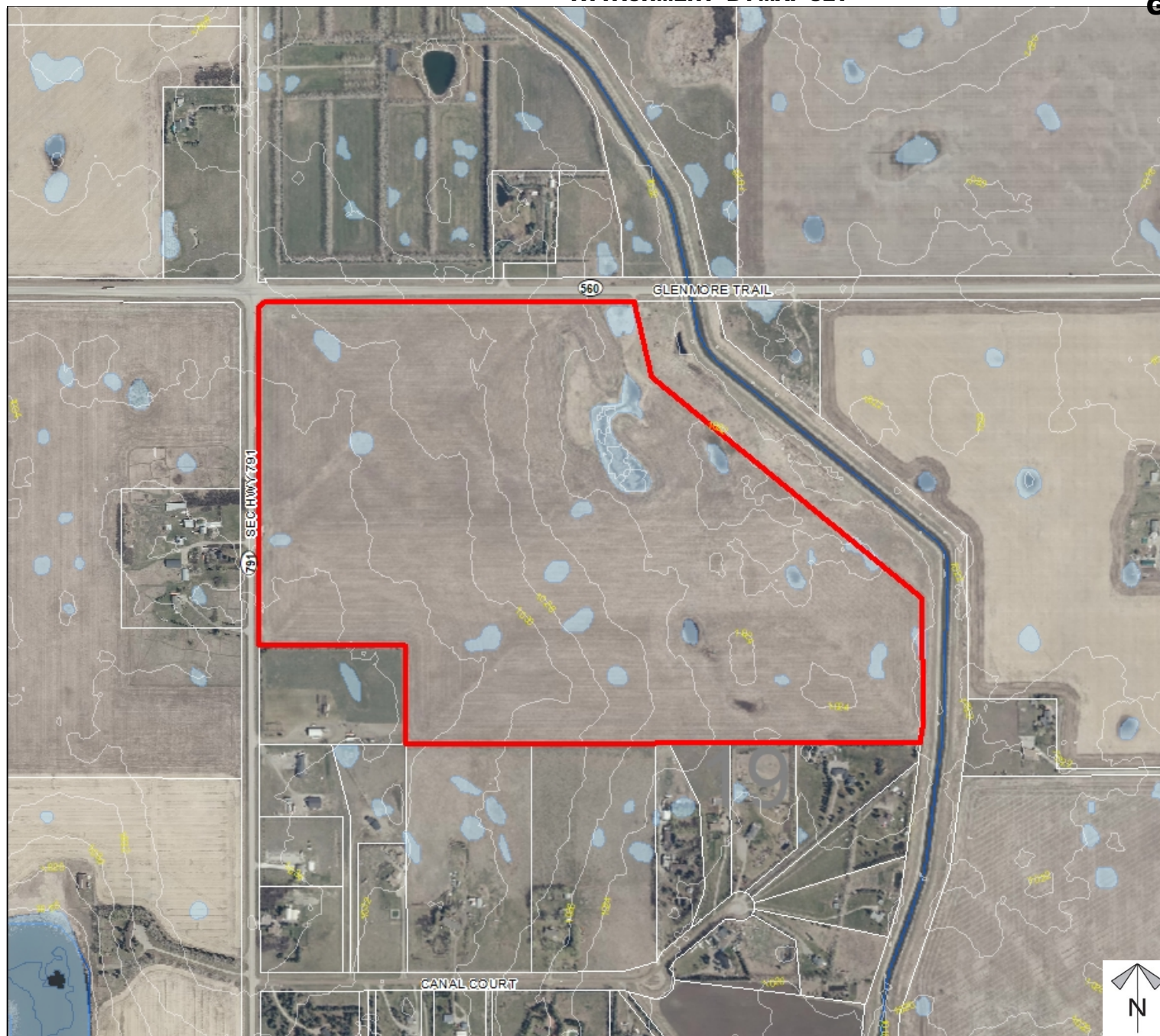




Environmental

Redesignation Proposal

Redesignation of a ± 20 acre portion of the parcel from A-GEN to S-FUD to accommodate the future development of a parking area for large earth moving equipment.



- Subject Lands
- Contour - 2 meters
- Riparian Setbacks
- Alberta Wetland Inventory
- Surface Water

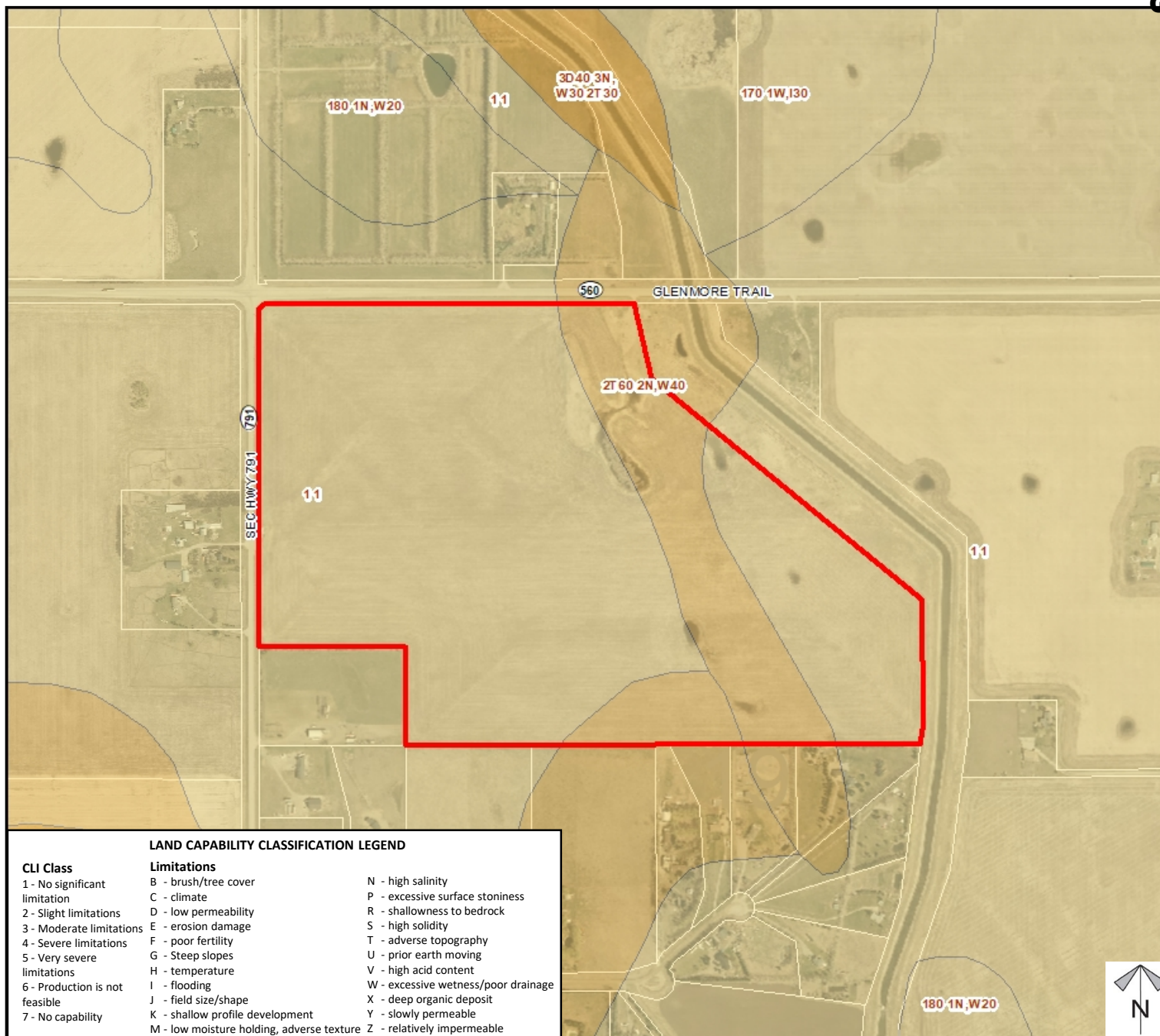
Division: 4
 Roll: 03219003
 File: PL20200191
 Legal: A portion of N-19-23-27-W04M
 Printed: January 6, 2021



Soil Classifications

Redesignation Proposal

Redesignation of a ± 20 acre portion of the parcel from A-GEN to S-FUD to accommodate the future development of a parking area for large earth moving equipment.



LAND CAPABILITY CLASSIFICATION LEGEND

CLI Class

- 1 - No significant limitation
- 2 - Slight limitations
- 3 - Moderate limitations
- 4 - Severe limitations
- 5 - Very severe limitations
- 6 - Production is not feasible
- 7 - No capability

Limitations

- B - brush/tree cover
- C - climate
- D - low permeability
- E - erosion damage
- F - poor fertility
- G - Steep slopes
- H - temperature
- I - flooding
- J - field size/shape
- K - shallow profile development
- M - low moisture holding, adverse texture
- N - high salinity
- P - excessive surface stoniness
- R - shallowness to bedrock
- S - high solidity
- T - adverse topography
- U - prior earth moving
- V - high acid content
- W - excessive wetness/poor drainage
- X - deep organic deposit
- Y - slowly permeable
- Z - relatively impermeable

Division: 4
Roll: 03219003
File: PL20200191
Legal: A portion of N-19-23-27-W04M
Printed: January 6, 2021

Redesignation Proposal

Redesignation of a ±20 acre portion of the parcel from A-GEN to S-FUD to accommodate the future development of a parking area for large earth moving equipment.

Legend

Support



Opposition



Note: First two digits of the Plan Number indicate the year of subdivision registration.

Plan numbers that include letters were registered before 1973 and do not reference a year.

Division: 4
Roll: 03219003
File: PL20200191
Legal: A portion of N-19-23-
27-W04M
Printed: January 6, 2021