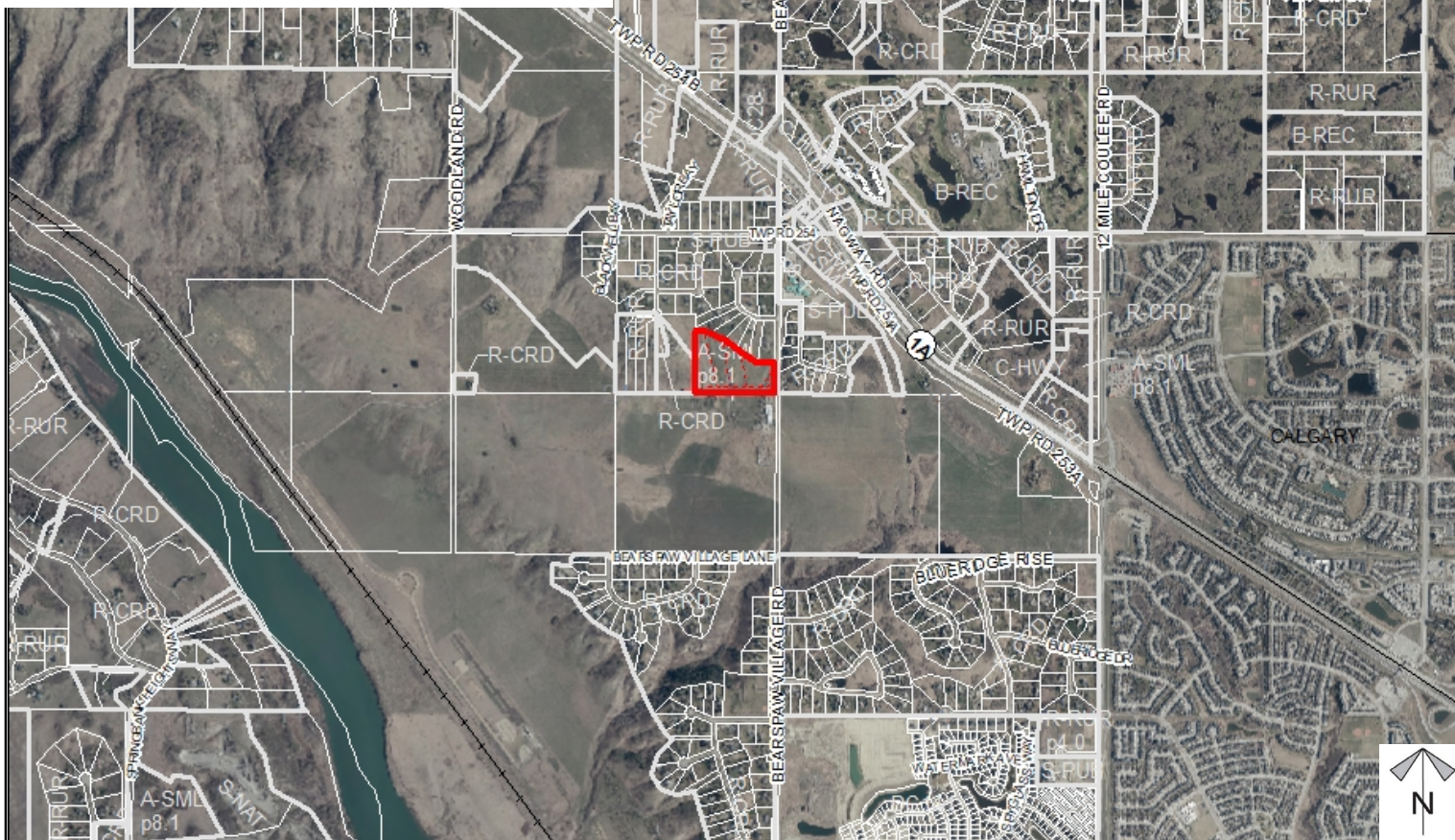
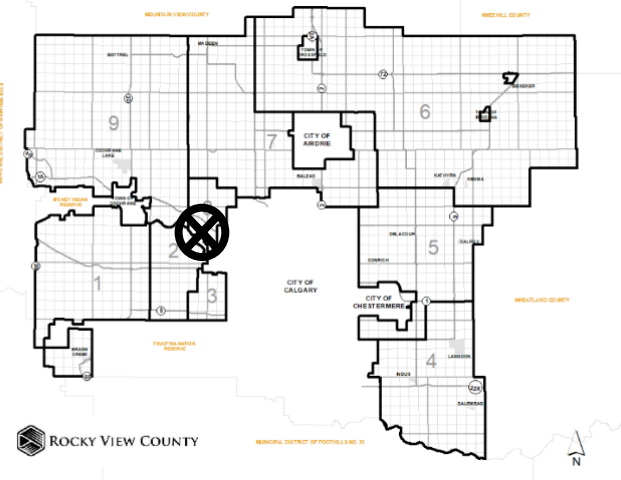




## Location & Context

### Redes/Subd Proposal

Description of  
development here



Division: 8  
Roll: 05724053  
File: PL20200010  
Printed: February 3, 2021  
Legal: Lot:24 Block:7  
Plan:1910932; within NE-24-  
25-03-W05M



## Development Proposal

### Redes/Subd Proposal

Description of  
development here

**A-SMLp8.1→  
R-RUR**  
Lot 2  
± 1.91 ha  
(± 4.72 ac)

**A-SMLp8.1→R-RUR**  
Lot 1  
± 2.81 ha  
(± 5.95 ac)

**A-  
SMLp8.1→  
R-RUR**  
Lot 3  
± 1.75 ha  
(± 4.34 ac)

**A-SMLp8.1→  
R-RUR**  
Lot 4  
± 1.63 ha  
(± 4.02 ac)

**A-SMLp8.1→  
S-PUB**  
Lot 5  
PUL  
± 0.25 ha  
(± 0.618 ac)

B/E 24 R/W RD



Division: 8  
 Roll: 05724053  
 File: PL20200010  
 Printed: February 3, 2021  
 Legal: Lot:24 Block:7  
 Plan:1910932; within NE-24-  
 25-03-W05M

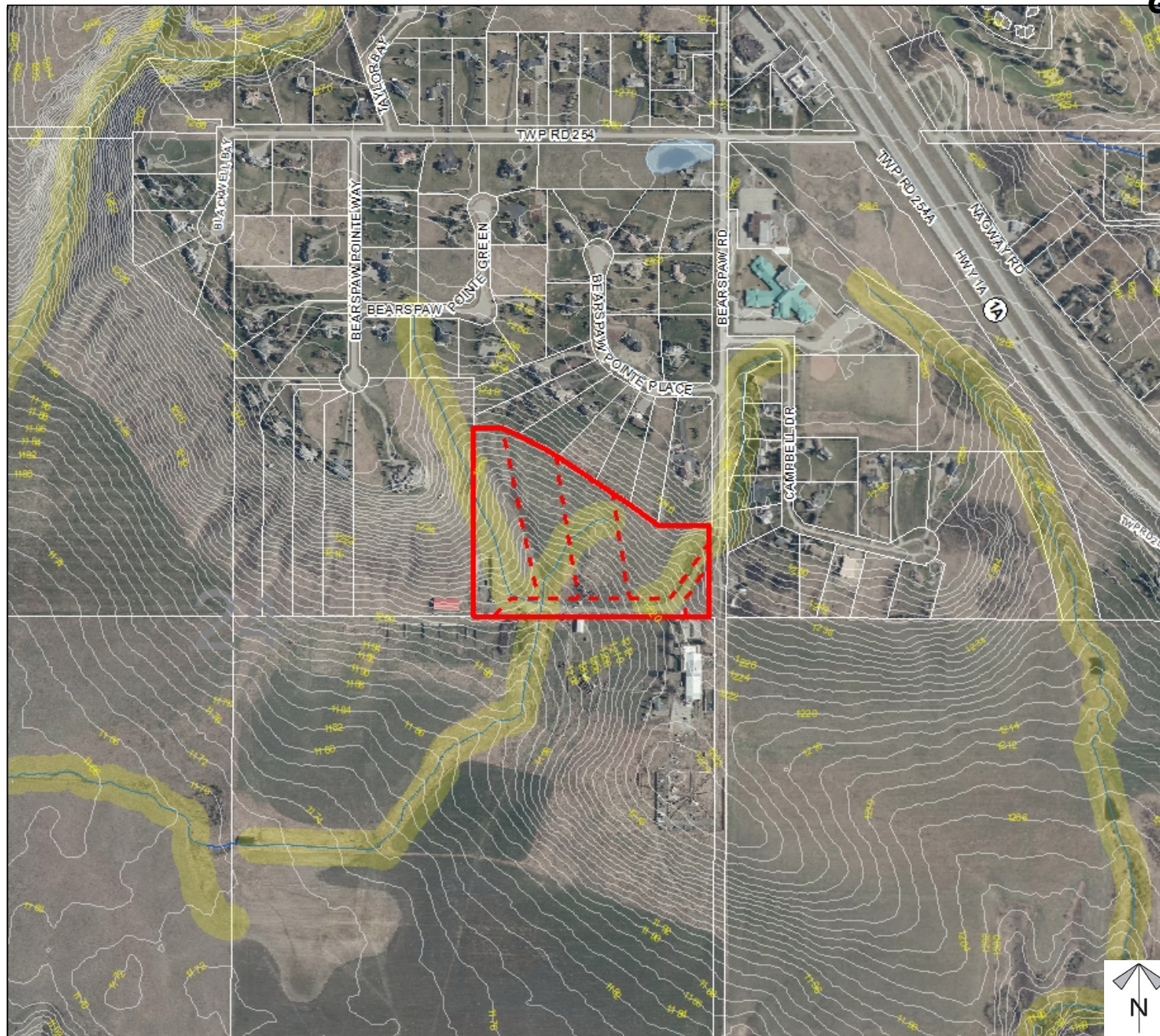




## Environmental

Redes/Subd Proposal

Description of  
development here



- Subject Lands
- Contour - 2 meters
- Riparian Setbacks
- Alberta Wetland Inventory
- Surface Water

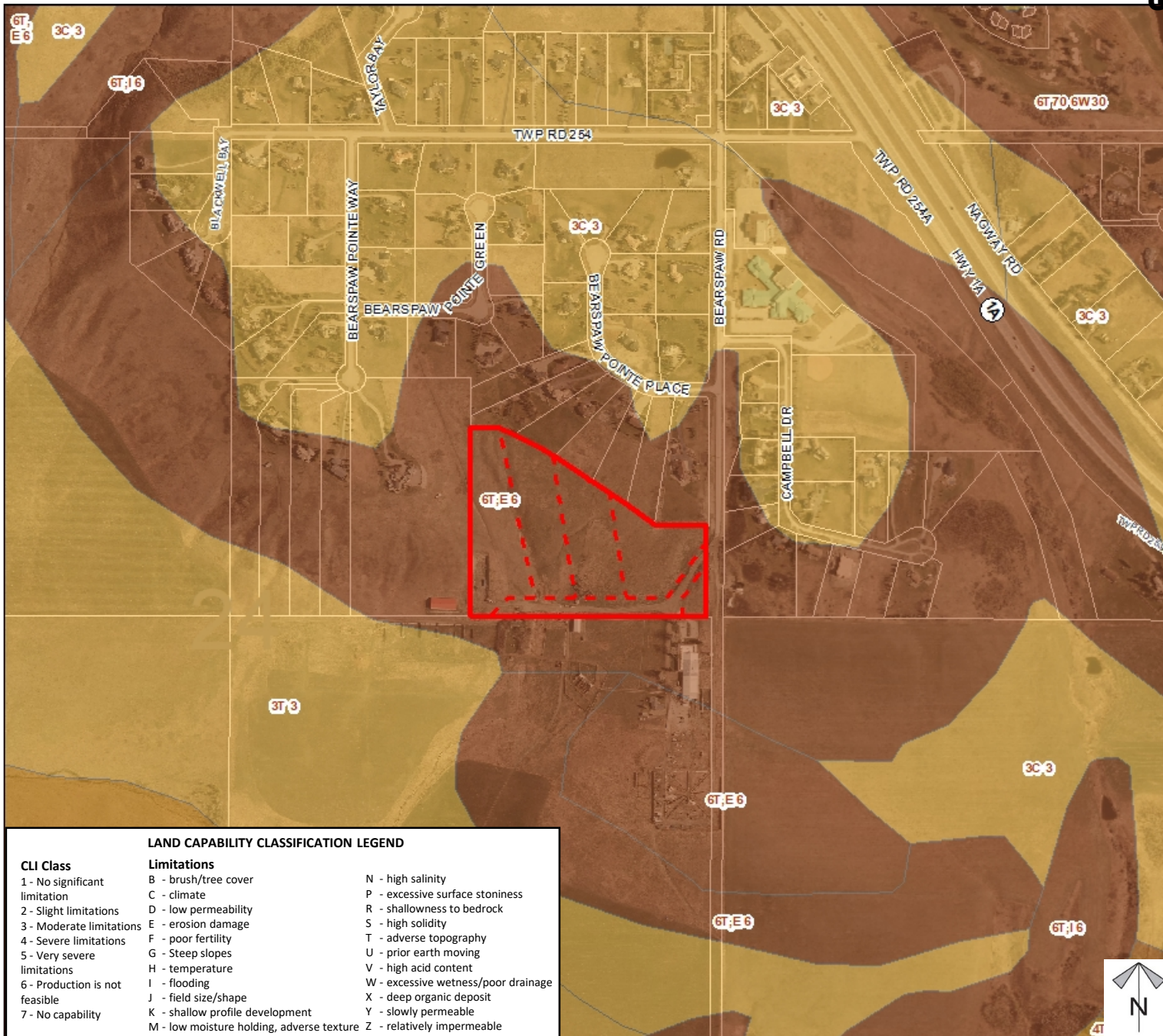
Division: 8  
 Roll: 05724053  
 File: PL20200010  
 Printed: February 3, 2021  
 Legal: Lot:24 Block:7  
 Plan:1910932; within NE-24-  
 25-03-W05M



## Soil Classifications

### Redes/Subd Proposal

Description of  
development here



Division: 8  
 Roll: 05724053  
 File: PL20200010  
 Printed: February 3, 2021  
 Legal: Lot:24 Block:7  
 Plan:1910932; within NE-24-  
 25-03-W05M

### Redes/Subd Proposal

Development	Description of development here
1	
2	
3	
4	
5	
6	
7	
8	
9	
10	
11	
12	
13	
14	
15	
16	
17	
18	
19	
20	
21	
22	
23	
24	
25	
26	
27	
28	
29	
30	
31	
32	
33	
34	
35	
36	
37	
38	
39	
40	
41	
42	
43	
44	
45	
46	
47	
48	
49	
50	
51	
52	
53	
54	
55	
56	
57	
58	
59	
60	
61	
62	
63	
64	
65	
66	
67	
68	
69	
70	
71	
72	
73	
74	
75	
76	
77	
78	
79	
80	
81	
82	
83	
84	
85	
86	
87	
88	
89	
90	
91	
92	
93	
94	
95	
96	
97	
98	
99	
100	

**Legend**

## Support



### Opposition



*Note: First two digits of the Plan Number indicate the year of subdivision registration.*

*Plan numbers that include letters were registered before 1973 and do not reference a year.*

Division: 8  
Roll: 05724053  
File: PL20200010  
Printed: February 3, 2021  
Legal: Lot:24 Block:7  
Plan:1910932; within NE-24-  
25-03-W05M