



YAMNUSKA

Wolfdog Sanctuary

Introduction

Yamnuska Wolfdog Sanctuary is located on 160 acres of land in the rolling foothills of Alberta, just before the Rocky Mountains. We are a home to 58 wolfdogs that have been neglected, abandoned, or displaced from their homes. Caring for these unique animals and the land on which they live is of utmost importance to us.



What is a Wolfdog?

A wolfdog is a canine that contains some amount of wolf content and some amount of dog content. They are classified as low, mid, or high content, which refers to the amount of wolf content present in their genetics. Wolfdogs are intentionally bred by humans and are often sold as exotic pets. It is rare for wolves and dogs to naturally breed in the wild due to territorial and monogamist behaviour, as well as having different breeding cycles. Wolfdogs often present many challenges, which makes them very difficult to own as pets. Because of this, wolfdogs are often given up by their owners and left with nowhere to go.

CONTENT LEVELS

Low: 20 -
49%



Mid: 50 -
79%



High: 80 -
95%+



About Yamnuska Wolfdog Sanctuary



Our mission is to provide rescued wolfdogs with a meaningful and fulfilled life, while offering experiential education to promote the well-being and understanding of wolfdogs within our domestic world. By cultivating authentic connections between our wolfdogs and people, our goal is to inspire an appreciation for wolves in the wild and a reconnection to our natural world

Why

The bottom line is that wolfdogs are a result of humans. Humans have brought these amazing animals into the world, but in many cases have had no plan for their continued care. What is heartbreaking is that with a lack of education to wolfdog owners on responsible ownership, 90% of these animals are euthanized before the age of 2. There are few suitable homes for these animals, as they are just a little too “wild” to make a house pet. They require much more than many owners can give and due to their wolf content, regular animal shelters are unable to take them in. **If it weren't for Yamnuska Wolfdog Sanctuary, there would be no one.**

Yamnuska Wolfdog Sanctuary is made up a small team of 10 dedicated and passionate staff. We care for these animals daily, and educate the general public by the thousands about wolfdogs and wolfdog ownership. These truly are remarkable and unique animals that are deserving of proper care and a deep respect.

Caring for a wolfdog is much different than a regular pet, and many people expect these animals to be like a dog, but the truth is, they are a completely different animal, although they may contain some dog traits.

Wolfdogs require a lot of food, specialized vet care and quality enrichment. **We owe this responsibility to them.** At our Sanctuary, we offer 1-2 acre enclosures for each of our wolfdog packs, with a pack consisting of usually only 2-3 wolfdogs. Within each enclosures are dens, platforms, and enrichment items, to ensure they have room to run and play, and maintain their well-being and happiness.

We also owe it to the wolfdogs to set them up for success. This means when we build an enclosure, they must be “wolf-proof”. Each enclosure has specialty fencing that is 8ft high, followed by a 2ft overhang. They also have a 4ft dig guard buried into the ground along the fence line. With varying levels of wolf content, and an athletic ability to dig, climb, and jump, these are basics requirements for enclosures to ensure their safety.



Why we see wolfdogs coming the Sanctuary as surrenders

EXTREME BEHAVIOURS

1

- *Resource guarding*
- *Destructive*
- *Escape artists*
- *Low affinity to humans*
- *Prey drive*

FINANCIAL NEEDS OF ANIMALS

2

- *Specialized containment*
- *Vet care*
- *Enrichment*
- *Food costs (raw food)*

MISREPRESENTATION BY BREEDERS

3

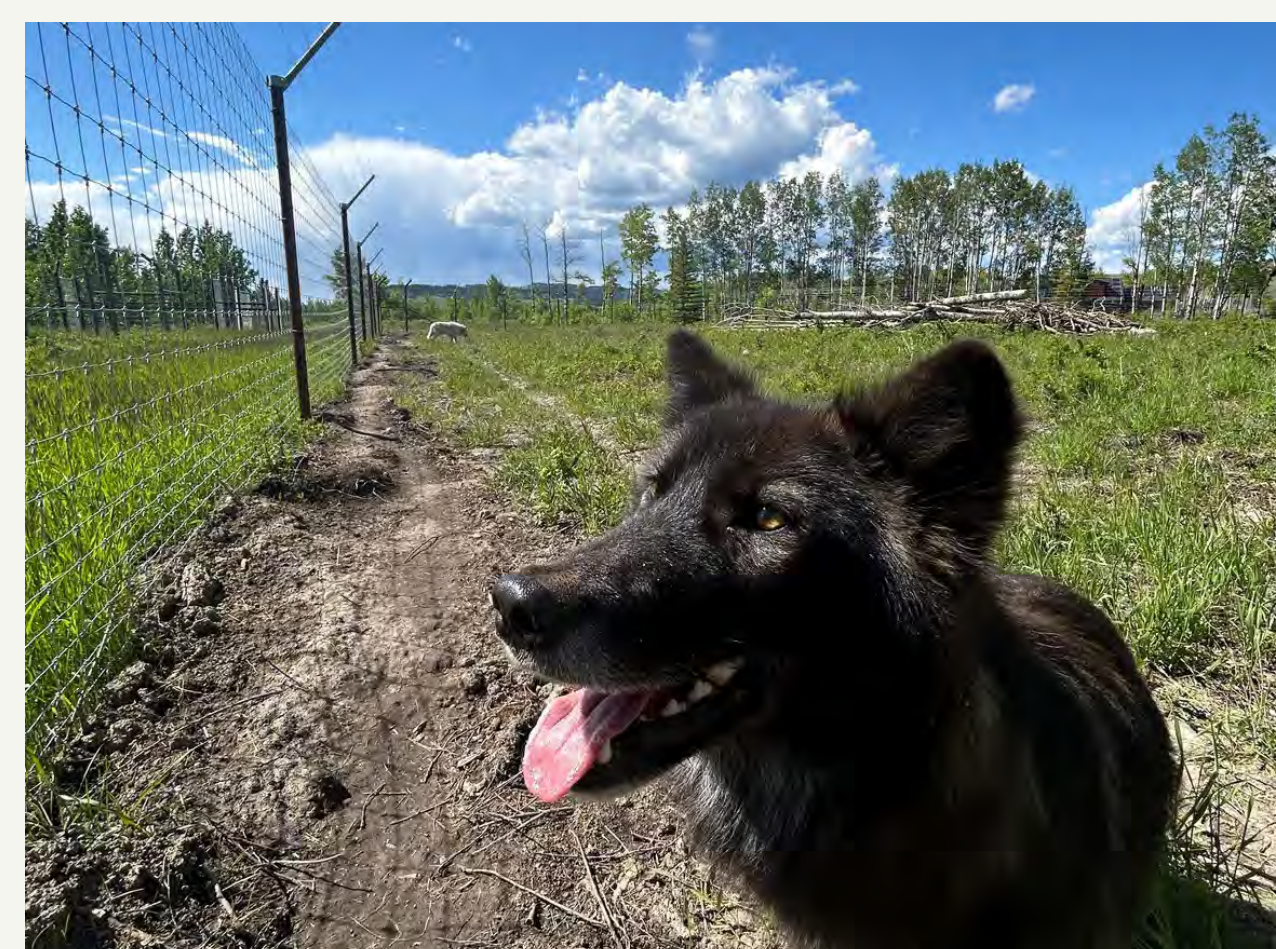
- *Misinforming buyers of animals nature*
- *Playing up the "cool" factor of these animals*

OWNERS UNABLE TO ACCOMMODATE ANIMALS NEEDS

4

- *Changing and upheaving lifestyle*

Building an Enclosure



Enrichment Platforms, Dens & Stock Tanks



Timeline

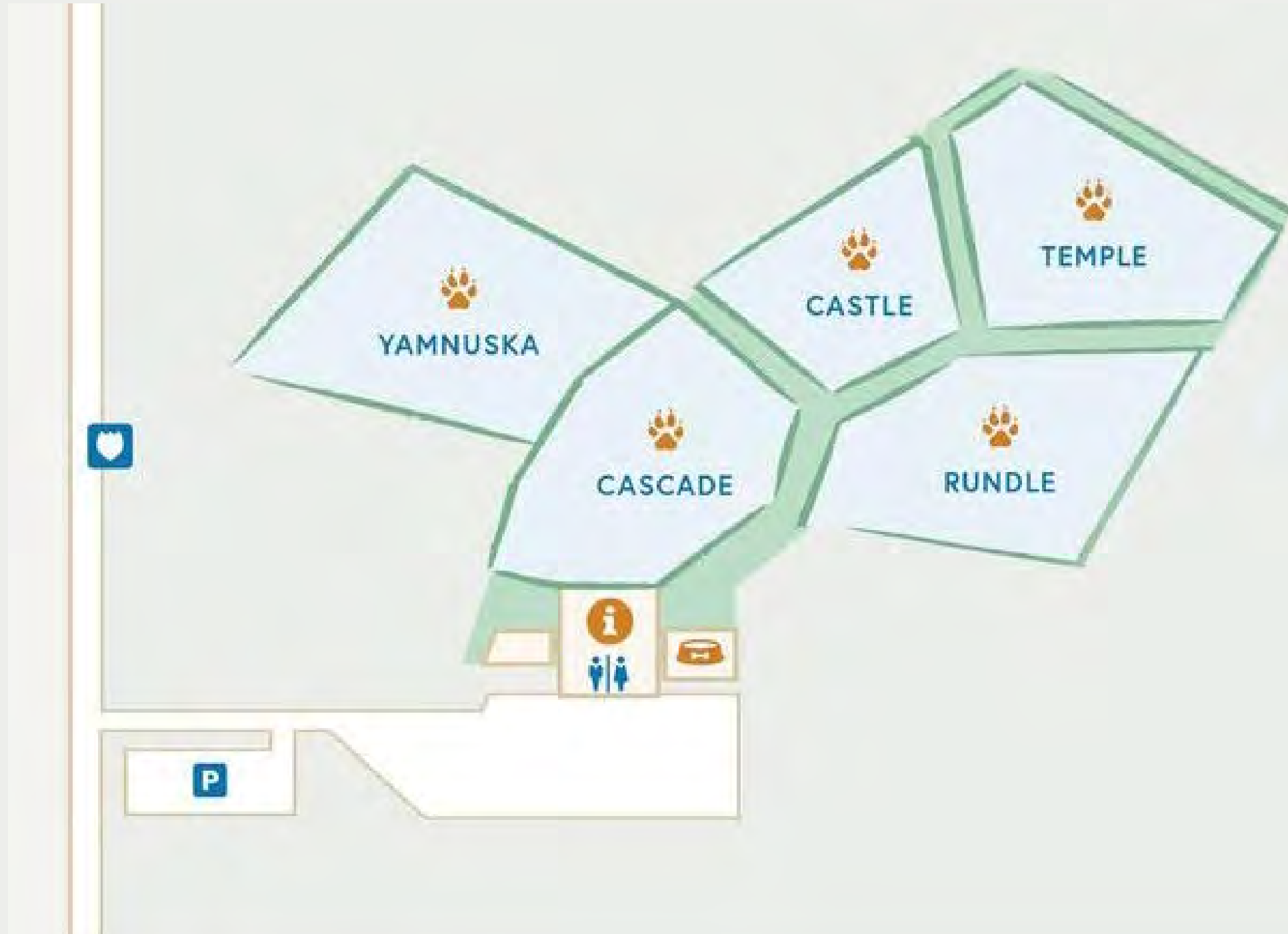
e



2024 Rescues



Map of location in 2014



Map as of December 2024



Funding

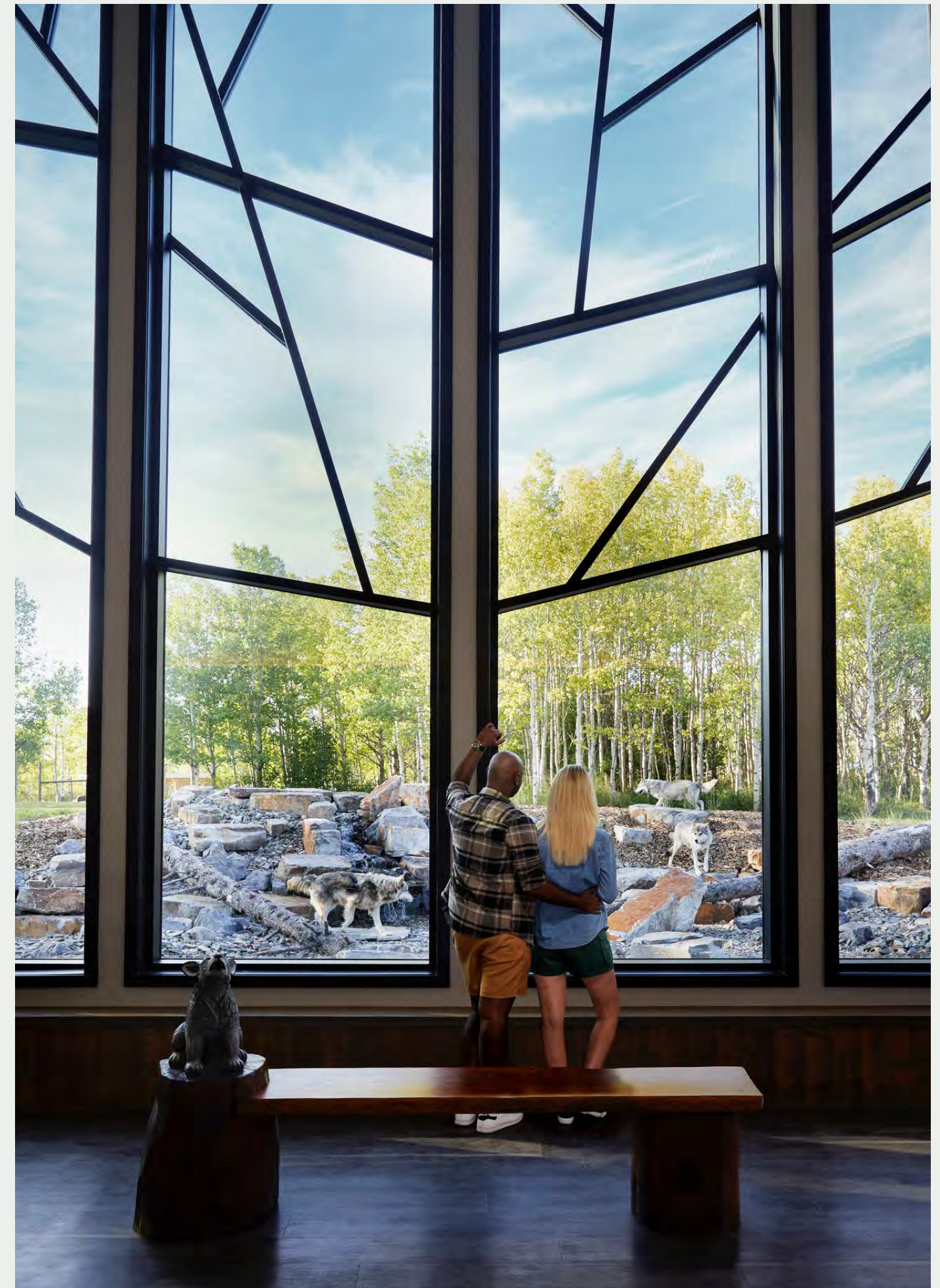
- Tours & Gift shop sales
- Fundraising Activities
- Grants and Foundations



The Sanctuary



Open year - round,
Thursday - Monday 10 - 5pm



Our Tours



Sanctuary Walk



Intro Tour



Interactive Tour

Visitation

n

Less than 5000 visitors in 2011

36000 visitors in 2023

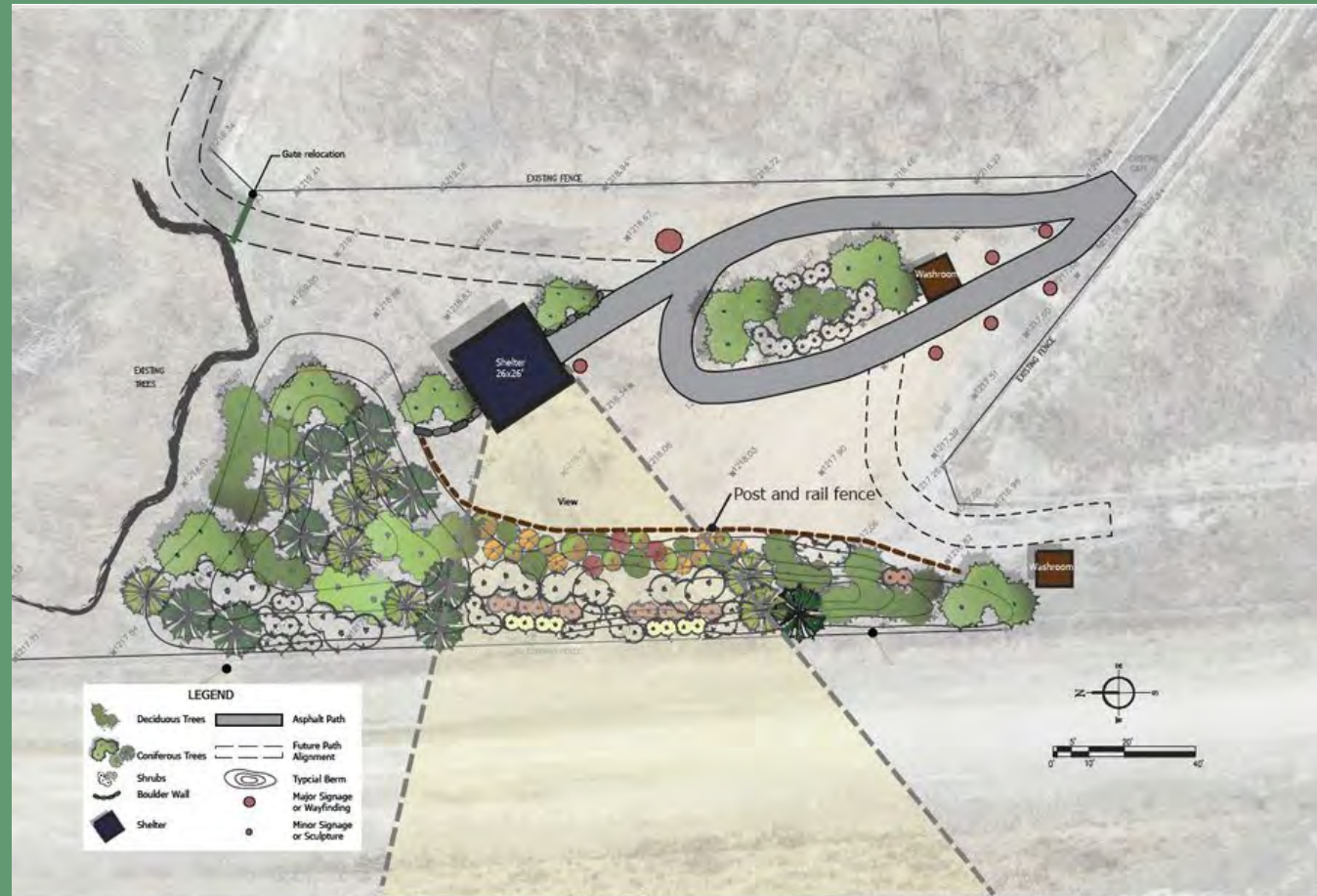
Over 37000 in 2024



Looking ahead



Yamnuska Community Day Use Area



Site Plan



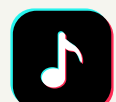



Shelter: Glass doors, concrete pad, retractable screen wall, boulders blending from the interior to exterior



Connect with us

We are approaching half a million engaged followers across our online platforms and 40,000 local and international visitors to our Sanctuary every year.

-  @Yamnuskawdsanct
-  @yamnuskawdsanct
-  @yamnuskawdsanct
-  @YamnuskaWolfdogSanctuary

QUESTIONS?

