

Location & Context

DC Amendment Proposal

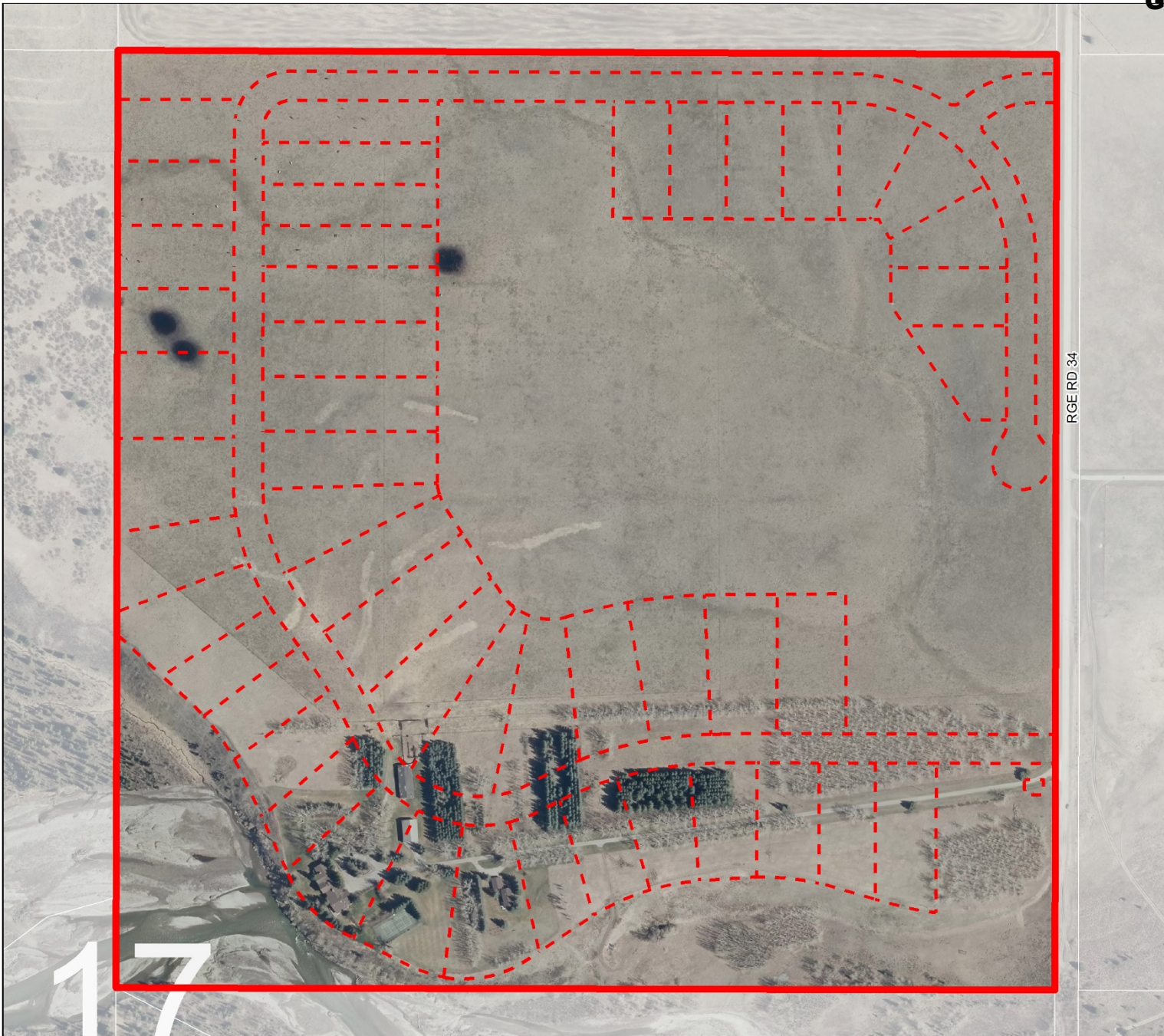
An amendment to Direct Control District 168 to change the minimum parcel size from 0.98 acres to 1.20 acres, increase the sizing for Accessory Buildings under the Greenspace Cell, and replace Schedule B with an updated parcel plan.

Division: 02
 Roll: 04717004
 File: PL20210014
 Printed: Feb 5, 2021
 Legal: NE-17-24-03-W05M

Development Proposal

DC Amendment Proposal

An amendment to Direct Control District 168 to change the minimum parcel size from 0.98 acres to 1.20 acres, increase the sizing for Accessory Buildings under the Greenspace Cell, and replace Schedule B with an updated parcel plan.



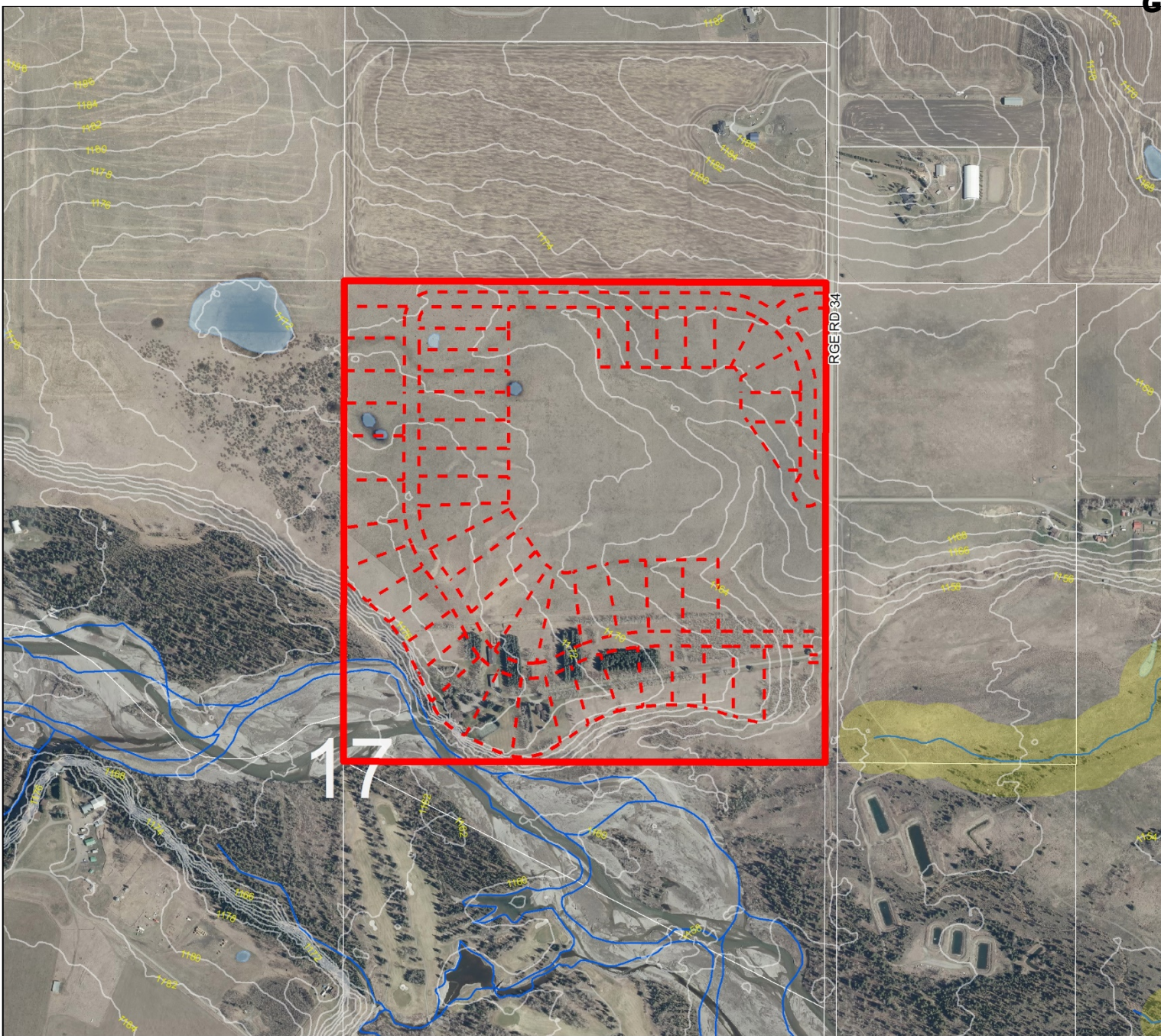
RGE RD 34

Division: 02
Roll: 04717004
File: PL20210014
Printed: Feb 5, 2021
Legal: NE-17-24-03-W05M

Environmental

DC Amendment Proposal

An amendment to Direct Control District 168 to change the minimum parcel size from 0.98 acres to 1.20 acres, increase the sizing for Accessory Buildings under the Greenspace Cell, and replace Schedule B with an updated parcel plan.



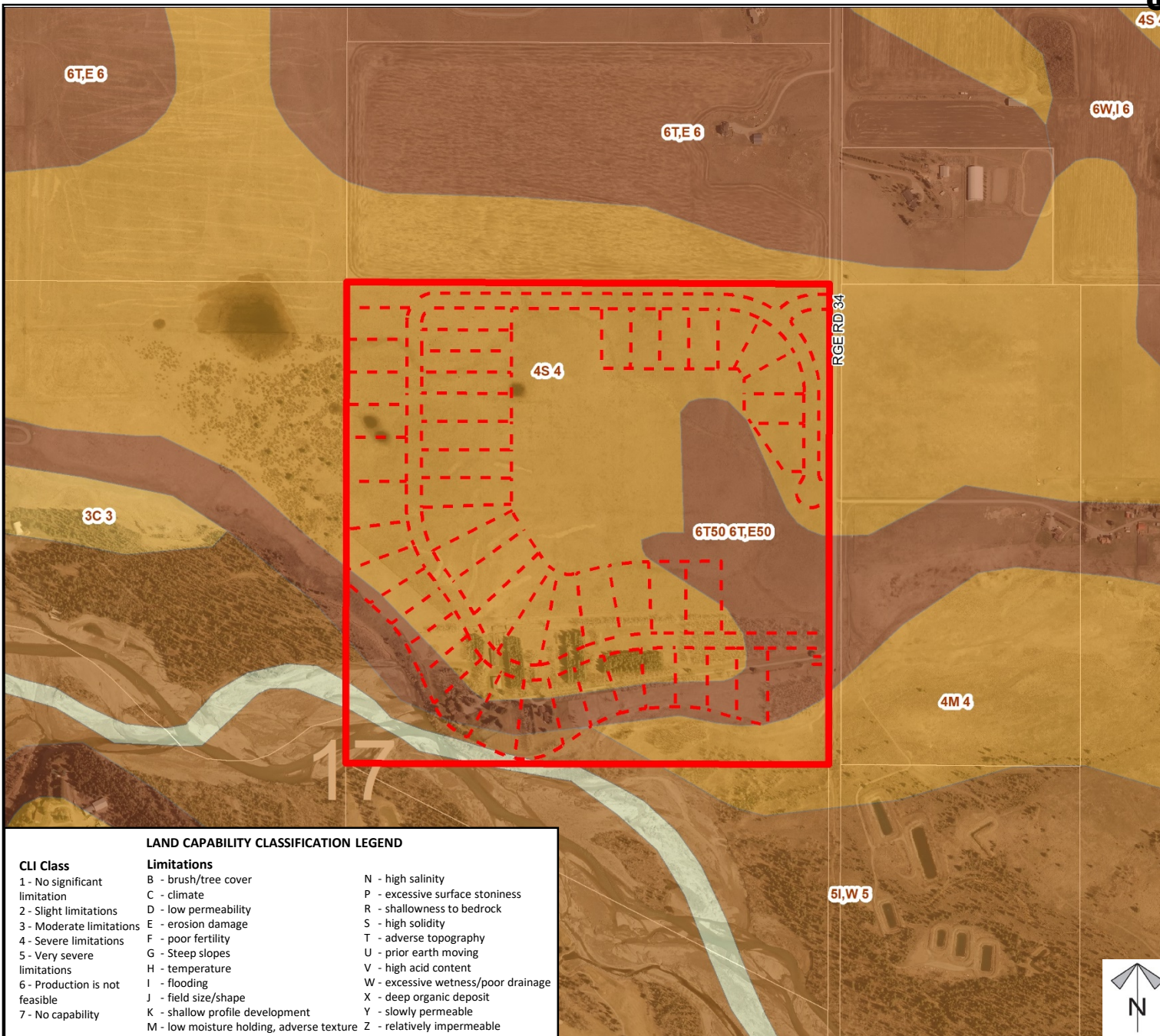
- Subject Lands
- Contour - 2 meters
- Riparian Setbacks
- Alberta Wetland Inventory
- Surface Water

Division: 02
Roll: 04717004
File: PL20210014
Printed: Feb 5, 2021
Legal: NE-17-24-03-W05M

Soil Classifications

DC Amendment Proposal

An amendment to Direct Control District 168 to change the minimum parcel size from 0.98 acres to 1.20 acres, increase the sizing for Accessory Buildings under the Greenspace Cell, and replace Schedule B with an updated parcel plan.



LAND CAPABILITY CLASSIFICATION LEGEND

CLI Class	Limitations	
1 - No significant limitation	B - brush/tree cover	N - high salinity
2 - Slight limitations	C - climate	P - excessive surface stoniness
3 - Moderate limitations	D - low permeability	R - shallowness to bedrock
4 - Severe limitations	E - erosion damage	S - high solidity
5 - Very severe limitations	F - poor fertility	T - adverse topography
6 - Production is not feasible	G - Steep slopes	U - prior earth moving
7 - No capability	H - temperature	V - high acid content
	I - flooding	W - excessive wetness/poor drainage
	J - field size/shape	X - deep organic deposit
	K - shallow profile development	Y - slowly permeable
	M - low moisture holding, adverse texture	Z - relatively impermeable



Division: 02
Roll: 04717004
File: PL20210014
Printed: Feb 5, 2021
Legal: NE-17-24-03-W05M

Landowner Circulation Area

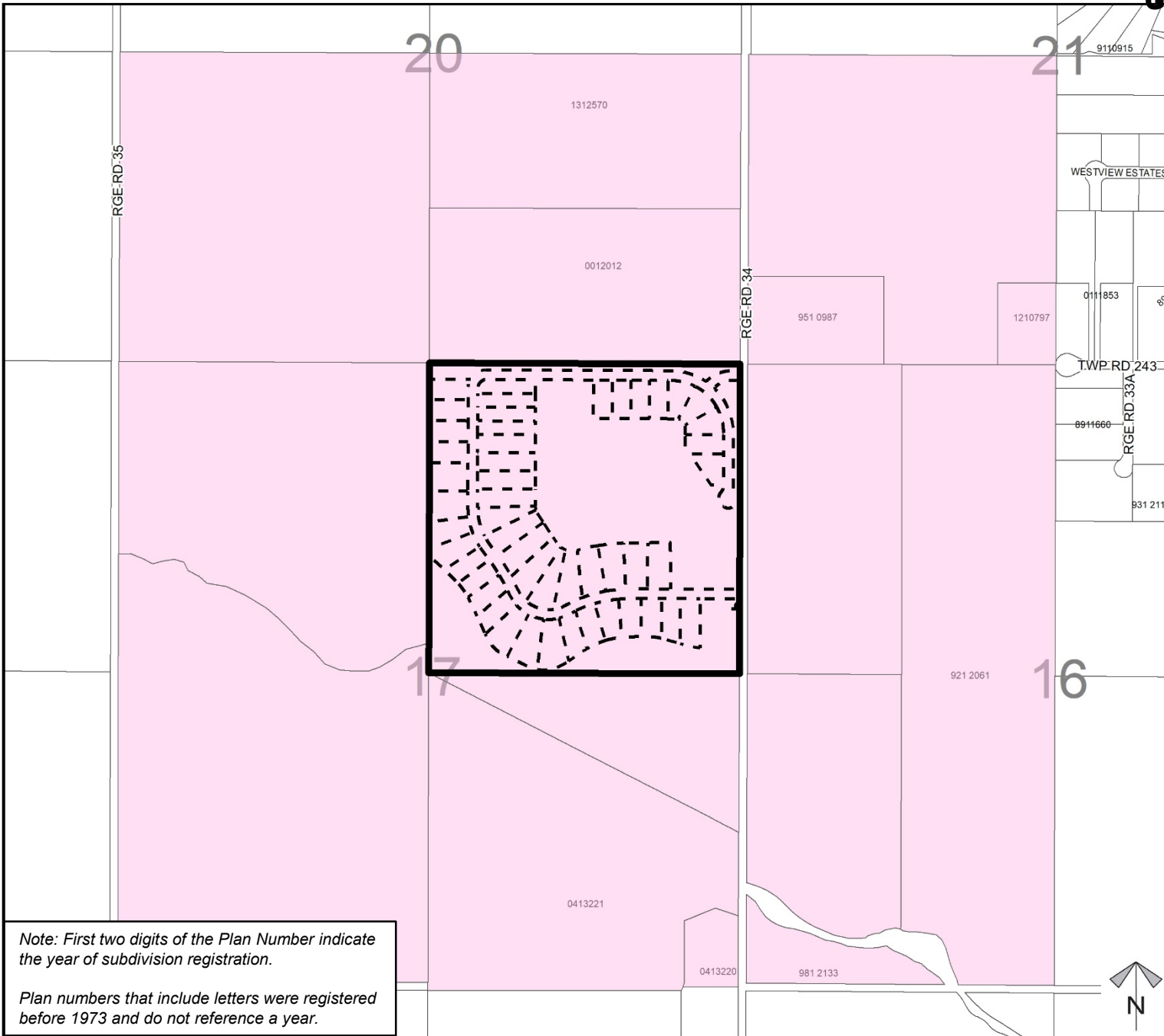
DC Amendment Proposal

An amendment to Direct Control District 168 to change the minimum parcel size from 0.98 acres to 1.20 acres, increase the sizing for Accessory Buildings under the Greenspace Cell, and replace Schedule B with an updated parcel plan.

Legend

- Support 
- Opposition 

Division: 02
Roll: 04717004
File: PL20210014
Printed: Feb 5, 2021
Legal: NE-17-24-03-W05M



Note: First two digits of the Plan Number indicate the year of subdivision registration.

Plan numbers that include letters were registered before 1973 and do not reference a year.