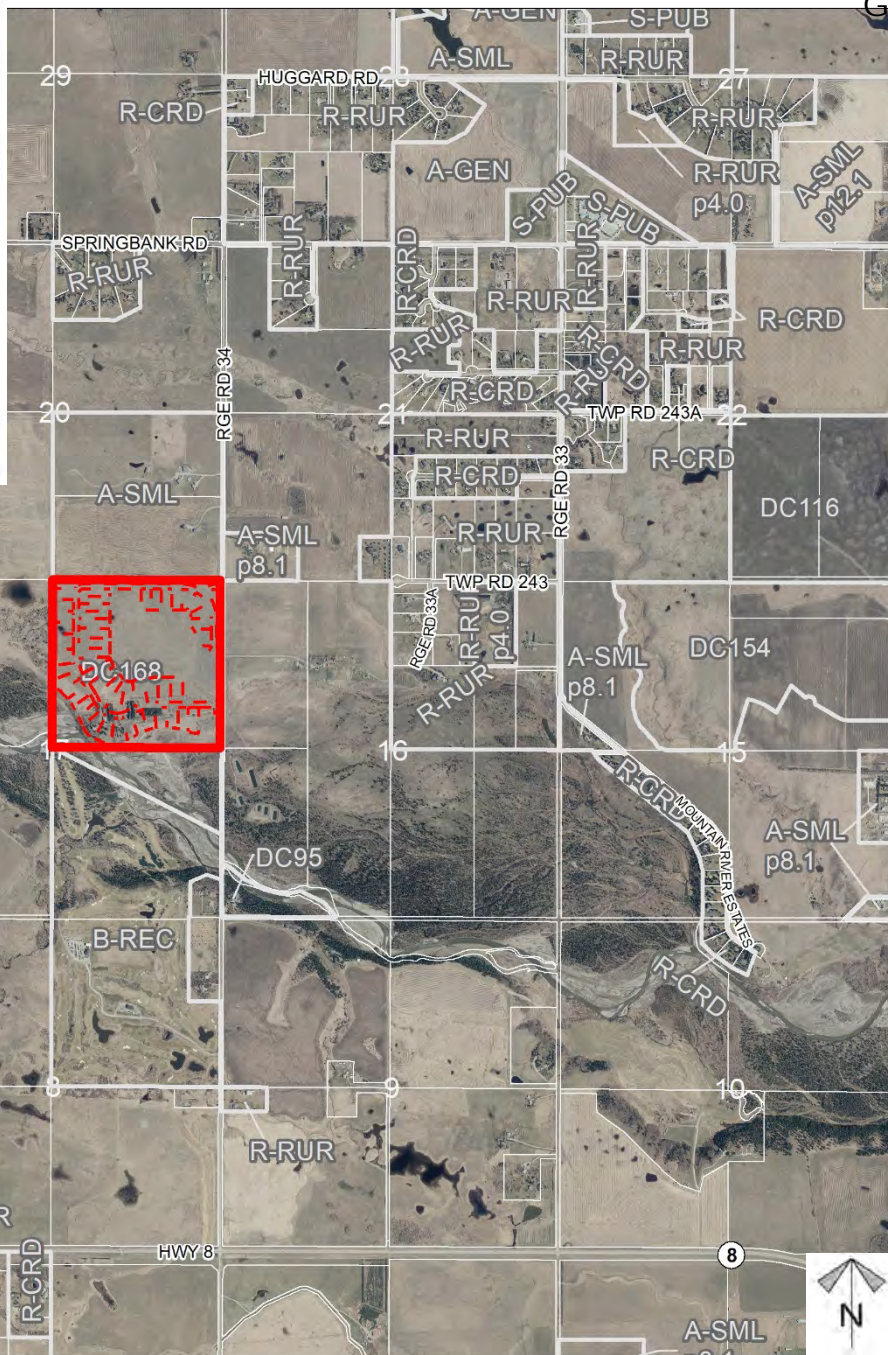
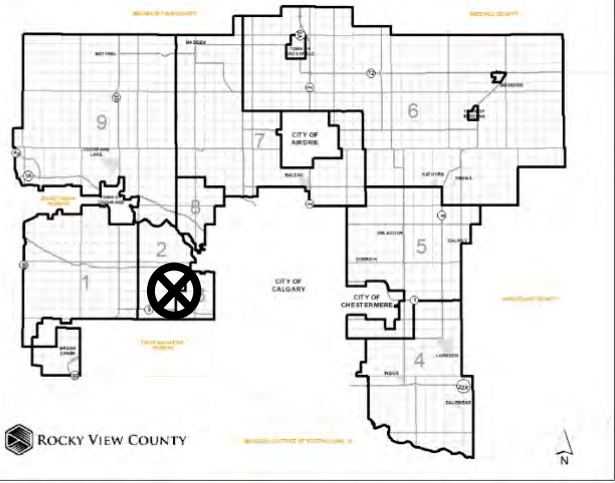


Location & Context

DC Amendment Proposal

An amendment to Direct Control District 168 to change the minimum parcel size from 0.98 acres to 1.20 acres, increase the sizing for Accessory Buildings under the Greenspace Cell, and replace Schedule B with an updated parcel plan.

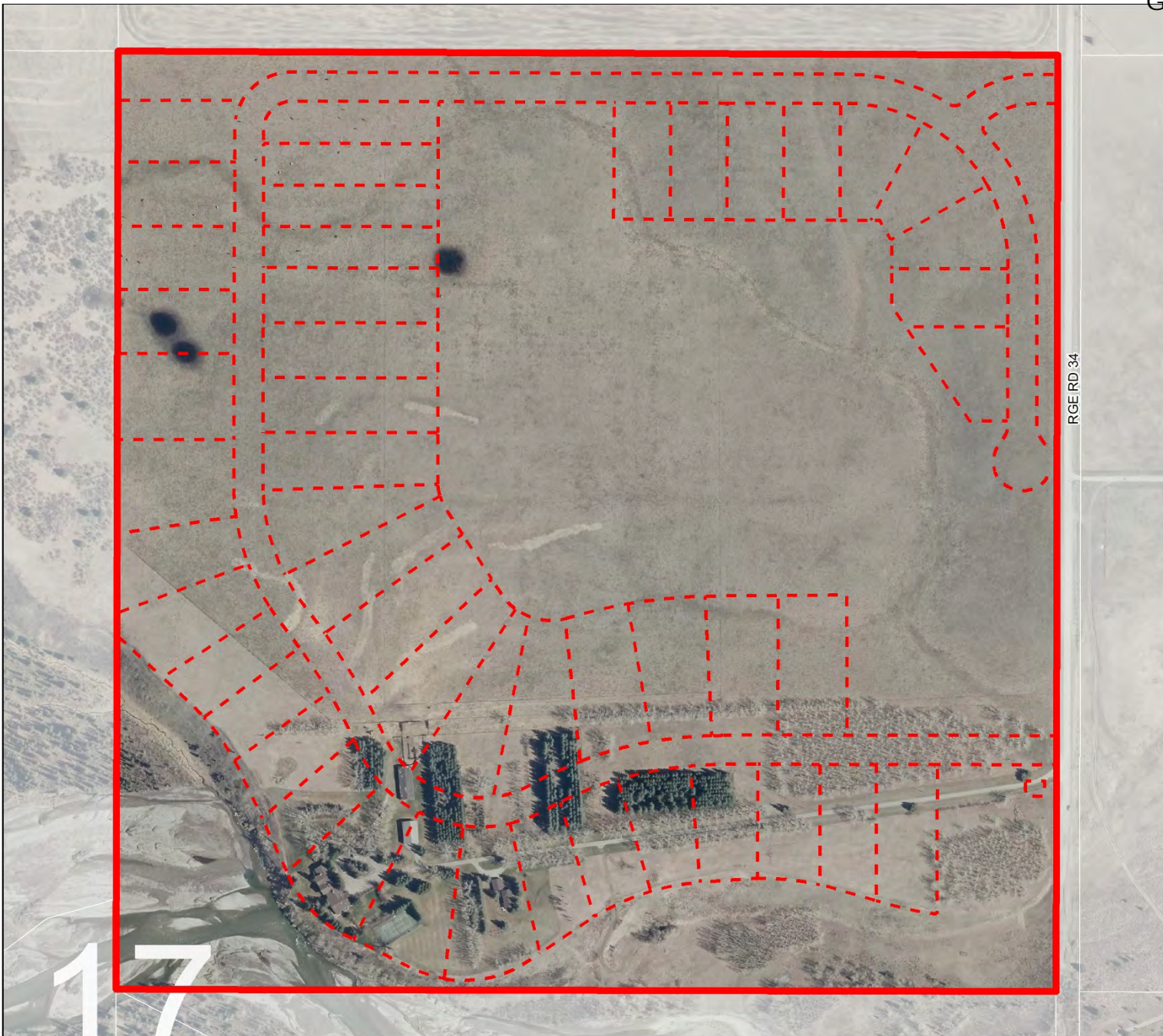
Division: 02
Roll: 04717004
File: PL20210014
Printed: Feb 5, 2021
Legal: NE-17-24-03-W05M



Development Proposal

DC Amendment Proposal

An amendment to Direct Control District 168 to change the minimum parcel size from 0.98 acres to 1.20 acres, increase the sizing for Accessory Buildings under the Greenspace Cell, and replace Schedule B with an updated parcel plan.

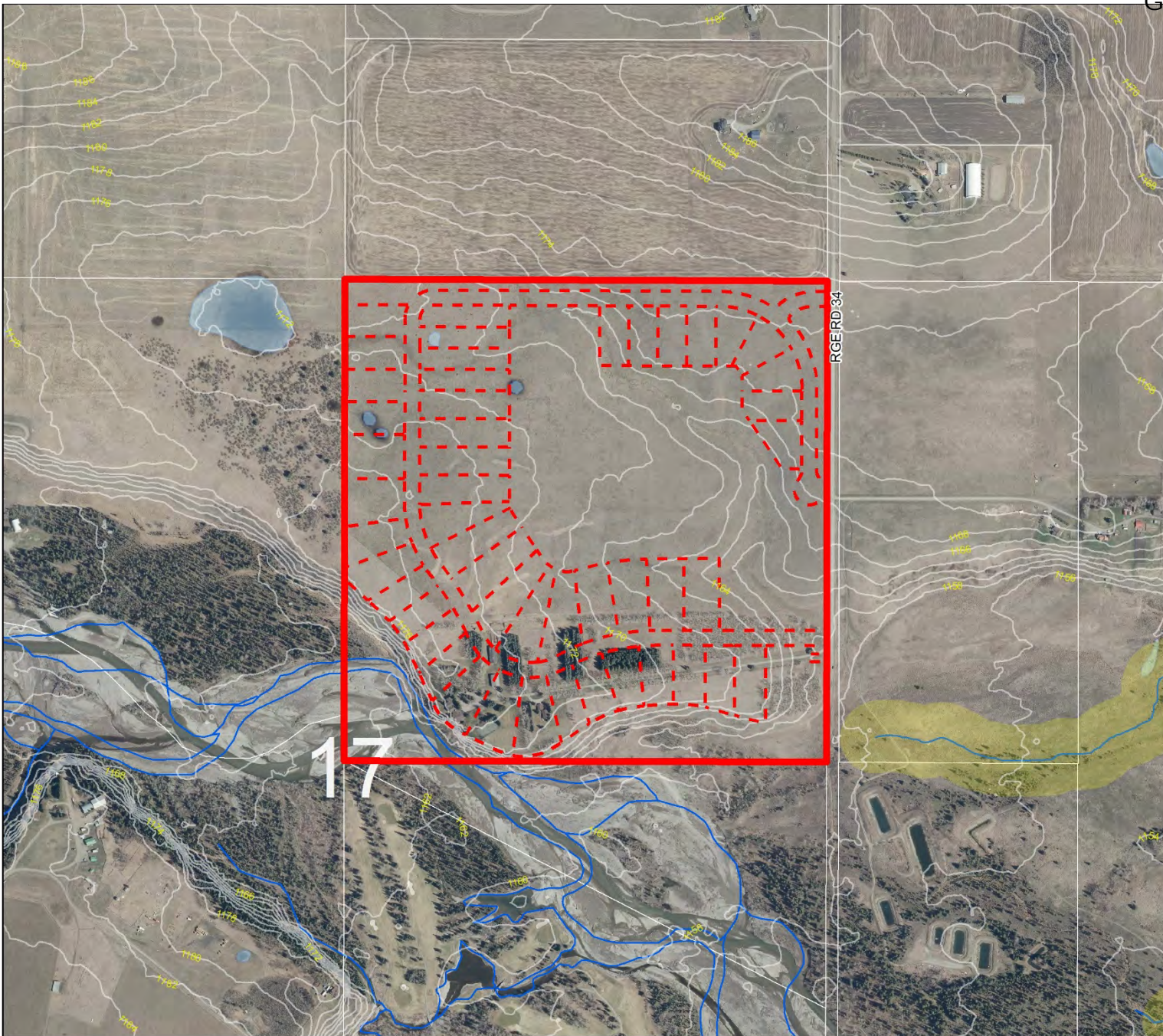


Division: 02
Roll: 04717004
File: PL20210014
Printed: Feb 5, 2021
Legal: NE-17-24-03-W05M

Environmental

DC Amendment Proposal

An amendment to Direct Control District 168 to change the minimum parcel size from 0.98 acres to 1.20 acres, increase the sizing for Accessory Buildings under the Greenspace Cell, and replace Schedule B with an updated parcel plan.



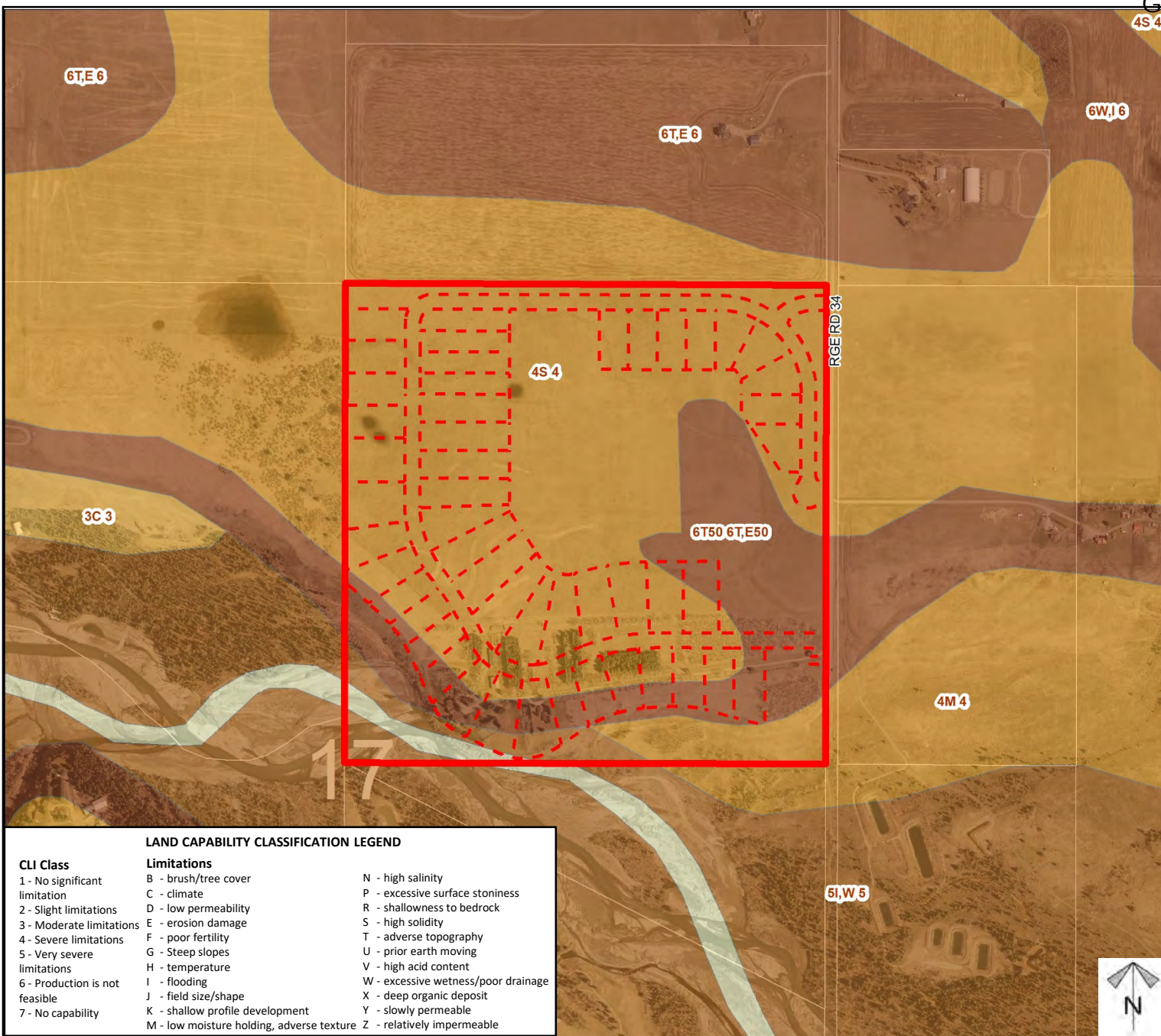
-  Subject Lands
-  Contour - 2 meters
-  Riparian Setbacks
-  Alberta Wetland Inventory
-  Surface Water

Division: 02
Roll: 04717004
File: PL20210014
Printed: Feb 5, 2021
Legal: NE-17-24-03-W05M

Soil Classifications

DC Amendment Proposal

An amendment to Direct Control District 168 to change the minimum parcel size from 0.98 acres to 1.20 acres, increase the sizing for Accessory Buildings under the Greenspace Cell, and replace Schedule B with an updated parcel plan.



LAND CAPABILITY CLASSIFICATION LEGEND	
CLI Class	Limitations
1 - No significant limitation	B - brush/tree cover
2 - Slight limitations	C - climate
3 - Moderate limitations	D - low permeability
4 - Severe limitations	E - erosion damage
5 - Very severe limitations	F - poor fertility
6 - Production is not feasible	G - Steep slopes
7 - No capability	H - temperature
	I - flooding
	J - field size/shape
	K - shallow profile development
	M - low moisture holding, adverse texture
	N - high salinity
	P - excessive surface stoniness
	R - shallowness to bedrock
	S - high solidity
	T - adverse topography
	U - prior earth moving
	V - high acid content
	W - excessive wetness/poor drainage
	X - deep organic deposit
	Y - slowly permeable
	Z - relatively impermeable



Division: 02
 Roll: 04717004
 File: PL20210014
 Printed: Feb 5, 2021
 Legal: NE-17-24-03-W05M

Landowner Circulation Area

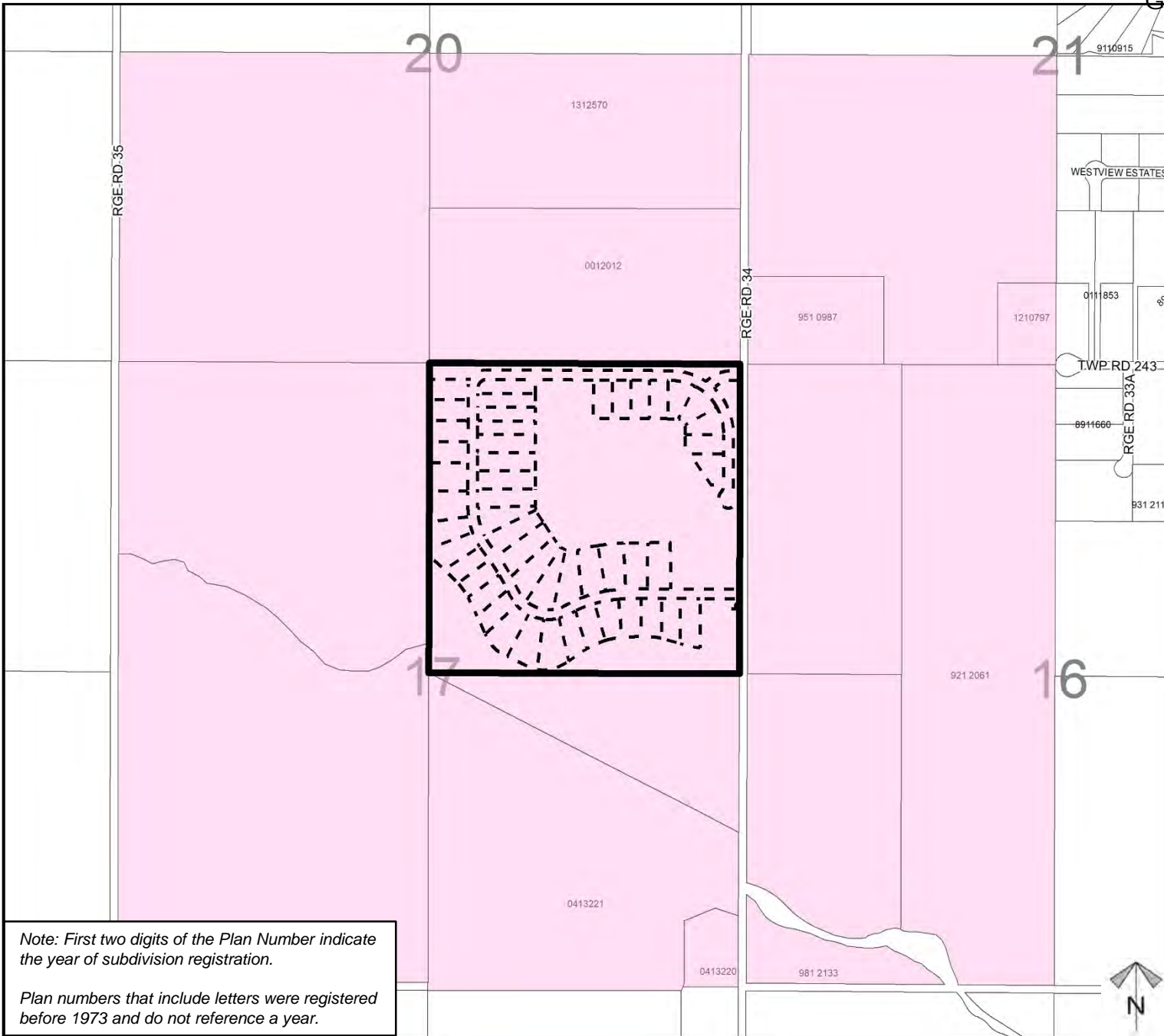
DC Amendment Proposal

An amendment to Direct Control District 168 to change the minimum parcel size from 0.98 acres to 1.20 acres, increase the sizing for Accessory Buildings under the Greenspace Cell, and replace Schedule B with an updated parcel plan.

Legend

- Support 
- Opposition 

Division: 02
Roll: 04717004
File: PL20210014
Printed: Feb 5, 2021
Legal: NE-17-24-03-W05M



Note: First two digits of the Plan Number indicate the year of subdivision registration.

Plan numbers that include letters were registered before 1973 and do not reference a year.