

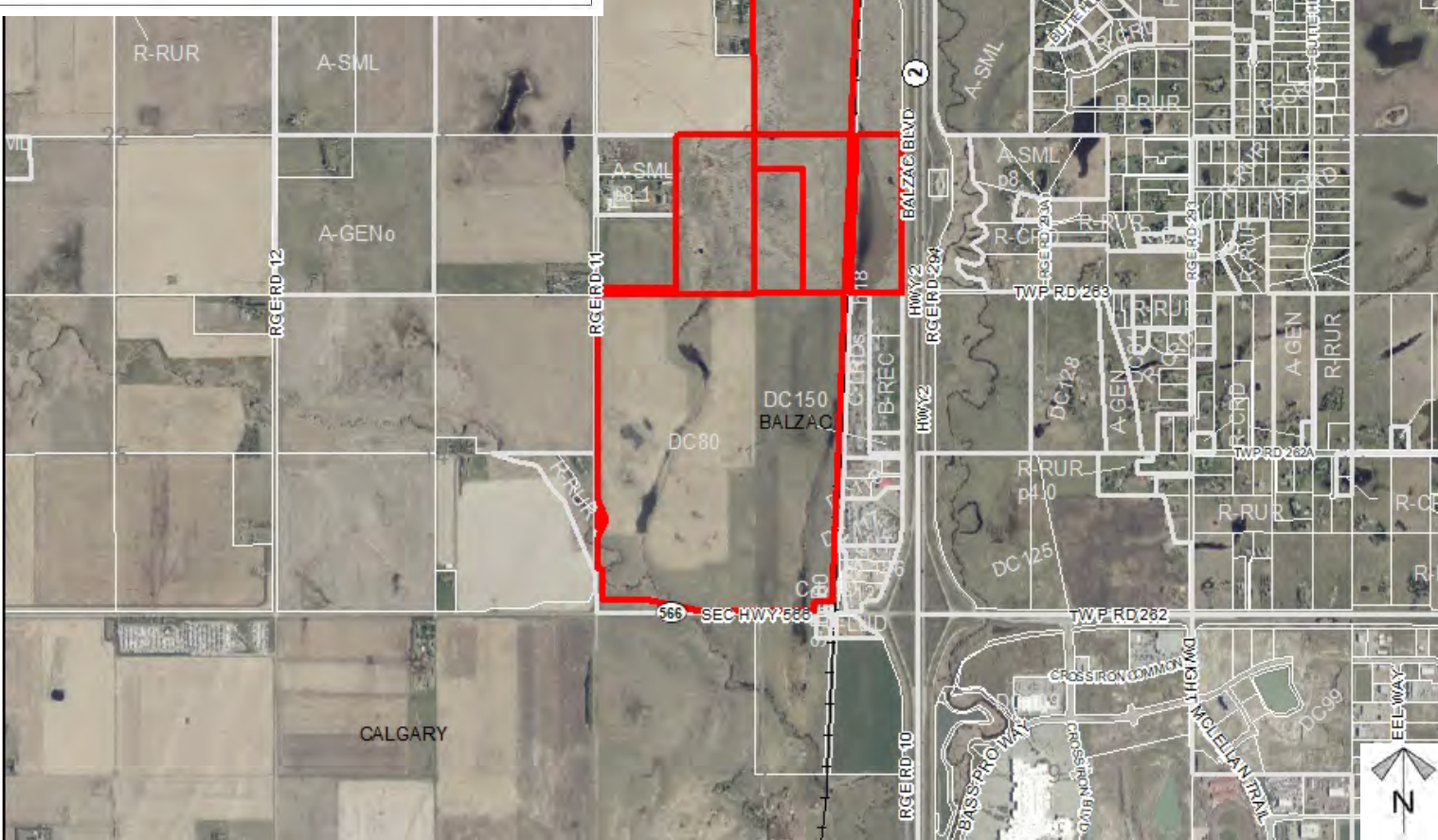
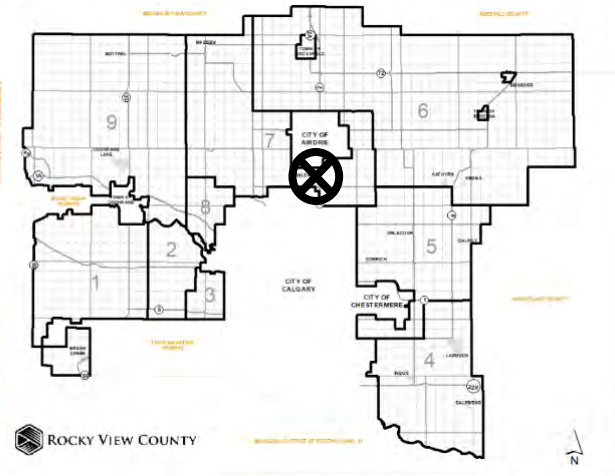
Location & Context

Conceptual Scheme Proposal

To adopt the Rocky Creek Conceptual Scheme that provides a policy framework to guide future redesignation and subdivision applications, in order to facilitate the development of a residential community with industrial and mixed uses.

Division: 7
Roll: 06513002/06524002/
06524007/06524001/
06524004
File: PL20200173
Legal: Lot:1 Block:5
Plan:0311824; within W-13-
26-01-W05M, SW/SE/NE-24-
26-01-W05M

Printed: January 6, 2021



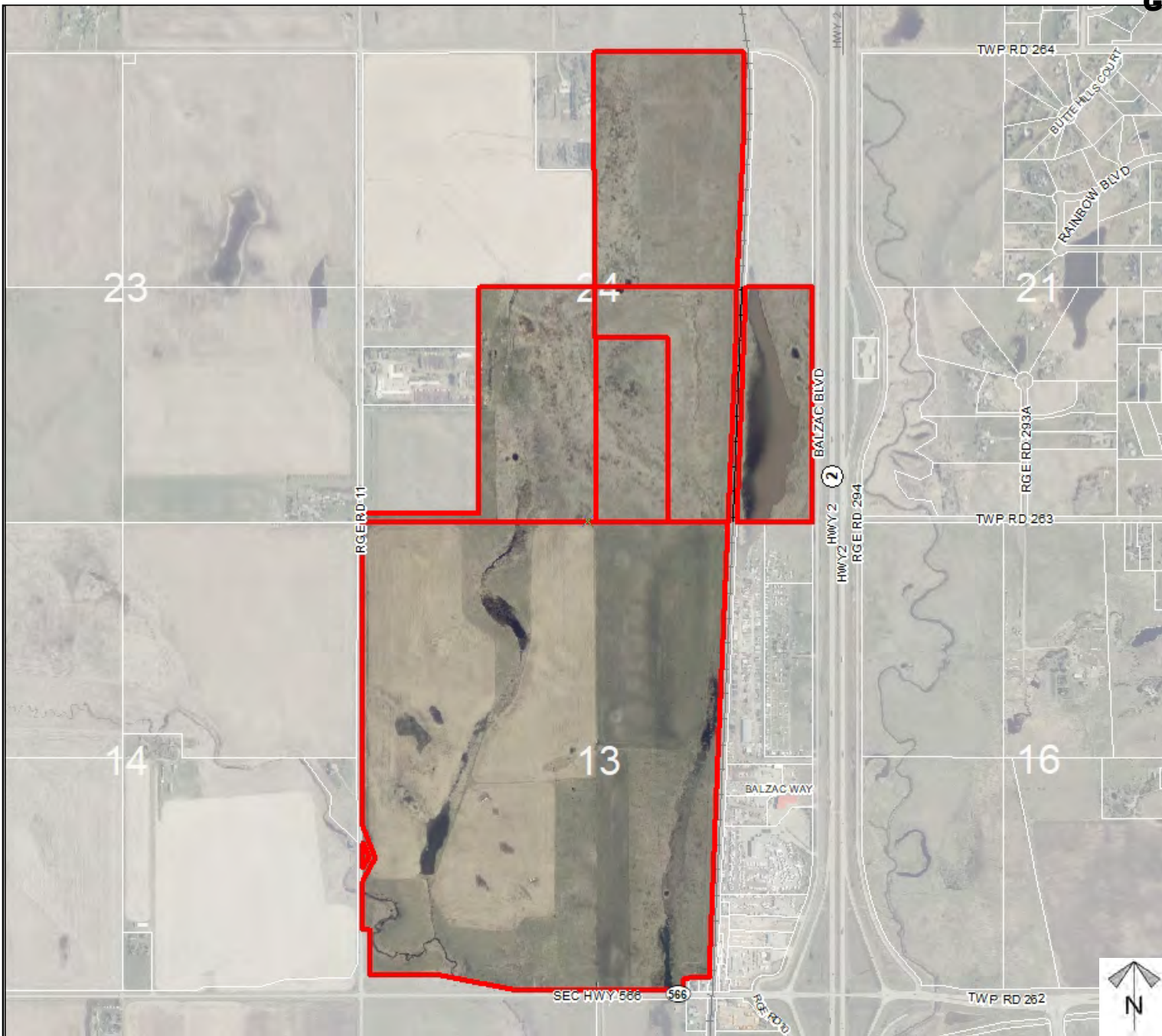
Development Proposal

Conceptual Scheme Proposal

To adopt the Rocky Creek Conceptual Scheme that provides a policy framework to guide future redesignation and subdivision applications, in order to facilitate the development of a residential community with industrial and mixed uses.

Division: 7
Roll: 06513002/06524002/
06524007/06524001/
06524004
File: PL20200173
Legal: Lot:1 Block:5
Plan:0311824; within W-13-
26-01-W05M, SW/SE/NE-24-
26-01-W05M

Printed: January 6, 2021



Development Concept

Conceptual Scheme Proposal

To adopt the Rocky Creek Conceptual Scheme that provides a policy framework to guide future redesignation and subdivision applications, in order to facilitate the development of a residential community with industrial and mixed uses.

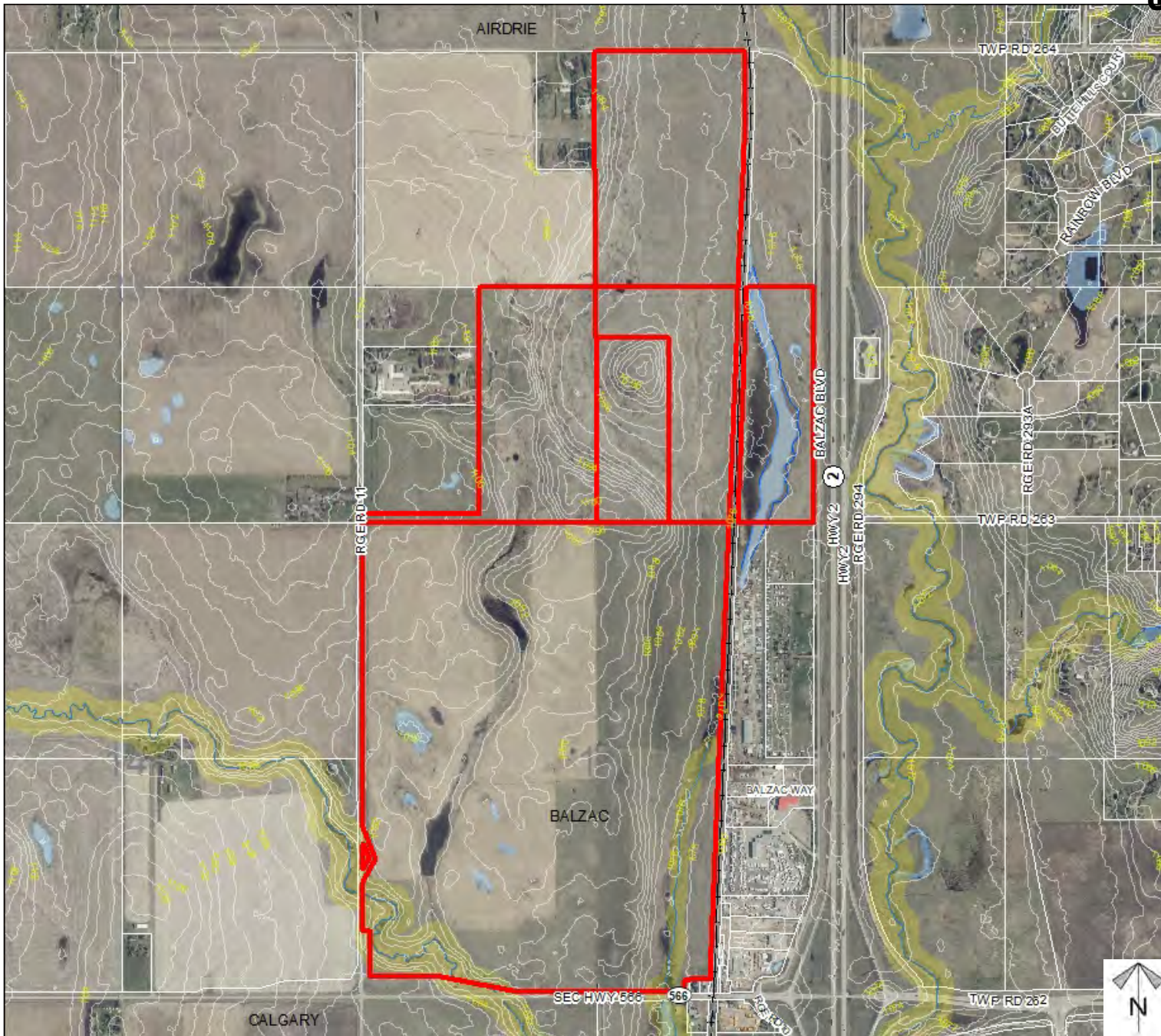


Division: 7
 Roll: 06513002/06524002/
 06524007/06524001/
 06524004
 File: PL20200173
 Legal: Lot:1 Block:5
 Plan:0311824; within W-13-
 26-01-W05M, SW/SE/NE-24-
 26-01-W05M

Environmental

Conceptual Scheme Proposal

To adopt the Rocky Creek Conceptual Scheme that provides a policy framework to guide future redesignation and subdivision applications, in order to facilitate the development of a residential community with industrial and mixed uses.



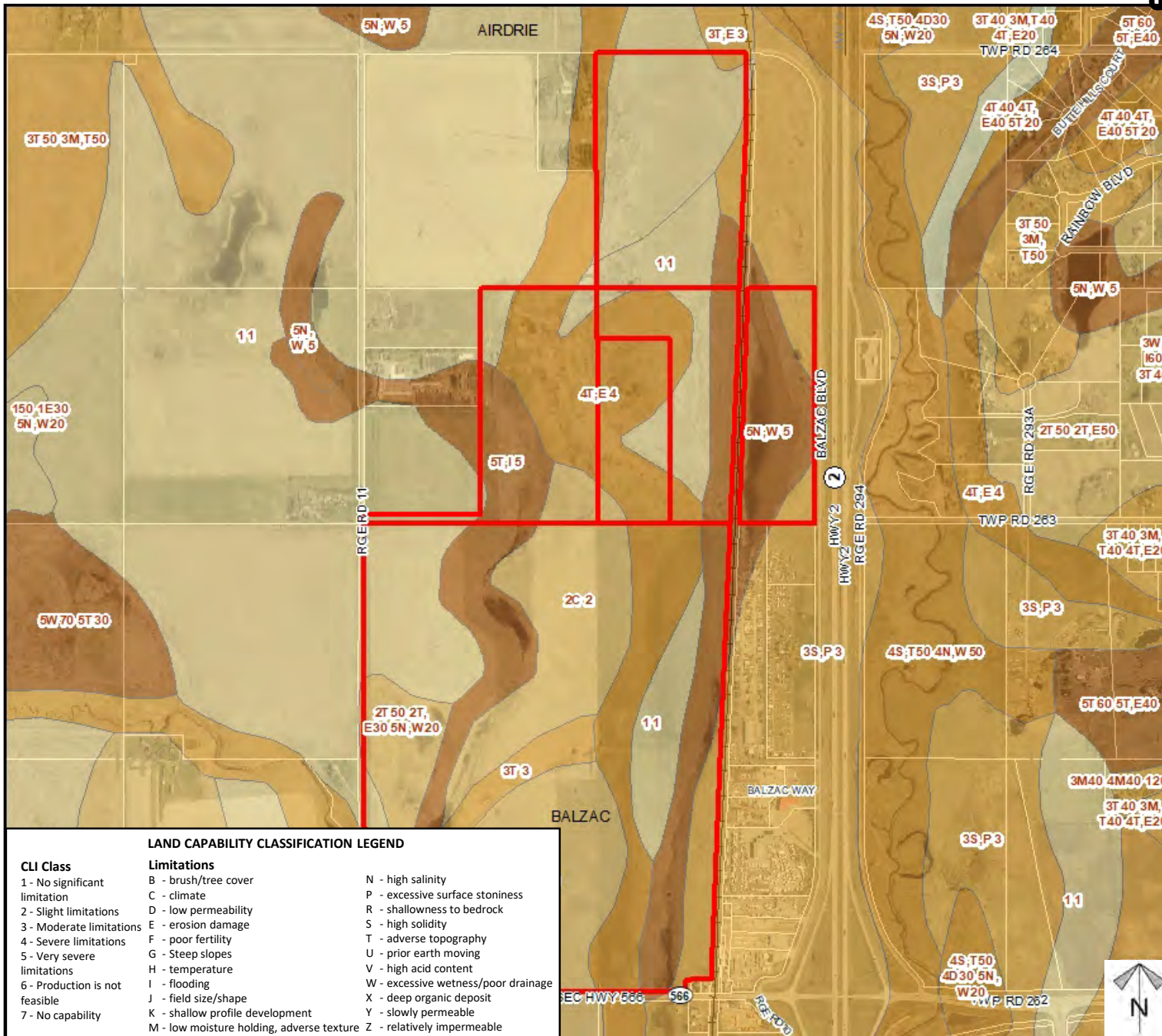
-  Subject Lands
-  Contour - 2 meters
-  Riparian Setbacks
-  Alberta Wetland Inventory
-  Surface Water

Division: 7
 Roll: 06513002/06524002/
 06524007/06524001/
 06524004
 File: PL20200173
 Legal: Lot:1 Block:5
 Plan:0311824; within W-13-
 26-01-W05M, SW/SE/NE-24-
 26-01-W05M

Soil Classifications

Conceptual Scheme Proposal

To adopt the Rocky Creek Conceptual Scheme that provides a policy framework to guide future redesignation and subdivision applications, in order to facilitate the development of a residential community with industrial and mixed uses.



LAND CAPABILITY CLASSIFICATION LEGEND

CLI Class	Limitations	
1 - No significant limitation	B - brush/tree cover	N - high salinity
2 - Slight limitations	C - climate	P - excessive surface stoniness
3 - Moderate limitations	D - low permeability	R - shallowness to bedrock
4 - Severe limitations	E - erosion damage	S - high solidity
5 - Very severe limitations	F - poor fertility	T - adverse topography
6 - Production is not feasible	G - Steep slopes	U - prior earth moving
7 - No capability	H - temperature	V - high acid content
	I - flooding	W - excessive wetness/poor drainage
	J - field size/shape	X - deep organic deposit
	K - shallow profile development	Y - slowly permeable
	M - low moisture holding, adverse texture	Z - relatively impermeable

Division: 7
 Roll: 06513002/06524002/
 06524007/06524001/
 06524004
 File: PL20200173
 Legal: Lot:1 Block:5
 Plan:0311824; within W-13-
 26-01-W05M, SW/SE/NE-24-
 26-01-W05M

**Landowner
Circulation Area**

**Conceptual Scheme
Proposal**

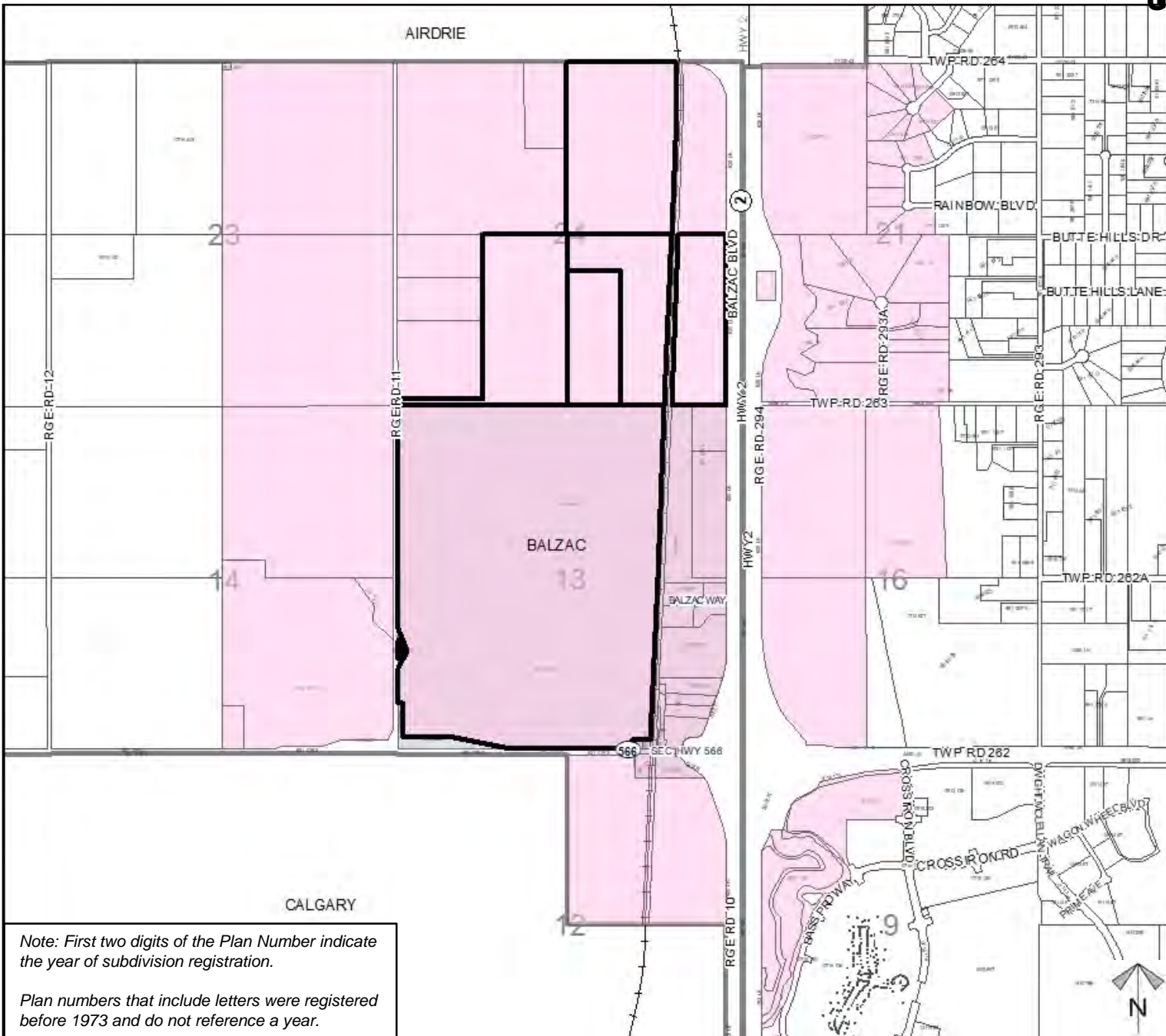
To adopt the Rocky Creek Conceptual Scheme that provides a policy framework to guide future redesignation and subdivision applications, in order to facilitate the development of a residential community with industrial and mixed uses.

Legend

- Support 
- Opposition 

Division: 7
Roll: 06513002/06524002/
06524007/06524001/
06524004
File: PL20200173
Legal: Lot:1 Block:5
Plan:0311824; within W-13-
26-01-W05M, SW/SE/NE-24-
26-01-W05M

Printed: January 6, 2021



Note: First two digits of the Plan Number indicate the year of subdivision registration.

Plan numbers that include letters were registered before 1973 and do not reference a year.