

## Location & Context

### Redesignation Proposal

To redesignate the subject land from Agricultural, General District (A-GEN) and Agricultural, Small Parcel District (A-SMLp8.1) to:

Industrial, Light District (I-LHT)

Special, Public Service District (S-PUB)

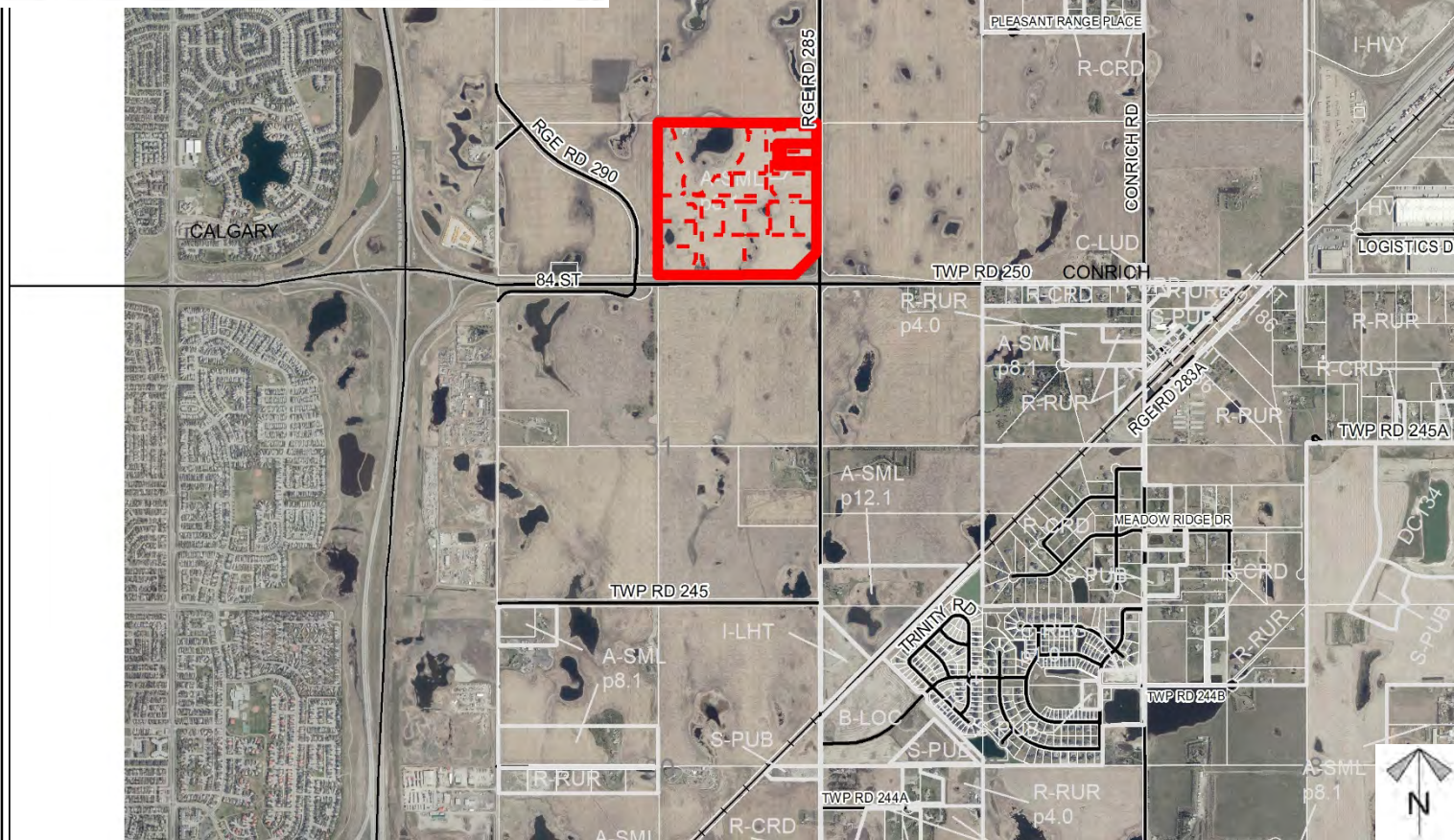
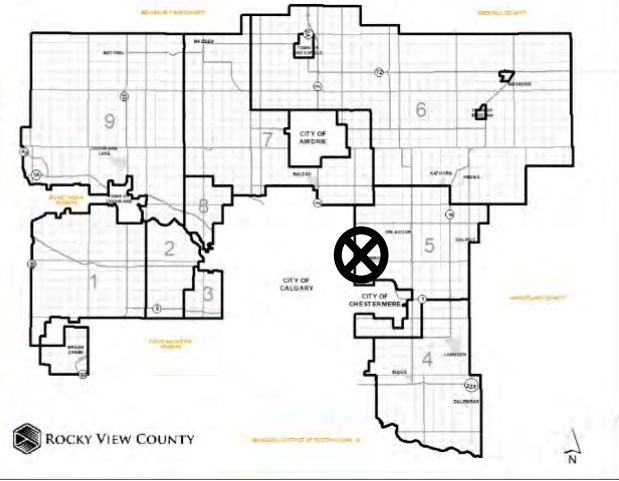
Special, Natural Open Space District (S-NOS)

Special, Parks and Recreation District (S-PRK)

in order to facilitate the development of a full-serviced industrial park.

Division: 5  
Roll: 05306005 / 05306001  
File: PL20200151  
Legal: SE-06-25-28-W04M

Printed: November 5, 2020





# Development Proposal

## Redesignation Proposal

To redesignate the subject land from Agricultural, General District (A-GEN) and Agricultural, Small Parcel District (A-SMLp8.1) to:

- Industrial, Light District (I-LHT)
- Special, Public Service District (S-PUB)
- Special, Natural Open Space District (S-NOS)
- Special, Parks and Recreation District (S-PRK)

in order to facilitate the development of a full-serviced industrial park.

Division: 5  
Roll: 05306005 / 05306001  
File: PL20200151  
Legal: SE-06-25-28-W04M

Printed: November 5, 2020



RGERD 285





## Environmental

### Redesignation Proposal

To redesignate the subject land from Agricultural, General District (A-GEN) and Agricultural, Small Parcel District (A-SMLp8.1) to:

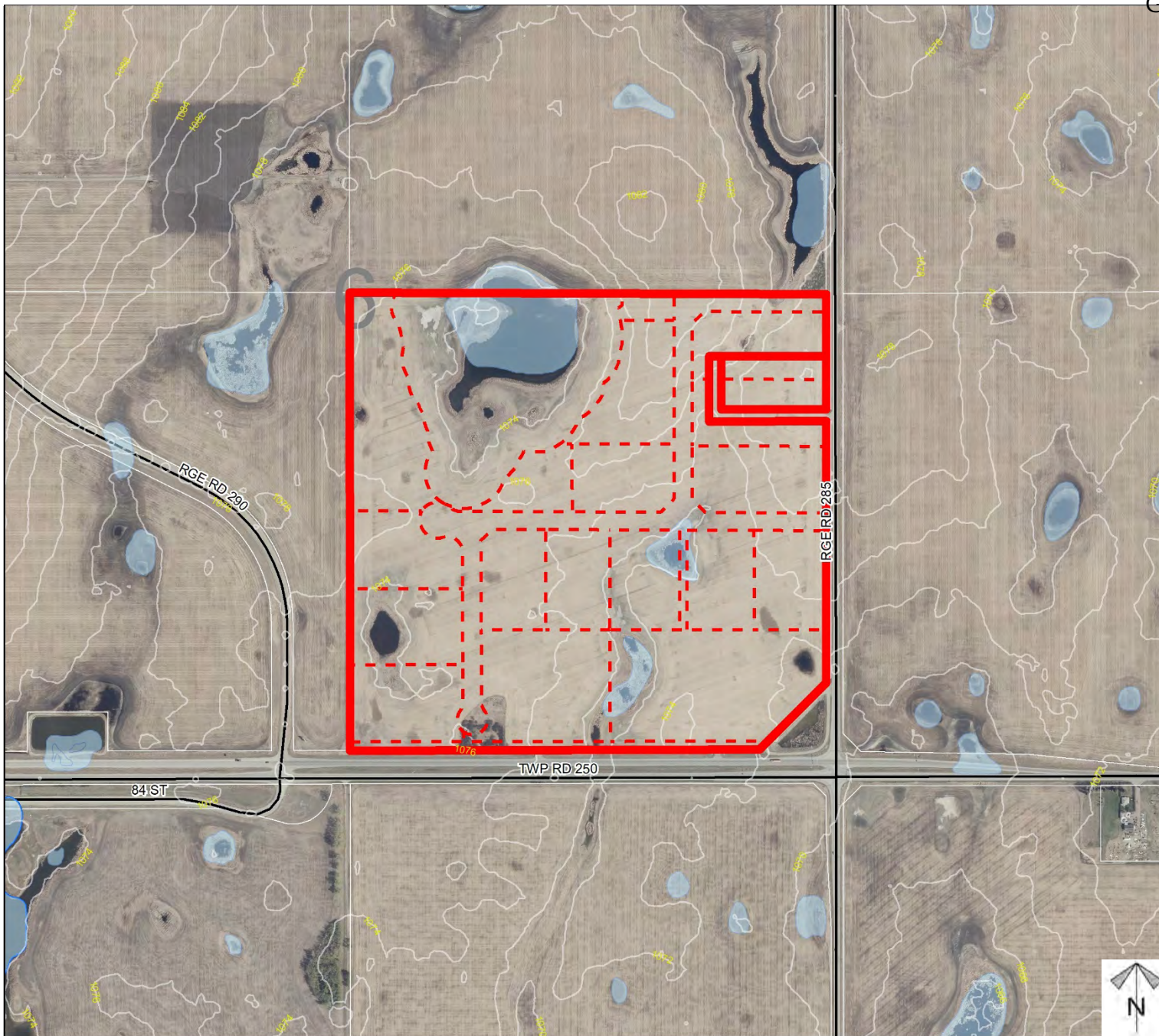
Industrial, Light District (I-LHT)

Special, Public Service District (S-PUB)

Special, Natural Open Space District (S-NOS)

Special, Parks and Recreation District (S-PRK)

-  Subject Lands
-  Contour - 2 meters
-  Riparian Setbacks
-  Alberta Wetland Inventory
-  Surface Water



Division: 5  
 Roll: 05306005 / 05306001  
 File: PL20200151  
 Legal: SE-06-25-28-W04M

Printed: November 5, 2020



# Soil Classifications

## Redesignation Proposal

To redesignate the subject land from Agricultural, General District (A-GEN) and Agricultural, Small Parcel District (A-SMLp8.1) to:

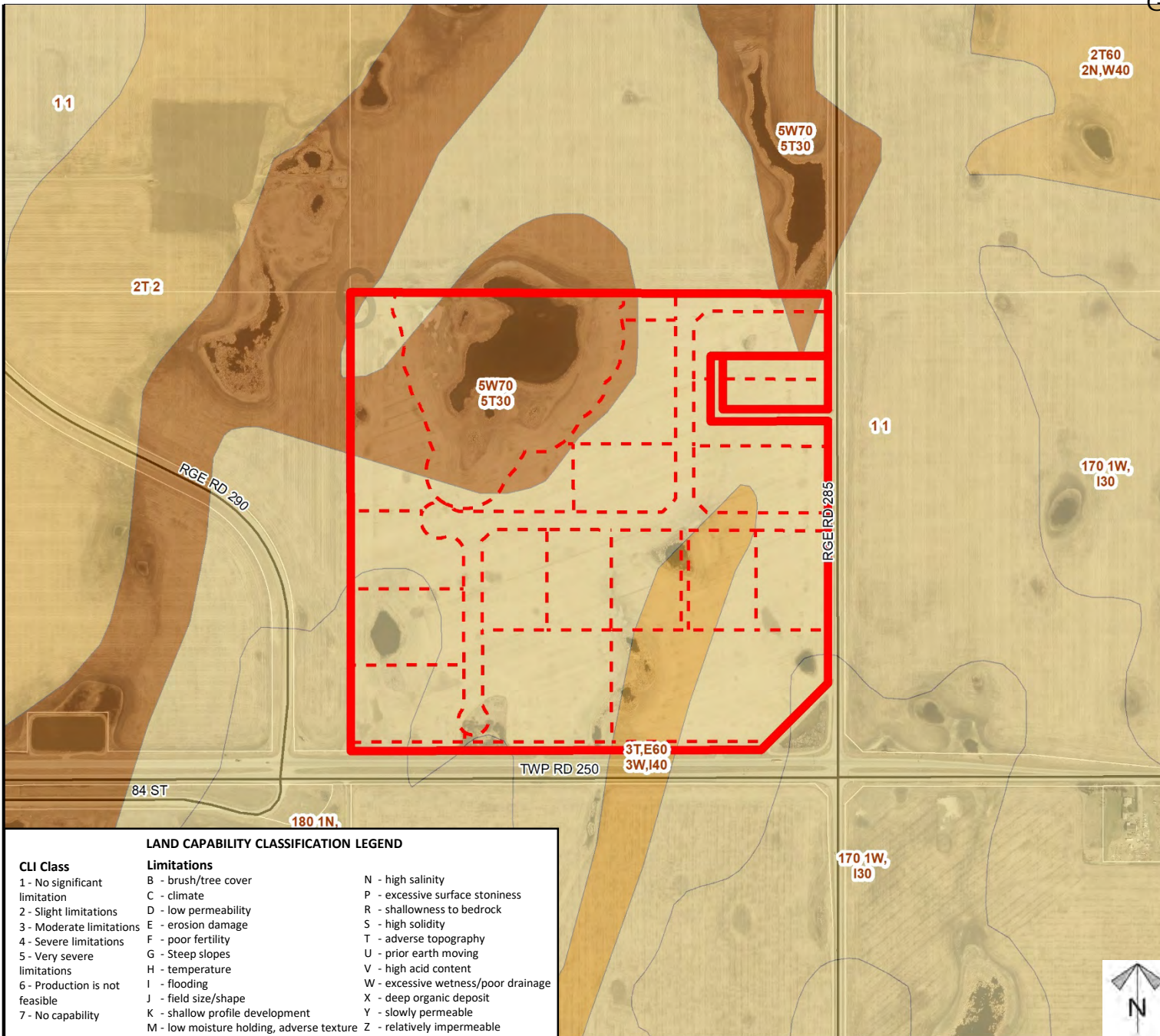
Industrial, Light District (I-LHT)

Special, Public Service District (S-PUB)

Special, Natural Open Space District (S-NOS)

Special, Parks and Recreation District (S-PRK)

in order to facilitate the development of a full-serviced industrial park.



**LAND CAPABILITY CLASSIFICATION LEGEND**

CLI Class	Limitations
1 - No significant limitation	B - brush/tree cover
2 - Slight limitations	C - climate
3 - Moderate limitations	D - low permeability
4 - Severe limitations	E - erosion damage
5 - Very severe limitations	F - poor fertility
6 - Production is not feasible	G - Steep slopes
7 - No capability	H - temperature
	I - flooding
	J - field size/shape
	K - shallow profile development
	M - low moisture holding, adverse texture
	N - high salinity
	P - excessive surface stoniness
	R - shallowness to bedrock
	S - high solidity
	T - adverse topography
	U - prior earth moving
	V - high acid content
	W - excessive wetness/poor drainage
	X - deep organic deposit
	Y - slowly permeable
	Z - relatively impermeable



Division: 5  
 Roll: 05306005 / 05306001  
 File: PL20200151  
 Legal: SE-06-25-28-W04M

Printed: November 5, 2020

# Landowner Circulation Area

## Redesignation Proposal

To redesignate the subject land from Agricultural, General District (A-GEN) and Agricultural, Small Parcel District (A-SMLp8.1) to:

Industrial, Light District (I-LHT)


Special, Public Service District (S-PUB)

Special, Natural Open Space District (S-NOS)

Special, Parks and Recreation District (S-PRK)

in order to facilitate the development of a full-serviced industrial park.

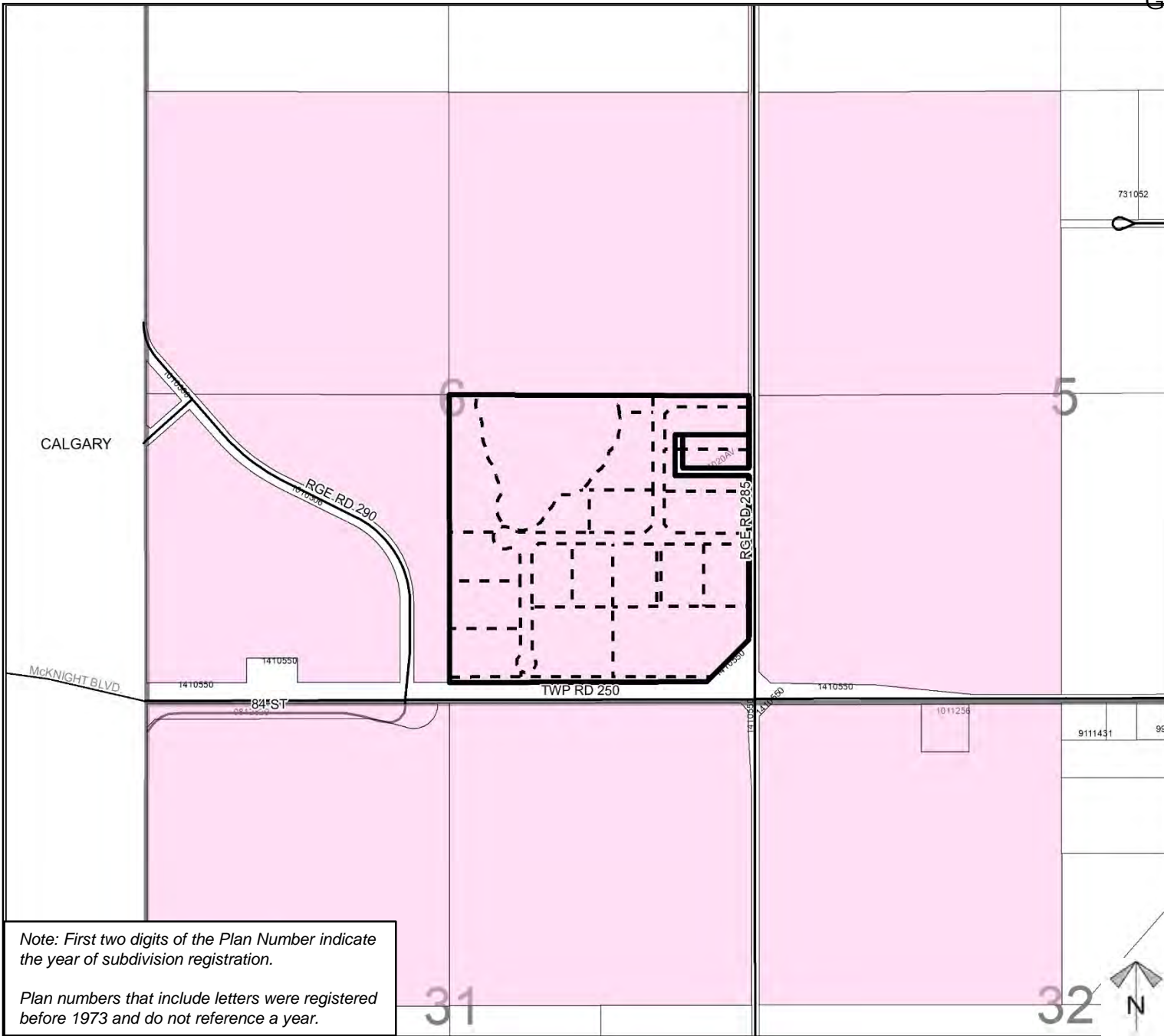
### Legend

Support 

Opposition 

Division: 5  
 Roll: 05306005 / 05306001  
 File: PL20200151  
 Legal: SE-06-25-28-W04M

Printed: November 5, 2020



Note: First two digits of the Plan Number indicate the year of subdivision registration.

Plan numbers that include letters were registered before 1973 and do not reference a year.