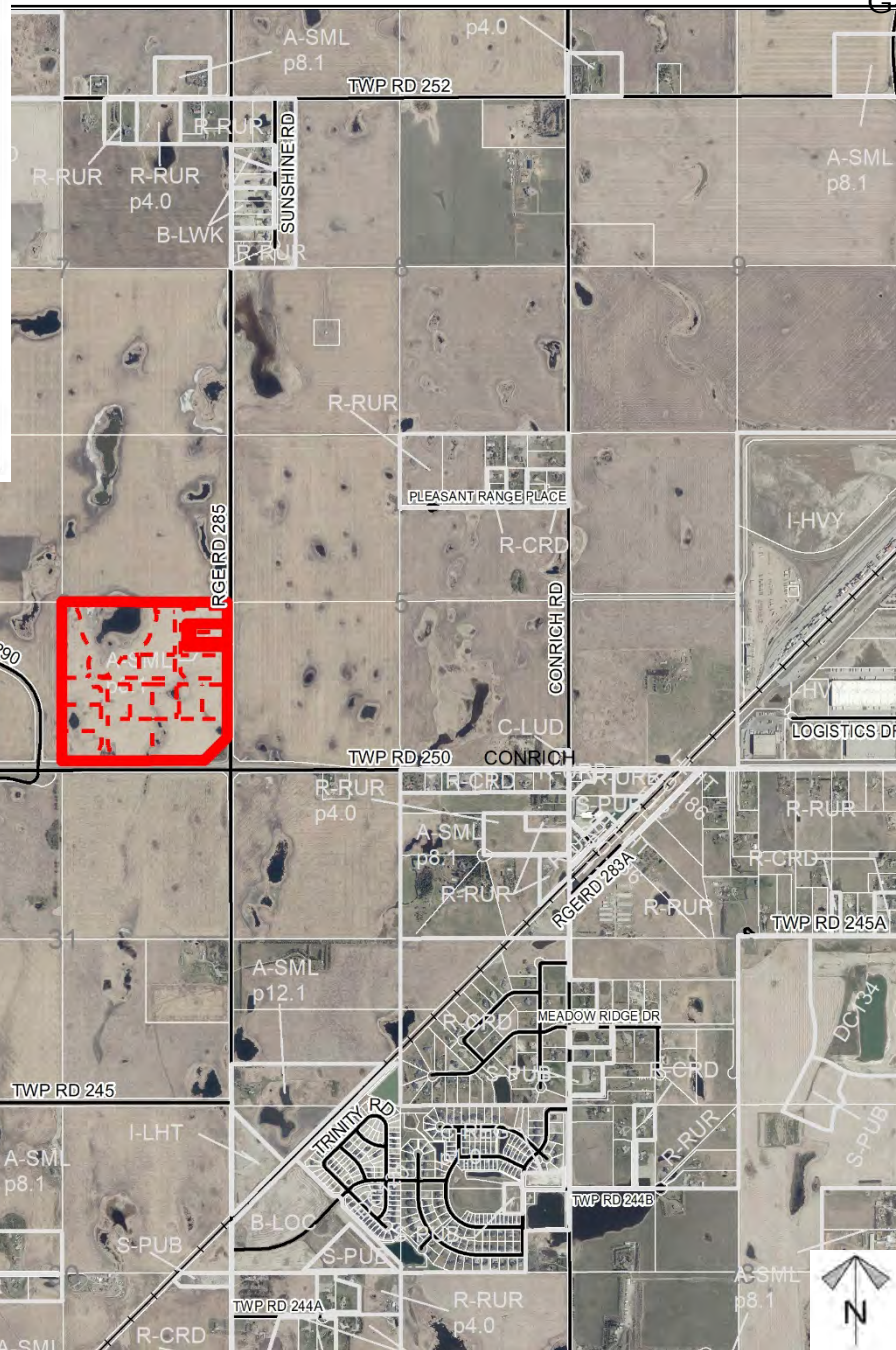
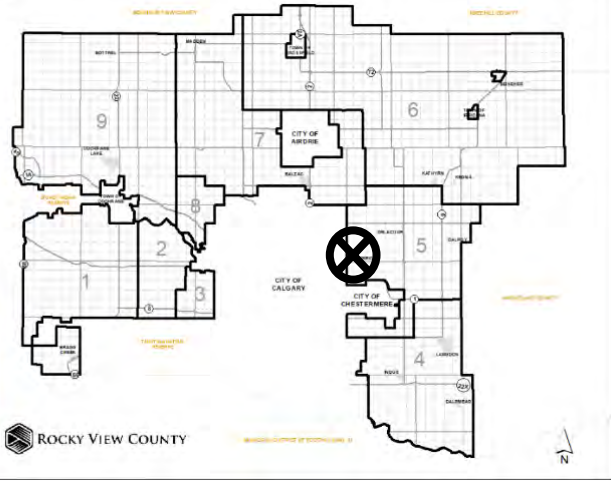


## Location & Context

### Conceptual Scheme Proposal

To adopt the Bridge Industrial Park Conceptual Scheme that provides a policy framework to guide future redesignation and subdivision applications for a full-served industrial park.



Division: 5  
 Roll: 05306005 / 05306001  
 File: PL20200150  
 Legal: SE-06-25-28-W04M

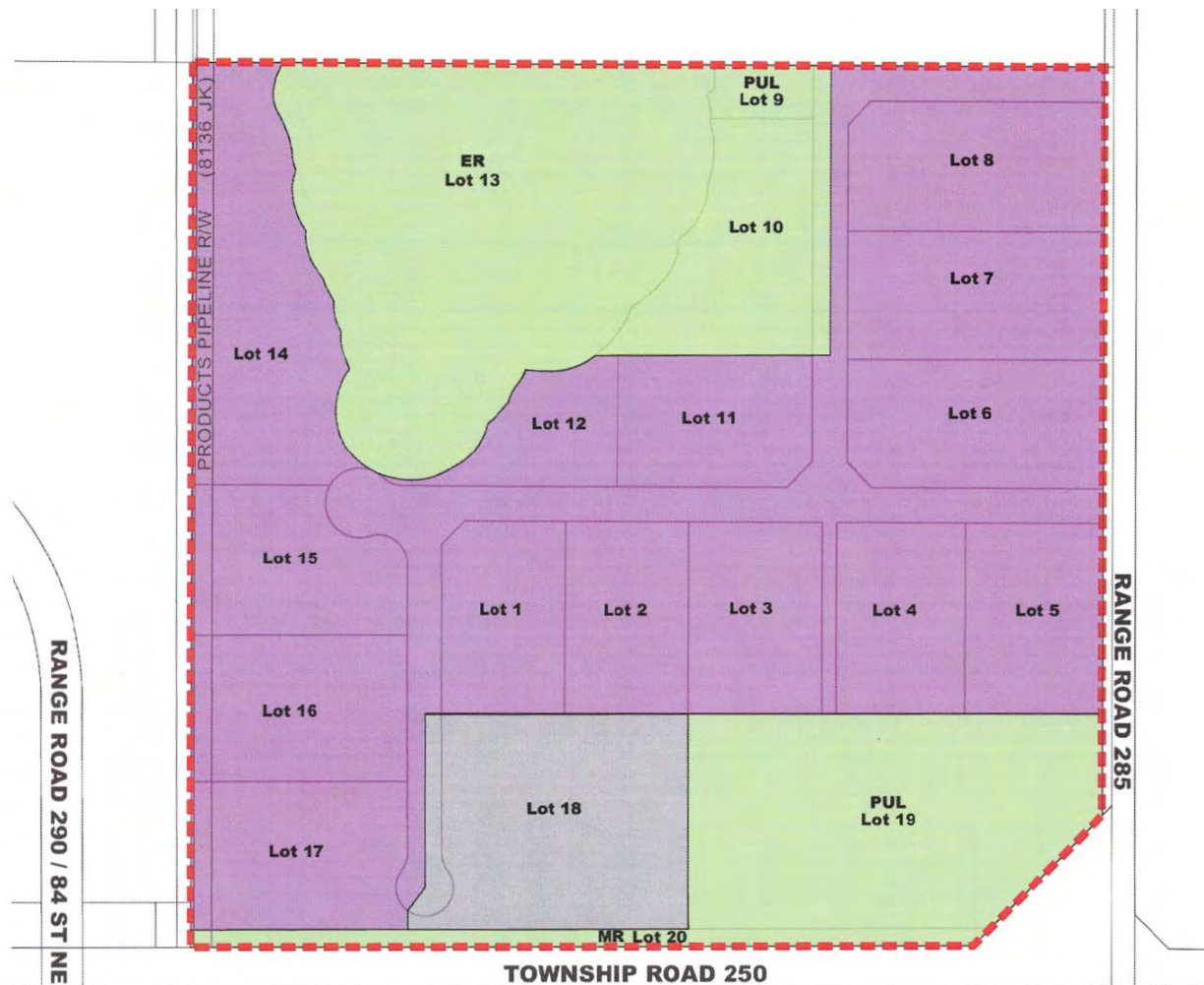
Printed: November 5, 2020



# Development Concept

## Conceptual Scheme Proposal

To adopt the Bridge Industrial Park Conceptual Scheme that provides a policy framework to guide future redesignation and subdivision applications for a full-served industrial park.



**Legend**

- Conceptual Scheme Boundary
- Special, Public Service District (MR, ER, PUL & Private Institutional Site)
- Industrial, Light District (I-LHT)
- Direct Control District (Private Irrigation Parcel)



Division: 5  
 Roll: 05306005 / 05306001  
 File: PL20200150  
 Legal: SE-06-25-28-W04M

Printed: November 5, 2020

# Development Proposal

## Conceptual Scheme Proposal

To adopt the Bridge Industrial Park Conceptual Scheme that provides a policy framework to guide future redesignation and subdivision applications for a full-served industrial park.

Division: 5  
Roll: 05306005 / 05306001  
File: PL20200150  
Legal: SE-06-25-28-W04M

Printed: November 5, 2020

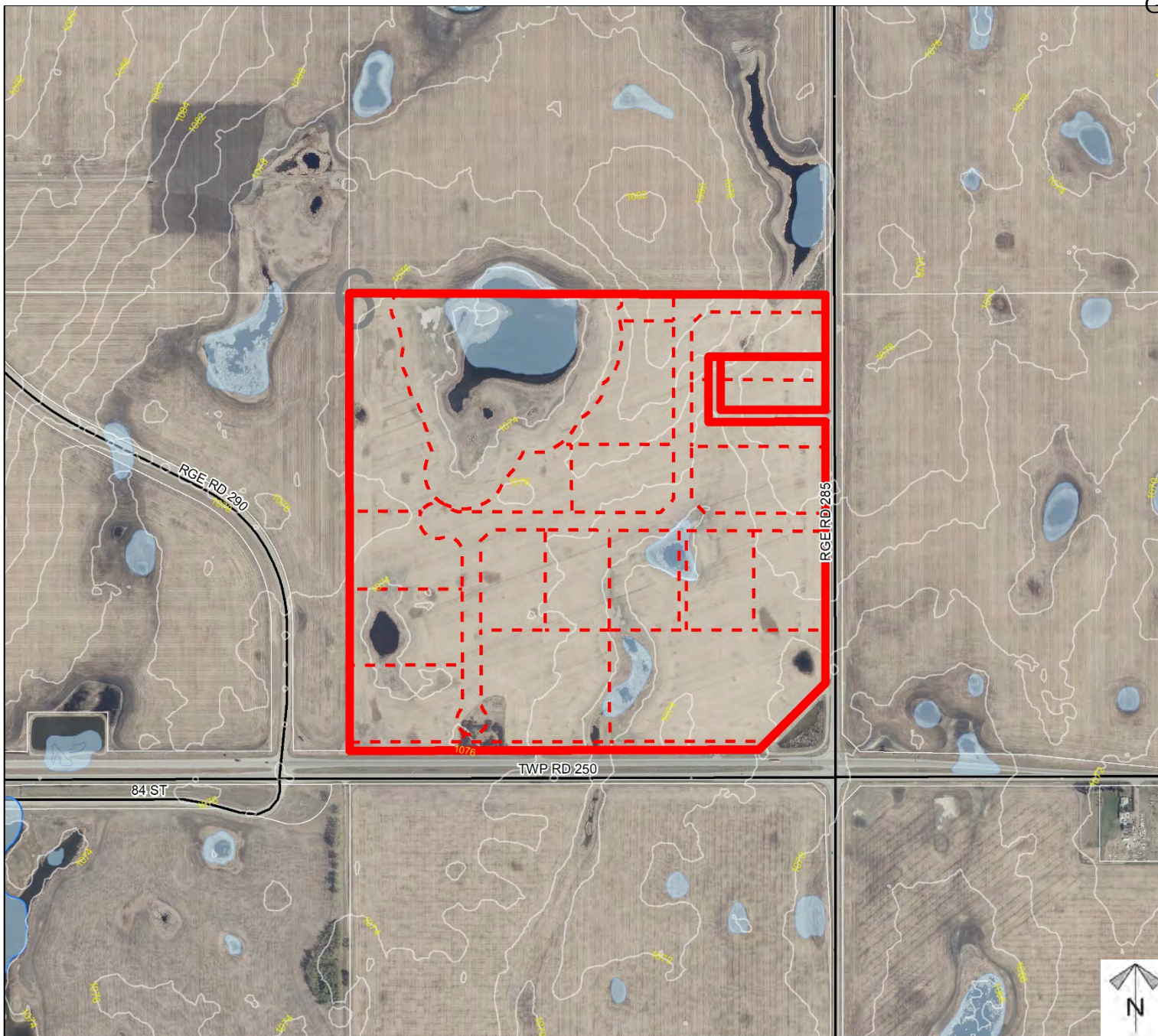




## Environmental

### Conceptual Scheme Proposal

To adopt the Bridge Industrial Park Conceptual Scheme that provides a policy framework to guide future redesignation and subdivision applications for a full-served industrial park.



-  Subject Lands
-  Contour - 2 meters
-  Riparian Setbacks
-  Alberta Wetland Inventory
-  Surface Water



Division: 5  
 Roll: 05306005 / 05306001  
 File: PL20200150  
 Legal: SE-06-25-28-W04M

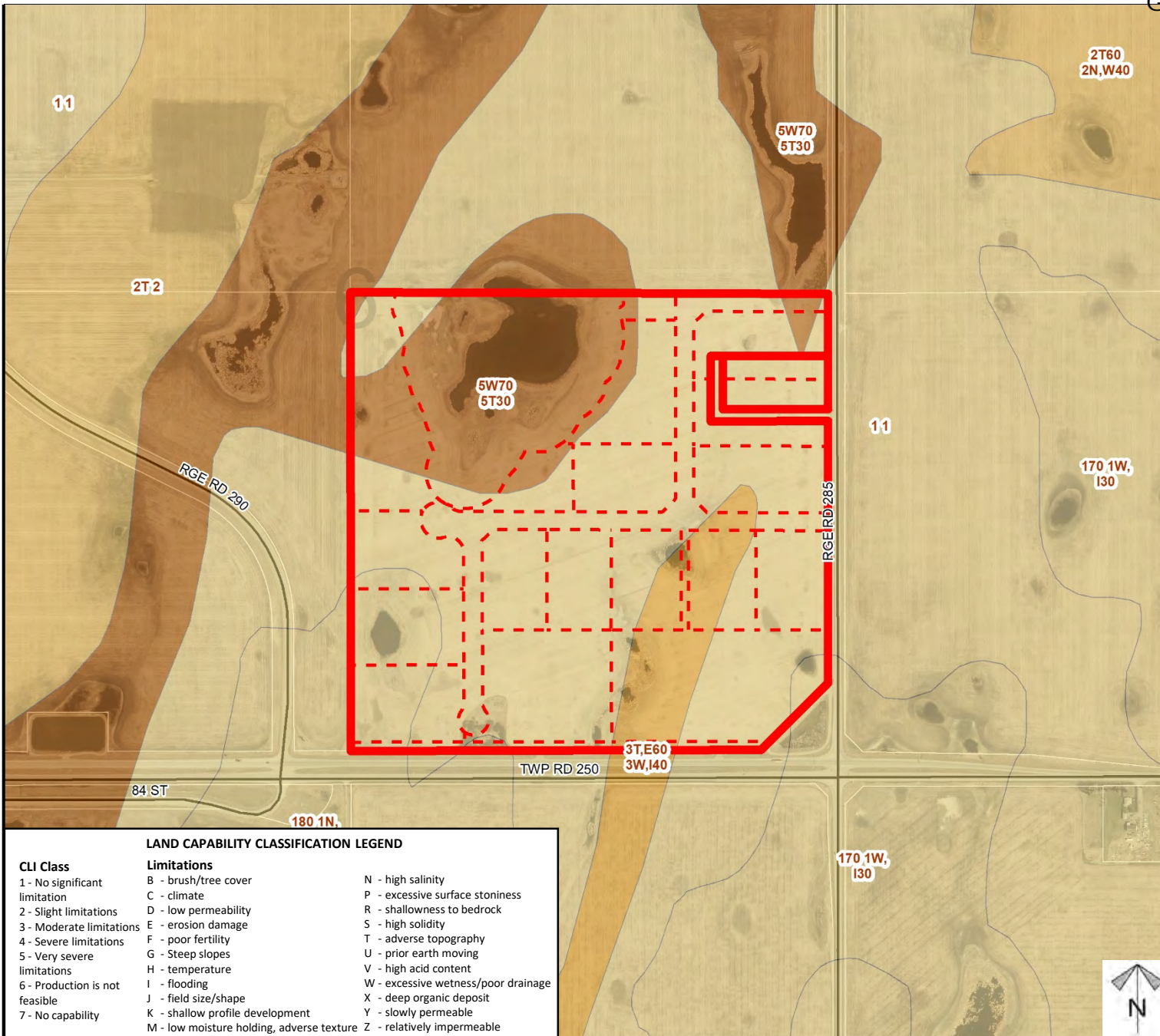
Printed: November 5, 2020



# Soil Classifications

## Conceptual Scheme Proposal

To adopt the Bridge Industrial Park Conceptual Scheme that provides a policy framework to guide future redesignation and subdivision applications for a full-served industrial park.



**LAND CAPABILITY CLASSIFICATION LEGEND**

CLI Class	Limitations	
1 - No significant limitation	B - brush/tree cover	N - high salinity
2 - Slight limitations	C - climate	P - excessive surface stoniness
3 - Moderate limitations	D - low permeability	R - shallowness to bedrock
4 - Severe limitations	E - erosion damage	S - high solidity
5 - Very severe limitations	F - poor fertility	T - adverse topography
6 - Production is not feasible	G - Steep slopes	U - prior earth moving
7 - No capability	H - temperature	V - high acid content
	I - flooding	W - excessive wetness/poor drainage
	J - field size/shape	X - deep organic deposit
	K - shallow profile development	Y - slowly permeable
	M - low moisture holding, adverse texture	Z - relatively impermeable



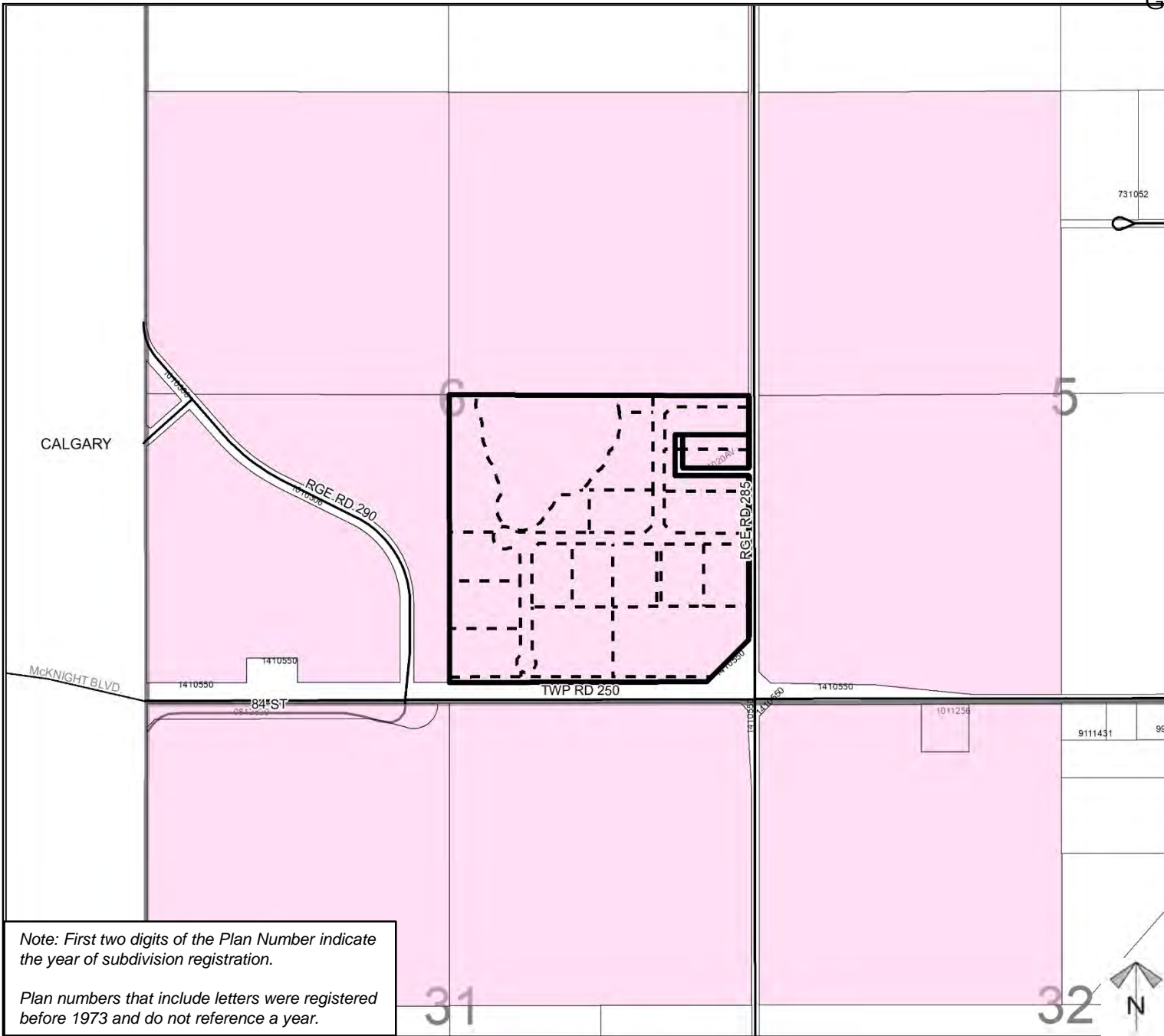
Division: 5  
 Roll: 05306005 / 05306001  
 File: PL20200150  
 Legal: SE-06-25-28-W04M

Printed: November 5, 2020

# Landowner Circulation Area

## Conceptual Scheme Proposal



To adopt the Bridge Industrial Park Conceptual Scheme that provides a policy framework to guide future redesignation and subdivision applications for a full-served industrial park.



Note: First two digits of the Plan Number indicate the year of subdivision registration.

Plan numbers that include letters were registered before 1973 and do not reference a year.

### Legend

- Support 
- Opposition 

Division: 5  
Roll: 05306005 / 05306001  
File: PL20200150  
Legal: SE-06-25-28-W04M

Printed: November 5, 2020