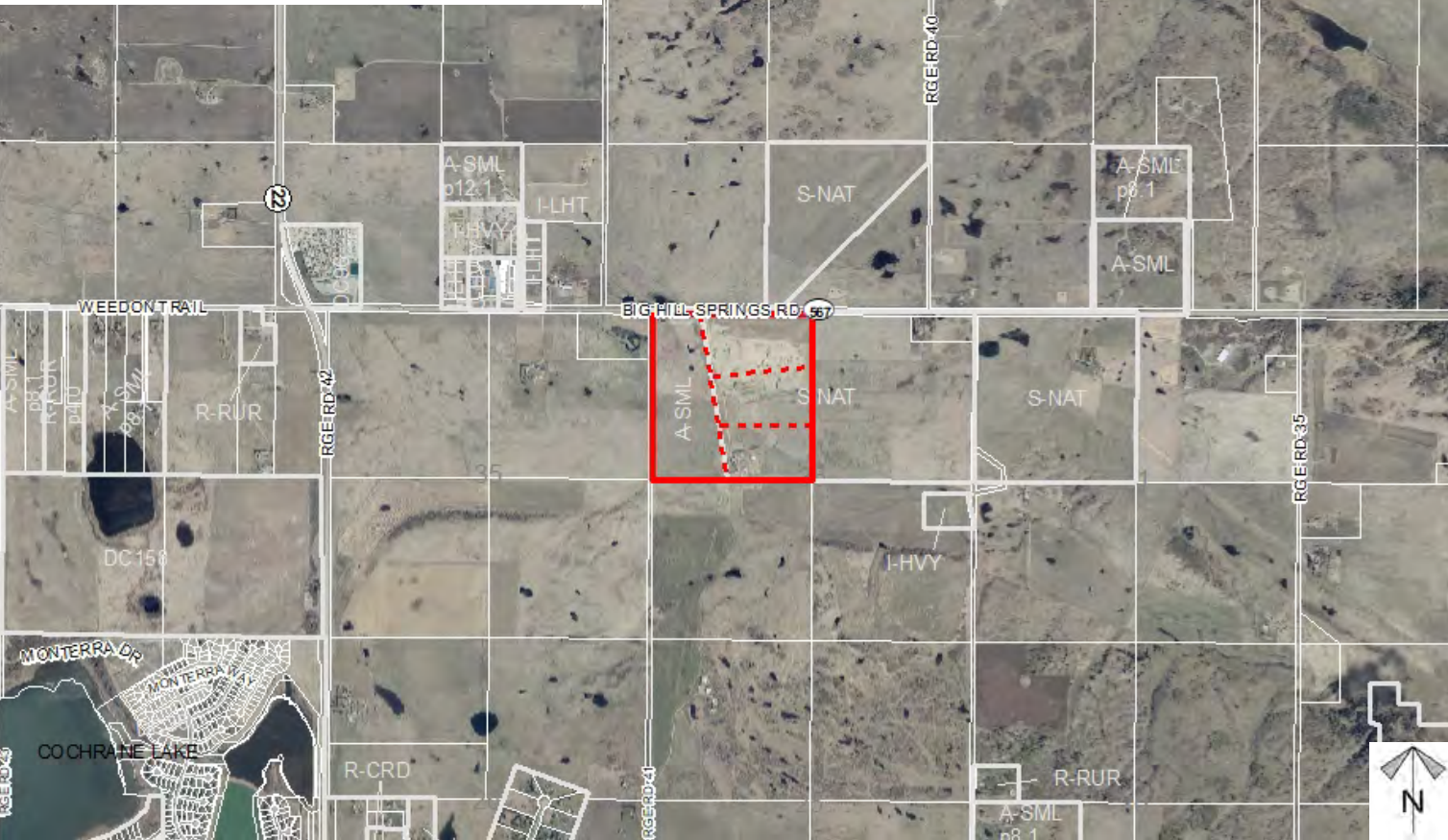
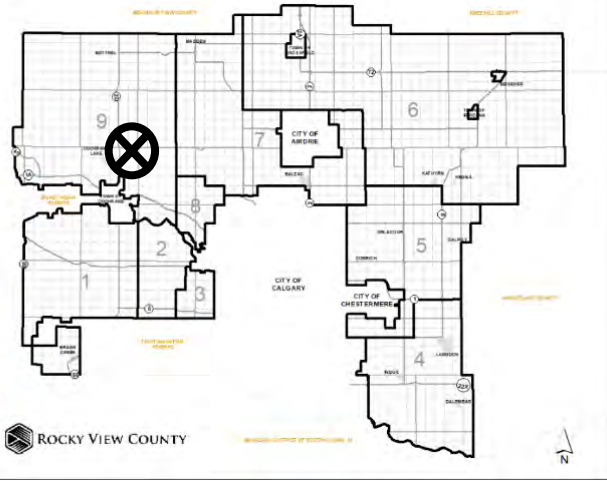


Location & Context

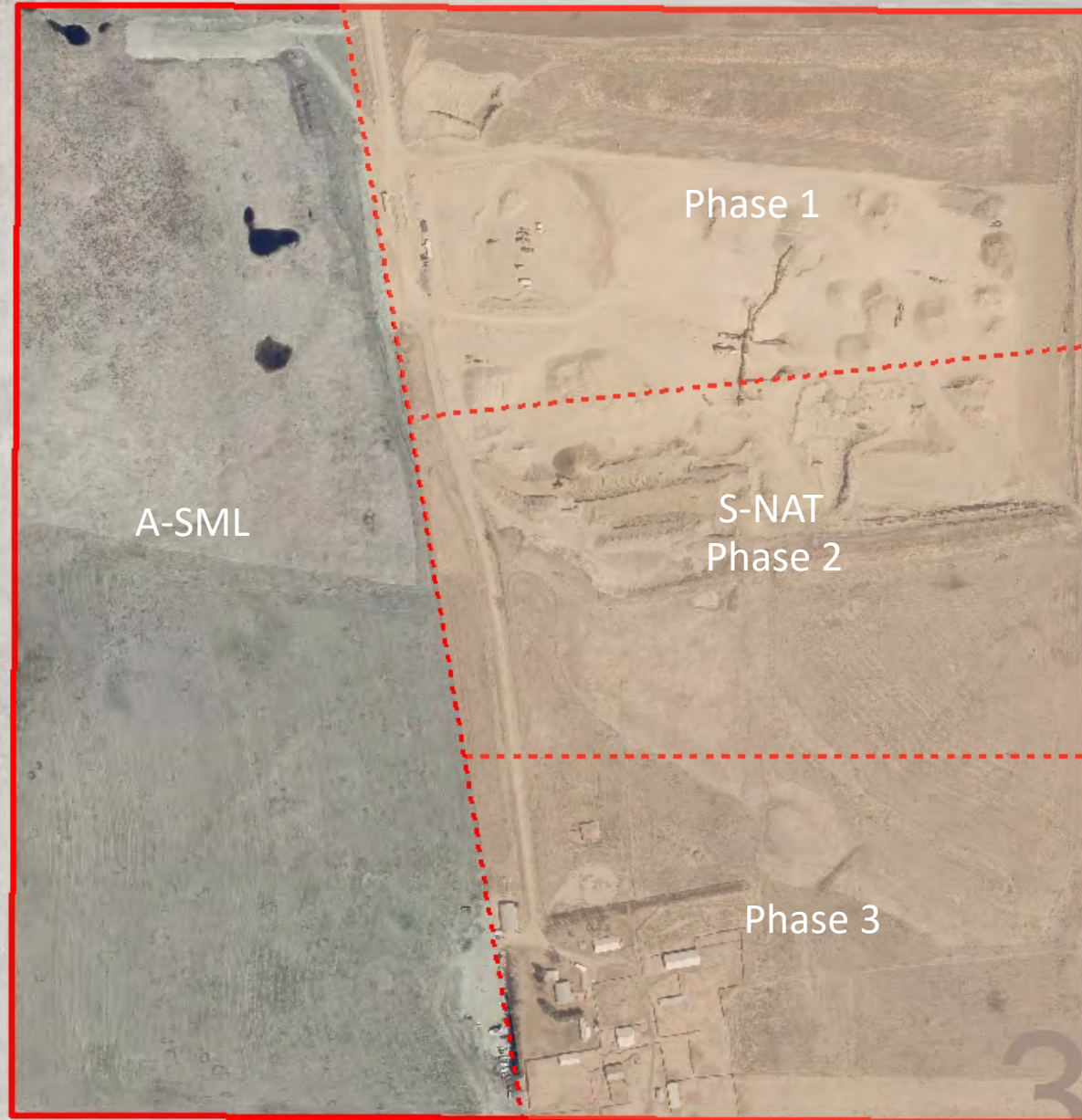
Hillstone Aggregates Master Site Development Plan (MSDP)

Amendments to existing MSDP to facilitate aggregate extraction and processing development in Phase 2 of site operations.



Division: 9
 Roll: 06836002
 File: PL20180105
 Printed: December 21, 2020
 Legal: NW-36-26-04-W05M

567 BIG HILL SPRINGS RD



Development Proposal

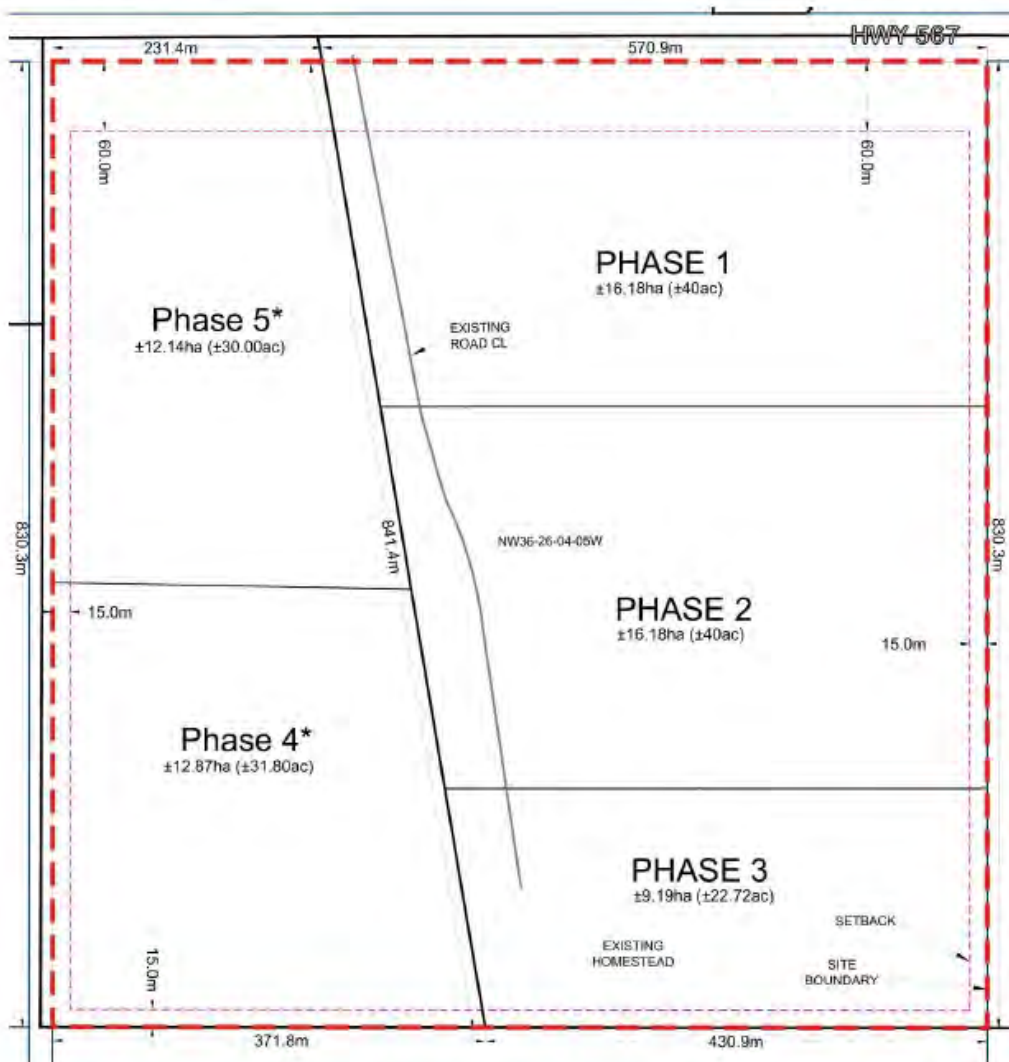
Hillstone Aggregates Master Site Development Plan (MSDP)

Amendments to existing MSDP to facilitate aggregate extraction and processing development in Phase 2 of site operations.

Division: 9
Roll: 06836002
File: PL20180105
Printed: December 21, 2020
Legal: NW-36-26-04-W05M



Figure 9 - Phasing Map



- - - Site Boundary
- Proposed Setbacks
- Property Lines
- Land Use Boundary

*Requiring subsequent land use approval



Hillstone Aggregates Master Site Development Plan (MSDP)

Amendments to existing MSDP to facilitate aggregate extraction and processing development in Phase 2 of site operations.

Division: 9
 Roll: 06836002
 File: PL20180105
 Printed: December 21, 2020
 Legal: NW-36-26-04-W05M

Environmental

Hillstone Aggregates Master Site Development Plan (MSDP)

Amendments to existing MSDP to facilitate aggregate extraction and processing development in Phase 2 of site operations.



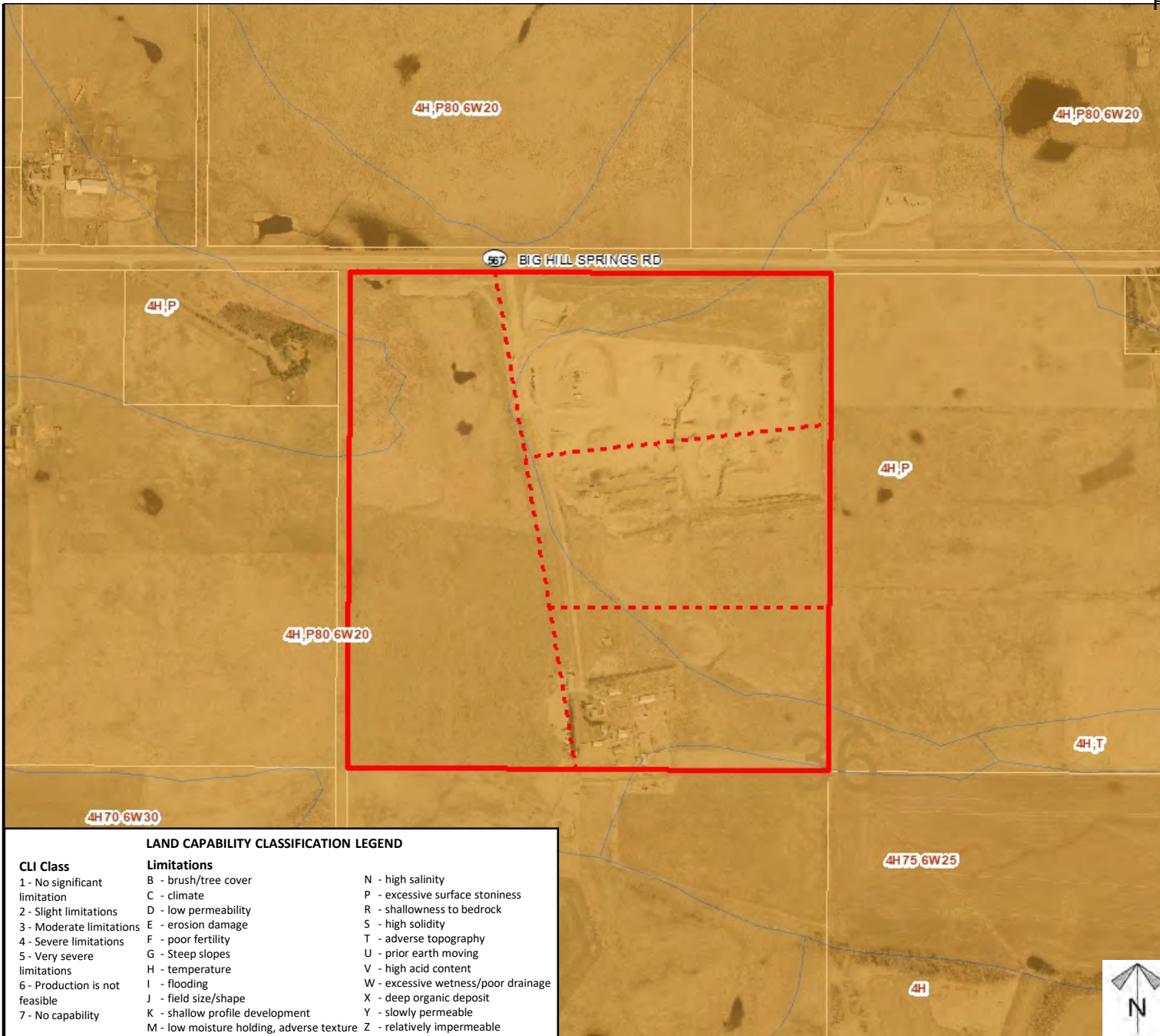
-  Subject Lands
-  Contour - 2 meters
-  Riparian Setbacks
-  Alberta Wetland Inventory
-  Surface Water

Division: 9
 Roll: 06836002
 File: PL20180105
 Printed: December 21, 2020
 Legal: NW-36-26-04-W05M

Soil Classifications

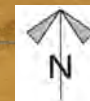
Hillstone Aggregates Master Site Development Plan (MSDP)

Amendments to existing MSDP to facilitate aggregate extraction and processing development in Phase 2 of site operations.



LAND CAPABILITY CLASSIFICATION LEGEND

CLI Class	Limitations	
1 - No significant limitation	B - brush/tree cover	N - high salinity
2 - Slight limitations	C - climate	P - excessive surface stoniness
3 - Moderate limitations	D - low permeability	R - shallowness to bedrock
4 - Severe limitations	E - erosion damage	S - high solidity
5 - Very severe limitations	F - poor fertility	T - adverse topography
	G - Steep slopes	U - prior earth moving
	H - temperature	V - high acid content
6 - Production is not feasible	I - flooding	W - excessive wetness/poor drainage
7 - No capability	J - field size/shape	X - deep organic deposit
	K - shallow profile development	Y - slowly permeable
	M - low moisture holding, adverse texture	Z - relatively impermeable

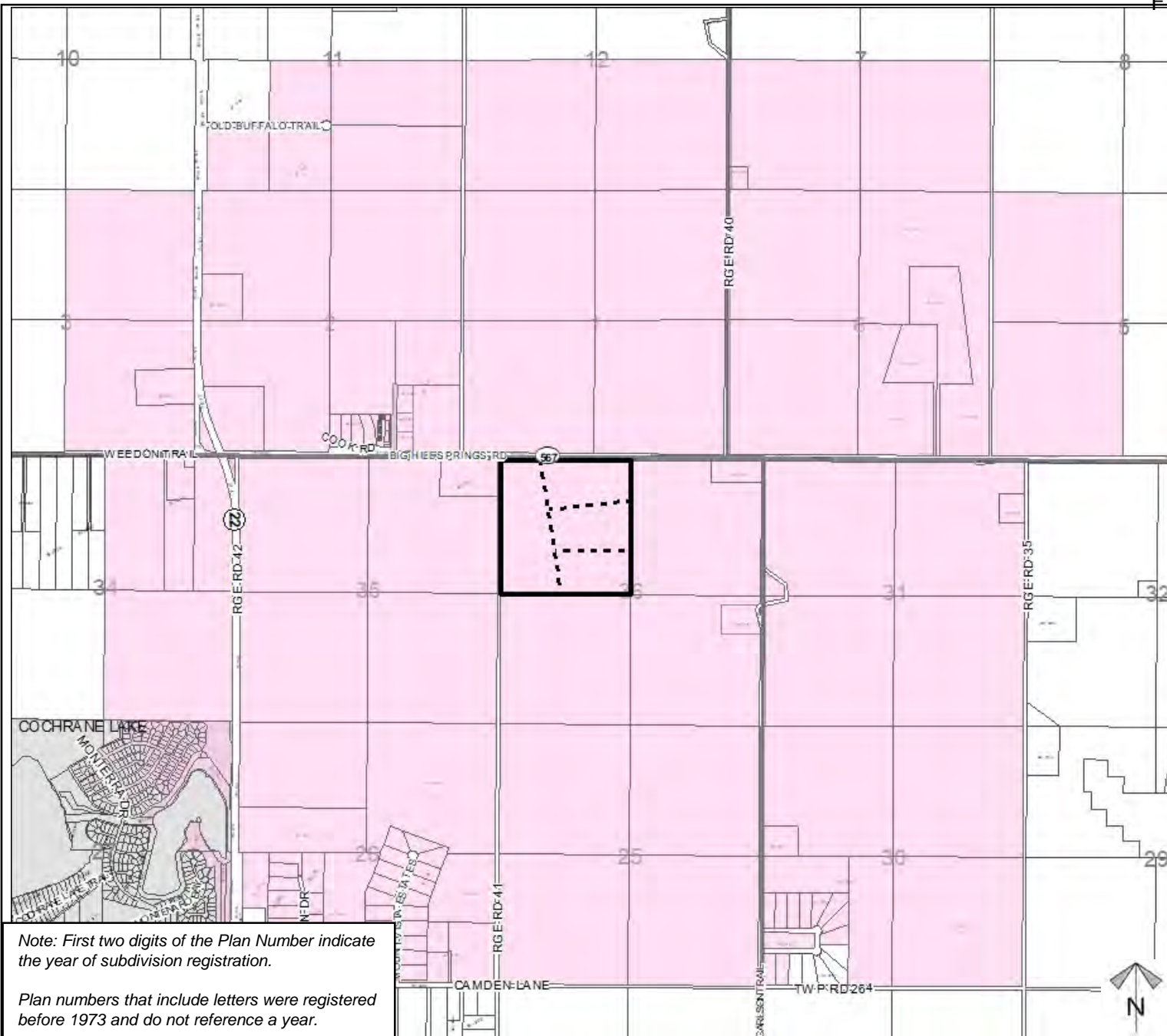


Division: 9
 Roll: 06836002
 File: PL20180105
 Printed: December 21, 2020
 Legal: NW-36-26-04-W05M


Landowner Circulation Area

Hillstone Aggregates Master Site Development Plan (MSDP)

Amendments to existing MSDP to facilitate aggregate extraction and processing development in Phase 2 of site operations.



Legend

- Support 
- Opposition 

Note: First two digits of the Plan Number indicate the year of subdivision registration.

Plan numbers that include letters were registered before 1973 and do not reference a year.

Division: 9
 Roll: 06836002
 File: PL20180105
 Printed: December 21, 2020
 Legal: NW-36-26-04-W05M