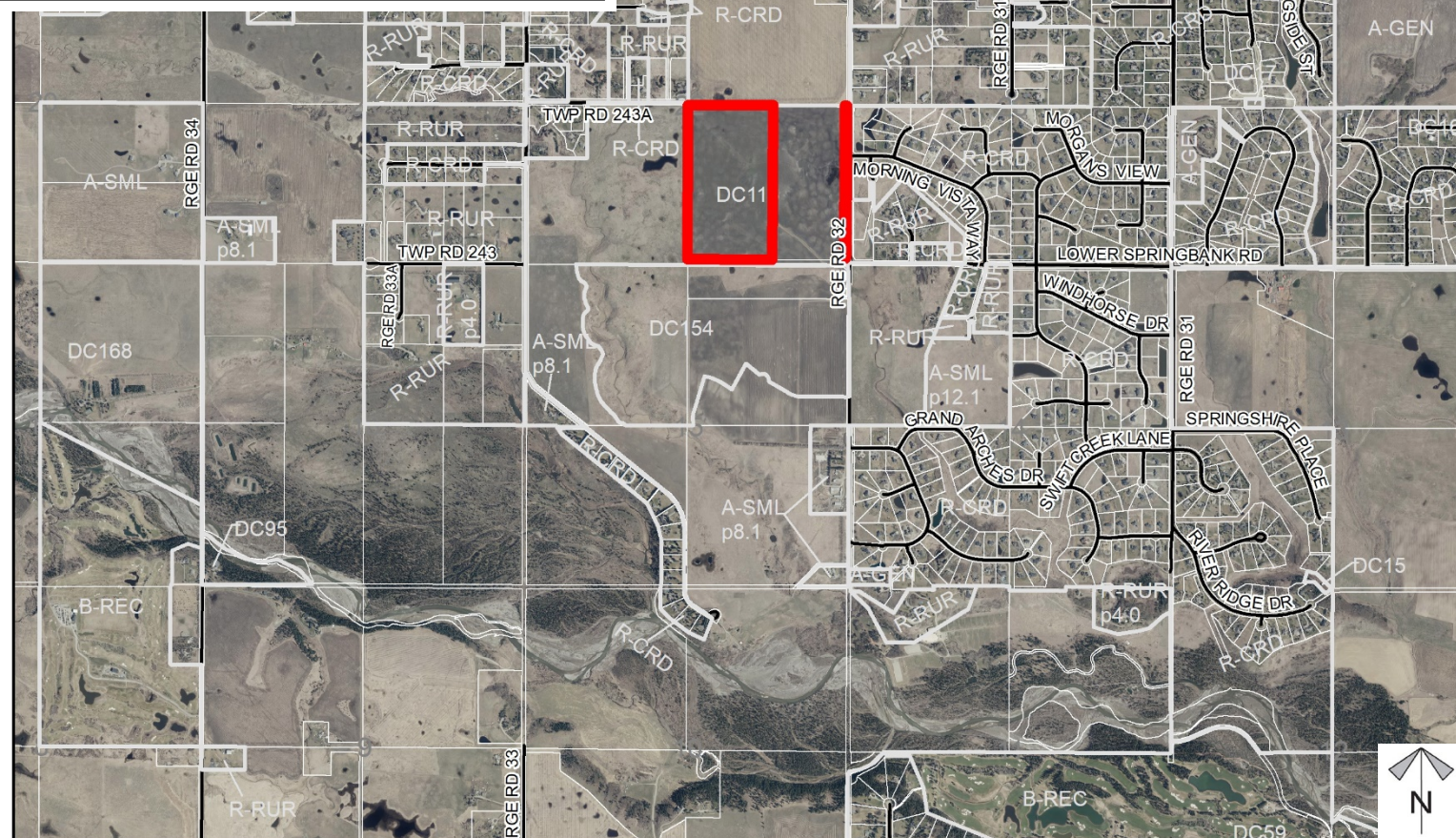
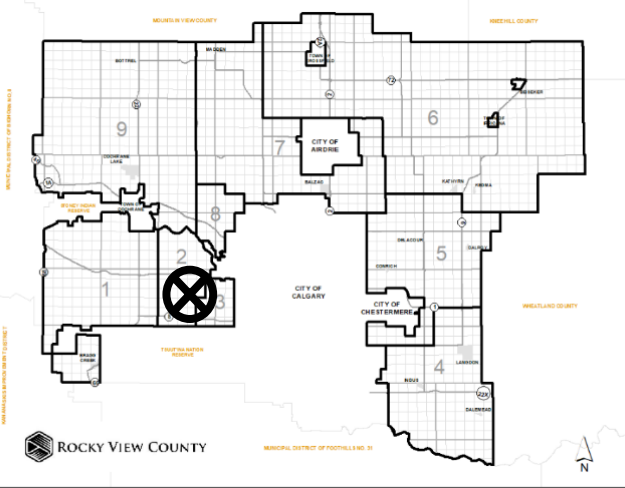


Location & Context



Division: 2
 Roll: 04722001
 File: PL20200105-130
 Printed: Sept 21, 2020
 Legal: A portion of SE-22-24-3-W5M

Conceptual Scheme Amendment Proposal:

To amend the Springbank Creek Conceptual Scheme to allow for the development of a private school and associated recreational facilities.



Division: 2
 Roll: 04722001
 File: PL20200105-130
 Printed: Sept 21, 2020
 Legal: A portion of SE-22-24-3-W5M

**Development
Proposal:**

To amend Direct
Control District 116
to allow for the
development of a
private school and
associated
recreational
facilities.

± 33.83 ha
(± 83.60 ac)
DC 116 → DC 116 (Amended)

RGE RD 32

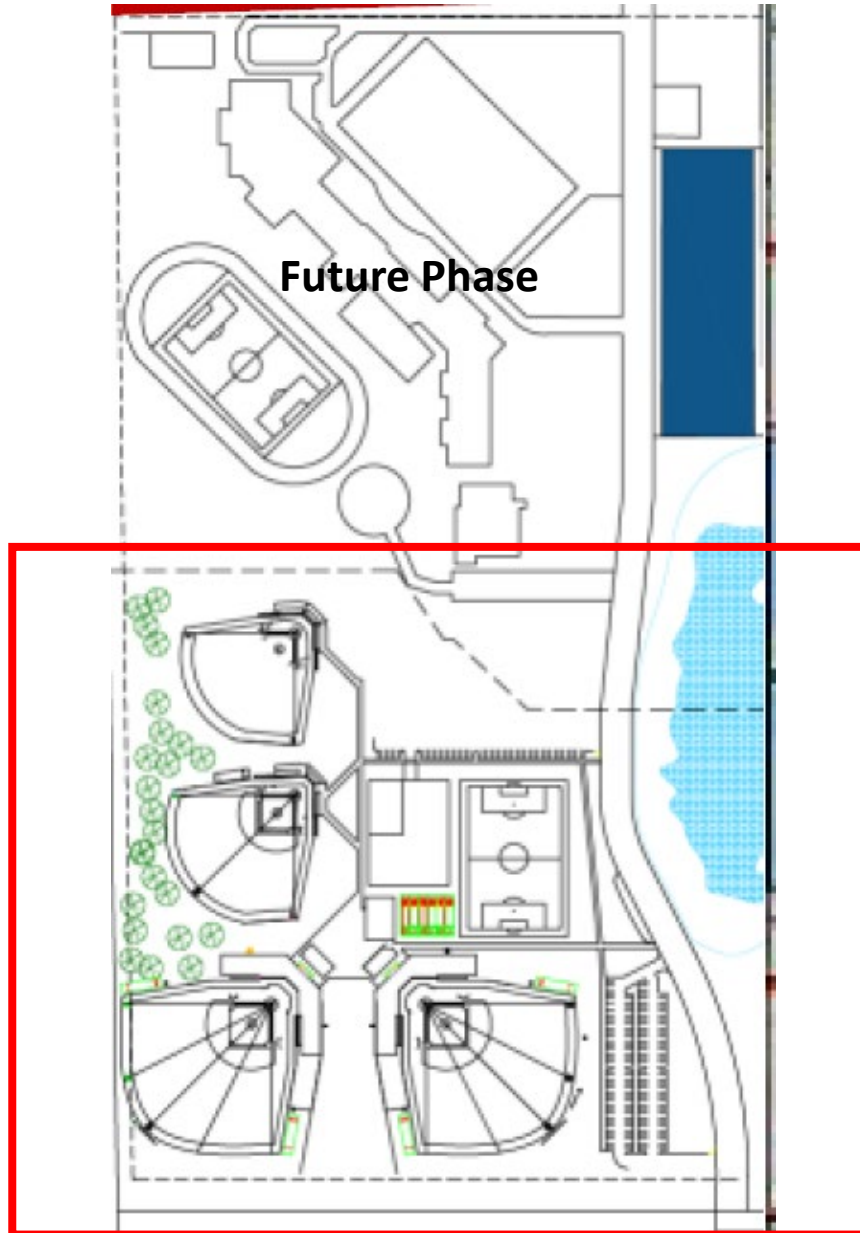


Division: 2
Roll: 04722001
File: PL20200105-130
Printed: Sept 21, 2020
Legal: A portion of SE-22-24-3-W5M

**Associated DP
Proposal:**

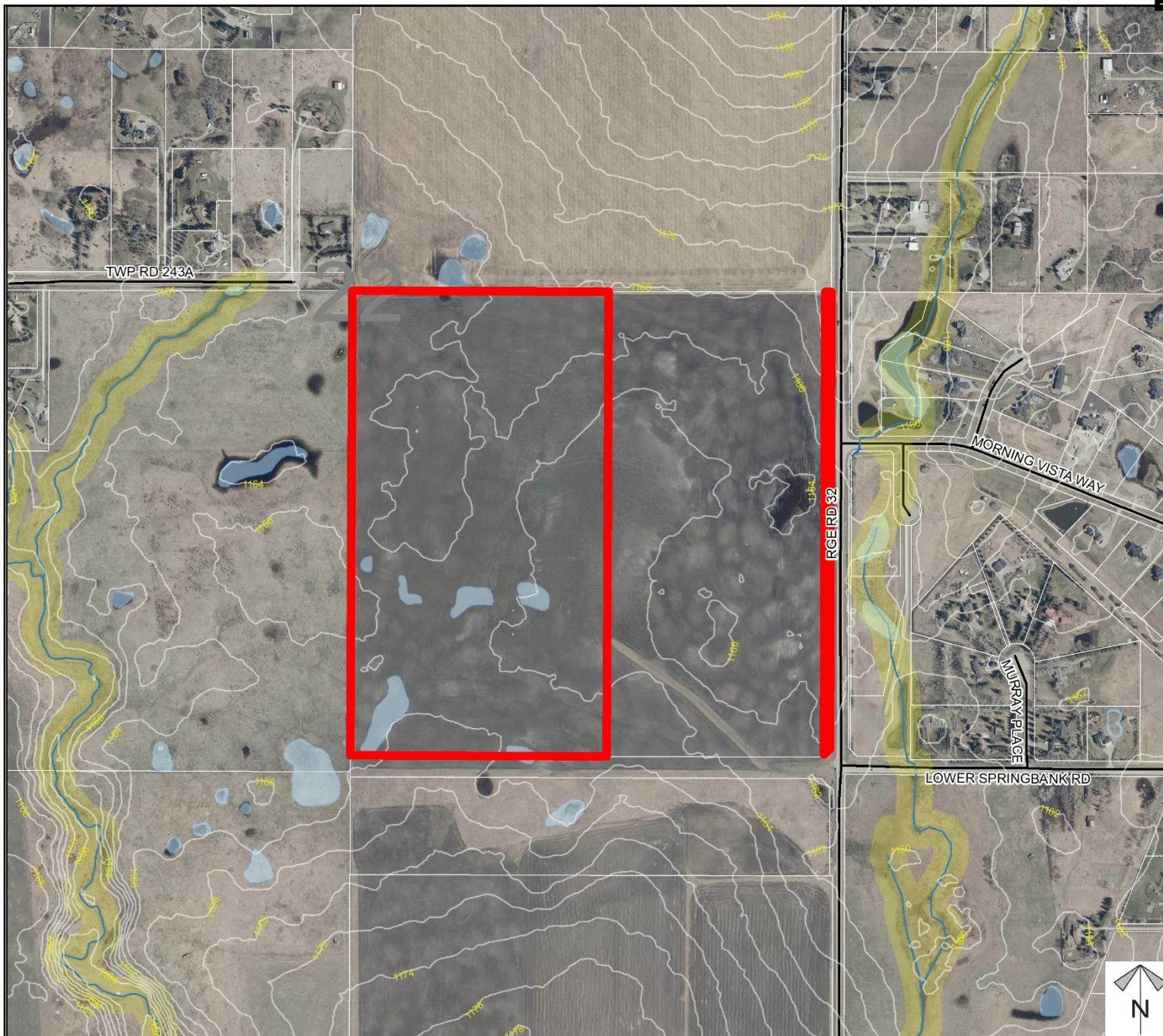
To amend the
Springbank Creek
Conceptual
Scheme and
Direct Control
District 116 to
allow for the
development of a
private school and
associated
recreational
facilities.

Phase 1





Environmental

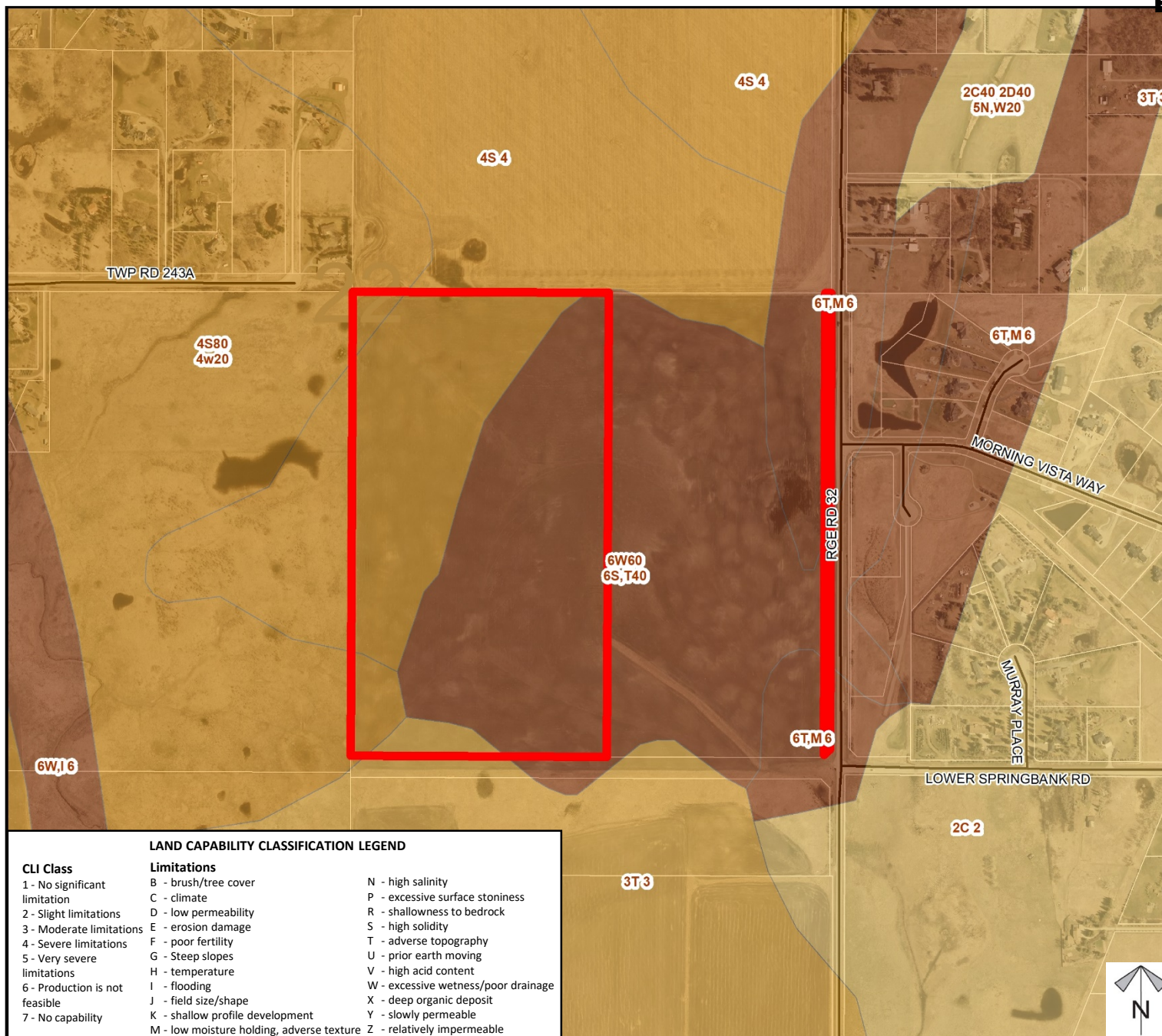


- Subject Lands
- Contour - 2 meters
- Riparian Setbacks
- Alberta Wetland Inventory
- Surface Water

Division: 2
 Roll: 04722001
 File: PL20200105-130
 Printed: Sept 21, 2020
 Legal: A portion of SE-22-24-3-W5M



Soil Classifications



LAND CAPABILITY CLASSIFICATION LEGEND

CLI Class

- 1 - No significant limitation
- 2 - Slight limitations
- 3 - Moderate limitations
- 4 - Severe limitations
- 5 - Very severe limitations
- 6 - Production is not feasible
- 7 - No capability

Limitations

- B - brush/tree cover
- C - climate
- D - low permeability
- E - erosion damage
- F - poor fertility
- G - Steep slopes
- H - temperature
- I - flooding
- J - field size/shape
- K - shallow profile development
- M - low moisture holding, adverse texture
- N - high salinity
- P - excessive surface stoniness
- R - shallowness to bedrock
- S - high solidity
- T - adverse topography
- U - prior earth moving
- V - high acid content
- W - excessive wetness/poor drainage
- X - deep organic deposit
- Y - slowly permeable
- Z - relatively impermeable

Division: 2

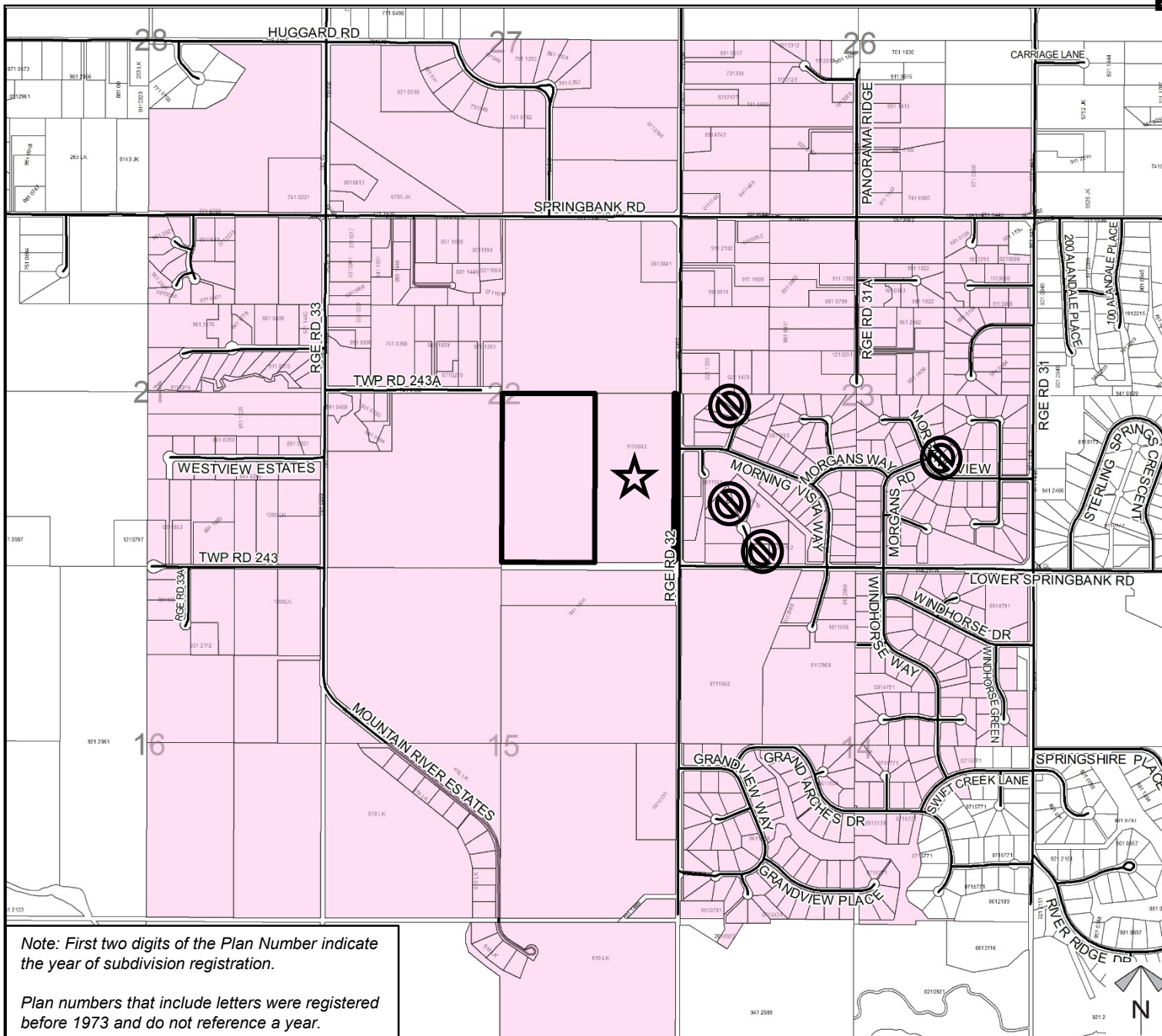
Roll: 04722001

File: PL20200105-130

Printed: Sept 21, 2020

Legal: A portion of SE-22-24-3-W5M

Landowner Circulation Area



Legend

Support



Opposition



Note: First two digits of the Plan Number indicate the year of subdivision registration.

Plan numbers that include letters were registered before 1973 and do not reference a year.

Division: 2
 Roll: 04722001
 File: PL20200105-130
 Printed: Sept 21, 2020
 Legal: A portion of SE-22-24-3-W5M