

Location & Context

To create a ±0.81 hectare (±2.00 acre) parcel with a ±0.81 hectare (±2.00 acre) remainder.

Division: 5
Roll: 06516016
File: PL20240152
Printed: 8/20/2024
Legal: A portion of
NE-16-26-01-W05M



CALTERRA ESTATES DR

Lot 2
±0.81 ha
(±2.00 ac)

Lot 1
±0.81 ha
(±2.00 ac)

Development Proposal

To create a ±0.81 hectare (±2.00 acre) parcel with a ±0.81 hectare (±2.00 acre) remainder.

Division: 5
Roll: 06516016
File: PL20240152
Printed: 8/26/2024
Legal: A portion of
NE-16-26-01-W05M



Environmental

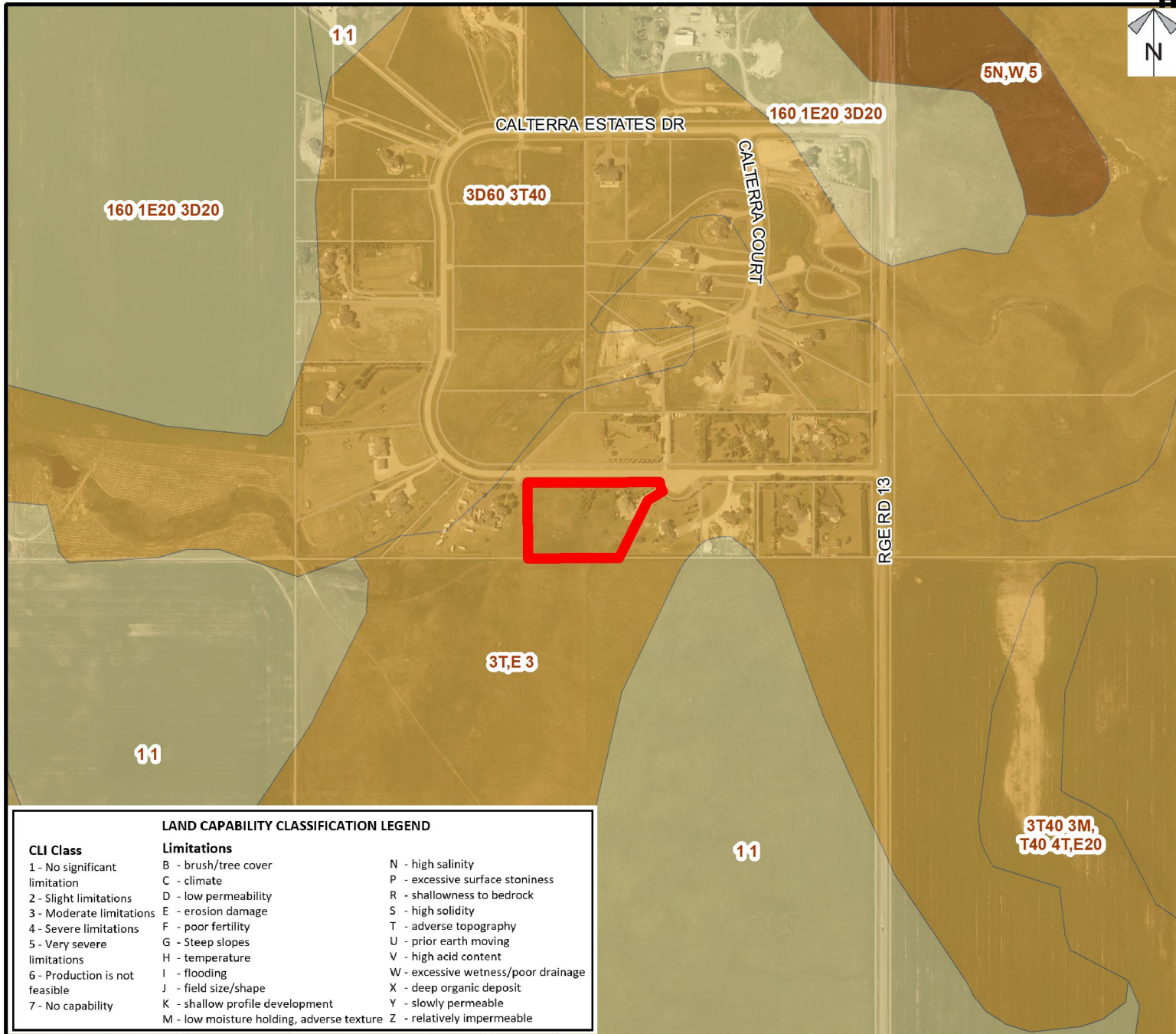
To create a ±0.81 hectare (±2.00 acre) parcel with a ±0.81 hectare (±2.00 acre) remainder.



Legend

- Subject Lands
- Contour - 2 meters
- Riparian Setbacks
- Alberta Wetland Inventory
- Surface Water

Division: 5
Roll: 06516016
File: PL20240152
Printed: 8/20/2024
Legal: A portion of
NE-16-26-01-W05M



Soil Classifications

To create a ±0.81 hectare (±2.00 acre) parcel with a ±0.81 hectare (±2.00 acre) remainder.

LAND CAPABILITY CLASSIFICATION LEGEND		
CLI Class	Limitations	
1 - No significant limitation	B - brush/tree cover	N - high salinity
2 - Slight limitations	C - climate	P - excessive surface stoniness
3 - Moderate limitations	D - low permeability	R - shallowness to bedrock
4 - Severe limitations	E - erosion damage	S - high solidity
5 - Very severe limitations	F - poor fertility	T - adverse topography
6 - Production is not feasible	G - Steep slopes	U - prior earth moving
7 - No capability	H - temperature	V - high acid content
	I - flooding	W - excessive wetness/poor drainage
	J - field size/shape	X - deep organic deposit
	K - shallow profile development	Y - slowly permeable
	M - low moisture holding, adverse texture	Z - relatively impermeable

Division: 5
Roll: 06516016
File: PL20240152
Printed: 8/20/2024
Legal: A portion of NE-16-26-01-W05M



Landowner Circulation Area

To create a ±0.81
hectare (±2.00 acre)
parcel with a ±0.81
hectare (±2.00 acre)
remainder.

Legend

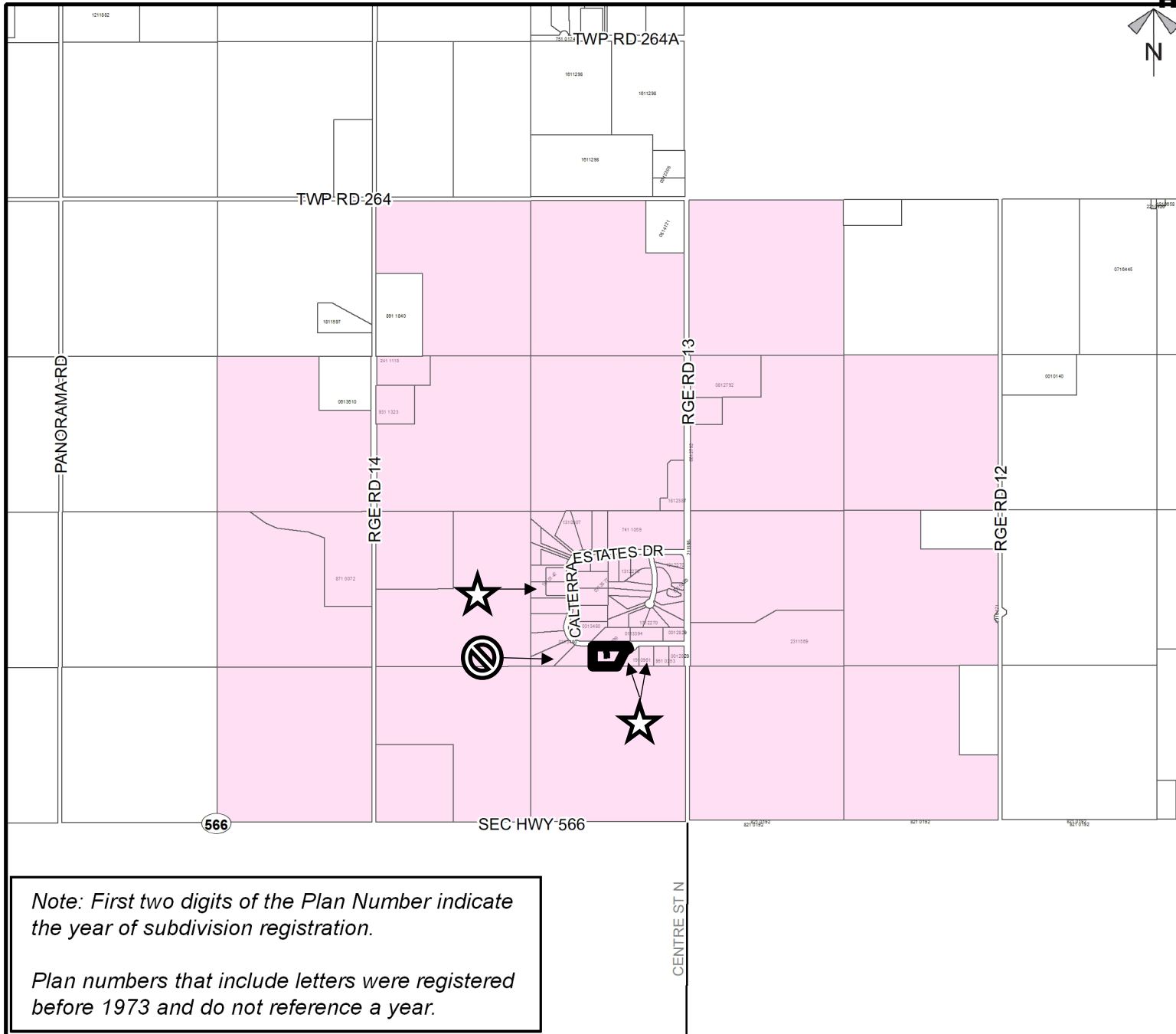
Support



Not Support



Division: 5
Roll: 06516016
File: PL20240152
Printed: 8/20/2024
Legal: A portion of
NE-16-26-01-W05M



Note: First two digits of the Plan Number indicate the year of subdivision registration.

Plan numbers that include letters were registered before 1973 and do not reference a year.