

### Location & Context

To redesignate the subject lands from Agriculture General District (A-GEN) to Agriculture, Small Parcel District (A-SML p8.1) to accommodate future subdivision.

Division: 4  
Roll: 07628005  
File: PL20240099  
Printed: 5/16/2024  
Legal: A portion of NE-28-27-02-W05M



### Development Proposal

To redesignate the subject lands from Agriculture General District (A-GEN) to Agriculture, Small Parcel District (A-SML p8.1) to accommodate future subdivision.





### Environmental

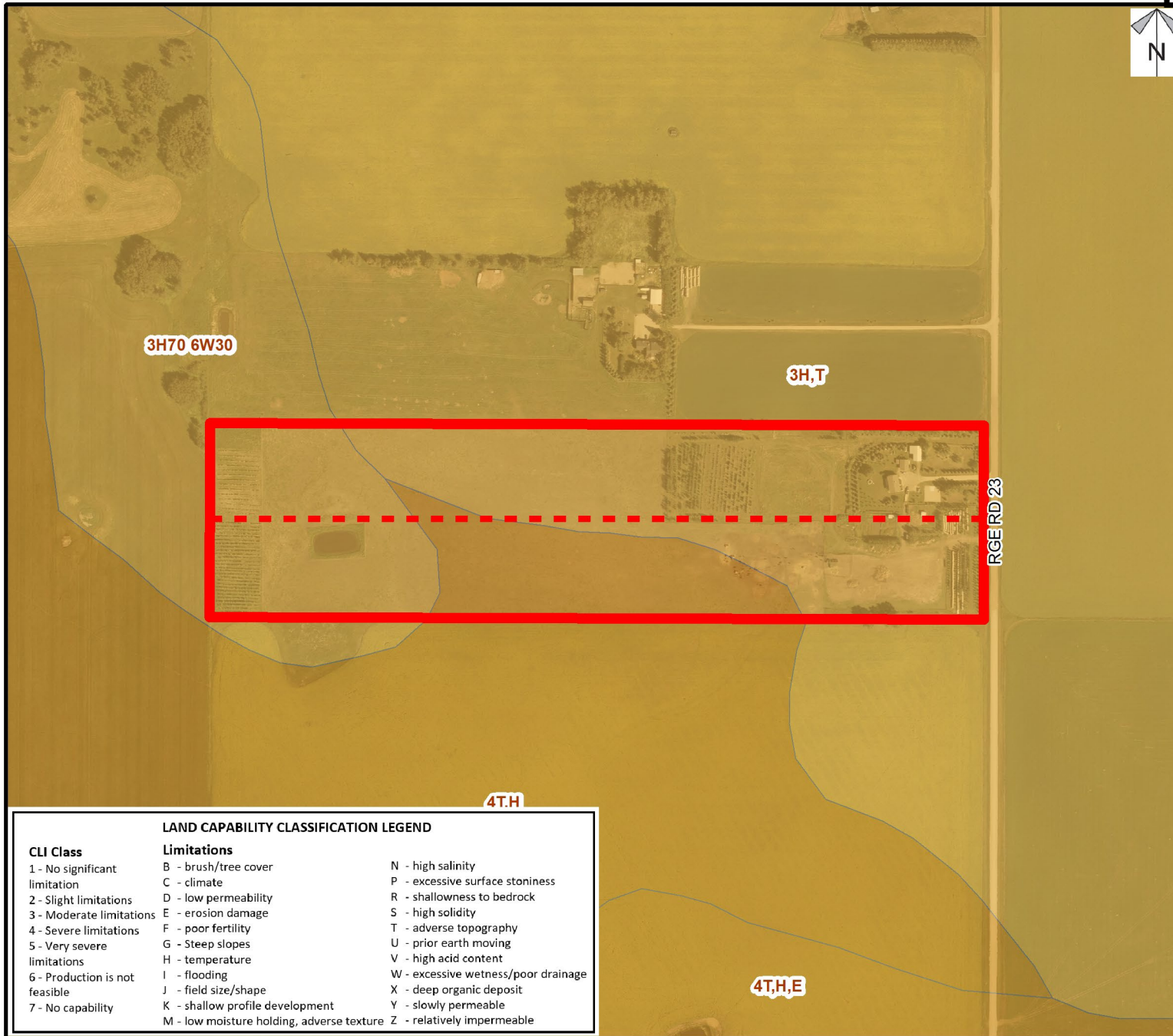
To redesignate the subject lands from Agriculture General District (A-GEN) to Agriculture, Small Parcel District (A-SML p8.1) to accommodate future subdivision.



#### Legend

- Subject Lands
- Contour - 2 meters
- Riparian Setbacks
- Alberta Wetland Inventory
- Surface Water

Division: 4  
Roll: 07628005  
File: PL20240099  
Printed: 5/16/2024  
Legal: A portion of NE-28-27-02-W05M



### Soil Classifications

To redesignate the subject lands from Agriculture General District (A-GEN) to Agriculture, Small Parcel District (A-SML p8.1) to accommodate future subdivision.

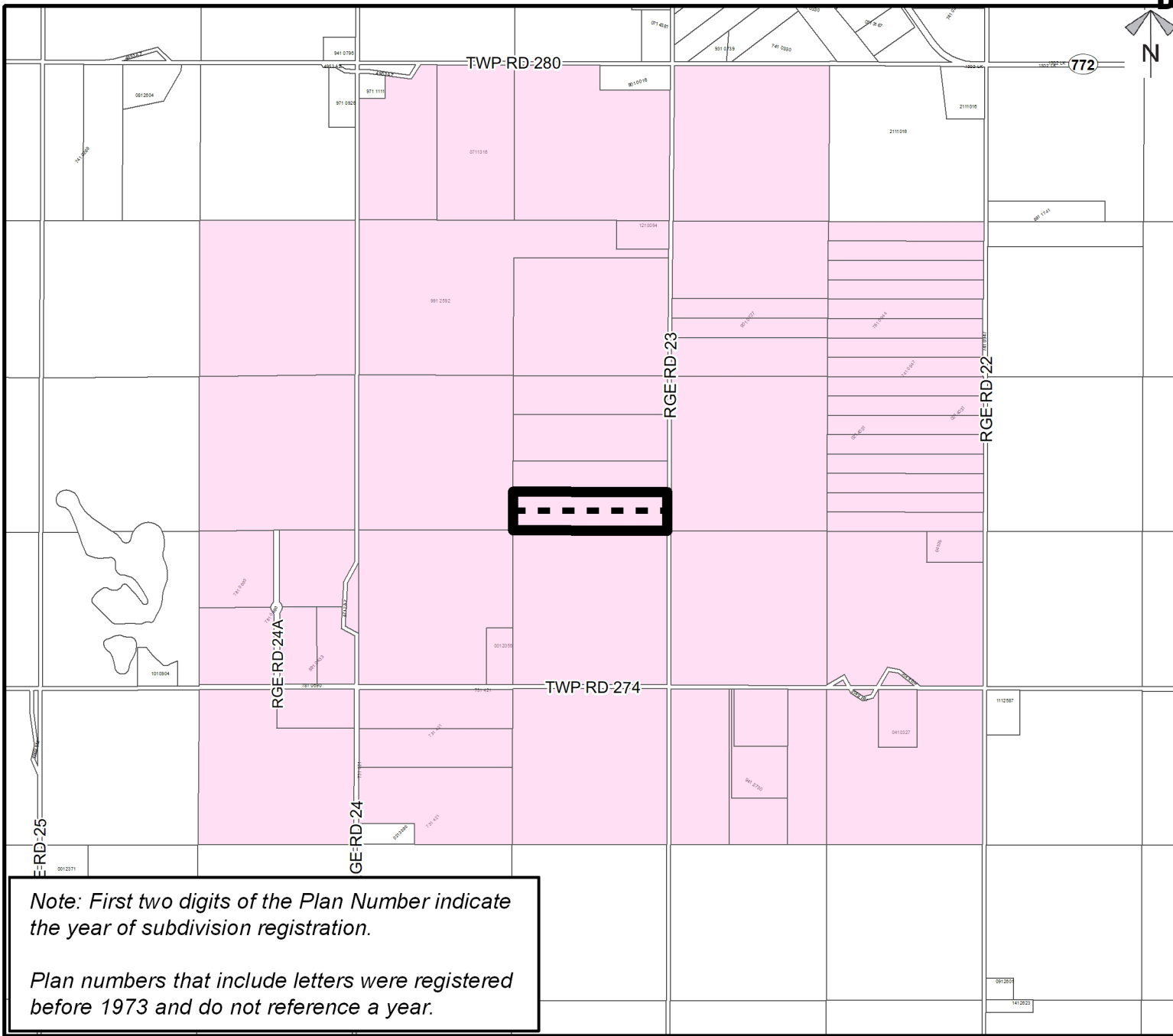
LAND CAPABILITY CLASSIFICATION LEGEND		
CLI Class	Limitations	
1 - No significant limitation	B - brush/tree cover	N - high salinity
2 - Slight limitations	C - climate	P - excessive surface stoniness
3 - Moderate limitations	D - low permeability	R - shallowness to bedrock
4 - Severe limitations	E - erosion damage	S - high solidity
5 - Very severe limitations	F - poor fertility	T - adverse topography
6 - Production is not feasible	G - Steep slopes	U - prior earth moving
7 - No capability	H - temperature	V - high acid content
	I - flooding	W - excessive wetness/poor drainage
	J - field size/shape	X - deep organic deposit
	K - shallow profile development	Y - slowly permeable
	M - low moisture holding, adverse texture	Z - relatively impermeable

Division: 4  
 Roll: 07628005  
 File: PL20240099  
 Printed: 5/16/2024  
 Legal: A portion of NE-28-27-02-W05M



### Landowner Circulation Area

To redesignate the subject lands from Agriculture General District (A-GEN) to Agriculture, Small Parcel District (A-SML p8.1) to accommodate future subdivision.



*Note: First two digits of the Plan Number indicate the year of subdivision registration.*

*Plan numbers that include letters were registered before 1973 and do not reference a year.*

**Legend**

Support



Not Support



Division: 4  
Roll: 07628005  
File: PL20240099  
Printed: 5/16/2024  
Legal: A portion of NE-28-27-02-W05M