

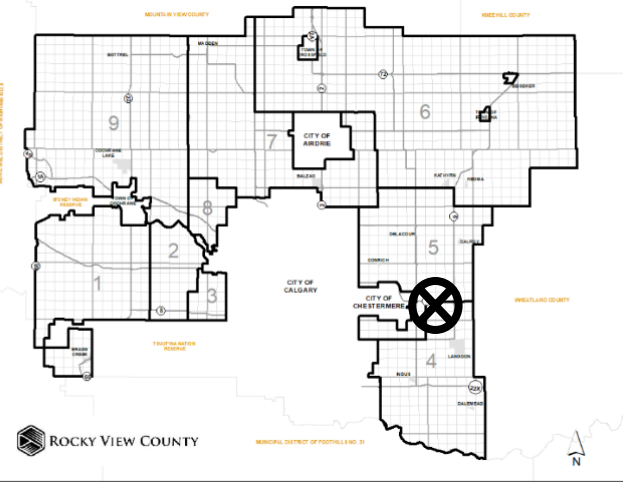
Location & Context

Redesignation Proposal

To redesignate the subject land from Agricultural, General District (A-GEN) to Special, Future Urban Development District (S-FUD), in order to accommodate temporary truck storage on 20 acre of the land.

Division: 4
 Roll: 04209001
 File: PL20200098
 Legal: A portion of SE-09-24-27-W04M

Printed: November 25, 2020





Development Proposal

Redesignation Proposal

To redesignate the subject land from Agricultural, General District (A-GEN) to Special, Future Urban Development District (S-FUD), in order to accommodate temporary truck storage on 20 acre of the land.

A-GEN → S-FUD
(± 128.04 acres)

VALE VIEW RD

WILLOW VIEW



Division: 4
Roll: 04209001
File: PL20200098
Legal: A portion of SE-09-24-
27-W04M

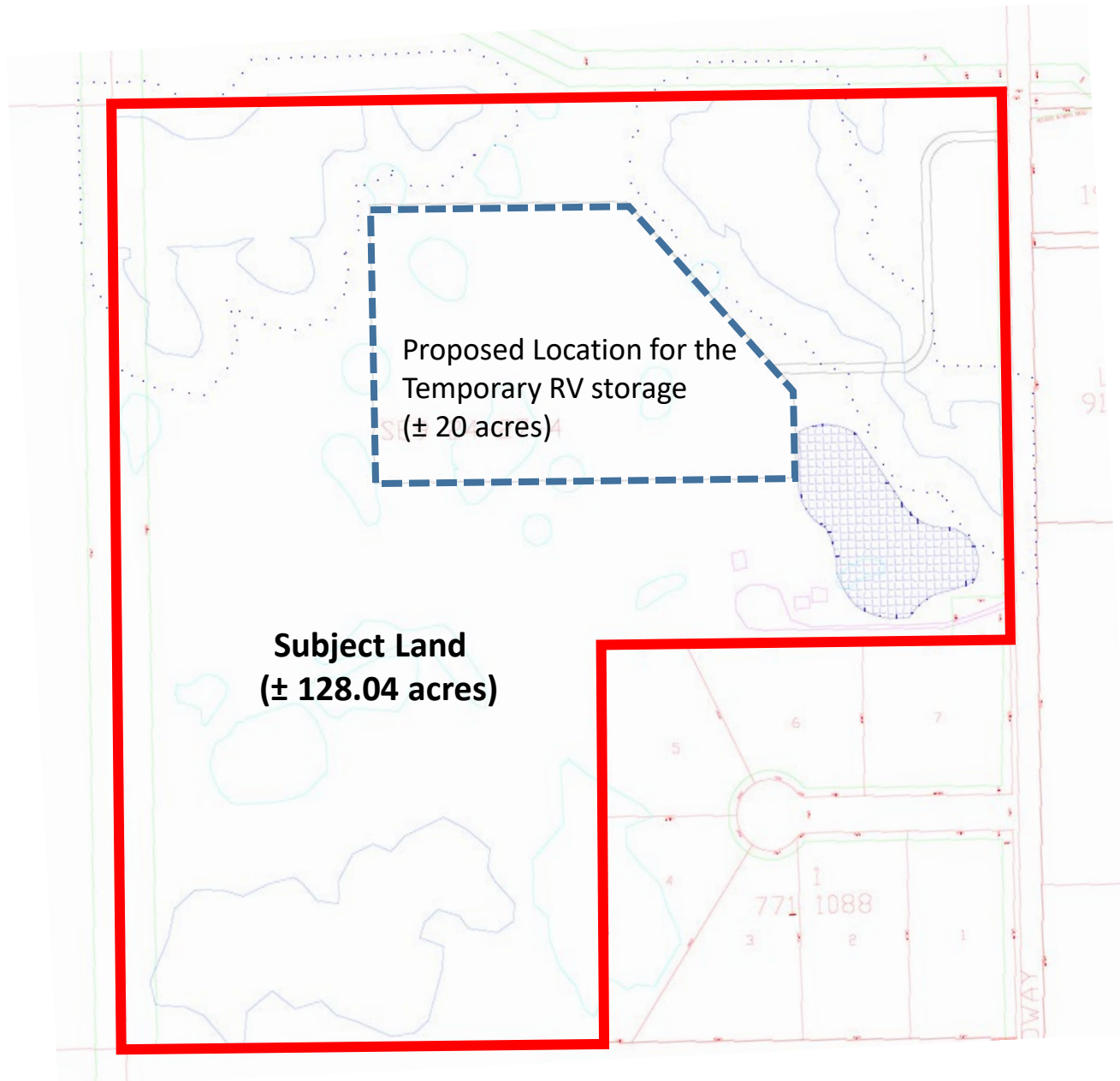
Printed: November 25, 2020



Site Plan

Redesignation Proposal

To redesignate the subject land from Agricultural, General District (A-GEN) to Special, Future Urban Development District (S-FUD), in order to accommodate temporary truck storage on 20 acre of the land.



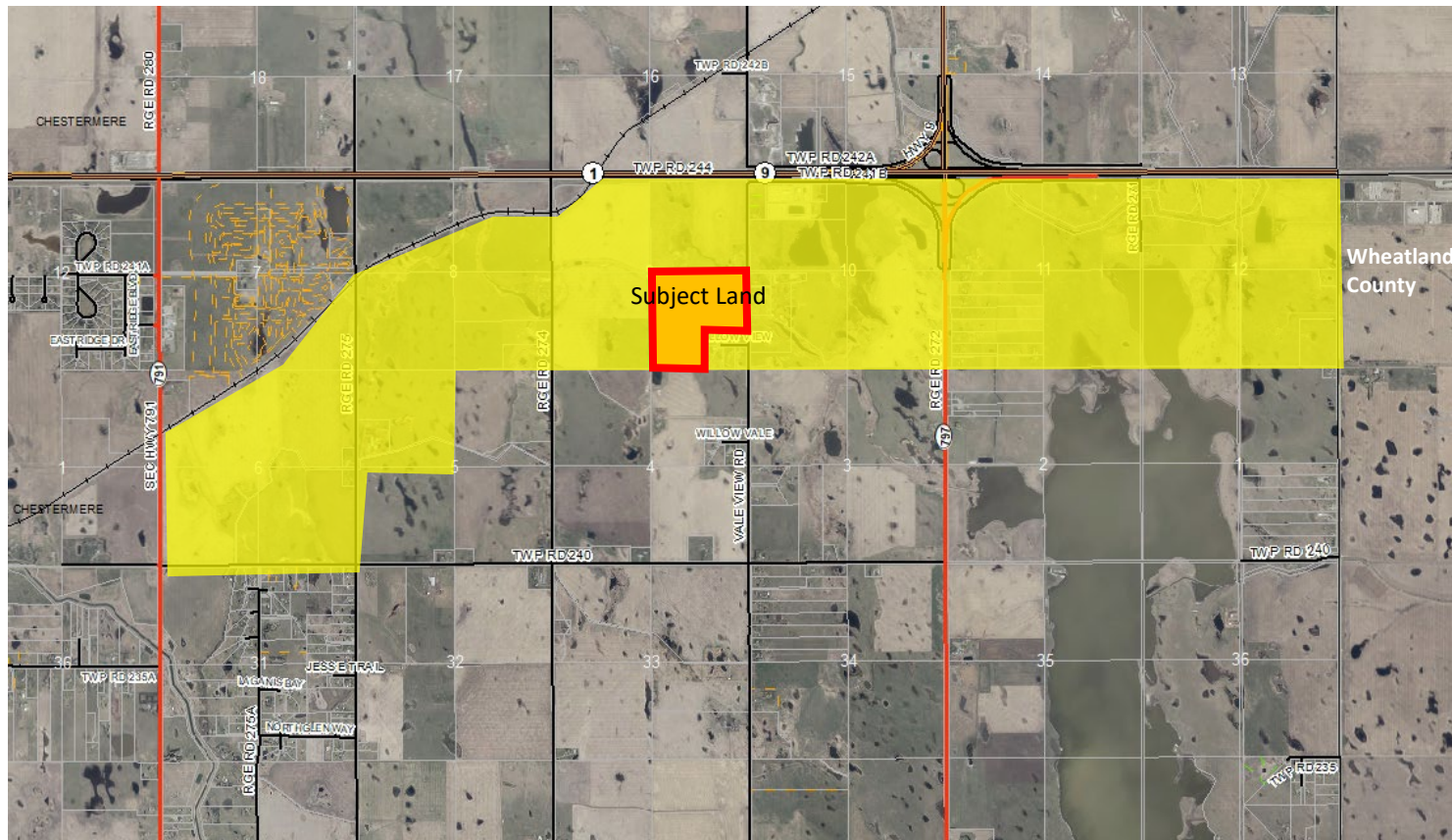
Division: 4
Roll: 04209001
File: PL20200098
Legal: A portion of SE-09-24-27-W04M

Printed: November 25, 2020

Redesignation Proposal

Division: 4
Roll: 04209001
File: PL20200098
Legal: A portion of SE-09-24-
27-W04M

Printed: November 25, 2020



Environmental

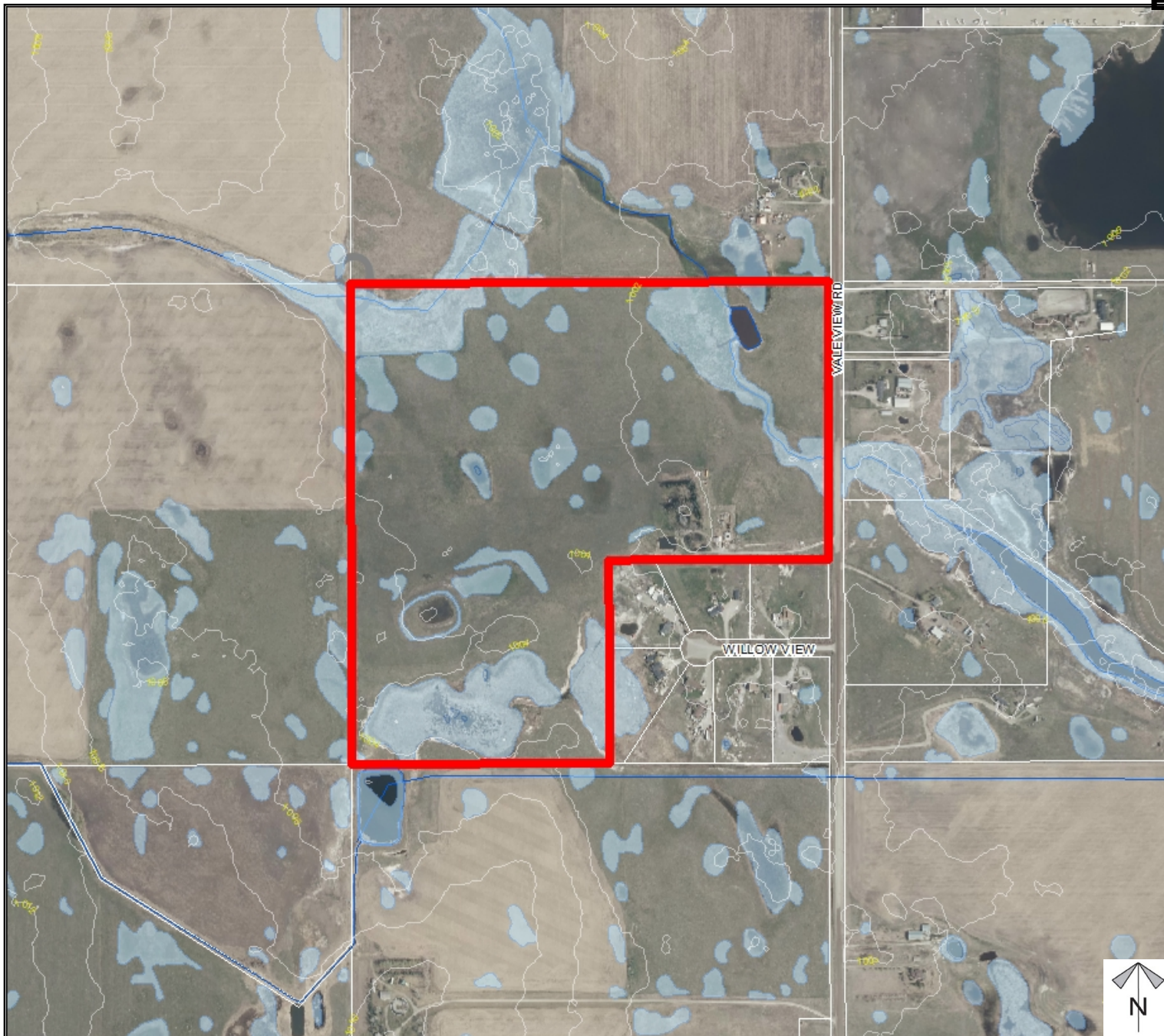
Redesignation Proposal

To redesignate the subject land from Agricultural, General District (A-GEN) to Special, Future Urban Development District (S-FUD), in order to accommodate temporary truck storage on 20 acre of the land.

-  Subject Lands
-  Contour - 2 meters
-  Riparian Setbacks
-  Alberta Wetland Inventory
-  Surface Water

Division: 4
 Roll: 04209001
 File: PL20200098
 Legal: A portion of SE-09-24-27-W04M

Printed: November 25, 2020

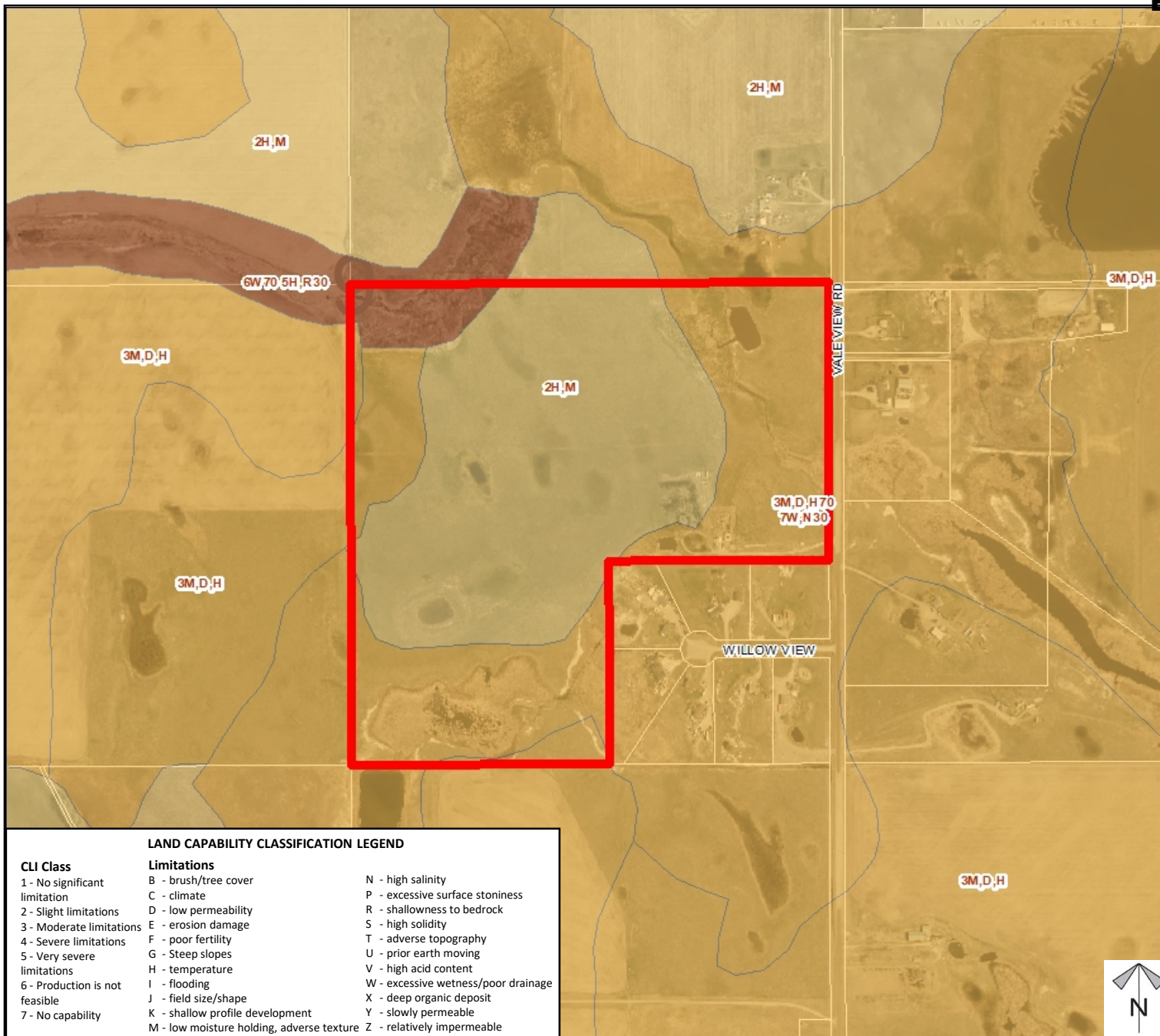




Soil Classifications

Redesignation Proposal

To redesignate the subject land from Agricultural, General District (A-GEN) to Special, Future Urban Development District (S-FUD), in order to accommodate temporary truck storage on 20 acre of the land.



LAND CAPABILITY CLASSIFICATION LEGEND

CLI Class	Limitations	
1 - No significant limitation	B - brush/tree cover	N - high salinity
2 - Slight limitations	C - climate	P - excessive surface stoniness
3 - Moderate limitations	D - low permeability	R - shallowness to bedrock
4 - Severe limitations	E - erosion damage	S - high solidity
5 - Very severe limitations	F - poor fertility	T - adverse topography
6 - Production is not feasible	G - Steep slopes	U - prior earth moving
7 - No capability	H - temperature	V - high acid content
	I - flooding	W - excessive wetness/poor drainage
	J - field size/shape	X - deep organic deposit
	K - shallow profile development	Y - slowly permeable
	M - low moisture holding, adverse texture	Z - relatively impermeable



Division: 4
Roll: 04209001
File: PL20200098
Legal: A portion of SE-09-24-27-W04M

Printed: November 25, 2020



Landowner Circulation Area

Redesignation Proposal

To redesignate the subject land from Agricultural, General District (A-GEN) to Special, Future Urban Development District (S-FUD), in order to accommodate temporary truck storage on 20 acre of the land.

Legend

Support

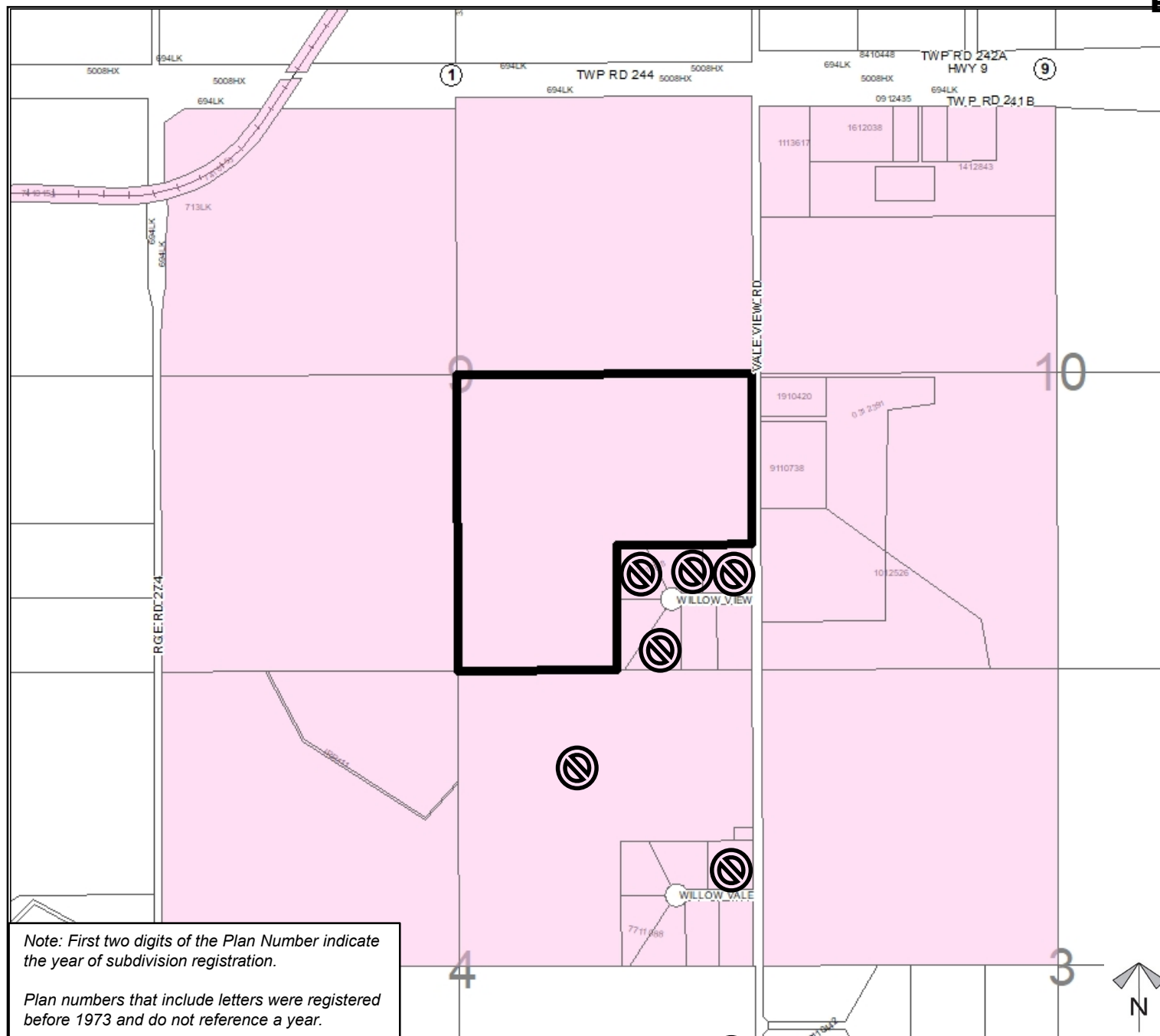


Opposition (7)



Note: First two digits of the Plan Number indicate the year of subdivision registration.

Plan numbers that include letters were registered before 1973 and do not reference a year.



Division: 4
Roll: 04209001
File: PL20200098
Legal: A portion of SE-09-24-27-W04M

Printed: November 25, 2020