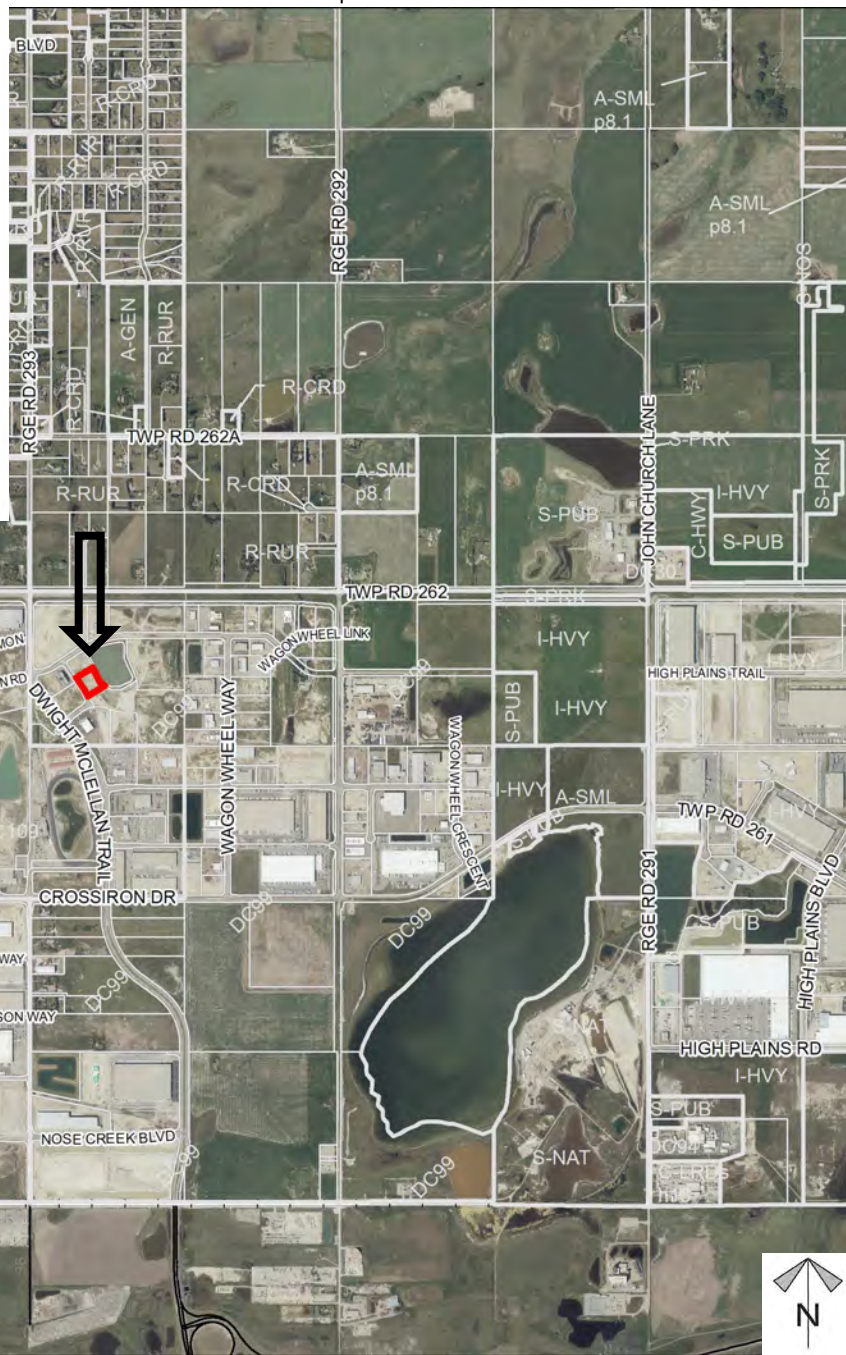
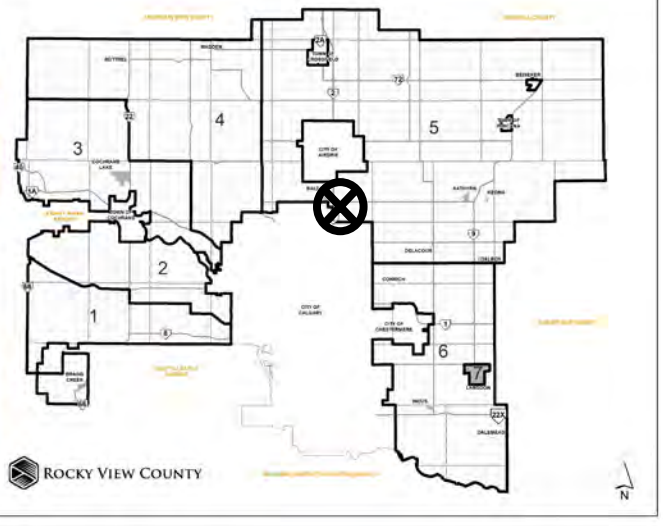


Location & Context

Redesignation Proposal

A site-specific amendment to Direct Control District 99 to allow reduced setback on the northern side yard to 3.00m from 10.00m; the rear yard setback to 3.00m from 10.00m; and the southern side yard to 1.00m from 10.00m.

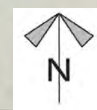


Division: 5
 Roll: 06410068
 File: PL20240004
 Printed: January 12, 2024
 Legal: A portion of NW-10-26-29-W04M

Development Proposal

Redesignation Proposal

A site-specific amendment to Direct Control District 99 to allow reduced setback on the northern side yard to 3.00m from 10.00m; the rear yard setback to 3.00m from 10.00m; and the southern side yard to 1.00m from 10.00m.

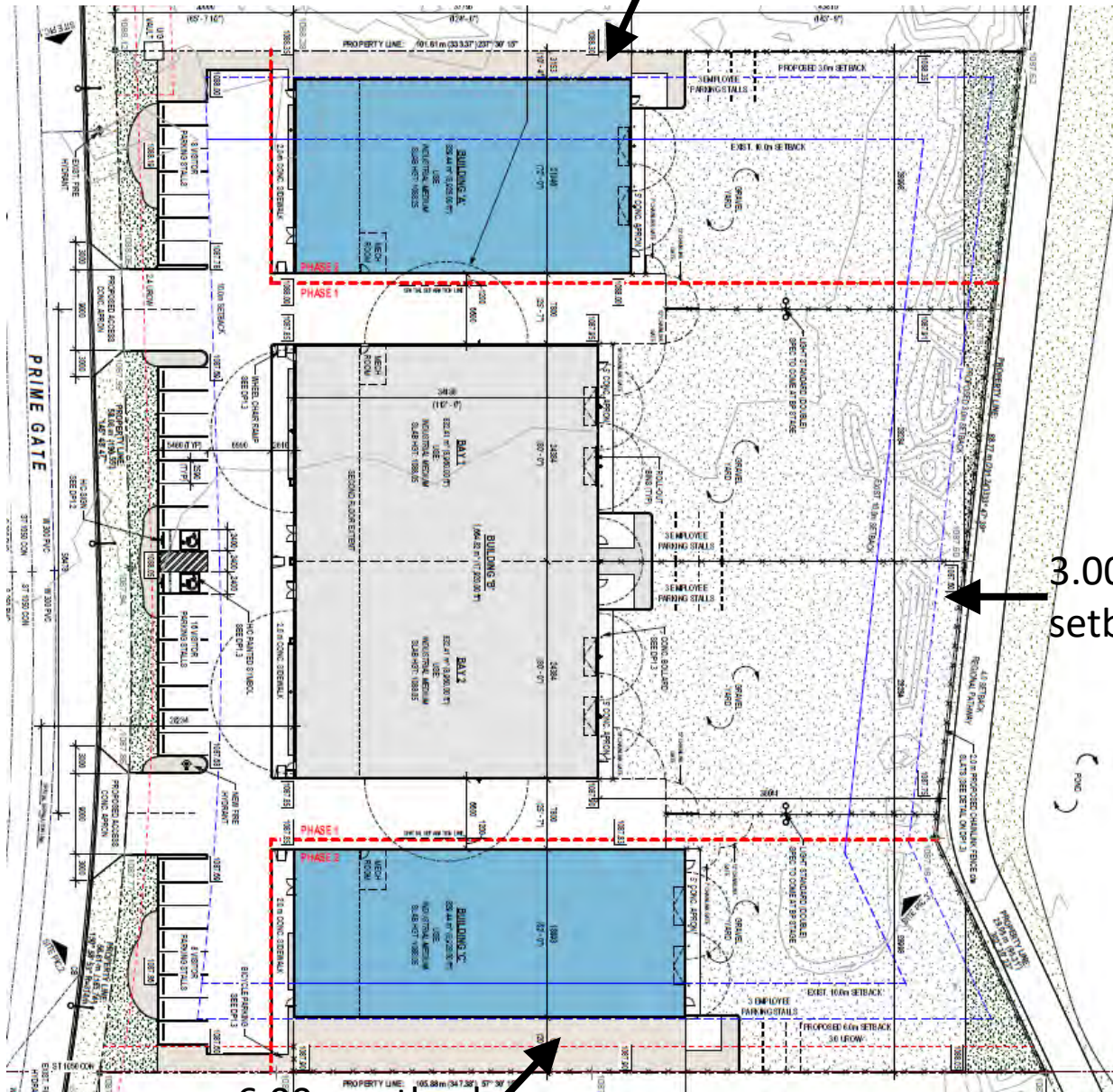


Division: 5
Roll: 06410068
File: PL20240004
Printed: January 12, 2024
Legal: A portion of NW-10-26-29-W04M

Development Proposal

Redesignation Proposal

A site-specific amendment to Direct Control District 99 to allow reduced setback on the northern side yard to 3.00m from 10.00m; the rear yard setback to 3.00m from 10.00m; and the southern side yard to 1.00m from 10.00m.



3.00m setback

6.00m setback

3.00m setback

Division: 5
Roll: 06410068
File: PL20240004
Printed: January 12, 2024
Legal: A portion of NW-10-26-29-W04M

Environmental

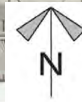
Redesignation Proposal

A site-specific amendment to Direct Control District 99 to allow reduced setback on the northern side yard to 3.00m from 10.00m; the rear yard setback to 3.00m from 10.00m; and the southern side yard to 1.00m from 10.00m.



-  Subject Lands
-  Contour - 2 meters
-  Riparian Setbacks
-  Alberta Wetland Inventory
-  Surface Water

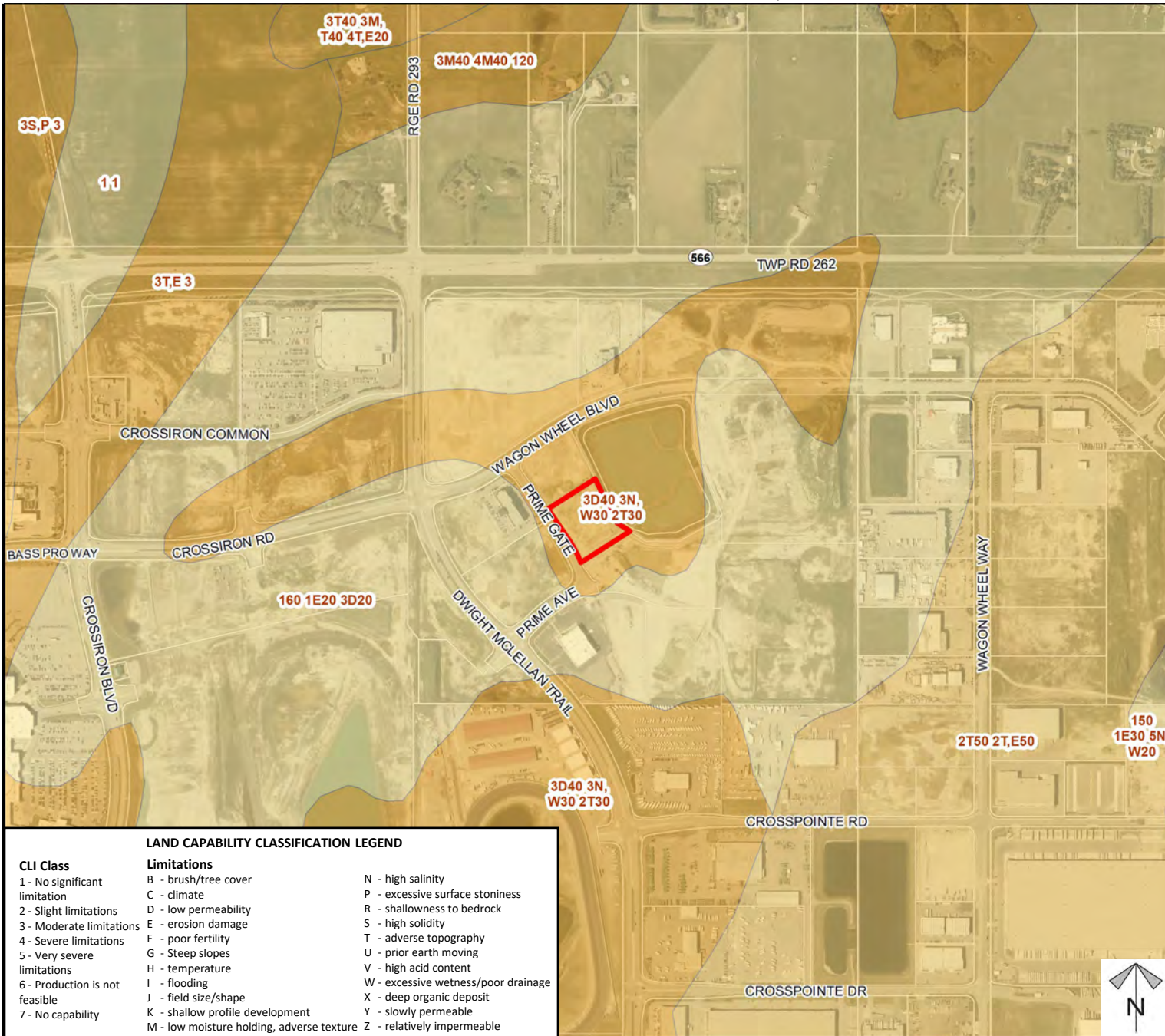
Division: 5
 Roll: 06410068
 File: PL20240004
 Printed: January 12, 2024
 Legal: A portion of NW-10-26-29-W04M



Soil Classifications

Redesignation Proposal

A site-specific amendment to Direct Control District 99 to allow reduced setback on the northern side yard to 3.00m from 10.00m; the rear yard setback to 3.00m from 10.00m; and the southern side yard to 1.00m from 10.00m.



LAND CAPABILITY CLASSIFICATION LEGEND

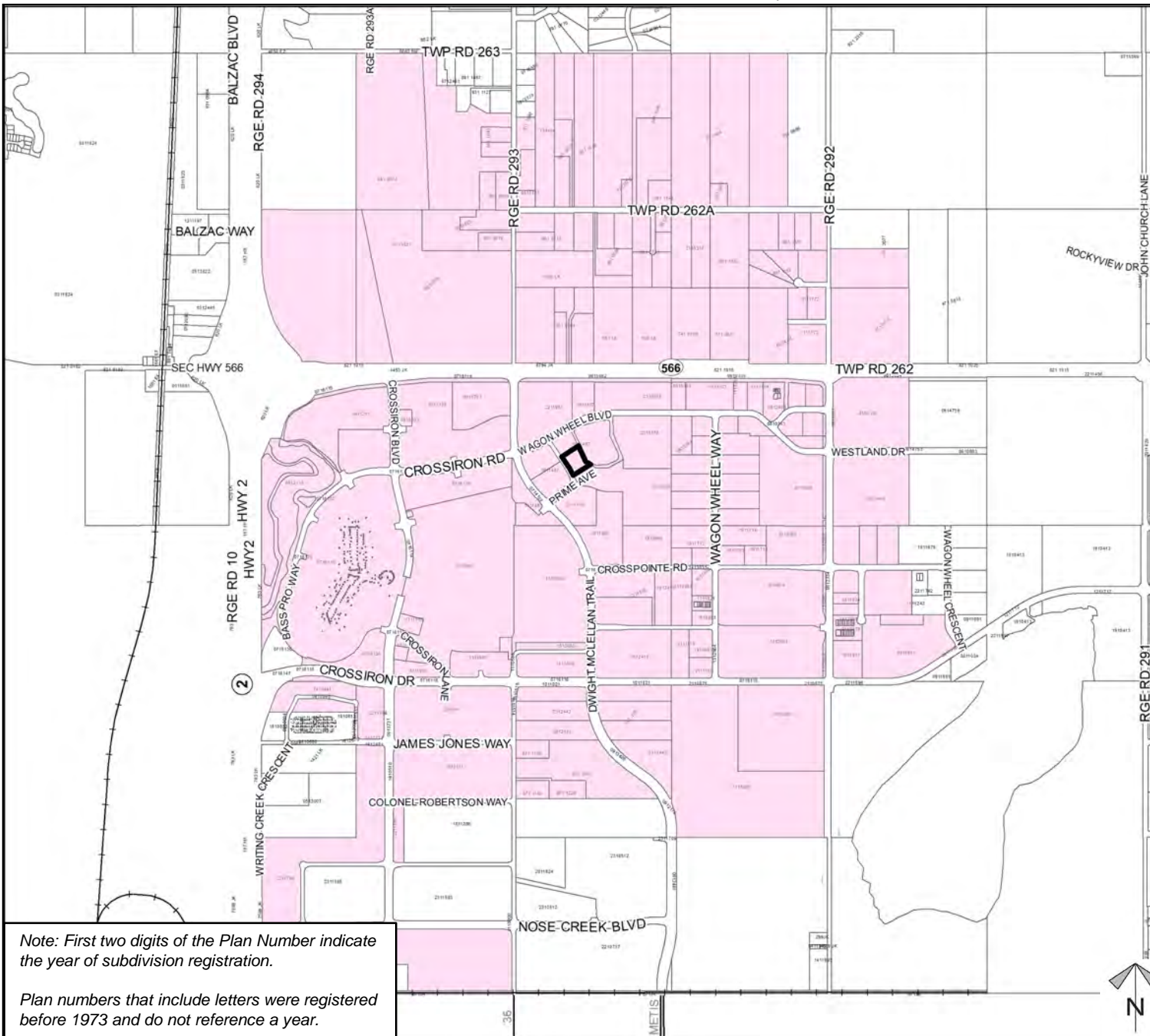
CLI Class	Limitations
1 - No significant limitation	B - brush/tree cover
2 - Slight limitations	C - climate
3 - Moderate limitations	D - low permeability
4 - Severe limitations	E - erosion damage
5 - Very severe limitations	F - poor fertility
6 - Production is not feasible	G - Steep slopes
7 - No capability	H - temperature
	I - flooding
	J - field size/shape
	K - shallow profile development
	M - low moisture holding, adverse texture
	N - high salinity
	P - excessive surface stoniness
	R - shallowness to bedrock
	S - high solidity
	T - adverse topography
	U - prior earth moving
	V - high acid content
	W - excessive wetness/poor drainage
	X - deep organic deposit
	Y - slowly permeable
	Z - relatively impermeable

Division: 5
 Roll: 06410068
 File: PL20240004
 Printed: January 12, 2024
 Legal: A portion of NW-10-26-29-W04M

Landowner Circulation Area

Redesignation Proposal

A site-specific amendment to Direct Control District 99 to allow reduced setback on the northern side yard to 3.00m from 10.00m; the rear yard setback to 3.00m from 10.00m; and the southern side yard to 1.00m from 10.00m.



Legend

Support



Not Support



Note: First two digits of the Plan Number indicate the year of subdivision registration.

Plan numbers that include letters were registered before 1973 and do not reference a year.

Division: 5
 Roll: 06410068
 File: PL20240004
 Printed: January 12, 2024
 Legal: A portion of NW-10-26-29-W04M

