

Location & Context

An amendment to Direct Control District (DC-123) to allow the structures on Unit 316 to have a minimum front yard setback of 1.57 metres (5.15 feet), and minimum side yard setbacks of 2.38 metres (7.80 feet) and 2.35 metres (7.70 feet) instead of the current required 2.4 metres (7.87 feet); this is to allow for the existing garage and covered decks to remain.

Division: 3
Roll: 10013317
File: PL20240128
Printed: 7/10/2024
Legal: A portion of
NE-13-26-06-W05M



Development Proposal

An amendment to Direct Control District (DC-123) to allow the structures on Unit 316 to have a minimum front yard setback of 1.57 metres (5.15 feet), and minimum side yard setbacks of 2.38 metres (7.80 feet) and 2.35 metres (7.70 feet) instead of the current required 2.4 metres (7.87 feet); this is to allow for the existing garage and covered decks to remain.



Division: 3
 Roll: 10013317
 File: PL20240128
 Printed: 7/10/2024
 Legal: A portion of
 NE-13-26-06-W05M



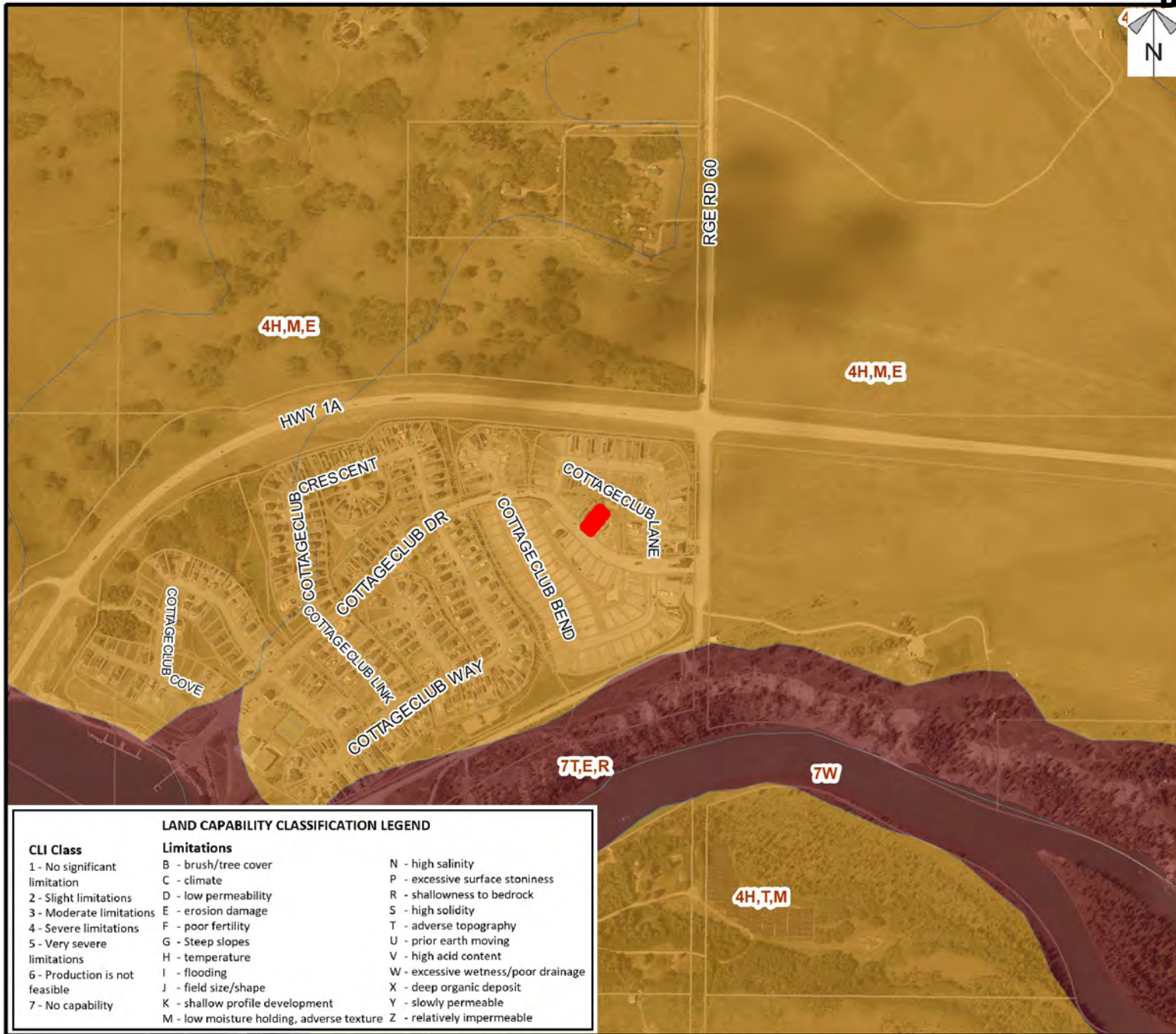
Environmental

An amendment to Direct Control District (DC-123) to allow the structures on Unit 316 to have a minimum front yard setback of 1.57 metres (5.15 feet), and minimum side yard setbacks of 2.38 metres (7.80 feet) and 2.35 metres (7.70 feet) instead of the current required 2.4 metres (7.87 feet); this is to allow for the existing garage and covered decks to remain.

Legend

-  Subject Lands
-  Contour - 2 meters
-  Riparian Setbacks
-  Alberta Wetland Inventory
-  Surface Water

Division: 3
Roll: 10013317
File: PL20240128
Printed: 7/10/2024
Legal: A portion of NE-13-26-06-W05M



Soil Classifications

An amendment to Direct Control District (DC-123) to allow the structures on Unit 316 to have a minimum front yard setback of 1.57 metres (5.15 feet), and minimum side yard setbacks of 2.38 metres (7.80 feet) and 2.35 metres (7.70 feet) instead of the current required 2.4 metres (7.87 feet); this is to allow for the existing garage and covered decks to remain.

LAND CAPABILITY CLASSIFICATION LEGEND		
CLI Class	Limitations	
1 - No significant limitation	B - brush/tree cover	N - high salinity
2 - Slight limitations	C - climate	P - excessive surface stoniness
3 - Moderate limitations	D - low permeability	R - shallowness to bedrock
4 - Severe limitations	E - erosion damage	S - high solidity
5 - Very severe limitations	F - poor fertility	T - adverse topography
6 - Production is not feasible	G - Steep slopes	U - prior earth moving
7 - No capability	H - temperature	V - high acid content
	I - flooding	W - excessive wetness/poor drainage
	J - field size/shape	X - deep organic deposit
	K - shallow profile development	Y - slowly permeable
	M - low moisture holding, adverse texture	Z - relatively impermeable




Division: 3
 Roll: 10013317
 File: PL20240128
 Printed: 7/10/2024
 Legal: A portion of
 NE-13-26-06-W05M



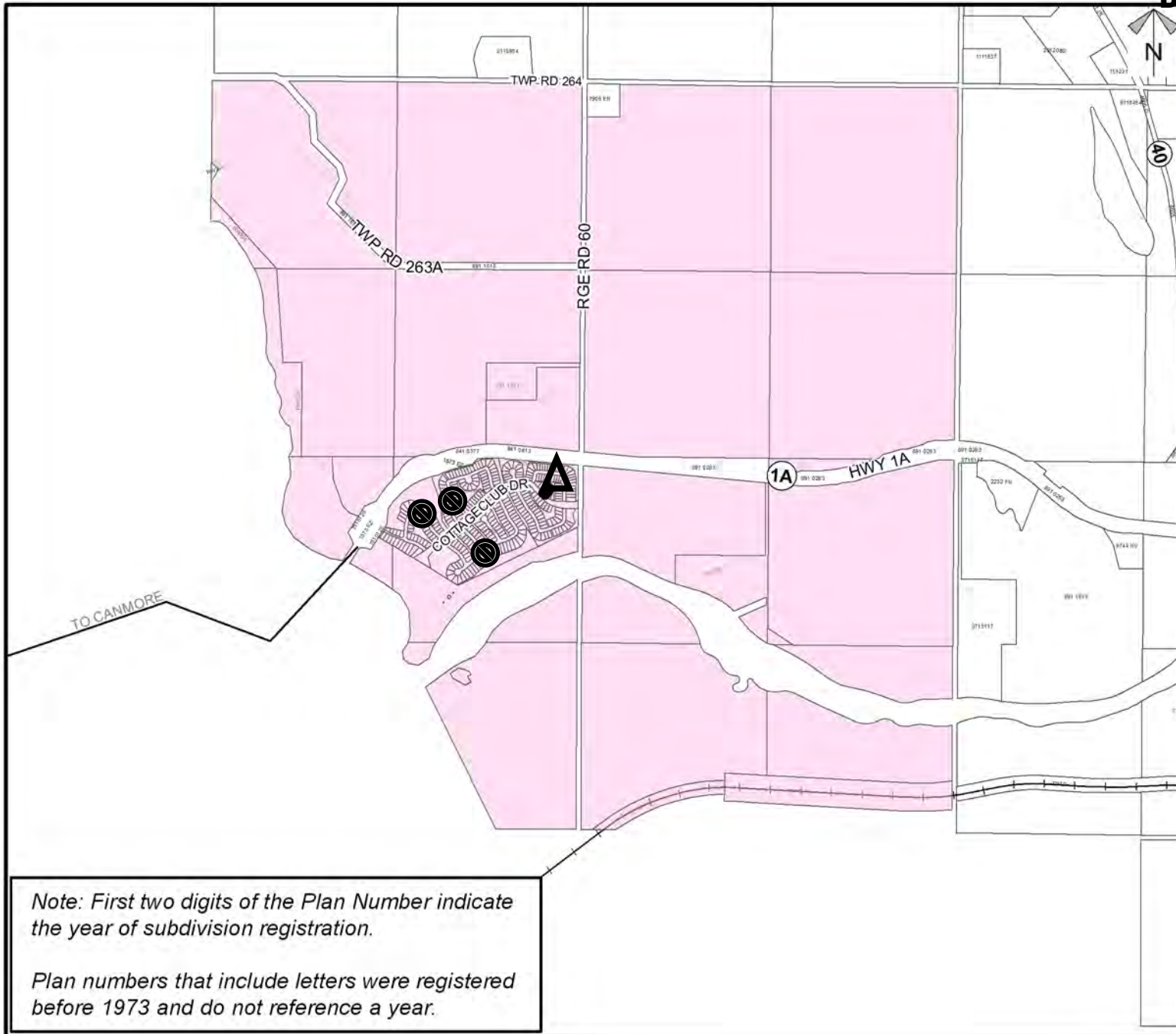
Landowner Circulation Area

An amendment to Direct Control District (DC-123) to allow the structures on Unit 316 to have a minimum front yard setback of 1.57 metres (5.15 feet), and minimum side yard setbacks of 2.38 metres (7.80 feet) and 2.35 metres (7.70 feet) instead of the current required 2.4 metres (7.87 feet); this is to allow for the existing garage and covered decks to remain.

Legend

- Support 
- Concern 
- Not Support 

Division: 3
 Roll: 10013317
 File: PL20240128
 Printed: 7/10/2024
 Legal: A portion of NE-13-26-06-W05M



Note: First two digits of the Plan Number indicate the year of subdivision registration.

Plan numbers that include letters were registered before 1973 and do not reference a year.