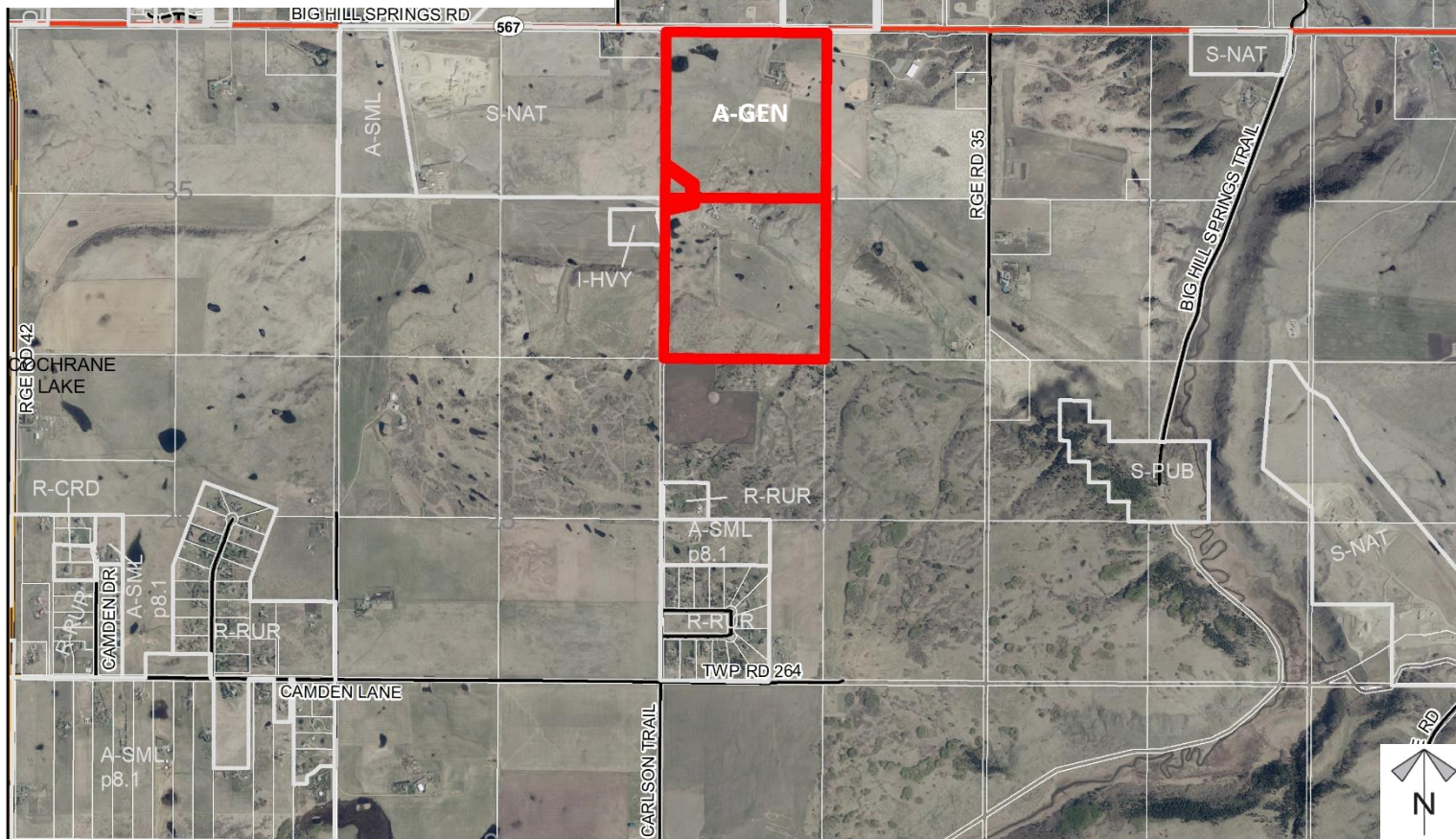
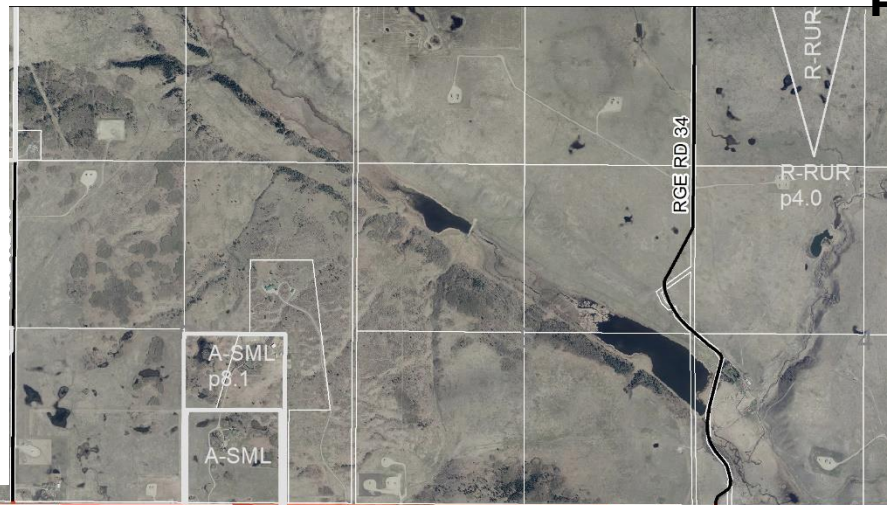
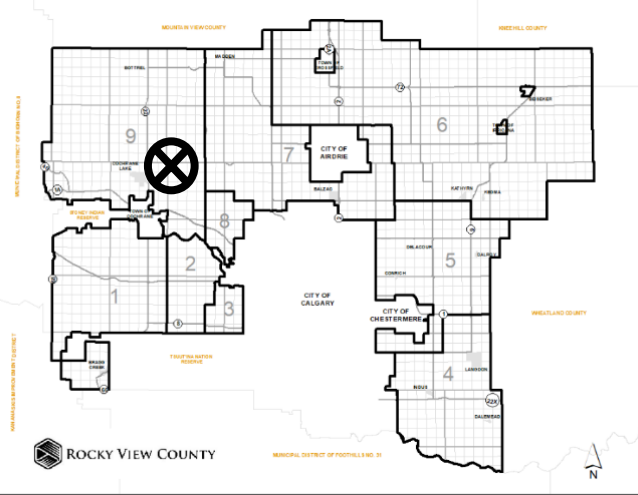


ATTACHMENT 'D': MAP SET

F-1 - Attachment D

Page 1 of 6
ROCKY VIEW COUNTY

Location & Context



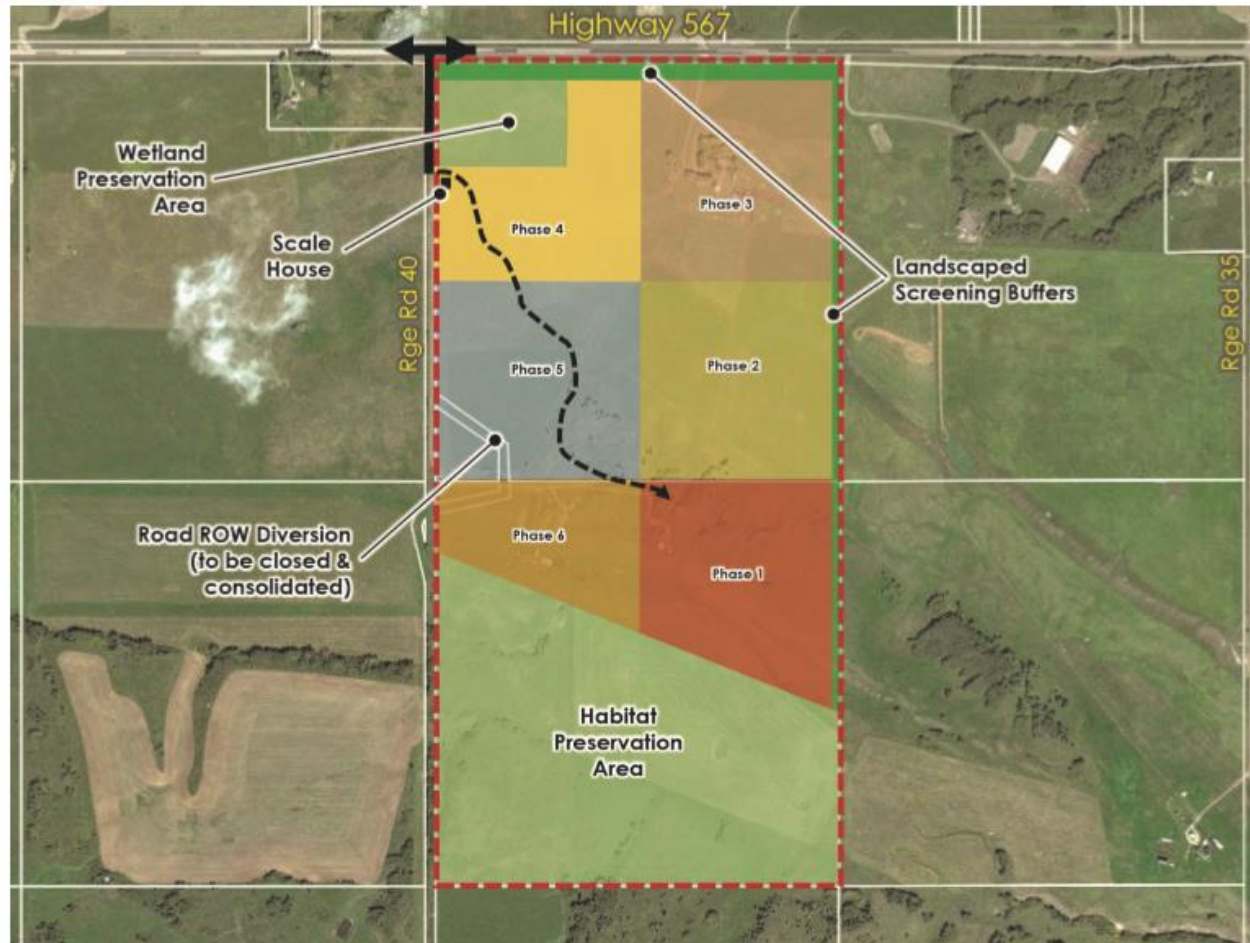
Division: 9
Roll: 06731002/1004
File: PL20200034
Printed: November 3, 2020
Legal: SW/NW-31-26-03-W5M

Development Proposal:

To redesignate the
subject lands from
Agricultural, General
District to Direct Control
District to accommodate
aggregate extraction.



Division: 9
Roll: 06731002/1004
File: PL20200034
Printed: November 3, 2020
Legal: SW/NW-31-26-03-
W5M

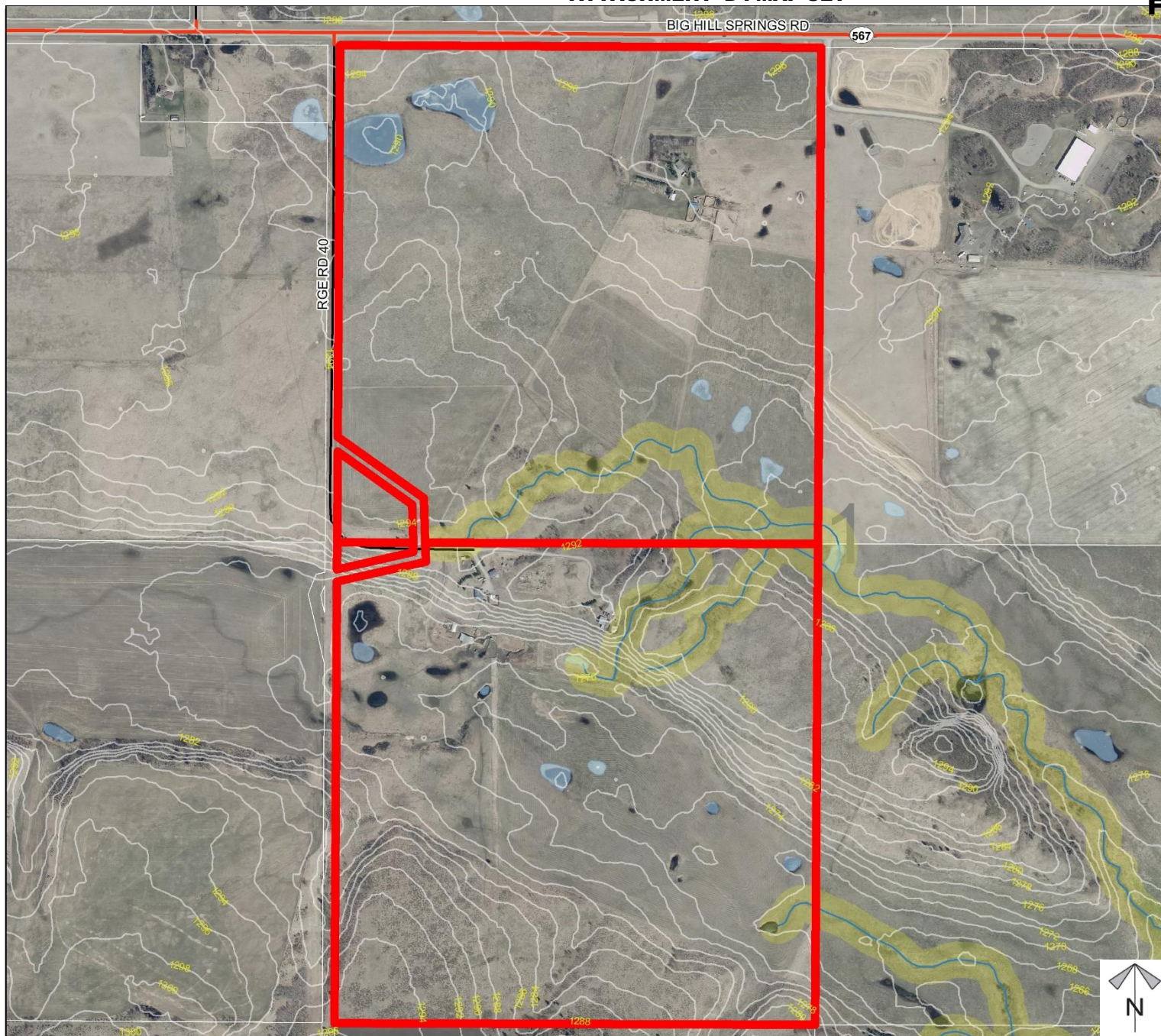
**Figure 7: Development Concept****MSDP Proposal:**

To adopt the Summit Pit
Master Site
Development Report to
provide for aggregate
extraction on the site.



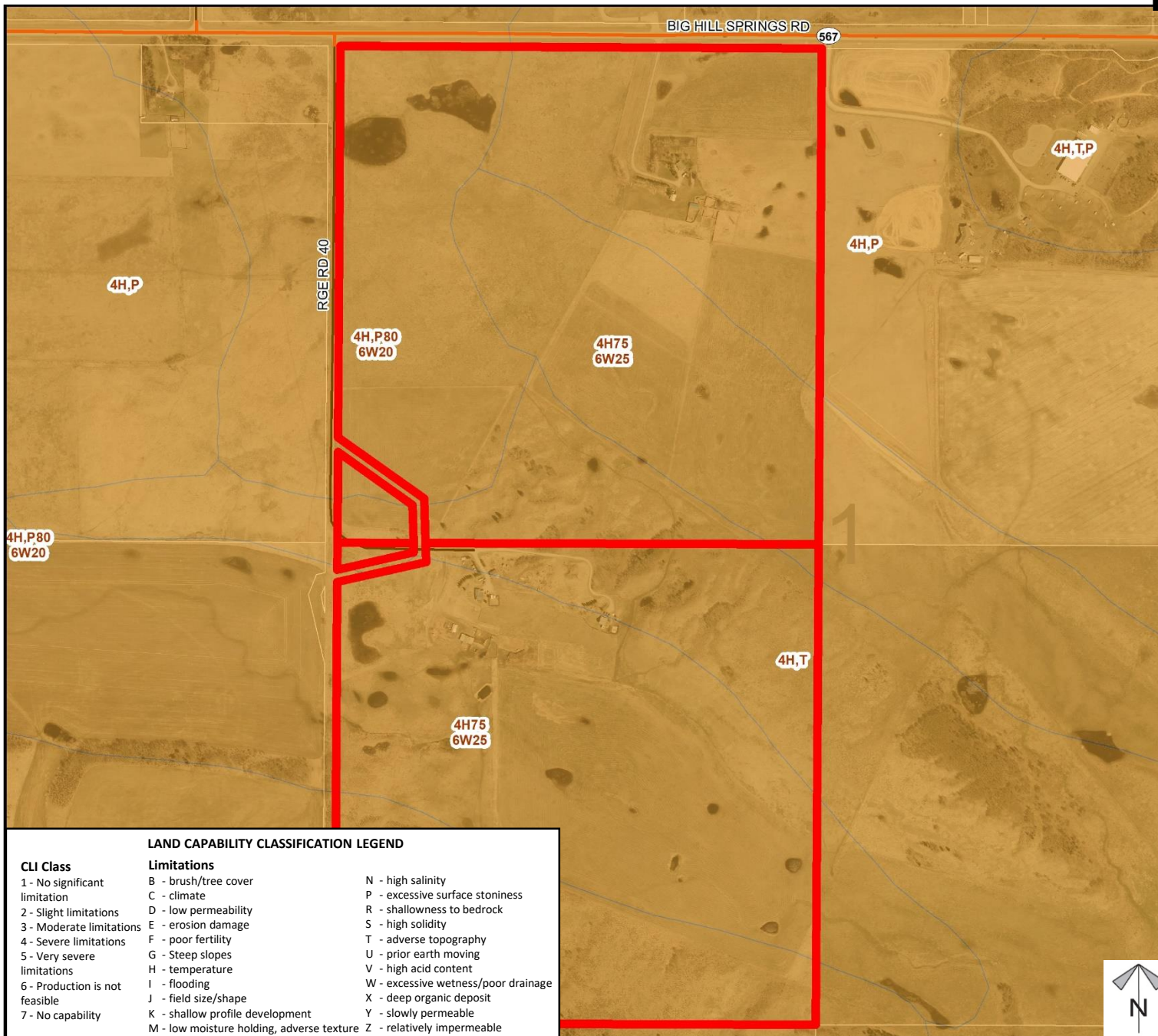


Environmental



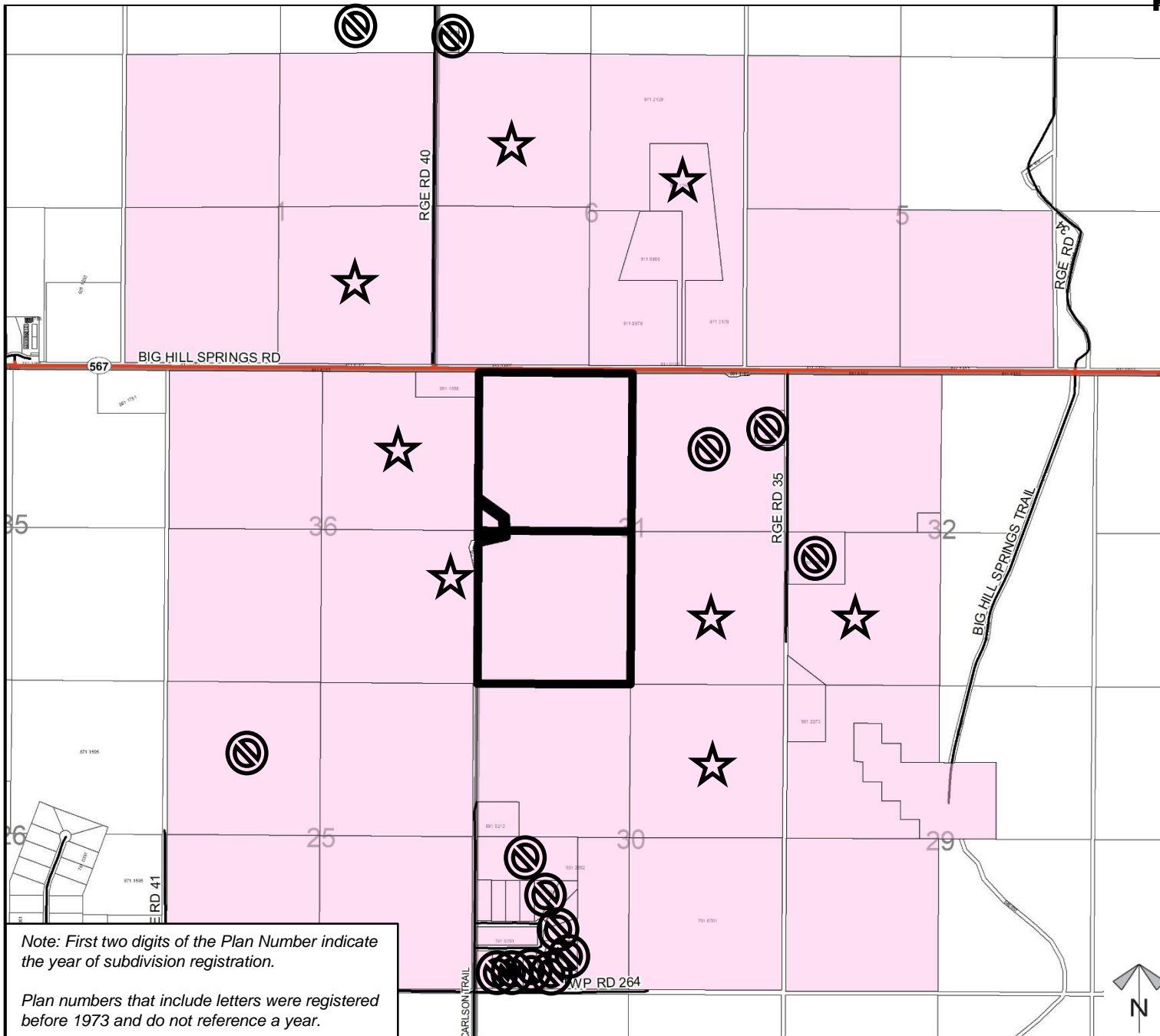
- Subject Lands
- Contour - 2 meters
- Riparian Setbacks
- Alberta Wetland Inventory
- Surface Water

Division: 9
Roll: 06731002/1004
File: PL20200034
Printed: November 3, 2020
Legal: SW/NW-31-26-03-
W5M

Soil
Classifications

Division: 9
 Roll: 06731002/4004
 File: PL20200034
 Printed: November 3, 2020
 Legal: SW/NW-31-26-03-W5M

Landowner Circulation Area



Legend

Support



Opposition



Division: 9

Roll: 06731002/1004

File: PL20200034

Printed: November 3, 2020

Legal: SW/NW-31-26-03-W5M