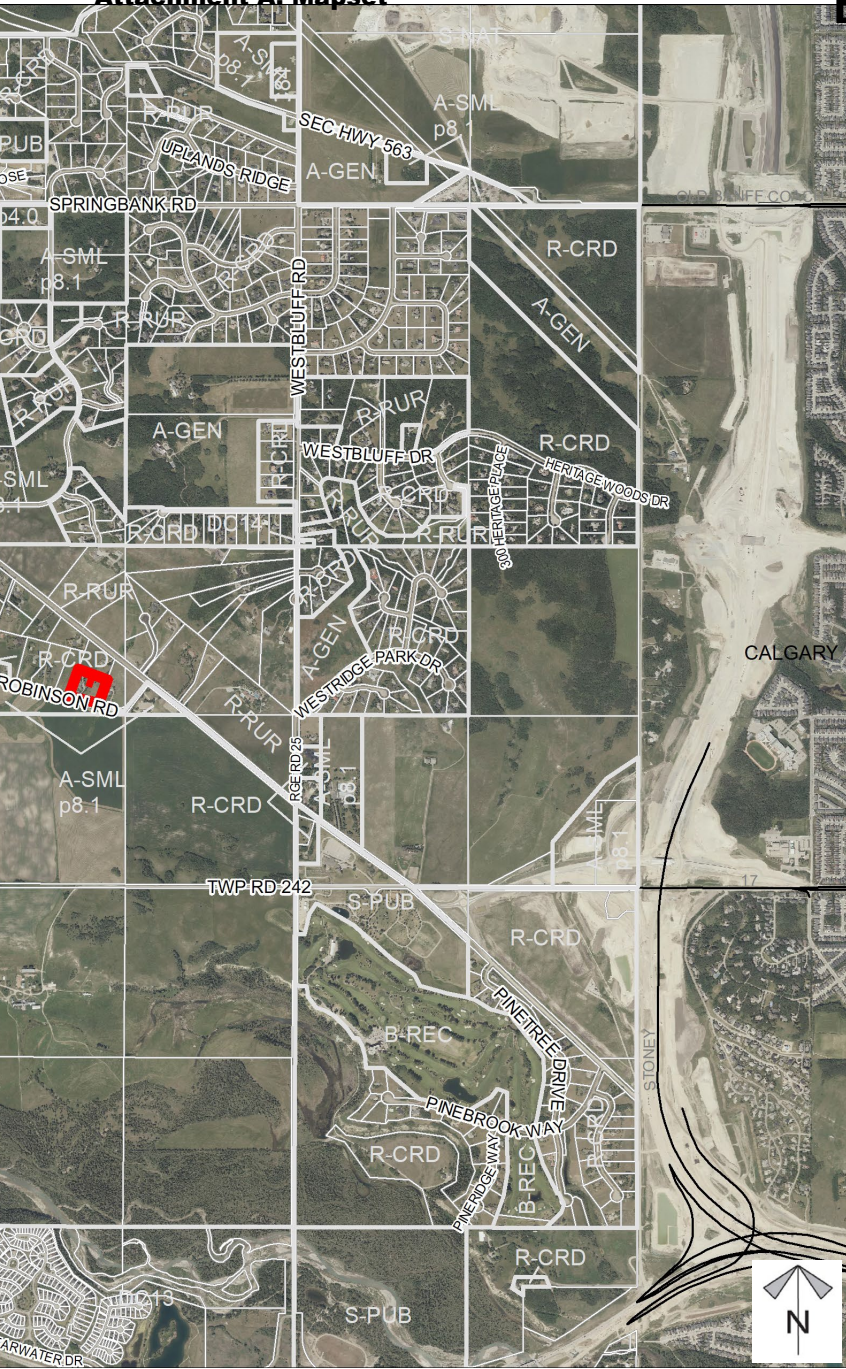
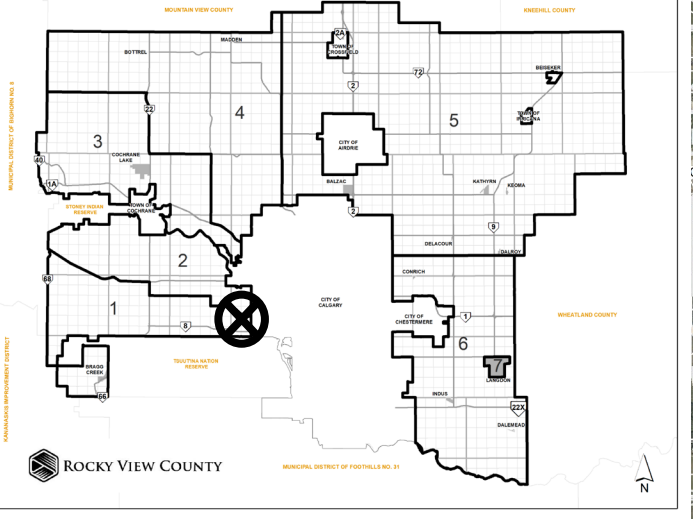


Location & Context

Redesignation Proposal

To redesignate the subject lands from Residential, Rural District (R-RUR) to Residential, Country Residential District (R-CRD) to facilitate future subdivision of one ±0.965 hectare (±2.38 acre) lot.

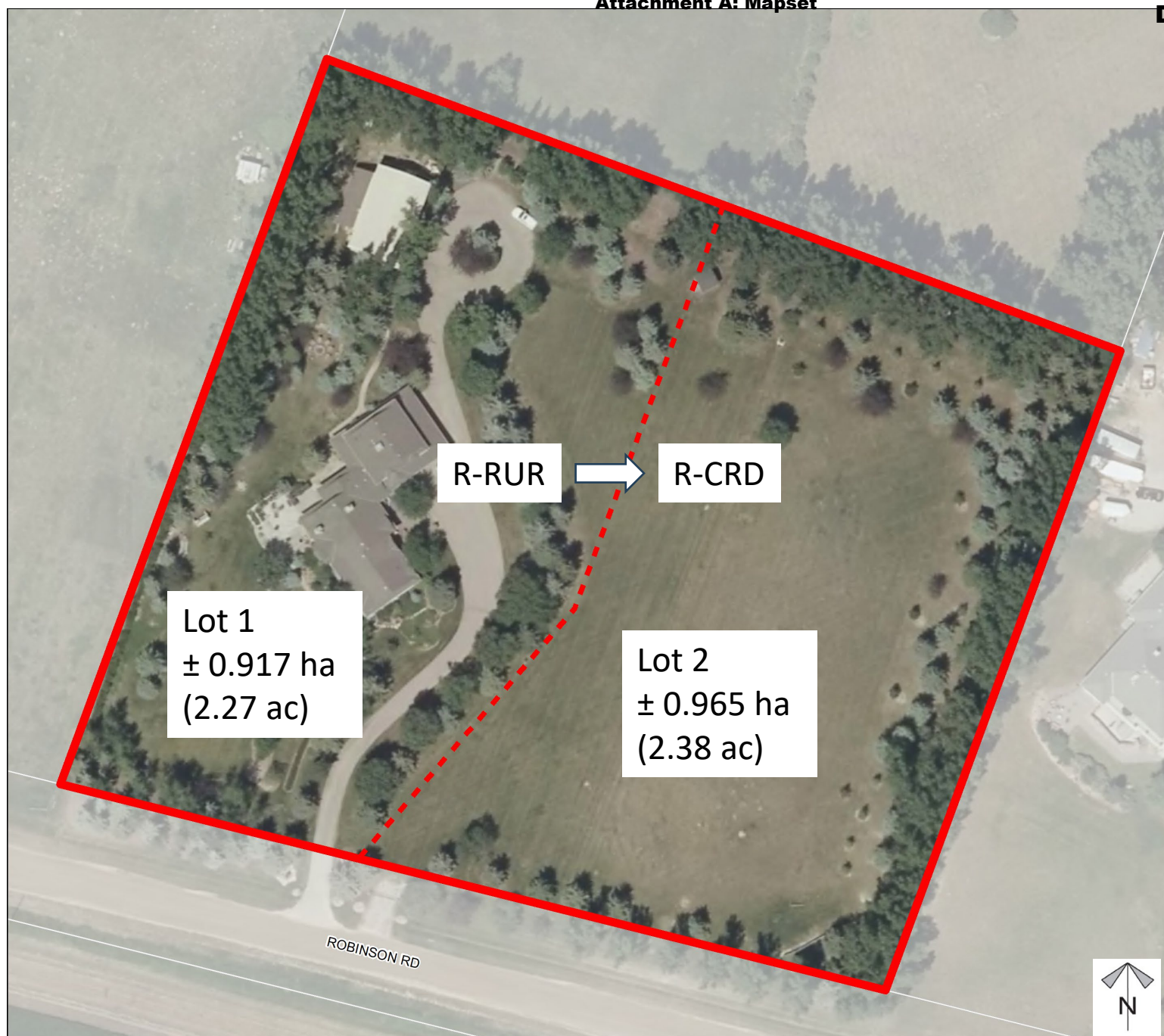


Division: 1
 Roll: 04618033
 File: PL20230157
 Printed: December 22, 2023
 Legal: A portion of NE-18-24-2-W5M

Development Proposal

Redesignation Proposal

To redesignate the subject lands from Residential, Rural District (R-RUR) to Residential, Country Residential District (R-CRD) to facilitate future subdivision of one ± 0.965 hectare (± 2.38 acre) lot.



Lot 1
 ± 0.917 ha
(2.27 ac)

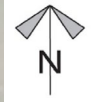
Lot 2
 ± 0.965 ha
(2.38 ac)

R-RUR



R-CRD

ROBINSON RD



Division: 1
Roll: 04618033
File: PL20230157
Printed: December 22, 2023
Legal: A portion of NE-18-24-2-W5M

Environmental

Redesignation
Proposal

To redesignate the subject lands from Residential, Rural District (R-RUR) to Residential, Country Residential District (R-CRD) to facilitate future subdivision of one ±0.965 hectare (±2.38 acre) lot.



-  Subject Lands
-  Contour - 2 meters
-  Riparian Setbacks
-  Alberta Wetland Inventory
-  Surface Water

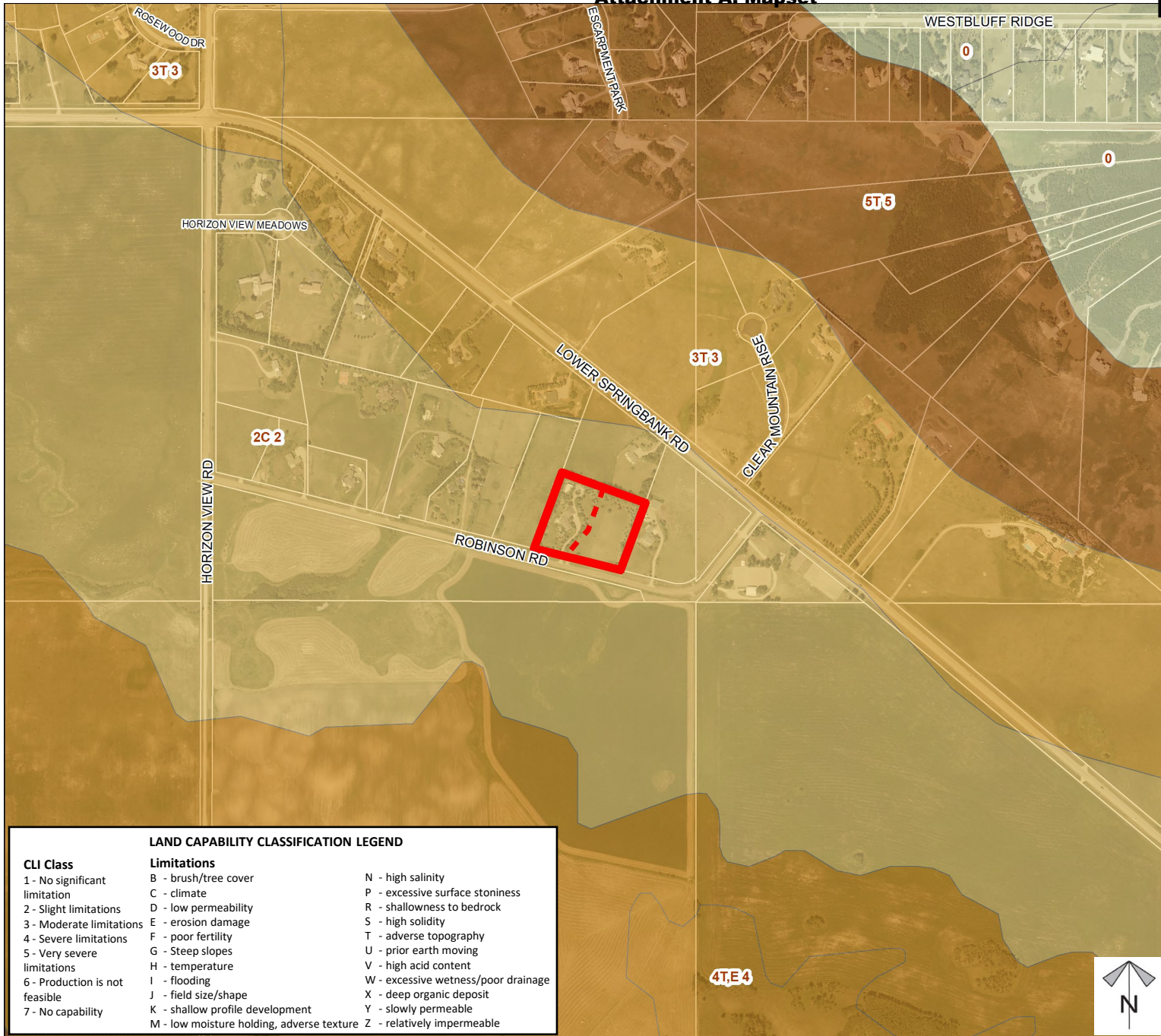


Division: 1
Roll: 04618033
File: PL20230157
Printed: December 22, 2023
Legal: A portion of NE-18-24-2-W5M

Soil Classifications

Redesignation Proposal

To redesignate the subject lands from Residential, Rural District (R-RUR) to Residential, Country Residential District (R-CRD) to facilitate future subdivision of one ±0.965 hectare (±2.38 acre) lot.



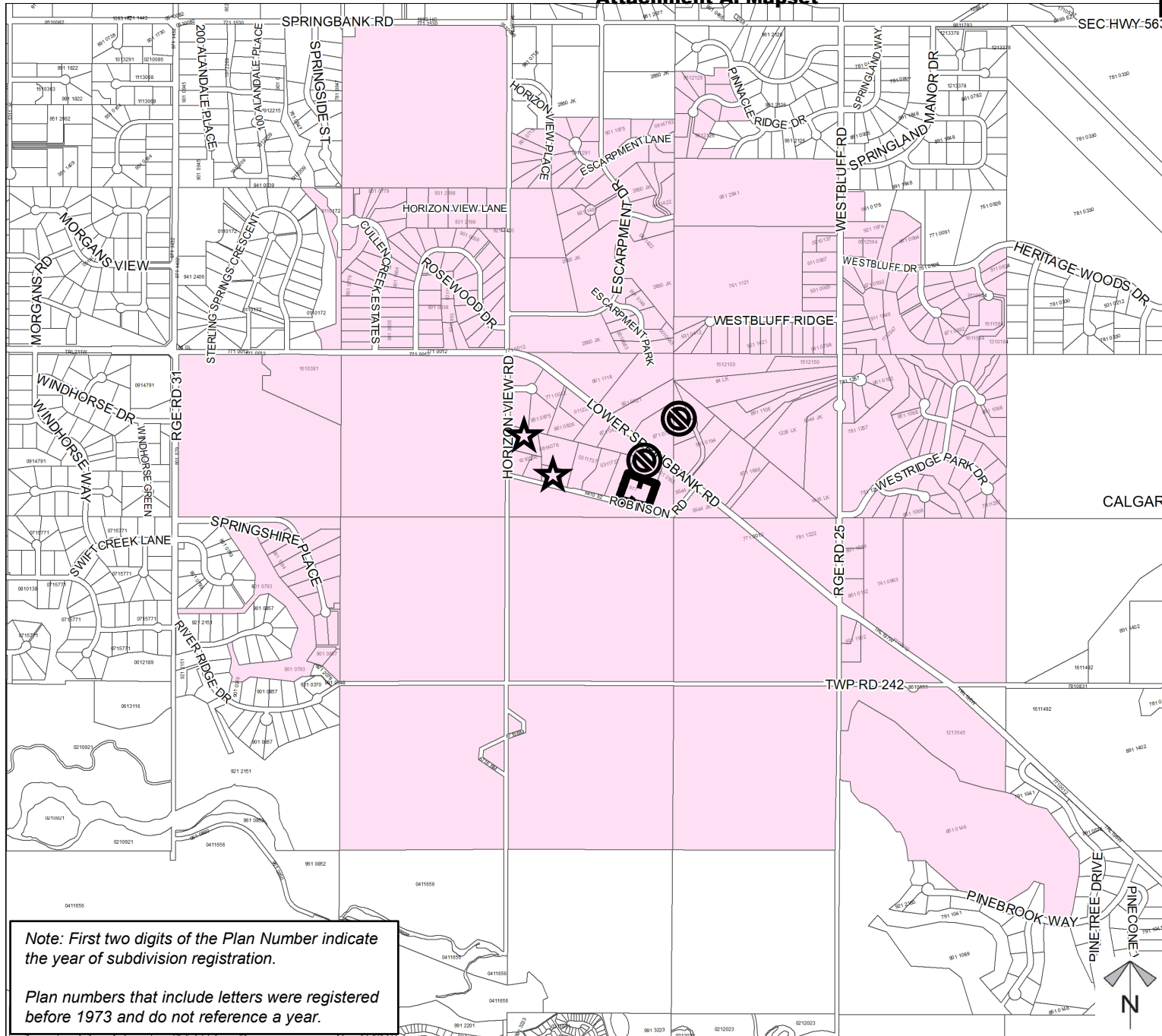
LAND CAPABILITY CLASSIFICATION LEGEND

CLI Class	Limitations	
1 - No significant limitation	B - brush/tree cover	N - high salinity
2 - Slight limitations	C - climate	P - excessive surface stoniness
3 - Moderate limitations	D - low permeability	R - shallowness to bedrock
4 - Severe limitations	E - erosion damage	S - high solidity
5 - Very severe limitations	F - poor fertility	T - adverse topography
6 - Production is not feasible	G - Steep slopes	U - prior earth moving
7 - No capability	H - temperature	V - high acid content
	I - flooding	W - excessive wetness/poor drainage
	J - field size/shape	X - deep organic deposit
	K - shallow profile development	Y - slowly permeable
	M - low moisture holding, adverse texture	Z - relatively impermeable

Division: 1
 Roll: 04618033
 File: PL20230157
 Printed: December 22, 2023
 Legal: A portion of NE-18-24-2-W5M

**Landowner
Circulation
Area
Redesignation
Proposal**

To redesignate the subject lands from Residential, Rural District (R-RUR) to Residential, Country Residential District (R-CRD) to facilitate future subdivision of one ±0.965 hectare (±2.38 acre) lot.



Legend

Support



Not Support



Note: First two digits of the Plan Number indicate the year of subdivision registration.

Plan numbers that include letters were registered before 1973 and do not reference a year.

Division: 1
Roll: 04618033
File: PL20230157
Printed: December 22, 2023
Legal: A portion of NE-18-24-2-W5M