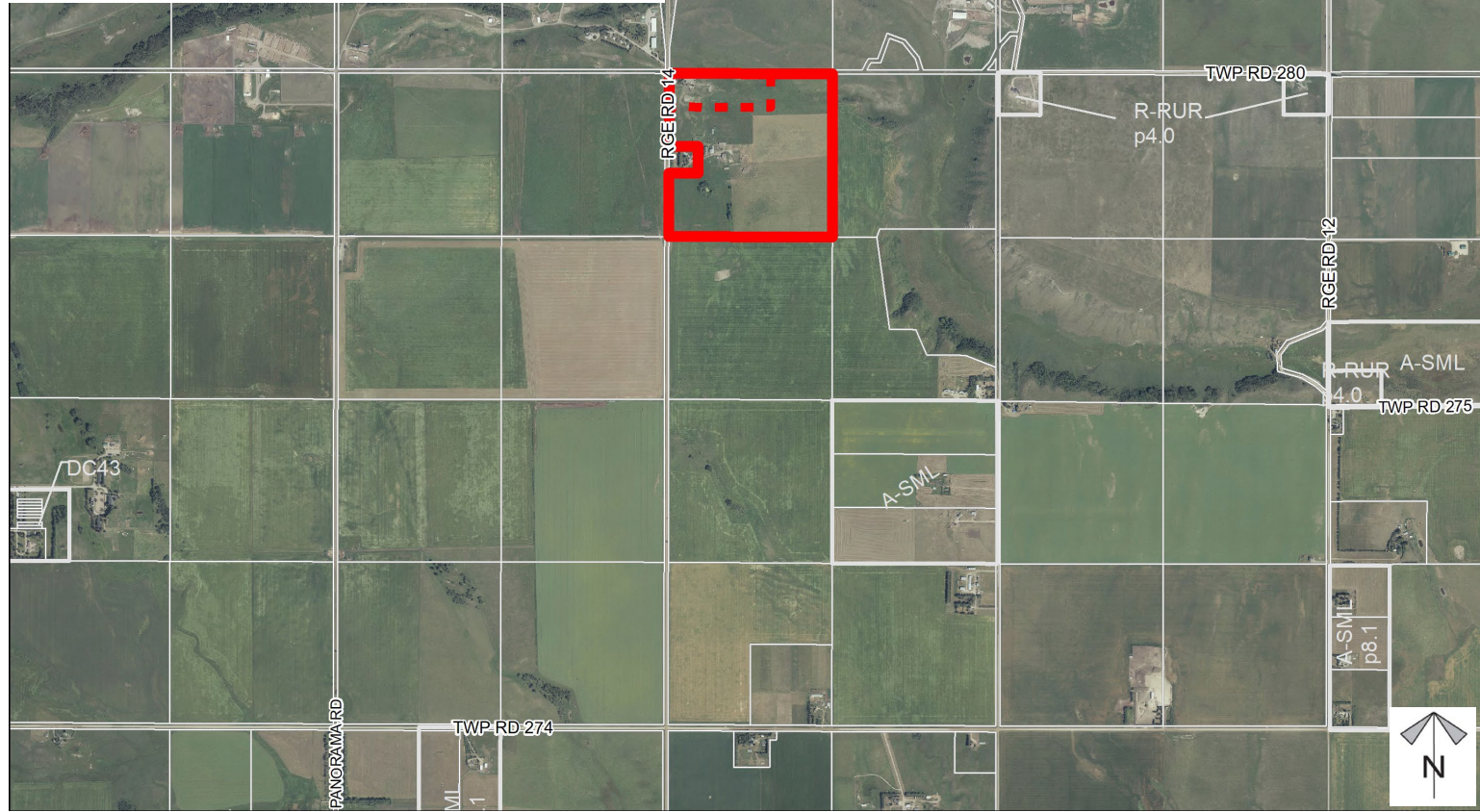
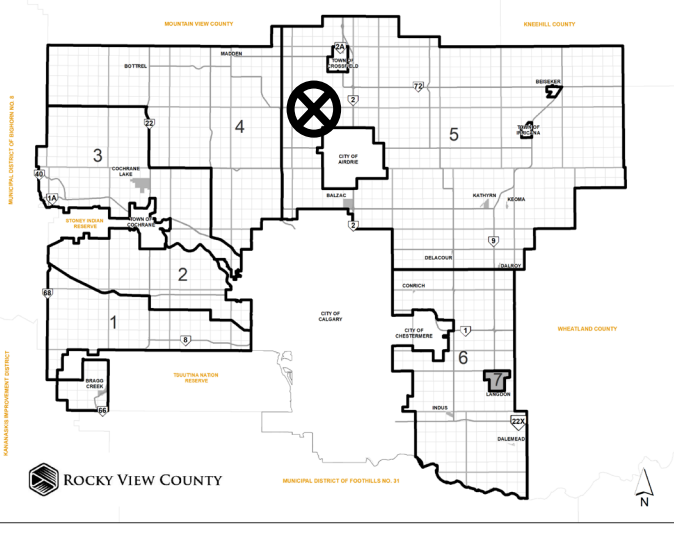


Location & Context

Redesignation Proposal

To redesignate a portion of the subject lands from Agriculture, General District (A-GEN) to Agriculture, Small Parcel District (A-SML p8.1) in order to facilitate future subdivision of one new ± 8.10 hectare (± 20.01 acre) lot with a ± 54.75 hectare (± 135.30 acre) remainder.

Division: 5
Roll: 07533003
File: PL20240002
Printed: Jan 4, 2024
Legal: A portion of NW-33-27-1-W5M

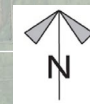


Development Proposal

Redesignation Proposal

To redesignate a portion of the subject lands from Agriculture, General District (A-GEN) to Agriculture, Small Parcel District (A-SML p8.1) in order to facilitate future subdivision of one new ± 8.10 hectare (± 20.01 acre) lot with a ± 54.75 hectare (± 135.30 acre) remainder.

Division: 5
Roll: 07533003
File: PL20240002
Printed: Jan 4, 2024
Legal: A portion of NW-33-27-1-W5M



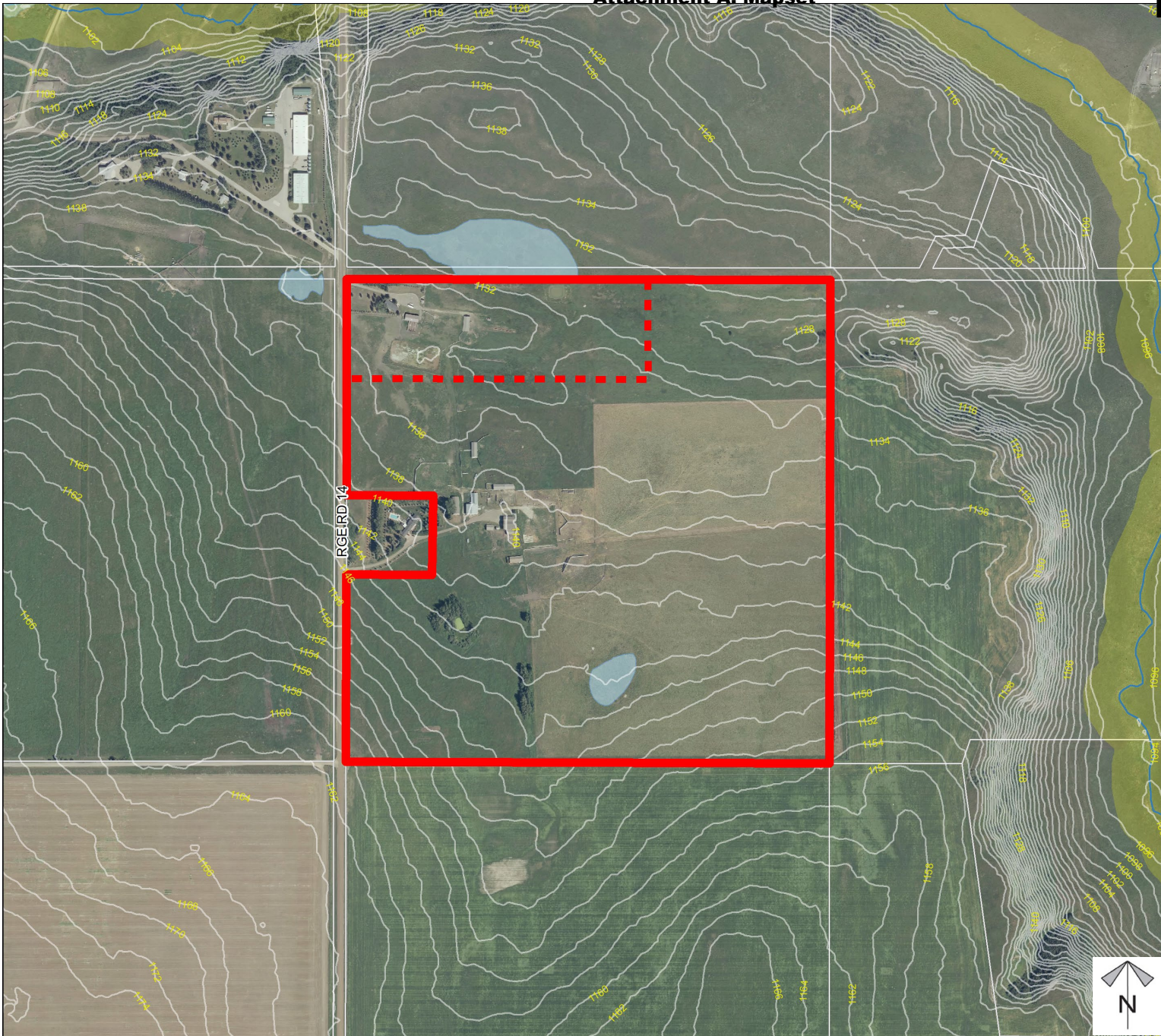
RGE RD 14

A-GEN \rightarrow A-SML p8.1
 ± 8.10 ha
(± 20.01 ac)

Environmental

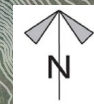
Redesignation Proposal

To redesignate a portion of the subject lands from Agriculture, General District (A-GEN) to Agriculture, Small Parcel District (A-SML p8.1) in order to facilitate future subdivision of one new ± 8.10 hectare (± 20.01 acre) lot with a ± 54.75 hectare (± 135.30 acre) remainder.



-  Subject Lands
-  Contour - 2 meters
-  Riparian Setbacks
-  Alberta Wetland Inventory
-  Surface Water

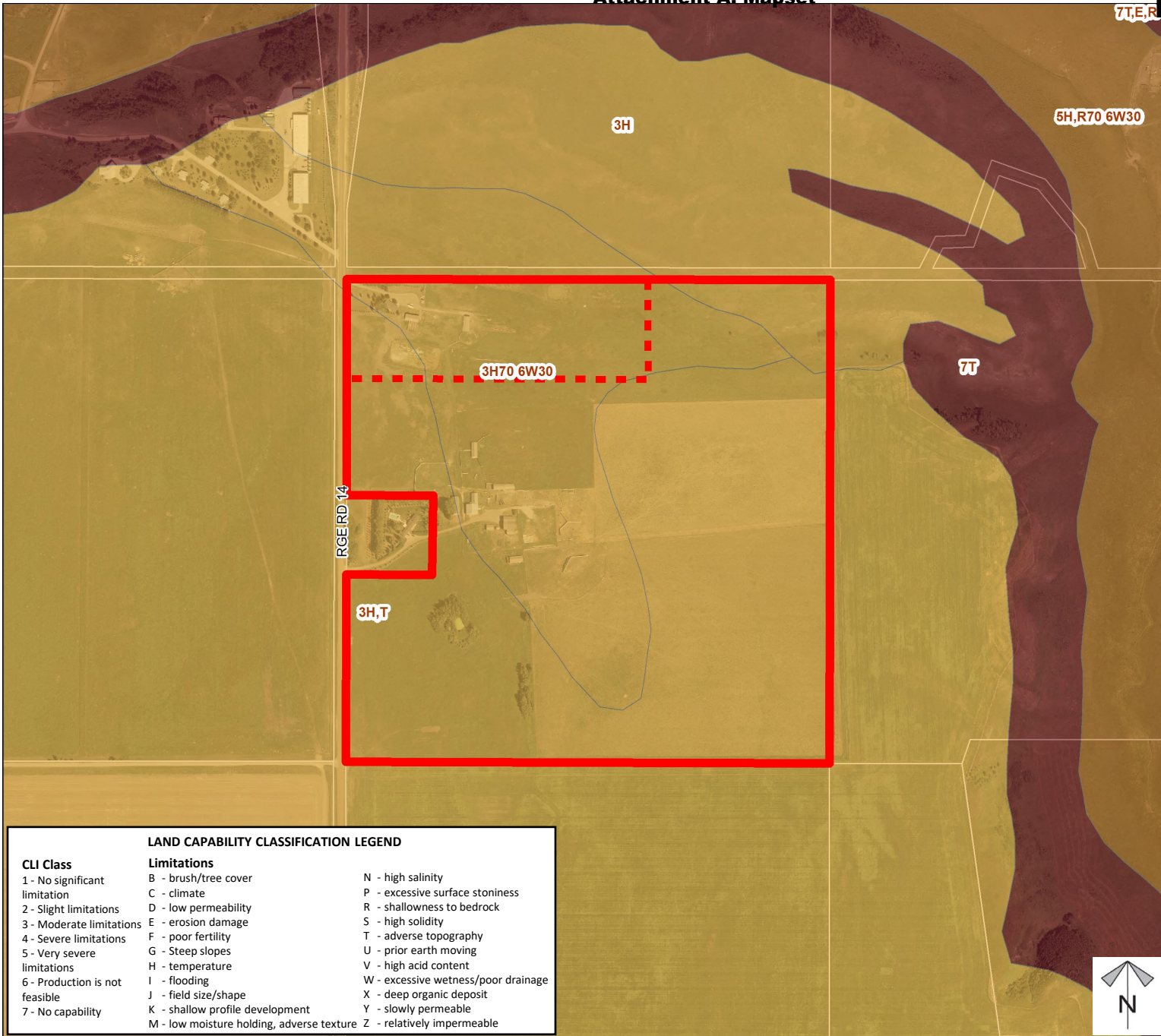
Division: 5
Roll: 07533003
File: PL20240002
Printed: Jan 4, 2024
Legal: A portion of NW-33-27-1-W5M



Soil Classifications

Redesignation Proposal

To redesignate a portion of the subject lands from Agriculture, General District (A-GEN) to Agriculture, Small Parcel District (A-SML p8.1) in order to facilitate future subdivision of one new ± 8.10 hectare (± 20.01 acre) lot with a ± 54.75 hectare (± 135.30 acre) remainder.



LAND CAPABILITY CLASSIFICATION LEGEND

CLI Class	Limitations	
1 - No significant limitation	B - brush/tree cover	N - high salinity
2 - Slight limitations	C - climate	P - excessive surface stoniness
3 - Moderate limitations	D - low permeability	R - shallowness to bedrock
4 - Severe limitations	E - erosion damage	S - high solidity
5 - Very severe limitations	F - poor fertility	T - adverse topography
6 - Production is not feasible	G - Steep slopes	U - prior earth moving
7 - No capability	H - temperature	V - high acid content
	I - flooding	W - excessive wetness/poor drainage
	J - field size/shape	X - deep organic deposit
	K - shallow profile development	Y - slowly permeable
	M - low moisture holding, adverse texture	Z - relatively impermeable

Division: 5
 Roll: 07533003
 File: PL20240002
 Printed: Jan 4, 2024
 Legal: A portion of NW-33-27-1-W5M

Landowner Circulation Area

Redesignation Proposal

To redesignate a portion of the subject lands from Agriculture, General District (A-GEN) to Agriculture, Small Parcel District (A-SML p8.1) in order to facilitate future subdivision of one new ± 8.10 hectare (± 20.01 acre) lot with a ± 54.75 hectare (± 135.30 acre) remainder.

Legend

Support



Not Support



Division: 5
Roll: 07533003
File: PL20240002
Printed: Jan 4, 2024
Legal: A portion of NW-33-27-1-W5M

Note: First two digits of the Plan Number indicate the year of subdivision registration.

Plan numbers that include letters were registered before 1973 and do not reference a year.

