

Location & Context

Subdivision Proposal  
To create a ± 1.72 hectare (±4.25 acre) parcel with a ± 1.71 hectare (± 4.24 acre) remainder.

Division: 3  
Roll: 06715024  
File: PL20240093  
Printed: 5/22/2024  
Legal: A portion of NE-15-26-03-W05M





### Development Proposal

#### Subdivision Proposal

To create a  $\pm 1.72$  hectare ( $\pm 4.25$  acre) parcel with a  $\pm 1.71$  hectare ( $\pm 4.24$  acre) remainder.



Lot 1 $\pm 1.72$ ha ( $\pm 4.25$ ac)	Lot 2 $\pm 1.71$ ha ( $\pm 4.24$ ac)
--	--





### Environmental

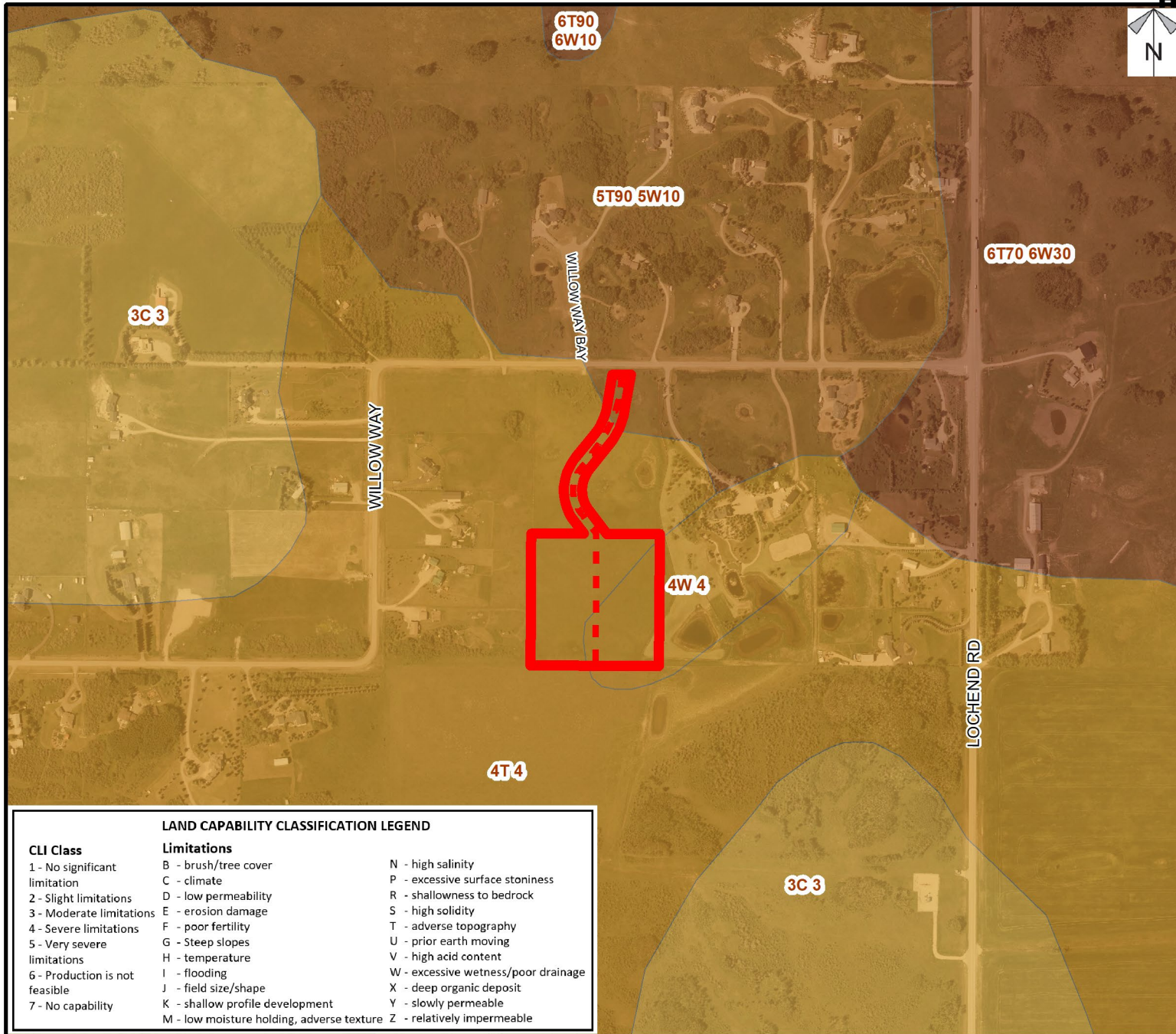
Subdivision Proposal  
To create a ± 1.72  
hectare (±4.25 acre)  
parcel with a ± 1.71  
hectare (± 4.24 acre)  
remainder.

#### Legend

-  Subject Lands
-  Contour - 2 meters
-  Riparian Setbacks
-  Alberta Wetland Inventory
-  Surface Water

Division: 3  
Roll: 06715024  
File: PL20240093  
Printed: 5/22/2024  
Legal: A portion of  
NE-15-26-03-W05M





### Soil Classifications

#### Subdivision Proposal

To create a ± 1.72 hectare (±4.25 acre) parcel with a ± 1.71 hectare (± 4.24 acre) remainder.

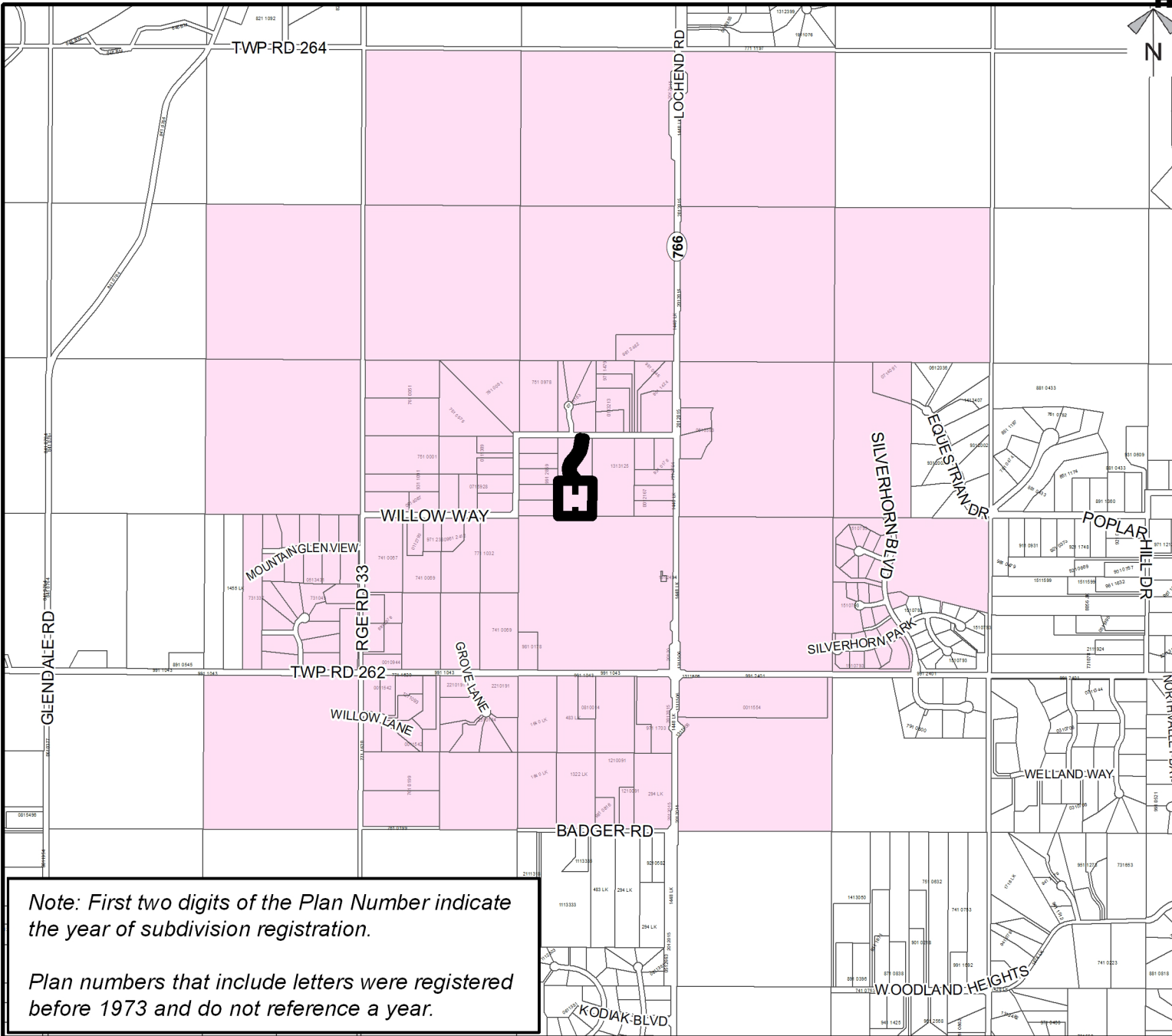
LAND CAPABILITY CLASSIFICATION LEGEND		
CLI Class	Limitations	
1 - No significant limitation	B - brush/tree cover	N - high salinity
2 - Slight limitations	C - climate	P - excessive surface stoniness
3 - Moderate limitations	D - low permeability	R - shallowness to bedrock
4 - Severe limitations	E - erosion damage	S - high solidity
5 - Very severe limitations	F - poor fertility	T - adverse topography
6 - Production is not feasible	G - Steep slopes	U - prior earth moving
7 - No capability	H - temperature	V - high acid content
	I - flooding	W - excessive wetness/poor drainage
	J - field size/shape	X - deep organic deposit
	K - shallow profile development	Y - slowly permeable
	M - low moisture holding, adverse texture	Z - relatively impermeable

Division: 3  
 Roll: 06715024  
 File: PL20240093  
 Printed: 5/22/2024  
 Legal: A portion of NE-15-26-03-W05M



### Landowner Circulation Area

Subdivision Proposal  
To create a ± 1.72  
hectare (±4.25 acre)  
parcel with a ± 1.71  
hectare (± 4.24 acre)  
remainder.



*Note: First two digits of the Plan Number indicate the year of subdivision registration.*

*Plan numbers that include letters were registered before 1973 and do not reference a year.*

#### Legend

Support



Not Support



Division: 3  
Roll: 06715024  
File: PL20240093  
Printed: 5/22/2024  
Legal: A portion of  
NE-15-26-03-W05M