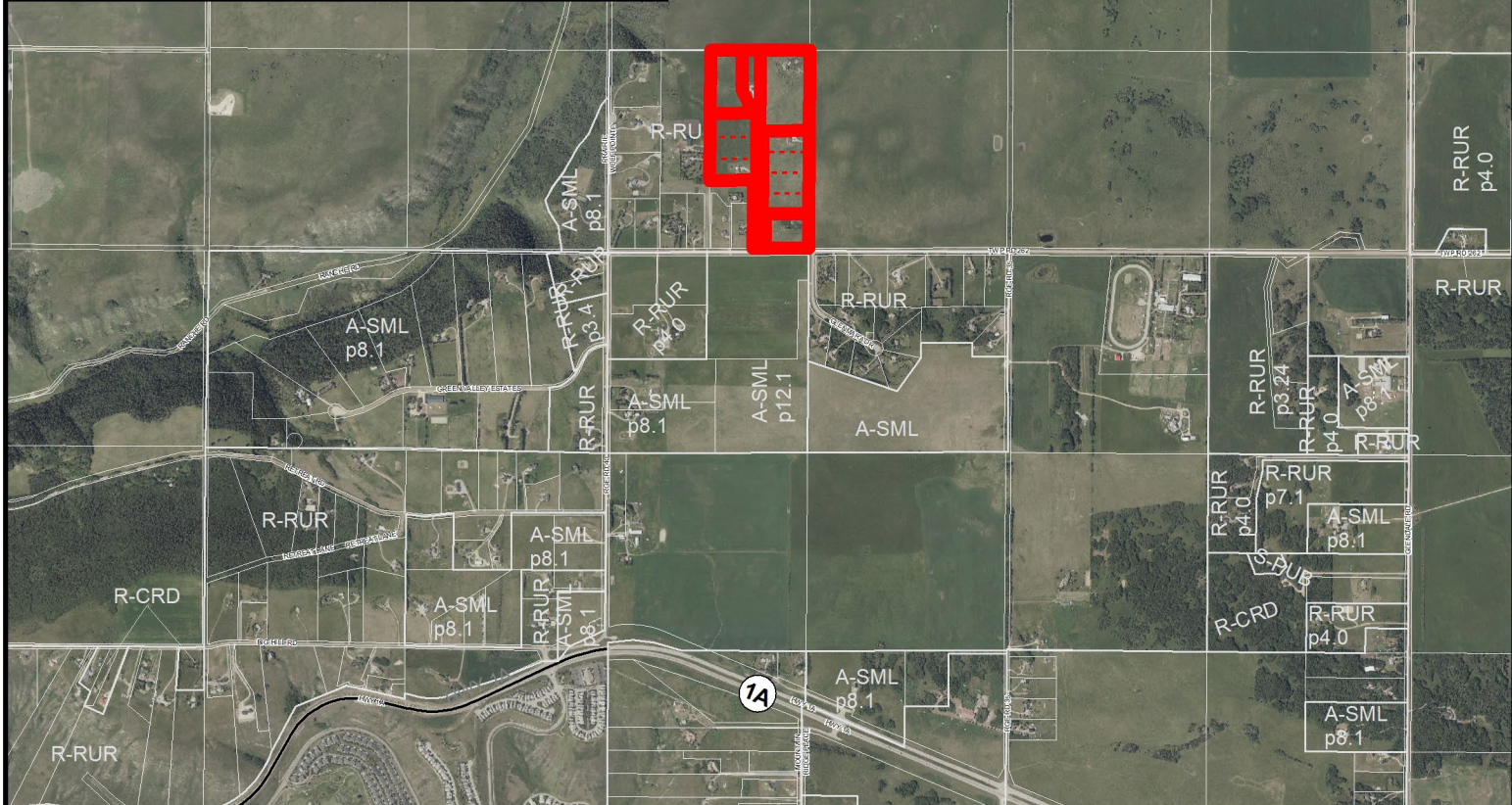


Location & Context

To create three ± 1.69 hectare (± 4.18 acre) parcels with a ± 1.73 hectare (± 4.028 acre) remainder, two ± 1.57 hectare (± 3.88 acre) parcels with a ± 1.57 hectare (± 3.88 acre) remainder, and to facilitate boundary adjustments to accommodate the construction of a new internal road within SW-18-26-3-W5.

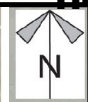


Division: 3
Roll: 06718019, 06718010,
06718020, 06718008,
06718011, 06718022
File: PL20220156
Printed: 10/1/2024
Legal: A portion of
SW-18-26-03-W05M



Development Proposal

To create three ± 1.69 hectare (± 4.18 acre) parcels with a ± 1.73 hectare (± 4.028 acre) remainder, two ± 1.57 hectare (± 3.88 acre) parcels with a ± 1.57 hectare (± 3.88 acre) remainder, and to facilitate boundary adjustments to accommodate the construction of a new internal road within SW-18-26-3-W5.



Division: 3
Roll: 06718019, 06718010,
06718020, 06718008,
06718011, 06718022
File: PL20220156
Printed: 10/1/2024
Legal: A portion of
SW-18-26-03-W05M



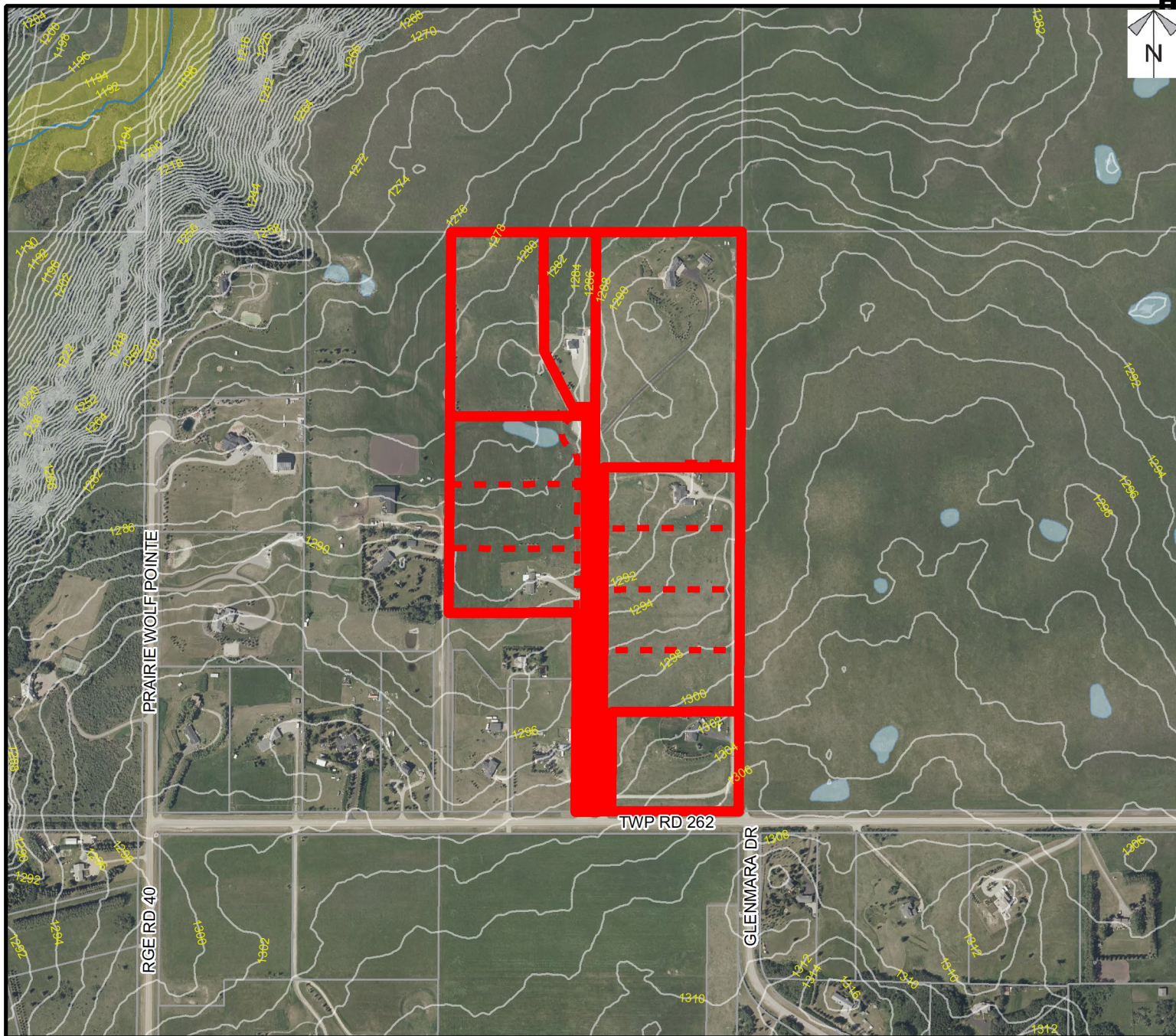
Environmental

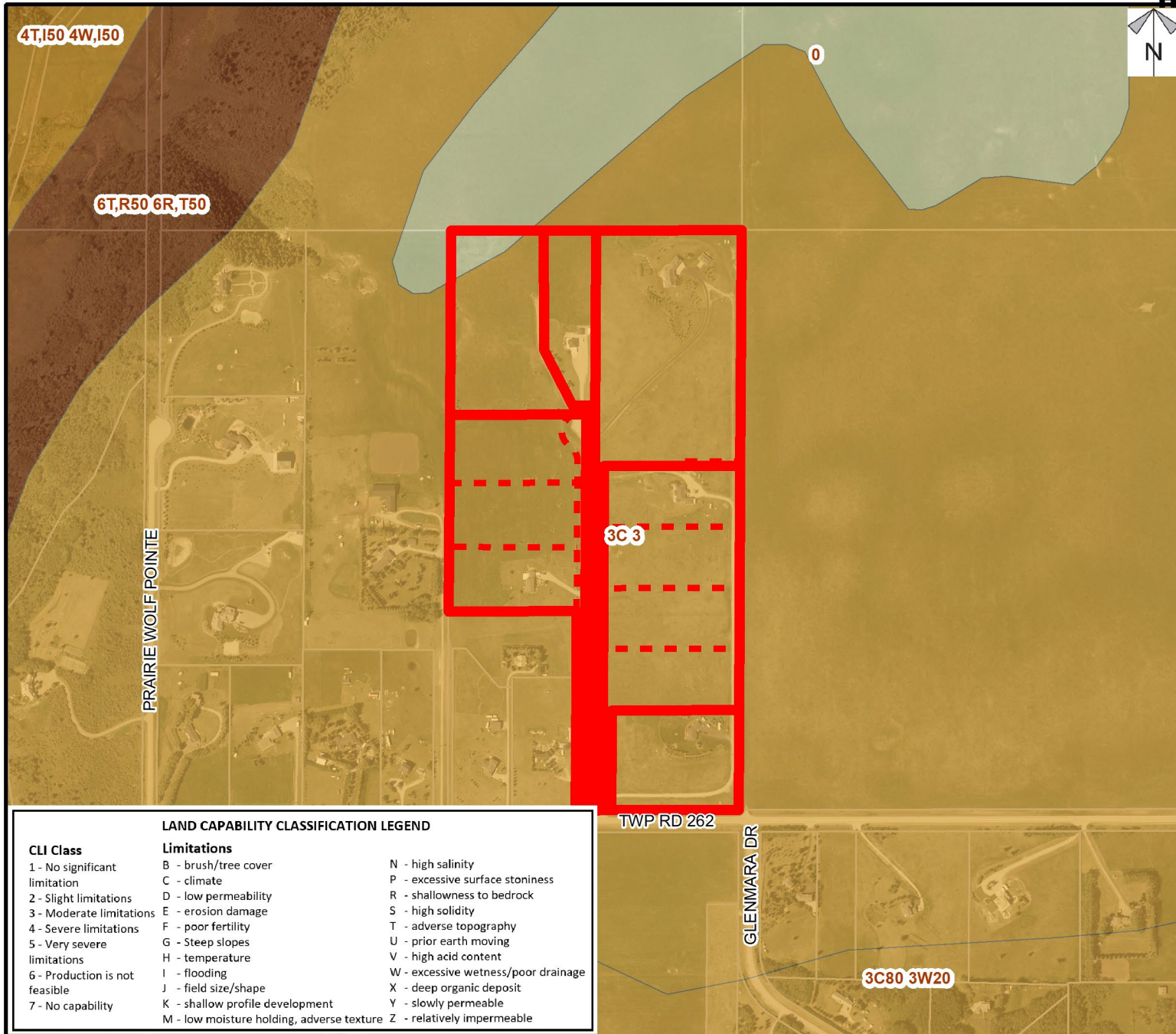
To create three ± 1.69 hectare (± 4.18 acre) parcels with a ± 1.73 hectare (± 4028 acre) remainder, two ±1.57 hectare (± 3.88 acre) parcels with a ± 1.57 hectare (± 3.88 acre) remainder, and to facilitate boundary adjustments to accommodate the construction of a new internal road within SW-18-26-3-W5.

Legend

-  Subject Lands
-  Contour - 2 meters
-  Riparian Setbacks
-  Alberta Wetland Inventory
-  Surface Water

Division: 3
Roll: 06718019, 06718010,
06718020, 06718008,
06718011, 06718022
File: PL20220156
Printed: 10/1/2024
Legal: A portion of
SW-18-26-03-W05M





Soil Classifications

To create three ± 1.69 hectare (± 4.18 acre) parcels with a ± 1.73 hectare (± 4.028 acre) remainder, two ± 1.57 hectare (± 3.88 acre) parcels with a ± 1.57 hectare (± 3.88 acre) remainder, and to facilitate boundary adjustments to accommodate the construction of a new internal road within SW-18-26-3-W5.

LAND CAPABILITY CLASSIFICATION LEGEND		
CLI Class	Limitations	
1 - No significant limitation	B - brush/tree cover	N - high salinity
2 - Slight limitations	C - climate	P - excessive surface stoniness
3 - Moderate limitations	D - low permeability	R - shallowness to bedrock
4 - Severe limitations	E - erosion damage	S - high solidity
5 - Very severe limitations	F - poor fertility	T - adverse topography
6 - Production is not feasible	G - Steep slopes	U - prior earth moving
7 - No capability	H - temperature	V - high acid content
	I - flooding	W - excessive wetness/poor drainage
	J - field size/shape	X - deep organic deposit
	K - shallow profile development	Y - slowly permeable
	M - low moisture holding, adverse texture	Z - relatively impermeable

Division: 3
 Roll: 06718019, 06718010,
 06718020, 06718008,
 06718011, 06718022
 File: PL20220156
 Printed: 10/1/2024
 Legal: A portion of
 SW-18-26-03-W05M



Landowner Circulation Area

To create three ± 1.69 hectare (± 4.18 acre) parcels with a ± 1.73 hectare (± 4028 acre) remainder, two ± 1.57 hectare (± 3.88 acre) parcels with a ± 1.57 hectare (± 3.88 acre) remainder, and to facilitate boundary adjustments to accommodate the construction of a new internal road within SW-18-26-3-W5.

- 2 letters in opposition were received
- 1 letter was unable to be mapped

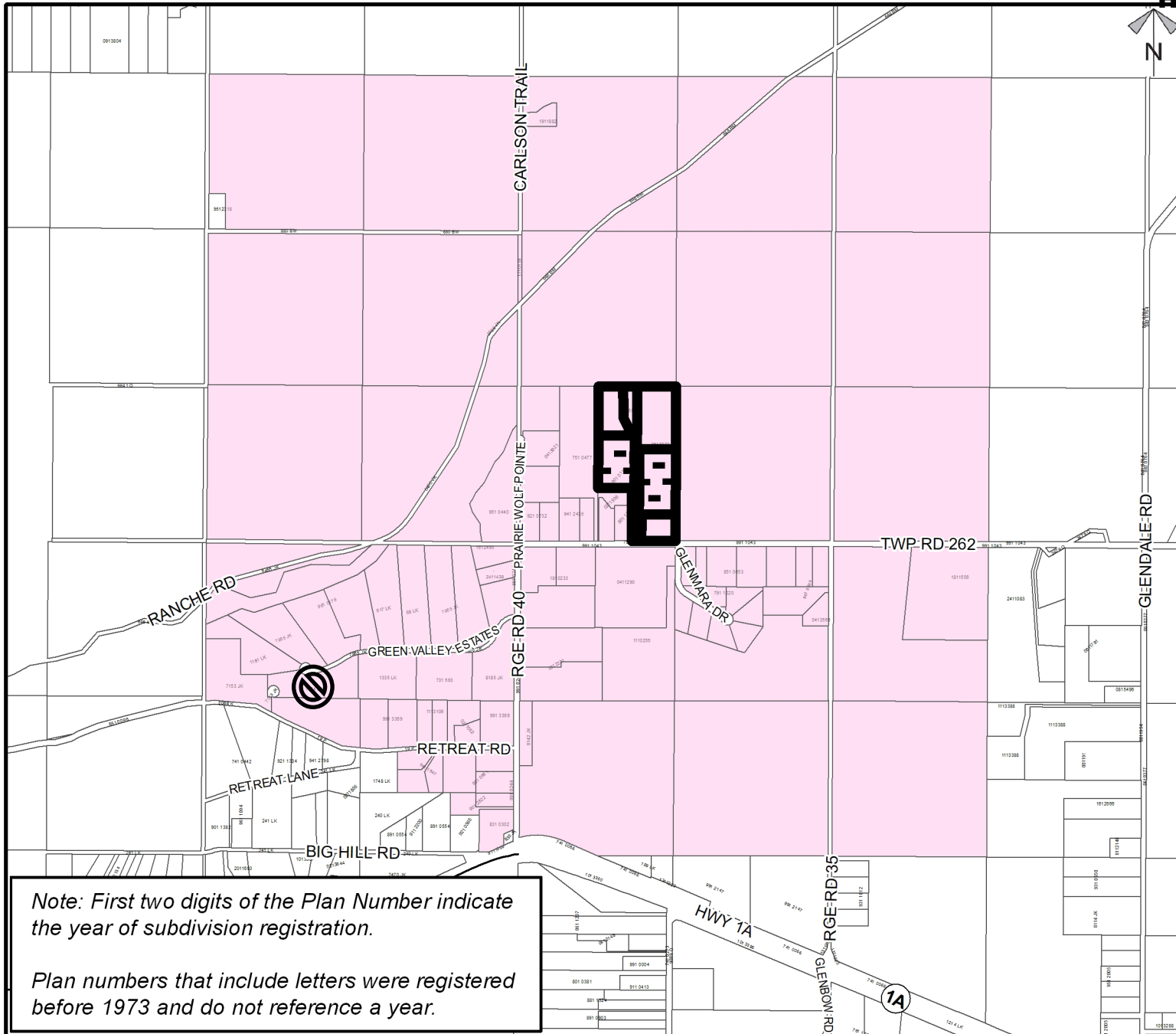
Legend

Support 

Not Support 

Division: 3
Roll: 06718019, 06718010,
06718020, 06718008,
06718011, 06718022

File: PL20220156
Printed: 10/1/2024
Legal: A portion of
SW-18-26-03-W05M



Note: First two digits of the Plan Number indicate the year of subdivision registration.

Plan numbers that include letters were registered before 1973 and do not reference a year.

Tentative Plan

Subdivision Proposal

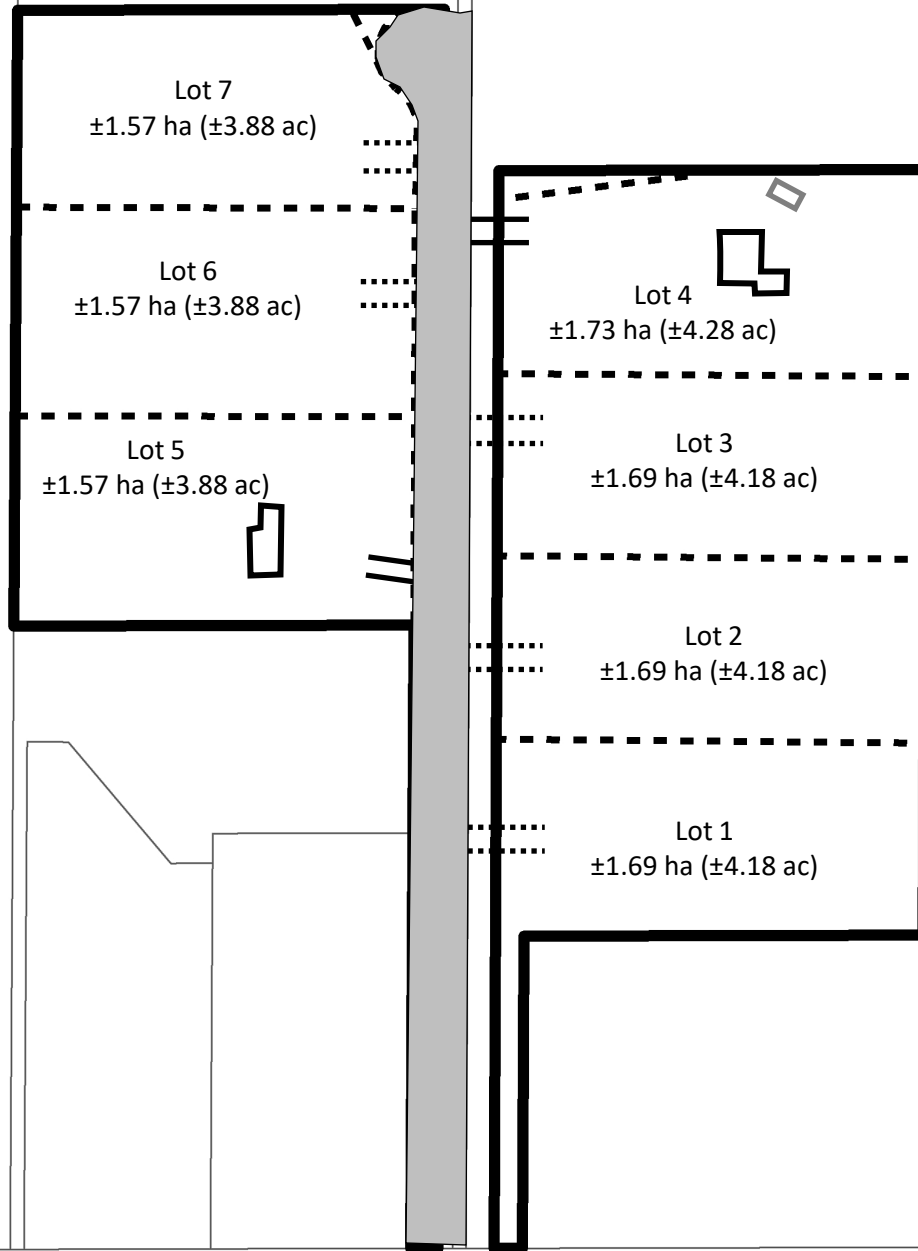
To create three ± 1.69 hectare (± 4.18 acre) parcels with a ± 1.73 hectare (± 4.28 acre) remainder, two ± 1.57 hectare (± 3.88 acre) parcels with a ± 1.57 hectare (± 3.88 acre) remainder, and to facilitate boundary adjustments to accommodate the construction of a new internal road within SW-18-26-3-W5.

Legend

Dwelling	
Building	
Water Well	
Wastewater	
Existing Approach	
New Approach	
Driveway	
Road Widening	
Road Acquisition	

Surveyor's Notes:

1. Parcels must meet minimum size and setback requirements of Land Use Bylaw C-8000-2020.
2. Refer to Notice of Transmittal for approval conditions related to this Tentative Plan.



TWP RD 262

