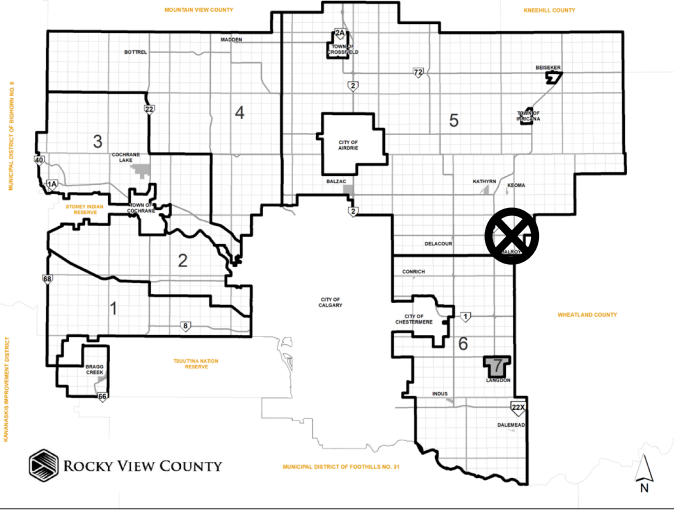


Location & Context

Subdivision Proposal

To create a ± 2.02 hectare (± 5.00 acre) parcel, leaving a ± 32.67 hectare (± 80.74 acre) remainder.

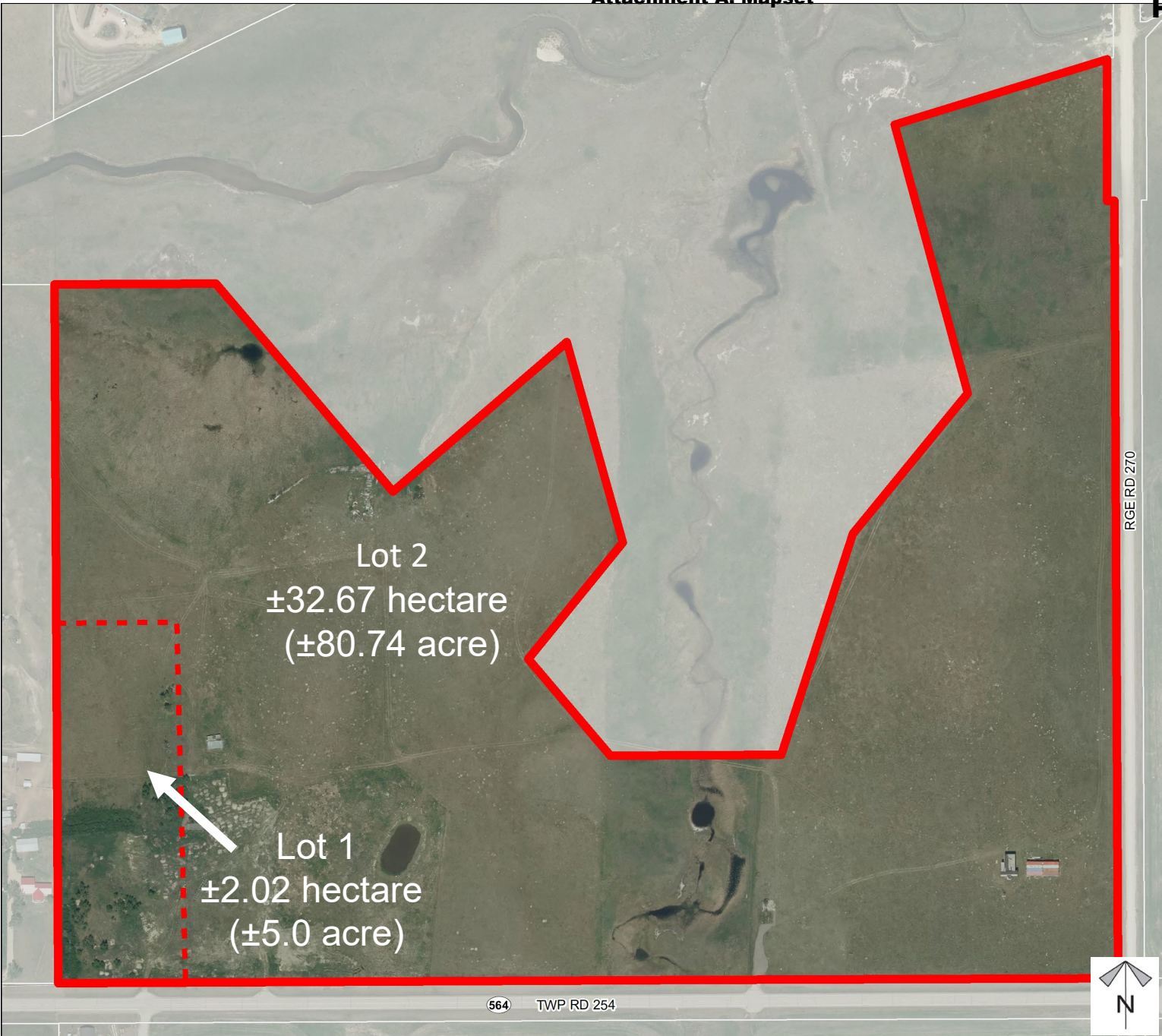


Division: 5
Roll: 05225001
File: PL20230152
Printed: December 18, 2023
Legal: A portion of SE-25-25-27-W4M

Development Proposal

Subdivision Proposal

To create a ± 2.02 hectare
(± 5.00 acre) parcel,
leaving a ± 32.67 hectare
(± 80.74 acre) remainder.



Lot 2
 ± 32.67 hectare
(± 80.74 acre)

Lot 1
 ± 2.02 hectare
(± 5.0 acre)

564 TWP RD 254

RGE RD 270

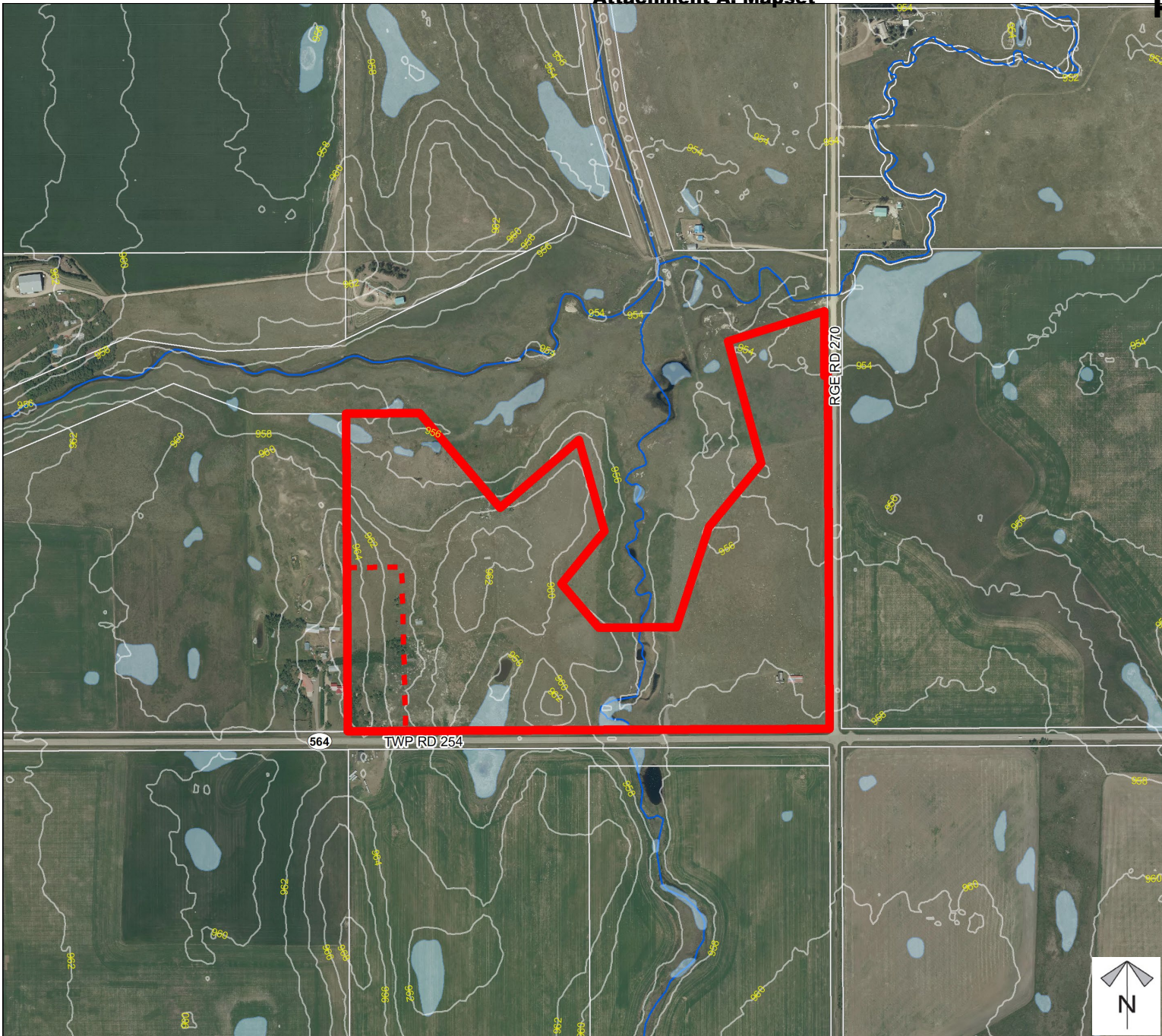


Division: 5
Roll: 05225001
File: PL20230152
Printed: December 18, 2023
Legal: A portion of SE-25-25-27-W4M

Environmental

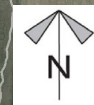
Subdivision Proposal

To create a ± 2.02 hectare (± 5.00 acre) parcel, leaving a ± 32.67 hectare (± 80.74 acre) remainder.



-  Subject Lands
-  Contour - 2 meters
-  Riparian Setbacks
-  Alberta Wetland Inventory
-  Surface Water

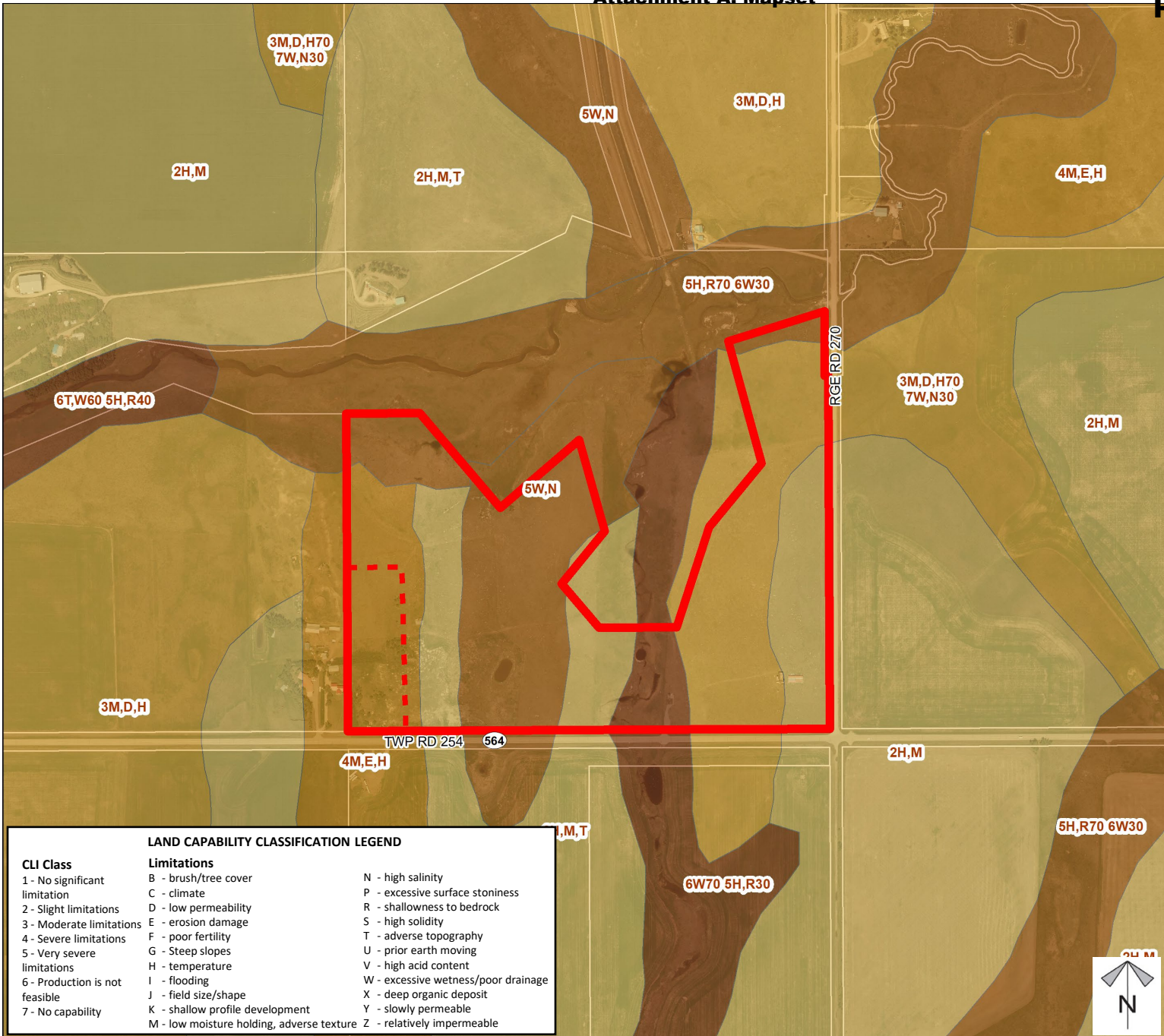
Division: 5
Roll: 05225001
File: PL20230152
Printed: December 18, 2023
Legal: A portion of SE-25-25-27-W4M



Soil Classifications

Subdivision Proposal

To create a ± 2.02 hectare (± 5.00 acre) parcel, leaving a ± 32.67 hectare (± 80.74 acre) remainder.



LAND CAPABILITY CLASSIFICATION LEGEND

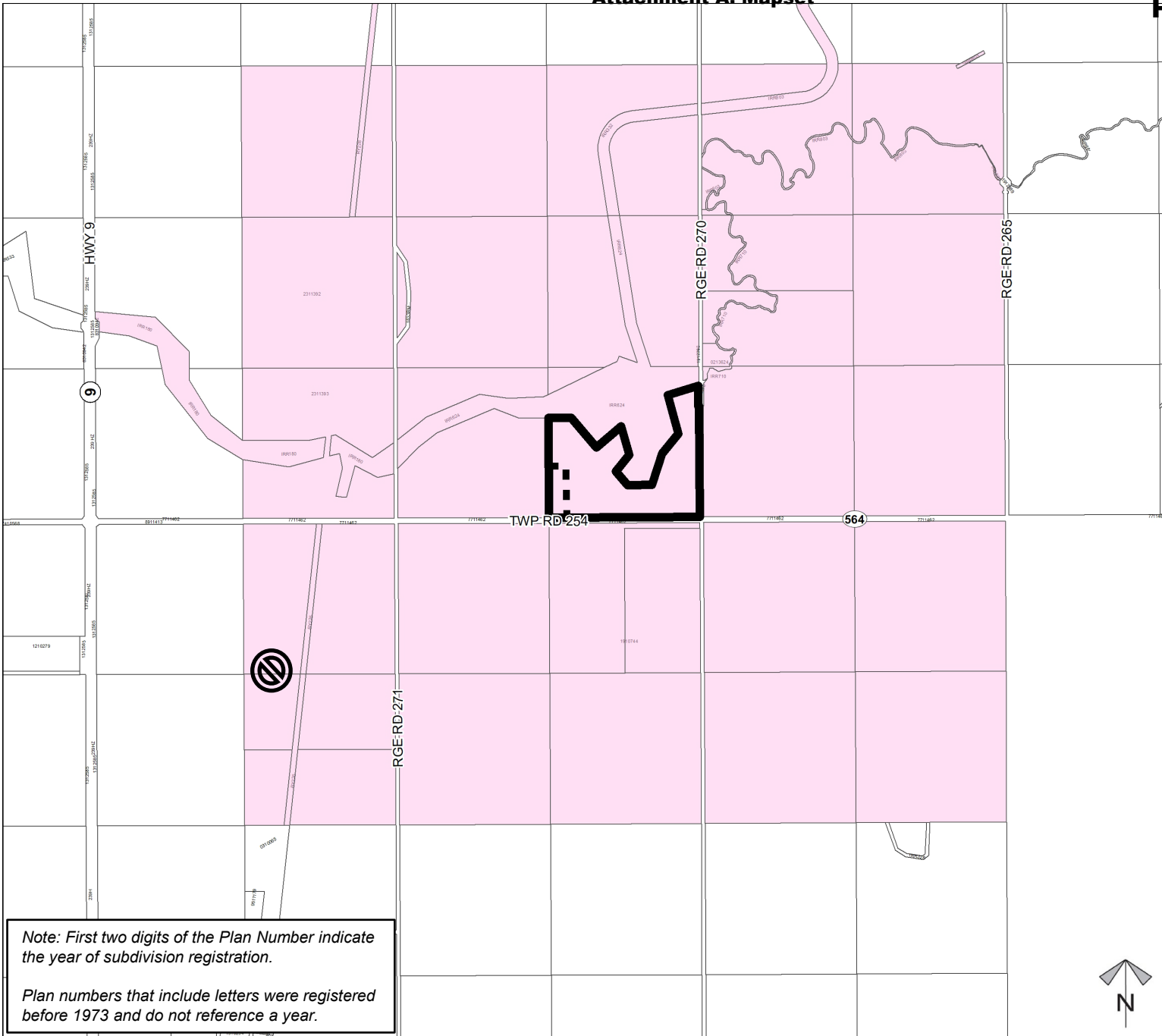
CLI Class	Limitations	
1 - No significant limitation	B - brush/tree cover	N - high salinity
2 - Slight limitations	C - climate	P - excessive surface stoniness
3 - Moderate limitations	D - low permeability	R - shallowness to bedrock
4 - Severe limitations	E - erosion damage	S - high solidity
5 - Very severe limitations	F - poor fertility	T - adverse topography
	G - Steep slopes	U - prior earth moving
	H - temperature	V - high acid content
6 - Production is not feasible	I - flooding	W - excessive wetness/poor drainage
7 - No capability	J - field size/shape	X - deep organic deposit
	K - shallow profile development	Y - slowly permeable
	M - low moisture holding, adverse texture	Z - relatively impermeable

Division: 5
Roll: 05225001
File: PL20230152
Printed: December 18, 2023
Legal: A portion of SE-25-25-27-W4M

Landowner Circulation Area

Subdivision Proposal

To create a ± 2.02 hectare
(± 5.00 acre) parcel,
leaving a ± 32.67 hectare
(± 80.74 acre) remainder.



Note: First two digits of the Plan Number indicate the year of subdivision registration.

Plan numbers that include letters were registered before 1973 and do not reference a year.

Legend

Support



Not Support



Division: 5
Roll: 05225001
File: PL20230152
Printed: December 18, 2023
Legal: A portion of SE-25-25-27-W4M