

Location & Context

To redesignate the subject lands from Residential, Rural Residential (R-RUR) District to Residential, Country Residential (R-CRD) District to accommodate future subdivision of a ± 0.87 hectare (±2.14 acre) parcel with a ± 0.87 hectare (± 2.14 acre) remainder.

Division: 4
Roll: 06701012
File: PL20240113
Printed: 6/11/2024
Legal: A portion of SE-01-26-03-W05M



Development Proposal

To redesignate the subject lands from Residential, Rural Residential (R-RUR) District to Residential, Country Residential (R-CRD) District to accommodate future subdivision of a ± 0.87 hectare (± 2.14 acre) parcel with a ± 0.87 hectare (± 2.14 acre) remainder.

Division: 4
Roll: 06701012
File: PL20240113
Printed: 6/14/2024
Legal: A portion of
SE-01-26-03-W05M



Environmental

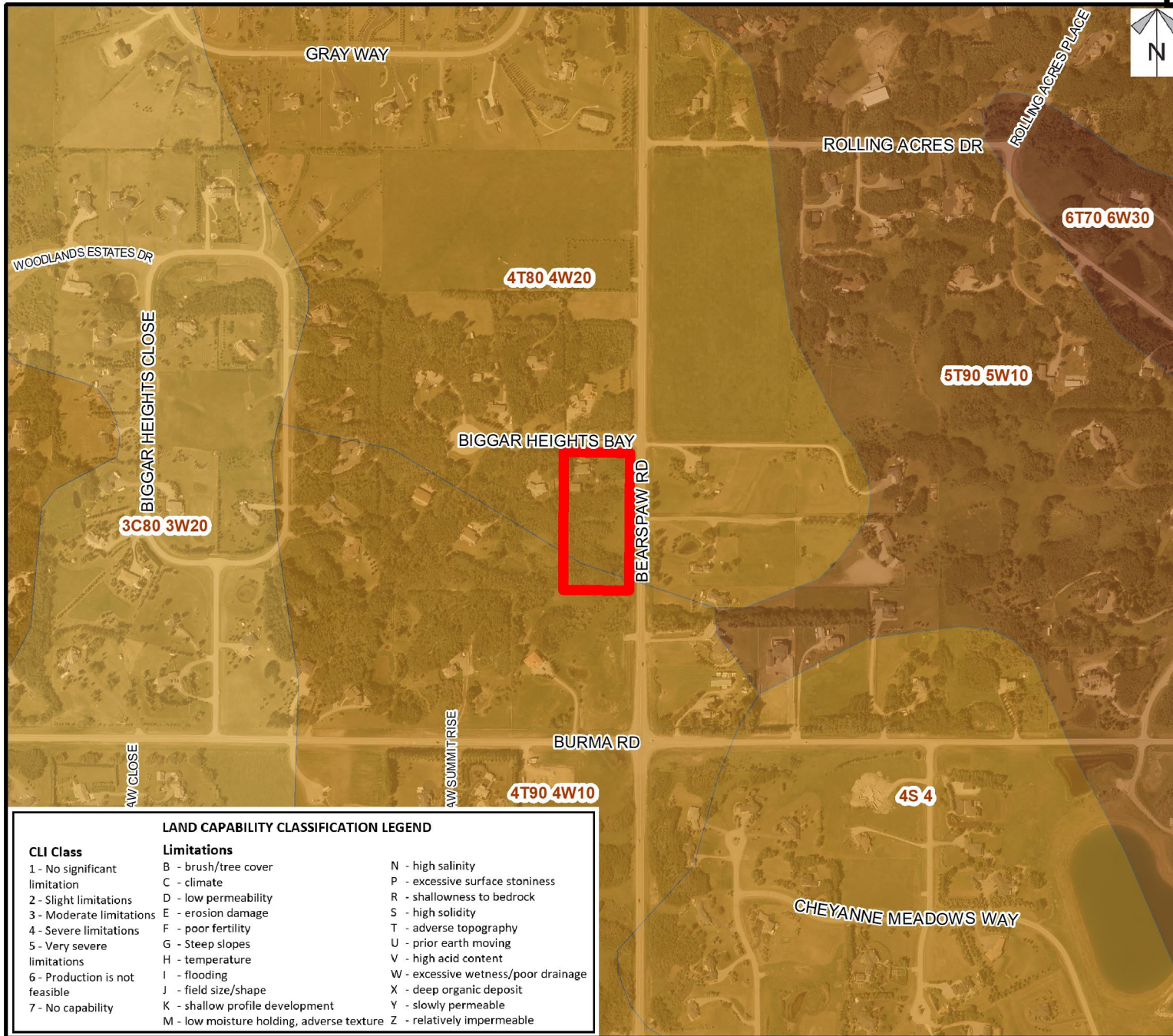
To redesignate the subject lands from Residential, Rural Residential (R-RUR) District to Residential, Country Residential (R-CRD) District to accommodate future subdivision of a ± 0.87 hectare (±2.14 acre) parcel with a ± 0.87 hectare (± 2.14 acre) remainder.



Legend

-  Subject Lands
-  Contour - 2 meters
-  Riparian Setbacks
-  Alberta Wetland Inventory
-  Surface Water

Division: 4
Roll: 06701012
File: PL20240113
Printed: 6/11/2024
Legal: A portion of SE-01-26-03-W05M



Soil Classifications

To redesignate the subject lands from Residential, Rural Residential (R-RUR) District to Residential, Country Residential (R-CRD) District to accommodate future subdivision of a ± 0.87 hectare (±2.14 acre) parcel with a ± 0.87 hectare (± 2.14 acre) remainder.

LAND CAPABILITY CLASSIFICATION LEGEND		
CLI Class	Limitations	
1 - No significant limitation	B - brush/tree cover	N - high salinity
2 - Slight limitations	C - climate	P - excessive surface stoniness
3 - Moderate limitations	D - low permeability	R - shallowness to bedrock
4 - Severe limitations	E - erosion damage	S - high solidity
5 - Very severe limitations	F - poor fertility	T - adverse topography
6 - Production is not feasible	G - Steep slopes	U - prior earth moving
7 - No capability	H - temperature	V - high acid content
	I - flooding	W - excessive wetness/poor drainage
	J - field size/shape	X - deep organic deposit
	K - shallow profile development	Y - slowly permeable
	M - low moisture holding, adverse texture	Z - relatively impermeable

Division: 4
 Roll: 06701012
 File: PL20240113
 Printed: 6/11/2024
 Legal: A portion of SE-01-26-03-W05M



Landowner Circulation Area

To redesignate the subject lands from Residential, Rural Residential (R-RUR) District to Residential, Country Residential (R-CRD) District to accommodate future subdivision of a ± 0.87 hectare (±2.14 acre) parcel with a ± 0.87 hectare (± 2.14 acre) remainder.

Legend

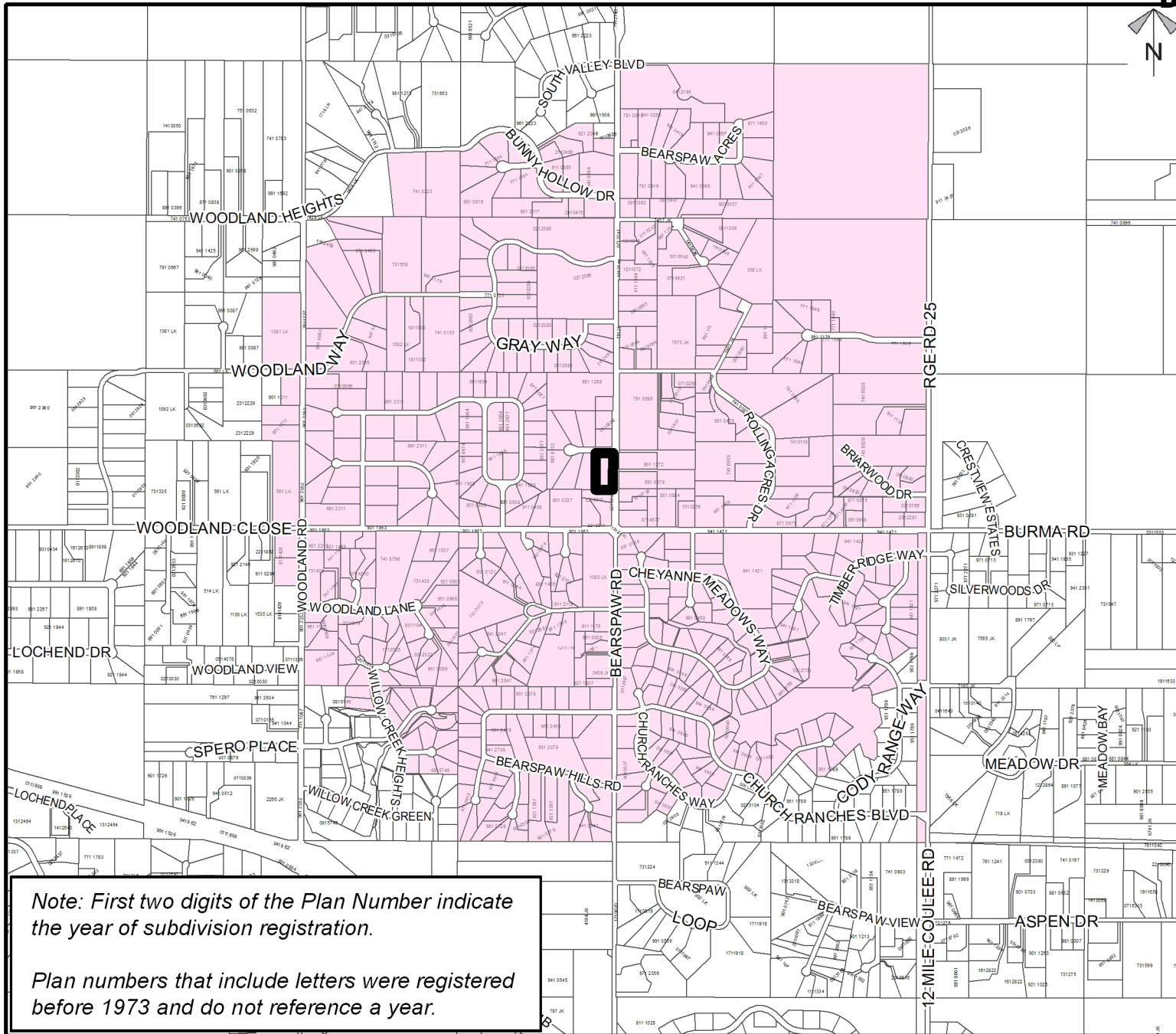
Support



Not Support



Division: 4
Roll: 06701012
File: PL20240113
Printed: 6/11/2024
Legal: A portion of
SE-01-26-03-W05M



Note: First two digits of the Plan Number indicate the year of subdivision registration.

Plan numbers that include letters were registered before 1973 and do not reference a year.