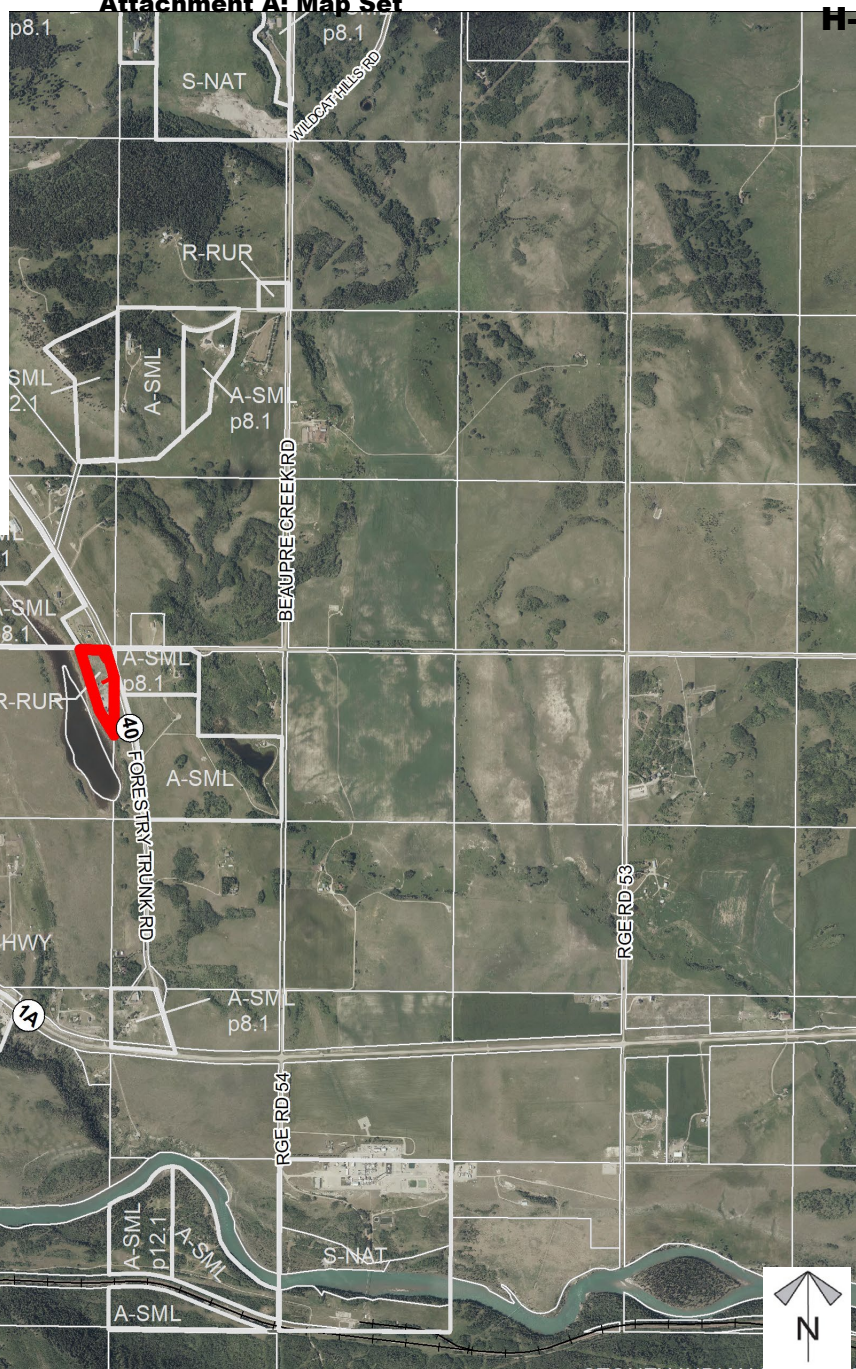
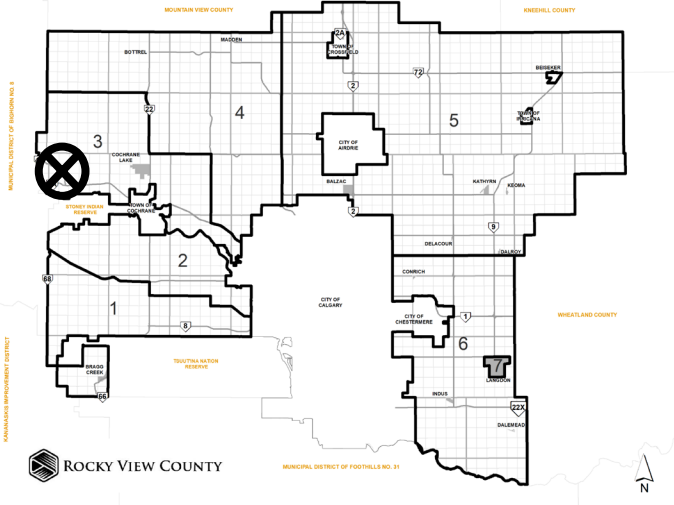


Location
& Context

Subdivision Proposal

To create a ± 1.60 hectare (3.95 acre) parcel with a ± 1.98 hectare (4.88 acre) remainder.

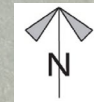


Division: 3
Roll: 06920009
File: PL20230112
Printed: Aug 25, 2023
Legal: A portion of NW-20-26-5-W5M

Development Proposal

Subdivision Proposal

To create a ± 1.60 hectare (3.95 acre) parcel with a ± 1.98 hectare (4.88 acre) remainder.

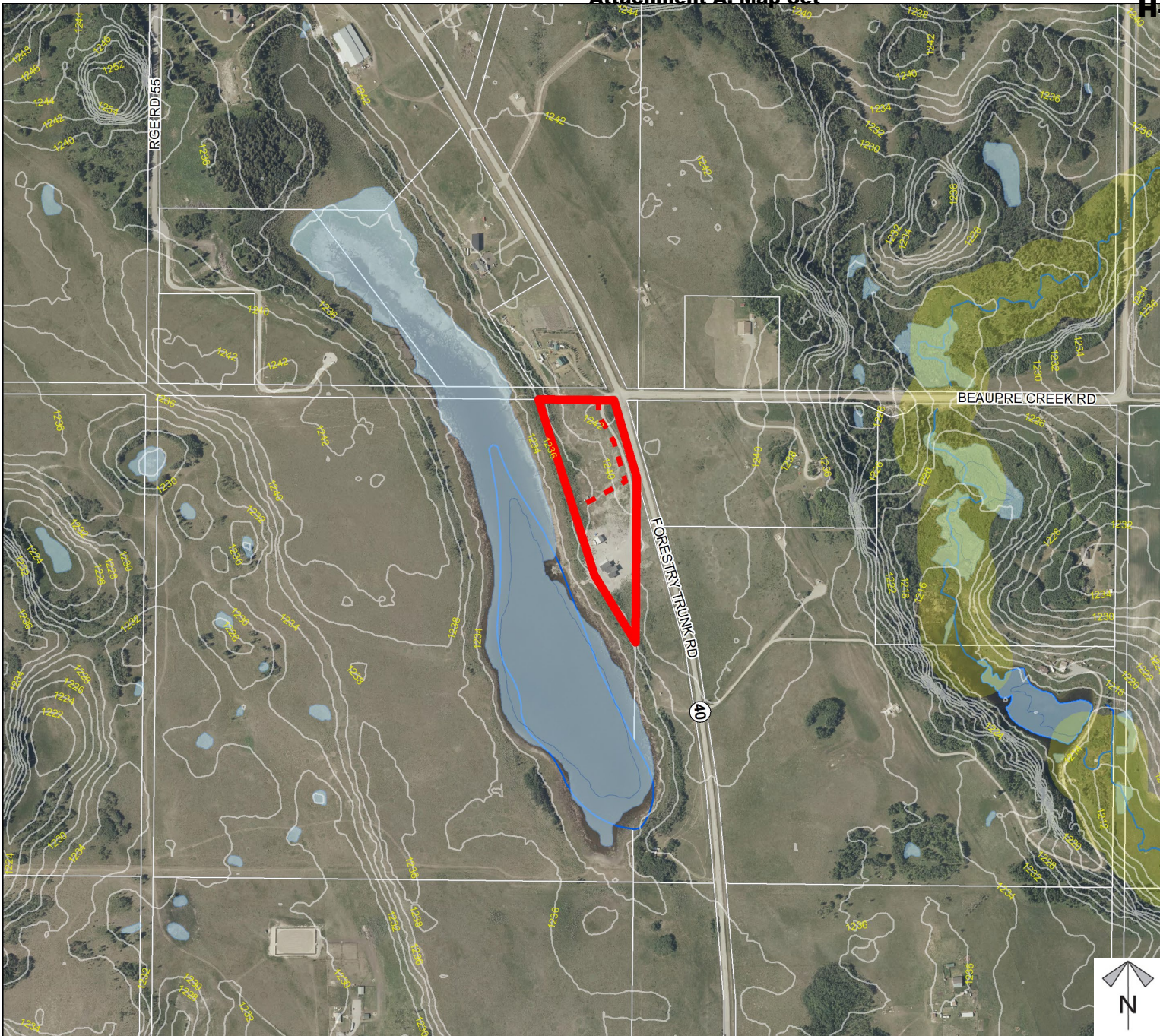


Division: 3
Roll: 06920009
File: PL20230112
Printed: Aug 25, 2023
Legal: A portion of NW-20-26-5-W5M

Environmental

Subdivision Proposal

To create a ± 1.60 hectare (3.95 acre) parcel with a ± 1.98 hectare (4.88 acre) remainder.



- Subject Lands
- Contour - 2 meters
- Riparian Setbacks
- Alberta Wetland Inventory
- Surface Water

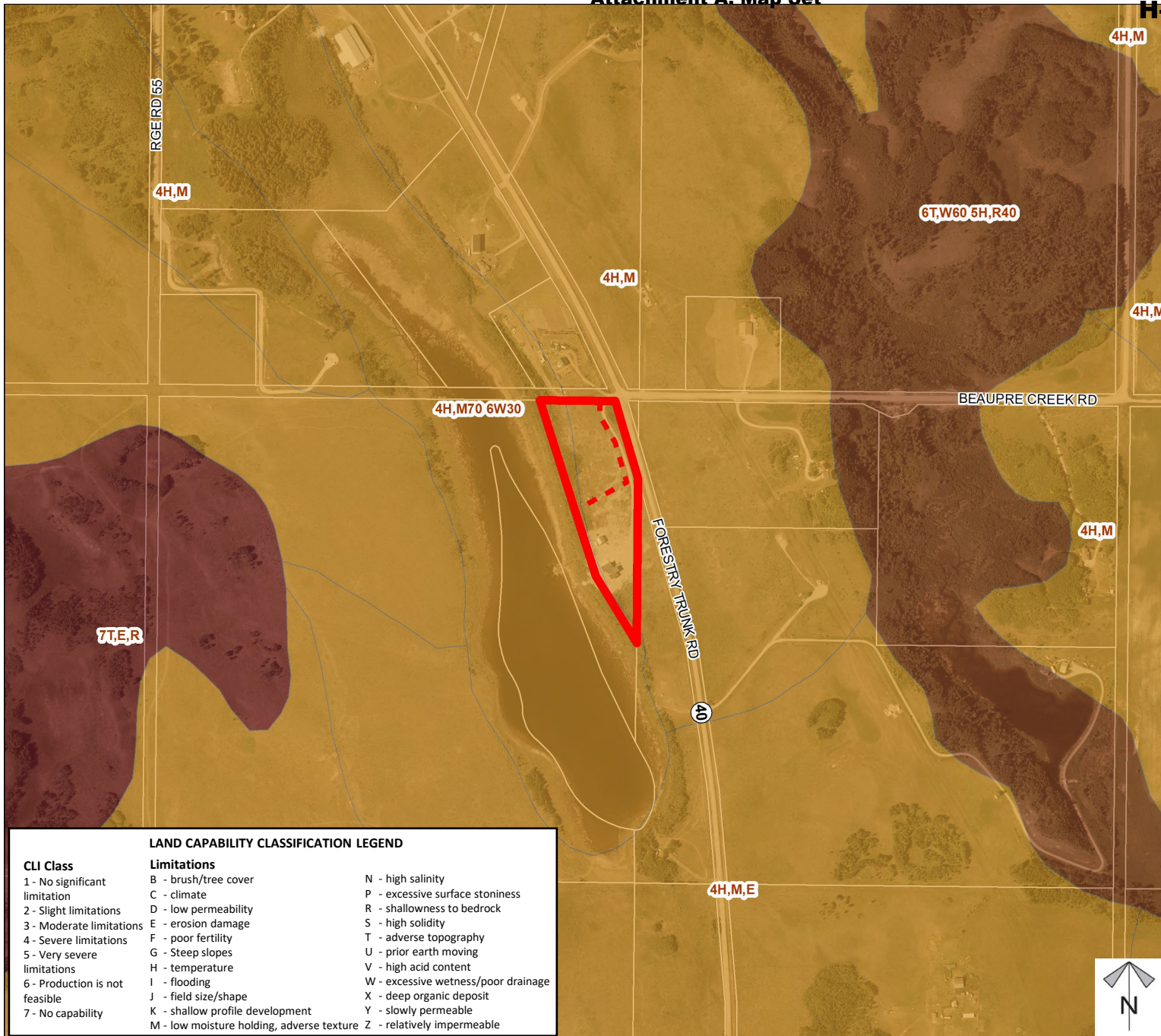


Division: 3
Roll: 06920009
File: PL20230112
Printed: Aug 25, 2023
Legal: A portion of NW-20-26-5-W5M

Soil Classifications

Subdivision Proposal

To create a ± 1.60 hectare (3.95 acre) parcel with a ± 1.98 hectare (4.88 acre) remainder.



LAND CAPABILITY CLASSIFICATION LEGEND

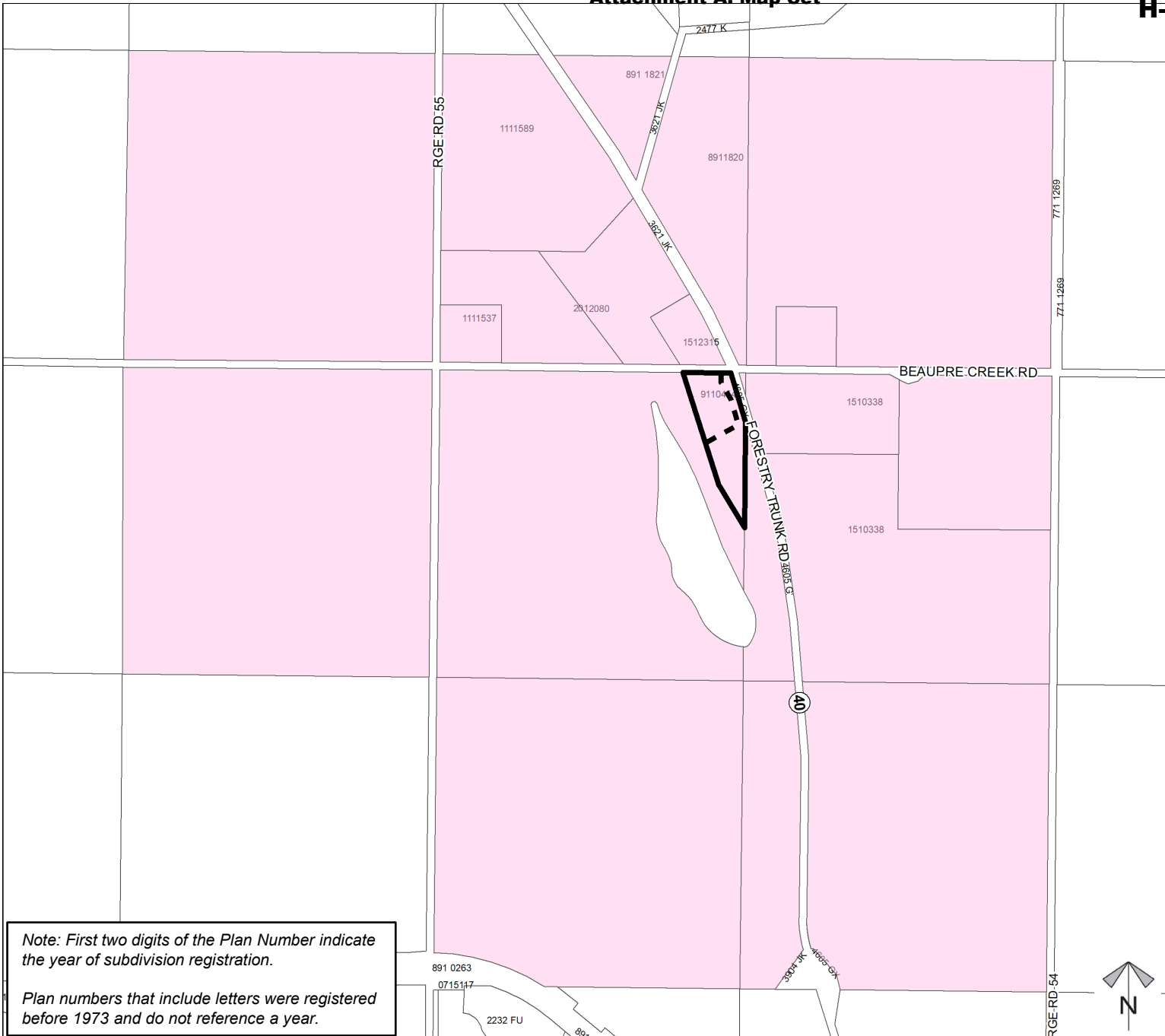
CLI Class	Limitations	
1 - No significant limitation	B - brush/tree cover	N - high salinity
2 - Slight limitations	C - climate	P - excessive surface stoniness
3 - Moderate limitations	D - low permeability	R - shallowness to bedrock
4 - Severe limitations	E - erosion damage	S - high solidity
5 - Very severe limitations	F - poor fertility	T - adverse topography
6 - Production is not feasible	G - Steep slopes	U - prior earth moving
7 - No capability	H - temperature	V - high acid content
	I - flooding	W - excessive wetness/poor drainage
	J - field size/shape	X - deep organic deposit
	K - shallow profile development	Y - slowly permeable
	M - low moisture holding, adverse texture	Z - relatively impermeable

Division: 3
 Roll: 06920009
 File: PL20230112
 Printed: Aug 25, 2023
 Legal: A portion of NW-20-26-5-W5M



Landowner Circulation Area

Subdivision Proposal

To create a ± 1.60 hectare (3.95 acre) parcel with a ± 1.98 hectare (4.88 acre) remainder.



Legend

- Support 
- Not Support 

Note: First two digits of the Plan Number indicate the year of subdivision registration.

Plan numbers that include letters were registered before 1973 and do not reference a year.

Division: 3
 Roll: 06920009
 File: PL20230112
 Printed: Aug 25, 2023
 Legal: A portion of NW-20-26-5-W5M

Tentative Plan

Subdivision Proposal

To create a ± 1.60 hectare (3.95 acre) parcel with a ± 1.98 hectare (4.88 acre) remainder.

Legend

Dwelling	
Building	
Water Well	
Wastewater	
Existing Approach	
New Approach	
Driveway	
Road Widening	
Road Acquisition	

Surveyor's Notes:

1. Parcels must meet minimum size and setback requirements of Land Use Bylaw C-8000-2020.
2. Refer to Notice of Transmittal for approval conditions related to this Tentative Plan.

Division: 3
 Roll: 06920009
 File: PL20230112
 Printed: Aug 25, 2023
 Legal: A portion of NW-20-26-5-W5M

