

Location & Context

General Industry, Type II, construction of an office & welding building, tenancy for a welding business, outside storage of equipment, machinery and products, and overheight fencing

Division: 6
Roll: 03329054
File: PRDP20243060
Printed: 5/23/2024
Legal: A portion of NW-29-23-28-W04M



HEATHERGLEN PL



Development Proposal

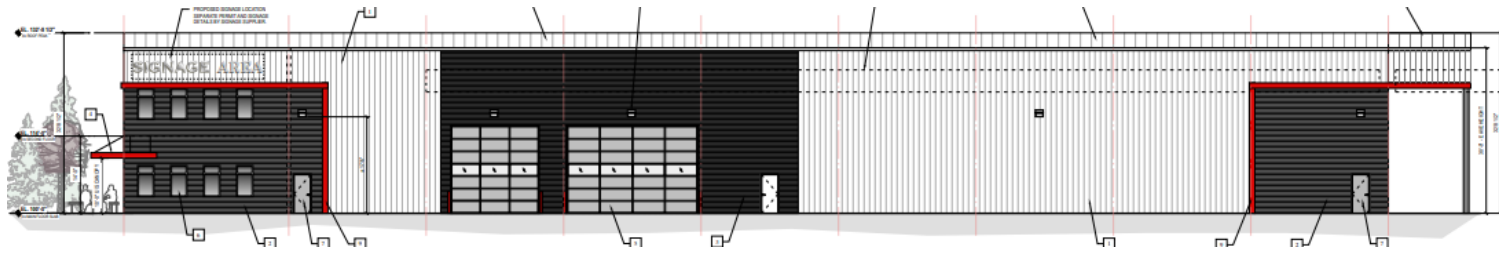
General Industry, Type II, construction of an office & welding building, tenancy for a welding business, outside storage of equipment, machinery and products, and overhead fencing

Division: 6
Roll: 03329054
File: PRDP20243060
Printed: 5/23/2024
Legal: A portion of
NW-29-23-28-W04M

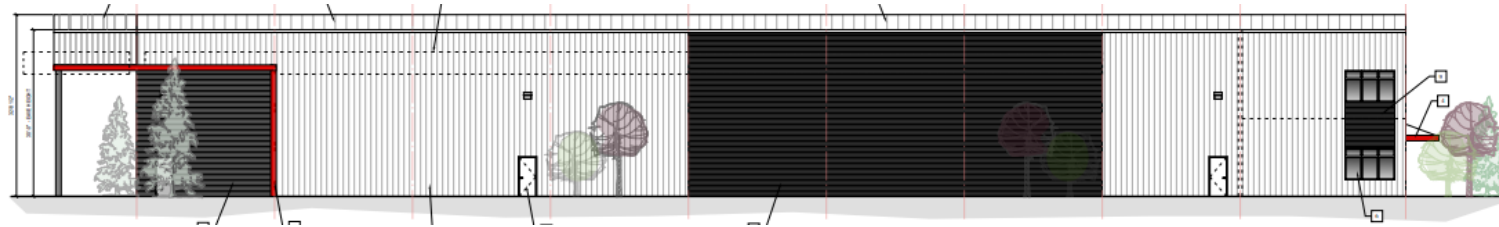


Development Proposal

General Industry, Type II, construction of an office & welding building, tenancy for a welding business, outside storage of equipment, machinery and products, and overheight fencing



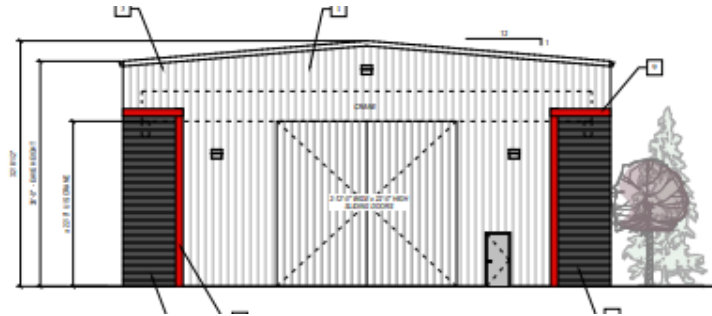
WEST ELEVATION



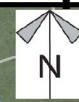
EAST ELEVATION



NORTH ELEVATION



SOUTH ELEVATION



Environmental

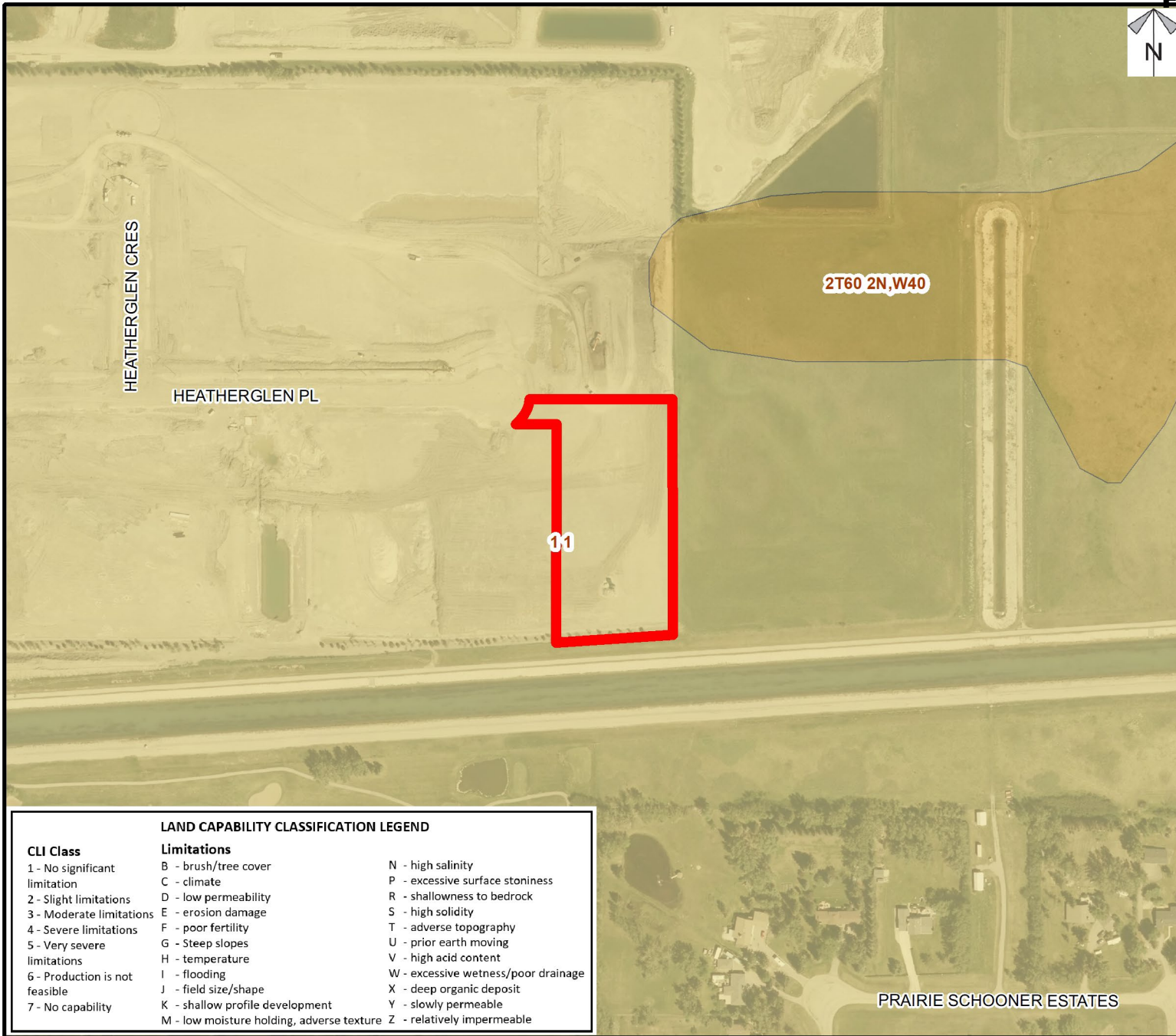
General Industry, Type II, construction of an office & welding building, tenancy for a welding business, outside storage of equipment, machinery and products, and overhead fencing

Legend

-  Subject Lands
-  Contour - 2 meters
-  Riparian Setbacks
-  Alberta Wetland Inventory
-  Surface Water

Division: 6
Roll: 03329054
File: PRDP20243060
Printed: 5/23/2024
Legal: A portion of
NW-29-23-28-W04M

PRAIRIE SCHOONER ESTATES



Soil Classifications

General Industry, Type II, construction of an office & welding building, tenancy for a welding business, outside storage of equipment, machinery and products, and overhead fencing

LAND CAPABILITY CLASSIFICATION LEGEND

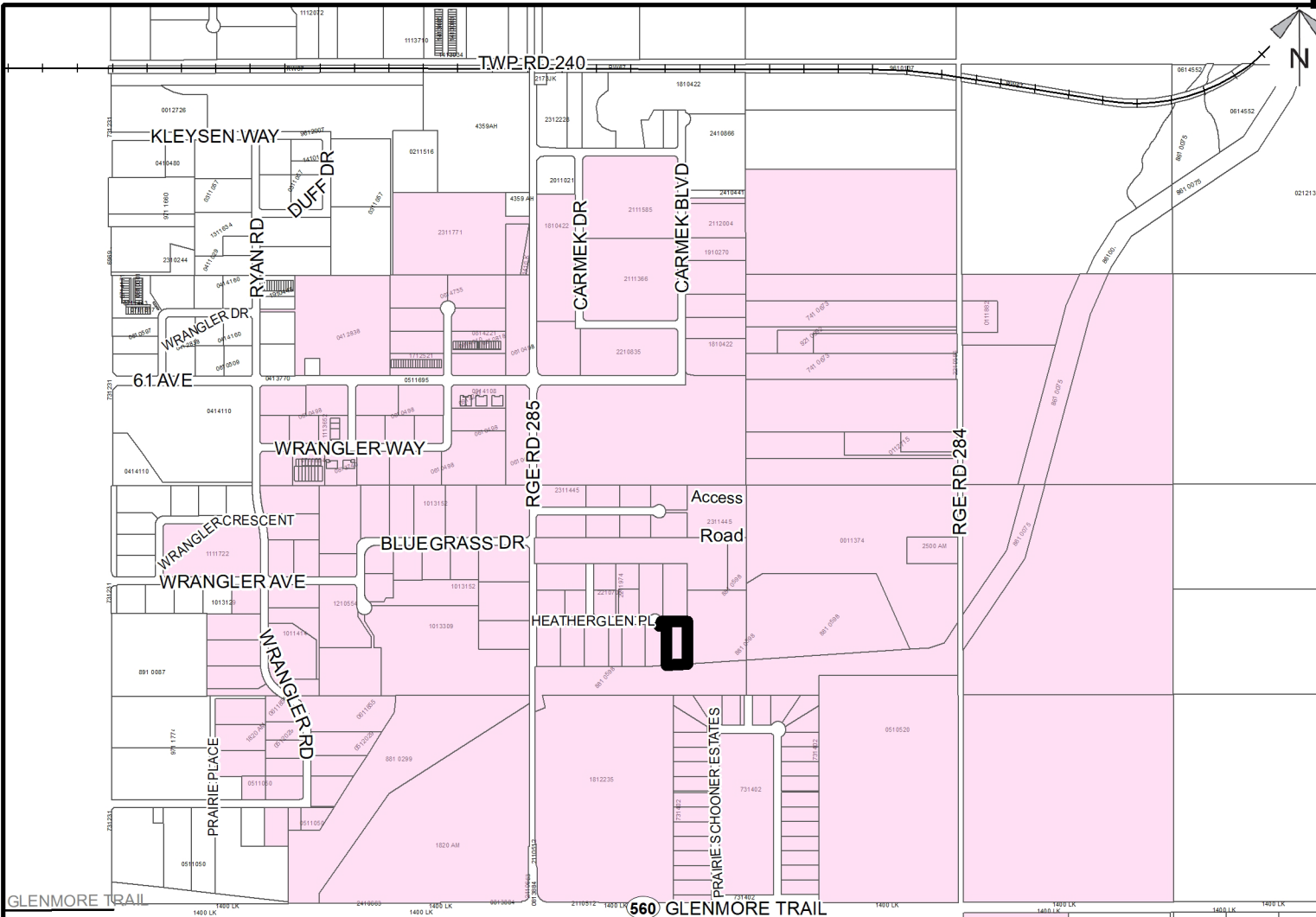
CLI Class	Limitations	
1 - No significant limitation	B - brush/tree cover	N - high salinity
2 - Slight limitations	C - climate	P - excessive surface stoniness
3 - Moderate limitations	D - low permeability	R - shallowness to bedrock
4 - Severe limitations	E - erosion damage	S - high solidity
5 - Very severe limitations	F - poor fertility	T - adverse topography
6 - Production is not feasible	G - Steep slopes	U - prior earth moving
7 - No capability	H - temperature	V - high acid content
	I - flooding	W - excessive wetness/poor drainage
	J - field size/shape	X - deep organic deposit
	K - shallow profile development	Y - slowly permeable
	M - low moisture holding, adverse texture	Z - relatively impermeable

Division: 6
Roll: 03329054
File: PRDP20243060
Printed: 5/23/2024
Legal: A portion of NW-29-23-28-W04M



Landowner Circulation Area

General Industry, Type II, construction of an office & welding building, tenancy for a welding business, outside storage of equipment, machinery and products, and overheight fencing



Legend

Support



Not Support



Note: First two digits of the Plan Number indicate the year of subdivision registration.

Plan numbers that include letters were registered before 1973 and do not reference a year.

Division: 6
Roll: 03329054
File: PRDP20243060
Printed: 5/23/2024
Legal: A portion of NW-29-23-28-W04M