



# BYLAW C-8524-2024

A bylaw of Rocky View County, in the Province of Alberta, to amend the Watermark at Bears paw Conceptual Scheme (Bylaw C-6798-2009).

The Council of Rocky View County enacts as follows:

## Title

1 This bylaw may be cited as *Bylaw C-8524-2024*.

## Definitions

2 Words in this Bylaw have the same meaning as those set out in the *Land Use Bylaw* and *Municipal Government Act* except for the definitions provided below:

- (1) **“Council”** means the duly elected Council of Rocky View County;
- (2) **“Land Use Bylaw”** means Rocky View County Bylaw C-8000-2020, being the *Land Use Bylaw*, as amended or replaced from time to time;
- (3) **“Municipal Government Act”** means the *Municipal Government Act*, RSA 2000, c M-26, as amended or replaced from time to time; and
- (4) **“Rocky View County”** means Rocky View County as a municipal corporation and the geographical area within its jurisdictional boundaries, as the context requires.

## Effect

3 THAT the Watermark at Bears paw Conceptual Scheme (Bylaw C-6798-2009) be amended to insert “Appendix 9: Watermark Conceptual Scheme Amendment” affecting Lot 4, Block 1, Plan 1712232 within SE-18-25-02-W05M as defined in Schedule ‘A’ attached to and forming part of this Bylaw.

4 THAT the table of contents in the the Watermark at Bears paw Conceptual Scheme (Bylaw C-6798-2009) be amended to include “Appendix 9: Watermark Conceptual Scheme Amendment”.

## Effective Date

5 Bylaw C-8524-2024 is passed and comes into full force and effect when it receives third reading and is signed in accordance with the *Municipal Government Act*.



READ A FIRST TIME this \_\_\_\_\_ day of \_\_\_\_\_, 2024

READ A SECOND TIME this \_\_\_\_\_ day of \_\_\_\_\_, 2024

UNANIMOUS PERMISSION FOR THIRD READING this \_\_\_\_\_ day of \_\_\_\_\_, 2024

READ A THIRD AND FINAL TIME this \_\_\_\_\_ day of \_\_\_\_\_, 2024

\_\_\_\_\_  
Reeve

\_\_\_\_\_  
Chief Administrative Officer

\_\_\_\_\_  
Date Bylaw Signed



# Dankars

LEGACY PROJECT

A SENIORS-ORIENTED  
RESIDENTIAL NEIGHBOURHOOD

---

Appendix 9: Watermark  
Conceptual Scheme  
Amendment

AUG 20  
24



## DAMKAR LANDS

A Seniors Oriented  
Residential  
Neighbourhood

---



A Legacy Project in Bearspaw



Trico Homes



# Dankars

LEGACY PROJECT

<b>1</b>	<b>MOTIVATION &amp; RATIONALE</b>	
1.1	HISTORY	1
<b>2</b>	<b>DEVELOPMENT OBJECTIVES &amp; GUIDING PRINCIPLES</b>	2
2.1	DEVELOPMENT OBJECTIVES	2
2.2	GUIDING PRINCIPLES	2
<b>3</b>	<b>COMMUNICATIONS AND ENGAGEMENT</b>	4
3.1	STRATEGIC COMMUNICATIONS AND ENGAGEMENT APPROACH	4
3.2	OBJECTIVES	5
3.3	C&E TACTICAL APPROACH	5
<b>4.</b>	<b>PLANNING AND POLICY CONTEXT</b>	6
4.1	ROCKY VIEW/CALGARY INTERMUNICIPAL DEVELOPMENT PLAN	6
4.2	THE COUNTY PLAN, MUNICIPAL DEVELOPMENT PLAN (BYLAW C-7280-2013)	6
4.3	BEARSPAW AREA STRUCTURE PLAN (BYLAW C-5177-2000)	7
4.4	WATERMARK CONCEPTUAL SCHEME (C-6798 – 2009)	7
<b>5.</b>	<b>DEVELOPMENT PLAN CONTEXT</b>	10
5.1	REGIONAL CONTEXT	10
5.2	LEGAL DESCRIPTION AND OWNERSHIP	10
5.3	LOCAL CONTEXT	10

<b>6. EXISTING SITE CONDITIONS</b>	12	<b>10. IMPLEMENTATION</b>	36
6.1 EXISTING LAND USE BYLAW (C-4841-97)	12	10.1 CMRB GROWTH PLAN	36
6.2 TOPOGRAPHY	14	10.2 DESIGN STANDARDS	38
6.3 PRELIMINARY GRADING	14	10.3 PROPOSED LAND USE AMENDMENT	38
6.4 GEOTECHNICAL EVALUATION	14	10.4 WEED MANAGEMENT PLAN	38
6.5 TRANSPORTATION NETWORK AND ACCESS	16	10.5 CONSTRUCTION MANAGEMENT PLAN	38
6.6 PIPELINE RIGHT-OF-WAY	16	<b>11. APPENDIX</b>	40
6.7 ARCHEOLOGICAL & HISTORICAL RESOURCES	16	<b>FIGURES</b>	
6.8 ENVIRONMENTAL SITE ASSESSMENT	16	1 REGIONAL LOCATION	3
<b>7. DEVELOPMENT CONCEPT</b>	20	2 WATERMARK CONCEPTUAL SCHEME	9
7.1 RESIDENTIAL DENSITY	25	3 LEGAL AND OWNERSHIP MAP	11
7.2 OPEN SPACE	26	4 LOCAL CONTEXT	11
<b>8. TRANSPORTATION</b>	28	5 EXISTING LAND USE	13
8.1 TRANSPORTATION NETWORK	28	6 EXISTING SITE CONDITIONS	18
<b>9. UTILITY SERVICING</b>	30	7 EXISTING TRANSPORTATION NETWORK	19
9.1 WATER SERVICING	30	8 DEVELOPMENT CONCEPT	21
9.2 SANITARY SERVICING	32	8A DEVELOPMENT CONCEPT AND ADJACENT	22
9.3 STORMWATER SERVICING	33	9 VILLA PRECEDENTS	23
9.4 SHALLOW UTILITIES	34	10 OPEN SPACE NETWORK	26
9.5 SITE GRADING	34	11 INTERNAL OPEN SPACE	27
9.6 COMMUNITY INFRASTRUCTURE	35	12 PRELIMINARY UTILITY SERVICING	31
		13 CMRB FIGURES	39
		14 PROPOSED LAND USE	
		<b>TABLES</b>	
		1 BREAKDOWN OF RESIDENTIAL DENSITY	25



1

## MOTIVATION & RATIONALE

This Conceptual Scheme Amendment has been prepared by B&A Planning Group, with a team of technical experts, on behalf of an ownership group led by Trico Developments (1990) Ltd. in support of a Land Use Redesignation and attendant Area Structure Plan (ASP) amendment.

This Conceptual Scheme amendment relates to a ±12.3 ac (5 ha) parcel legally described as Lot 4, Block 1, Plan 171 2232 located directly west of 12 Mile Coulee Road, approximately 1 ½ mile south of Highway 1A (hereafter known as the “Plan Area”). This planning framework, proposed as Appendix 9, is intended to complement and add to the existing policies in place for the Plan Area as shown within the Watermark Conceptual Scheme.

The Plan Area is in Rocky View County (RVC), in an area of Bearspaw that has recently experienced significant development activity. Adopted in 2009, the Watermark Conceptual Scheme contemplates a fully serviced, master-planned residential community with ± 600 homes on ± 300 ac. The development is provided with core services by the Rocky View County (formerly Blazer Estates Water System Ltd.), the Bearspaw Wastewater Treatment Plant and an integrated stormwater management system within the site.

Trico's development concept proposes a seniors oriented residential community, which will complete the final component of the vision established by the Watermark Conceptual Scheme and the Damkar Family. As part of the sale of the Watermark lands to the developer of the Watermark community, the original owners (Ernie and Iris Damkar) directed that the NE corner of the Plan Area should accommodate a church and a seniors-oriented residential project. The first phase of this vision was realized via approval of the Centre Street Church Northwest Campus and ten (10) residential lots adjacent to Spyglass Way. Implementation of the second phase of the Damkar's vision, the seniors-oriented residential community, is the subject of this amendment.

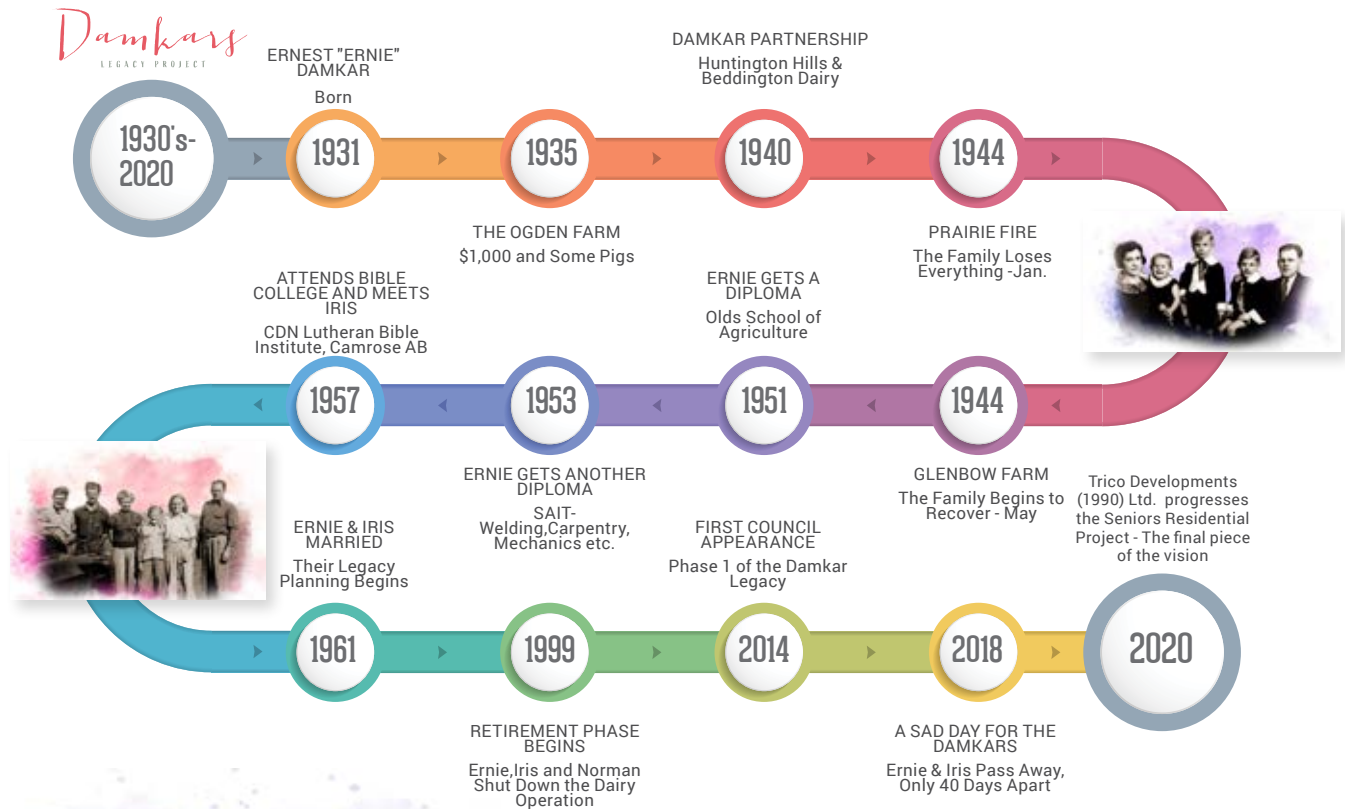


## 1.1 HISTORY

The Damkar family has a long history in the Calgary area, particularly the late Ernie and Iris, whose dream it was to develop their Bears paw homestead to create two projects: (1) the Centre Street Church Northwest Campus and; (2) a seniors-oriented residential neighbourhood. With the construction of the church near completion, the seniors-oriented residential project is the final step in fulfilling the Damkar's dream.

Ernie and Iris, along with Ernie's brother Norman, ran a family-inherited dairy farm for many years in Bears paw. Before their passing, Ernie and Iris willed their land to create two legacy projects, a church and a senior-oriented residential project. Ernie and Iris envisioned a seniors residential project to be a place where local aging populations can enjoy their retirement in familiar surroundings together with loved ones. This residential project will provide varying levels of care to accommodate differing needs so that seniors may live comfortably and confidently. The Damkars view both the Church and residential project to be a gift to God and their community.

### Trico Developments [1990] Ltd. Progresses Seniors Residential Project



2

## DEVELOPMENT OBJECTIVES & GUIDING PRINCIPLES

2

### 2.1 DEVELOPMENT OBJECTIVES

This Appendix has been prepared in accordance with the following planning objectives:

- To establish a framework to guide the resolution of planning and development issues during the subsequent land use redesignation, subdivision and development processes.
- To highlight the development within the context of the Watermark Conceptual Scheme, the Bearspaw Area Structure Plan, the Rocky View/Calgary Intermunicipal Development Plan, the County Plan and the Calgary Metropolitan Region Growth Plan.
- To provide a policy framework that guides utility servicing and ensures an orderly extension of existing infrastructure from the Watermark Community.
- To identify an internal transportation system that accommodates full development of the site and manages peak traffic congestion, parking and queueing.
- To provide the opportunity to connect the open space system to a larger regional open space system.
- To provide transitional uses and buffers between the Watermark Community and development within the Plan Area.
- To maintain the unique and prestigious residential character of the Watermark Community with a strong visual aesthetic and adherence to the Watermark architectural and design standards.

### 2.2 GUIDING PRINCIPLES

This Appendix establishes a series of Guiding Principles intended to facilitate the development objectives associated with the Damkar family's motivation to establish a seniors-oriented residential community, north of the approved Centre Street Church Northwest Campus. Similar to the Watermark Conceptual Scheme, the development will carefully integrate the natural environment, maintain views of the Rocky Mountains, leverage its proximity to the Glenbow Ranch Provincial Park and the Haskayne Park, and the City of Calgary, while incorporating innovative and aesthetically pleasing development standards to visually enhance the broader community. The underlying principle is to provide an alternative housing option to encourage local residents to age in place.

These guiding principles are described as follows:

## 2.2.1 Facilitate Aging in Place

- Provide an appropriate form of housing that allows and encourages individuals to remain in their community throughout their life-cycle.

## 2.2.2 Maintain High Development Standards

- Standards for the development will be high-quality and in keeping with those proposed and applied in the Watermark Conceptual Scheme; and
- Appropriate architectural standards that reflect the local aesthetic.

## 2.2.3 Connect to Regional Open Space and Amenities

- Regional open space and amenities will be connected to the existing community and carried through the development.

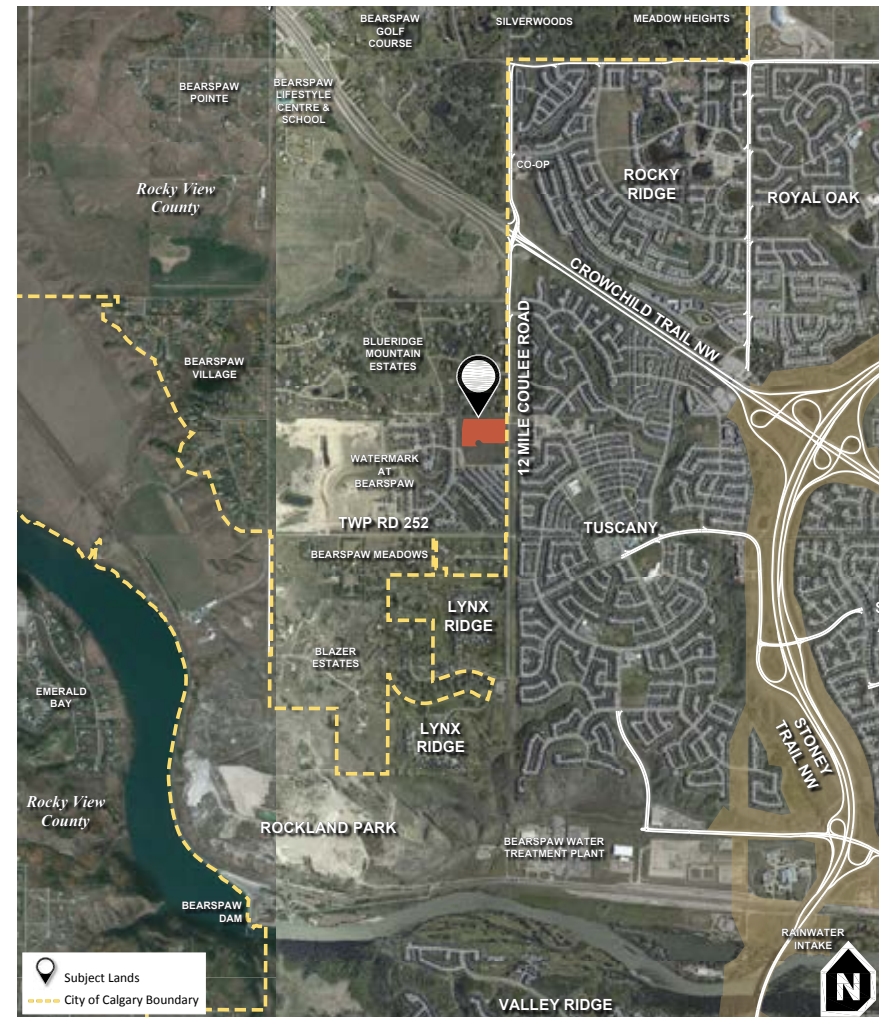
## 2.2.4 Integrate with the Watermark Community

- Leverage natural topography to preserve views for tenants and neighbours;
- Community interface will be sensitive and will seamlessly integrate with the neighbouring Watermark Community;
- Sensitively manage internal traffic with independent access points and underground parking;
- Peak traffic flows will be managed to minimize impact on the surrounding area; and
- Address servicing matters to integrate the development concept.

## 2.2.5 Facilitate an open and transparent stakeholder engagement process

- Complete a stakeholder engagement program to inform interested stakeholders regarding the project details, solicit feedback about technical issues and provide timely responses to questions, comments and ideas – **Section 3.0 Communications and Engagement** further details the strategy and process.

Figure 1 | Regional Location





## 3

COMMUNICATIONS AND  
ENGAGEMENT3.1 STRATEGIC COMMUNICATIONS  
AND ENGAGEMENT APPROACH

The International Association of Public Participation's (IAP2) public participation spectrum forms the basis of this Communications and Engagement (C&E) Strategy. It is a framework to determine the appropriate level of engagement for a project, and to facilitate the development of a comprehensive strategy. This C&E Strategy focuses on informing and consulting with stakeholders to:

- Ensure all relevant stakeholders are identified and included in the process.
- Share relevant information about the project in an objective and timely manner.
- Generate awareness about the development concept and provide multiple avenues for stakeholders to learn about and provide input.
- Keep stakeholders informed, listen, acknowledge concerns, and provide feedback on how public input influenced decisions.
- Ensure the engagement process is monitored and measured, and results are shared with all stakeholders.

The C&E Strategy will generally followed three phases as outlined in this section.



## Primary Stakeholder Outreach

The objective of Phase 1 was to provide an overview of the proposal and development concept and introduce the C&E Strategy to stakeholders, refining it based on initial feedback, as necessary. There were multiple opportunities for public input that was clearly identified and communicated prior to outreach.

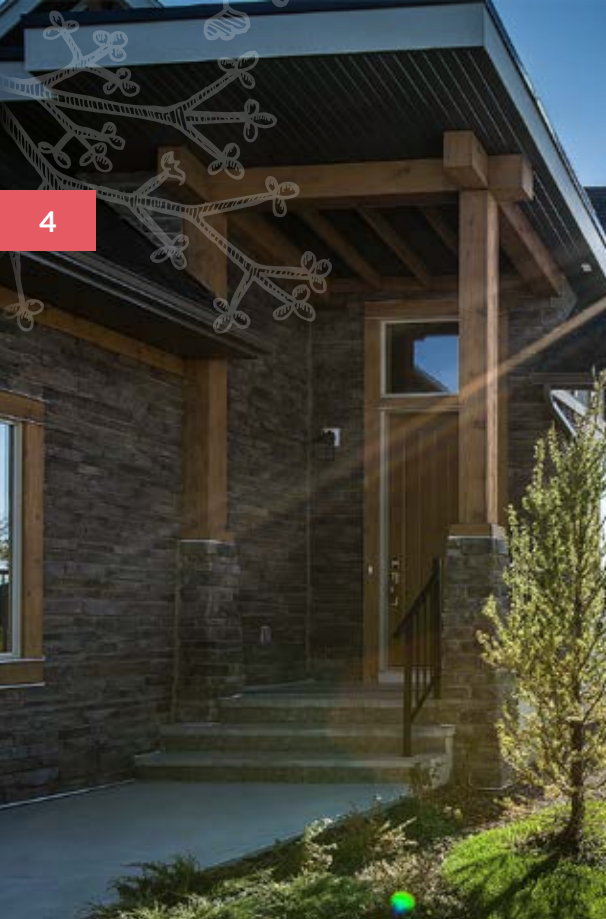


## Pre-submission Public Engagement

The objective of Phase 2 was to introduce the project to the broader public by way of an open house, respond to questions and record feedback. Input received was analyzed and published in a What We Heard Report and shared publicly. Due to the public health situation related to Covid-19 occurring at the time of this application, the open house took place in an online format using the project website. The project team was available by telephone and email throughout the planning process to respond to public questions and comments.

Post-application Submission Public  
Engagement

The objective of Phase 3 provided project updates related to the application process to the public by way of ongoing communication tactics.





## 3.2 OBJECTIVES

The central goal of the C&E Strategy is to work with and listen to those who have the potential to be impacted by the project through a meaningful and accountable process. The C&E Strategy achieved this by:

- Developing and sustaining an effective communication process with stakeholders through the distribution of consistent and timely information.
- Providing opportunities for stakeholders to offer meaningful input.
- Listening to perspectives, obtaining feedback and addressing questions, concerns and aspirations as it relates to the development concept.
- Analyzing input received and communicating to stakeholders how the input was or was not considered, addressing reasons why.

## 3.3 C&E TACTICAL APPROACH

This Conceptual Amendment proposes specific tactics to ensure all stakeholders had consistent access to accurate and timely project information and to steadfastly address stakeholder questions and concerns as they arose. The C&E Strategy included the following tactics:

- Interactive Website that includes up to date project information, policy context and engagement opportunities.
- Direct marketing to grow and enhance public understanding of the project and promoted engagement opportunities. Tactics included a mail drop, advertisements, email-blasts and temporary signage.
- Small Format telephone and virtual meetings were held with key stakeholders to share information about the project and respond to questions.
- An online engagement program ran from May 18 to June 1, 2020 to facilitate information sharing and promote dialogue about the project application. Members of the public were invited to provide feedback by way of an online survey, email or telephone. This tactic was selected based on Covid-19 protocols.
- A dedicated engagement representative lead consistent, transparent and timely communication and engagement with the public to effectively build and manage relationships.
- Comprehensive reporting and accountability including detailed stakeholder records and an engagement summary.
- Based on the feedback received and the loosened Covid-19 restrictions, the project team held an in-person public open house on November 12, 2020 (Based on a poll to ensure the community was comfortable with this approach).
- Targeted stakeholder meetings between April 30 and May 14, 2021.
- Two (2) additional Open Houses in July 2021 and May 2022.
- Ongoing Stakeholder Meetings from 2022-2024

## 4

PLANNING AND POLICY  
CONTEXT

6

#### 4.1 ROCKY VIEW/CALGARY INTER-MUNICIPAL DEVELOPMENT PLAN

The Rocky View/Calgary Intermunicipal Development Plan (IDP) guides lands use and development in the area of joint interest adjacent to the mutual boundary between both municipalities. Twelve Mile Coulee Road marks the boundary between the City of Calgary and RVC, with the City of Calgary having jurisdiction over Twelve Mile Coulee Road itself. Therefore, transportation and other matters of mutual concern including interface and land use compatibility must be discussed and addressed in a joint manner between both jurisdictions.

#### 4.2 THE COUNTY PLAN, MUNICIPAL DEVELOPMENT PLAN [BYLAW C-7280-2013]

The approved County Plan (Bylaw C-7280-2013) contains the overarching statutory policy framework and planning principles that guide development in RVC. RVC is currently reviewing the MDP to set direction around growth for the next 20 years. Preliminary documentation from the MDP review identifies Bearspaw as suitable location for this proposed seniors-oriented residential development.

The existing County Plan designates the Plan Area as Country Residential within the Bearspaw community. As such, development in this location is to conform with the policies of the Bearspaw ASP or, alternatively, propose an amendment. It also identifies the plan area as a Primary Residential Area, which supports higher density residential development where appropriate.

The County Plan also encourages alternative residential development forms that retain rural character and reduce the overall development footprint on the landscape. This plan creates a framework to develop an alternative form of housing for seniors in a logical location.

### 4.3 BEARSPAW AREA STRUCTURE PLAN [BYLAW C-5177-2000]

RVC is currently reviewing the Bearspaw Area Structure Plan (BASP) to create a comprehensive land use strategy that is current, effective, consistent with other statutory plans, and reflective of residents' vision for the future of Bearspaw. In addition, RVC highlighted notable changes to the Bearspaw community context, noting:

- Over the past 10 years, Bearspaw's population has grown by approximately 34%, from 4,803 to 6,442;
- A growing share of the County's population is nearing retirement age; and
- Throughout the County, the pace of country residential growth has slowed.

Preliminary documentation and public engagement states there is a "general desire to allow for seniors development, to encourage aging in place," and that "higher densities should be adjacent to existing developed areas and match existing development patterns." The ASP is currently under review. This Appendix 9 and proposed development concept directly align with the findings of the ongoing BASP review process.

The existing BASP, adopted in 1994, identifies the Plan Area as Country Residential, requiring a Concept Plan, within Development Priority Areas 3 in the Urban Fringe. As such, this application includes a development concept to support the Conceptual Scheme Amendment and Land Use Amendment.

### 4.4 WATERMARK CONCEPTUAL SCHEME [C-6798 - 2009]

The Watermark at Bearspaw Conceptual Scheme (CS), approved by RVC Council on July 14, 2009. As it relates to the Plan Area, the CS mandates an overall density assumed to be 1.95 units per gross acre over a total land area of 316 acres for a total of 617 residential units (including the Damkar Parcel). Any variance to this density requires an CS amendment.

In addition, the CS designates the Plan Area as the "Damkar Parcel" subjecting it to the following policies:

<b>Policy 6.7.1</b>	Future land uses may include residential and/or institutional uses. Densities beyond the equivalent of 1.95 residential units per gross acre may require an amendment to the Conceptual Scheme.
<b>Policy 6.7.2</b>	Transportation access will be from 12 Mile Coulee Road and will be shared with Sub Area 7 of the Watermark project.
<b>Policy 6.7.3</b>	Communal wastewater treatment and water services will be provided to the Damkar Parcel under certain conditions, by the Watermark project.

As such, development of the Plan Area requires an amendment to the Watermark CS to address the required density increase.



#### 4.4.1 Damkar Lands - Appendix 8

An Amendment to Bylaw C-6798 - 2009 being the Watermark Conceptual Scheme, known as Damkar Lands – Appendix 8 was approved in 2014. The amendment provides further policy direction to the Plan Area. It supersedes the existing policies in place for the Plan Area as shown within the Watermark Conceptual Scheme.

The intent of the Appendix 8 amendment was to redesignate the lands to allow for the development of a church, in line with the vision of the Damkar Family. It references the Plan Area, stating it will remain undeveloped at that time and be part of a future application for residential development intended to include seniors'-oriented living.

Appendix 8 specifically identifies the Plan Area as Sub-Area Four (Future Development Area) subject it to the following policies:

<b>Policy 6.1.4.1</b>	Intensification of development of Sub-Area Four (Future Development Area) will be subject to future Council approvals including an additional Appendix to the Watermark Conceptual Scheme and subsequent redesignation and subdivision, and;
<b>Policy 7.3.3</b>	Sub-Area Four (Future Development Area) will be subject to future Council approvals including an additional Appendix to the Watermark Conceptual Scheme and subsequent redesignation and subdivision in accordance with policy 6.1.4.1 Sub-Area Four (Future Development Area).

Appendix 8 also triggered a land use redesignation for Sub-Area Four on an interim basis to Residential Three District (R-3) - under the old County Land Use Bylaw C-4841-97. This was strictly because of the reduction in parcel size caused by development on the remainder of the parcel. Agricultural Holdings District (AH) requires a minimum parcel size of 8.10 hectares (20.01 acres), which the Plan Area no longer met as a result of Appendix 8's proposed subdivision plan.

This Appendix will override the policies in Appendix 8 specifically as it relates to Sub-Area Four.

#### 4.5 SENIOR'S HOUSING ASSESSMENT [2015]

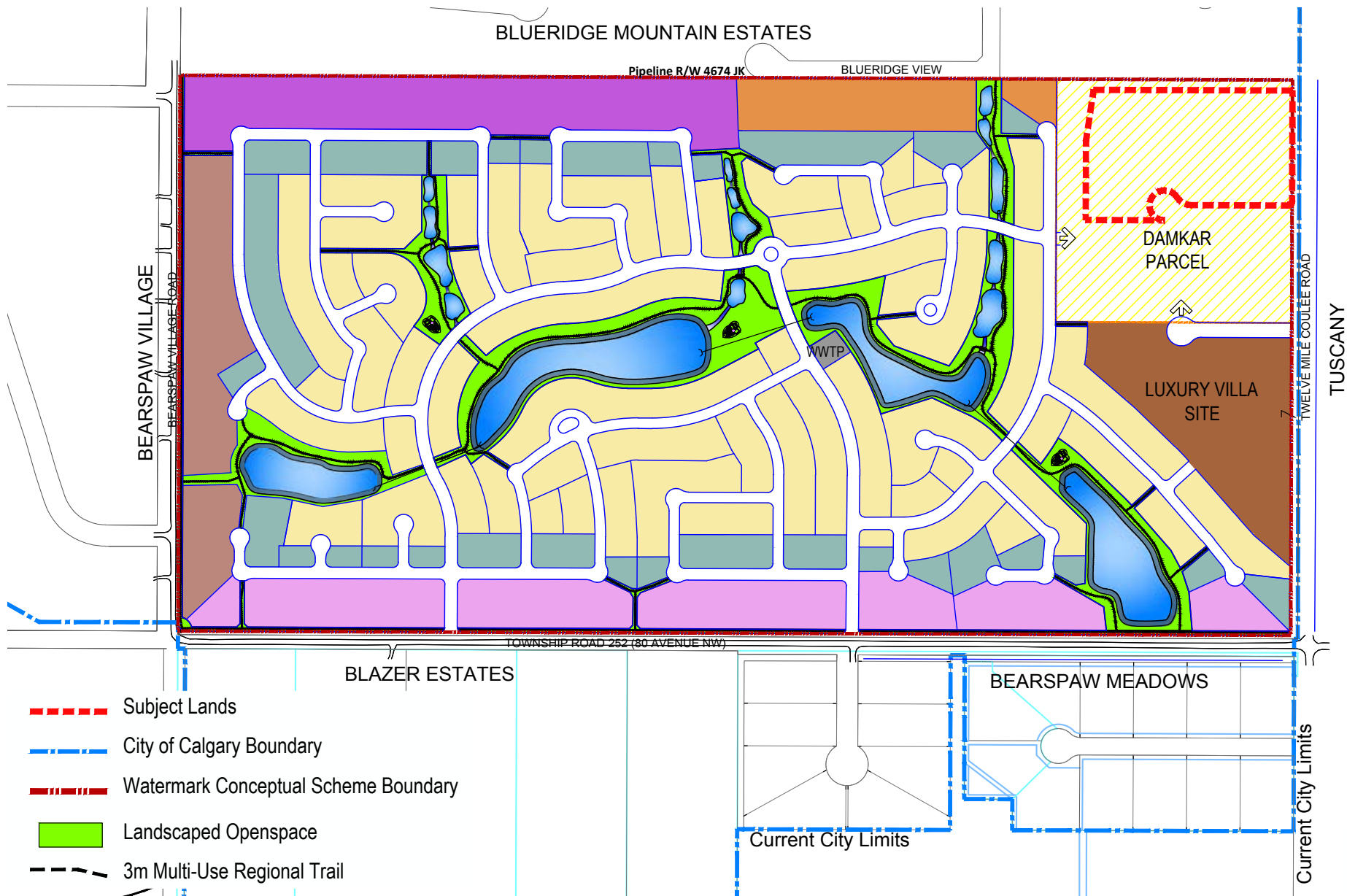
RVC undertook a Senior's Housing Assessment in 2015 to identify the available inventory of housing options appropriate for seniors, determine future need, and to create actions and strategies that the County can undertake to help meet its needs over the next 10-15 years. Key findings from the study include:

- The senior population and senior-led households in the County are increasing and projections indicate that these will continue to increase, signifying that the current demand for seniors housing will continue to grow in the near future.
- Average household incomes of senior-led homes are relatively high but there is also a large proportion of households with lower incomes, suggesting a need for both affordable and market rate housing options.
- The majority of homes in the County are single detached, which may not be the most appropriate housing type to facilitate aging at home. These also tend to be less affordable than other dwelling types.
- Most seniors in the County would like to remain in their own community or close to their own community as they age.
- Housing affordability is one of the most important factors which County seniors are considering.
- The need for affordable housing options in the County will continue to increase particularly as the average house prices in the County are increasing at a greater rate than the Province as a whole.
- Most survey respondents and focus group participants would like to move to a retirement community/ villa-type development offering light supports.
- Despite the upcoming additions to the supportive housing supply within the County and in adjacent municipalities, it is estimated that there will be a need for an additional 151 supportive housing units/ beds in the next ten years.

This Appendix provides a development framework that aligns directly with the findings of RVC's Seniors Housing Assessment and creates an opportunity to deliver a seniors oriented housing option. This allows for the completion of Watermark as a mixed-residential community that allows seniors to remain in their community near major amenities and critical services. This addresses a noticeable gap in RVC's existing housing supply.



Figure 2 | Watermark Conceptual Scheme



## 5

DEVELOPMENT PLAN  
CONTEXT

10

## 5.1 REGIONAL CONTEXT

**Figure 1** highlights the Plan Area's prominent location, within the urban fringe, sharing a boundary with the City of Calgary and **Figure 4** highlights the Local Context. Its location, within the large-lot, country residential community of Bearspaw, forms a logical transition to relatively higher density urban development to the east, within the Calgary community of Tuscany. The Plan Area is part of the Watermark Conceptual Scheme area, which sets density at a maximum of 1.95 units per gross acre for the overall area. This near urban density serves as a transition between the city of Calgary and the community of Bearspaw. The Plan Area is highly accessible due to 12 Mile Coulee Road which is used by Calgary and RVC residents to access commercial and retail services in the City. The lands are within the Rocky View/Calgary Intermunicipal Development Plan area as mentioned in **Section 3.3**.

## 5.2 LEGAL DESCRIPTION AND OWNERSHIP

**Figure 3** highlights the Plan Area which is approximately 5 ha (12.3 ac) within the SE of Section 18, Township Road 25, Range 2, West of the 5th Meridian. The Plan Area is owned by a development group led by Trico Developments (1990) Ltd. The site is legally described as Plan 1712232, Block 1, Lot 4.

## 5.3 LOCAL CONTEXT

**Figure 4** depicts existing and future subdivisions surrounding the Plan Area. These include a mix of larger-lot, lower density and smaller-lot, higher-density, single-family country residential developments, as well as villa-style development.

The adjacent development pattern can generally be characterized as follows:

- The subject lands are bound to the north by the low-density residential area of Blueridge Mountain Estates. These lots include single-family homes serviced by groundwater wells and private septic treatment systems.
- Spyglass Way in Watermark forms the boundary between the Watermark Community to the west and the Damkar Lands. To the west of Spy Glass Way is the single-family Watermark residential development.
- Villa-style multi-family development in Watermark forms the boundary to the south.
- 12 Mile Coulee Road forms the boundary to the east of the site. This road is within the City of Calgary's boundary. Beyond 12 Mile Coulee Road, to the west, exists the Community of Tuscany.





6

## EXISTING SITE CONDITIONS

### 6.1 EXISTING LAND USE BYLAW [C-8000-2020]

The Rocky View Land Use Bylaw (LUB) C-8000-2020 identifies the Plan Area as Rural District (p4.0). The purpose and intent of the Residential Rural District (R-RUR) is to provide for residential uses in a rural setting on parcels which can accommodate limited agricultural pursuits. As such, this Appendix proposes to redesignate Plan Area from R-RUR (p4.0) to Direct Control District to complete the final phase of Watermark and to achieve the overarching vision of the Damkar Family.

The LUB defines most of the adjacent lands to the north, west and south as a mix of R-CRD, R-RUR and DC141 (The Watermark Direct Control District), identifying the church site to the south as Special - Public Service District (S-PUB). To the east, the City of Calgary's Land Use Bylaw (1P2007), designates the lands as Residential – Contextual Narrow Parcel One Dwelling (R-C1N) District.

As stated in Section 4.5.1, Council's approval of Appendix 8 in 2014, and subsequent redesignation of the Plan Area from Agricultural Holdings (AH) District to Residential Three (R-3) District as an interim use (naming as per the previous Land Use Bylaw C-4841-97). This is because of the reduction of parcel size caused by development on the remainder of the parcel and Agricultural Holdings District (AH) requires a minimum parcel size of 8.10 ha (20.01 ac).

Figure 5 highlights the existing zoning of the Plan Area and adjacent uses.





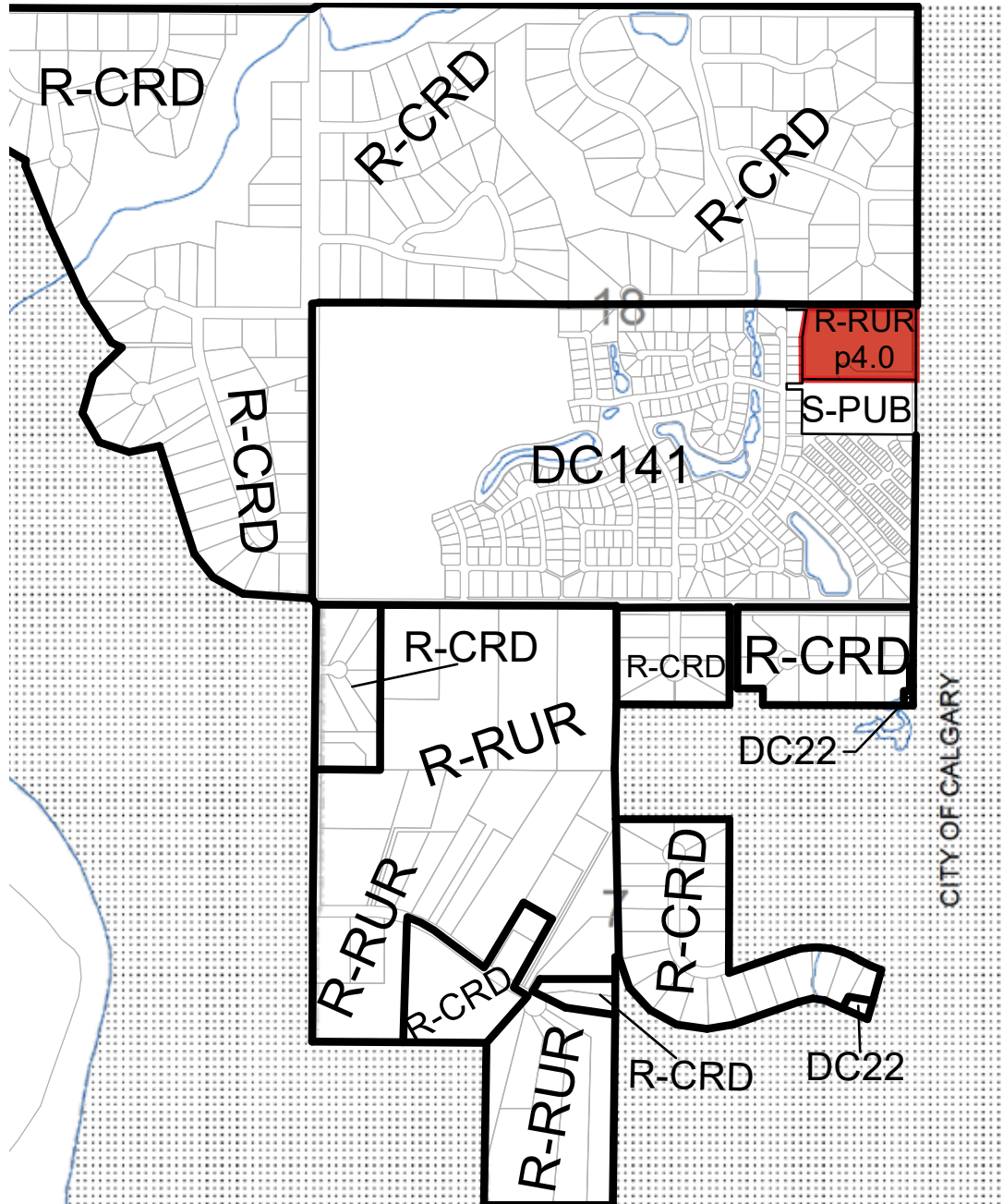


Figure 5 | Existing Land Use

A-GEN	Agricultural, General District
A-SML	Agricultural, Small Parcel District
R-RUR	Residential, Rural District
R-CRD	Residential, Country Residential District
R-URB	Residential, Urban District
R-SML	Residential, Small Lot Urban District
R-MID	Residential, Mid-Density Urban District
R-MRU	Residential, Multi-Residential Urban District
B-AGR	Business, Agricultural District
B-REC	Business, Recreation District
B-REG	Business, Regional Campus District
B-LOC	Business, Local Campus District
B-LWK	Business, Live-Work District

C-HWY	Commercial, Highway District
C-LRD	Commercial, Local Rural District
C-LUD	Commercial, Local Urban District
C-MIX	Commercial, Mixed Urban District
C-REG	Commercial, Regional District
I-LHT	Industrial, Light District
I-HVY	Industrial, Heavy District
S-PUB	Special, Public Service District
S-FUD	Special, Future Urban Development District
S-PRK	Special, Parks and Recreation District
S-NOS	Special, Natural Open Space District
S-NAT	Special, Natural Resource District

## 6.2 TOPOGRAPHY

Figure 6 demonstrates that the Plan Area slopes approximately 23m vertically from east to west, with steeper slopes at the west portion with original grades approaching +/- 18%. The elevations range from a high of +/- 1201 m along the east side of the Site adjacent to 12 Mile Coulee Road NW to a low of +/- 1177 m along the west boundary.

## 6.3 PRELIMINARY GRADING

The Plan Area has been partially disturbed by grading required to construct the Damkar Court roadway and the overland drainage facilities along the west boundary. Additionally, a pathway connection has been constructed to link Watermark to Damkar Court. The remainder of the Plan Area will be graded to consider the natural sloping topography of the parcel throughout the development.

## 6.4 GEOTECHNICAL EVALUATION

A Preliminary Geotechnical Assessment was undertaken by Levelton for the lands including the Plan Area in 2013. The soil profile at the test hole locations generally consisted of a thin layer of topsoil of 0.1 to 0.2m in depth. This was followed by variable layers of silt and clay overlying clay till. Silt was 1.2m in depth with a moisture content of 18.7% indicating relatively moist conditions. Clay was found between 3.2 and 6.4 metres below the ground surface level.

A relatively shallow water table is present at the site, as revealed by groundwater monitoring, which showed a water level at 3.7 metres below the existing grade. Excavations deeper than 2.2 metres of the existing ground surface may encounter groundwater seepage during the spring and summer months. These excavations may require temporary dewatering. The slopes on the subject property are considered stable under current conditions and the detailed design for the seniors-oriented residential community will continue to respond to all the requirements necessary to maintain this stability.



Existing Site Photos



Existing Site Photos



## 6.5 TRANSPORTATION NETWORK AND ACCESS

Figure 7 highlights existing access via an all-turns intersection at Twelve Mile Coulee Road and a shared access within Sub Area 7 of the Watermark project. This internal road has been constructed and is referred to as "Damkar Court".

12 Mile Coulee Road is a four-lane divided roadway between Highway 1A and 80 Avenue / Township Road 252. The road south of Highway 1A to Tuscany Way is classified as an Arterial. South of Tuscany Way, it is classified as a Primary Collector (27.0 metres)

## 6.6 PIPELINE RIGHT-OF-WAY

An ATCO natural gas pipeline runs along the northern boundary of the Plan Area within a 15 metre Public Utility Lot, acting as a buffer between the adjacent residential to the north.

## 6.7 ARCHAEOLOGICAL & HISTORICAL RESOURCES

There are no archaeological resources within the Plan Area. Historic Resource Act Clearance was granted by the Alberta Department of Culture and Community Spirit on September 24, 2012 (HRM file # 4835-12-0074).

## 6.8 ENVIRONMENTAL SITE ASSESSMENT

A Phase 1 Environmental Site Assessment was completed by Almor Engineering Associates in 2006. Based on the review of historical records, site reconnaissance and information available at the time of the Assessment, there are no known significant environmental impairments and no further assessment was recommended.





Existing Site Photos









Figure 7 | Existing Transportation Network

7

DEVELOPMENT  
CONCEPT

As illustrated on Figure 8: Development Concept, Trico Developments (1990) Ltd. plans to fulfill the Damkar's legacy by developing a comprehensively planned residential neighbourhood catering to seniors. This includes: A series of up to 79 villa-style homes attractively designed to leverage the slopes in the western portion of the site to provide spectacular view to the Bow River Valley to the west, and provide an appropriate interface with the existing residential developments located immediately north and west of the Plan area.

The development concept proposes vehicular access to the Plan Area from Damkar Court, an existing public road which intersects onto 12 Mile Coulee Road with an all-turns intersection. Access within the Plan area will be provided by a network of internal private roads designed to provide efficient access/egress for passenger and emergency service vehicles in accordance with the County Servicing Standards and applicable regulatory requirements. There is the potential to accommodate an emergency access between Damkar Court through to 12 Mile Coulee Road, which will not interfere with proposed transit infrastructure. This will be further considered through detailed design at the subdivision/development permit stage and subject to review by the City of Calgary.

The Plan Area will be serviced by the developer extending the existing water and sanitary infrastructure already constructed within the Watermark Community. The developer will also provide all applicable infrastructure levies, assessments and contributions, as required at the subdivision/development permit stage.

Stormwater management will be provided within the Plan Area and will integrate with existing drainage infrastructure in the Watermark Community. The specific sizing and configuration of the drainage network within Appendix 9 will be determined by a detailed stormwater report to be prepared at the subdivision/development permit stage.

Open space will serve the development in the form of a publicly accessible rock garden and west facing mountain lookout with seating and a connection to the pathway network. This provides existing and future residents with amenities that will encourage social interaction and recreation. Figure 8a highlights the concept in relation to adjacent areas to highlight the significant distance between future and existing residents.

### Development Concept Policies

- 7.1.1 Future development within the Plan Area should proceed in general accordance with Figure 8: Development Concept. It is anticipated that refinement to this concept will occur at the subdivision/development permit stage.
- 7.1.2 At the subdivision stage, the developer will register a Restrictive Covenant on each title to ensure the community caters to ages 55+.

20





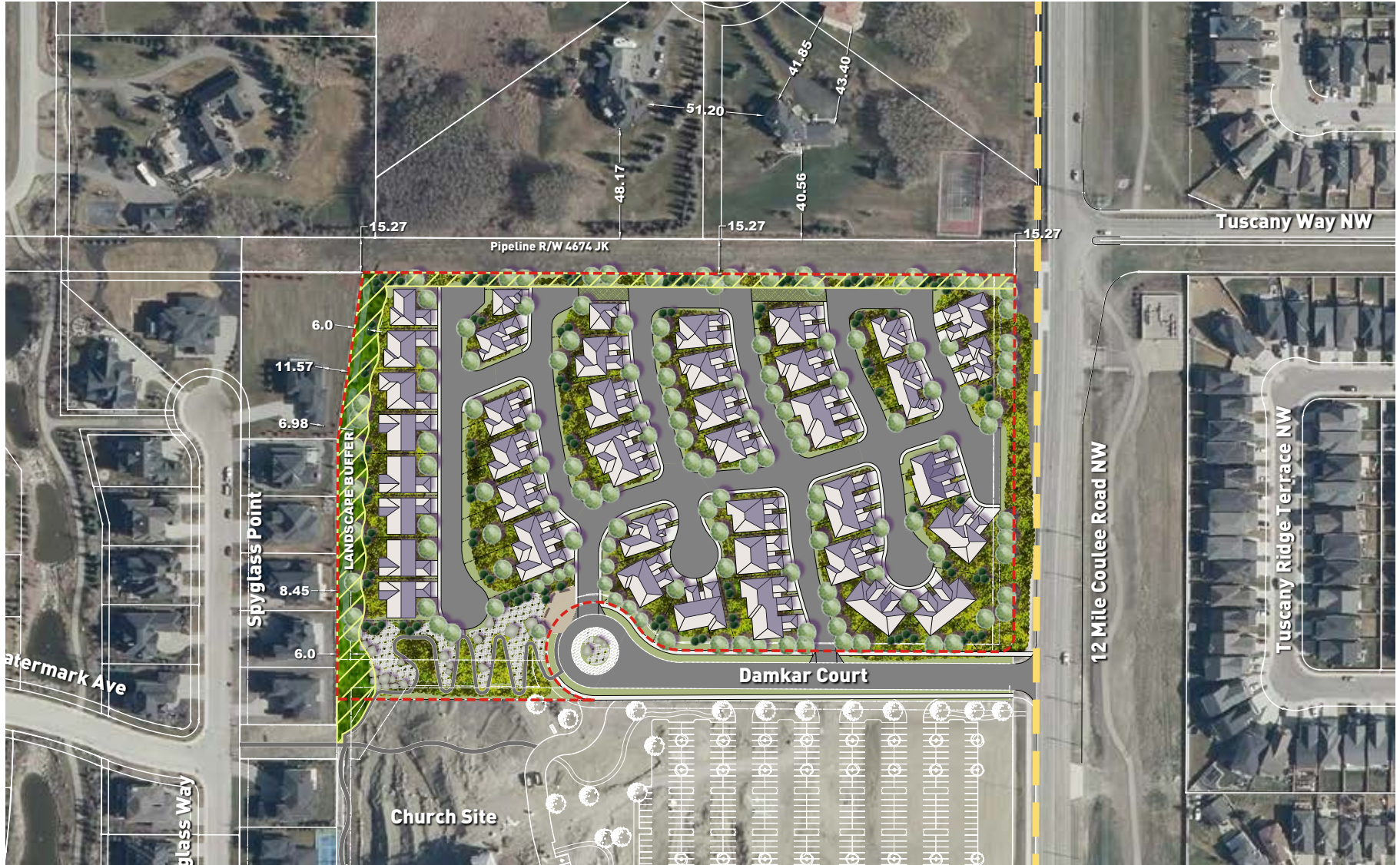
Figure 8 | Development Concept



CONCEPT ONLY - SUBJECT TO CHANGE AT THE SUBDIVISION/DEVELOPMENT PERMIT STAGE



Figure 8a | Development Concept and Adjacent Context



22



Figure 9 | Villa Precedents

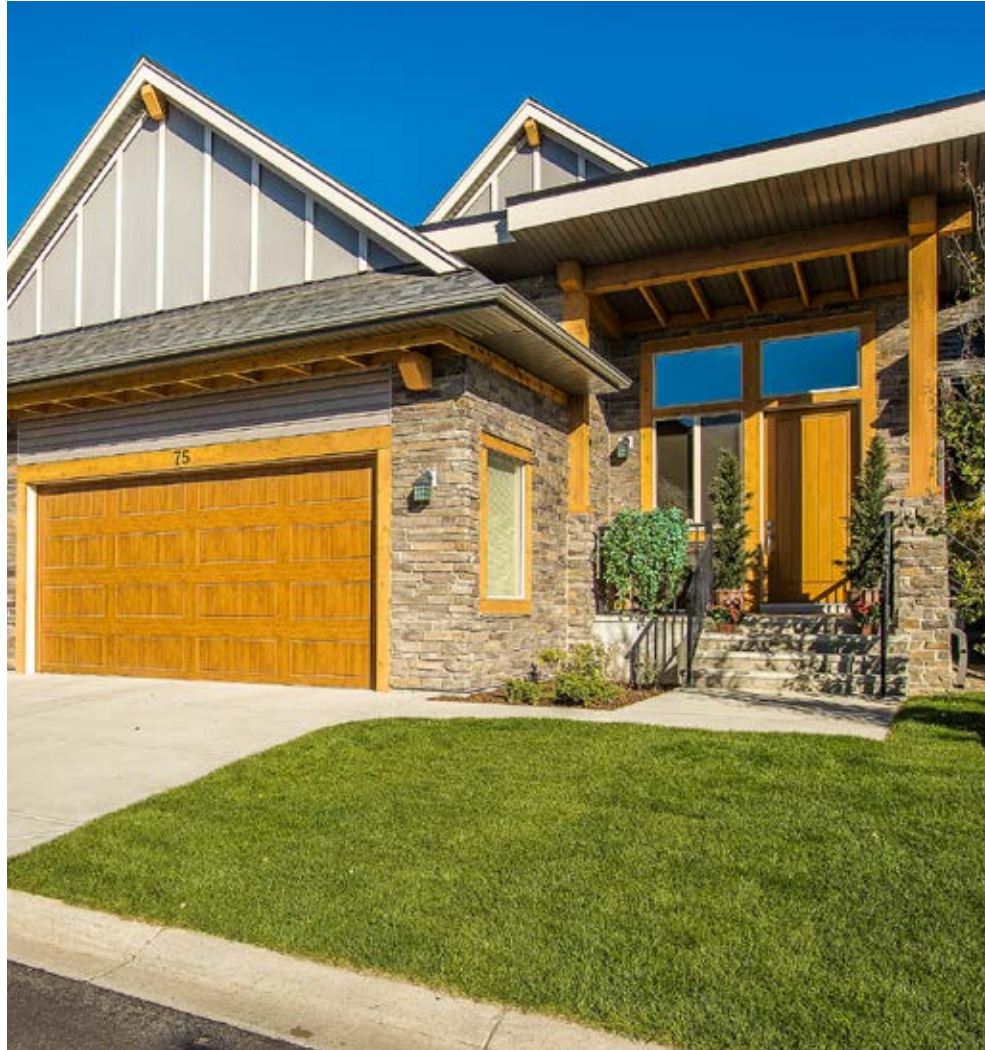


23





Figure 9 | Precedents [cont'd]





## 7.1 RESIDENTIAL DENSITY

The development anticipates up to 79 units on approximately 12.3 acres. This results in a residential density of approximately 6.4 units per gross acre.

The Watermark Conceptual Scheme establishes an overall maximum density of 1.95 units per gross acre over a total land area of 316 acres, for a total of 617 residential units. As such, the development concept proposed by this Appendix 9 contemplates a residential density that exceeds the Watermark Conceptual Scheme policy. **As such, an amendment to the Watermark Conceptual Scheme is required to increase the overall density to a maximum of 2.1 units per gross acre.** The Conceptual Scheme amendment requires an attendant amendment to the Bearspaw Area Structure Plan, 1994.

Table 1 Breakdown of Residential Density illustrates the density variance resulting from the development proposal.

### Residential Density Policy

7.1.1 The density of the Plan Area shall not exceed 15.8 units per gross developable hectare (6.4 units per gross developable acre)

Table 1 | Breakdown of Residential Density

Watermark Sub Areas	ha	ac	# of units	Residential density (upga)
1	7.2	17.8	13.0	0.7
2	3.2	8.0	8.0	1.0
3	5.4	13.2	10.0	0.8
4	11.9	29.3	30.0	1.0
5	15.8	39.1	68.0	1.7
6*	67.9	168.2	340.0	2.0
7	6.0	14.8	101.0	6.8
<b>SUB-TOTAL (pre Damkar site development)</b>	<b>117.4</b>	<b>290.4</b>	<b>570.0</b>	<b>1.95</b>
Damkar Appendix 8 (Church Site)	4.4	10.9	0.0	0.0
Damkar Appendix 8 (ATCO PUL)	0.5	1.3	0.0	0.0
Damkar Appendix 8 (Damkar Court ROW)	0.9	2.2	0.0	0.0
<b>Development Proposal (Seniors Residential Site)</b>	<b>5.0</b>	<b>12.3</b>	<b>79</b>	<b>6.4</b>
<b>TOTAL</b>	<b>128.1</b>	<b>317.0</b>	<b>649</b>	<b>2.1</b>

\*sub-area 6 increased in 2014 by 3.4 ac/10 units as per adoption of Damkar Appendix 8

## 7.2 OPEN SPACE

The landscape concept is an extension of the existing features, including the topography of the site. Overall, the proposed concept reflects a naturalized, low maintenance open space using low water and self-sustaining native grasses, wild flowers, ground covers and native plant materials. As figure 10 highlights, the concept plan integrates to the greater open space and pathway network.

The landscape design leverages existing engineered landscape features at the site, including the drainage right of way and swale along the western site boundary with the Watermark community, as well as the utility rights of way and public access easements that currently connect the site and Damkar Court with the community to the west. Using these existing features provide a sense of place and identity for existing and future residents. It is envisioned that the slope faces will have sculptured undulating contours with feature boulders and rocks selectively placed. The slope face will be naturalized with native grasses, wild flowers, ground covers, flowering shrubs and trees.

26

The elevation of the existing pathway provides for an exciting while challenging opportunity for a “living rock garden canvas” interface. The slope will be contoured and feature boulders, rocks and colored rock mulch formation selectively placed and shaped throughout the slope face. The slope face will be sculptured to create desirable planting pockets of ornamental grasses, wild flowers, stonecrop/sedum plants, ground covers and flowering shrubs.

A formal seating/viewing area with sidewalk connection perched on top of the zig zag pathway slope offers a panoramic view of the valley and the mountain. The seating/viewing area will be integrated with the slope and blended in with the rock garden setting. This location of the seating/viewing area at the top of the rock garden and the end of the cul-de-sac entrance way provides for a sense of arrival and a communal focal point. The seating/viewing area will have protective decorative posts and railing, decorative stone paving and seating benches for year-round enjoyment. The development of this seating/viewing area will create an additional amenity for the wider Watermark development.

## 7.2.2 MUNICIPAL RESERVE [MR]

The Plan Area does not owe any Municipal Reserve as it was previously paid as cash-in-lieu when the lands were subdivided in 2017 as per Subdivision Plan 171 2082.

Figure 10 | Open Space Network



Private Open Space Policies

- 7.2.1 Private Open Space shall be constructed by the developer at the subdivision/development permit stage, as generally illustrated by **Figure 11: Internal Open Space**, which includes a lookout seating area and rock garden, conceptually identified by the precedent images in Figure 11a.
- 7.2.2 The Private Open Space shall be maintained by a Condominium Association/Board or Homeowners Association
- 7.2.3 A Condominium Association/Board or Homeowners Association shall own and maintain the pathway system.
- 7.2.4 The existing Public Access Easement will be reviewed at the Subdivision stage to ensure it is accessible to the general public.
- 7.2.5 The specific alignment, width and surface treatment of the pathway system will be reviewed at the Subdivision stage to ensure it is accessible to the general public.
- 7.2.6 As a condition of subdivision, the developer shall submit a landscaping plan that details the nature of plantings within the north and west landscape buffer identified in Figure 8a to the satisfaction of Rocky View County. The plan shall provide for appropriate screening within the landscape buffer to ensure appropriate transitions between buildings, and ensure plants are drought and wind tolerant and native to Calgary Region Zone 3B.

Figure 11 | Internal Open Space



CONCEPT ONLY - SUBJECT TO CHANGE AT THE SUBDIVISION/DEVELOPMENT PERMIT PHASE

Figure 11a | Rock Garden and Lookout Precedent Imagery





8

## TRANSPORTATION

28



## 8.1 TRANSPORTATION NETWORK

The 2008 Transportation Impact Assessment (TIA) and the 2011 TIA for the Watermark Development included the Plan Area. However, the nature of future development of the site was unknown at the time of the reports. As such, the original 2008 study assumed that the Damkar Lands would consist of 60 single-family residential units and, similarly, the 2011 update assumed a total of 57 single-family residential units on this parcel. The current proposal generates more total trips than assumed in previous studies.

An updated TIA for the Damkar Lands (Appendix 8) was completed by Bunt & Associates in May 2013 and the analysis considered approximately 400 units for the Plan Area. The 2013 TIA found that for the opening day horizon, which includes the development of the Plan Area, the site access intersection with 12 Mile Coulee Road can be expected to operate within acceptable capacity parameters during the AM, PM and Sunday peak hours with only a stop sign for intersection control. No significant traffic impacts resulting from this overall development are anticipated at opening day. Transportation levies have been paid as part of previous development applications.

Bunt and Associates prepared a TIA update (2020) for this Appendix to determine impact as it relates to the proposed development concept. Post-development analysis anticipates most of the study intersections to operate at capacity similarly to the long-term pre-development conditions. Traffic generated from the development concept causes negligible impacts to the intersections and traffic movements.

The TIA (2020) does not recommend any additional improvements beyond those identified for the background scenarios.



Specifically relating to vehicular movements, The TIA found:

- The City of Calgary has a long-term solution for the intersection at 12 Mile Coulee Road NW and Crowchild Trail. The TIA expects this intersection to operate at capacity in the 2028 and 2039 horizons, excluding traffic generated from the Plan Area.
- For opening day horizon, including the Plan Area, the site access at 12 Mile Coulee Road and Damkar Court should operate within acceptable capacity parameters to the 2039 horizon.
- The two intersections along 12 Mile Coulee Road at Tuslewood Drive NW and Tuscany Way NW may require signalization by 2028, even without the development of the Plan Area. The TIA, however, expects both intersections to operate within capacity with signalization, considering anticipated volumes from the Plan Area.

The TIA anticipates the intersection at 12 Mile Coulee Road and Blueridge Rise to operate with delays for the east bound left turn, although the analysis does not warrant the need for signals. Local conditions may dictate a need for some improvement in the future.

The development concept proposes a pathway along the utility right of way on the north boundary of the Plan Area. This will connect the regional pathway system in Watermark to the regional path (under construction) along 12 Mile Coulee Road. This then connects to a wider regional path system within Calgary. Signalization at the 12 Mile Coulee Road NW and Tuscany Way NW intersection with crosswalks, will improve the east-west connectivity and pedestrian safety.

Cycling infrastructure is provided via the regional pathway system along 12 Mile Coulee Road NW and City of Calgary transit is available within 650 metres of the site in the adjacent Tuscany area. The Tuscany LRT Station is located within a 6-minute drive from the Plan Area with direct bus connections available along Tuscany Way NW

## Transportation Policies

- |        |  |
|--------|--|
| 8.1.2  | The Transportation Impact Assessment (Bunt & Associates, March 2020) shall be circulated to the Rocky View County/City of Calgary Intermunicipal Cooperation Team.   |
| 8.1.3  | Access within the Plan Area shall be generally in accordance with <b>Figure 8: Development Concept</b>   |
| 8.1.4  | The internal access routes shall be constructed by the developer with a paved surface in accordance with all applicable Rocky View County engineering design standards.  |
| 8.1.5  | The need for an emergency access point will be determined at the subdivision/development permit stage, at the discretion of Rocky View County.   |
| 8.1.6  | Any emergency connection to 12 Mile Coulee Road shall be constructed by the developer to the satisfaction of the City of Calgary.  |
| 8.1.7  | 12 Mile Coulee Road and all associated intersections will be upgraded by the developer in accordance with the TIA when triggered by the proposed development, to the satisfaction of the City of Calgary and Rocky View County.  |
| 8.1.8  | Prior to subdivision approval, the County, in consultation with The City of Calgary, shall review the impacts to The City of Calgary's infrastructure and services. If material impacts are found, a cost sharing agreement and/or alternative appropriate mechanisms shall be in place prior to subdivision to address those impacts. |
| 8.1.9  | An updated TIA will be required at the subdivision and/or development permit stage.  |
| 8.1.10 | The Condominium Board/Association or will be responsible for maintaining the internal road network.  |
| 8.1.11 | The developer shall provide the applicable Regional Transportation Off-site Levy at the subdivision stage.   |

## 9

## UTILITY SERVICING

30

## 9.1 WATER SERVICING

Water servicing for the proposed Seniors Housing development will utilize the Rocky View County Utilities (formerly Blazer Water Systems Ltd.) water treatment and distribution system that was constructed in the adjacent Watermark residential development. The water distribution system will provide treated potable domestic water and fire flows to the proposed development.

Water distribution mains to service the Seniors Housing development were installed during the construction of Damkar Court and include a dual (looped) 200 mm PVC mains extending from Spyglass Way near the intersection with Watermark Ave. Two 200 mm PVC mains have been stubbed into the site which will be extended through the area with required looping to service the units minimizing the number of units serviced from dead-end mains. The site water distribution system is conceptually shown on Figure 12.

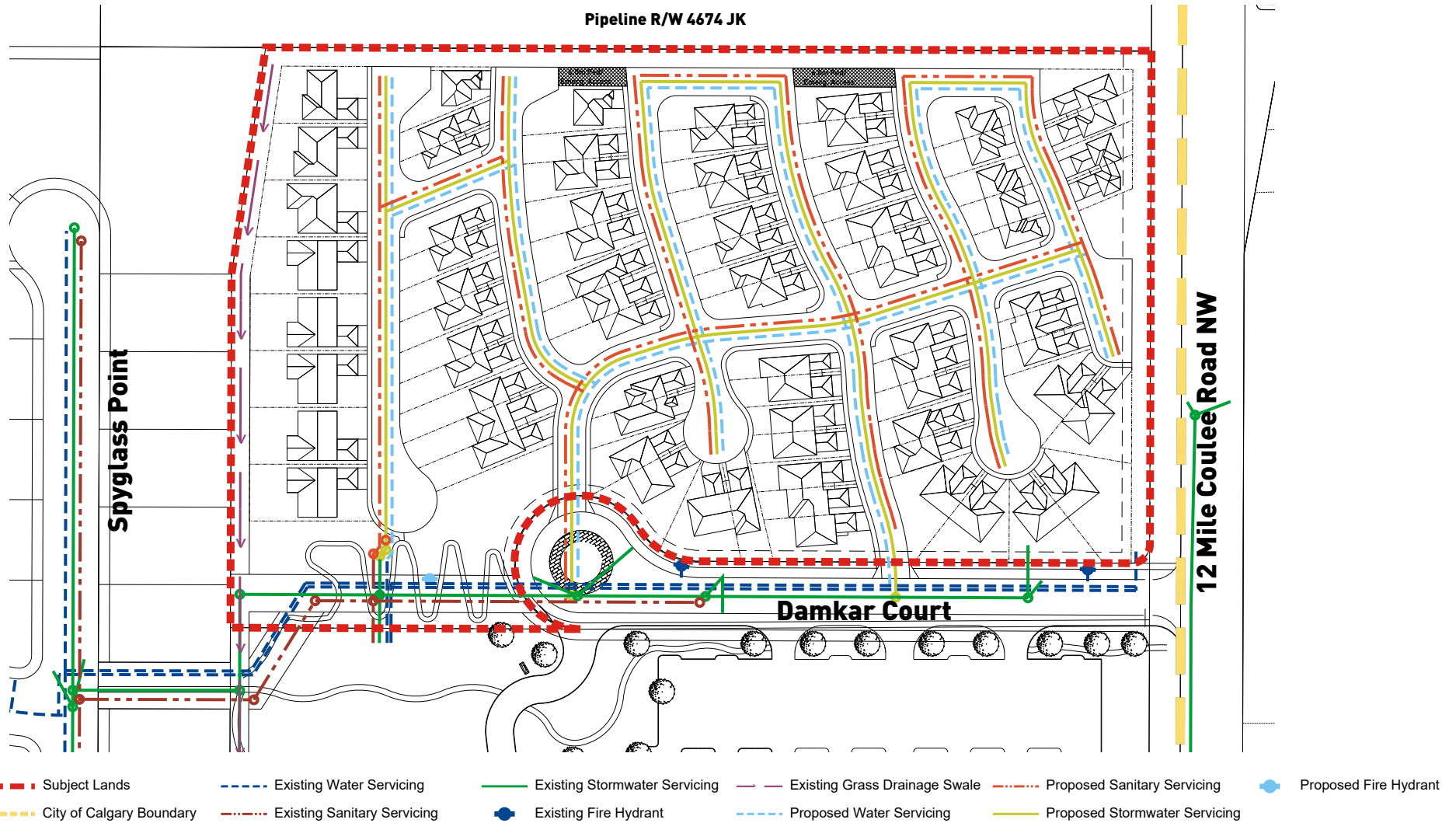
During detailed design, a water network analysis will be completed to confirm the on-site pipe sizes and alignments. This will also include a confirmation of the existing system capacity as well as identify any potential upgrades required. The on-site water distribution system will be designed according to Rocky View County Servicing Standards and Alberta Environment Standards and Guidelines.

## Potable Water Servicing Policies

- 9.1.1 Any future improvements to water infrastructure including obtaining necessary approvals and permits to service the plan area shall be the responsibility of the developer.



Figure 12 | Preliminary Utility Servicing



CONCEPT ONLY - SUBJECT TO CHANGE AT THE SUBDIVISION/DEVELOPMENT PERMIT PHASE

## 9.2 SANITARY SERVICING

Existing off-site sanitary infrastructure is also available to service the Plan Area.

The Watermark gravity collection system was expanded during the construction of Damkar Court and includes two 200mm PVC mains stubbed into the Plan Area as **Figure 12: Utility Servicing** conceptually illustrates. The gravity collection system drains to the Bearspaw Regional Wastewater Treatment Plant located within the Watermark development. The sewer main for the Plan Area ties into the Watermark system on Spyglass Way via the private open space area. A utility easement right of way agreement will be registered to accommodate the sewer main as shown on **Figure 12: Utility Servicing**.

CIMA+ conducted a preliminary analysis of the Watermark wastewater collection system based on the record information of Damkar Court and Watermark Phase 1. CIMA+ found existing capacity to accommodate the development concept and the analysis identifies mitigation measures potentially required to adequately convey the effluent generated at the highest range of proposed density.

### Sanitary Servicing Policies

- 9.2.1 Any future improvements to wastewater infrastructure including obtaining necessary approvals and permits to service the plan area shall be the responsibility of the developer.

A sanitary servicing study will be completed at the detailed engineering design stage of the development to confirm if upgrades are required to the existing gravity collection system. The study will also investigate the available capacity of the Bearspaw Regional Wastewater Treatment Plant and identify if upgrades are required to meet the additional demand of the proposed development.

The sanitary system will be designed according to Rocky View County Servicing Standards and Alberta Environment Standards and Guidelines.



## 9.3 STORMWATER SERVICING

Westhoff Engineering Resources Inc. prepared a Stormwater Management Plan (SWMP) in support of this Appendix. Preliminary analysis emphasizes that the SWMP meets the requirements of the Watermark at Bearspaw Master Drainage Plan. In addition, it recognizes the information of the As built Drawings (October 2015 by IBI Group) of the Damkar Lands Phase 1, located to the south of the Project Site. No external areas drain to the Plan Area as Twelve Mile Coulee Road NW drains independently and managed by the City of Calgary. The following criteria guides the design of the on-site stormwater management system:

- The major system should include traplows optimized to temporarily detain runoff as much as possible. No major storage facilities (central ponds) are expected to be required, considering the high allowable unit area release rate.
- Stormwater is collected through catchbasins located at the bottom of traplows and may include Inlet Control Devices (ICD) to maximize storage.
- The minor system, mostly located within road corridors, includes pipes upsized to serve as an underground storage facility. Underground tanks may be required to complete to storage required to meet the permissible rate. The suitable locations and volumes for the tanks, if any, will be identified and designed at the time of detailed subdivision.
- The minor system is connected to the existing Damkar Phase 1 pipe system. Three PVC stubs 375 mm in diameter, exist for the future connection along the south side of the proposed development. Based on the storm drainage area plan for Damkar Phase 1 (C5.1, IBI October 2015), the area draining to the downstream system is 3.67 ha (1.22 ha each) with a total flow capacity of 0.44 m<sup>3</sup>/s. The new proposed concept plan includes a total area of approximately 5 ha. At the detailed design stage, these numbers will be confirmed and updated with the final architectural and civil plans.

The use of Low Impact Development Strategies (LIDS) and Best Management Practices (BMPs) can be introduced at the time of detailed design. LIDS include routing storm runoff from impervious surfaces to absorbent landscape areas to promote vegetation nourishing by infiltration and evapotranspiration within the soil mass. Water quality can also be improved as sediments and surface pollutants within the storm runoff is trapped by the absorbent landscape before entering the water features.

### Stormwater Management Policies

- |       |  |
|-------|--|
| 9.3.1 | The developer shall construct a stormwater management system within the Plan area as generally illustrated by Figure 12: Utility Servicing   |
| 9.3.2 | A qualified professional will prepare a detailed Site-Specific Stormwater Implementation Plan at the subdivision/development permit stage. This will determine size, shape, unit area release rate control and water quality in accordance with the Bearspaw Master Drainage Plan and County Servicing Standards.  |
| 9.3.3 | An Erosion and Sediment Control (ESC) Plan and report will be submitted and approved at the subdivision/development permit stage in accordance with the County Servicing Standards. The ESC measures identified on the approved plan will be implemented in the field prior to the start of construction. Additionally, ESC measures will be monitored by the developer for effectiveness throughout the duration of construction. |
| 9.3.4 | The design of the LID/BMP's shall be in accordance with all applicable Provincial regulatory requirements and Rocky View County engineering design standards.  |
| 9.3.5 | The specific requirement of storm service connections for the Plan Area will be determined at the subdivision/development permit stage.  |

## 9.4 SHALLOW UTILITIES

The developer will provide shallow utilities (i.e. electricity, telecommunication, natural gas, etc.) at the implementation stage in consultation with all applicable shallow utility providers. It is the understanding of CIMA+ that the construction of Damkar Court included installation of the shallow utilities to service the Plan Area, including power, gas and telecommunication utilities. The joint utilities have been installed underground within the Utility Right of Way registered on the Site adjacent to Damkar Court and the services have been stubbed into the site.

### Shallow Utility Policies

- 9.4.1 The developer shall install and/or finance shallow utilities at the subdivision/development permit stage.
- 9.4.2 The developer, in consultation with applicable utility providers, will determine the alignment of utility installations at the development subdivision/development permit stage in accordance with Rocky View County engineering design standards. Rights-of-way will be registered accordingly at the subdivision stage.

## 9.5 SITE GRADING AND SLOPE STABILITY

The Plan Area will be graded to consider the natural sloping topography of the parcel throughout the development and the buildings will be positioned to “step down” the overall slope across the Plan Area to provide flatter amenity space between the buildings.

A site grading plan will be completed at detailed design with consideration for the deep utility servicing (sanitary and water) and the stormwater management plan. Pre and post development catchment areas will be considered, and storm drainage will be directed to the stormwater management facility located between the buildings. The method of conveyance (e.g. overland drainage ditches or storm pipes), minimum/maximum slope requirements, and elevations of adjacent areas will all have an impact on site grading and final design grades.

### Site Grading Policies

- 9.5.1 A site grading plan will be completed at the subdivision/development permit stage, with consideration for utility servicing.
- 9.5.2 A geotechnical investigation and slope stability analysis will be provided at the subdivision/development permit stage. The geotechnical investigation will incorporate evaluation of the soil and groundwater conditions within the project boundaries and geotechnical recommendations for the design and construction of site grading, underground services, stormwater infrastructures, foundations, asphaltic concrete pavement structures and all other relevant geotechnical aspects for the proposed development to the satisfaction of the County.

## 9.6 COMMUNITY INFRASTRUCTURE

### 9.6.1 Emergency Services



Fire services will be provided by the Bears paw Fire Station. Police services will be provided by the Royal Canadian Mounted Police and the RVC Special Constables. Emergency medical services are expected from facilities based in Calgary and/or Cochrane.

### 9.6.2 Recreational Services

Bears paw Glendale Recreation District includes the Community of Watermark. The Bears paw Glendale Lifestyle Centre provides a variety of recreational opportunities to residents within the area. The Centre, however, is running at capacity and requires additional community space and recreational amenities in the area. Construction of the church located south of the Plan Area could help to meet this need by providing a space that could be utilized by various community and recreational groups in the area. Moreover, overflow parking during off-peak hours could serve as a staging area for people to leave their cars while using the regional pathway and open space system in the area.

### Emergency Services Infrastructure Policy

- 9.6.1 Fire suppression shall be provided within the Plan Area via provision of fire hydrants and appropriately designed access roads, as determined by the County Servicing Standards and in conformity with the Provincial Building Code and other applicable standards and regulations.

### Recreation and Community Services Policy

- 9.6.2 Prior to subdivision, Rocky View County, in collaboration with the City of Calgary, shall review the impacts of the development to The City of Calgary's recreation and community services to the satisfaction of both parties. If demonstrable impacts are found, the applicant shall enter into a cost contribution agreement with Rocky View County in coordination with the City of Calgary, providing a financial contribution to offset the development's impacts. This contribution shall be in addition to any recreation and/or community services levy imposed by Rocky View County.



## 10

## IMPLEMENTATION

Adoption of this Appendix 9 to the Watermark Conceptual Scheme will establish the expectations guiding the implementation of development on the Plan Area.

This Appendix provides a framework of land use policies that must be considered prior to subsequent consideration of land use amendment and/or development permit approval for development within the Plan Area. Consideration of this Appendix will occur following a statutory Public Hearing during which all matters will be evaluated and considerations from municipal staff, technical agency requirements and area landowner will be clarified. RVC Council will consider adoption of this Appendix to the Watermark Conceptual Scheme pursuant to the requirements of the Municipal Government Act.

Subsequently, consideration of land use amendment, subdivision and development permit applications will follow in accordance with the policies of this Appendix to the Watermark Conceptual Scheme and other RVC development requirements.

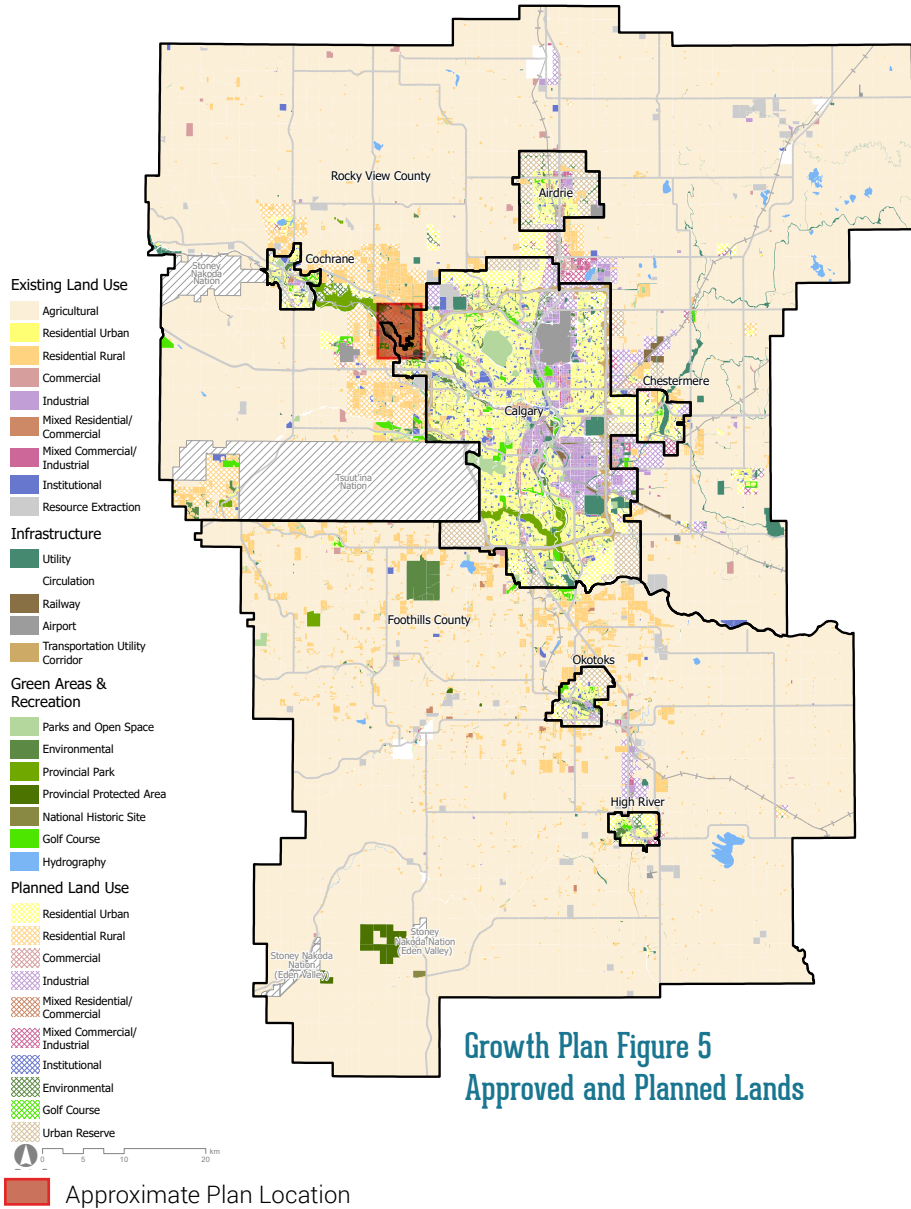
### 10.1 THE CMRB REGIONAL GROWTH PLAN [AUGUST 2022]

The Calgary Regional Metropolitan Board (CMRB) Growth Plan guides growth in the Calgary Metropolitan Region. The Growth Plan identifies the Plan Area as Residential Urban (Growth Plan, Figure 5) within an Existing Area Structure Plan in the Regional Growth Structure (Growth Plan, Schedule 1).

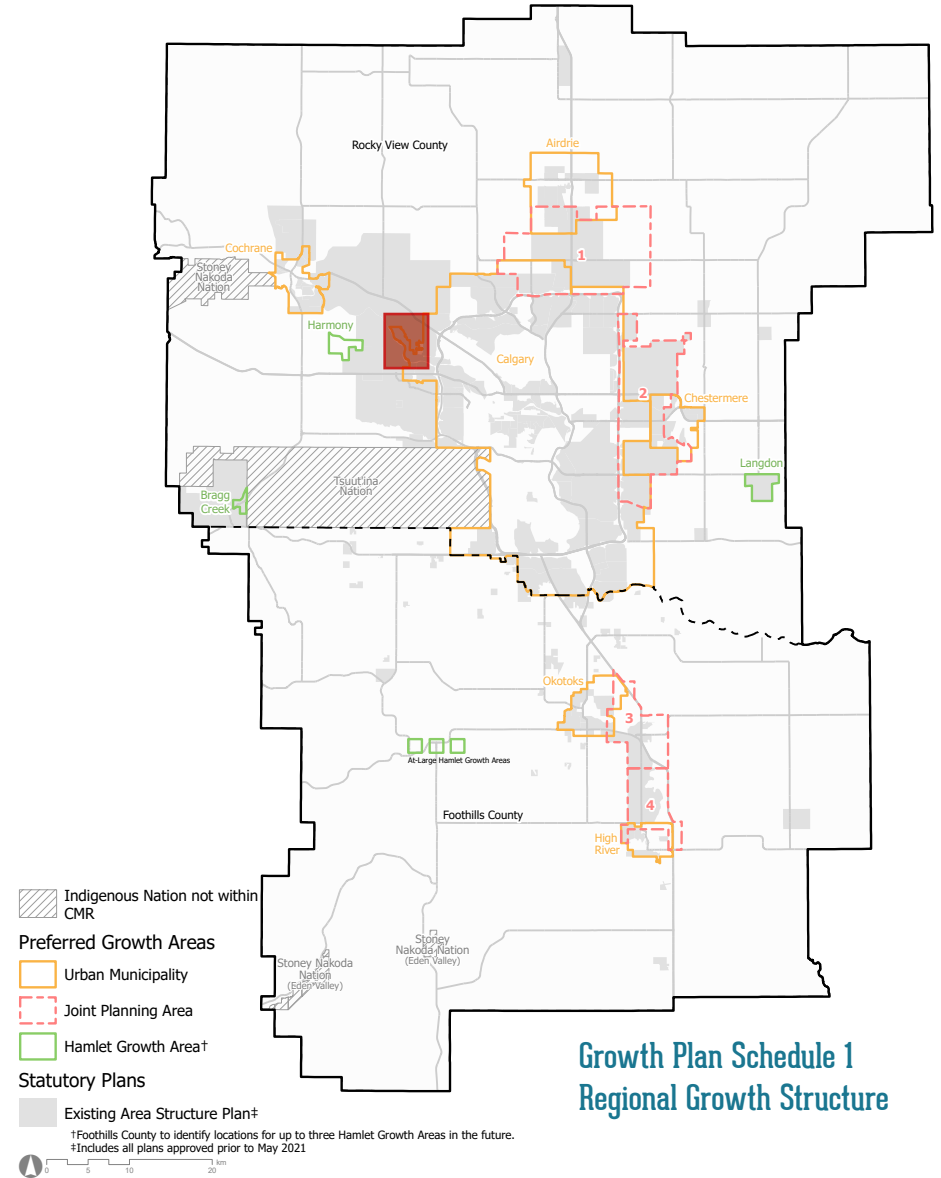
The Development Concept is consistent with Growth Plan policies supporting growth in areas that adjoin urban municipalities, promote a range of housing, and optimize existing infrastructure and services. Given that the Watermark Conceptual Scheme is appended to the Bearspaw Area Structure Plan (ASP), which is a statutory plan, an amendment to the ASP may be subject to the CMRB approval process, if determined so by RVC Administration. However, as per policy 4.2c(iv) Municipalities are not required to refer statutory plan amendments to the CMRB if they are fewer than 80 units outside of a preferred growth area. As such, there is no expectation for this to be referred to the CMRB.



Figure 13 | CMRB Growth Plan Figure 5 & Schedule 1



Growth Plan Figure 5  
Approved and Planned Lands



Growth Plan Schedule 1  
Regional Growth Structure

## 10.2 DESIGN STANDARDS

The development proposes a built form that will be consistent with the Watermark architectural and landscape design details as referenced in Section 6.2 of the Watermark Conceptual Scheme. In a general sense, the 'Watermark' trademark will be incorporated into open spaces and building forms.

The developer shall administer the design and architectural standards and will generally consider:

- Site positioning and built form including minimizing building footprints and maintaining views;
- Community character and architectural guidelines including attention to natural features and architectural controls for each building;
- Downward-focused lighting designed to eliminate excessive lighting impacts on adjacent uses as per dark sky regulation in the land use bylaw;
- Landscaping and water conservation through Low Impact Development principles;
- Crime Prevention Through Environmental Design will be incorporated into the detailed site design and development permit stage.

### Design Standards Policies

- 10.2.1 Development standards and architectural guidelines will be administered by the developer and/or a Condominium Association or Board and consider the contextual nature of surrounding development, in conceptual alignment with Figure 9.
- 10.2.2 Development within the Plan Area shall adhere to the County's Land Use Bylaw Outdoor Lighting Regulations and International Dark Sky Association Guidelines, to the satisfaction of the County.
- 10.2.3 Water conservation and landscaping guidelines shall be administered by the developer and/or a Condominium Association, in alignment with Water Conservation Policy C-600.
- 10.2.4 At the subdivision/development permit stage, in consultation with the Watermark HOA, the Developer shall prepare and implement architectural design guidelines for all residential development that reflects the community's character and ensures an aesthetically coordinated appearance of development from the street and public areas, and address landscaping requirements within areas abutting existing residential developments to the north and west of the Plan area.

## 10.3 PROPOSED LAND USE AMENDMENT

The development concept proposes a mix of low-density residential homes to accommodate a variety of seniors allowing individuals and families to age in place within the Community of Bearspaw. As such, this Conceptual Plan amendment proposes to redesignate Plan Area from R-RUR (p4.0) to Direct Control District (DC) to complete the final phase of Watermark and to achieve the overarching vision of the Damkar Family.

The prescriptions within the DC bylaw will establish specific regulations regarding matters such as density, building heights, landscaping requirements, additional technical assessments, and any other unique considerations necessary to implement the proposed development concept at the subdivision/development permit stage.

### Land Use Amendment Policy

- 10.3.1 The land use is expected to be applied by a land use redesignation as generally illustrated by **Figure 13: Proposed Land Use Redesignation**.

## 10.4 WEED MANAGEMENT PLAN

The developer shall prepare a Weed Management Plan in accordance with RVC requirements and Weed Control Act to mitigate against invasive weeds during the construction and grading process.

### Weed Management Policy

- 10.4.1 The developer shall provide a Weed Management Plan at the subdivision/development permit stage to establish measures to mitigate against potential invasive weed issues during construction and grading.

## 10.5 CONSTRUCTION MANAGEMENT PLAN

The developer shall prepare a Construction Management Plan at the subdivision/development permit stage to establish measures as may be required to mitigate ongoing construction issues. These issues may create negative impact for surrounding residents such as noise and construction access to the Plan area.

### Construction Management Policy

- 10.5.1 The developer shall provide a Construction Management Plan shall be at the subdivision/development permit stage to establish potential mitigation requirements as may be necessary to limit negative impacts to surrounding residents during construction activities within the Plan area.

## 10.6 PHASING

Development within the Plan Area is expected to proceed in two (2) phases. The developer will install transportation, utility servicing and recreational infrastructure as required by each development phase as required by the municipality in accordance with the terms of a Development Agreement.

### Phasing Policy

- 10.3.1 Implementation of subdivision shall proceed in phases responding to market demand.
- 10.3.2 The phasing program may be adjusted subject to an approval from the Rocky View County Subdivision Approval Authority and the provision of required infrastructure.
- 10.3.4 A Condominium Association/Board or Homeowners Association shall be established at the subdivision stage identifying that each lot owner is a member of the Condominium Association/Board or Homeowners Association.

Figure 14 | Proposed Land Use Designation

