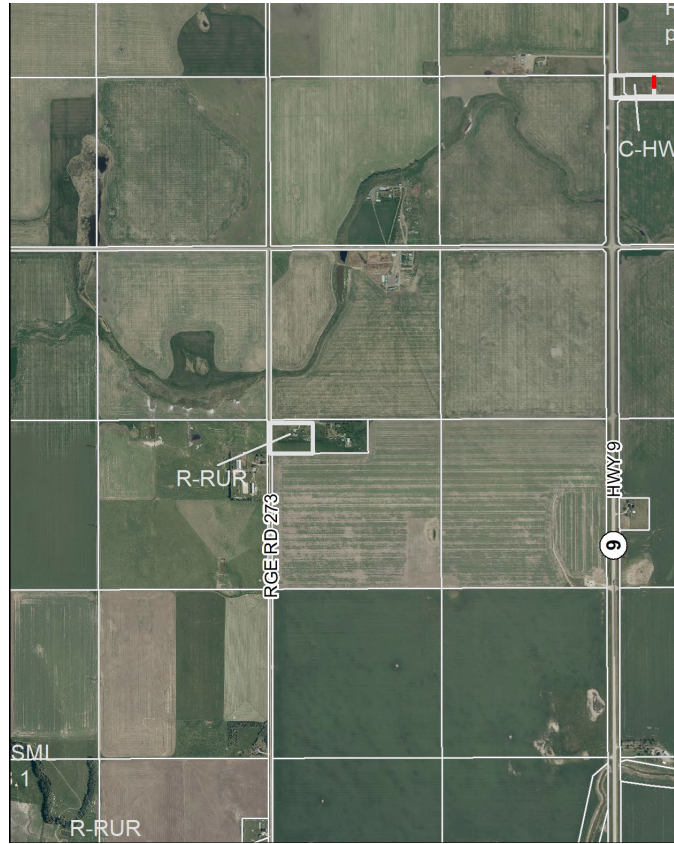
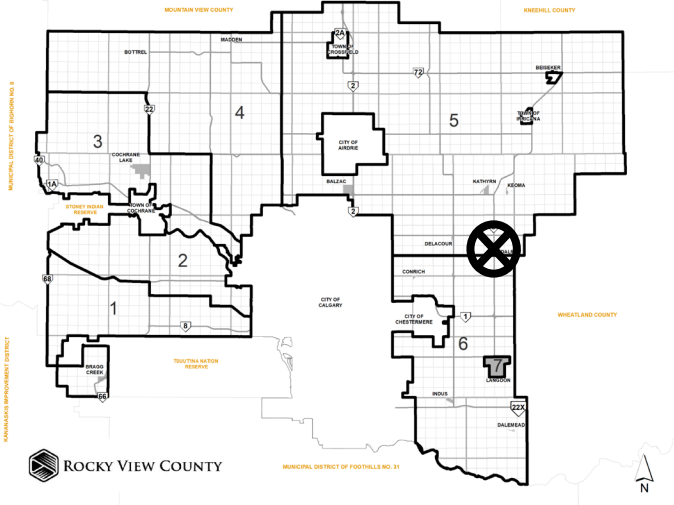


Location & Context

Road Closure Proposal

To assess the proposed closure of a ±0.025 hectare (±0.062 acre) portion of Plan 2166W to facilitate future consolidation with Lot 1/4, Block 4, Plan 2166W within SE-14-25-27-W04M.

Division: 5
Roll: 05214024
File: PL20240074
Printed: Apr 12, 2024
Legal: A portion of SW-14-25-27-W4M



Development Proposal

Road Closure Proposal

To assess the proposed closure of a ± 0.025 hectare (± 0.062 acre) portion of Plan 2166W to facilitate future consolidation with Lot 1/4, Block 4, Plan 2166W within SE-14-25-27-W04M.



Division: 5
Roll: 05214024
File: PL20240074
Printed: Apr 12, 2024
Legal: A portion of SW-14-25-27-W4M

Environmental

Road Closure Proposal

To assess the proposed closure of a ±0.025 hectare (±0.062 acre) portion of Plan 2166W to facilitate future consolidation with Lot 1/4, Block 4, Plan 2166W within SE-14-25-27-W04M.



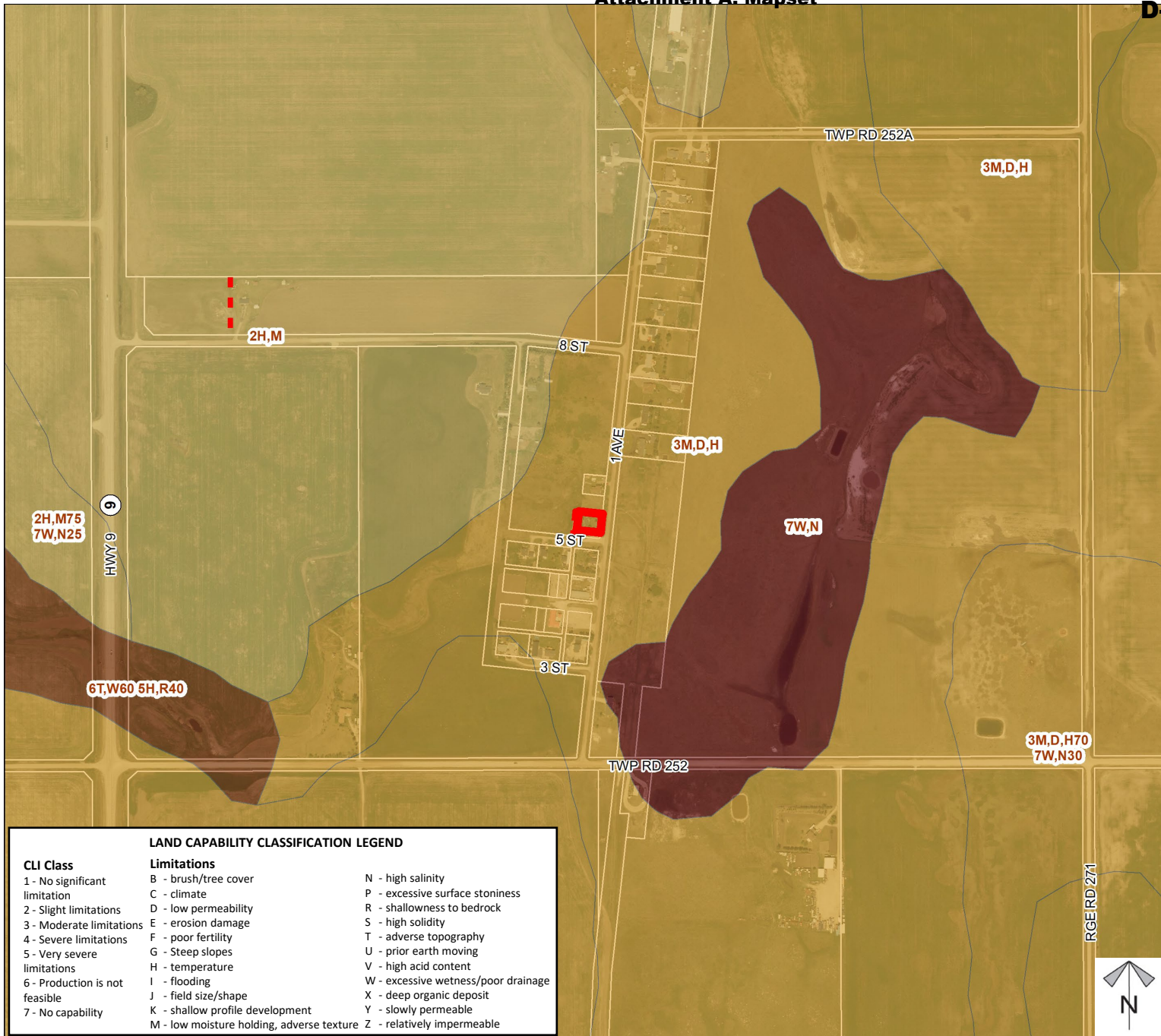
-  Subject Lands
-  Contour - 2 meters
-  Riparian Setbacks
-  Alberta Wetland Inventory
-  Surface Water

Division: 5
Roll: 05214024
File: PL20240074
Printed: Apr 12, 2024
Legal: A portion of SW-14-25-27-W4M

Soil Classifications

Road Closure Proposal

To assess the proposed closure of a ±0.025 hectare (±0.062 acre) portion of Plan 2166W to facilitate future consolidation with Lot 1/4, Block 4, Plan 2166W within SE-14-25-27-W04M.



LAND CAPABILITY CLASSIFICATION LEGEND

CLI Class	Limitations	
1 - No significant limitation	B - brush/tree cover	N - high salinity
2 - Slight limitations	C - climate	P - excessive surface stoniness
3 - Moderate limitations	D - low permeability	R - shallowness to bedrock
4 - Severe limitations	E - erosion damage	S - high solidity
5 - Very severe limitations	F - poor fertility	T - adverse topography
6 - Production is not feasible	G - Steep slopes	U - prior earth moving
7 - No capability	H - temperature	V - high acid content
	I - flooding	W - excessive wetness/poor drainage
	J - field size/shape	X - deep organic deposit
	K - shallow profile development	Y - slowly permeable
	M - low moisture holding, adverse texture	Z - relatively impermeable

Division: 5
 Roll: 05214024
 File: PL20240074
 Printed: Apr 12, 2024
 Legal: A portion of SW-14-25-27-W4M

**Landowner
Circulation
Area**

Road Closure Proposal

To assess the proposed closure of a ±0.025 hectare (±0.062 acre) portion of Plan 2166W to facilitate future consolidation with Lot 1/4, Block 4, Plan 2166W within SE-14-25-27-W04M.

Legend

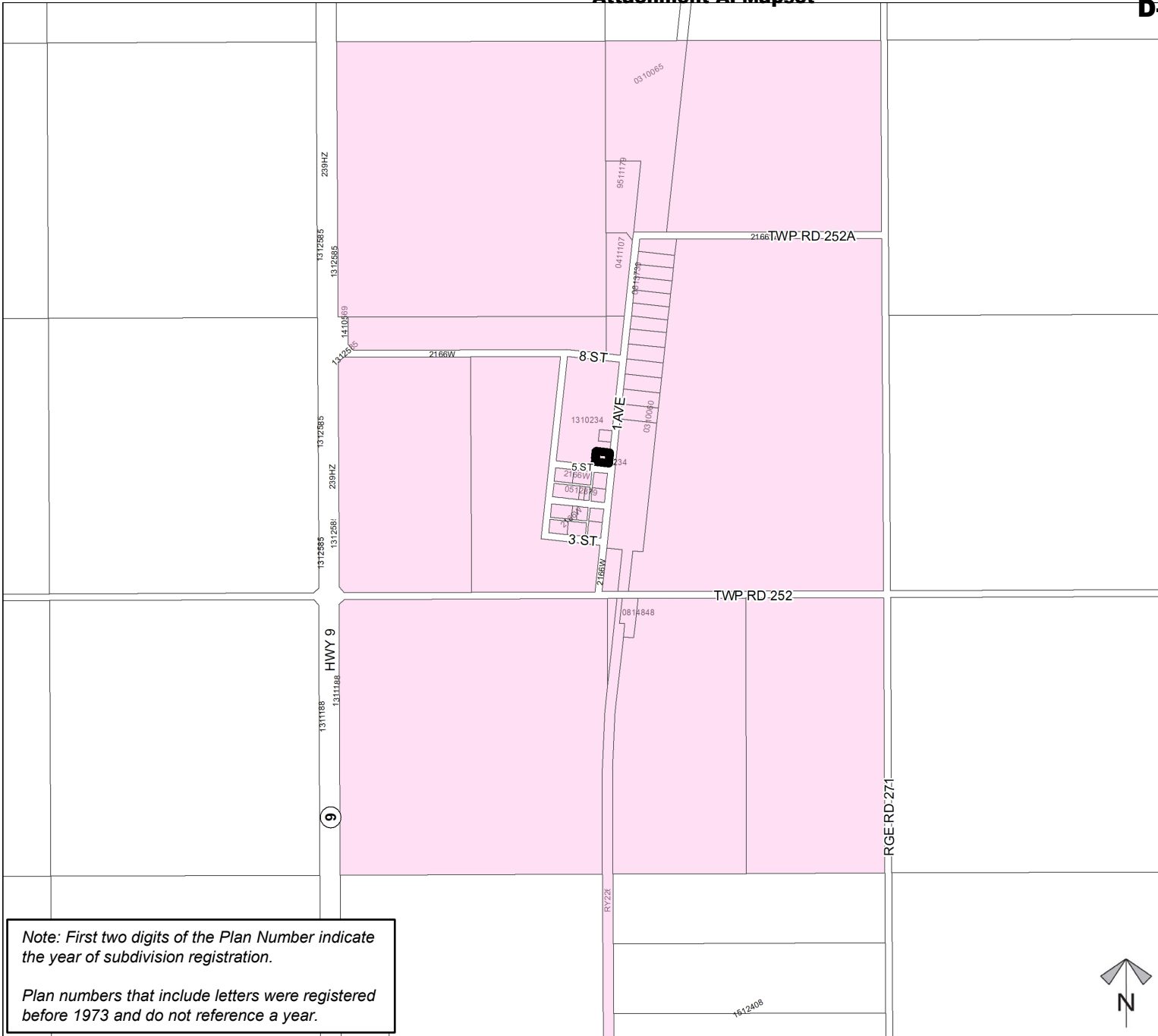
Support



Not Support



*Division: 5
Roll: 05214024
File: PL20240074
Printed: Apr 12, 2024
Legal: A portion of SW-14-25-27-W4M*



Note: First two digits of the Plan Number indicate the year of subdivision registration.

Plan numbers that include letters were registered before 1973 and do not reference a year.

HAMLET OF DALROY
 — ROCKY VIEW COUNTY, ALBERTA —

PLAN SHOWING PROPOSED ROAD AND LANE CLOSURE
 AFFECTING
 LANE AND 5th STREET, BLOCK 3, PLAN 2166 W.
 WITHIN
 S.W.1/4 SEC.14, TWP. 25, RGE. 27, W.4M. —
 — SCALE= 1:1500 — 2024 — GRANT W. WALLACE, A.L.S.



LEGEND:

Distances are in metres and decimals thereof.
 Area affected by this plan are shown thus...

Lane Area	= 189.3 sq.m.	
5th Street Area	= 63.2 sq.m.	
<hr/>		
Total Area	= 252.5 sq.m.	



Tentative Plan

Road Closure Proposal

To assess the proposed closure of a ±0.025 hectare (±0.062 acre) portion of Plan 2166W to facilitate future consolidation with Lot 1/4, Block 4, Plan 2166W within SE-14-25-27-W04M.

