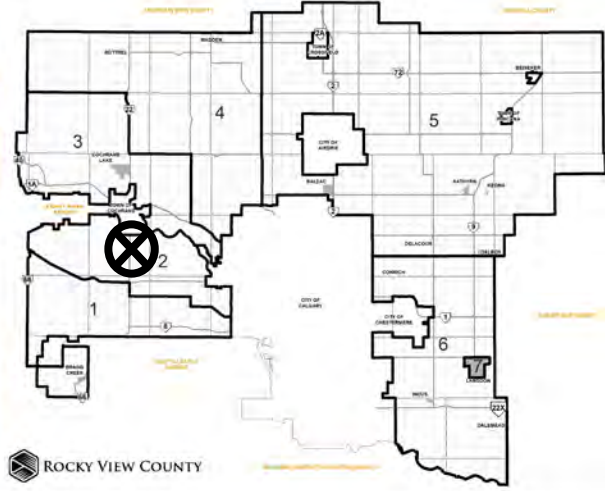




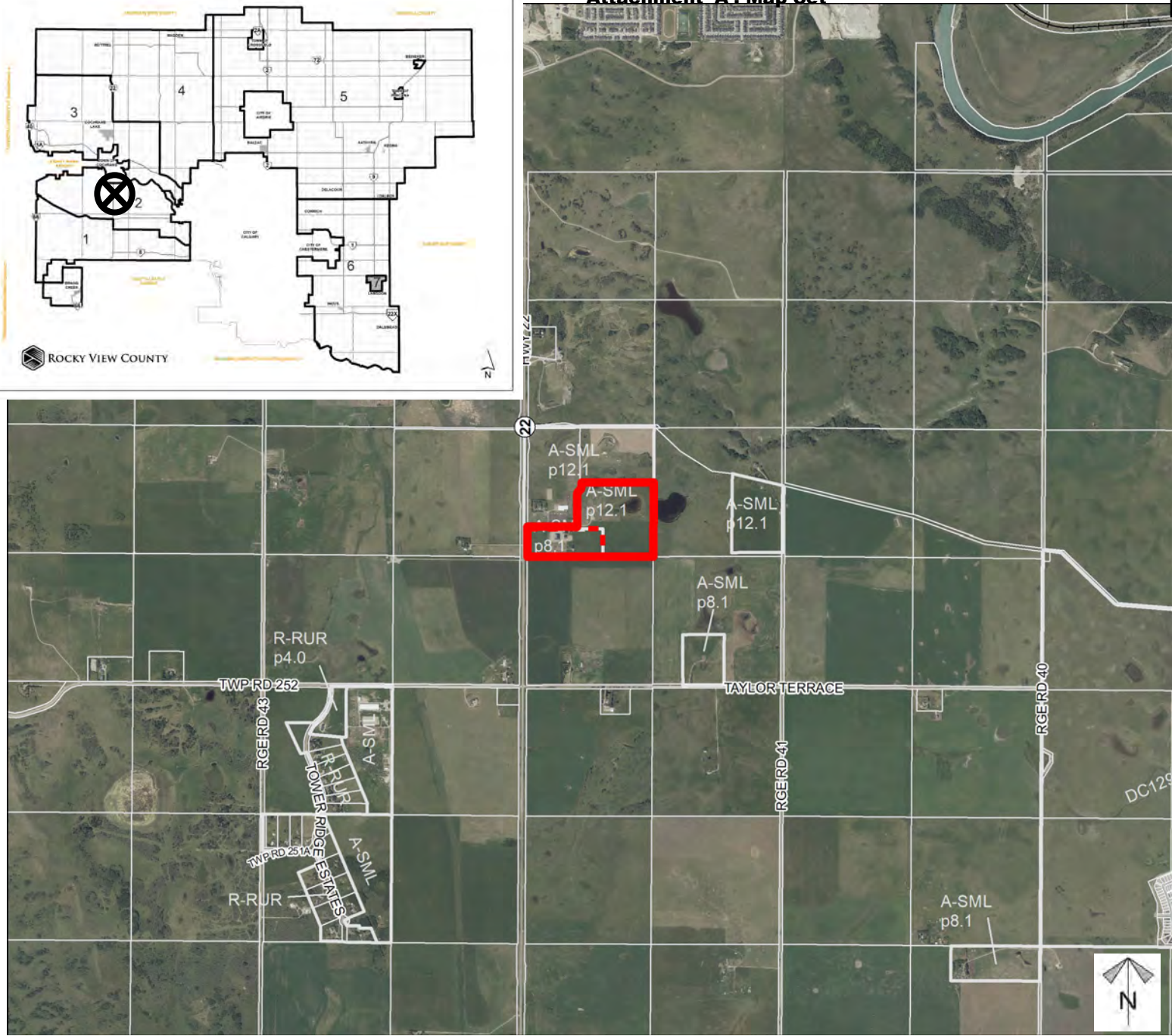
Location & Context

Subdivision Proposal

To create a ± 8.10 hectare (± 20.01 acre) parcel with a ± 19.63 hectare (± 48.51 acre) remainder.



ROCKY VIEW COUNTY



Division: 2
Roll: 05814006
File: PL20220220
Printed: Mar 21, 2024
Legal: Lot:3 Block:2
Plan:0513324 within NW-14-25-04-W05M

Development Proposal

Subdivision Proposal

To create a ± 8.10 hectare (± 20.01 acre) parcel with a ± 19.63 hectare (± 48.51 acre) remainder.

HWY 22 (22)

Lot 2
± 19.63 ha
(± 48.51 ac)

Lot 1
± 8.10 ha
(± 20.01 ac)



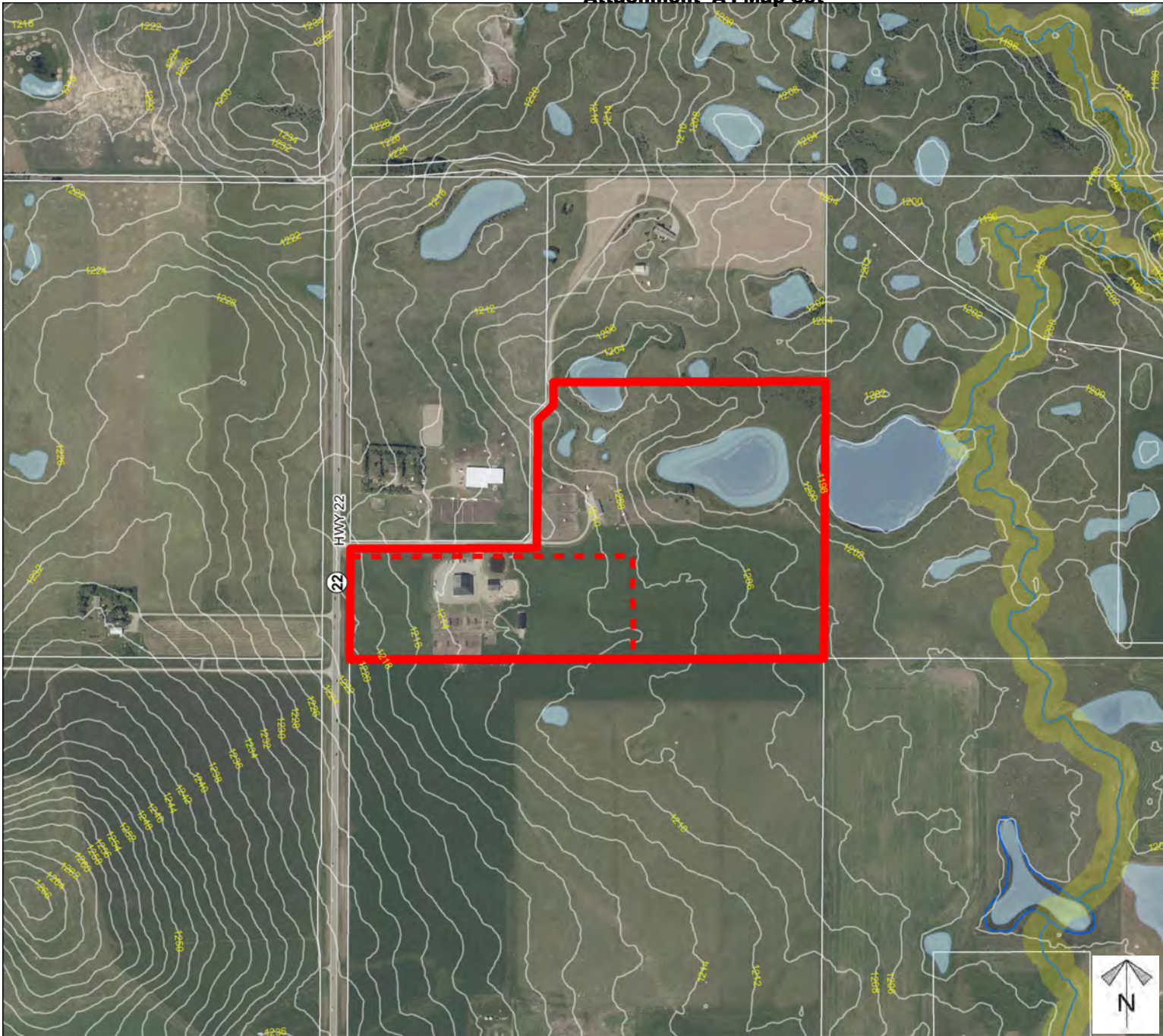
Division: 2
Roll: 05814006
File: PL20220220
Printed: Mar 21, 2024
Legal: Lot:3 Block:2
Plan:0513324 within NW-14-25-04-W05M



Environmental

Subdivision Proposal

To create a ± 8.10 hectare (± 20.01 acre) parcel with a ± 19.63 hectare (± 48.51 acre) remainder.



- Subject Lands
- Contour - 2 meters
- Riparian Setbacks
- Alberta Wetland Inventory
- Surface Water



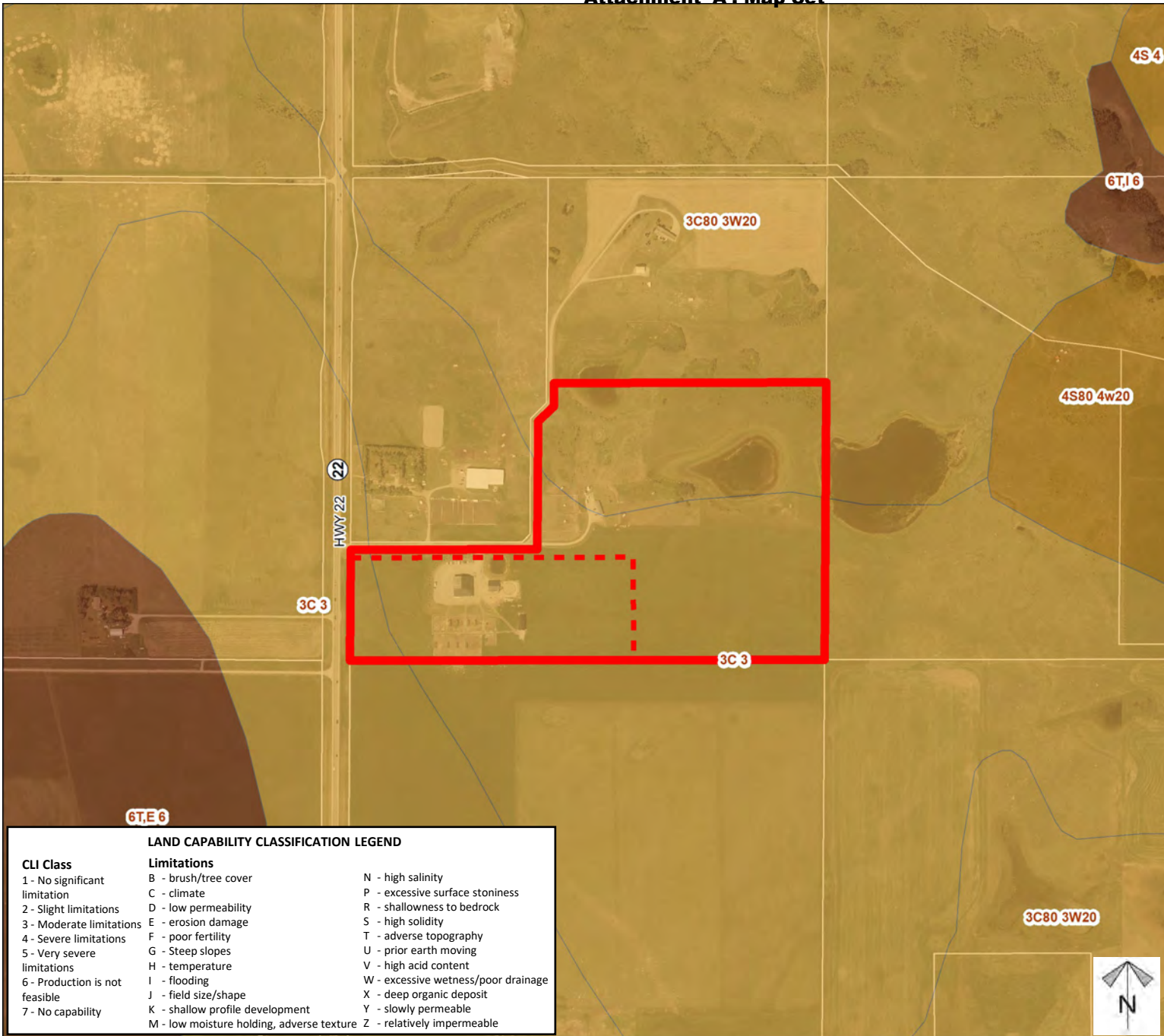
Division: 2
Roll: 05814006
File: PL20220220
Printed: Mar 21, 2024
Legal: Lot:3 Block:2
Plan:0513324 within NW-14-25-04-W05M



Soil Classifications

Subdivision Proposal

To create a ± 8.10 hectare (± 20.01 acre) parcel with a ± 19.63 hectare (± 48.51 acre) remainder.

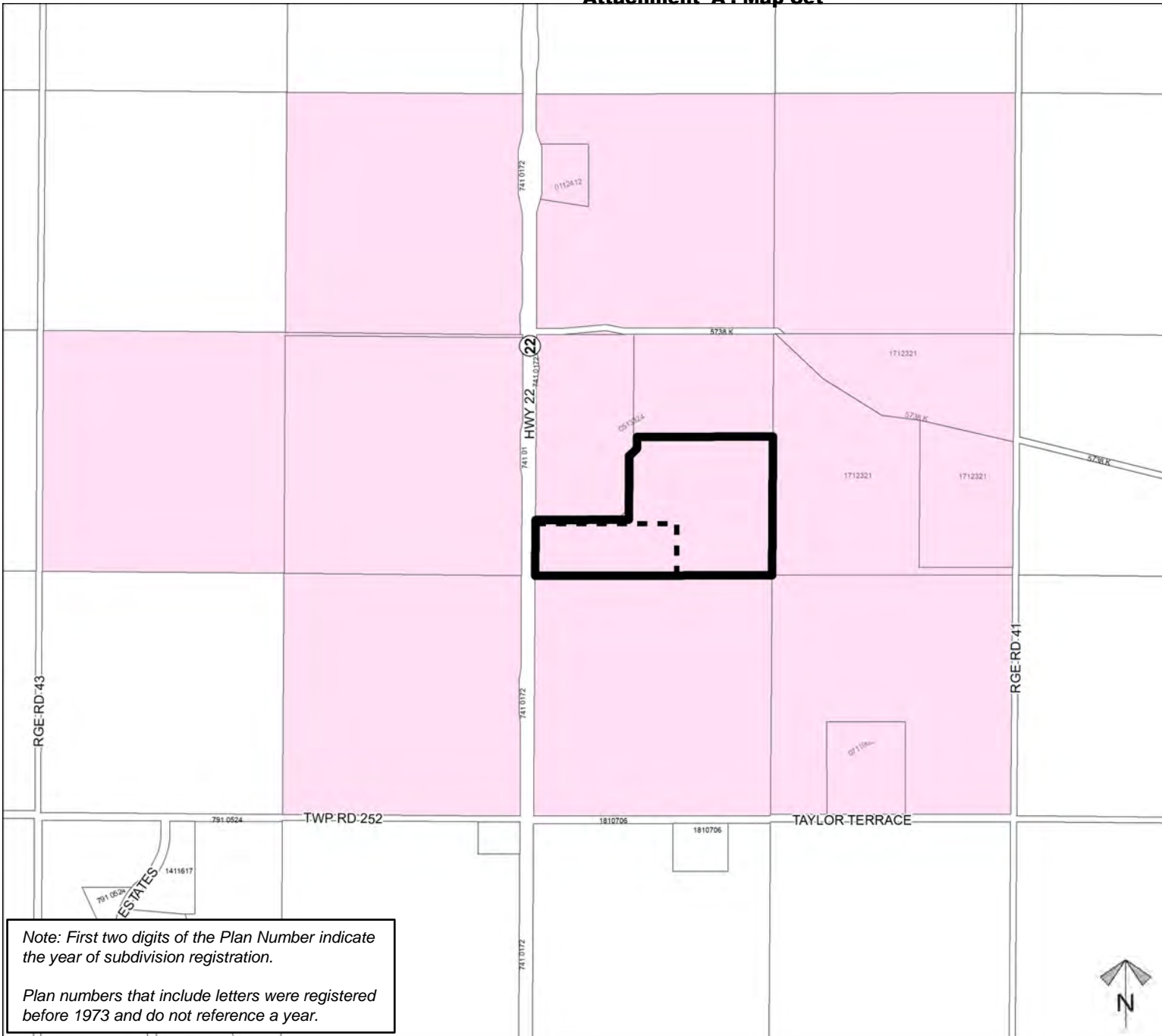


LAND CAPABILITY CLASSIFICATION LEGEND		
CLI Class	Limitations	
1 - No significant limitation	B - brush/tree cover	N - high salinity
2 - Slight limitations	C - climate	P - excessive surface stoniness
3 - Moderate limitations	D - low permeability	R - shallowness to bedrock
4 - Severe limitations	E - erosion damage	S - high solidity
5 - Very severe limitations	F - poor fertility	T - adverse topography
6 - Production is not feasible	G - Steep slopes	U - prior earth moving
7 - No capability	H - temperature	V - high acid content
	I - flooding	W - excessive wetness/poor drainage
	J - field size/shape	X - deep organic deposit
	K - shallow profile development	Y - slowly permeable
	M - low moisture holding, adverse texture	Z - relatively impermeable

Division: 2
 Roll: 05814006
 File: PL20220220
 Printed: Mar 21, 2024
 Legal: Lot:3 Block:2
 Plan:0513324 within NW-14-25-04-W05M

Landowner Circulation Area

Subdivision Proposal
To create a ± 8.10 hectare
(± 20.01 acre) parcel with
a ± 19.63 hectare (± 48.51
acre) remainder.



Legend

Support



Not Support



Note: First two digits of the Plan Number indicate the year of subdivision registration.

Plan numbers that include letters were registered before 1973 and do not reference a year.

Division: 2
Roll: 05814006
File: PL20220220
Printed: Mar 21, 2024
Legal: Lot:3 Block:2
Plan:0513324 within NW-14-25-04-W05M

