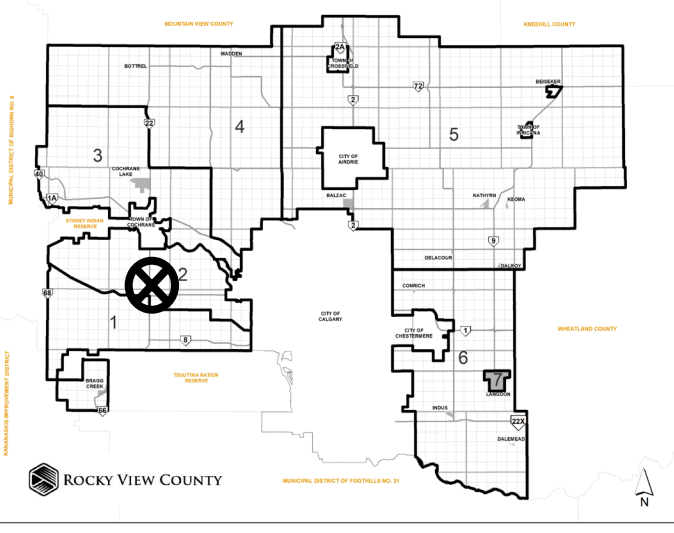


Location & Context

Redesignation Proposal

To redesignate a portion of the subject lands from Agriculture, General District (A-GEN) to Industrial, Light District (I-LHT) to facilitate future development of an RV Storage Facility.

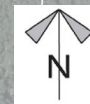


Division: 2
 Roll: 05802007
 File: PL20230099
 Printed: Sept 13, 2023
 Legal: A portion of SW-2-25-4-W5M

Development Proposal

Redesignation Proposal

To redesignate a portion of the subject lands from Agriculture, General District (A-GEN) to Industrial, Light District (I-LHT) to facilitate future development of an RV Storage Facility.

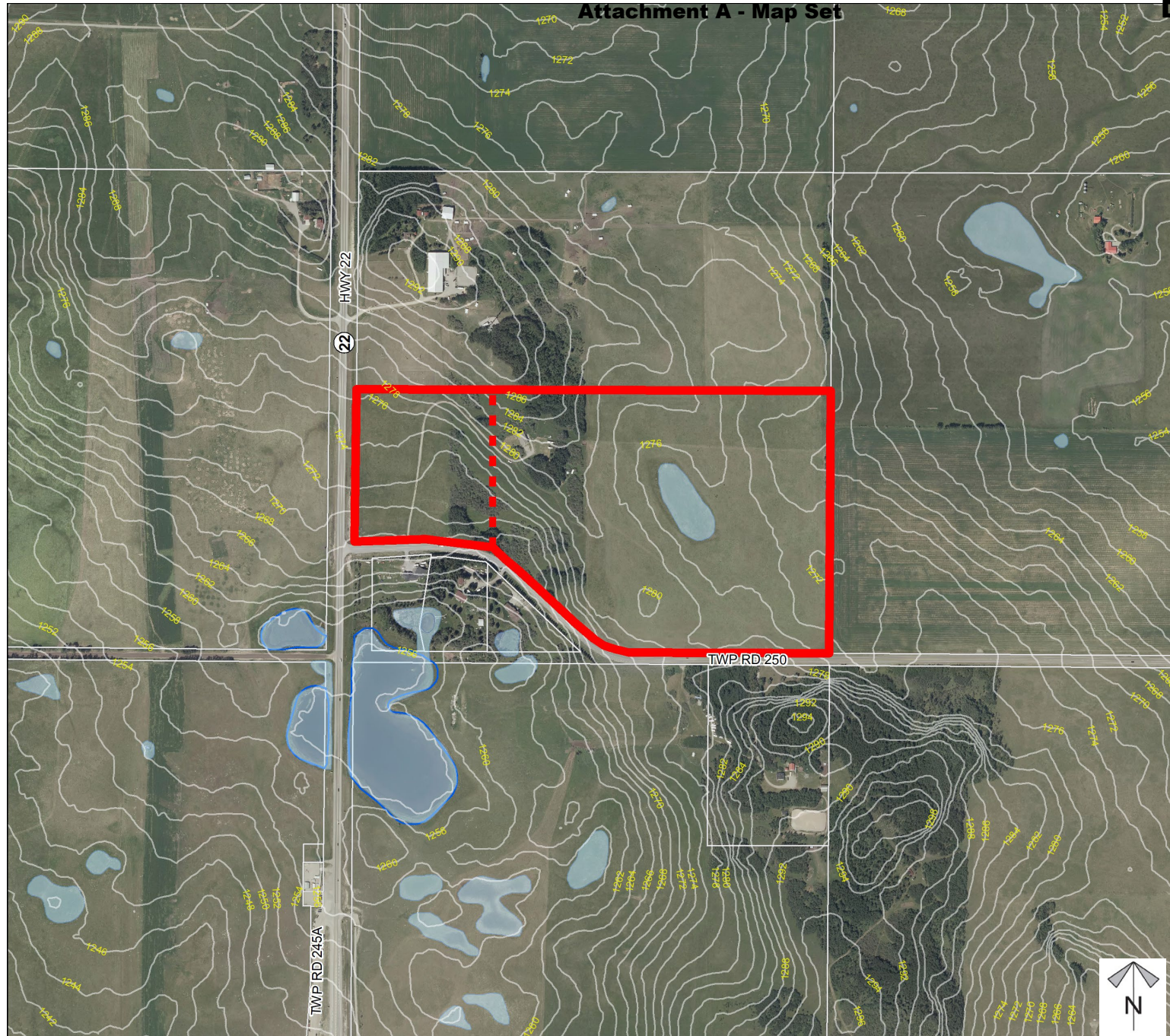


Division: 2
Roll: 05802007
File: PL20230099
Printed: Sept 13, 2023
Legal: A portion of SW-2-25-4-W5M

Environmental

Redesignation Proposal

To redesignate a portion of the subject lands from Agriculture, General District (A-GEN) to Industrial, Light District (I-LHT) to facilitate future development of an RV Storage Facility.



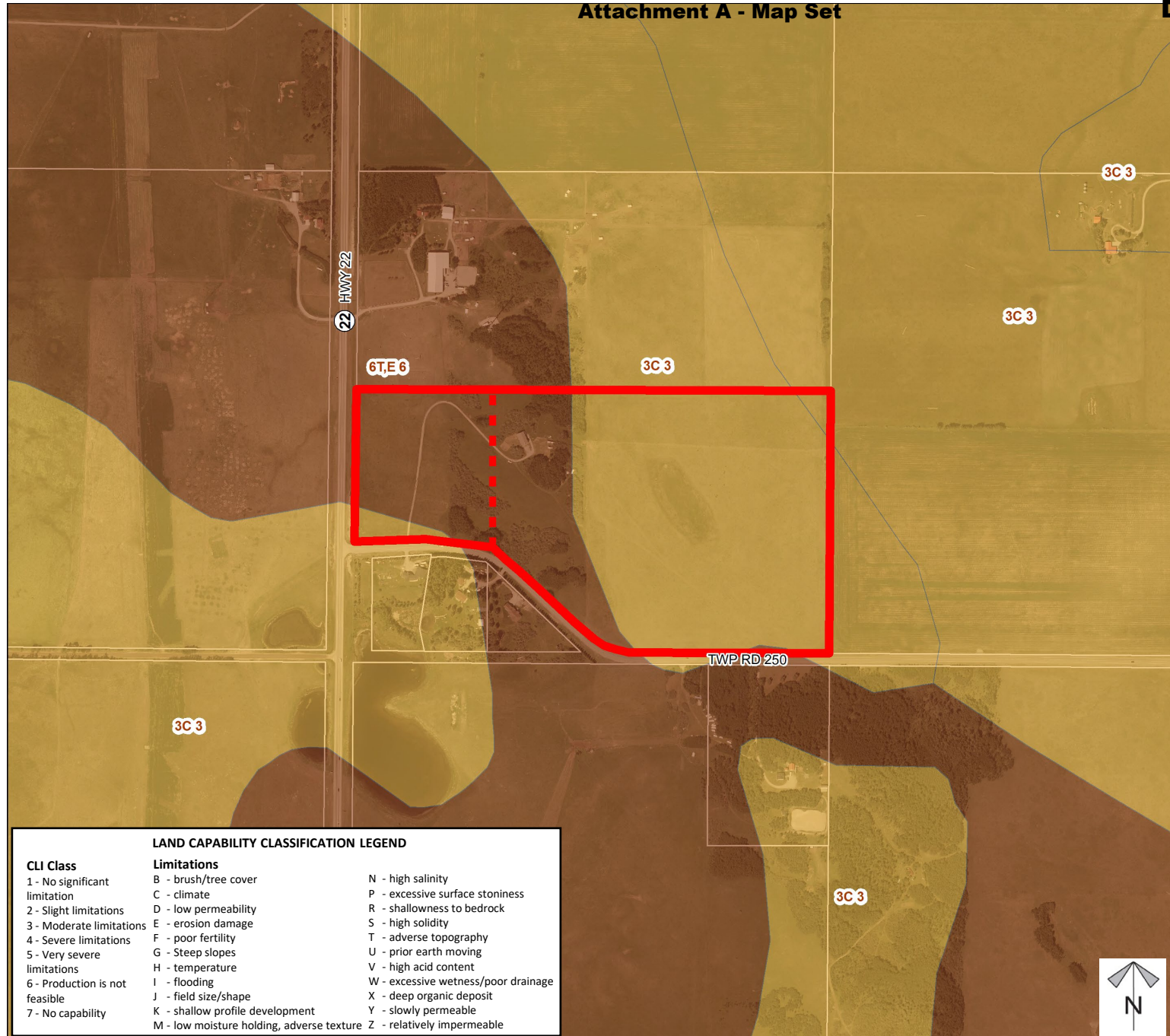
-  Subject Lands
-  Contour - 2 meters
-  Riparian Setbacks
-  Alberta Wetland Inventory
-  Surface Water

Division: 2
Roll: 05802007
File: PL20230099
Printed: Sept 13, 2023
Legal: A portion of SW-2-25-4-W5M

Soil Classifications

Redesignation Proposal

To redesignate a portion of the subject lands from Agriculture, General District (A-GEN) to Industrial, Light District (I-LHT) to facilitate future development of an RV Storage Facility.



LAND CAPABILITY CLASSIFICATION LEGEND

CLI Class	Limitations	
1 - No significant limitation	B - brush/tree cover	N - high salinity
2 - Slight limitations	C - climate	P - excessive surface stoniness
3 - Moderate limitations	D - low permeability	R - shallowness to bedrock
4 - Severe limitations	E - erosion damage	S - high solidity
5 - Very severe limitations	F - poor fertility	T - adverse topography
6 - Production is not feasible	G - Steep slopes	U - prior earth moving
7 - No capability	H - temperature	V - high acid content
	I - flooding	W - excessive wetness/poor drainage
	J - field size/shape	X - deep organic deposit
	K - shallow profile development	Y - slowly permeable
	M - low moisture holding, adverse texture	Z - relatively impermeable


Division: 2
 Roll: 05802007
 File: PL20230099
 Printed: Sept 13, 2023
 Legal: A portion of SW-2-25-4-W5M

Landowner Circulation Area

Redesignation Proposal

To redesignate a portion of the subject lands from Agriculture, General District (A-GEN) to Industrial, Light District (I-LHT) to facilitate future development of an RV Storage Facility.

Legend

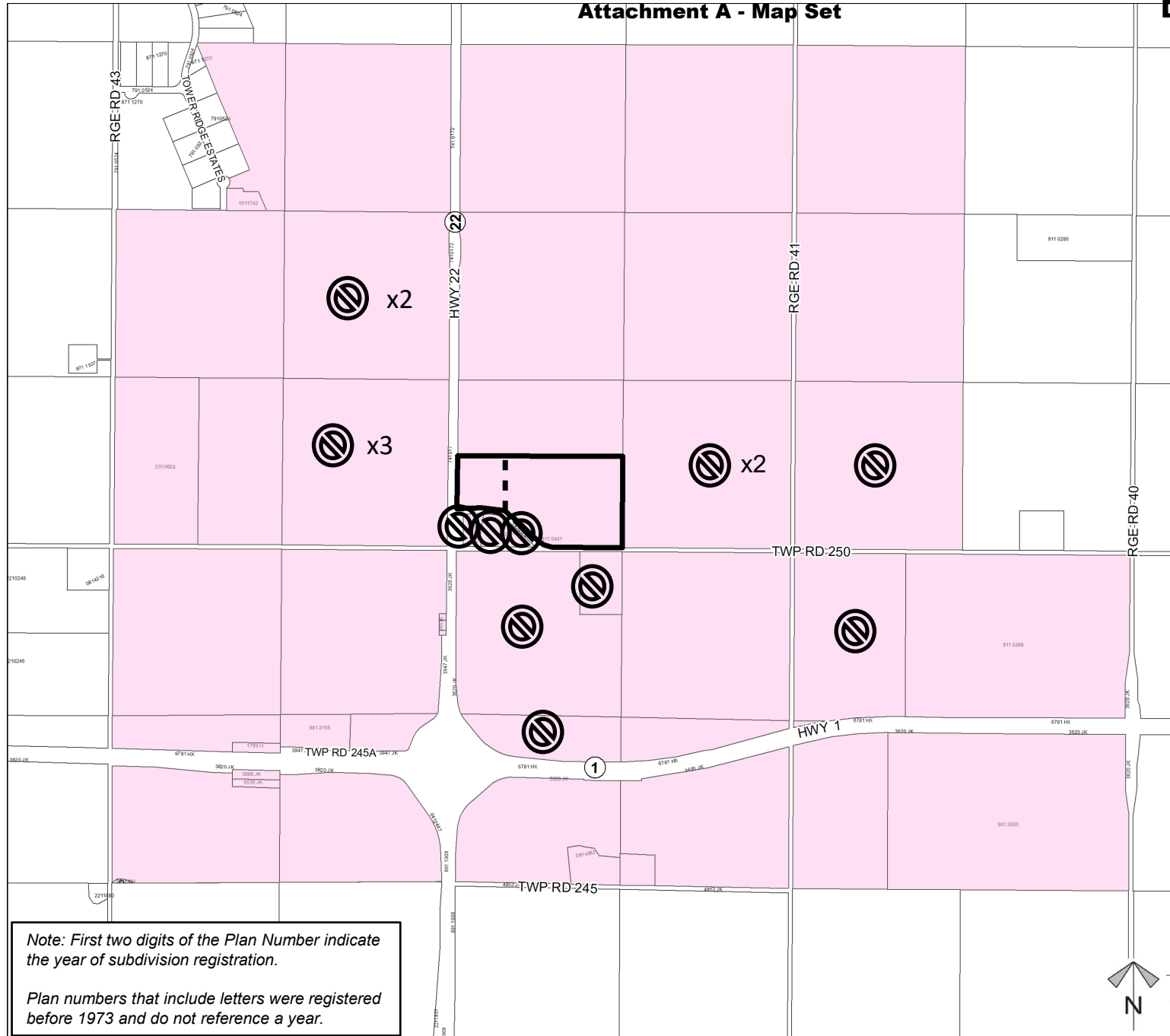
Support 

- Total of 15 letters received
- 6 outside circulation area
- 9 outside RVC

Not Support 

- Total of 16 letters received
- 1 outside circulation area, 1 duplicate

Division: 2
Roll: 05802007
File: PL20230099
Printed: Sept 13, 2023
Legal: A portion of SW-2-25-4-W5M



Note: First two digits of the Plan Number indicate the year of subdivision registration.

Plan numbers that include letters were registered before 1973 and do not reference a year.

