

# Location & Context

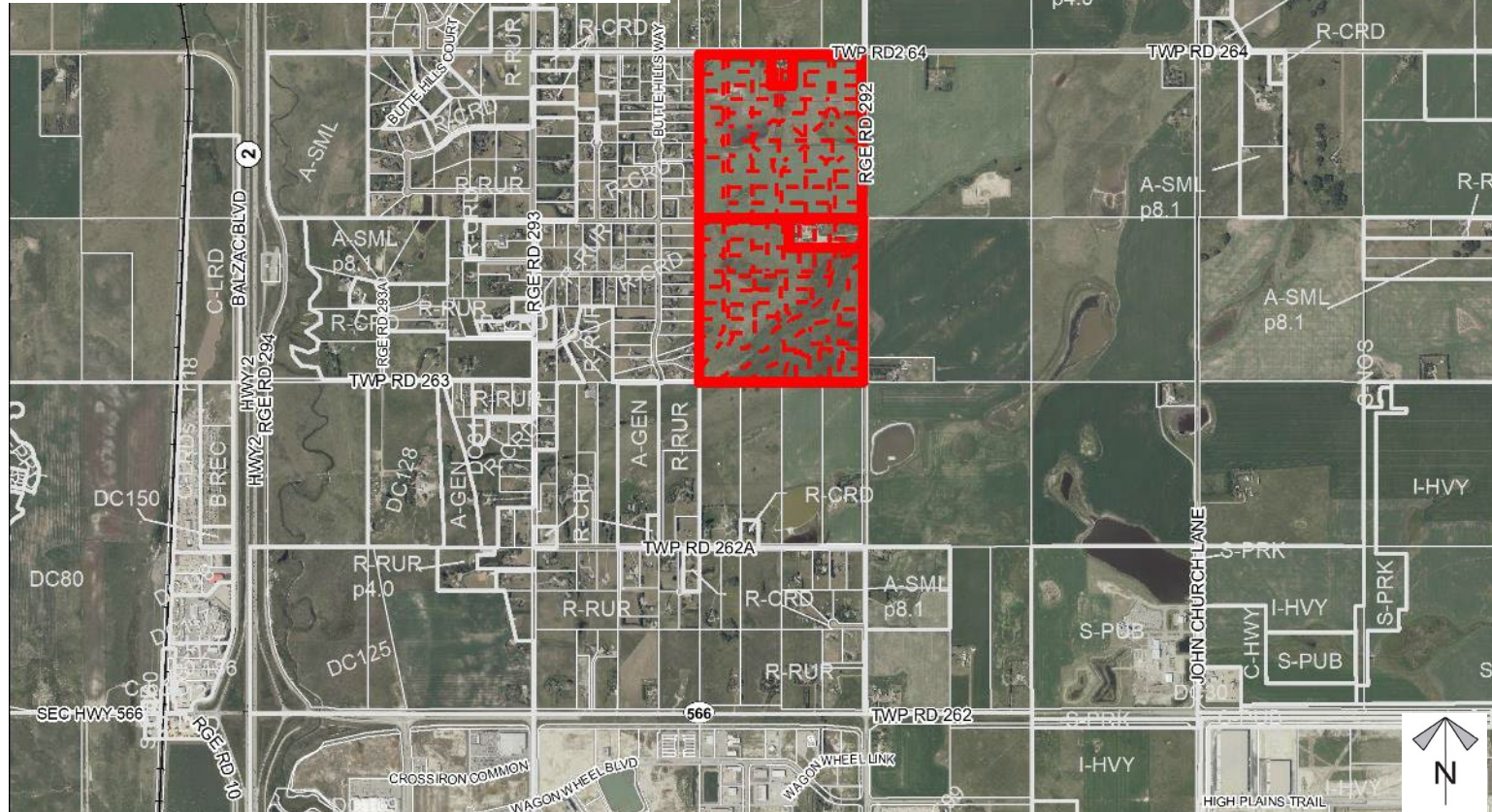
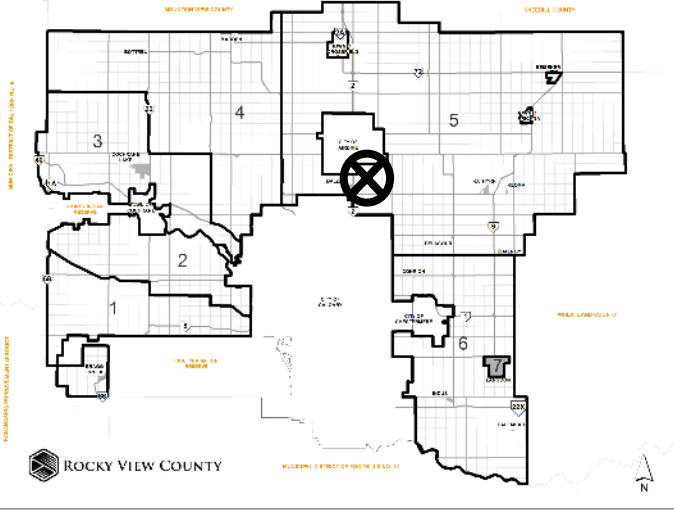
## Conceptual Scheme Proposal

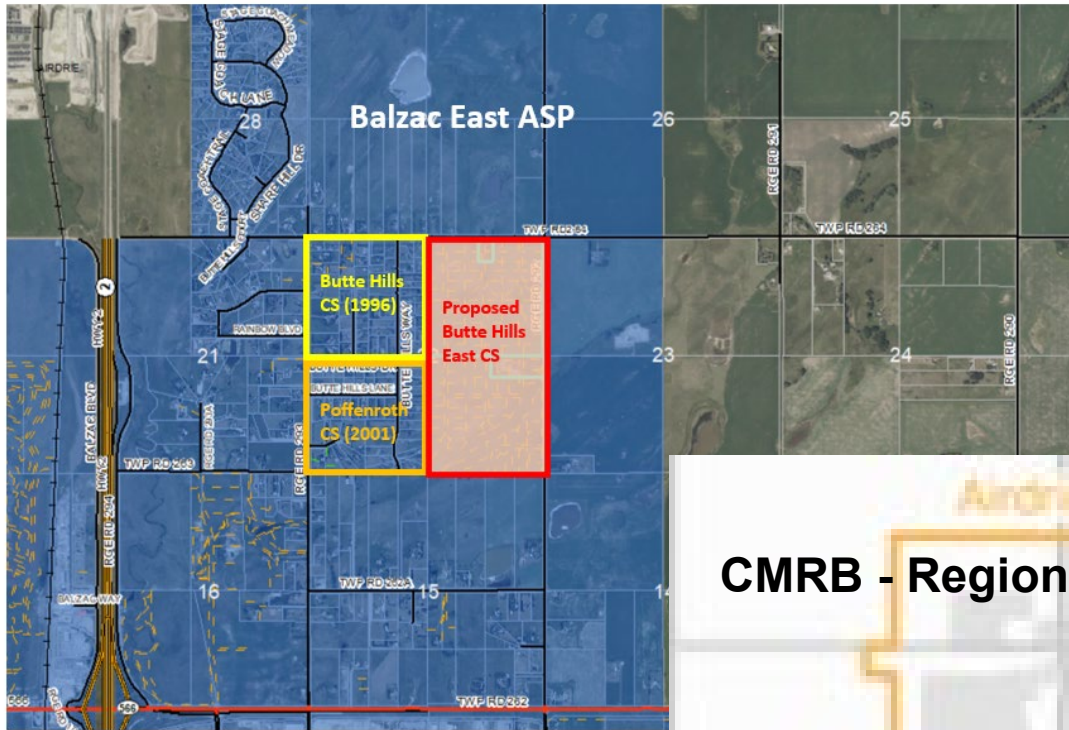
PL20210134 - To consider the Butte Hills East Conceptual Scheme that will provide the policy framework to guide future redesignation and subdivision applications for the development of a country residential community.

## Redesignation Proposal

PL20210135 - To redesignate NE&SE-22-26-29-W04M from Agriculture, General District (A-GEN) to Residential, Country Residential District (R-CRD), Special, Public Service District (S-PUB), Special, Parks and Recreation District (S-PRK), and Special, Natural Open Space District (S-NOS), in order to facilitate the creation of 109 residential lots with servicing and amenities.

Division: 5  
Roll: 06422114, 06422018, 06422001, 06422004  
File: PL20210134 135  
Printed: May 7, 2024  
Legal: 1/2 East-Sec 22-26-29-W4M





### Balzac East ASP & Regional Growth Plan

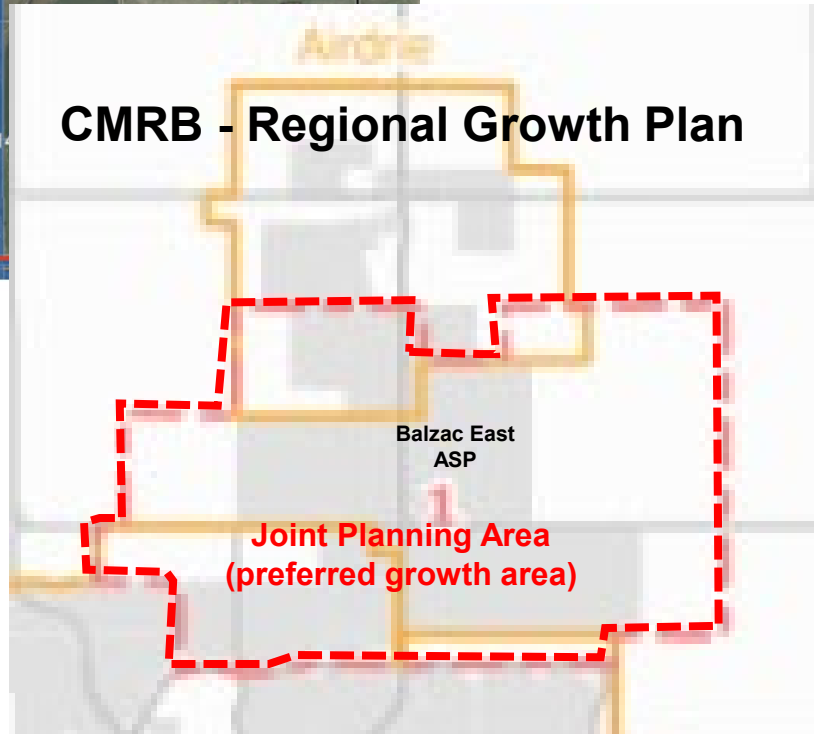
#### Conceptual Scheme Proposal

PL20210134 - To consider the Butte Hills East Conceptual Scheme that will provide the policy framework to guide future redesignation and subdivision applications for the development of a country residential community.

#### Redesignation Proposal

PL20210135 - To redesignate NE&SE-22-26-29-W04M from Agriculture, General District (A-GEN) to Residential, Country Residential District (R-CRD), Special, Public Service District (S-PUB), Special, Parks and Recreation District (S-PRK), and Special, Natural Open Space District (S-NOS), in order to facilitate the creation of 109 residential lots with servicing and amenities.

### CMRB - Regional Growth Plan

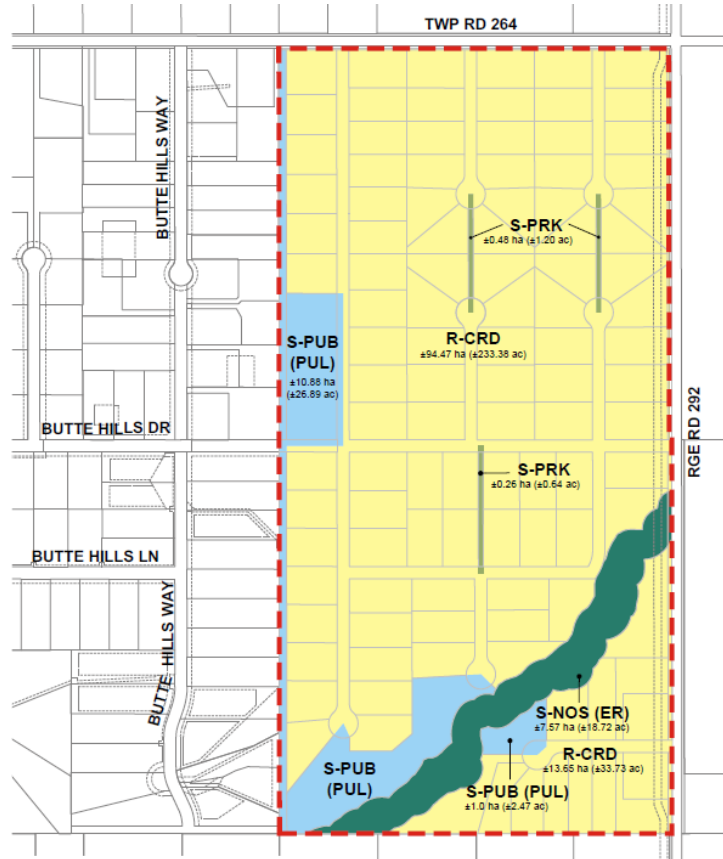


Division: 5  
Roll: 06422114, 06422018, 06422001, 06422004  
File: PL20210134\_135  
Printed: May 7, 2024  
Legal: 1/2 East-Sec 22-26-29-W4M

**Proposed Butte Hills East CS  
 Development Concept**



**Proposed Butte Hills East CS  
 Land Use**



- R-CRD - Residential: Country Residential District
- S-PUB (PUL) - Special: Public Service District
- S-NOS (ER) - Special: Natural Open Space District

**Development  
 Proposal**

**Conceptual Scheme  
 Proposal**

PL20210134 - To consider the Butte Hills East Conceptual Scheme that will provide the policy framework to guide future redesignation and subdivision applications for the development of a country residential community.

**Redesignation Proposal**

PL20210135 - To redesignate NE&SE-22-26-29-W04M from Agriculture, General District (A-GEN) to Residential, Country Residential District (R-CRD), Special, Public Service District (S-PUB), Special, Parks and Recreation District (S-PRK), and Special, Natural Open Space District (S-NOS), in order to facilitate the creation of 109 residential lots with servicing and amenities.

*Division: 5*  
*Roll: 06422114, 06422018, 06422001, 06422004*  
*File: PL20210134\_135*  
*Printed: May 7, 2024*  
*Legal: 1/2 East-Sec 22-26-29-W4M*

# Development Proposal

## Conceptual Scheme Proposal

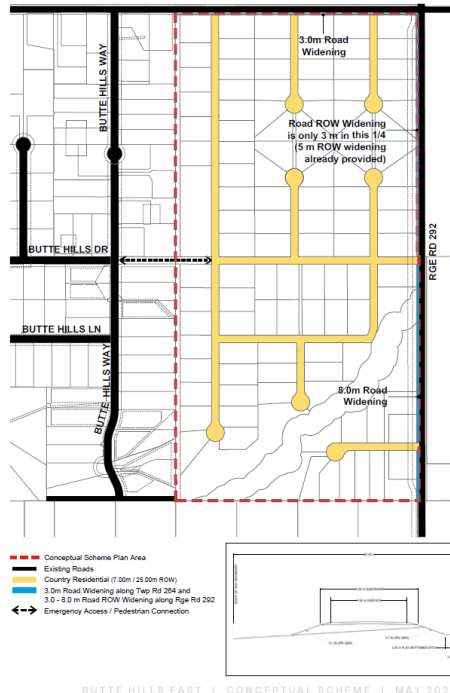
PL20210134 - To consider the Butte Hills East Conceptual Scheme that will provide the policy framework to guide future redesignation and subdivision applications for the development of a country residential community.

## Redesignation Proposal

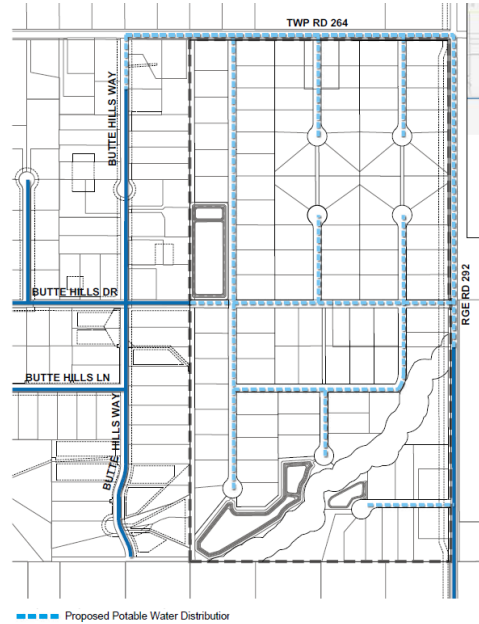
PL20210135 - To redesignate NE&SE-22-26-29-W04M from Agriculture, General District (A-GEN) to Residential, Country Residential District (R-CRD), Special, Public Service District (S-PUB), Special, Parks and Recreation District (S-PRK), and Special, Natural Open Space District (S-NOS), in order to facilitate the creation of 109 residential lots with servicing and amenities.

Division: 5  
Roll: 06422114, 06422018, 06422001, 06422004  
File: PL20210134\_135  
Printed: May 7, 2024  
Legal: 1/2 East-Sec 22-26-29-W4M

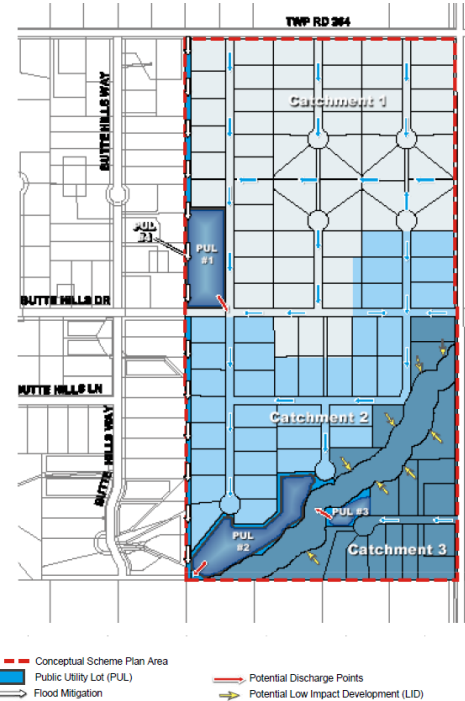
### Proposed Transportation



### Proposed Water Supply



### Proposed Stormwater Management



Environmental

Conceptual Scheme Proposal

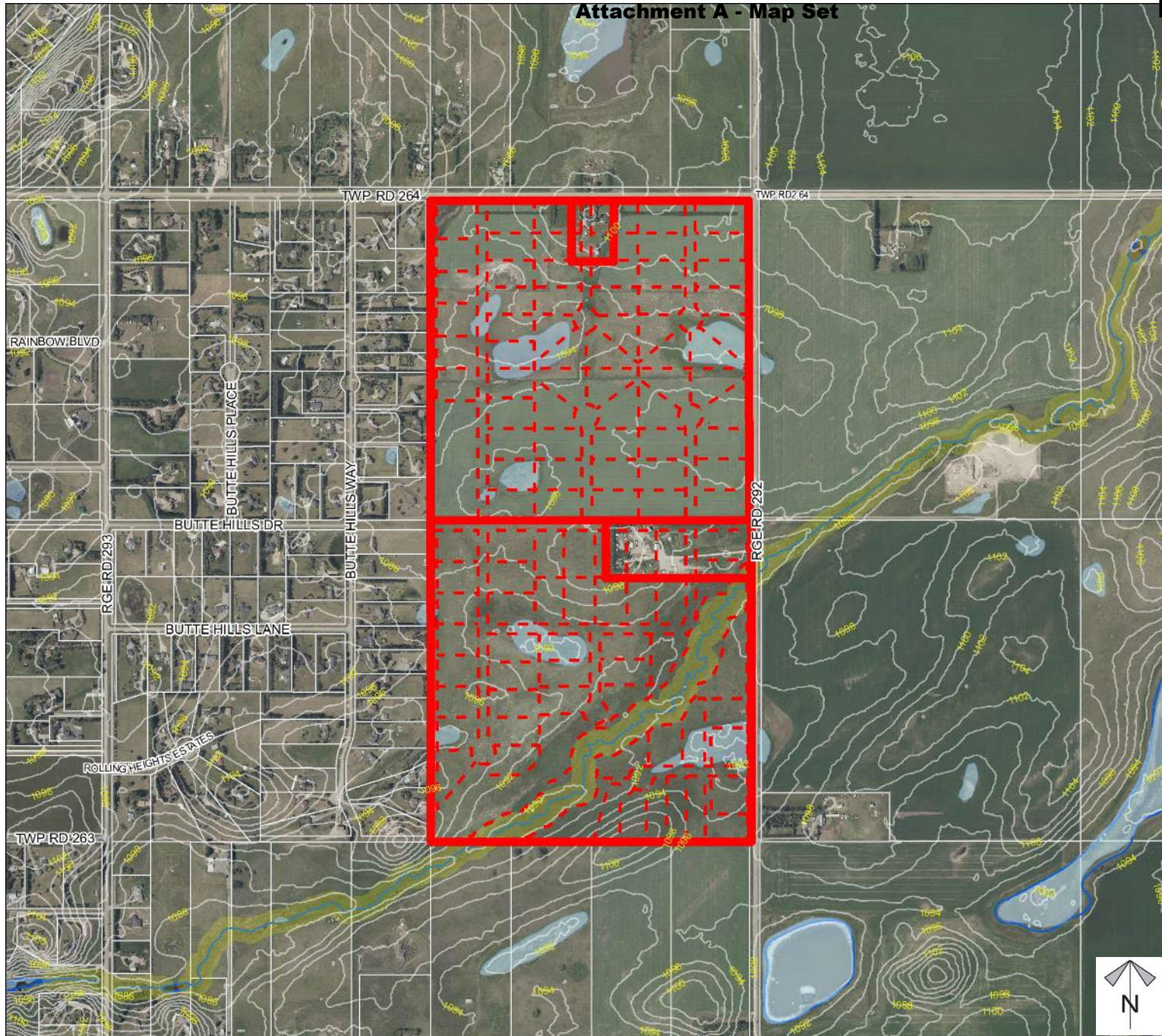
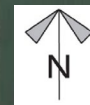
PL20210134 - To consider the Butte Hills East Conceptual Scheme that will provide the policy framework to guide future redesignation and subdivision applications for the development of a country residential community.

Redesignation Proposal

PL20210135 - To redesignate NE&SE-22-26-29-W04M from Agriculture, General District (A-GEN) to Residential, Country Residential District (R-CRD).

-  Subject Lands
  -  Contour - 2 meters
  -  Riparian Setbacks
  -  Alberta Wetland Inventory
  -  Surface Water
- arteries.

Division: 5  
Roll: 06422114, 06422018,  
06422001, 06422004  
File: PL20210134\_135  
Printed: May 7, 2024  
Legal: 1/2 East-Sec 22-26-29-W4M



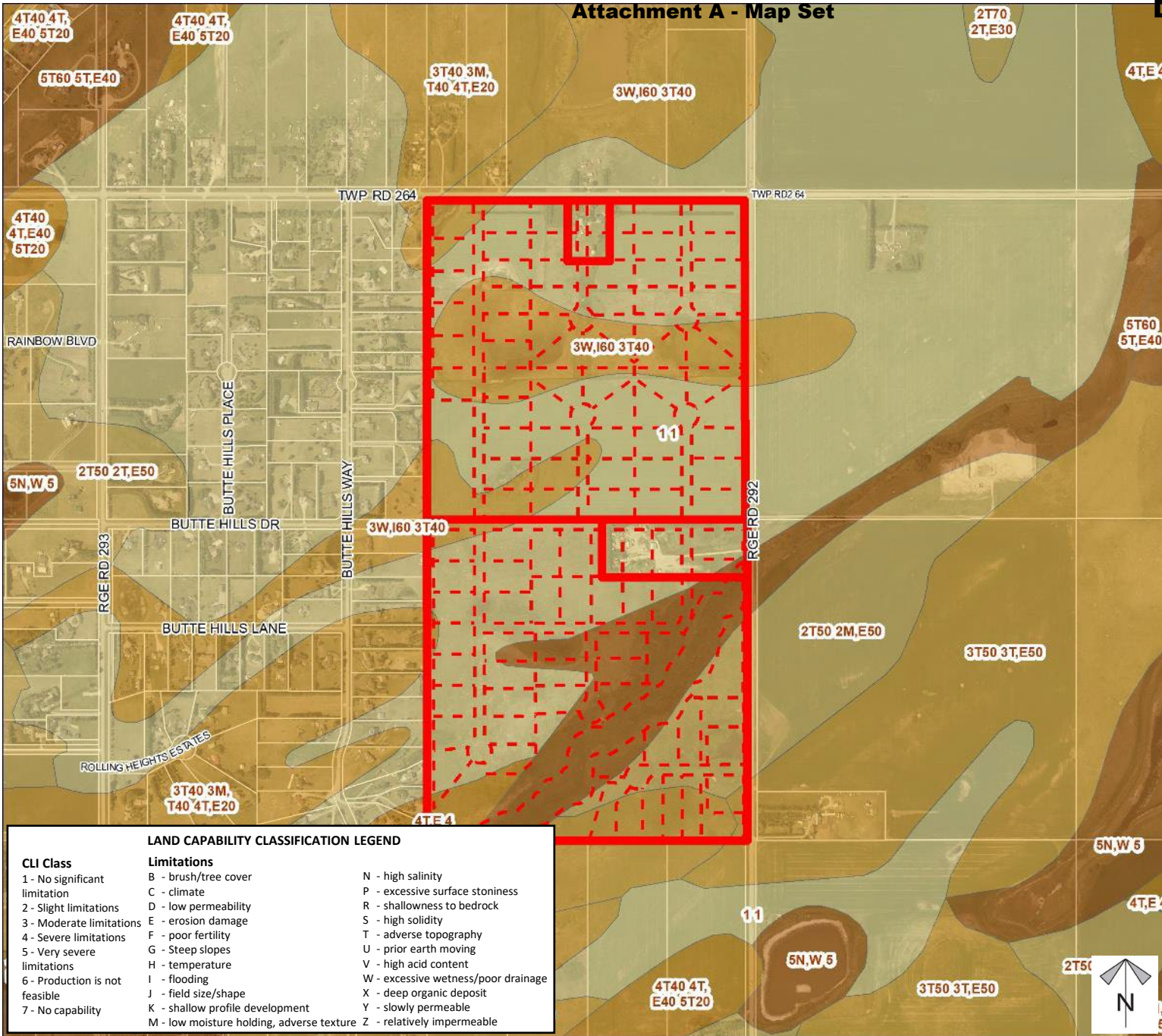
# Soil Classifications

## Conceptual Scheme Proposal

PL20210134 - To consider the Butte Hills East Conceptual Scheme that will provide the policy framework to guide future redesignation and subdivision applications for the development of a country residential community.

## Redesignation Proposal

PL20210135 - To redesignate NE&SE-22-26-29-W04M from Agriculture, General District (A-GEN) to Residential, Country Residential District (R-CRD), Special, Public Service District (S-PUB), Special, Parks and Recreation District (S-PRK), and Special, Natural Open Space District (S-NOS), in order to facilitate the creation of 109 residential lots with servicing and amenities.



**LAND CAPABILITY CLASSIFICATION LEGEND**

CLI Class	Limitations	
1 - No significant limitation	B - brush/tree cover	N - high salinity
2 - Slight limitations	C - climate	P - excessive surface stoniness
3 - Moderate limitations	D - low permeability	R - shallowness to bedrock
4 - Severe limitations	E - erosion damage	S - high solidity
5 - Very severe limitations	F - poor fertility	T - adverse topography
6 - Production is not feasible	G - Steep slopes	U - prior earth moving
7 - No capability	H - temperature	V - high acid content
	I - flooding	W - excessive wetness/poor drainage
	J - field size/shape	X - deep organic deposit
	K - shallow profile development	Y - slowly permeable
	M - low moisture holding, adverse texture	Z - relatively impermeable

Division: 5  
 Roll: 06422114, 06422018, 06422001, 06422004  
 File: PL20210134\_135  
 Printed: May 7, 2024  
 Legal: 1/2 East-Sec 22-26-29-W4M

# Landowner Circulation Area



## Conceptual Scheme Proposal

PL20210134 - To consider the Butte Hills East Conceptual Scheme that will provide the policy framework to guide future redesignation and subdivision applications for the development of a country residential community.

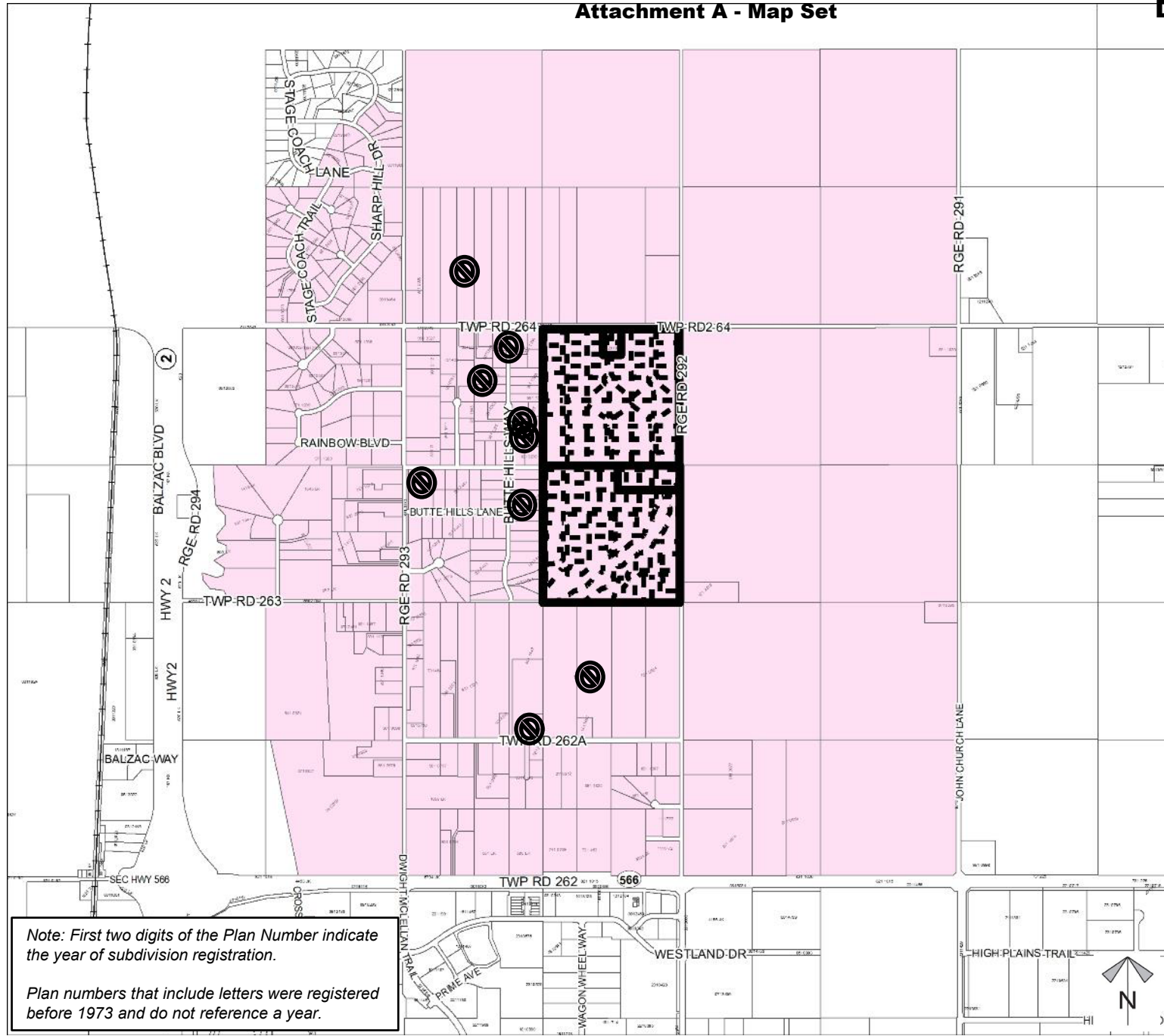
## Redesignation Proposal

PL20210135 - To redesignate NE&SE-22-26-29-W04M from Agriculture, General District (A-GEN) to Residential, Country Residential District (R-CRD), Special, Public Service District (S-PUB), Special, Parks and Recreation District (S-PRK), and Special, Natural Open Space District (S-NOS), in order to facilitate the creation of 109 residential lots with servicing and amenities.

### Legend

- Support 
- Not Support (9) 

Division: 5  
Roll: 06422114, 06422018, 06422001, 06422004  
File: PL20210134\_135  
Printed: May 7, 2024  
Legal: 1/2 East-Sec 22-26-29-W4M



Note: First two digits of the Plan Number indicate the year of subdivision registration.

Plan numbers that include letters were registered before 1973 and do not reference a year.

