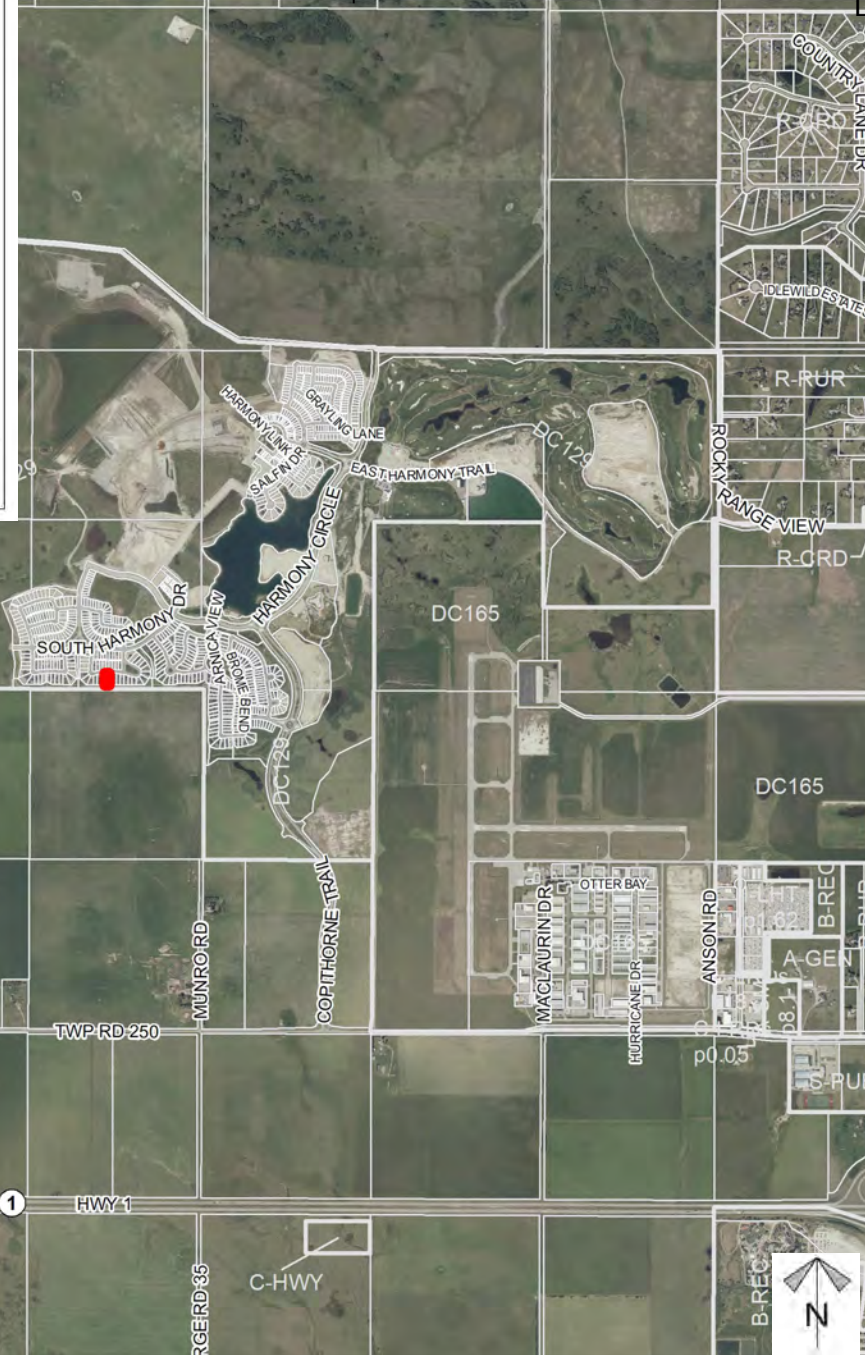
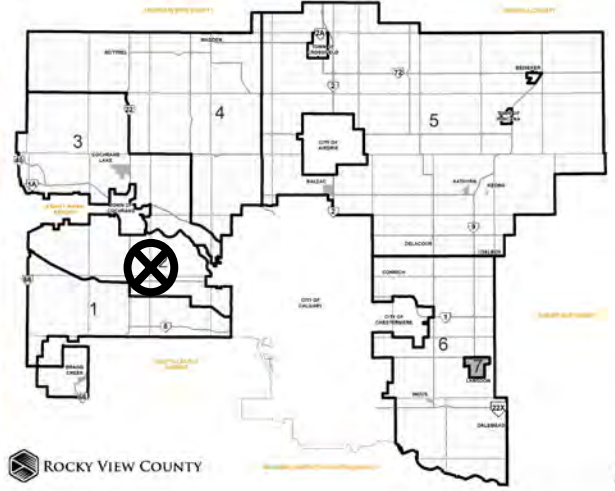


Location & Context

Redesignation Proposal

To amend Direct Control Bylaw C-6688-2008 (DC-129) to reduce the minimum side yard setback requirement from 1.20 metres (3.94 feet) to 0.62 metres (2.03 feet) on Lot 2, Block 3, Plan 1013437 within SE-07-25-03-W05M.

Division: 2
Roll: 05707078
File: PL20230151
Printed: December 18, 2023
Legal: A portion of SE-7-25-3-W5M



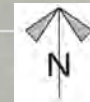
Development Proposal

Redesignation Proposal

To amend Direct Control Bylaw C-6688-2008 (DC-129) to reduce the minimum side yard setback requirement from 1.20 metres (3.94 feet) to 0.62 metres (2.03 feet) on Lot 2, Block 3, Plan 1013437 within SE-07-25-03-W05M.



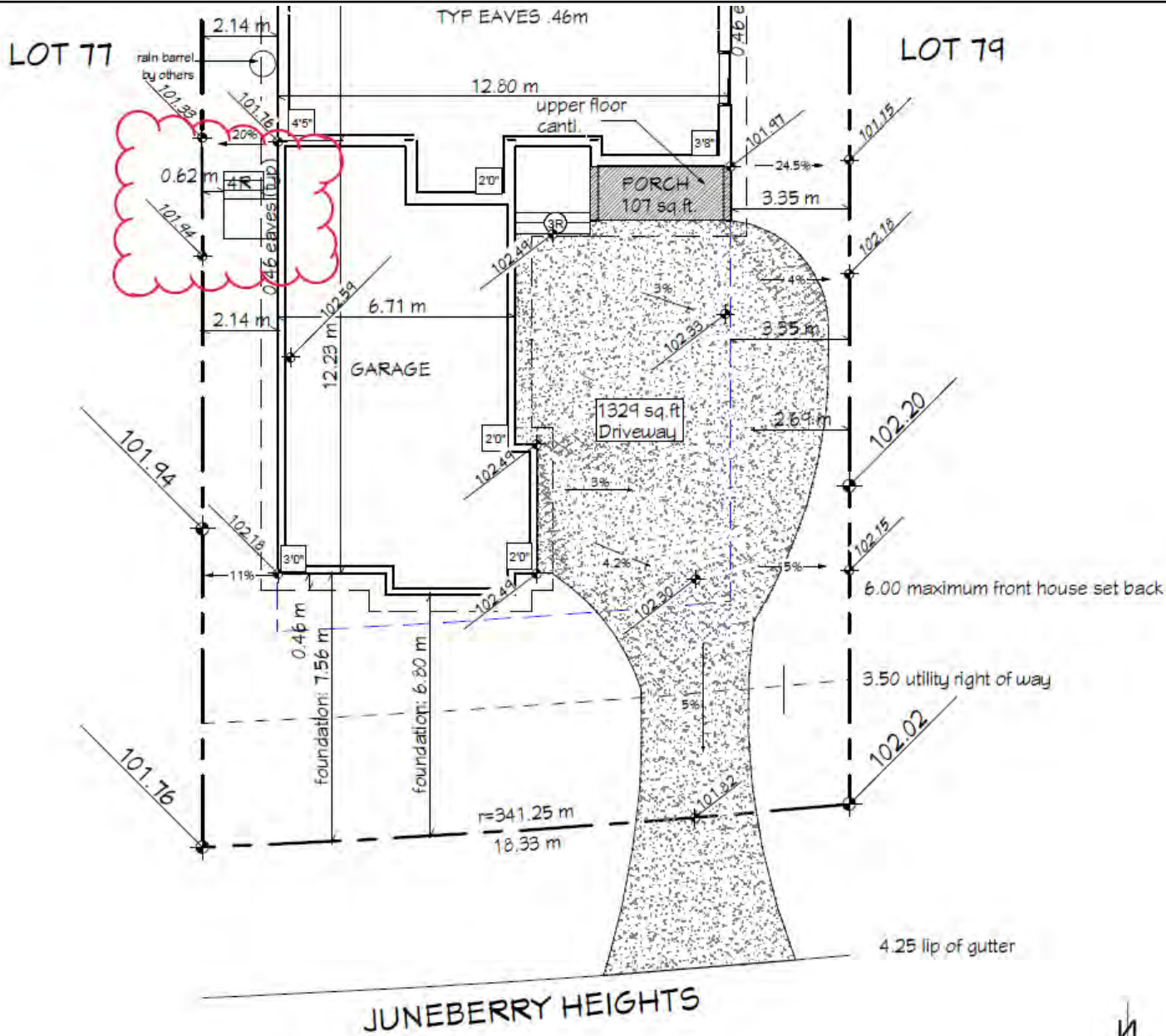
Division: 2
Roll: 05707078
File: PL20230151
Printed: December 18, 2023
Legal: A portion of SE-7-25-3-W5M



Development Proposal

Redesignation Proposal

To amend Direct Control Bylaw C-6688-2008 (DC-129) to reduce the minimum side yard setback requirement from 1.20 metres (3.94 feet) to 0.62 metres (2.03 feet) on Lot 2, Block 3, Plan 1013437 within SE-07-25-03-W05M.



JUNEBERRY HEIGHTS

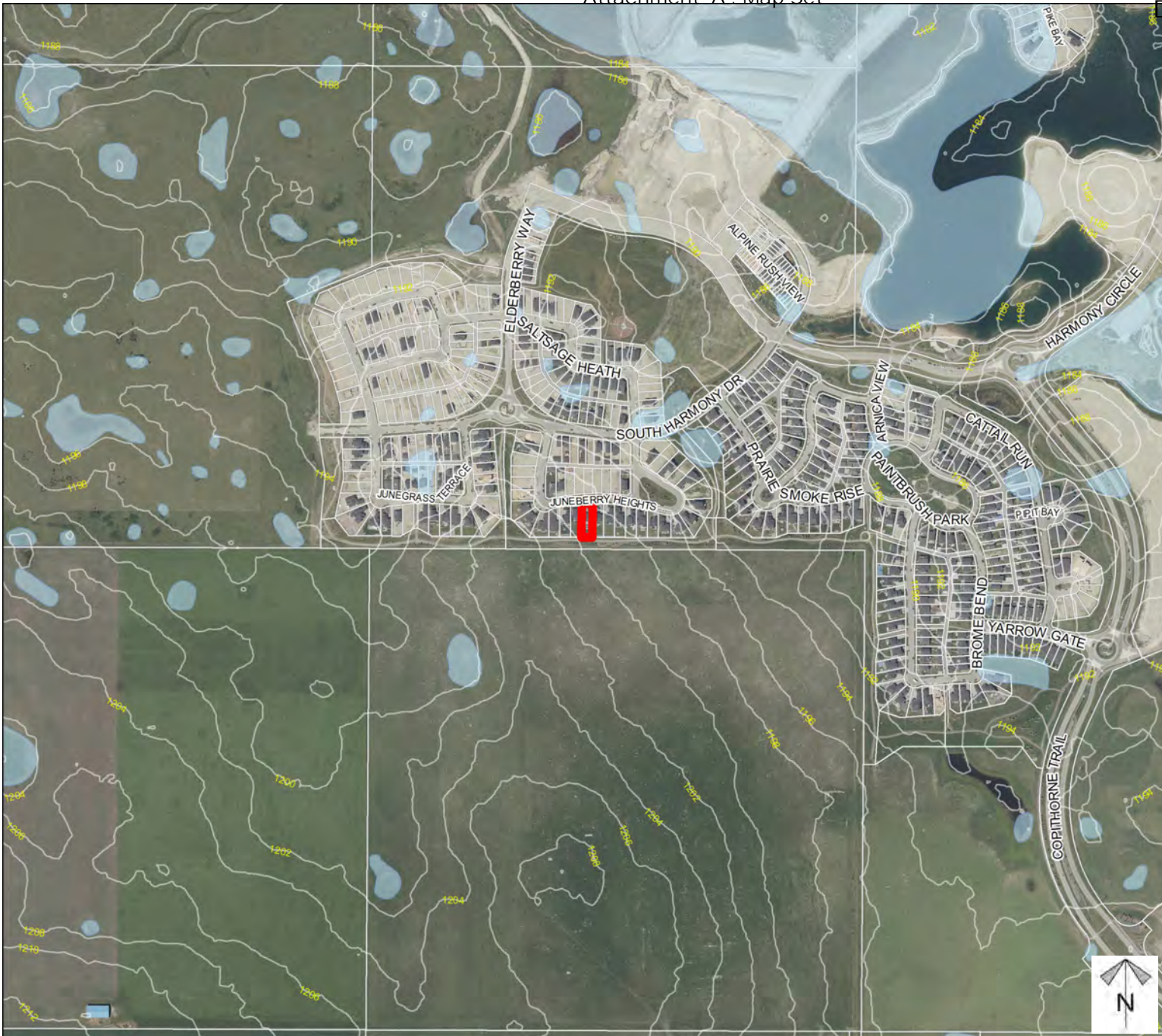


Division: 2
Roll: 05707078
File: PL20230151
Printed: December 18, 2023
Legal: A portion of SE-7-25-3-W5M

Environmental

Redesignation Proposal

To amend Direct Control Bylaw C-6688-2008 (DC-129) to reduce the minimum side yard setback requirement from 1.20 metres (3.94 feet) to 0.62 metres (2.03 feet) on Lot 2, Block 3, Plan 1013437 within SE-07-25-03-W05M.



-  Subject Lands
-  Contour - 2 meters
-  Riparian Setbacks
-  Alberta Wetland Inventory
-  Surface Water

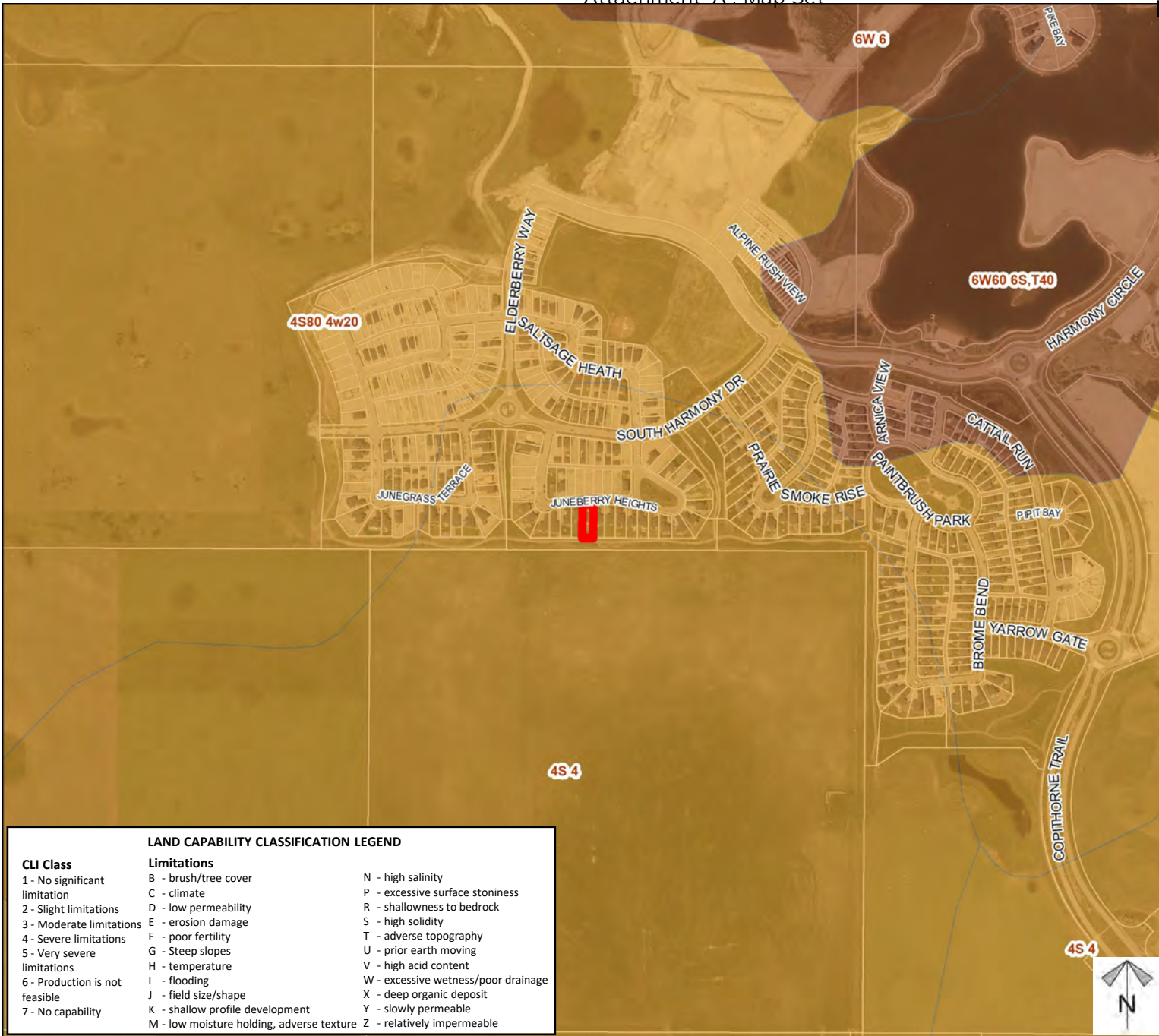


Division: 2
Roll: 05707078
File: PL20230151
Printed: December 18, 2023
Legal: A portion of SE-7-25-3-W5M

Soil Classifications

Redesignation Proposal

To amend Direct Control Bylaw C-6688-2008 (DC-129) to reduce the minimum side yard setback requirement from 1.20 metres (3.94 feet) to 0.62 metres (2.03 feet) on Lot 2, Block 3, Plan 1013437 within SE-07-25-03-W05M.



LAND CAPABILITY CLASSIFICATION LEGEND

CLI Class	Limitations	
1 - No significant limitation	B - brush/tree cover	N - high salinity
2 - Slight limitations	C - climate	P - excessive surface stoniness
3 - Moderate limitations	D - low permeability	R - shallowness to bedrock
4 - Severe limitations	E - erosion damage	S - high solidity
5 - Very severe limitations	F - poor fertility	T - adverse topography
6 - Production is not feasible	G - Steep slopes	U - prior earth moving
7 - No capability	H - temperature	V - high acid content
	I - flooding	W - excessive wetness/poor drainage
	J - field size/shape	X - deep organic deposit
	K - shallow profile development	Y - slowly permeable
	M - low moisture holding, adverse texture	Z - relatively impermeable

Division: 2
 Roll: 05707078
 File: PL20230151
 Printed: December 18, 2023
 Legal: A portion of SE-7-25-3-W5M

Landowner Circulation Area

Redesignation Proposal

To amend Direct Control Bylaw C-6688-2008 (DC-129) to reduce the minimum side yard setback requirement from 1.20 metres (3.94 feet) to 0.62 metres (2.03 feet) on Lot 2, Block 3, Plan 1013437 within SE-07-25-03-W05M.

Legend

Support



Not Support



Division: 2
Roll: 05707078
File: PL20230151
Printed: December 18, 2023
Legal: A portion of SE-7-25-3-W5M

TAYLOR TERRACE

RGE RD-40

911 0286

SOUTH HARMONY DR

MUNROD

931 0272

COPITHORNE TRAIL

ANNICA VIEW

BROME BEND

SMOKER SE

PRAIRIE

SALE IN HEALTH

D AILEN DR

HARMONY CIRCLE

GRAVING LANE

EAST HARMONY TRAIL

Note: First two digits of the Plan Number indicate the year of subdivision registration.

Plan numbers that include letters were registered before 1973 and do not reference a year.

