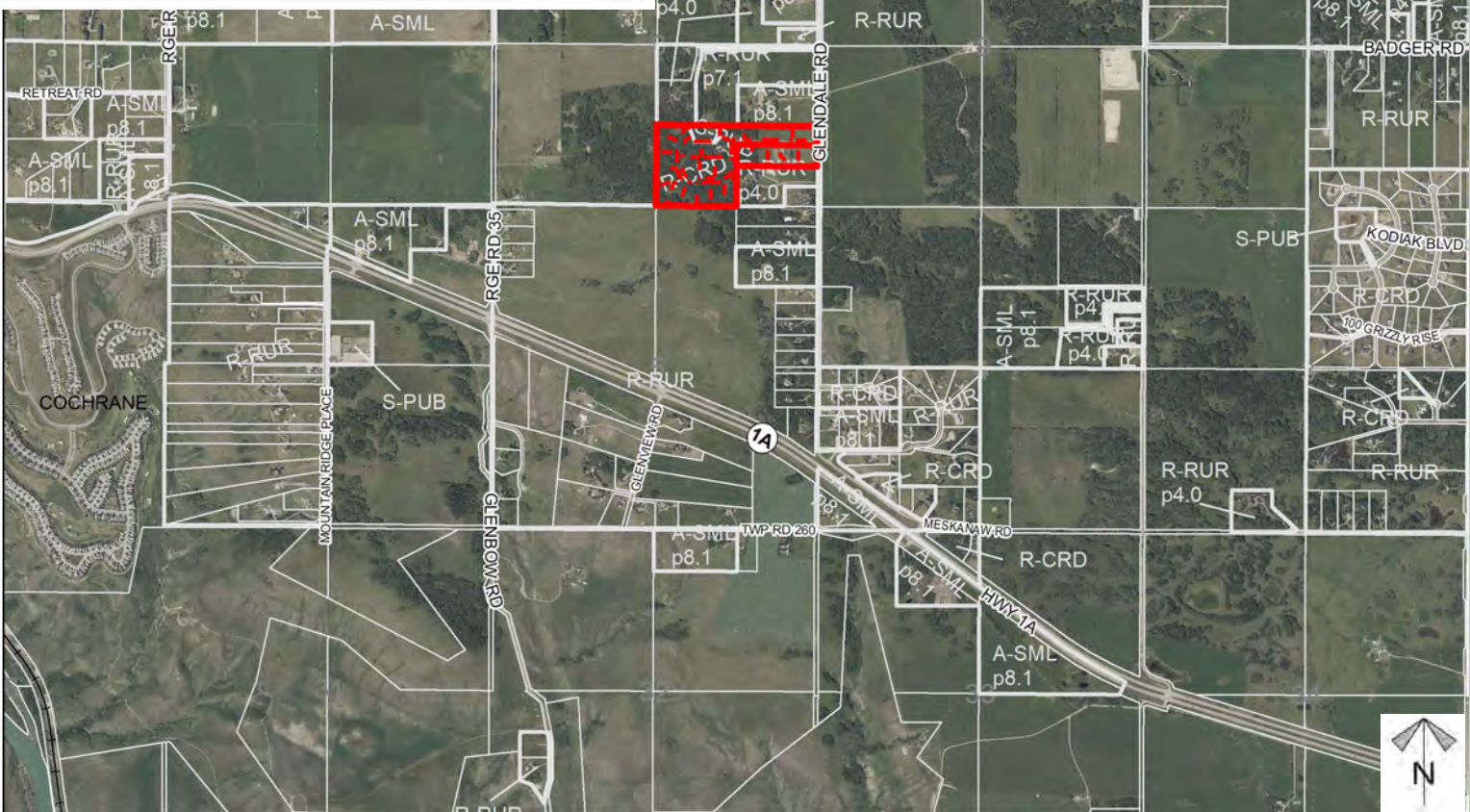
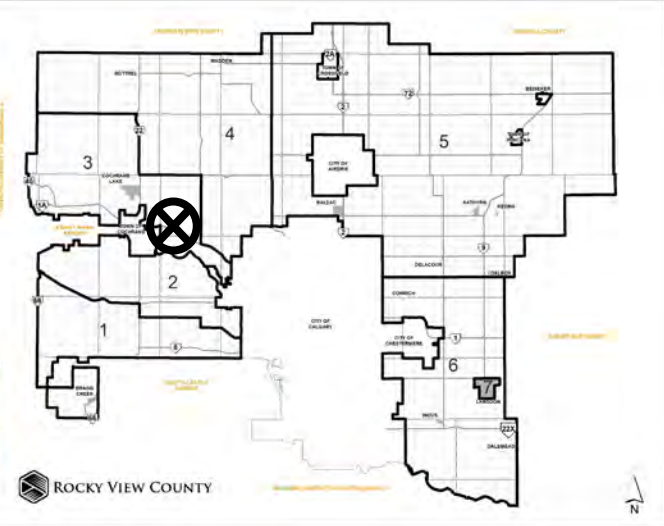


# Location & Context

## Subdivision Proposal

To create 15 residential parcels ranging from ± 0.82 hectares (± 2.00 acres) to ± 1.30 hectares (± 3.20 acres), one ± 0.95 hectare (± 2.35 acre), Public Utility Lot (PUL), and ± 2.80 hectares (± 6.90 acres) of internal subdivision road.

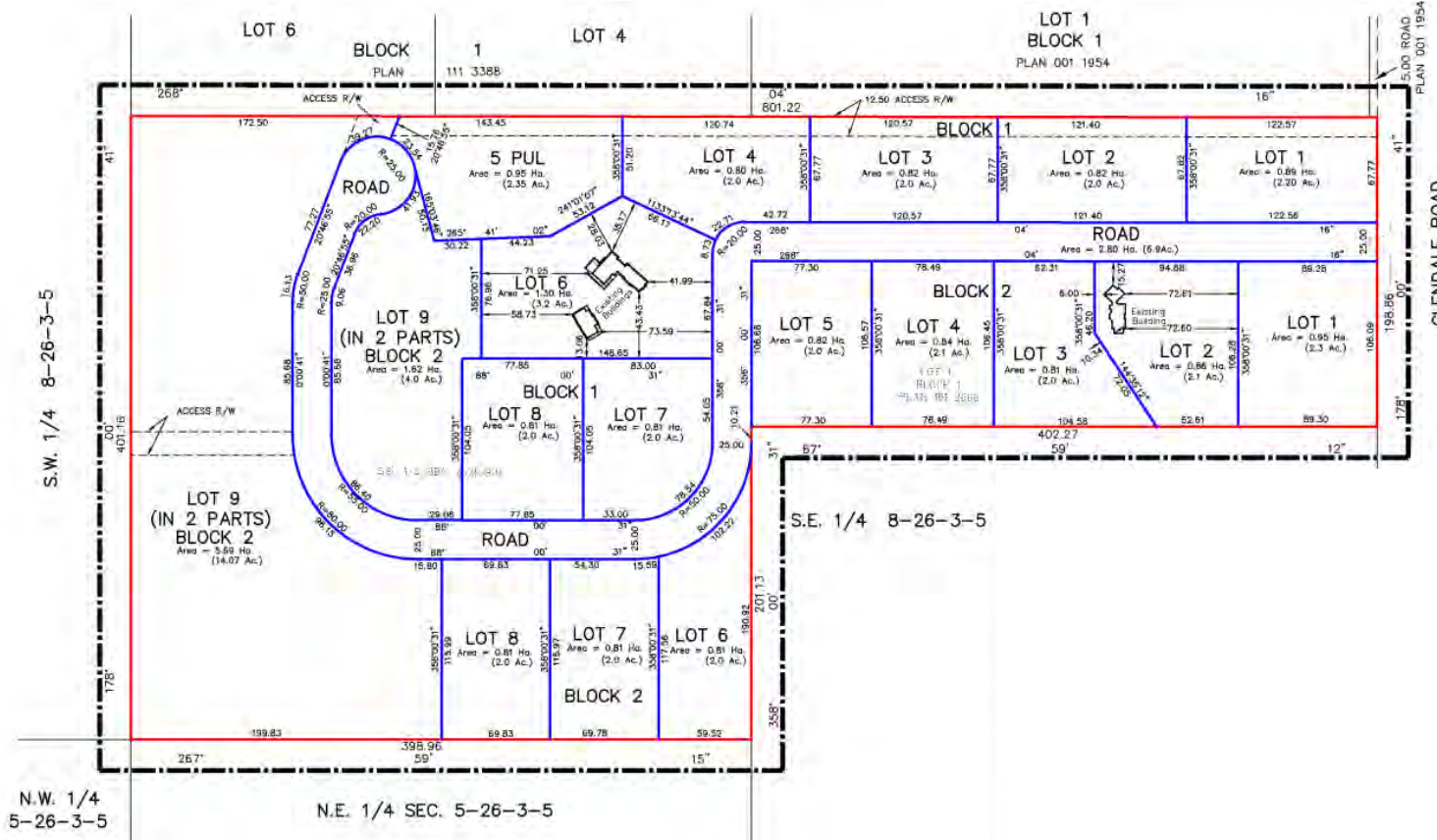


Division: 3  
Roll: 06708008, 06708015  
File: PL20230020  
Printed: March 9, 2023  
Legal: A portion of SE-08-26-03-W05M

# Development Proposal

## Subdivision Proposal

To create 15 residential parcels ranging from ± 0.82 hectares (± 2.00 acres) to ± 1.30 hectares (± 3.20 acres), one ± 0.95 hectare (± 2.35 acre), Public Utility Lot (PUL), and ± 2.80 hectares (± 6.90 acres) of internal subdivision road.



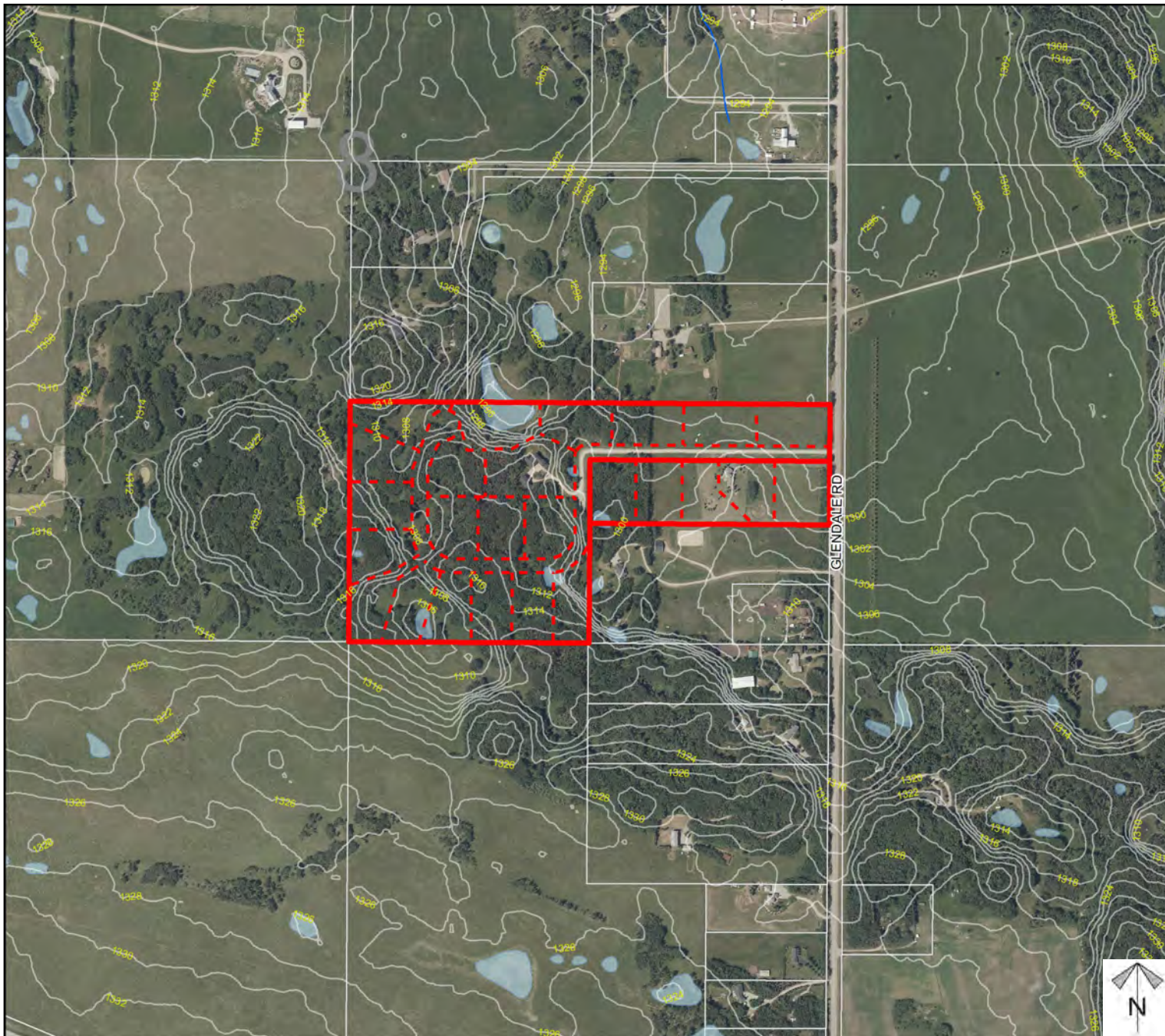
Division: 3  
Roll: 06708008, 06708015  
File: PL20230020  
Printed: March 9, 2023  
Legal: A portion of SE-08-26-03-W05M



## Environmental

### Subdivision Proposal

To create 15 residential parcels ranging from  $\pm$  0.82 hectares ( $\pm$  2.00 acres) to  $\pm$  1.30 hectares ( $\pm$  3.20 acres), one  $\pm$  0.95 hectare ( $\pm$  2.35 acre), Public Utility Lot (PUL), and  $\pm$  2.80 hectares ( $\pm$  6.90 acres) of internal subdivision road.



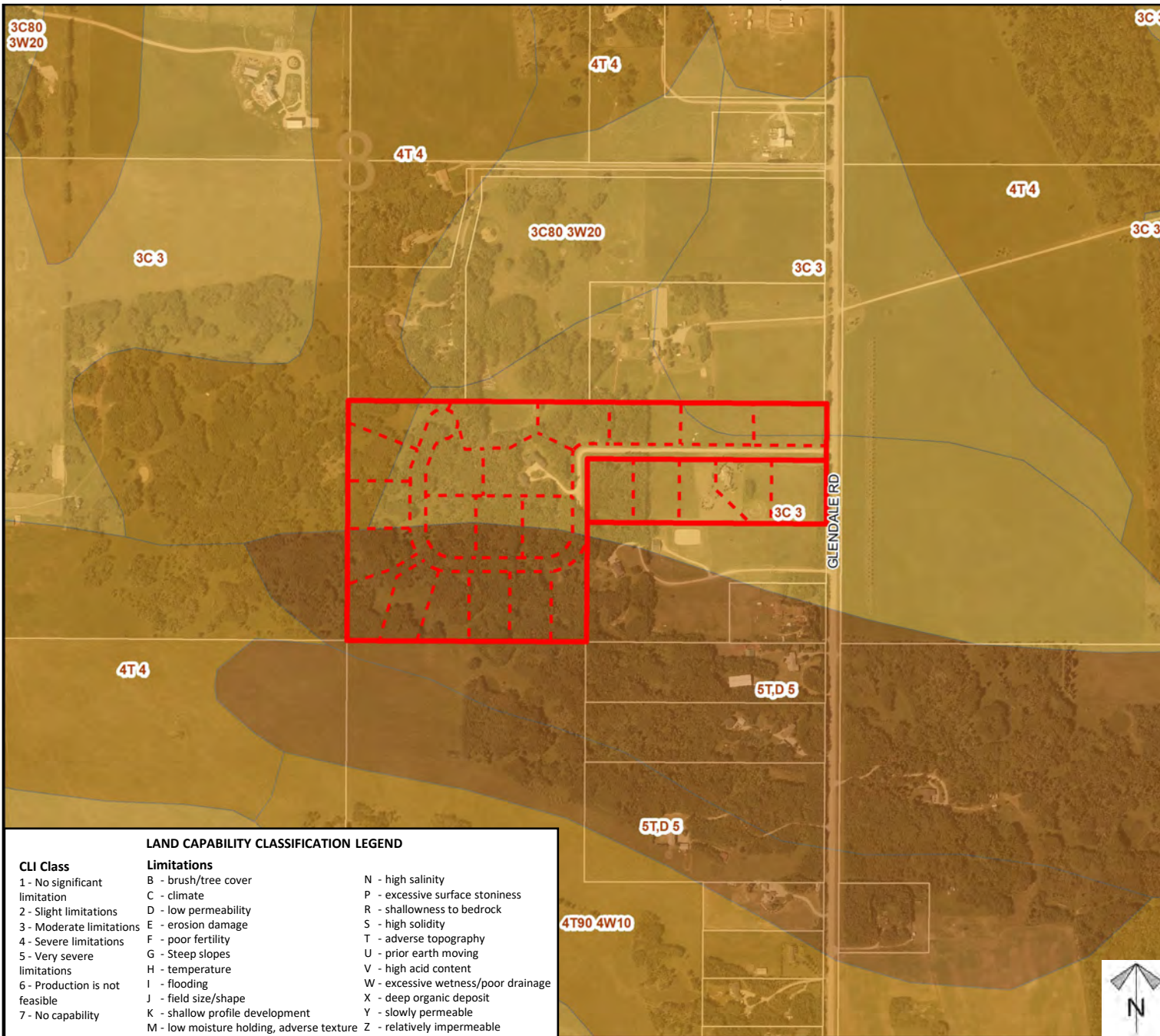
-  Subject Lands
-  Contour - 2 meters
-  Riparian Setbacks
-  Alberta Wetland Inventory
-  Surface Water

Division: 3  
 Roll: 06708008, 06708015  
 File: PL20230020  
 Printed: March 9, 2023  
 Legal: A portion of SE-08-26-03-W05M

# Soil Classifications

## Subdivision Proposal

To create 15 residential parcels from ± 0.82 hectares (± 2.00 acres) to ± 1.30 hectares (± 3.20 acres), one ± 0.95 hectare (± 2.35 acre), Public Utility Lot (PUL), and ± 2.80 hectares (± 6.90 acres) of internal subdivision road.



### LAND CAPABILITY CLASSIFICATION LEGEND

CLI Class	Limitations	
1 - No significant limitation	B - brush/tree cover	N - high salinity
2 - Slight limitations	C - climate	P - excessive surface stoniness
3 - Moderate limitations	D - low permeability	R - shallowness to bedrock
4 - Severe limitations	E - erosion damage	S - high solidity
5 - Very severe limitations	F - poor fertility	T - adverse topography
6 - Production is not feasible	G - Steep slopes	U - prior earth moving
7 - No capability	H - temperature	V - high acid content
	I - flooding	W - excessive wetness/poor drainage
	J - field size/shape	X - deep organic deposit
	K - shallow profile development	Y - slowly permeable
	M - low moisture holding, adverse texture	Z - relatively impermeable

Division: 3  
 Roll: 06708008, 06708015  
 File: PL20230020  
 Printed: March 9, 2023  
 Legal: A portion of SE-08-26-03-W05M

# Landowner Circulation Area

## Subdivision Proposal

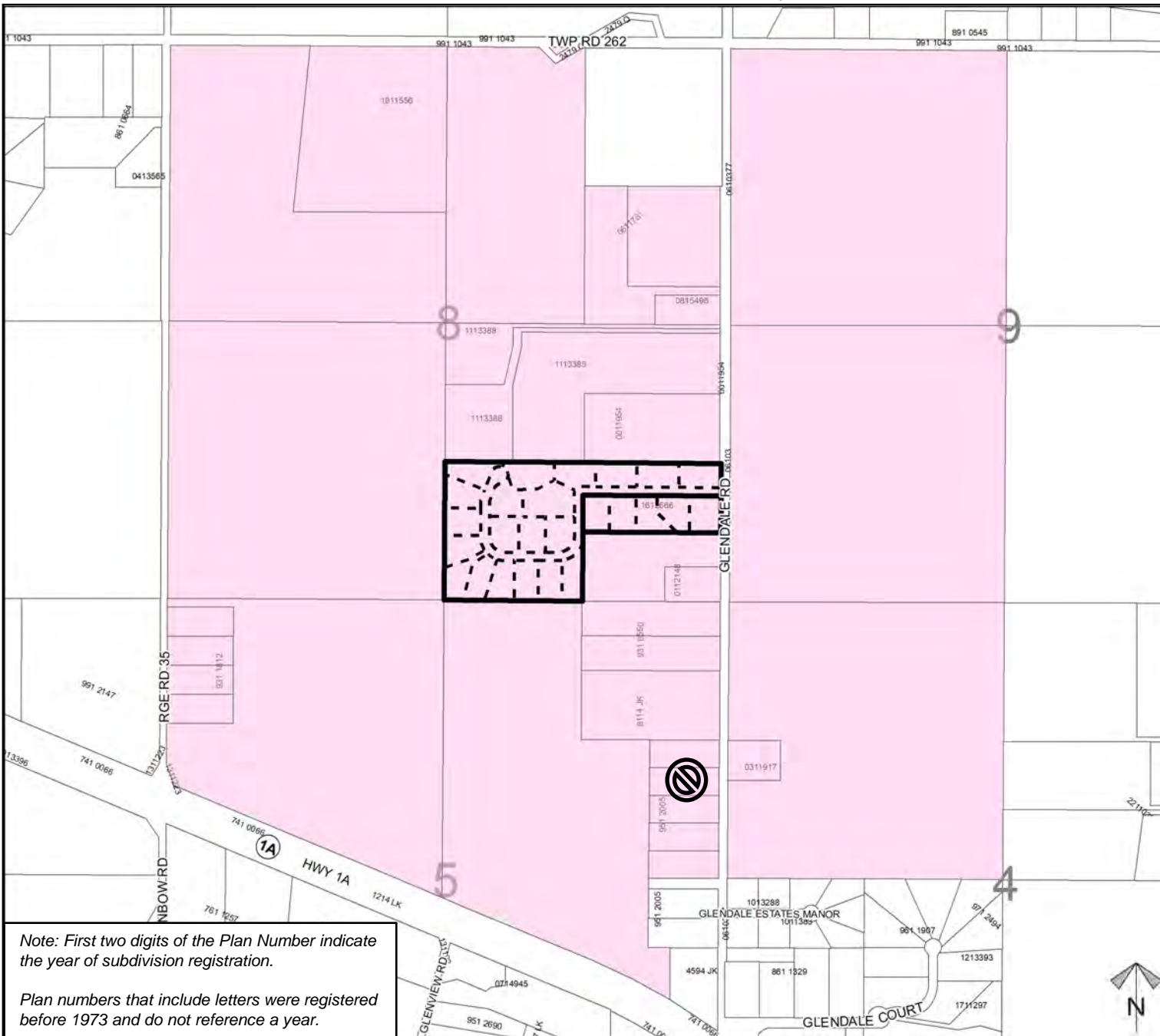
To create 15 residential parcels ranging from ± 0.82 hectares (± 2.00 acres) to ± 1.30 hectares (± 3.20 acres), one ± 0.95 hectare (± 2.35 acre), Public Utility Lot (PUL), and ± 2.80 hectares (± 6.90 acres) of internal subdivision road.

### Legend

Support



Not Support



Note: First two digits of the Plan Number indicate the year of subdivision registration.

Plan numbers that include letters were registered before 1973 and do not reference a year.

Division: 3  
Roll: 06708008, 06708015  
File: PL20230020  
Printed: March 9, 2023  
Legal: A portion of SE-08-26-03-W05M

