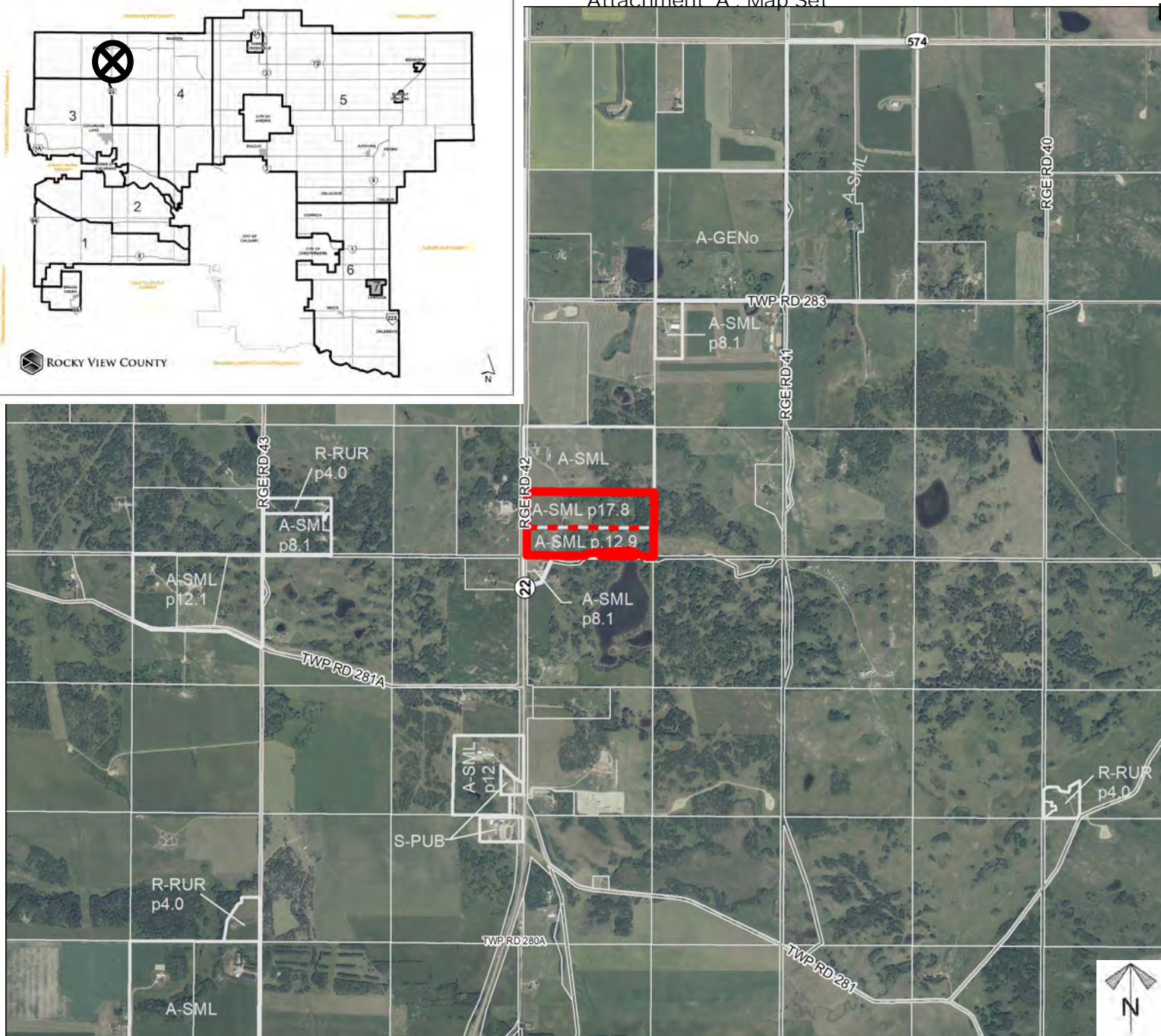
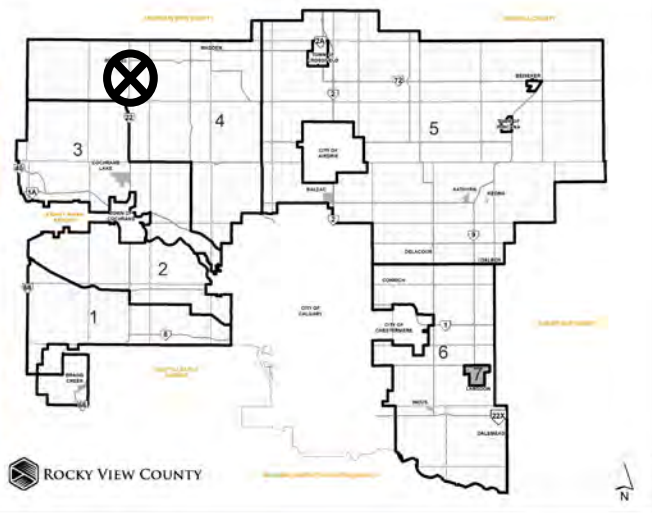


## Location & Context

### Subdivision Proposal

To create a  $\pm 17.8$  hectare (44.0 acre) parcel with a  $\pm 12.8$  hectare (31.6 acre) remainder.



Division: 4  
Roll: 08814007  
File: PL20230142  
Printed: Nov 24, 2023  
Legal: A portion of SW-14-28-4-W5M



**Development  
Proposal****Subdivision Proposal**

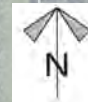
To create a  $\pm 17.8$  hectare (44.0 acre) parcel with a  $\pm 12.8$  hectare (31.6 acre) remainder.

22 RGE RD 42

**Lot 2 (Proposed)**  
 $\pm 17.8$  hectare (44.0 acre)

**Lot 1 (Remainder)**  
 $\pm 12.8$  hectare (31.6 acre)

Division: 4  
Roll: 08814007  
File: PL20230142  
Printed: Nov 24, 2023  
Legal: A portion of SW-14-  
28-4-W5M

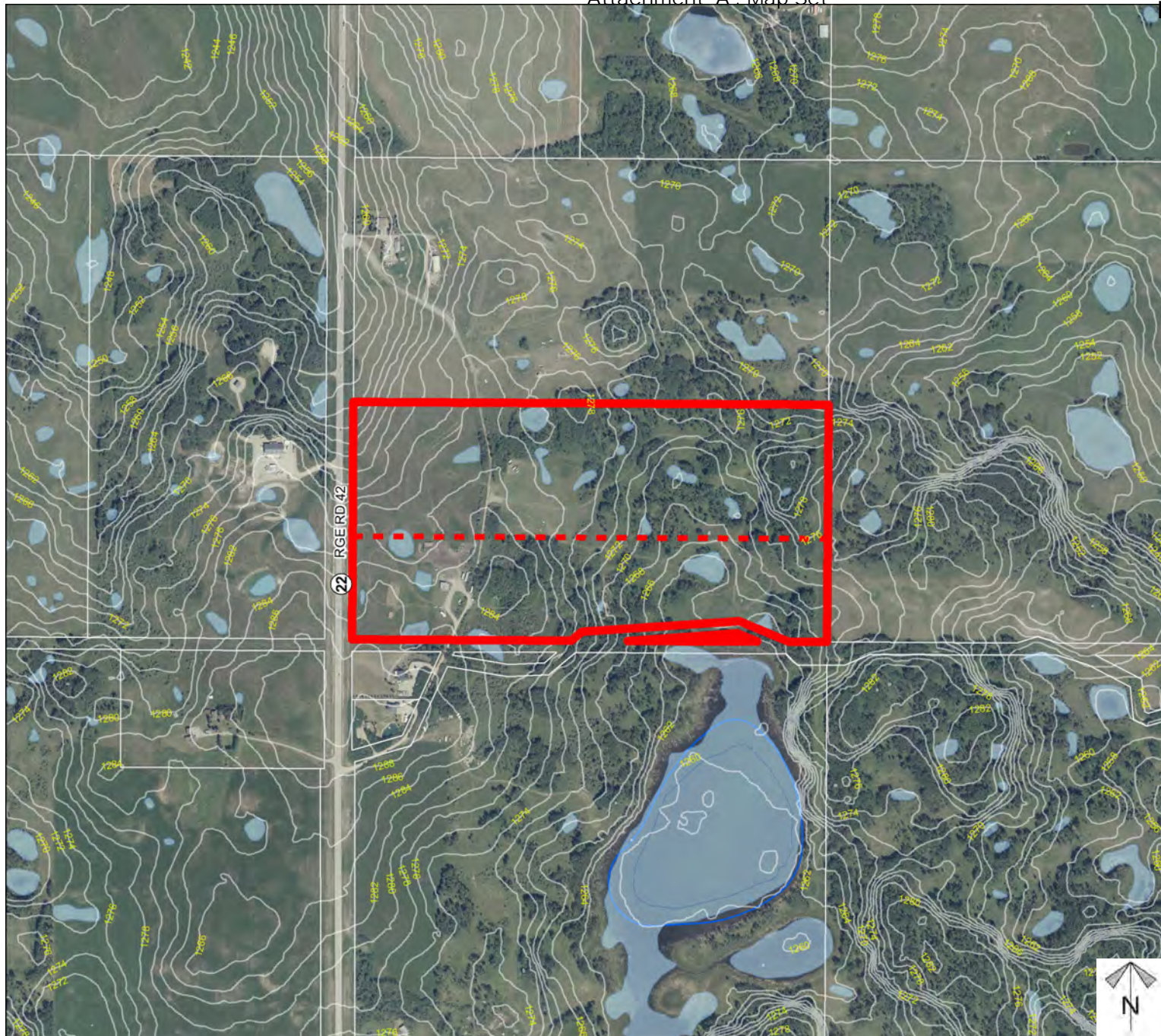




## Environmental

### Subdivision Proposal

To create a  $\pm 17.8$  hectare (44.0 acre) parcel with a  $\pm 12.8$  hectare (31.6 acre) remainder.



- Subject Lands
- Contour - 2 meters
- Riparian Setbacks
- Alberta Wetland Inventory
- Surface Water

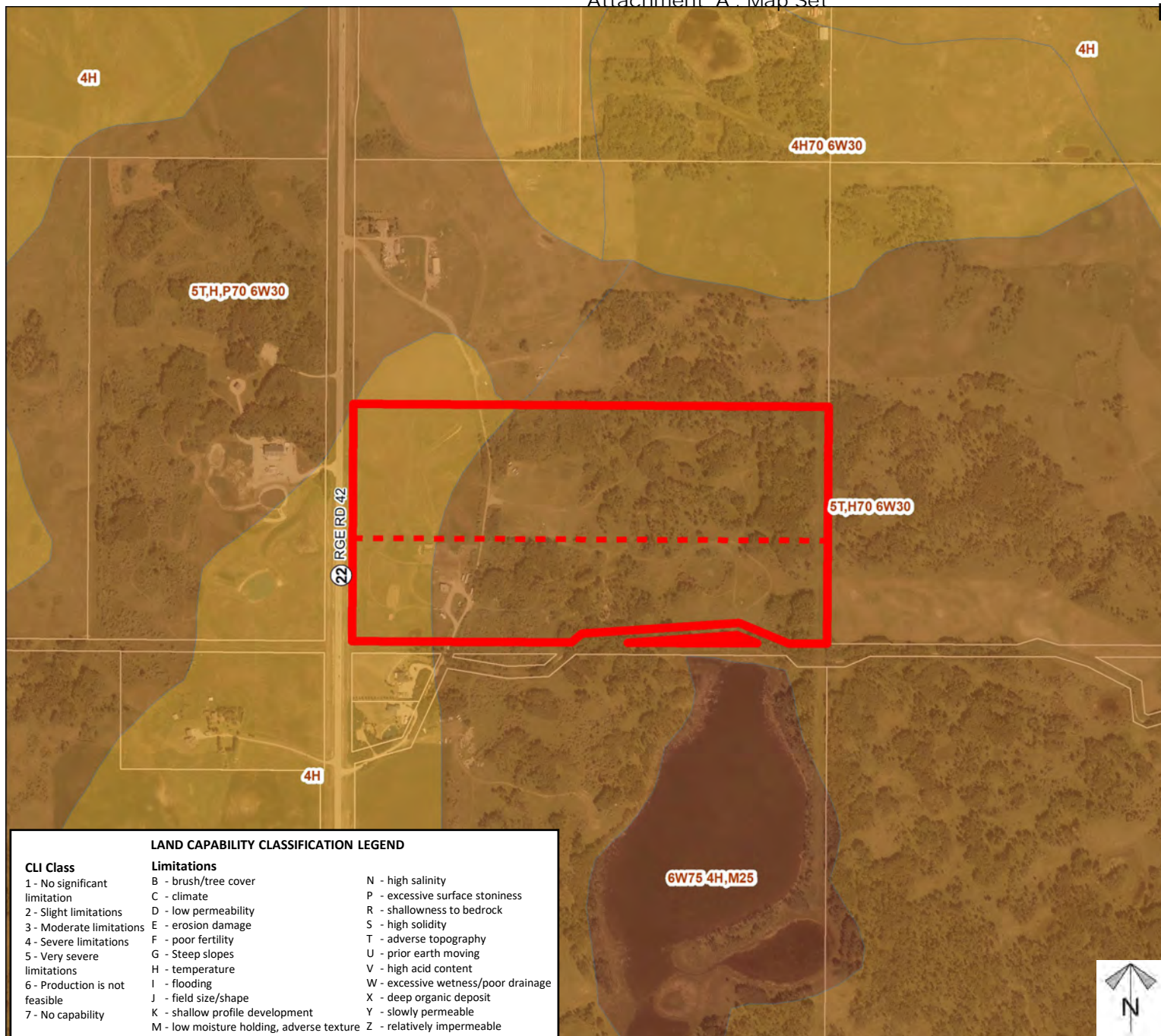
Division: 4  
Roll: 08814007  
File: PL20230142  
Printed: Nov 24, 2023  
Legal: A portion of SW-14-  
28-4-W5M



## Soil Classifications

### Subdivision Proposal

To create a  $\pm$  17.8 hectare (44.0 acre) parcel with a  $\pm$  12.8 hectare (31.6 acre) remainder.



#### LAND CAPABILITY CLASSIFICATION LEGEND

##### CLI Class

- 1 - No significant limitation
- 2 - Slight limitations
- 3 - Moderate limitations
- 4 - Severe limitations
- 5 - Very severe limitations
- 6 - Production not feasible
- 7 - No capability

##### Limitations

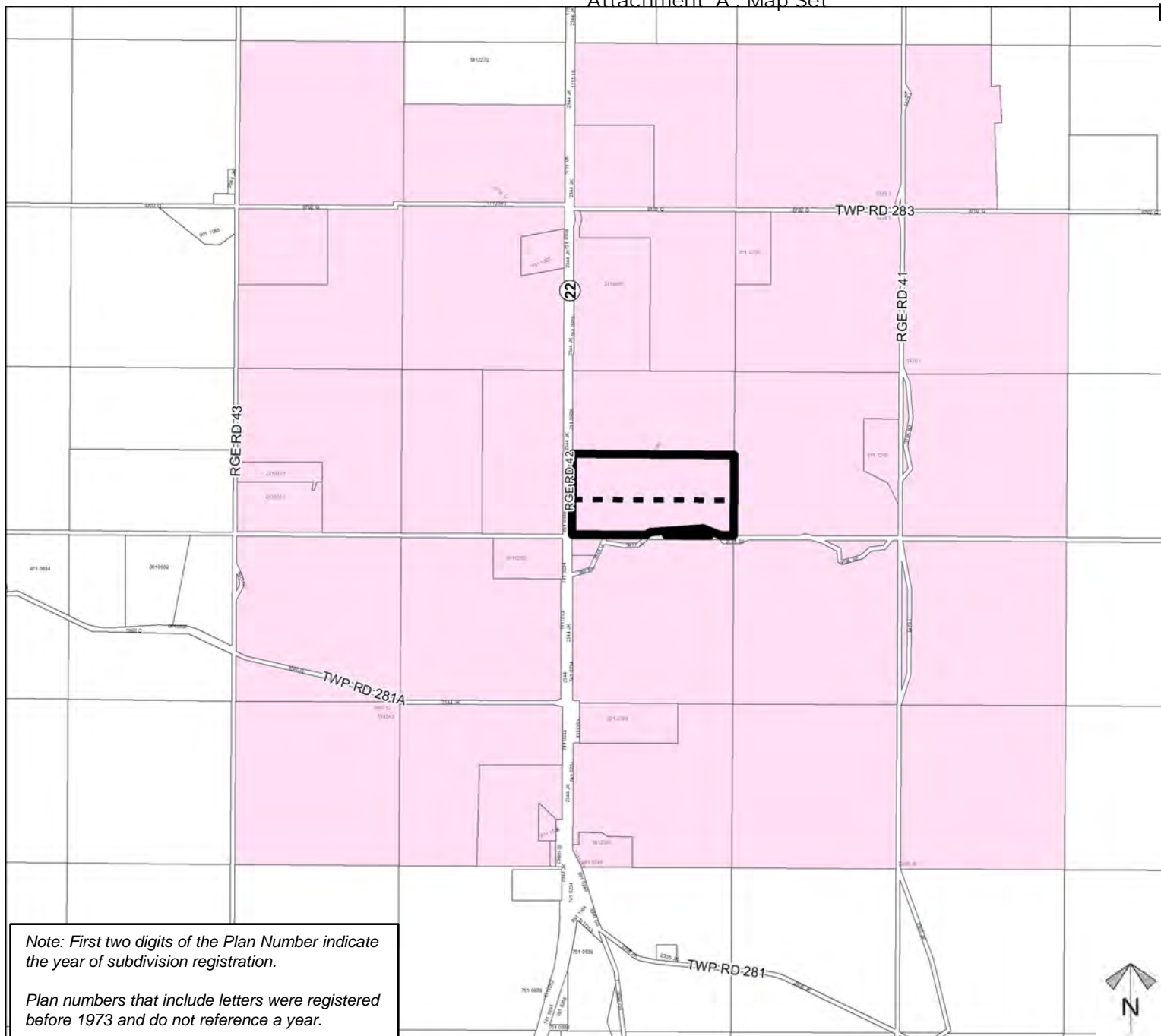
- B - brush/tree cover
- C - climate
- D - low permeability
- E - erosion damage
- F - poor fertility
- G - Steep slopes
- H - temperature
- I - flooding
- J - field size/shape
- K - shallow profile development
- M - low moisture holding, adverse texture
- N - high salinity
- P - excessive surface stoniness
- R - shallowness to bedrock
- S - high solidity
- T - adverse topography
- U - prior earth moving
- V - high acid content
- W - excessive wetness/poor drainage
- X - deep organic deposit
- Y - slowly permeable
- Z - relatively impermeable

Division: 4  
Roll: 08814007  
File: PL20230142  
Printed: Nov 24, 2023  
Legal: A portion of SW-14-28-4-W5M

## Landowner Circulation Area

### Subdivision Proposal

To create a  $\pm 17.8$  hectare (44.0 acre) parcel with a  $\pm 12.8$  hectare (31.6 acre) remainder.



Note: First two digits of the Plan Number indicate the year of subdivision registration.

Plan numbers that include letters were registered before 1973 and do not reference a year.

### Legend

Support



Not Support



Division: 4  
 Roll: 08814007  
 File: PL20230142  
 Printed: Nov 24, 2023  
 Legal: A portion of SW-14-28-4-W5M

