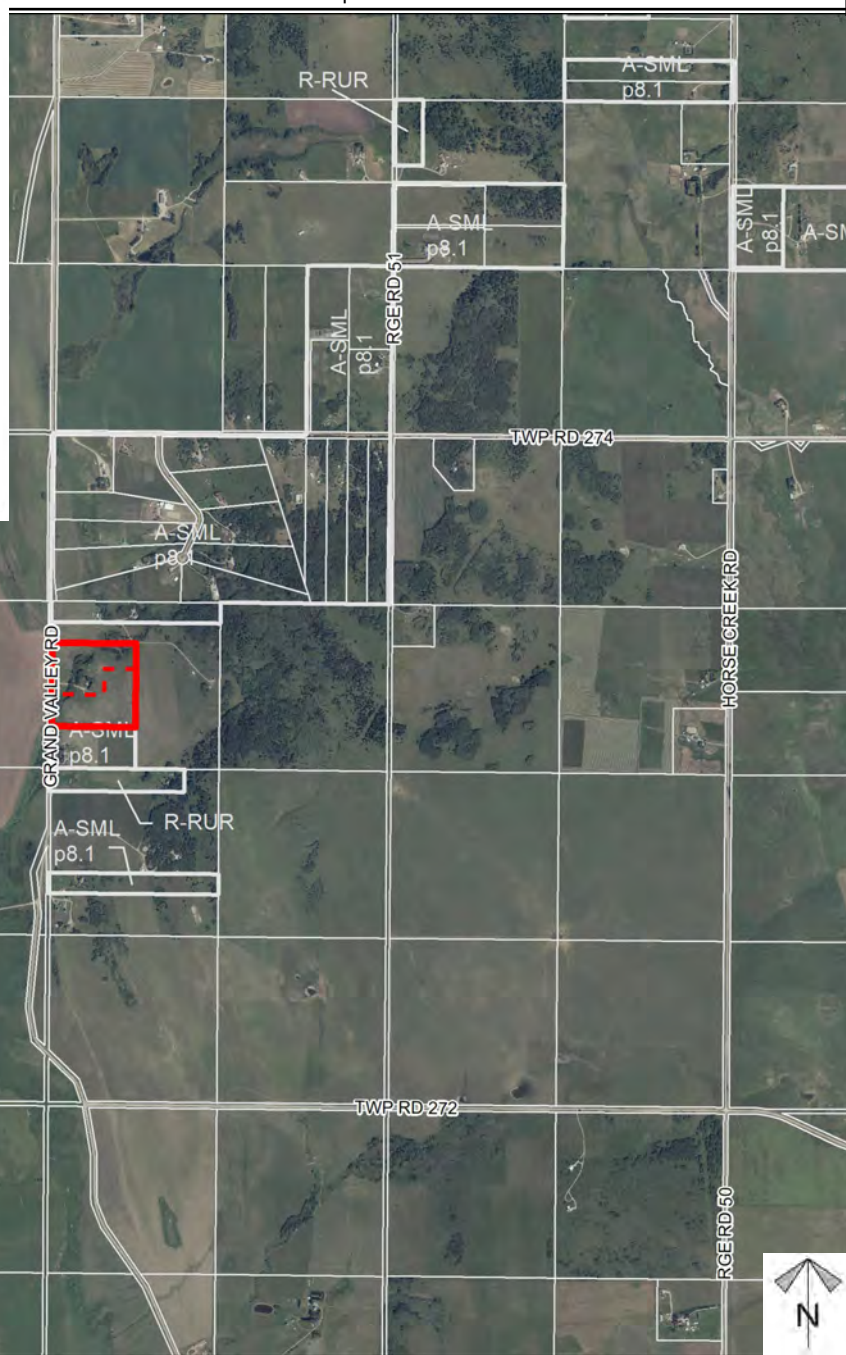
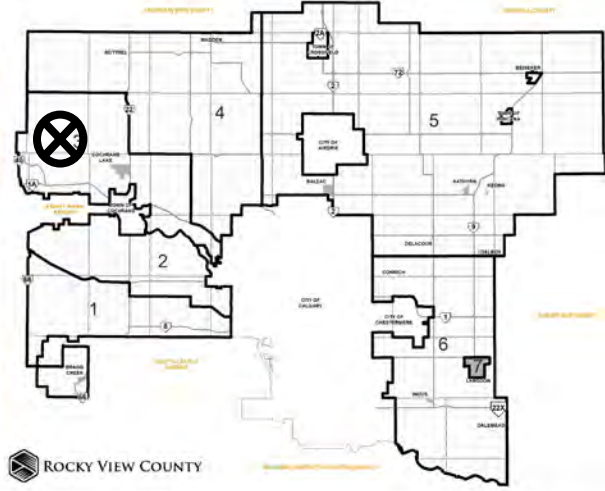


Location & Context

Subdivision Proposal

To create a ± 8.09 hectare (20.0 acre) parcel with a ± 8.09 hectare (20.0 acre) remainder.

Division: 3
Roll: 07923023
File: PL20230065
Printed: May 15, 2023
Legal: A portion of SW-23-27-05-W5M



Development Proposal

Subdivision Proposal

To create a \pm 8.09
hectare (20.0 acre) parcel
with a \pm 8.09 hectare (20.0
acre) remainder.

GRAND VALLEY RD

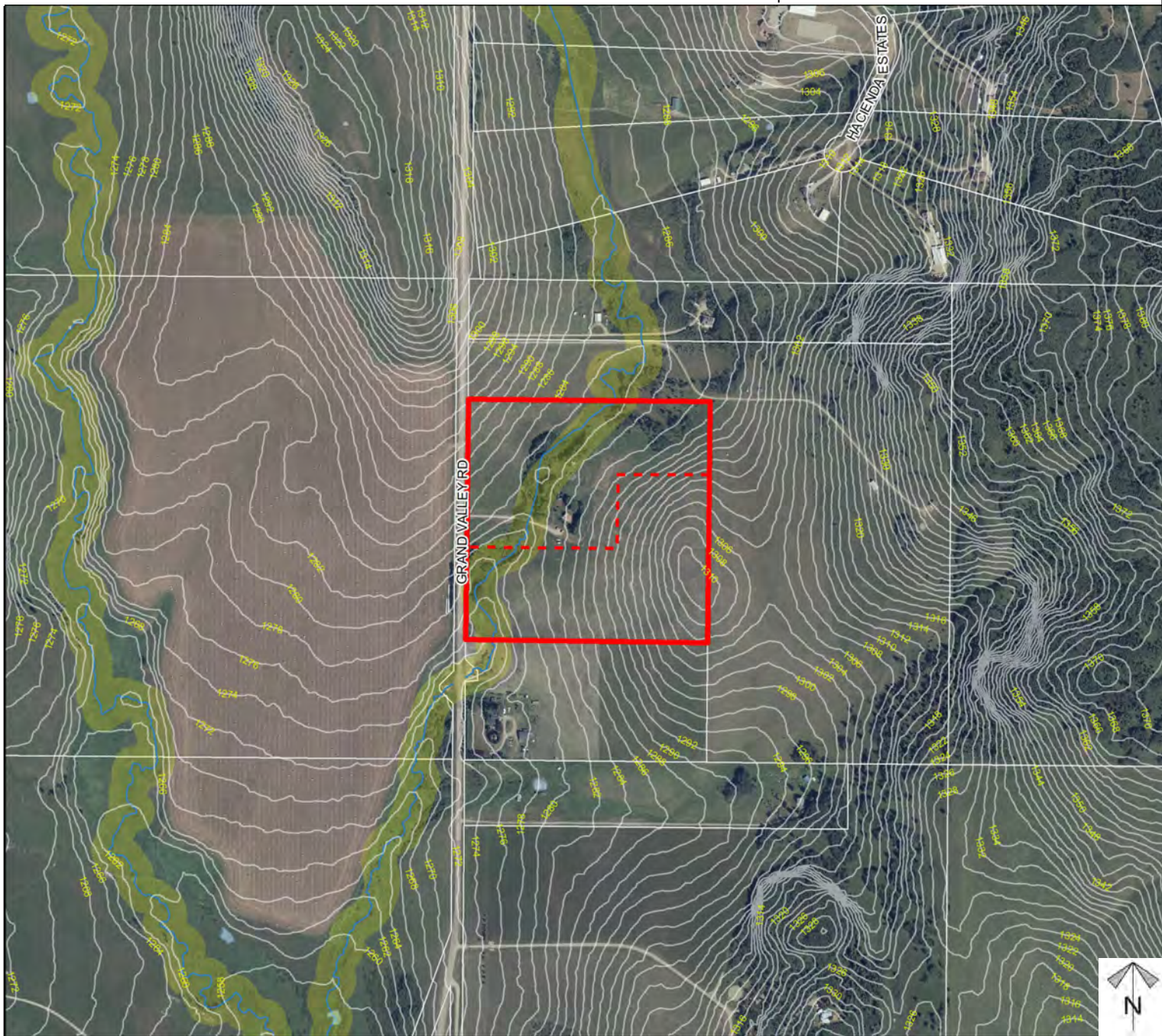


Division: 3
Roll: 07923023
File: PL20230065
Printed: May 15, 2023
Legal: A portion of SW-23-
27-05-W5M

Environmental

Subdivision Proposal

To create a ± 8.09 hectare (20.0 acre) parcel with a ± 8.09 hectare (20.0 acre) remainder.



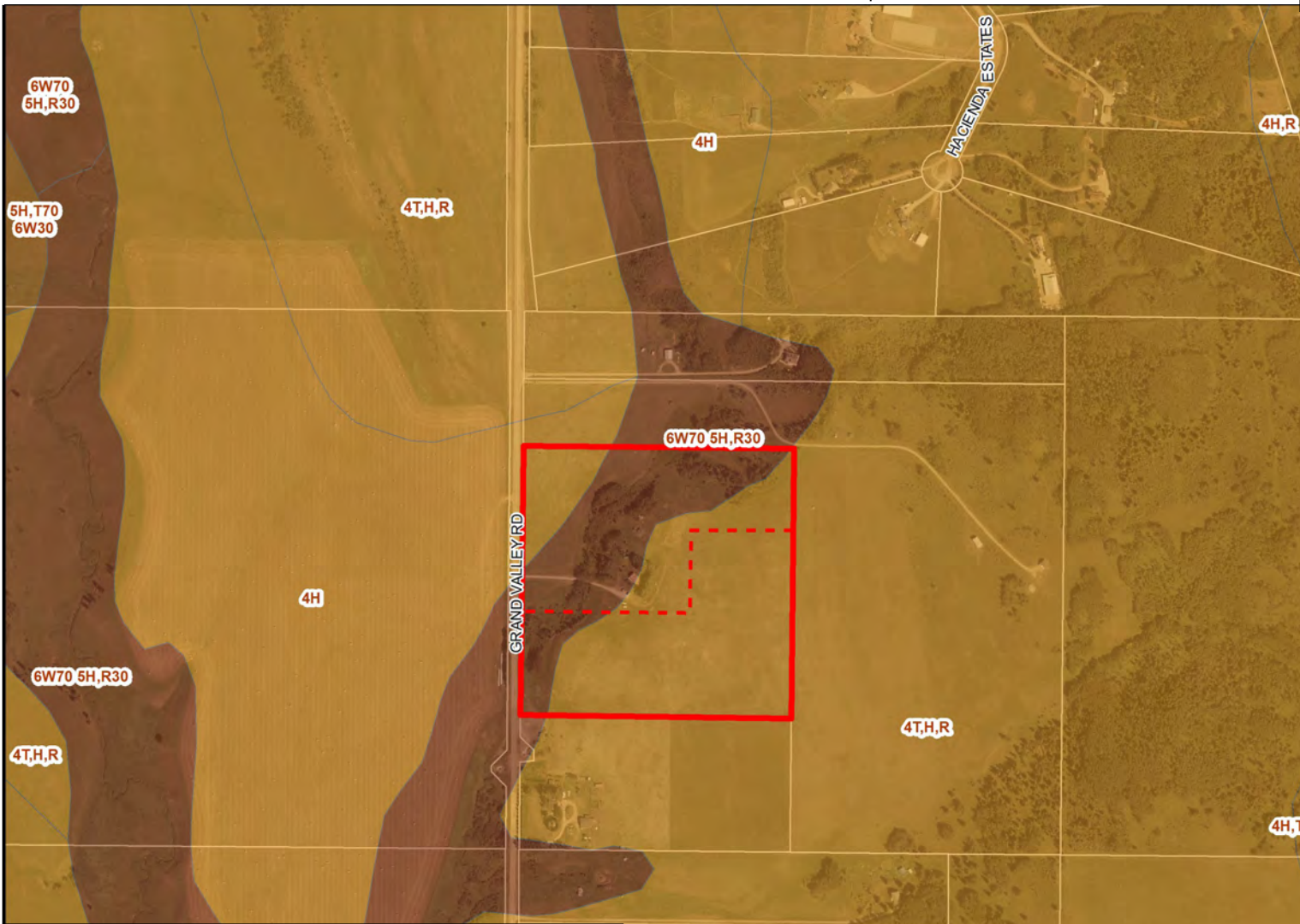
-  Subject Lands
-  Contour - 2 meters
-  Riparian Setbacks
-  Alberta Wetland Inventory
-  Surface Water

Division: 3
 Roll: 07923023
 File: PL20230065
 Printed: May 15, 2023
 Legal: A portion of SW-23-27-05-W5M

Soil Classifications

Subdivision Proposal

To create a ± 8.09 hectare (20.0 acre) parcel with a ± 8.09 hectare (20.0 acre) remainder.



LAND CAPABILITY CLASSIFICATION LEGEND

CLI Class	Limitations	
1 - No significant limitation	B - brush/tree cover	N - high salinity
2 - Slight limitations	C - climate	P - excessive surface stoniness
3 - Moderate limitations	D - low permeability	R - shallowness to bedrock
4 - Severe limitations	E - erosion damage	S - high solidity
5 - Very severe limitations	F - poor fertility	T - adverse topography
6 - Production is not feasible	G - Steep slopes	U - prior earth moving
7 - No capability	H - temperature	V - high acid content
	I - flooding	W - excessive wetness/poor drainage
	J - field size/shape	X - deep organic deposit
	K - shallow profile development	Y - slowly permeable
	M - low moisture holding, adverse texture	Z - relatively impermeable

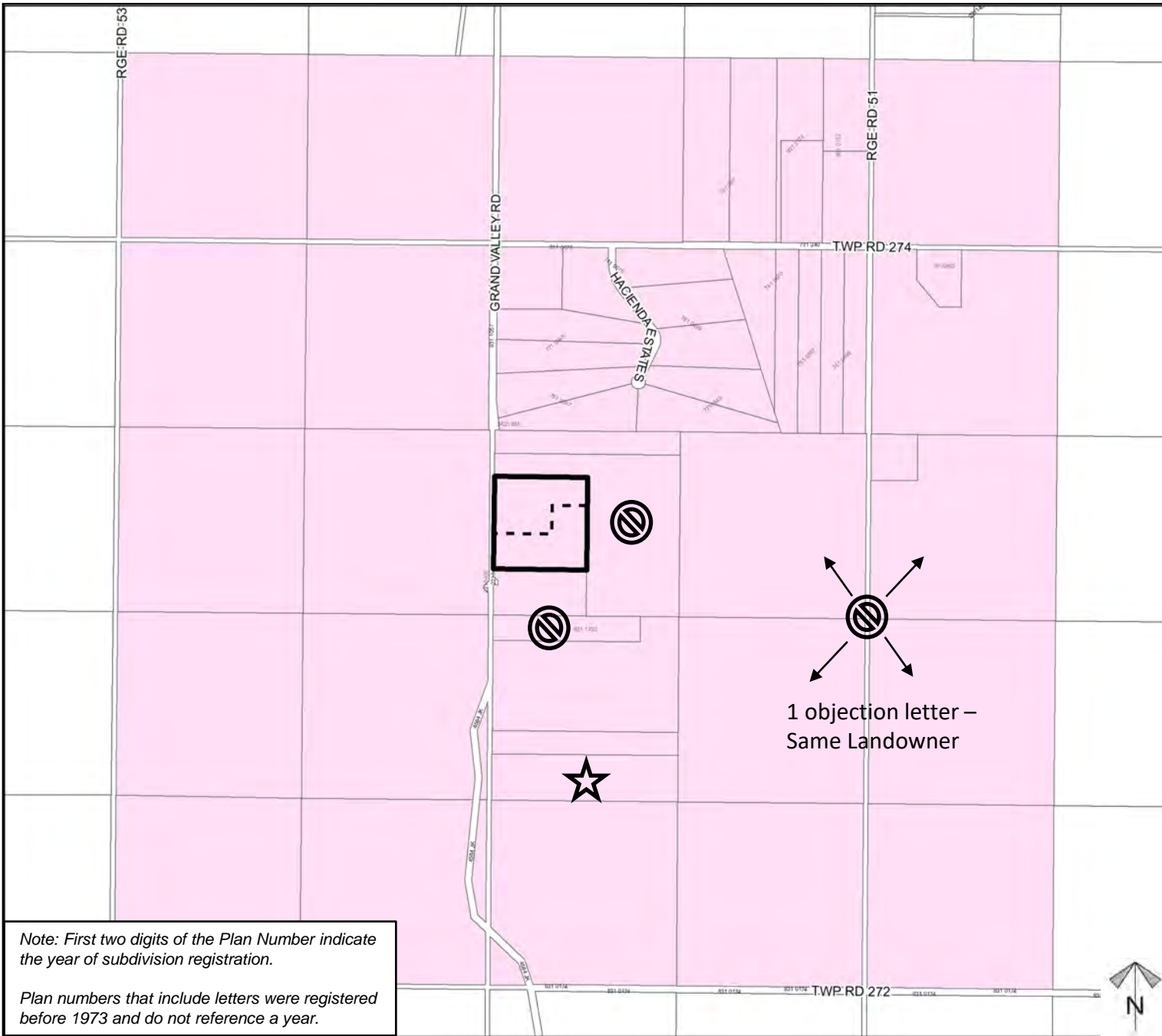


Division: 3
Roll: 07923023
File: PL20230065
Printed: May 15, 2023
Legal: A portion of SW-23-27-05-W5M

Landowner Circulation Area

Subdivision Proposal



To create a ± 8.09
hectare (20.0 acre) parcel
with a ± 8.09 hectare (20.0
acre) remainder.



Note: First two digits of the Plan Number indicate the year of subdivision registration.

Plan numbers that include letters were registered before 1973 and do not reference a year.

Legend

- Support 
- Not Support 

Division: 3
 Roll: 07923023
 File: PL20230065
 Printed: May 15, 2023
 Legal: A portion of SW-23-27-05-W5M