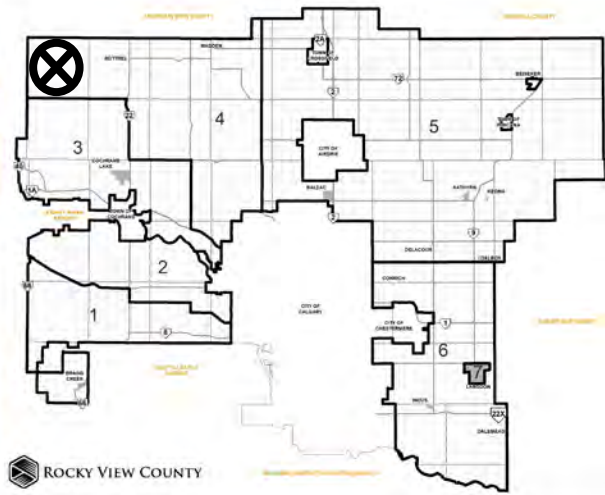


Location & Context

Subdivision Proposal

To create one ±8.21 hectare (±20.29 acre) parcel with a ±8.21 hectare (±20.29 acre) remainder.



Division: 4
 Roll: 08916010
 File: PL20220098
 Printed: Jan 9, 2024
 Legal: A portion of NE-16-28-5-W5M

Development Proposal

Subdivision Proposal

To create one ± 8.21 hectare (± 20.29 acre) parcel with a ± 8.21 hectare (± 20.29 acre) remainder.

Lot 2
 ± 8.21 ha
(± 20.29 ac)

Lot 1
 ± 8.21 ha
(± 20.29 ac)

RGE RD 53

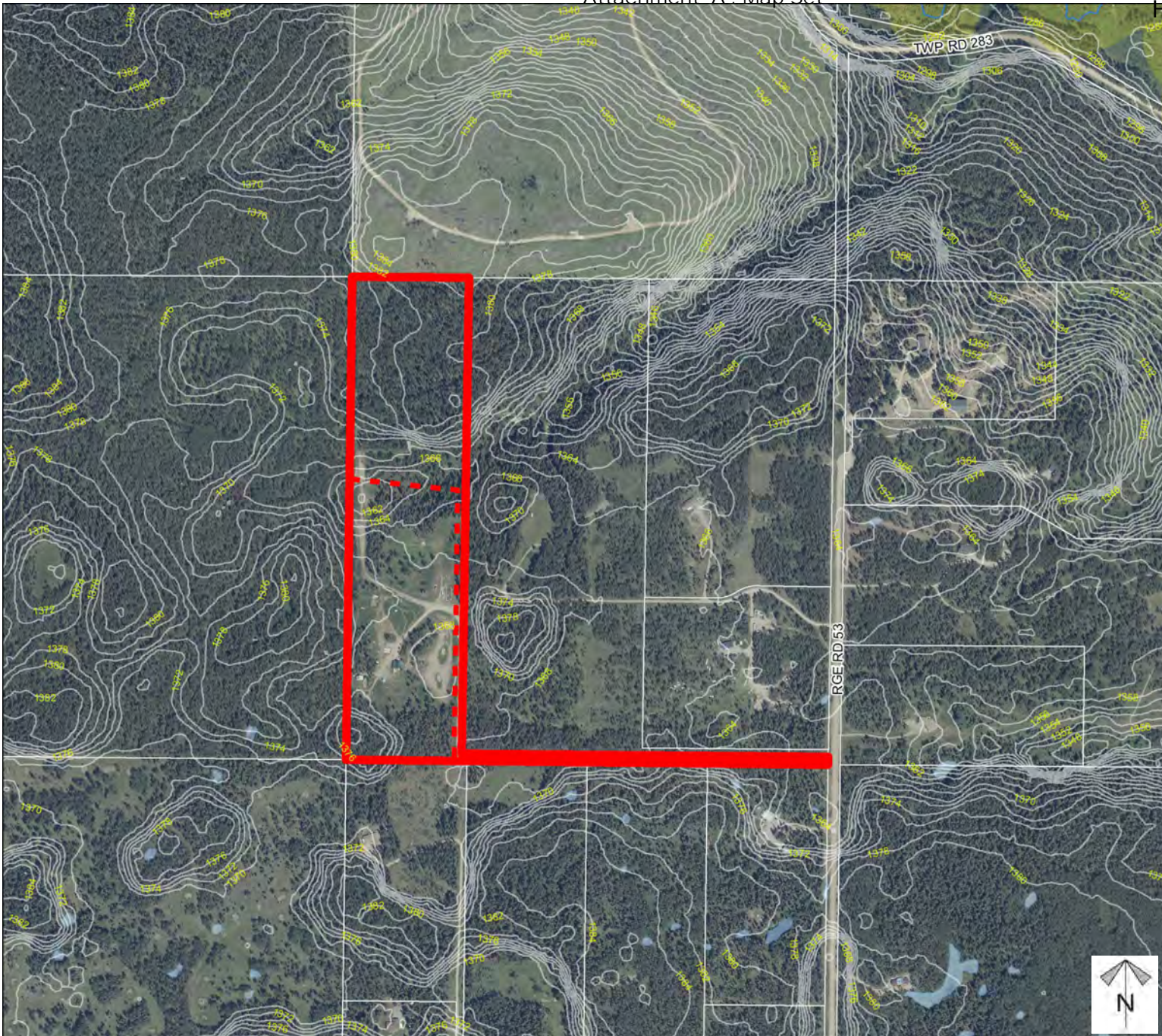


Division: 4
Roll: 08916010
File: PL20220098
Printed: Jan 9, 2024
Legal: A portion of NE-16-28-5-W5M

Environmental

Subdivision Proposal

To create one ± 8.21 hectare (± 20.29 acre) parcel with a ± 8.21 hectare (± 20.29 acre) remainder.



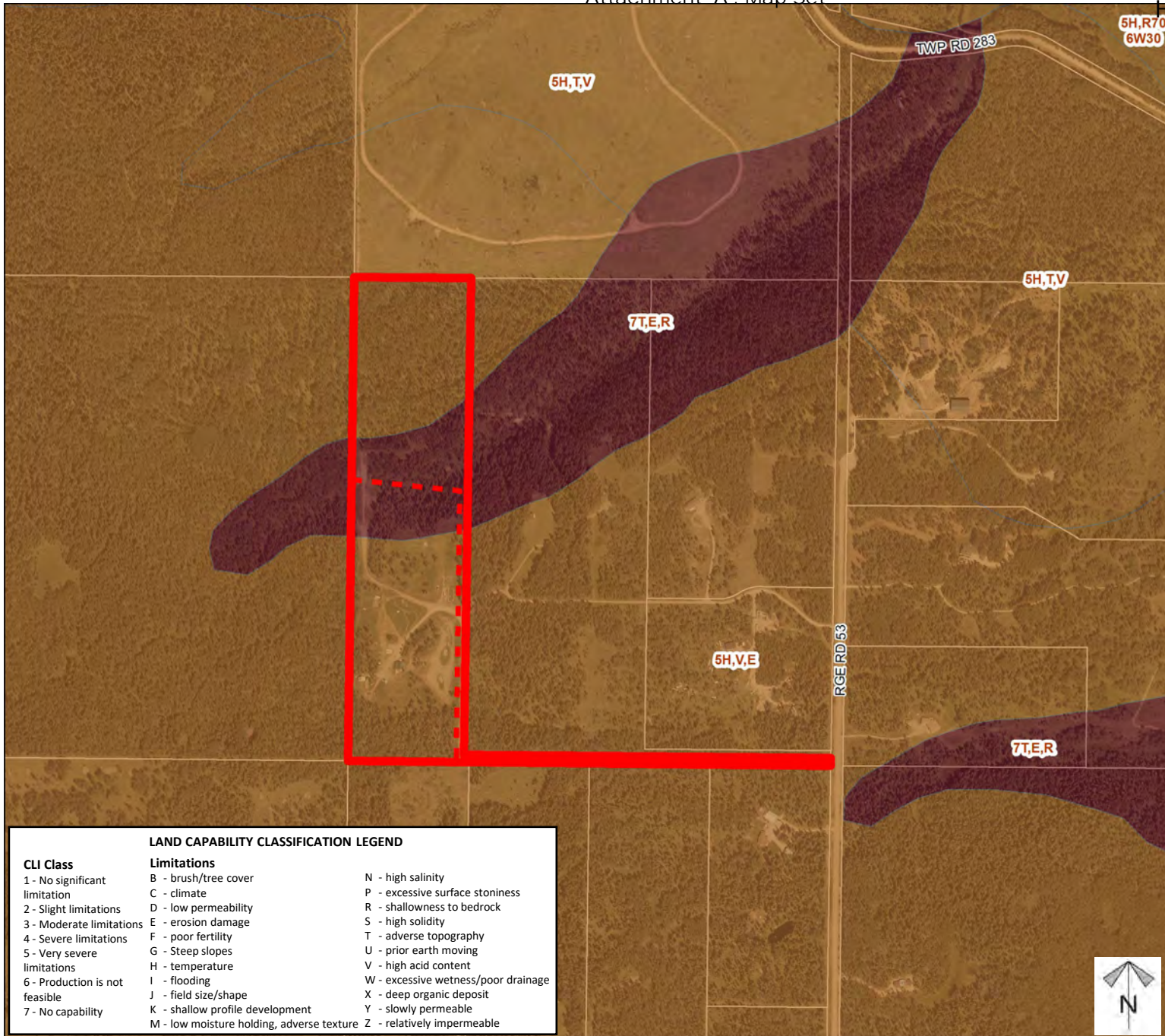
-  Subject Lands
-  Contour - 2 meters
-  Riparian Setbacks
-  Alberta Wetland Inventory
-  Surface Water

Division: 4
Roll: 08916010
File: PL20220098
Printed: Jan 9, 2024
Legal: A portion of NE-16-28-5-W5M

Soil Classifications

Subdivision Proposal

To create one ±8.21 hectare (±20.29 acre) parcel with a ±8.21 hectare (±20.29 acre) remainder.



LAND CAPABILITY CLASSIFICATION LEGEND

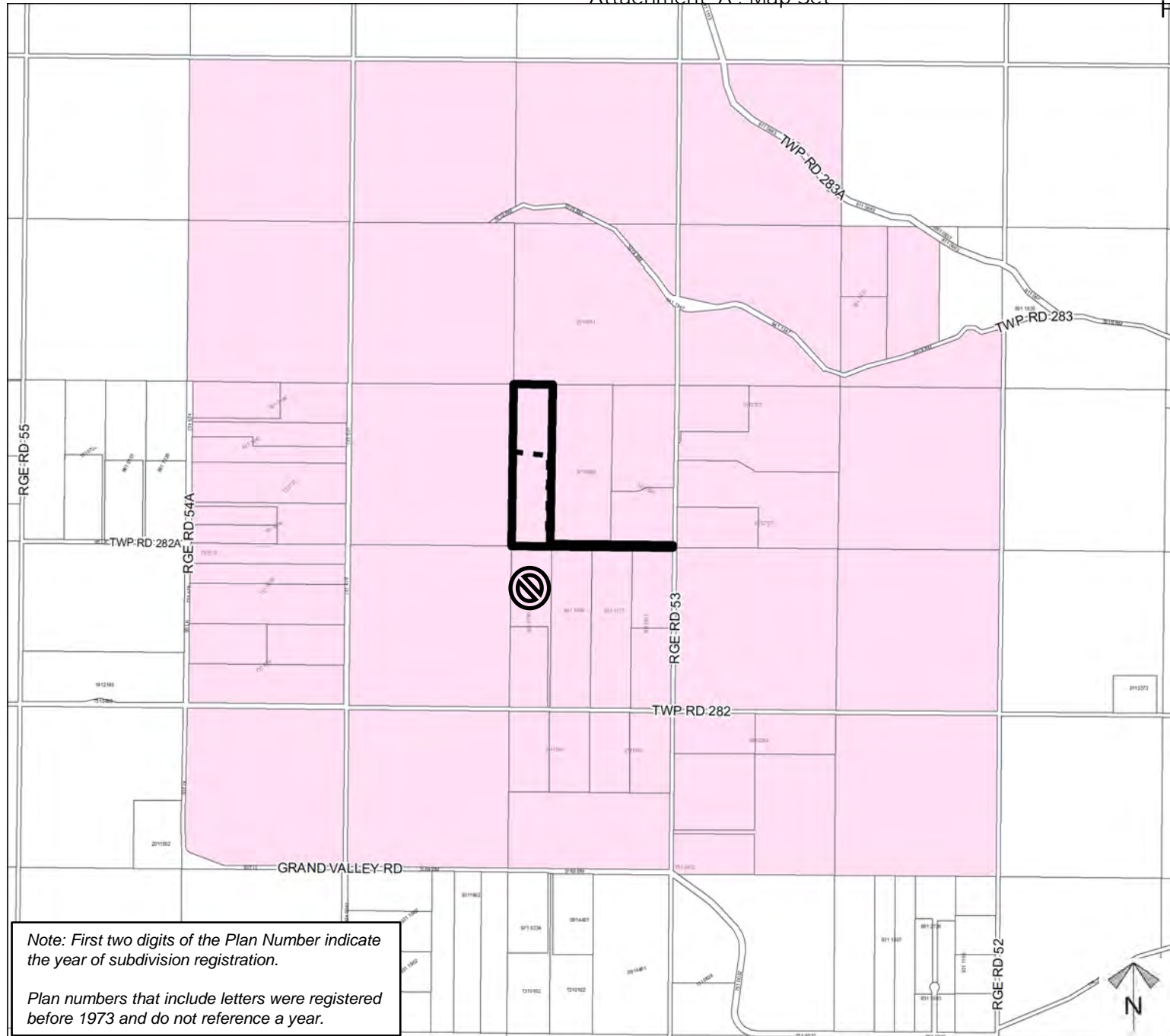
CLI Class	Limitations		
1 - No significant limitation	B - brush/tree cover	N - high salinity	P - excessive surface stoniness
2 - Slight limitations	C - climate	R - shallowness to bedrock	S - high solidity
3 - Moderate limitations	D - low permeability	T - adverse topography	U - prior earth moving
4 - Severe limitations	E - erosion damage	V - high acid content	W - excessive wetness/poor drainage
5 - Very severe limitations	F - poor fertility	X - deep organic deposit	Y - slowly permeable
6 - Production is not feasible	G - Steep slopes	Z - relatively impermeable	
7 - No capability	H - temperature		
	I - flooding		
	J - field size/shape		
	K - shallow profile development		
	M - low moisture holding, adverse texture		

Division: 4
 Roll: 08916010
 File: PL20220098
 Printed: Jan 9, 2024
 Legal: A portion of NE-16-28-5-W5M

Landowner Circulation Area

Subdivision Proposal

To create one ±8.21 hectare (±20.29 acre) parcel with a ±8.21 hectare (±20.29 acre) remainder.



Legend

Support



Not Support



Note: First two digits of the Plan Number indicate the year of subdivision registration.

Plan numbers that include letters were registered before 1973 and do not reference a year.

Division: 4
Roll: 08916010
File: PL20220098
Printed: Jan 9, 2024
Legal: A portion of NE-16-28-5-W5M

