

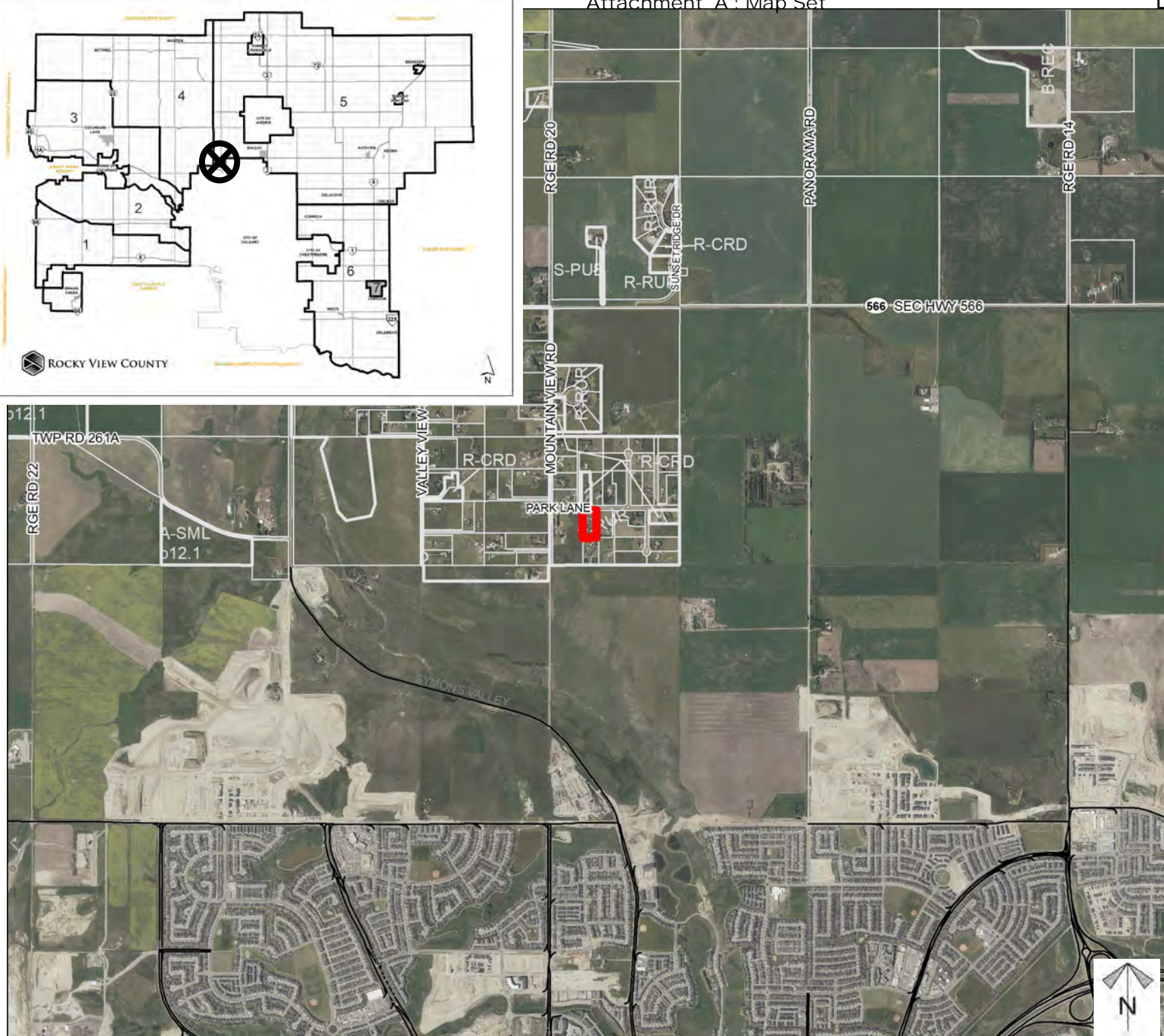
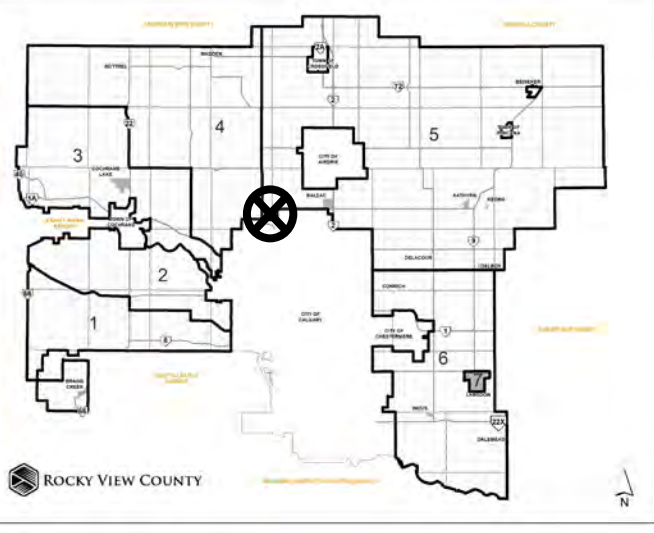


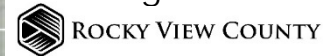
# Location & Context

## Redesignation and MSDP Proposal

To redesignate the subject lands from Residential, Rural District (R-RUR) to Direct Control District (DC) to facilitate future religious assembly and community uses.

*Division: 5  
Roll: 06507009  
File: PL20200068  
Printed: Sept 21, 2023  
Legal: A portion of SW-7-26-1-W5M*





# Development Proposal

## Redesignation and MSDP Proposal

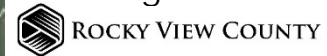
To redesignate the subject lands from Residential, Rural District (R-RUR) to Direct Control District (DC) to facilitate future religious assembly and community uses.



Division: 5  
Roll: 06507009  
File: PL20200068  
Printed: Sept 21, 2023  
Legal: A portion of SW-7-26-1-W5M



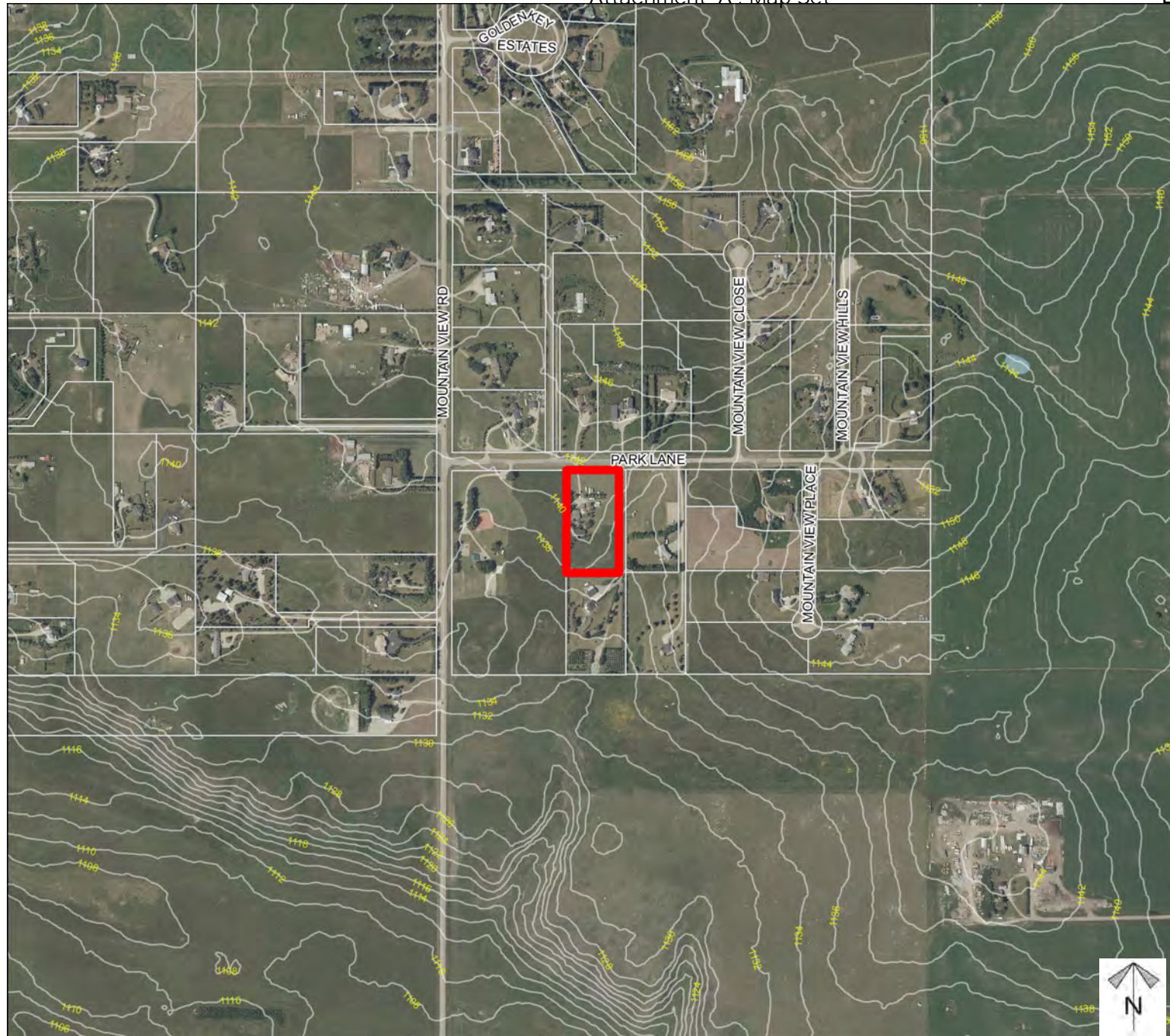




# Environmental

## Redesignation and MSDP Proposal

To redesignate the subject lands from Residential, Rural District (R-RUR) to Direct Control District (DC) to facilitate future religious assembly and community uses.

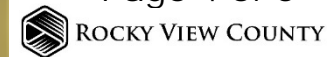


-  Subject Lands
-  Contour - 2 meters
-  Riparian Setbacks
-  Alberta Wetland Inventory
-  Surface Water



Division: 5  
 Roll: 06507009  
 File: PL20200068  
 Printed: Sept 21, 2023  
 Legal: A portion of SW-7-26-1-W5M

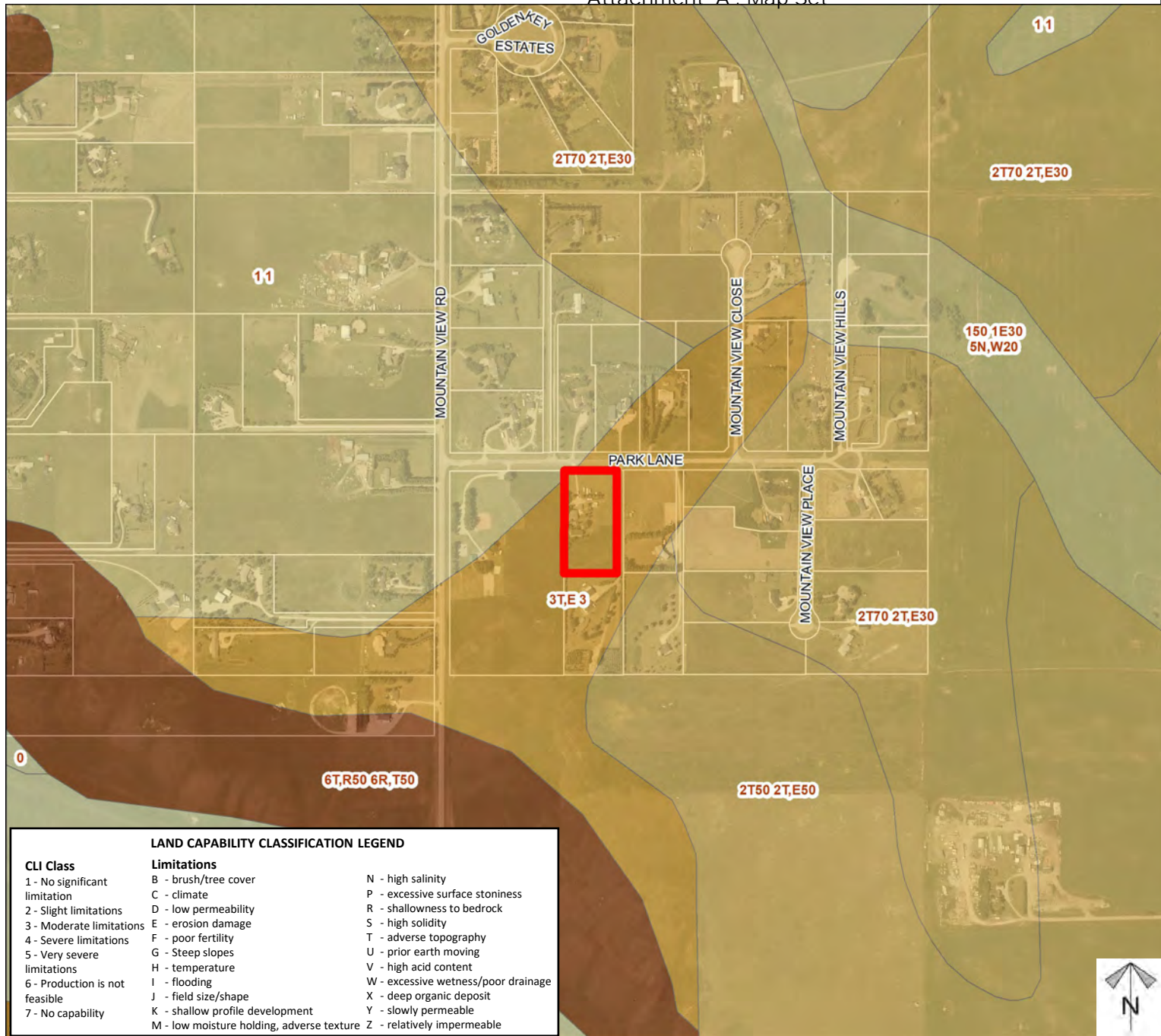




# Soil Classifications

## Redesignation and MSDP Proposal

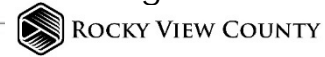
To redesignate the subject lands from Residential, Rural District (R-RUR) to Direct Control District (DC) to facilitate future religious assembly and community uses.



LAND CAPABILITY CLASSIFICATION LEGEND	
CLI Class	Limitations
1 - No significant limitation	B - brush/tree cover
2 - Slight limitations	C - climate
3 - Moderate limitations	D - low permeability
4 - Severe limitations	E - erosion damage
5 - Very severe limitations	F - poor fertility
6 - Production is not feasible	G - Steep slopes
7 - No capability	H - temperature
	I - flooding
	J - field size/shape
	K - shallow profile development
	M - low moisture holding, adverse texture
	N - high salinity
	P - excessive surface stoniness
	R - shallowness to bedrock
	S - high solidity
	T - adverse topography
	U - prior earth moving
	V - high acid content
	W - excessive wetness/poor drainage
	X - deep organic deposit
	Y - slowly permeable
	Z - relatively impermeable



Division: 5  
 Roll: 06507009  
 File: PL20200068  
 Printed: Sept 21, 2023  
 Legal: A portion of SW-7-26-1-W5M



# Landowner Circulation Area

## Redesignation and MSDP Proposal

To redesignate the subject lands from Residential, Rural District (R-RUR) to Direct Control District (DC) to facilitate future religious assembly and community uses.



### Legend

- Support
- Not Support
- Prior owner oppose
- Current owner support

29 - Support (land owner outside of circulation area or location unknown)

Note: First two digits of the Plan Number indicate the year of subdivision registration.

Plan numbers that include letters were registered before 1973 and do not reference a year.

Division: 5  
Roll: 06507009  
File: PL20200068  
Printed: Sept 21, 2023  
Legal: A portion of SW-7-26-1-W5M

