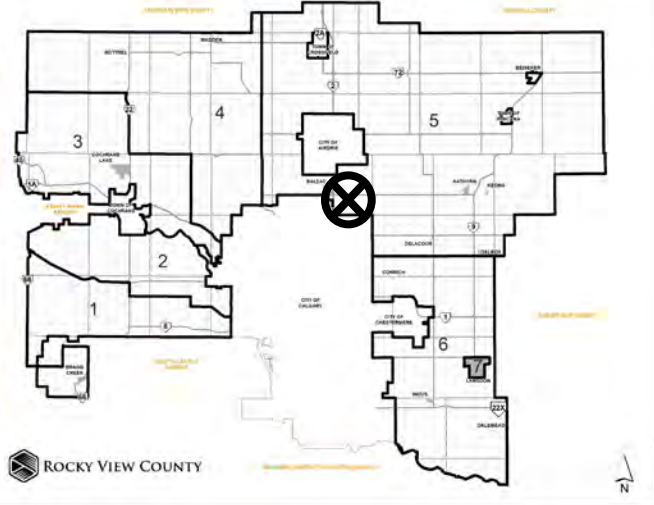


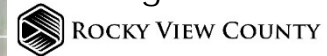
Location & Context

Redesignation Proposal

To allow a site-specific amendment to Direct Control District 99 (DC99) for increase the maximum building height from 12.00 metres (39.4 feet) to 16.00 metres (52.5 feet).



Division: 5
Roll: 06411006
File: PL20240027
Printed: Feb 2, 2024
Legal: A portion of NW-11-26-29-W4M



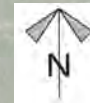
Development Proposal

Redesignation Proposal

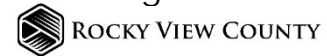
To allow a site-specific amendment to Direct Control District 99 (DC99) for increase the maximum building height from 12.00 metres (39.4 feet) to 16.00 metres (52.5 feet).

DC99 → DC99 (amended)

WESTLAND DR



*Division: 5
Roll: 06411006
File: PL20240027
Printed: Feb 2, 2024
Legal: A portion of NW-11-26-29-W4M*

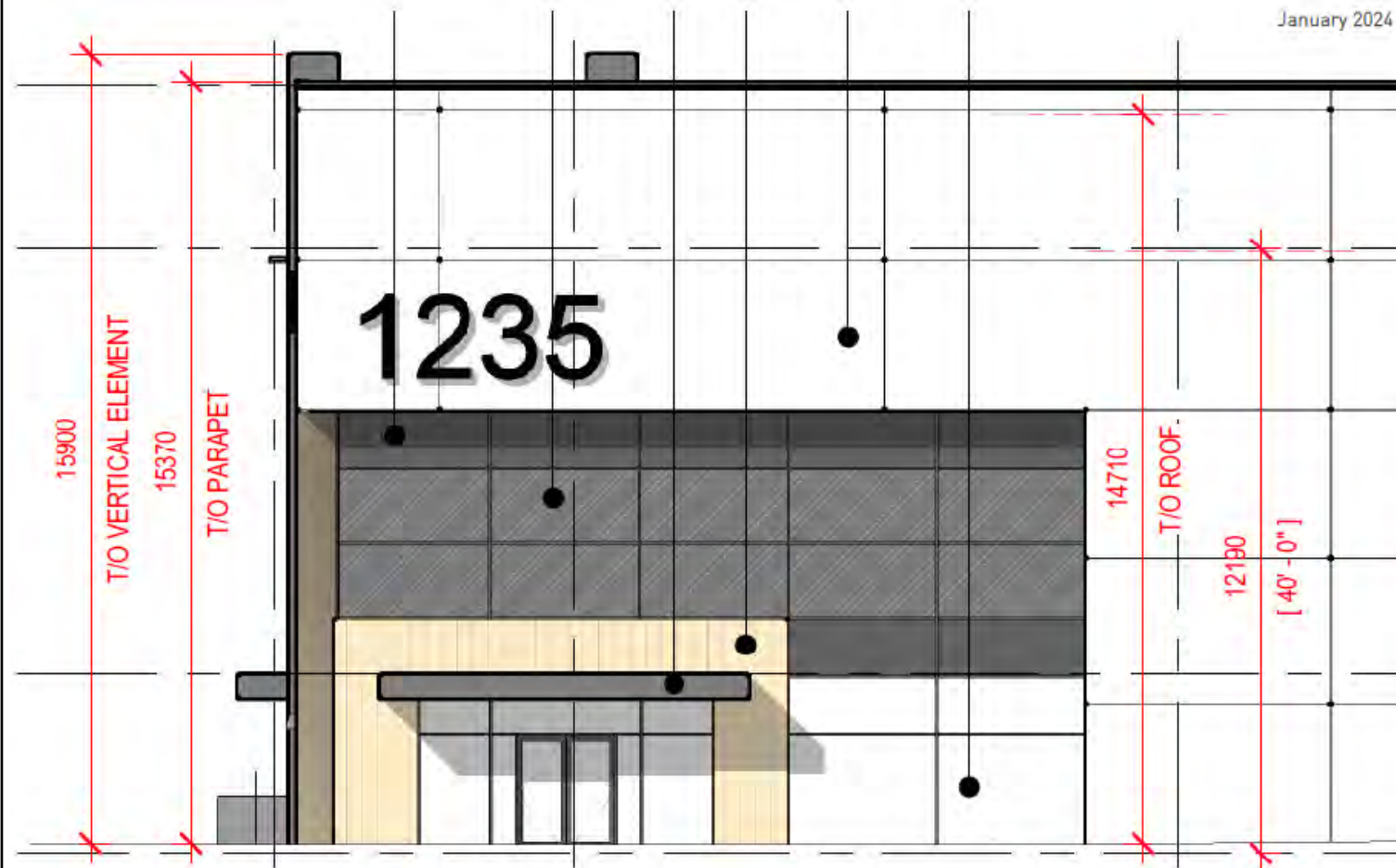


Development Proposal

Redesignation Proposal

To allow a site-specific amendment to Direct Control District 99 (DC99) for increase the maximum building height from 12.00 metres (39.4 feet) to 16.00 metres (52.5 feet).

January 2024



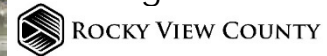
Triovest

Proposed Maximum Building Height

Lot 1, Block 1, Plan 061 4759



Division: 5
Roll: 06411006
File: PL20240027
Printed: Feb 2, 2024
Legal: A portion of NW-11-26-29-W4M



Environmental

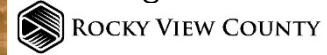
Redesignation Proposal

To allow a site-specific amendment to Direct Control District 99 (DC99) for increase the maximum building height from 12.00 metres (39.4 feet) to 16.00 metres (52.5 feet).



-  Subject Lands
-  Contour - 2 meters
-  Riparian Setbacks
-  Alberta Wetland Inventory
-  Surface Water

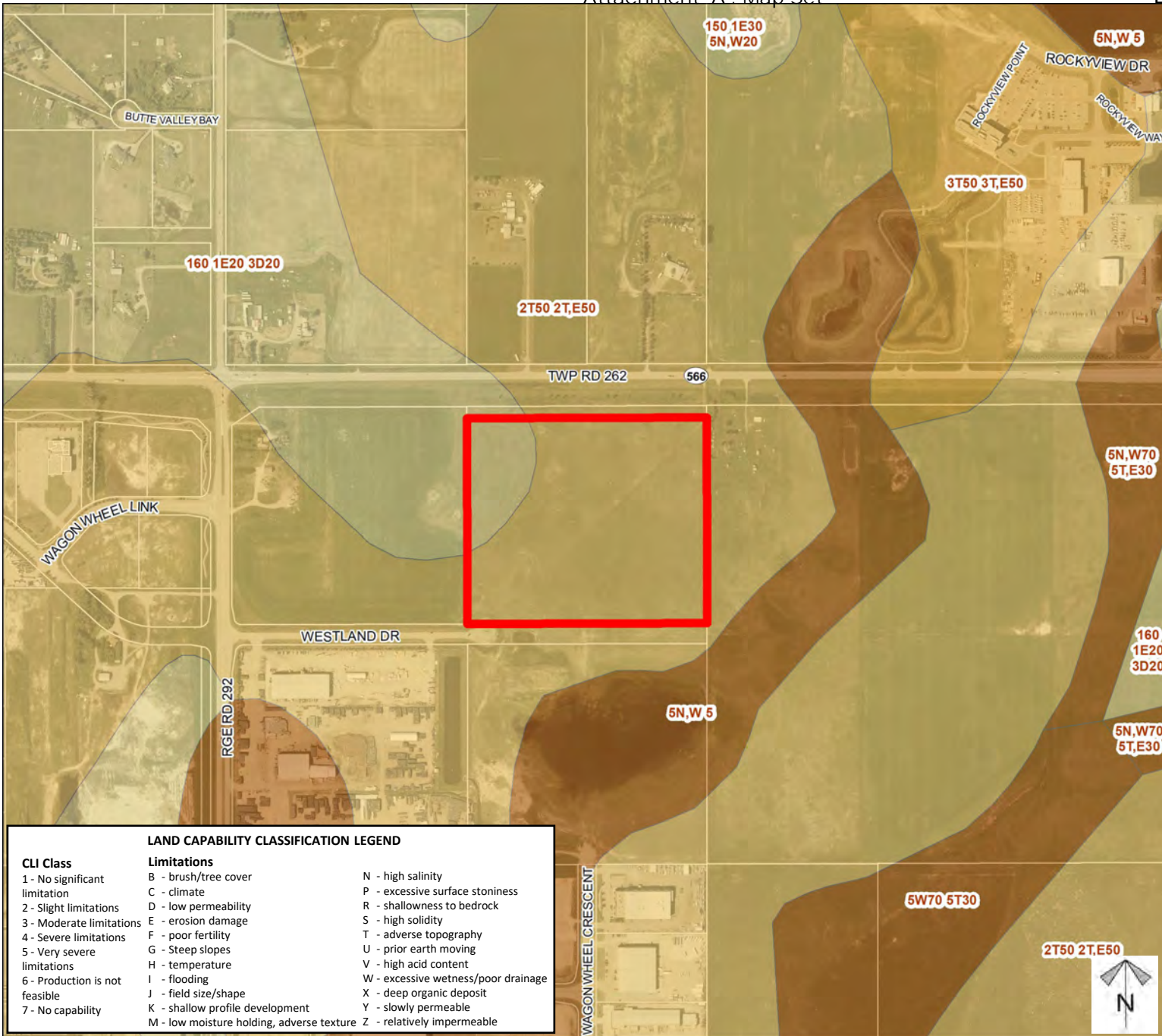
Division: 5
 Roll: 06411006
 File: PL20240027
 Printed: Feb 2, 2024
 Legal: A portion of NW-11-26-29-W4M



Soil Classifications

Redesignation Proposal

To allow a site-specific amendment to Direct Control District 99 (DC99) for increase the maximum building height from 12.00 metres (39.4 feet) to 16.00 metres (52.5 feet).



LAND CAPABILITY CLASSIFICATION LEGEND

CLI Class	Limitations	
1 - No significant limitation	B - brush/tree cover	N - high salinity
2 - Slight limitations	C - climate	P - excessive surface stoniness
3 - Moderate limitations	D - low permeability	R - shallowness to bedrock
4 - Severe limitations	E - erosion damage	S - high solidity
5 - Very severe limitations	F - poor fertility	T - adverse topography
6 - Production is not feasible	G - Steep slopes	U - prior earth moving
7 - No capability	H - temperature	V - high acid content
	I - flooding	W - excessive wetness/poor drainage
	J - field size/shape	X - deep organic deposit
	K - shallow profile development	Y - slowly permeable
	M - low moisture holding, adverse texture	Z - relatively impermeable

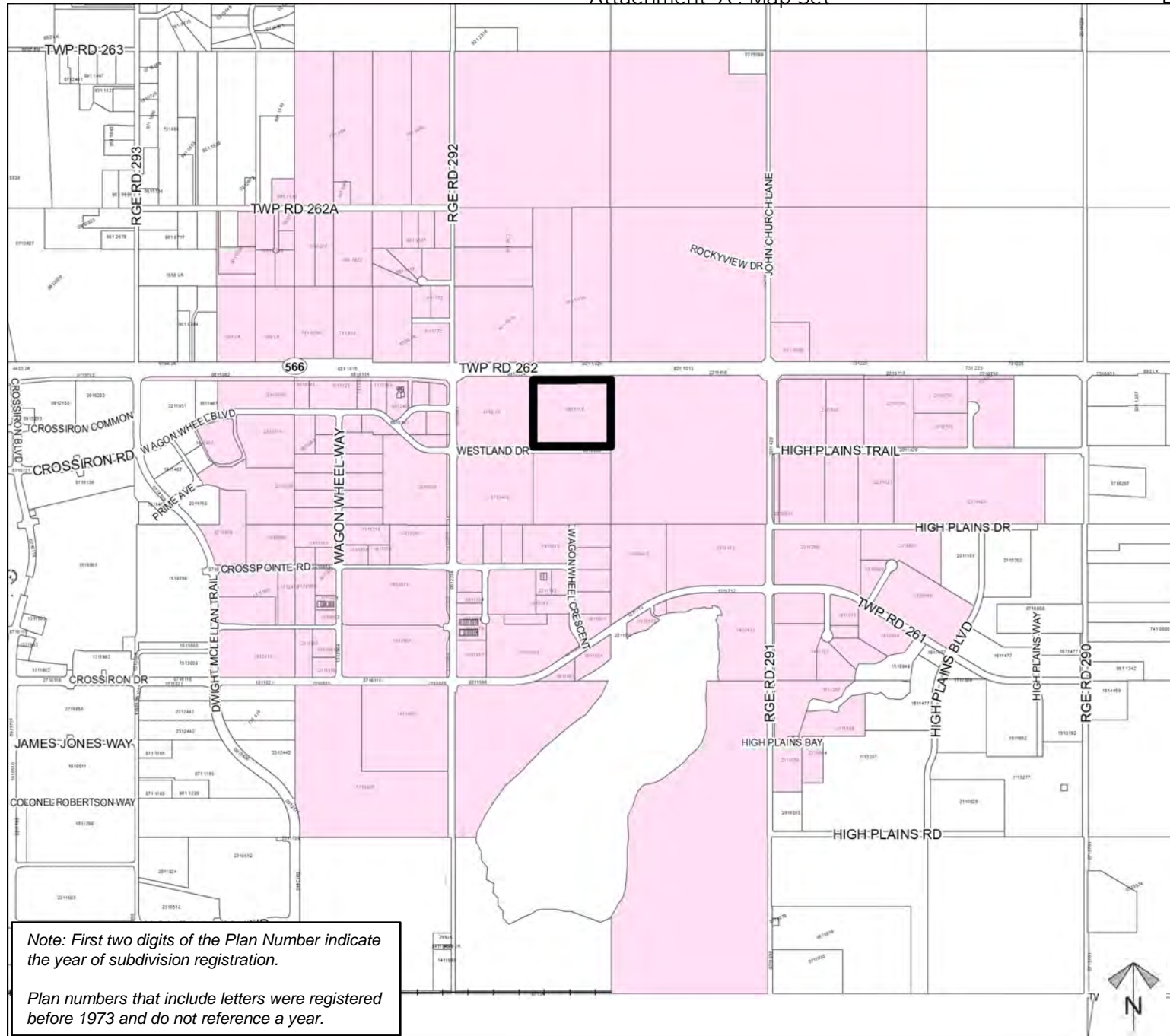
Division: 5
 Roll: 06411006
 File: PL20240027
 Printed: Feb 2, 2024
 Legal: A portion of NW-11-26-29-W4M



Landowner Circulation Area

Redesignation Proposal

To allow a site-specific amendment to Direct Control District 99 (DC99) for increase the maximum building height from 12.00 metres (39.4 feet) to 16.00 metres (52.5 feet).



Legend

Support



Not Support



Note: First two digits of the Plan Number indicate the year of subdivision registration.

Plan numbers that include letters were registered before 1973 and do not reference a year.

Division: 5
Roll: 06411006
File: PL20240027
Printed: Feb 2, 2024
Legal: A portion of NW-11-26-29-W4M

