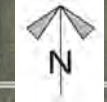
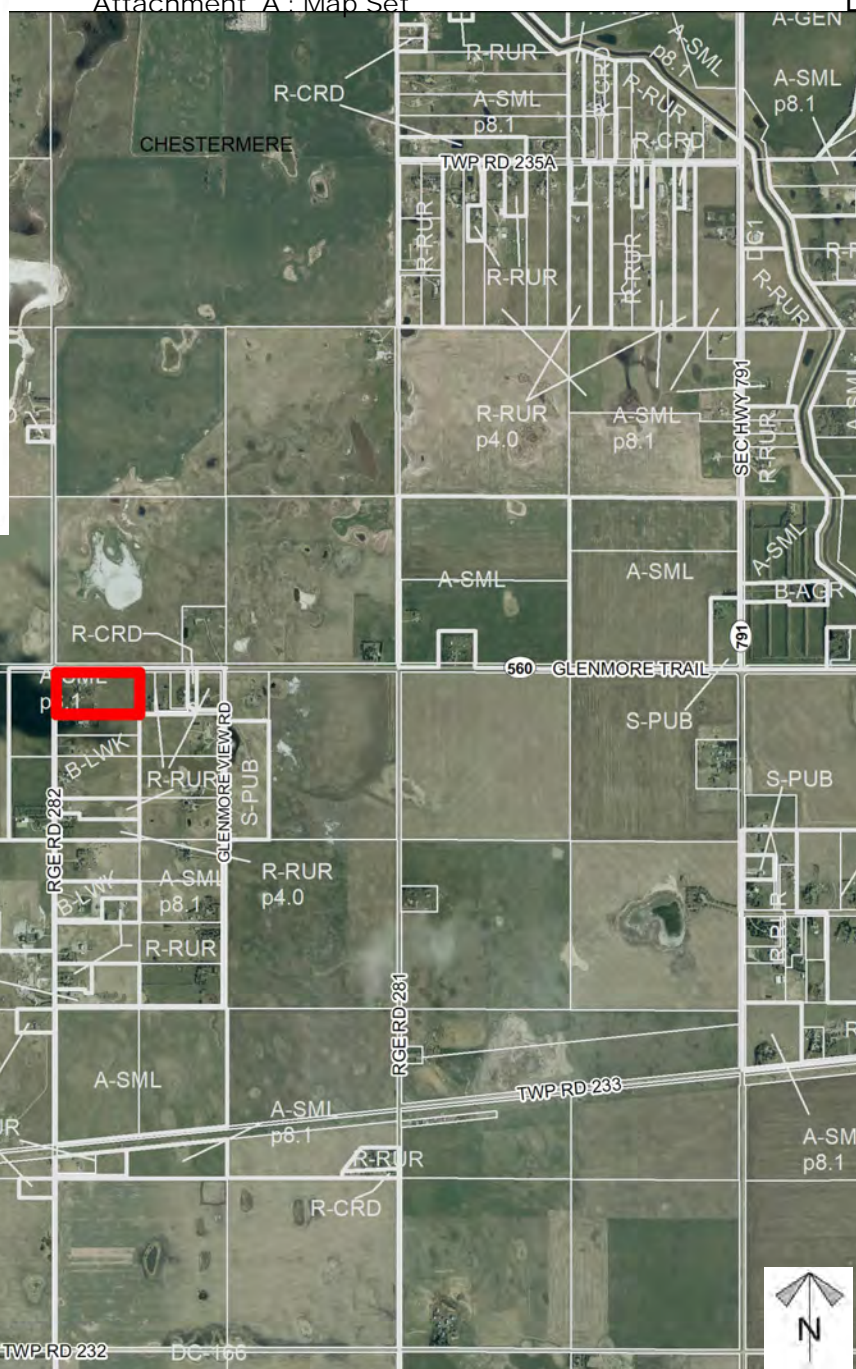
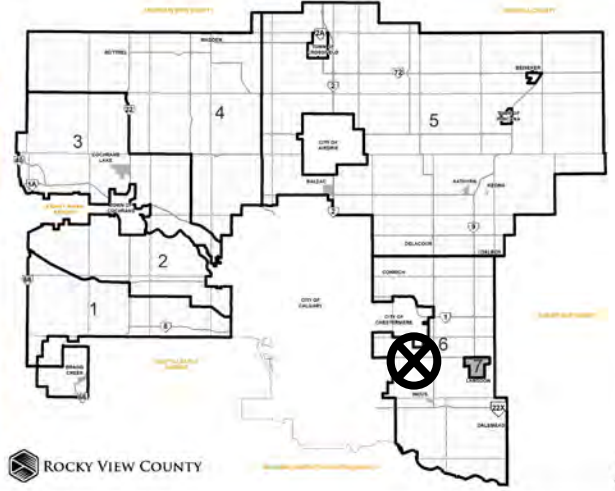


Location & Context

Redesignation Proposal

To redesignate the subject lands from Agricultural, Small Parcel District (A-SML p8.1) to Business, Live-Work District (B-LWK) to accommodate future business uses on the lands



Division: 6
Roll: 03323013
File: PL20210161
Printed: Mar 18, 2024
Legal: Block:1 Plan:7311129
within NW-23-23-28-W04M



Development Proposal

Redesignation Proposal

To redesignate the subject lands from Agricultural, Small Parcel District (A-SML p8.1) to Business, Live-Work District (B-LWK) to accommodate future business uses on the lands



A-SML p8.1 → B-LWK
±7.82 ha
(±19.33 ac)

560 GLENMORE TRAIL

RGE RD 282



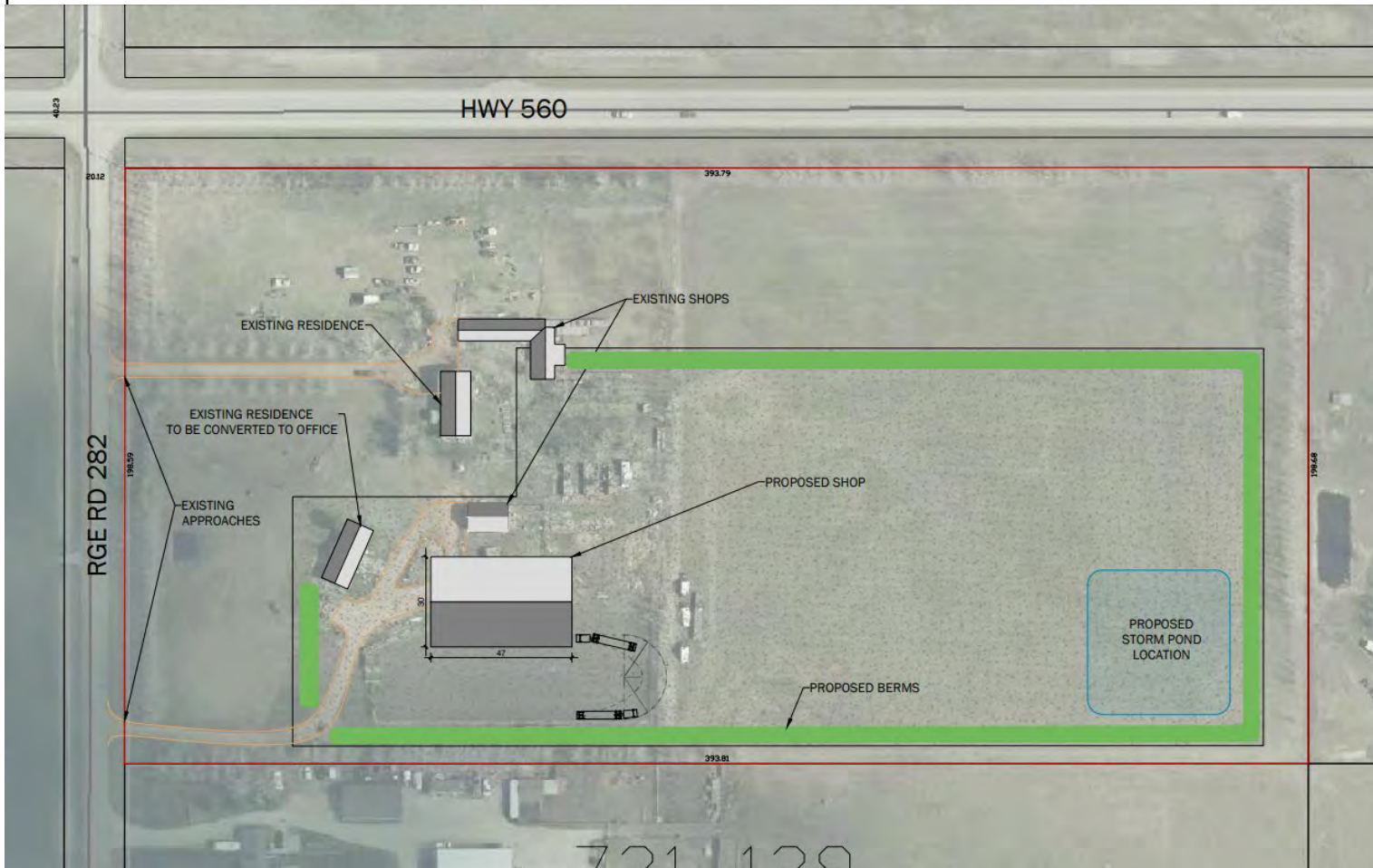
Division: 6
Roll: 03323013
File: PL20210161
Printed: Mar 18, 2024
Legal: Block:1 Plan:7311129
within NW-23-23-28-W04M



Development Proposal

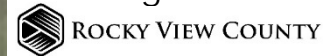
Redesignation Proposal

To redesignate the subject lands from Agricultural, Small Parcel District (A-SML p8.1) to Business, Live-Work District (B-LWK) to accommodate future business uses on the lands



Division: 6
 Roll: 03323013
 File: PL20210161
 Printed: Mar 18, 2024
 Legal: Block:1 Plan:7311129
 within NW-23-23-28-W04M





Environmental

Redesignation Proposal

To redesignate the subject lands from Agricultural, Small Parcel District (A-SML p8.1) to Business, Live-Work District (B-LWK) to accommodate future business uses on the lands



-  Subject Lands
-  Contour - 2 meters
-  Riparian Setbacks
-  Alberta Wetland Inventory
-  Surface Water

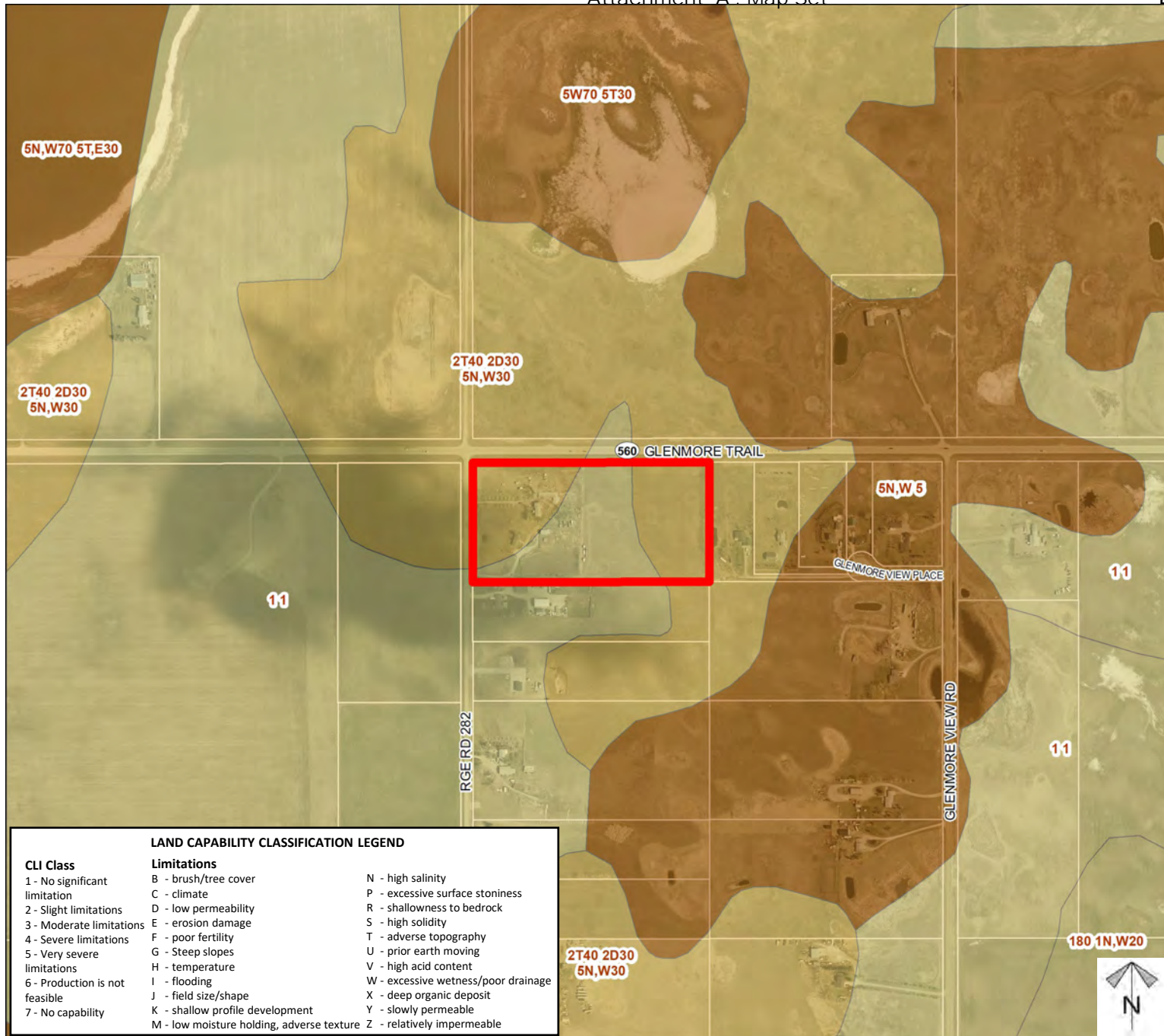
Division: 6
 Roll: 03323013
 File: PL20210161
 Printed: Mar 18, 2024
 Legal: Block:1 Plan:7311129
 within NW-23-23-28-W04M



Soil Classifications

Redesignation Proposal

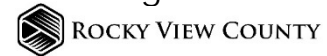
To redesignate the subject lands from Agricultural, Small Parcel District (A-SML p8.1) to Business, Live-Work District (B-LWK) to accommodate future business uses on the lands



LAND CAPABILITY CLASSIFICATION LEGEND

CLI Class	Limitations	
1 - No significant limitation	B - brush/tree cover	N - high salinity
2 - Slight limitations	C - climate	P - excessive surface stoniness
3 - Moderate limitations	D - low permeability	R - shallowness to bedrock
4 - Severe limitations	E - erosion damage	S - high solidity
5 - Very severe limitations	F - poor fertility	T - adverse topography
6 - Production is not feasible	G - Steep slopes	U - prior earth moving
7 - No capability	H - temperature	V - high acid content
	I - flooding	W - excessive wetness/poor drainage
	J - field size/shape	X - deep organic deposit
	K - shallow profile development	Y - slowly permeable
	M - low moisture holding, adverse texture	Z - relatively impermeable

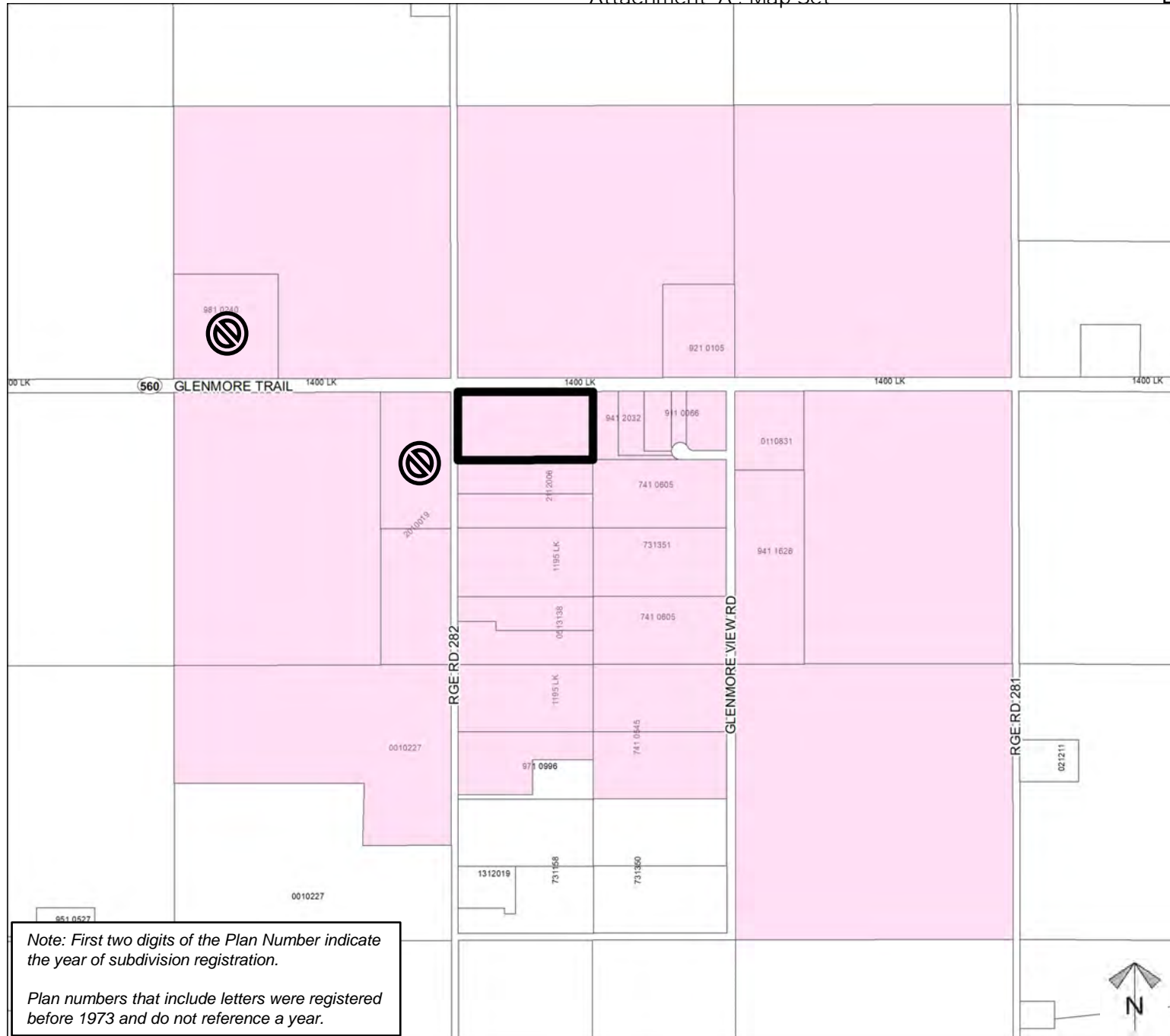
Division: 6
 Roll: 03323013
 File: PL20210161
 Printed: Mar 18, 2024
 Legal: Block:1 Plan:7311129
 within NW-23-23-28-W04M



Landowner Circulation Area

Redesignation Proposal

To redesignate the subject lands from Agricultural, Small Parcel District (A-SML p8.1) to Business, Live-Work District (B-LWK) to accommodate future business uses on the lands



Legend

- Support
- Not Support

Note: First two digits of the Plan Number indicate the year of subdivision registration.

Plan numbers that include letters were registered before 1973 and do not reference a year.

Division: 6
Roll: 03323013
File: PL20210161
Printed: Mar 18, 2024
Legal: Block: 1 Plan: 7311129
within NW-23-23-28-W04M

