



Public Presentation Committee

Subject:	SR1 and Rocky View County Regional Pathway
Date:	April 17, 2024
Presenter:	Ronda Rankin, Springbank Trails and Pathways Association

REPORT SUMMARY

Springbank Trails and Pathways Association will provide a presentation on SR1 and Rocky View County Regional Pathway.

ADMINISTRATION’S RECOMMENDATION

THAT the Public Presentation Committee receive the SR1 and Rocky View County Regional Pathway presentation as information.

BACKGROUND

The Public Presentation Committee provides a forum for members of the public and stakeholder groups to present information and updates to the County to ensure the County understands the needs and concerns of its communities. One of the Committee’s functions is to hear presentations from organizations, groups, or individuals such as Springbank Trails and Pathways Association.

DISCUSSION

Springbank Reservoir (SR1) Land Use process was focused on providing a framework for future activities specifically on the lands falling within the SR1 Project. The contribution from SR1 to both pathways and public lands with river access is a critical component of our regional recreation vision. There are no pathways connecting very active lifestyles and fast-growing local populations between Cochrane, Harmony, and Bragg Creek, nor connecting their highly developed adjacent trail systems. SR1 lands would enable a safe and logical regional spine of pathways with access to public spaces within Rocky View County.

ATTACHMENTS

- Attachment A: Springbank Trails and Pathways Association Request to Present Form
- Attachment B: Springbank Trails and Pathways Association Presentation



ROCKY VIEW COUNTY PUBLIC PRESENTATION COMMITTEE (PPC) REQUEST TO PRESENT FORM

Name of the group/individual:	Springbank Trails and Pathways Association (STAPA)
Representative(s) for the group:	Ronda Rankin
Contact telephone/cell number:	403-519-6870
E-mail:	ronda@springbankpathways.ca
Presentation Topic:	SR1 and Rocky View County Regional Pathway

Do you have an active planning application on this matter? Yes No

Are you planning on submitting a planning application on this in the next six (6) months? Yes No

Please check off the appropriate information about the presentation:

Information - Public Interest Community Group Update Development Proposal

Other, please explain

Overview of the topic and purpose of your presentation:

Springbank Reservoir (SR1) Land Use process was focused on providing a framework for future activities specifically on the lands falling within the SR1 Project. The contribution from SR1 to both pathways and public lands with river access is a critical component of our regional recreation vision. There are no pathways connecting very active lifestyles and fast -growing local populations between Cochrane, Harmony, and Bragg Creek, nor connecting their highly developed adjacent trail systems. SR1 lands would enable a safe and logical regional spine of pathways with access to public spaces within RVC.

If a group, tell us about your group (mandate/membership, including a statement on why this matter should go before PPC)

STAPA is a volunteer group committed to establishing a safe and accessible, regionally, integrated trail and pathway system connecting generations of residents, while preserving the diverse natural heritage of the Springbank community. Councillor Don Kochan presented a motion to Council to prepare a report on the pathway connections to SR1. STAPA would like to provide community feedback on this topic.

The members of the Public Presentation Committee are County Councillors, but the meetings are not Council meetings, and Council decisions are not made.

Meetings are held to receive information and share your vision with the Committee and not to ask for advice on what should be done on a specific property.

If you would like to bring a matter to the Committee's attention, that does not require a decision of Council, you can apply to make a presentation to the Committee.

Examples of presentations that the Public can present to the Committee include:

- Developers and/or landowners can submit their vision for a future project that will not require a Council decision;
- not-for-profit organizations about their work in the community, or about recognition for special volunteers;
- post-secondary institutions or research groups about studies or surveys that might interest the County;
- resident or community groups about future plans or current activities that the groups are involved in; or
- businesses or organizations that wish to apprise Committee members of projects or initiatives that will not require a Council decision.

Examples of presentations that Public cannot be accepted by the Committee include:

- the subject matter of the presentation is related to an active application from the presenter or the presenter intends to submit an application within six months of the presentation date;
- the subject matter of the presentation is outside of the authority or jurisdiction of Rocky View County;
- the subject matter of the presentation is more appropriate for a different committee, board, commission, or other body; or
- individuals or groups wishing to provide technical, legal, or similar information when they possess no relevant qualifications or expertise.

Presentations are strictly limited to 20 minutes, but Committee members may ask questions afterwards.

How to Submit a Presentation Request

Forms can be submitted via email to legislativeservices@rockyview.ca, or print it and send or drop off a paper copy to:

Rocky View County
Attention: Legislative and Intergovernmental Services
262075 Rocky View Point
Rocky View County, AB
T4A 0X2

Please make your requests as early as possible. Requests are to be submitted to four weeks prior to the scheduled PPC meeting order for the presentation to be included on the agenda.

Once you have submitted your request, a member from the Legislative & Intergovernmental Services department will be in contact with you to discuss next steps.

If you are placed on the meeting agenda, you must provide Legislative and Intergovernmental Services with a final copy of any print or visual materials (including PowerPoint or similar slides at least 15 days before the presentation. Once submitted, changes to this material are not permitted. If changes are needed, your presentation will be rescheduled.

Questions

If you have questions about presenting to the Public Presentation Committee, contact Rocky View County Legislative and Intergovernmental Services at 403.230.1401 or legislativeservices@rockyview.ca.



SPRINGBANK TRAILS AND PATHWAYS ASSOCIATION

Springbank Off-stream Reservoir (SR1) Regional Trail Connections and River Access



Rocky View County
Public Presentation Committee
April 17, 2024



Agenda

Today's Objectives

Who We Are

Regional Trail Vision

Regional Trail Connectivity

Public River Access

Rocky View County Support





TODAY'S OBJECTIVES



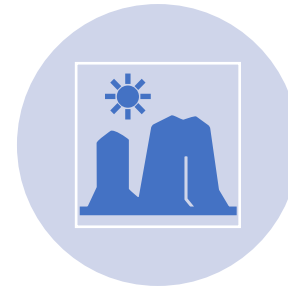
The community resource for trails and pathways in Springbank, through community involvement and engagement.



Present Regional Trail Vision.



Regional Trail Connectivity and Public River Access within SR1 Recreation Recommendations.



Request Rocky View County's support in the development of Regional Trails and Public River Access.



WHO WE ARE

“The Springbank Trails and Pathways Association is a volunteer group committed to establishing a safe and accessible, regionally integrated trail and pathway system connecting generations of residents, while preserving the diverse natural heritage of the Springbank community.”

Activities

- Enhance regional connectivity and trail development
- Expand public access to rivers and natural areas
- Mapping

Springbank Community & Board Participation

- Springbank Community Association (Board)
- Alberta TrailNet (Board)
- Springbank Community groups and landowners

Government Engagement

- Joint Land Use Advisory Committee (JLUAC) member and Editorial Team
- Alberta Environment and Protective Areas (AEPA) & SR1 Operations Discussions
- Rocky View County



Regional Trail Vision

Integrate Springbank Community priorities into Regional Recreational Infrastructure

Establish extensive multi-use infrastructure development opportunities

- Identify corridors through Crown lands and leverage paving of RR40
- Develop as Trans Canada Trail extension/completion from Cochrane/Glenbow Ranch to Bragg Creek/Kananaskis Country
- Expand and integrate Bragg Creek, Harmony, Cochrane and City of Calgary trail systems to further complement regional connectivity in growing communities

Ensure infrastructure development is focused, leveraged, and costs optimized to generate enhanced regional benefits in a staged manner

Incorporate public safety concerns



Stakeholder Engagement

- Springbank Community Association (SCA)*
- Springbank Planning Association (SPA)
- SR1 Government Agencies
- Alberta Agriculture & Irrigation (AGI) – SR1 Operations
- Rocky View County
- Trans Canada Trail
- Alberta TrailNet Society
- Greater Bragg Creek Trails Association
- Harmony
- Glenbow Ranch Park Foundation
- Cochrane
- Community Groups

* *SCA has endorsed this presentation*



Land Use “Gaps” in SR1 Connectivity

- Regional Recreation Vision integrated into JLUAC Final Recommendations Report
- Draft Land Use Plan developed to SR1 Footprint... defined as a subset of the greater Alberta Transportation and Economic Corridors (ATEC) lands purchased for SR1 Project
 - Draft Land Use Plan reflects “*some but not all*” recreation components recommended by JLUAC within ATEC controlled lands
 - Land Use Plan purposefully reflects broad “Policy Wording” and is silent on prescriptive details
 - Adaptive Management was identified as a tool to address and provide future operational and public access flexibility
 - Public access restrictions require flexibility to enable reasonable access outside flood events
- ✓ Pathway along Berm
 - Proposed “Calendar Restrictions” on Public Access an area of concern
- ✓ Regional Pathway Connection Areas noted
 - Public Safety at Hwy 22 of particular concern



Regional Trail Connectivity to SR1

- Regional connections included in Draft Land Use Plan with three regional connections identified
- Regional Connectivity to SR1 is critical across ATEC lands, and would benefit from additional clarity within Draft Land Use Plan policies:

Berm to RR35

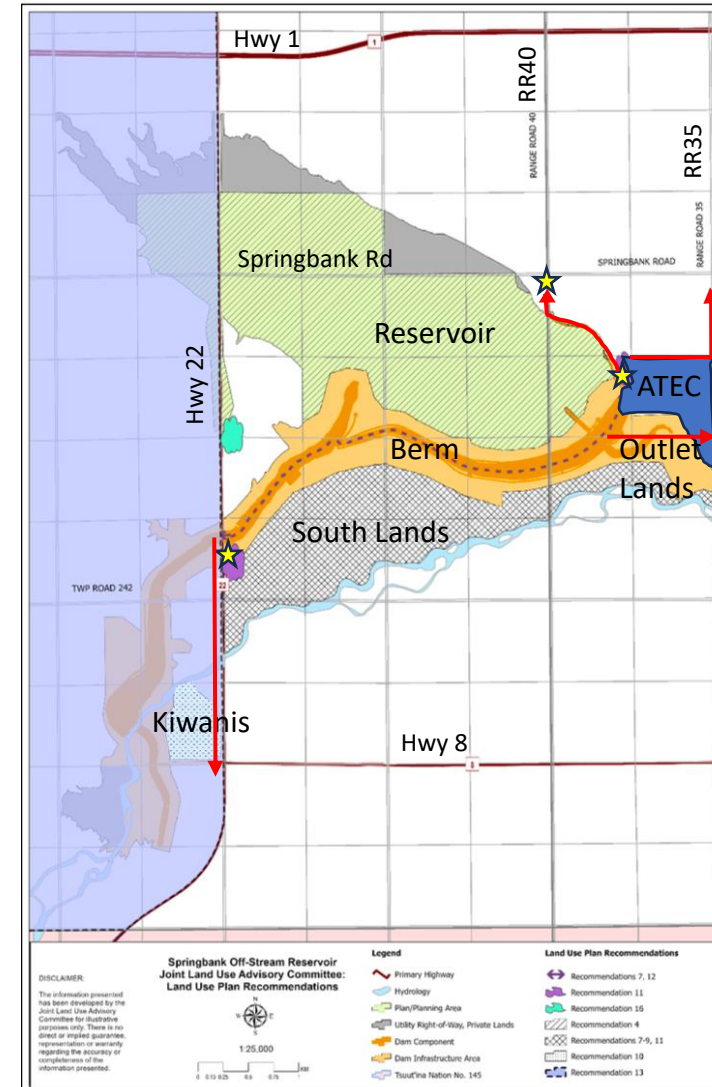
- North - ATEC Lands adjacent to South edge of Sec 19
- South - ATEC Lands through Outlet Lands

Berm to RR40

- Follow Perimeter of SR1 lands to RR40 ROW

Diversion Channel to Hwy 22 & Hwy 8 “Traffic Circle”

- Safe *crossing* of Hwy 22 needed
- Right of Way (ROW) required parallel to Hwy 22



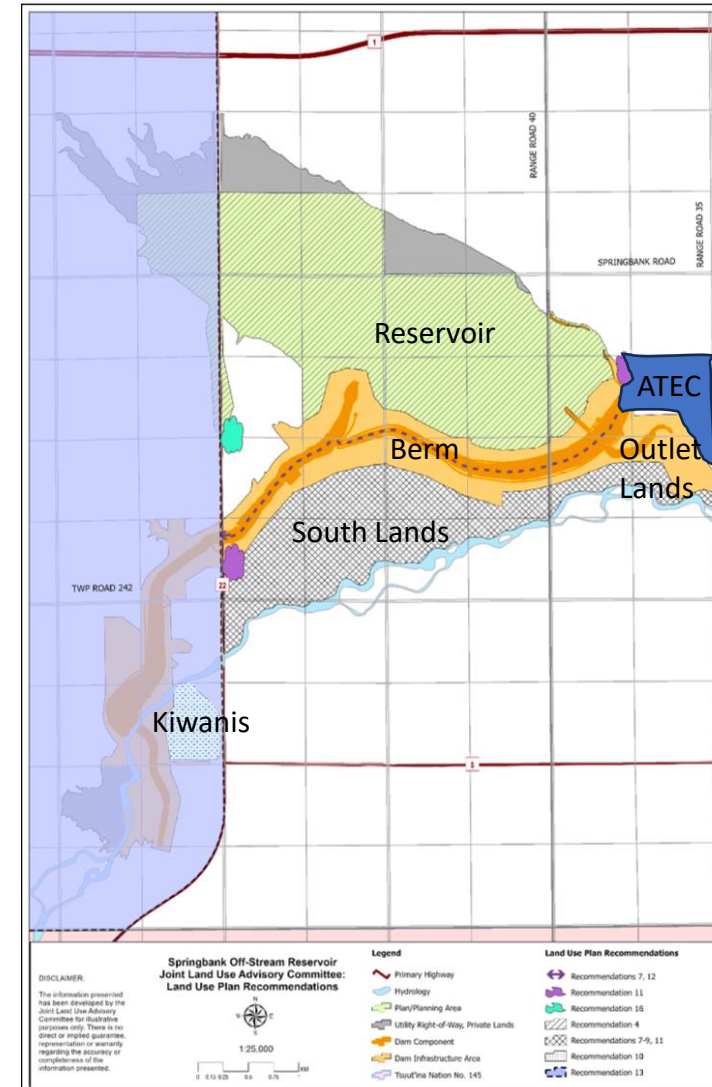
Map 3: The Joint Land Use Advisory Committee- Land Use Plan Recommendations



Public River Access

JLUAC recommendations included Public River Access to “surplus” ATEC lands

- Recommendation 9
 - Land Use (inside SR1 Footprint) for “Outlet Lands” to include public access
- Recommendation 8
 - ATEC surplus land (outside SR1 Footprint) “South Lands” to be retained as Crown lands providing public river access
- Recommendation 10
 - Kamp Kiwanis lands to be retained and considered for public use including repurposing of existing infrastructure





Request for Rocky View County Support



Support Community Survey Feedback and Initiatives to Expand Regional Pathways and Provide Public River Access



Support SR1 Draft Land Use Plan (Policy 7.2)

Multi-Use Pathway along Berm (i.e., “non-motorized recreational user access across dam structure and portion of diversion channel”)



Support Retention of ATEC owned South Lands for Public River Access, include Public Access to Outlet Lands, and assess non-motorized use and multi-use access to Kiwanis Lands

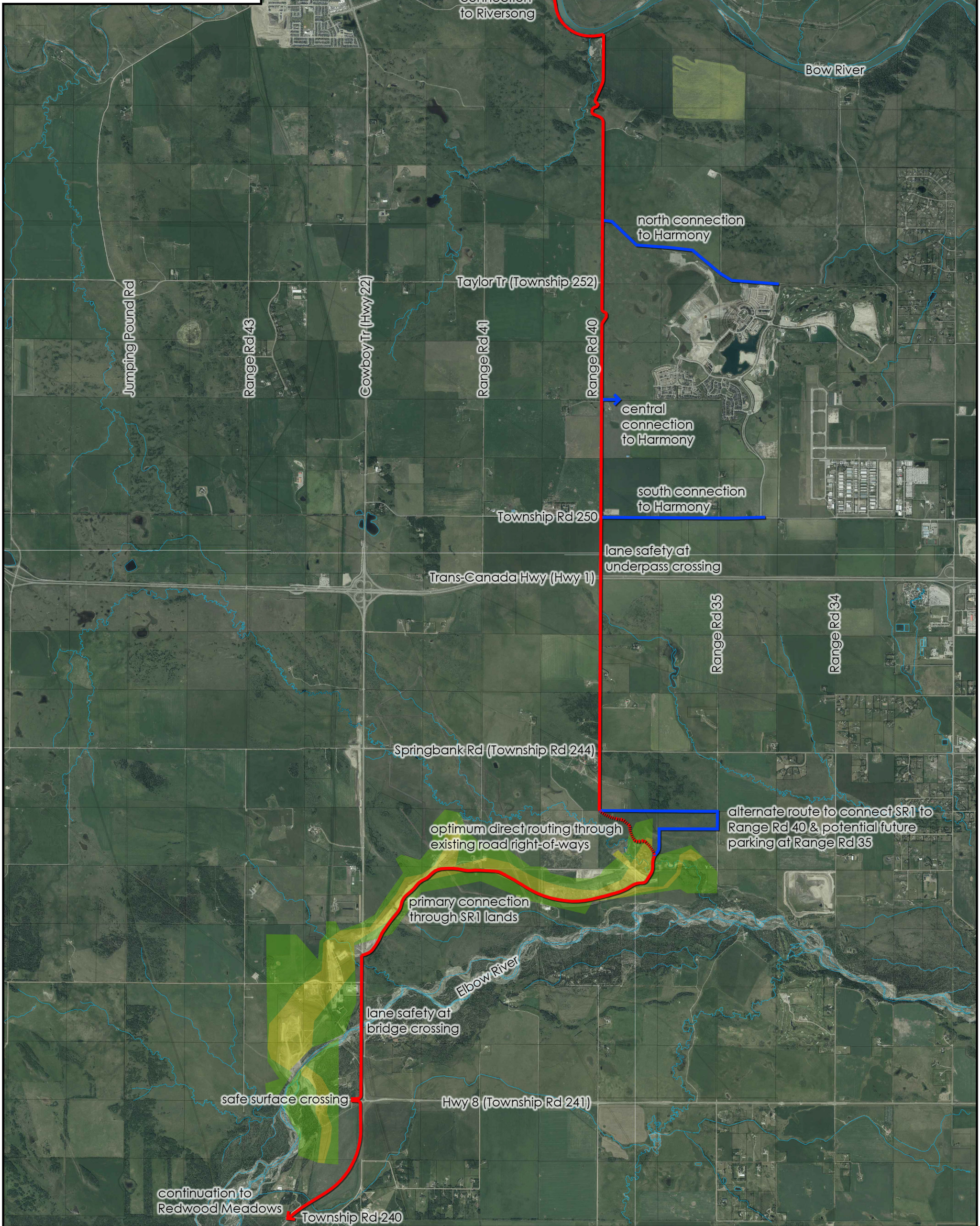


Incorporate Regional Vision in County Active Transportation Plan to Enable and Support Staged Regional Pathway Development

County Active Transportation Plan is planned for update
Establish multiple connections from SR1 through ATEC lands to proposed Regional Pathways in County (per Land Use Plan)
Stage development of Trans Canada Trail extension from Cochrane to Bragg Creek to complete Regional Pathway Vision

Legend

- SR1 Dam
- SR1 Dam Infrastructure Area
- Primary Pathway Route
- Secondary Pathway Connector



Springbank Trails and Pathways Association

Conceptual Routing Map - Redwood Meadows to Cochrane

March 2024

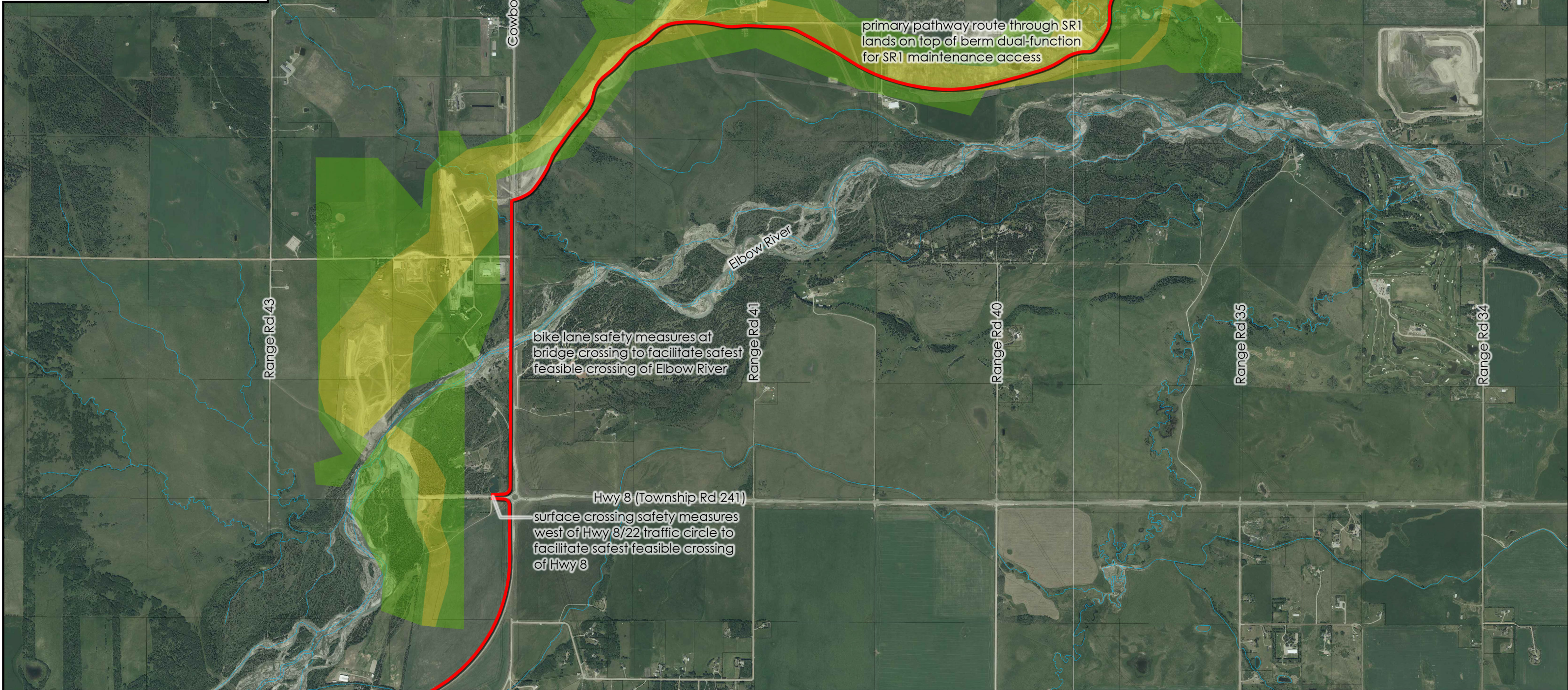


McElhanney



Legend

- SR1 Dam
- SR1 Dam Infrastructure Area
- Primary Pathway Route
- Secondary Pathway Connector



Springbank Trails and Pathways Association

Conceptual Routing Map Enlargement 3 - SR1 Lands

March 2024

