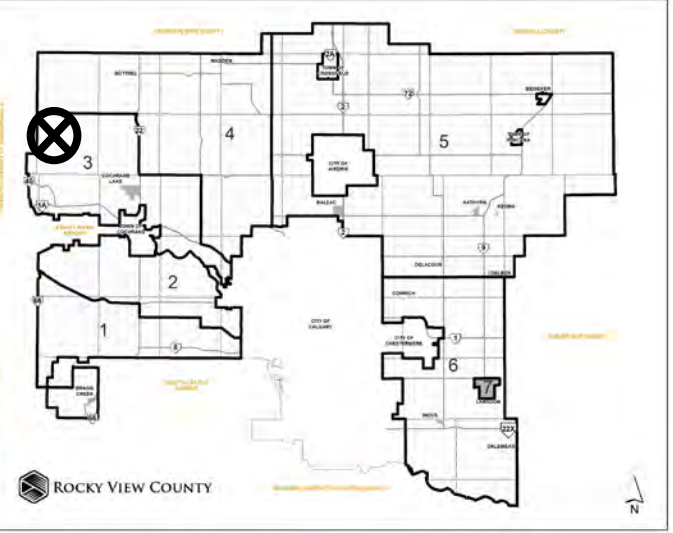


Location & Context

Subdivision Proposal

To create a ± 32.37 hectare (± 80.00 acre) parcel (Lot 1) with a ± 32.37 hectare (± 80.00 acre) remainder (Lot 2).

Division: 3
Roll: 07920001
File: PL20220177
Printed: Oct 12, 2022
Legal: A portion of NW-20-27-05-W05M



Development Proposal

Subdivision Proposal

To create a ± 32.37 hectare (± 80.00 acre) parcel (Lot 1) with a ± 32.37 hectare (± 80.00 acre) remainder (Lot 2).



Lot 2
± 32.37 hectare
(± 80.00 acre)

Lot 1
± 32.37 hectare
(± 80.00 acre)



Division: 3
Roll: 07920001
File: PL20220177
Printed: Oct 12, 2022
Legal: A portion of NW-20-27-05-W05M

Environmental

Subdivision Proposal

To create a ± 32.37 hectare (± 80.00 acre) parcel (Lot 1) with a ± 32.37 hectare (± 80.00 acre) remainder (Lot 2).



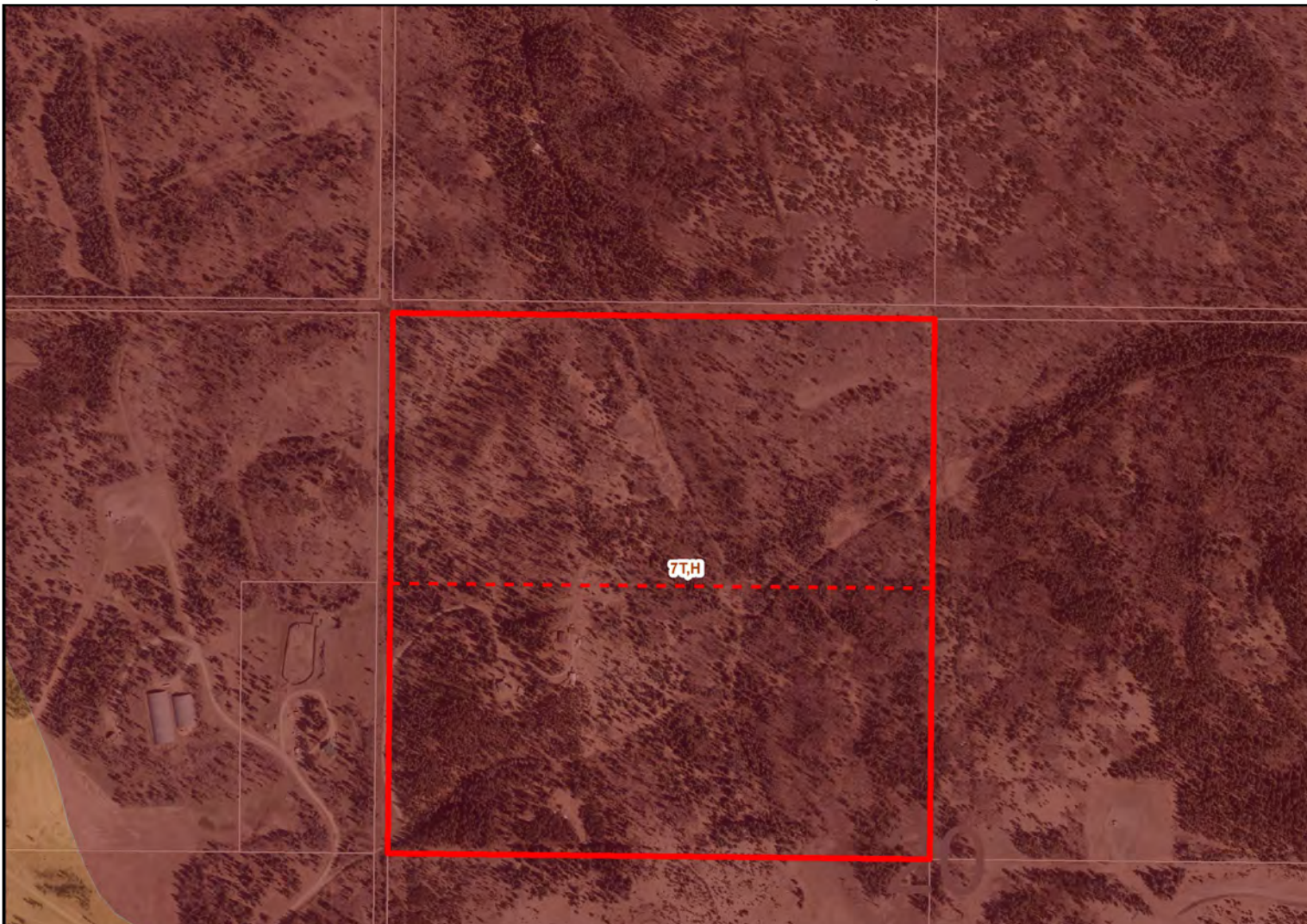
-  Subject Lands
-  Contour - 2 meters
-  Riparian Setbacks
-  Alberta Wetland Inventory
-  Surface Water

Division: 3
Roll: 07920001
File: PL20220177
Printed: Oct 12, 2022
Legal: A portion of NW-20-27-05-W05M

Soil Classifications

Subdivision Proposal

To create a \pm 32.37 hectare (\pm 80.00 acre) parcel (Lot 1) with a \pm 32.37 hectare (\pm 80.00 acre) remainder (Lot 2).



LAND CAPABILITY CLASSIFICATION LEGEND

CLI Class	Limitations	
1 - No significant limitation	B - brush/tree cover	N - high salinity
2 - Slight limitations	C - climate	P - excessive surface stoniness
3 - Moderate limitations	D - low permeability	R - shallowness to bedrock
4 - Severe limitations	E - erosion damage	S - high solidity
5 - Very severe limitations	F - poor fertility	T - adverse topography
6 - Production is not feasible	G - Steep slopes	U - prior earth moving
7 - No capability	H - temperature	V - high acid content
	I - flooding	W - excessive wetness/poor drainage
	J - field size/shape	X - deep organic deposit
	K - shallow profile development	Y - slowly permeable
	M - low moisture holding, adverse texture	Z - relatively impermeable

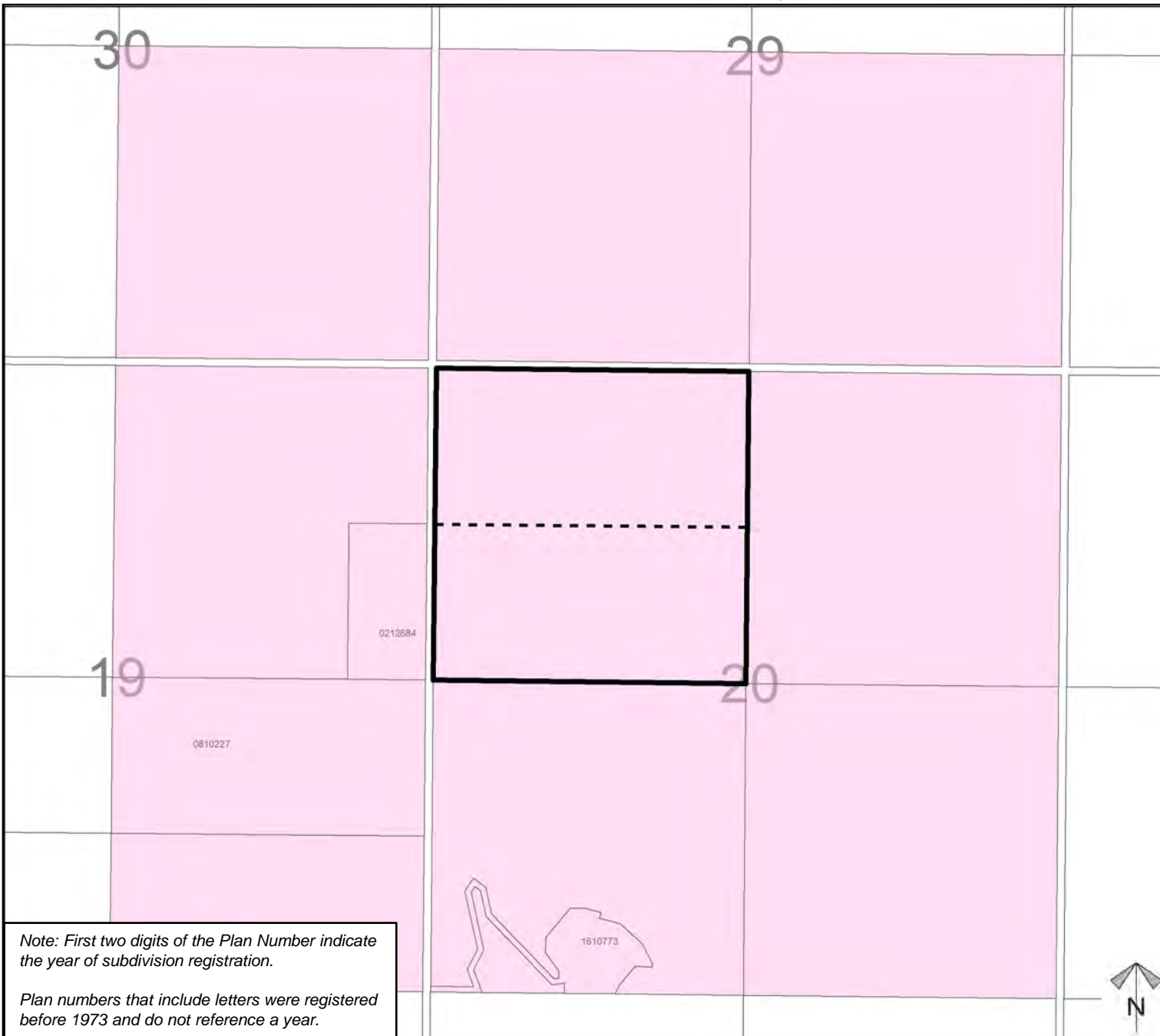


Division: 3
 Roll: 07920001
 File: PL20220177
 Printed: Oct 12, 2022
 Legal: A portion of NW-20-27-05-W05M

Landowner Circulation Area

Subdivision Proposal

To create a ± 32.37 hectare (± 80.00 acre) parcel (Lot 1) with a ± 32.37 hectare (± 80.00 acre) remainder (Lot 2).



Note: First two digits of the Plan Number indicate the year of subdivision registration.

Plan numbers that include letters were registered before 1973 and do not reference a year.

Legend

Support



Not Support



Division: 3
Roll: 07920001
File: PL20220177
Printed: Oct 12, 2022
Legal: A portion of NW-20-27-05-W05M