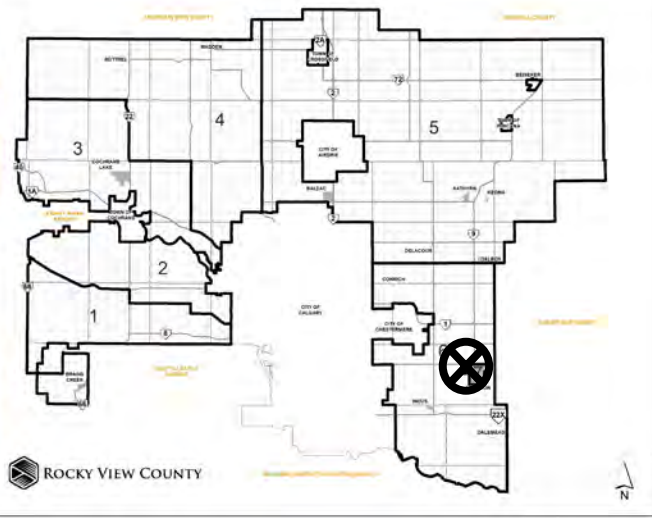




## Location & Context

### Road Closure Proposal

To close a portion of undeveloped road created by subdivision plan 2319 L for the purpose of consolidation with Block 3, Plan 2319 L within SW-23-23-27-W04M.



Division: 7  
Roll: 03223012  
File: PL20210126  
Printed: July 07, 2021  
Legal: Lot: 1 - 16 Block: 3  
Plan: 2319 L within SW-23-23-27-W04M



## Development Proposal

### Road Closure Proposal

To close a portion of undeveloped road created by subdivision plan 2319 L for the purpose of consolidation with Block 3, Plan 2319 L within SW-23-23-27-W04M.



Division: 7  
Roll: 03223012  
File: PL20210126  
Printed: July 07, 2021  
Legal: Lot: 1 - 16 Block: 3  
Plan: 2319 L within SW-23-  
23-27-W04M



## Environmental

### Road Closure Proposal

To close a portion of undeveloped road created by subdivision plan 2319 L for the purpose of consolidation with Block 3, Plan 2319 L within SW-23-23-27-W04M.



-  Subject Lands
-  Contour - 2 meters
-  Riparian Setbacks
-  Alberta Wetland Inventory
-  Surface Water

Division: 7  
Roll: 03223012  
File: PL20210126  
Printed: July 07, 2021  
Legal: Lot: 1 - 16 Block: 3  
Plan: 2319 L within SW-23-23-27-W04M



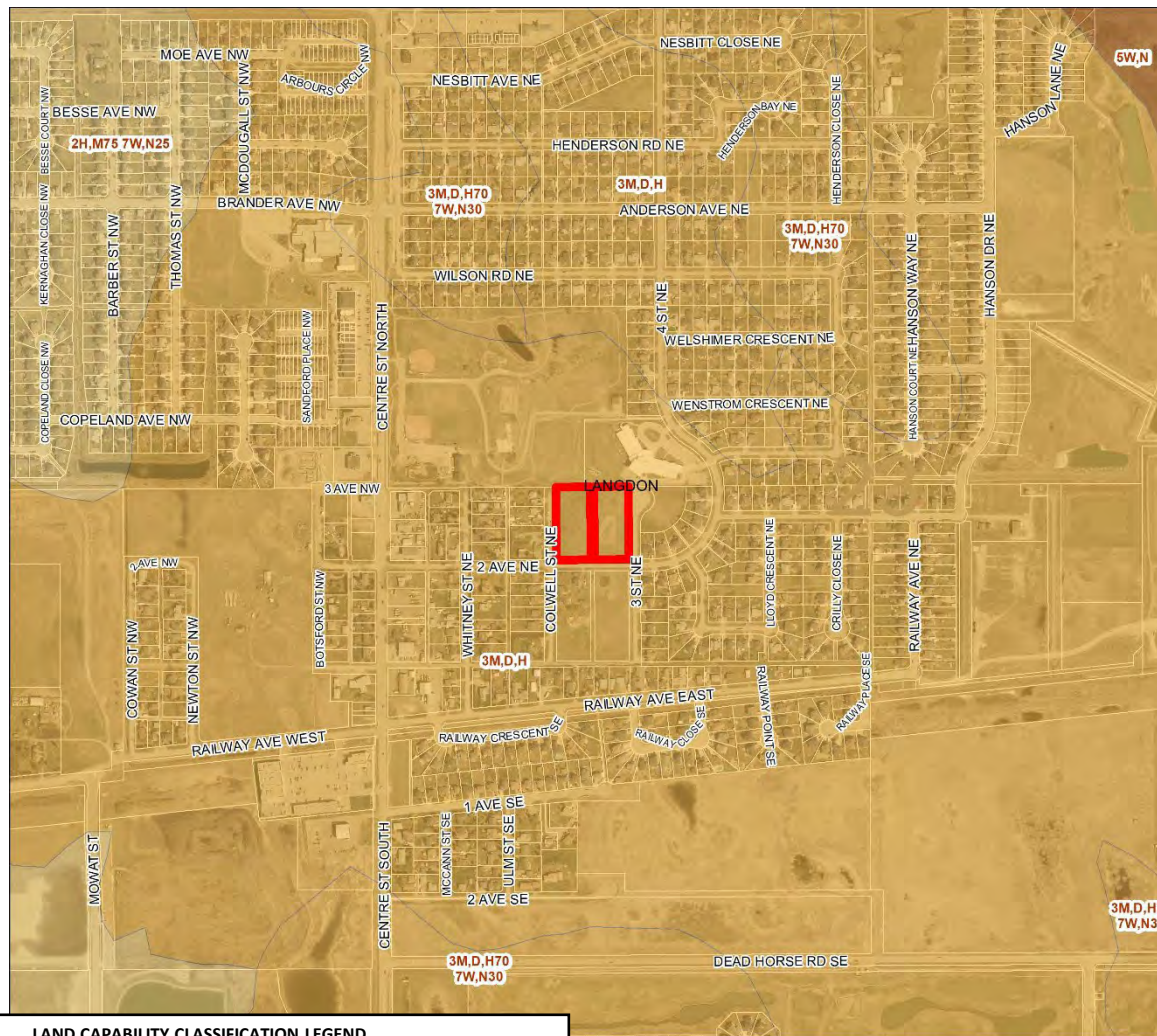




## Soil Classifications

### Road Closure Proposal

To close a portion of undeveloped road created by subdivision plan 2319 L for the purpose of consolidation with Block 3, Plan 2319 L within SW-23-23-27-W04M.



#### LAND CAPABILITY CLASSIFICATION LEGEND

CLI Class	Limitations	
1 - No significant limitation	B - brush/tree cover	N - high salinity
2 - Slight limitations	C - climate	P - excessive surface stoniness
3 - Moderate limitations	D - low permeability	R - shallowness to bedrock
4 - Severe limitations	E - erosion damage	S - high solidity
5 - Very severe limitations	F - poor fertility	T - adverse topography
6 - Production is not feasible	G - Steep slopes	U - prior earth moving
7 - No capability	H - temperature	V - high acid content
	I - flooding	W - excessive wetness/poor drainage
	J - field size/shape	X - deep organic deposit
	K - shallow profile development	Y - slowly permeable
	M - low moisture holding, adverse texture	Z - relatively impermeable



Division: 7  
Roll: 03223012  
File: PL20210126  
Printed: July 07, 2021  
Legal: Lot: 1 - 16 Block: 3  
Plan: 2319 L within SW-23-23-27-W04M



## Landowner Circulation Area

### Road Closure Proposal

To close a portion of undeveloped road created by subdivision plan 2319 L for the purpose of consolidation with Block 3, Plan 2319 L within SW-23-23-27-W04M.



### Legend

Support



Not Support



Note: First two digits of the Plan Number indicate the year of subdivision registration.



1 letter of support (no address)

Plan numbers that include letters were registered before 1973 and do not reference a year.



Division: 7  
Roll: 03223012  
File: PL20210126  
Printed: July 07, 2021  
Legal: Lot: 1 - 16 Block: 3  
Plan: 2319 L within SW-23-23-27-W04M