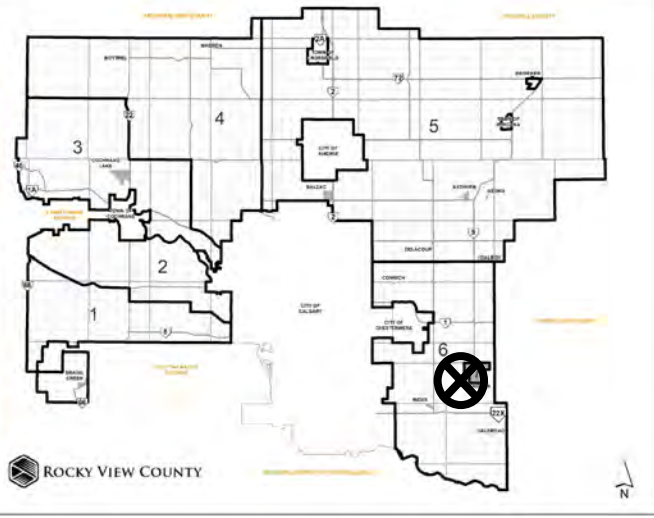


### Location & Context

#### Redesignation Proposal

To redesignate a ± 0.37 hectare (± 0.91 acre) portion of the SE-16-23-27-W04M from Agricultural, General District (A-GEN) to Direct Control District (DC) to allow for continued operation of a Data Processing Centre.



*Division: 6  
Roll: 03216001  
File: PL20220135  
Printed: Aug 4, 2022  
Legal: A portion of SE-16-23-27-W04M*

## Development Proposal

### Redesignation Proposal

To redesignate a  $\pm 0.37$  hectare ( $\pm 0.91$  acre) portion of the SE-16-23-27-W04M from Agricultural, General District (A-GEN) to Direct Control District (DC) to allow for continued operation of a Data Processing Centre.



A-GEN → DC  
 $\pm 0.37$  hectares  
( $\pm 0.91$  acres)

VALE VIEW RD

TWP RD 232



Division: 6  
Roll: 03216001  
File: PL20220135  
Printed: Aug 4, 2022  
Legal: A portion of SE-16-23-27-W04M

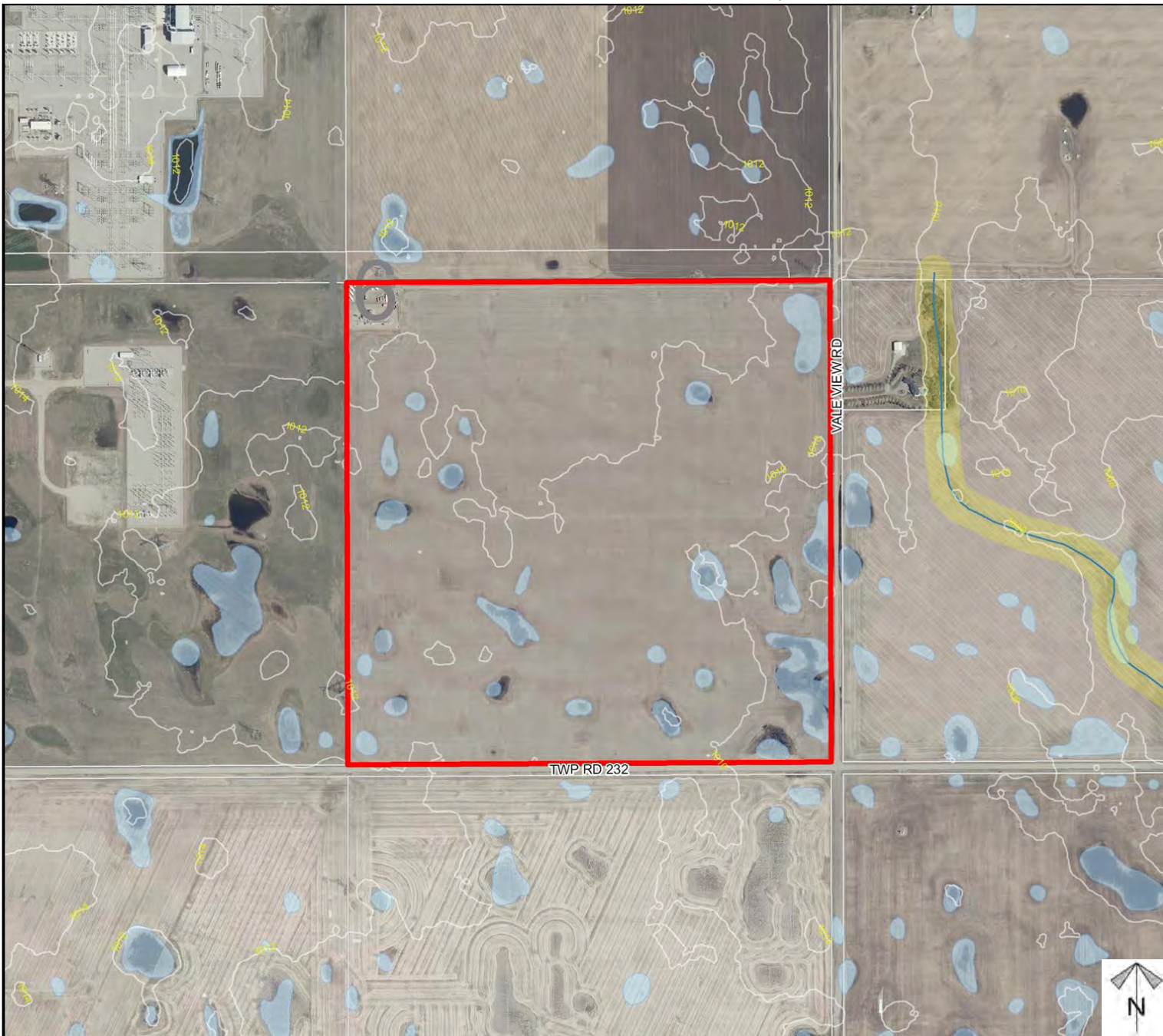
## Environmental

### Redesignation Proposal

To redesignate a  $\pm 0.37$  hectare ( $\pm 0.91$  acre) portion of the SE-16-23-27-W04M from Agricultural, General District (A-GEN) to Direct Control District (DC) to allow for continued operation of a Data Processing Centre.

-  Subject Lands
-  Contour - 2 meters
-  Riparian Setbacks
-  Alberta Wetland Inventory
-  Surface Water

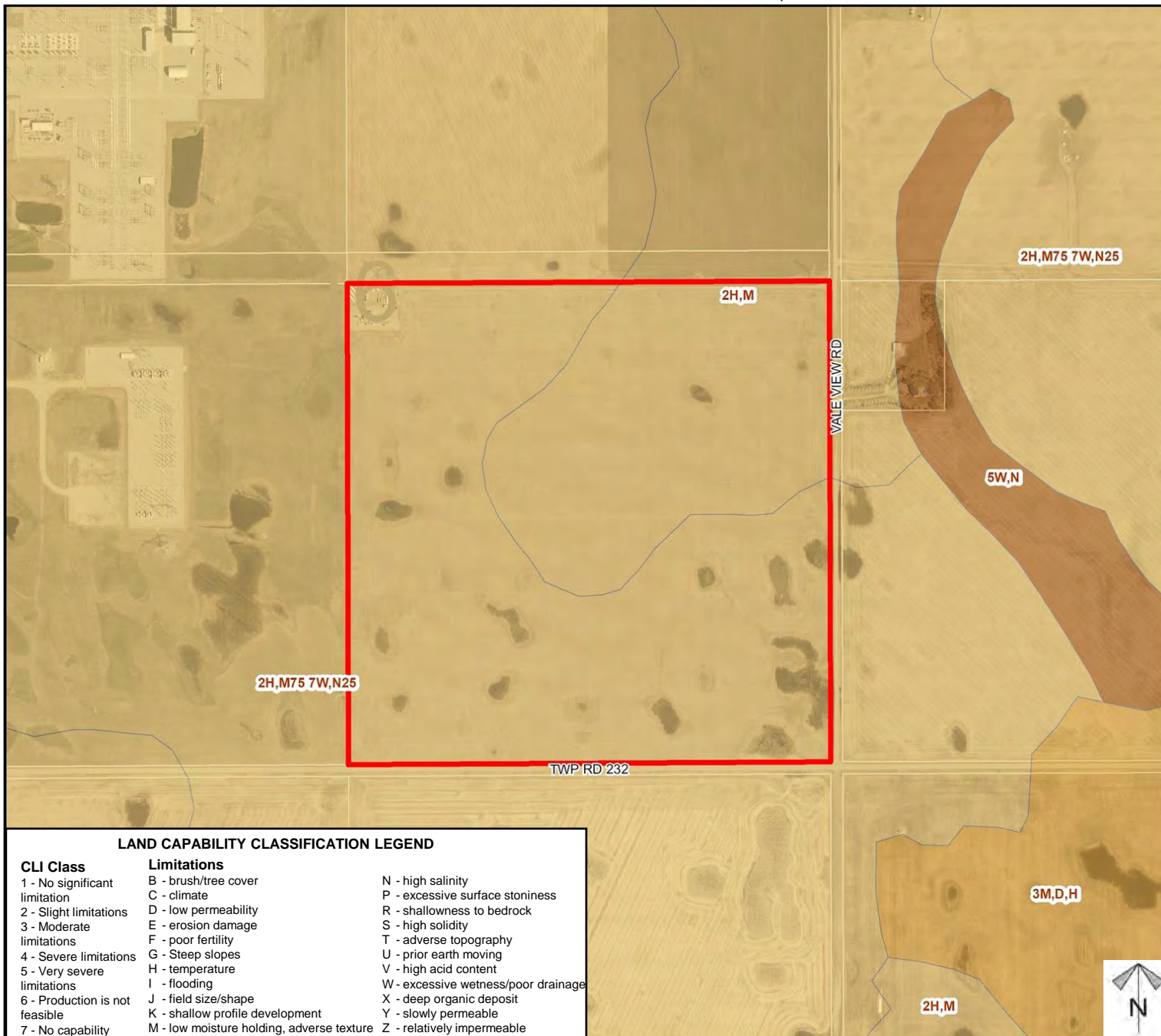
Division: 6  
 Roll: 03216001  
 File: PL20220135  
 Printed: Aug 4, 2022  
 Legal: A portion of SE-16-23-27-W04M



# Soil Classifications

## Redesignation Proposal

To redesignate a ± 0.37 hectare (± 0.91 acre) portion of the SE-16-23-27-W04M from Agricultural, General District (A-GEN) to Direct Control District (DC) to allow for continued operation of a Data Processing Centre.



### LAND CAPABILITY CLASSIFICATION LEGEND

CLI Class	Limitations	
1 - No significant limitation	B - brush/tree cover	N - high salinity
2 - Slight limitations	C - climate	P - excessive surface stoniness
3 - Moderate limitations	D - low permeability	R - shallowness to bedrock
4 - Severe limitations	E - erosion damage	S - high solidity
5 - Very severe limitations	F - poor fertility	T - adverse topography
6 - Production is not feasible	G - Steep slopes	U - prior earth moving
7 - No capability	H - temperature	V - high acid content
	I - flooding	W - excessive wetness/poor drainage
	J - field size/shape	X - deep organic deposit
	K - shallow profile development	Y - slowly permeable
	M - low moisture holding, adverse texture	Z - relatively impermeable



Division: 6  
Roll: 03216001  
File: PL20220135  
Printed: Aug 4, 2022  
Legal: A portion of SE-16-23-27-W04M

# Landowner Circulation Area

## Redesignation Proposal

To redesignate a ± 0.37 hectare (± 0.91 acre) portion of the SE-16-23-27-W04M from Agricultural, General District (A-GEN) to Direct Control District (DC) to allow for continued operation of a Data Processing Centre.

### Legend

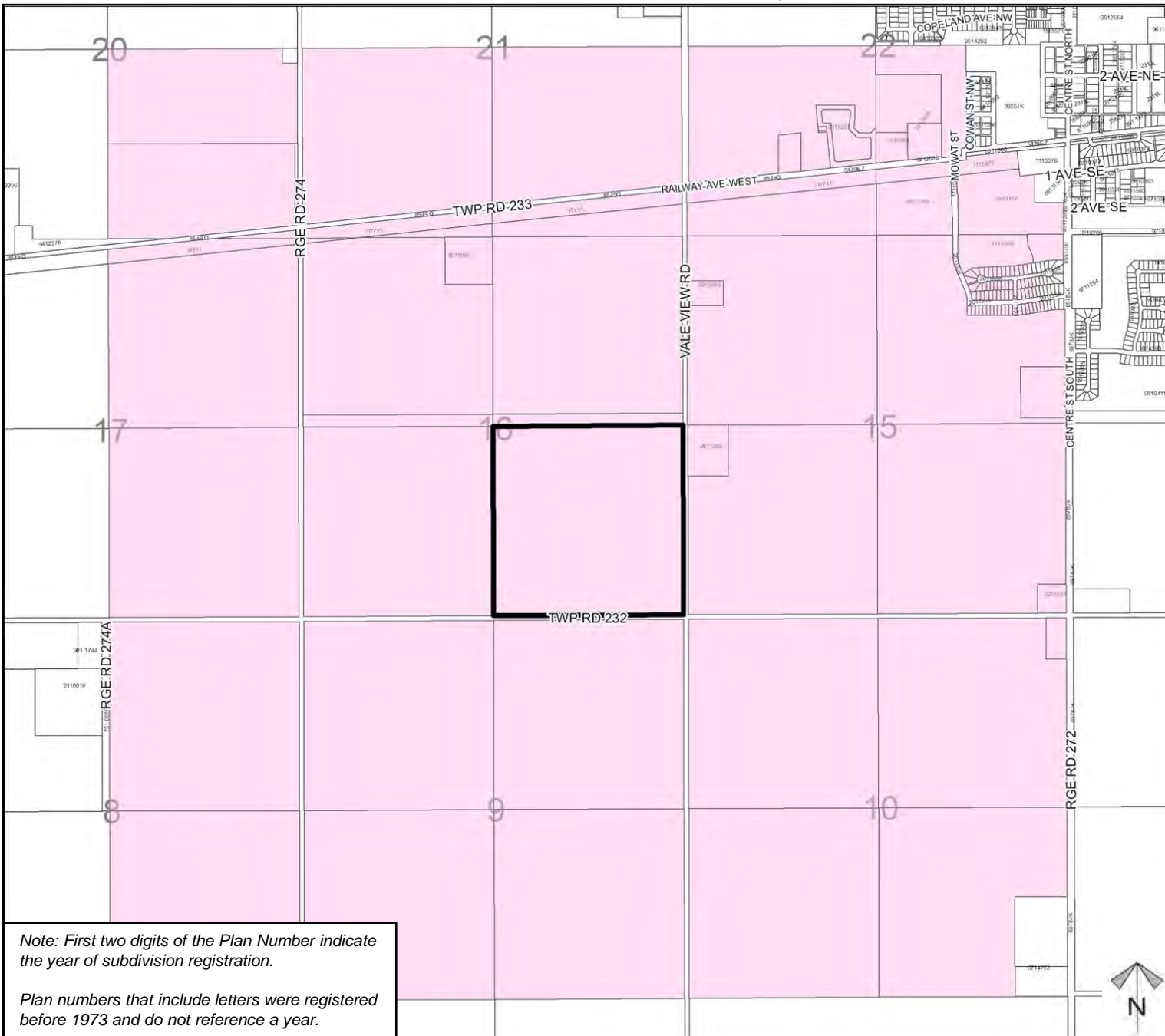
Support



Opposition



Division: 6  
Roll: 03216001  
File: PL20220135  
Printed: Aug 4, 2022  
Legal: A portion of SE-16-23-27-W04M



Note: First two digits of the Plan Number indicate the year of subdivision registration.  
  
Plan numbers that include letters were registered before 1973 and do not reference a year.