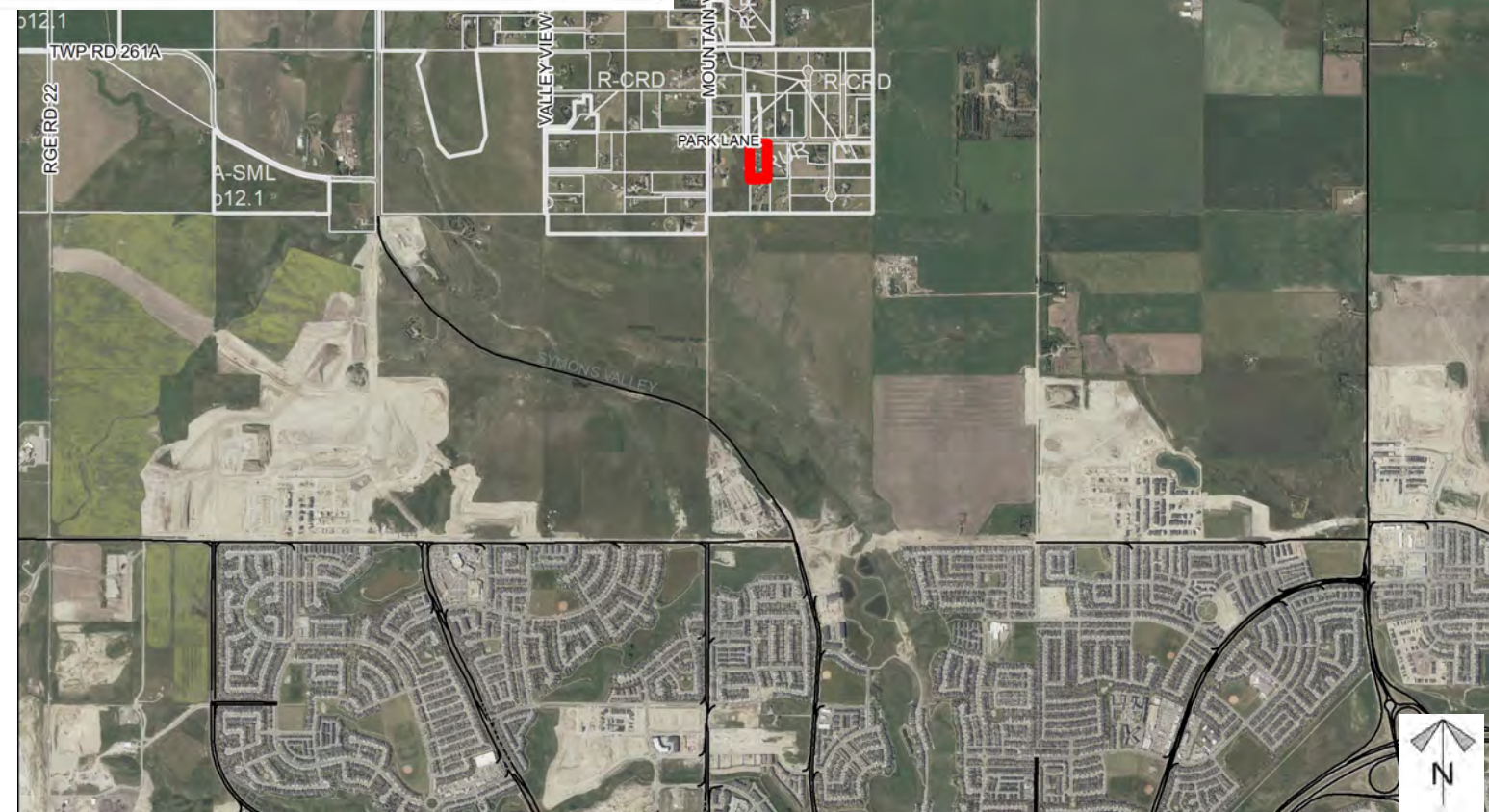
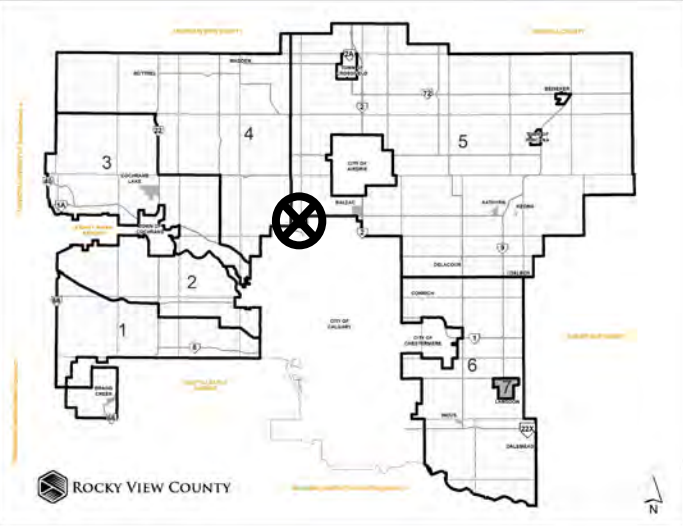


Location & Context

Redesignation and MSDP Proposal

To redesignate the subject lands from Residential, Rural District (R-RUR) to Direct Control District (DC) to facilitate future religious assembly and community uses.

Division: 5
Roll: 06507009
File: PL20200068
Printed: Sept 21, 2023
Legal: A portion of SW-7-26-1-W5M



PARK LANE



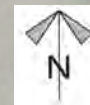
R-RUR → DC

Development Proposal

Redesignation and MSDP Proposal

To redesignate the subject lands from Residential, Rural District (R-RUR) to Direct Control District (DC) to facilitate future religious assembly and community uses.

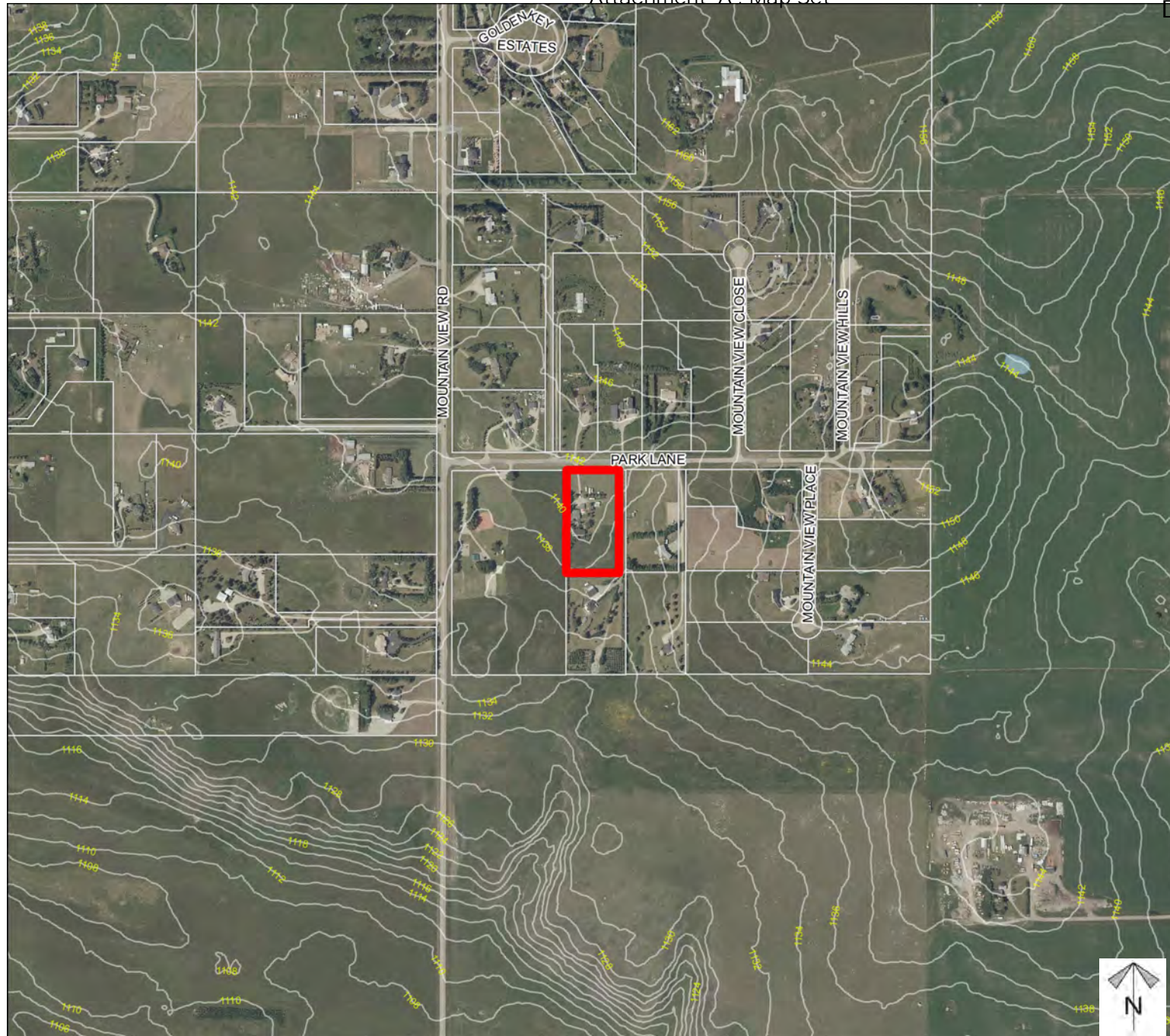
Division: 5
Roll: 06507009
File: PL20200068
Printed: Sept 21, 2023
Legal: A portion of SW-7-26-1-W5M



Environmental

Redesignation and MSDP Proposal

To redesignate the subject lands from Residential, Rural District (R-RUR) to Direct Control District (DC) to facilitate future religious assembly and community uses.



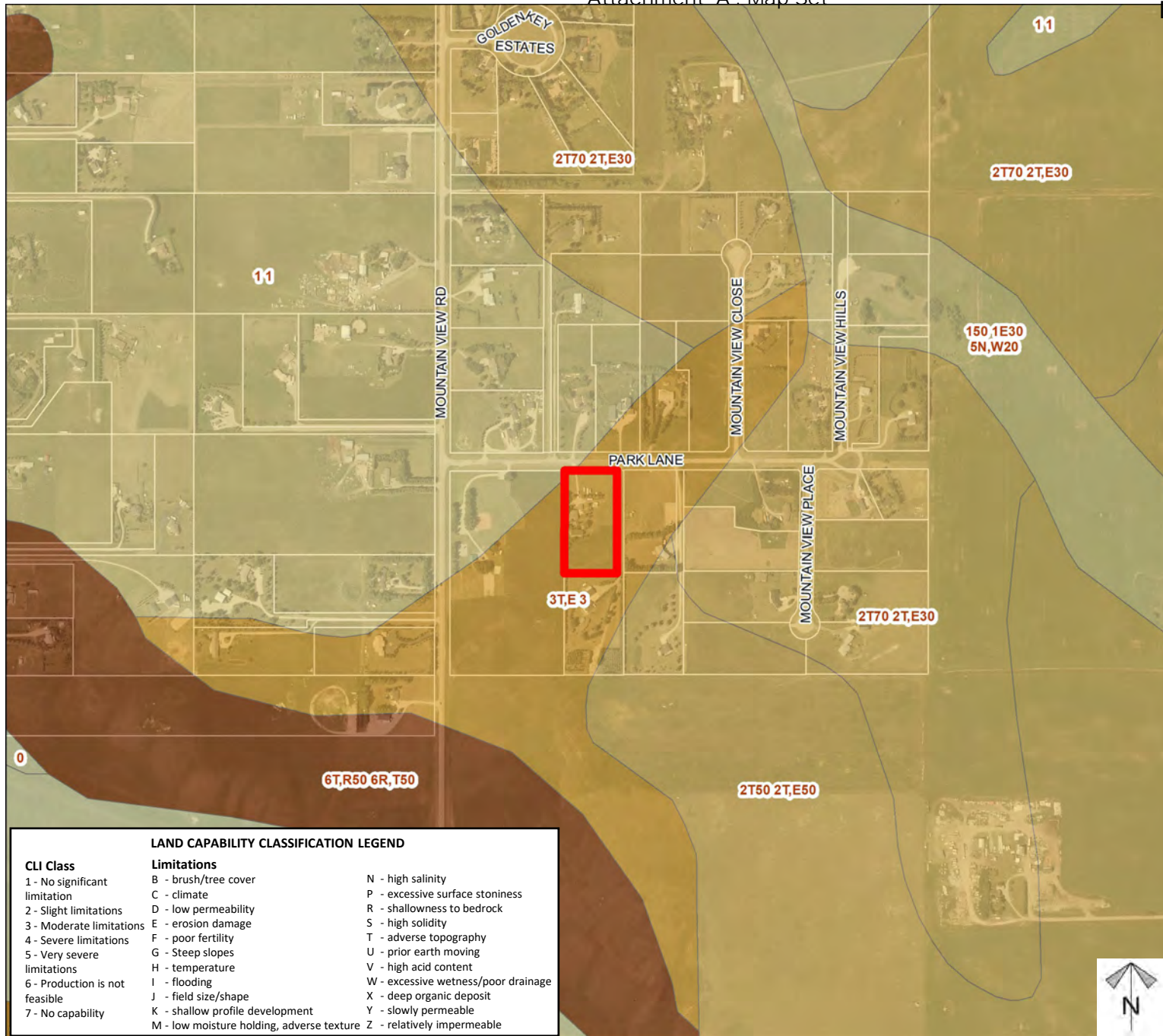
-  Subject Lands
-  Contour - 2 meters
-  Riparian Setbacks
-  Alberta Wetland Inventory
-  Surface Water

Division: 5
 Roll: 06507009
 File: PL20200068
 Printed: Sept 21, 2023
 Legal: A portion of SW-7-26-1-W5M

Soil Classifications

Redesignation and MSDP Proposal

To redesignate the subject lands from Residential, Rural District (R-RUR) to Direct Control District (DC) to facilitate future religious assembly and community uses.



LAND CAPABILITY CLASSIFICATION LEGEND	
CLI Class	Limitations
1 - No significant limitation	B - brush/tree cover
2 - Slight limitations	C - climate
3 - Moderate limitations	D - low permeability
4 - Severe limitations	E - erosion damage
5 - Very severe limitations	F - poor fertility
6 - Production is not feasible	G - Steep slopes
7 - No capability	H - temperature
	I - flooding
	J - field size/shape
	K - shallow profile development
	M - low moisture holding, adverse texture
	N - high salinity
	P - excessive surface stoniness
	R - shallowness to bedrock
	S - high solidity
	T - adverse topography
	U - prior earth moving
	V - high acid content
	W - excessive wetness/poor drainage
	X - deep organic deposit
	Y - slowly permeable
	Z - relatively impermeable



Division: 5
 Roll: 06507009
 File: PL20200068
 Printed: Sept 21, 2023
 Legal: A portion of SW-7-26-1-W5M

Landowner Circulation Area

Redesignation and MSDP Proposal

To redesignate the subject lands from Residential, Rural District (R-RUR) to Direct Control District (DC) to facilitate future religious assembly and community uses.



Legend

- ☆ Support
- ⊘ Not Support
- ☆/ Prior owner oppose
- ⊘/ Current owner support

Note: First two digits of the Plan Number indicate the year of subdivision registration.

Plan numbers that include letters were registered before 1973 and do not reference a year.

- ☆ 21 - Support (land owner outside of circulation area)
- ☆/ 8 - Support (external elected official)



Division: 5
 Roll: 06507009
 File: PL20200068
 Printed: Sept 21, 2023
 Legal: A portion of SW-7-26-1-W5M