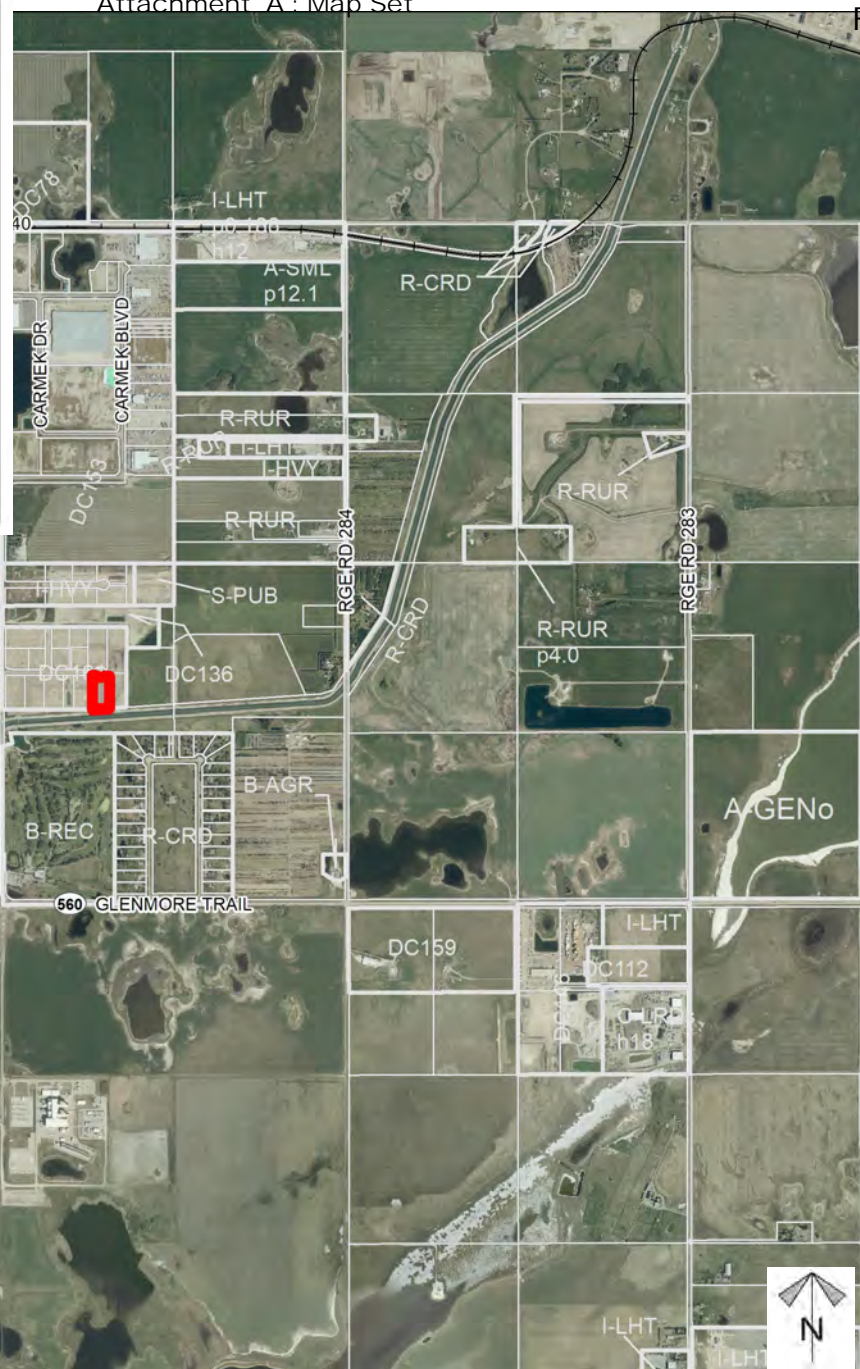
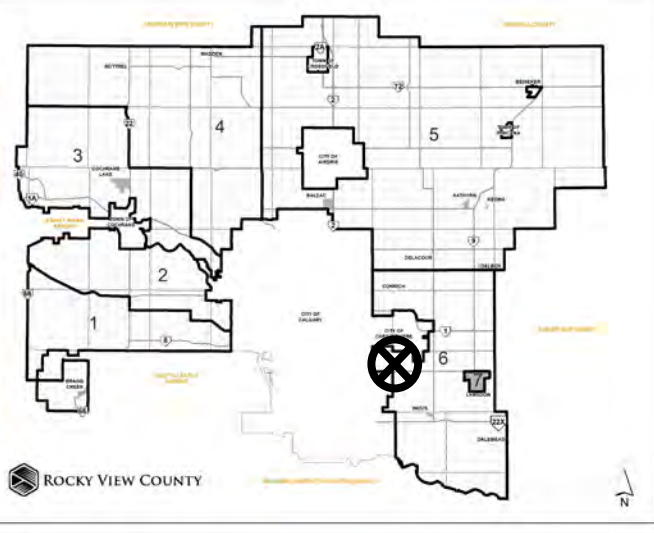


# Location & Context Development Proposal

Outside Storage, for semi-trucks, trailers, and equipment, single-lot regrading and the placement of clean fill for site preparation (Phase 1)



Division: 6  
Roll: 03329055  
File: PRDP20232206  
Printed: Nov 22, 2023  
Legal: A portion of NW-29-23-28-W4M

HEATHERGLEN PL

**Development  
Proposal**  
Development Proposal

Outside Storage, for semi-trucks, trailers, and equipment, single-lot regrading and the placement of clean fill for site preparation (Phase 1)

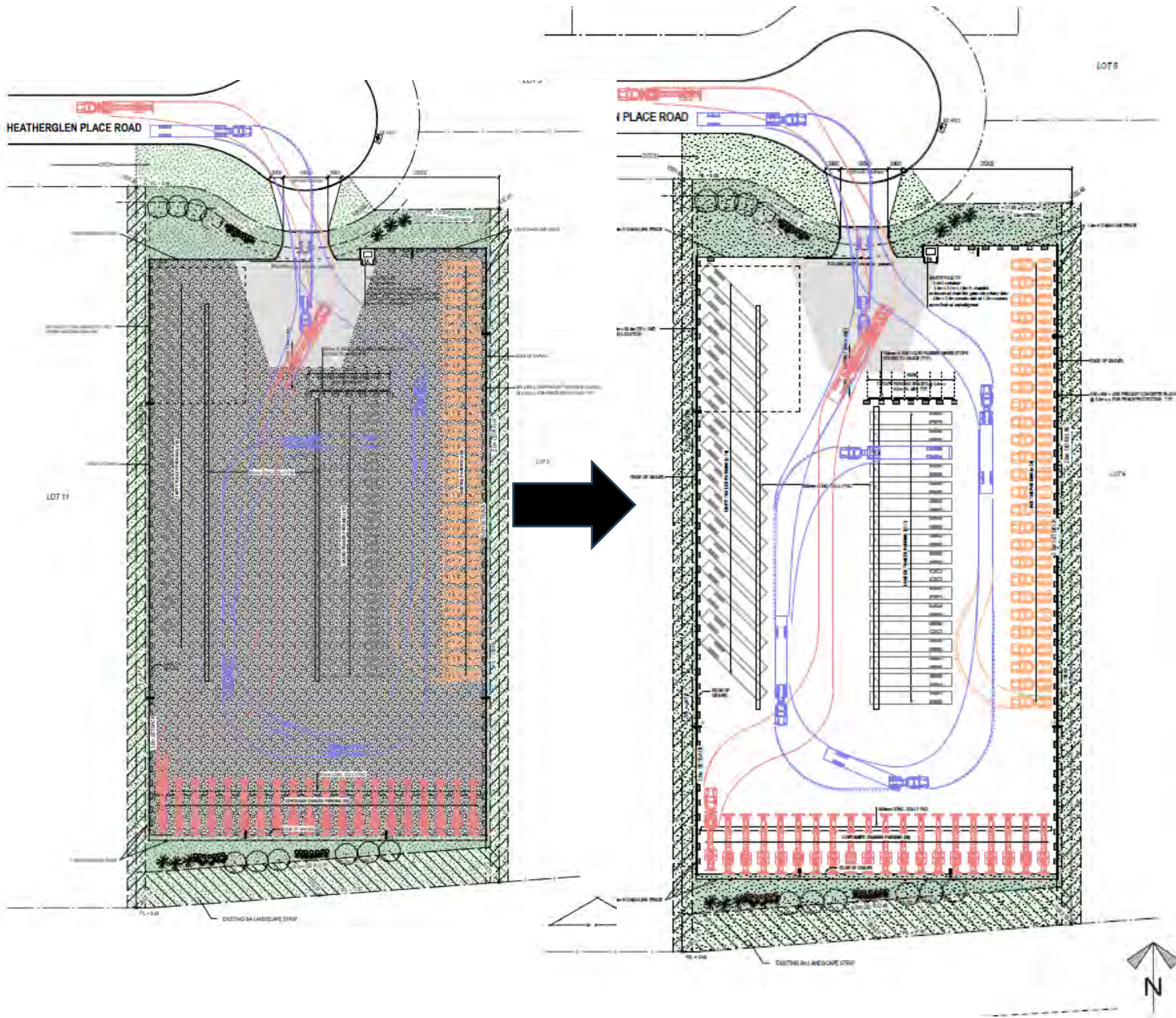


Division: 6  
Roll: 03329055  
File: PRDP20232206  
Printed: Nov 22, 2023  
Legal: A portion of NW-29-23-28-W4M

# Development Proposal

## Development Proposal

Outside Storage, for semi-trucks, trailers, and equipment, single-lot regrading and the placement of clean fill for site preparation (Phase 1)



Division: 6  
Roll: 03329055  
File: PRDP20232206  
Printed: Nov 22, 2023  
Legal: A portion of NW-29-23-28-W4M

# Environmental

## Development Proposal

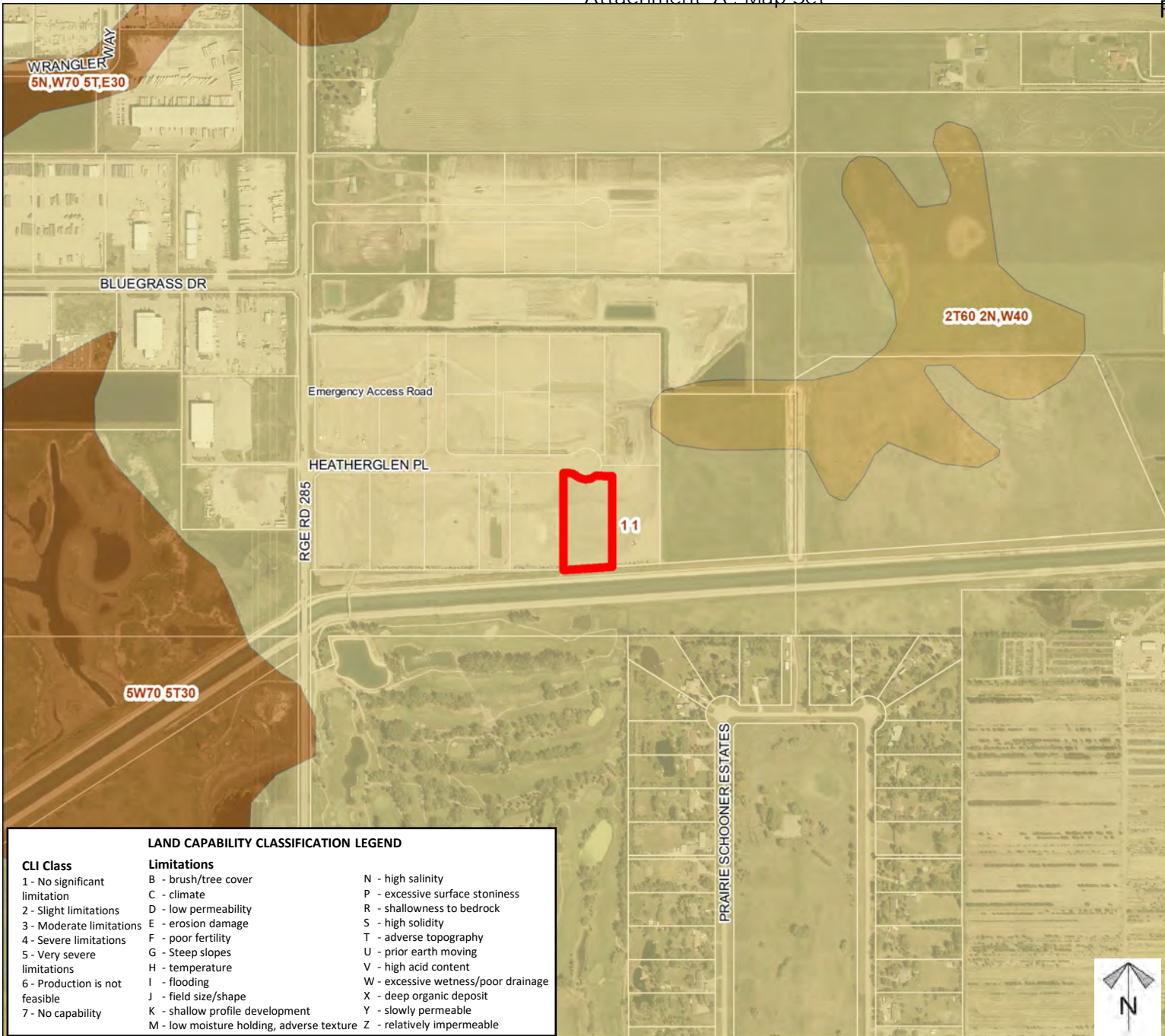
Outside Storage, for semi-trucks, trailers, and equipment, single-lot regrading and the placement of clean fill for site preparation (Phase 1)



-  Subject Lands
-  Contour - 2 meters
-  Riparian Setbacks
-  Alberta Wetland Inventory
-  Surface Water

Division: 6  
 Roll: 03329055  
 File: PRDP20232206  
 Printed: Nov 22, 2023  
 Legal: A portion of NW-29-23-28-W4M





## Soil Classifications Development Proposal

Outside Storage, for semi-trucks, trailers, and equipment, single-lot regrading and the placement of clean fill for site preparation (Phase 1)

### LAND CAPABILITY CLASSIFICATION LEGEND

CLI Class	Limitations	
1 - No significant limitation	B - brush/tree cover	N - high salinity
2 - Slight limitations	C - climate	P - excessive surface stoniness
3 - Moderate limitations	D - low permeability	R - shallowness to bedrock
4 - Severe limitations	E - erosion damage	S - high solidity
5 - Very severe limitations	F - poor fertility	T - adverse topography
6 - Production is not feasible	G - Steep slopes	U - prior earth moving
7 - No capability	H - temperature	V - high acid content
	I - flooding	W - excessive wetness/poor drainage
	J - field size/shape	X - deep organic deposit
	K - shallow profile development	Y - slowly permeable
	M - low moisture holding, adverse texture	Z - relatively impermeable

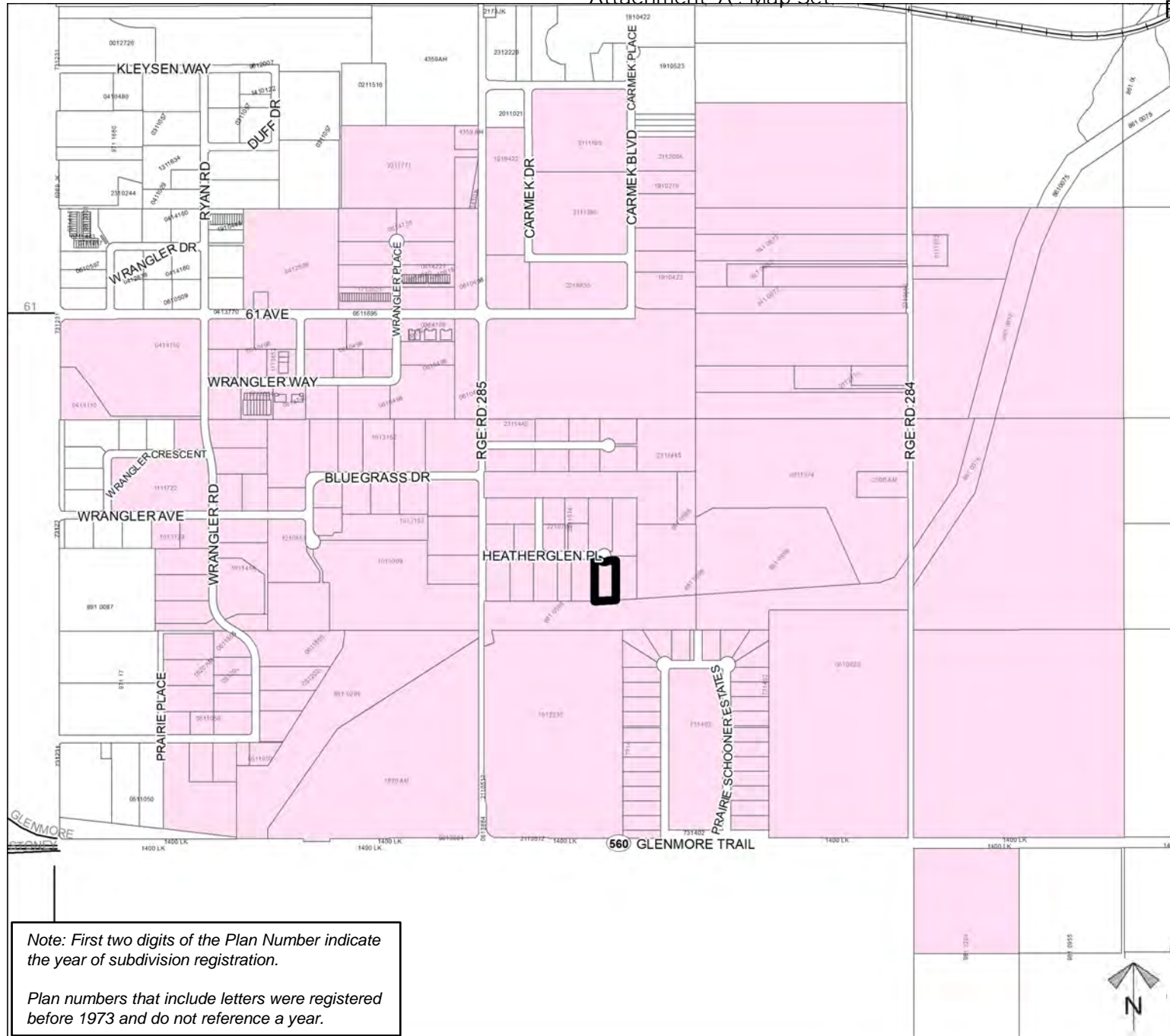
Division: 6  
 Roll: 03329055  
 File: PRDP20232206  
 Printed: Nov 22, 2023  
 Legal: A portion of NW-29-23-28-W4M



# Landowner Circulation Area

## Development Proposal

Outside Storage, for semi-trucks, trailers, and equipment, single-lot regrading and the placement of clean fill for site preparation (Phase 1)



### Legend

Support



Not Support



Note: First two digits of the Plan Number indicate the year of subdivision registration.

Plan numbers that include letters were registered before 1973 and do not reference a year.

Division: 6  
Roll: 03329055  
File: PRDP20232206  
Printed: Nov 22, 2023  
Legal: A portion of NW-29-23-28-W4M

