

Location & Context

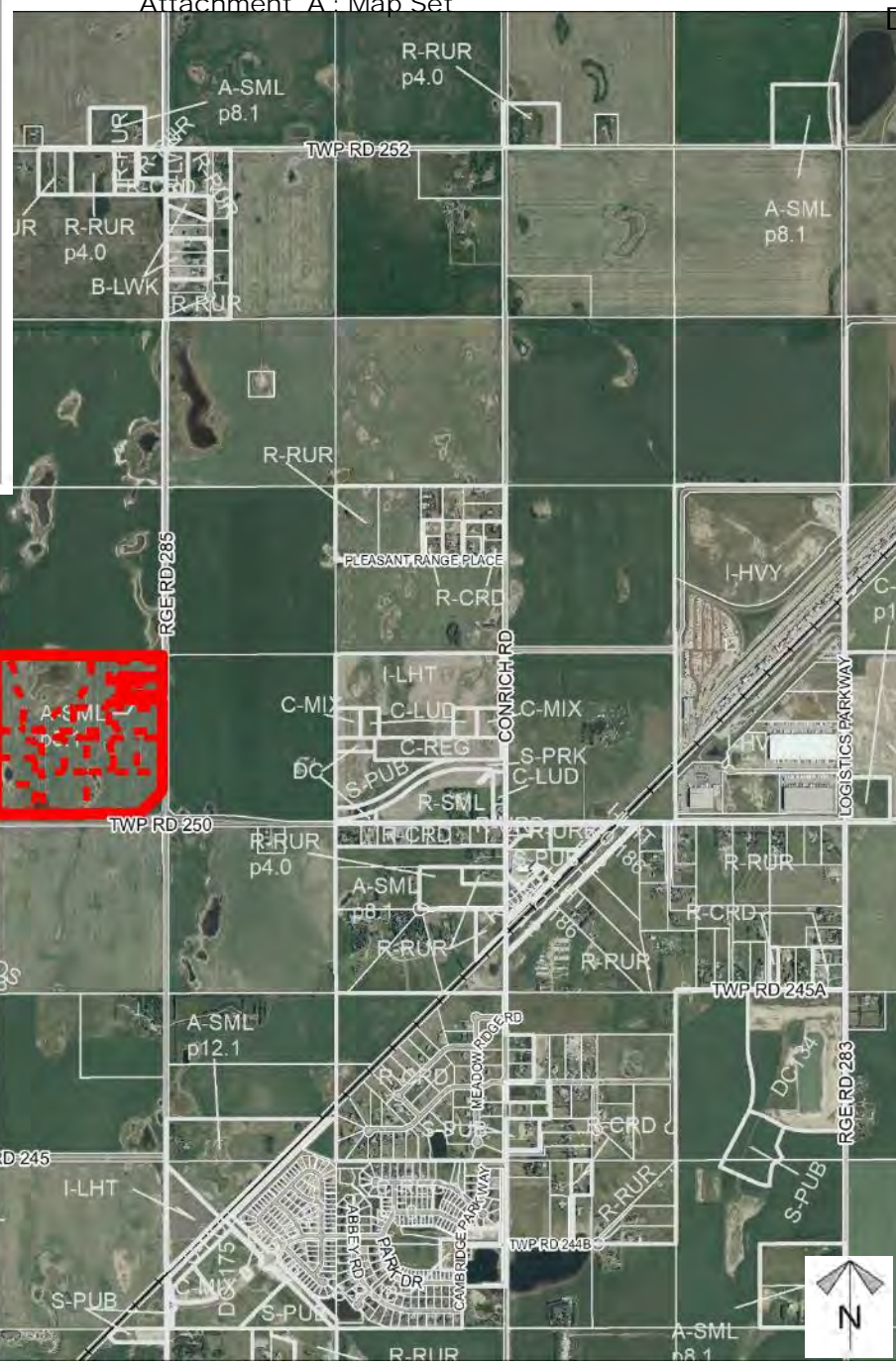
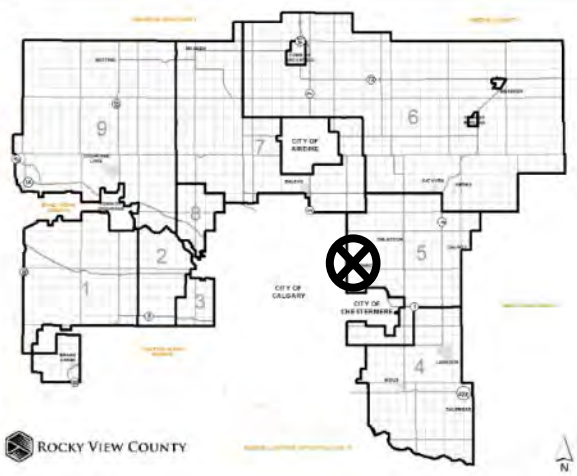
Conceptual Scheme Proposal

PL20200150 - To adopt the "Bridge Industrial Park Conceptual Scheme" that provides a policy framework to guide future industrial development within SE-06-25-28-W04M

Redesignation Proposal

PL20200151 - To redesignate the subject land from Agricultural, General District (A-GEN) and Agricultural, Small Parcel District (A-SMLp8.1) to Industrial, Light District (I-LHT), Special, Public Service District (S-PUB), Special, Natural Open Space District (S-NOS), Special, Parks and Recreation District (S-PRK), in order to facilitate the development of a full-served industrial park.

Division: 6
Roll: 05306005/6001
File: PL20200150 / PL20200151
Printed: November 14, 2023
Legal: A Portion of SE-06-25-28-W04M



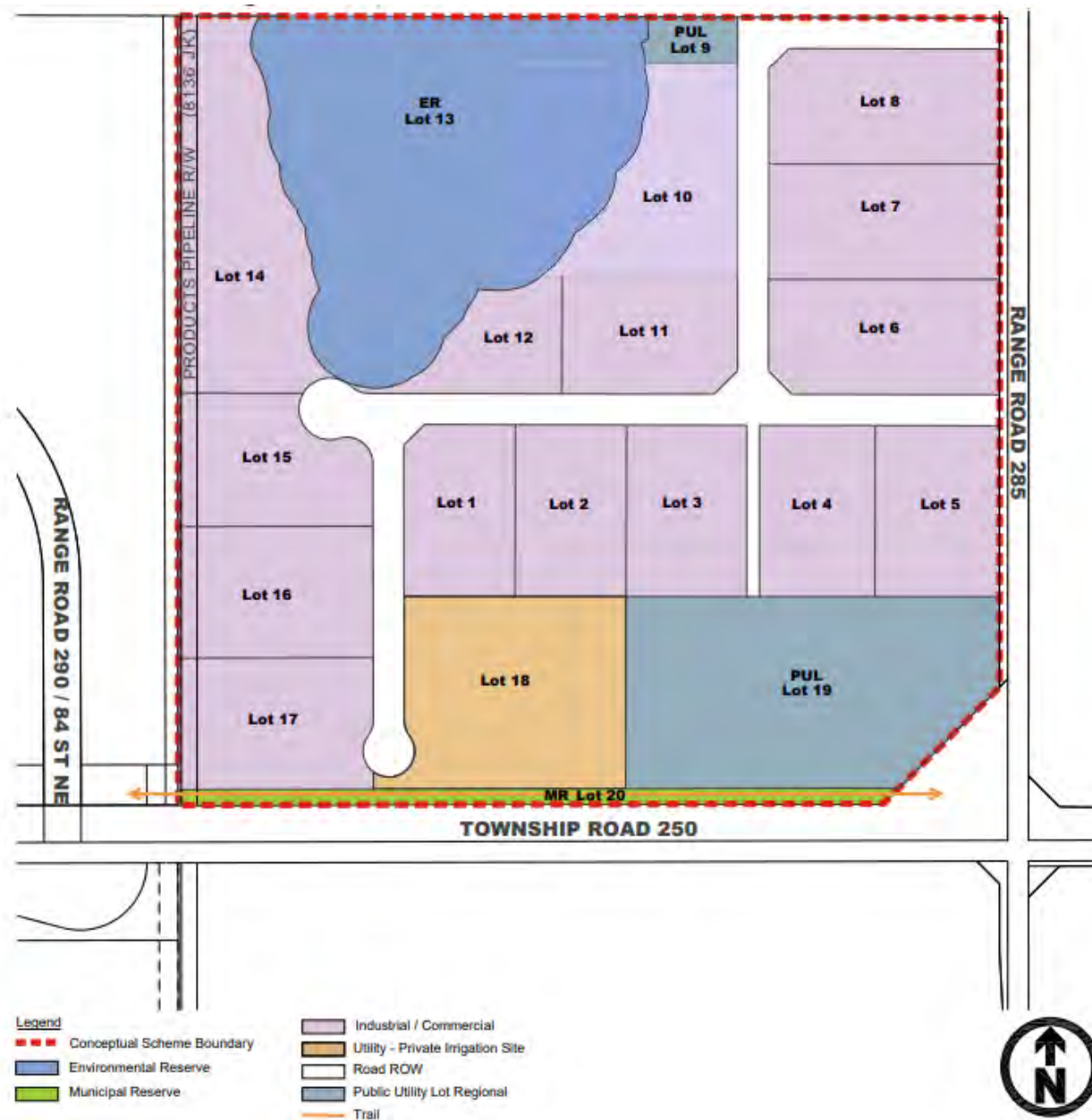
Location & Context

Conceptual Scheme Proposal

PL20200150 - To adopt the "Bridge Industrial Park Conceptual Scheme" that provides a policy framework to guide future industrial development within SE-06-25-28-W04M

Redesignation Proposal

PL20200151 - To redesignate the subject land from Agricultural, General District (A-GEN) and Agricultural, Small Parcel District (A-SMLp8.1) to Industrial, Light District (I-LHT), Special, Public Service District (S-PUB), Special, Natural Open Space District (S-NOS), Special, Parks and Recreation District (S-PRK), in order to facilitate the development of a full-served industrial park.



Development Proposal

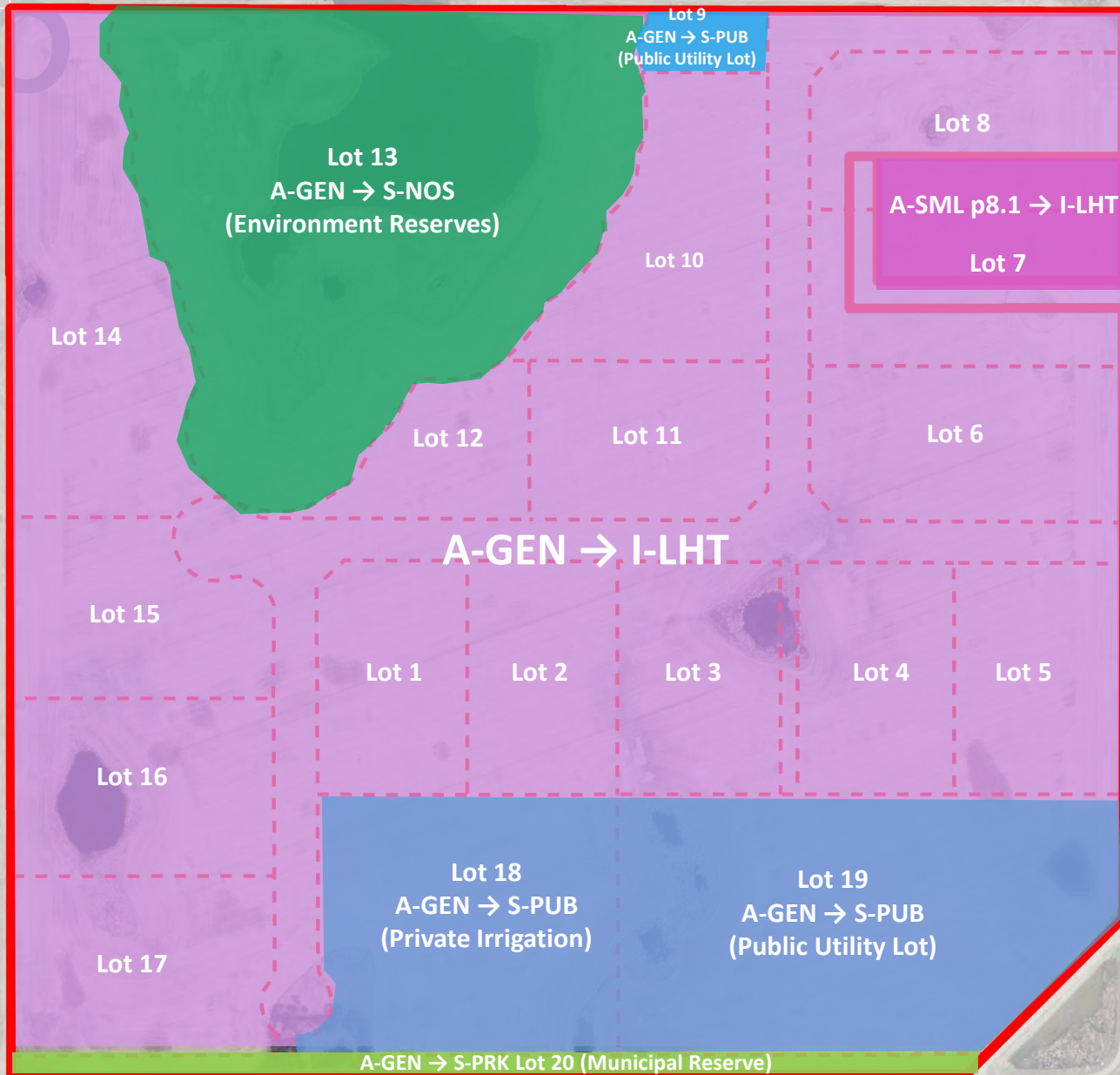
Conceptual Scheme Proposal

PL20200150 - To adopt the "Bridge Industrial Park Conceptual Scheme" that provides a policy framework to guide future industrial development within SE-06-25-28-W04M

Redesignation Proposal

PL20200151 - To redesignate the subject land from Agricultural, General District (A-GEN) and Agricultural, Small Parcel District (A-SMLp8.1) to Industrial, Light District (I-LHT), Special, Public Service District (S-PUB), Special, Natural Open Space District (S-NOS), Special, Parks and Recreation District (S-PRK), in order to facilitate the development of a full-serviced industrial park.

Division: 6
Roll: 05306005/6001
File: PL20200150 / PL20200151
Printed: November 14, 2023
Legal: A Portion of SE-06-25-28-W04M



Environmental

Conceptual Scheme Proposal

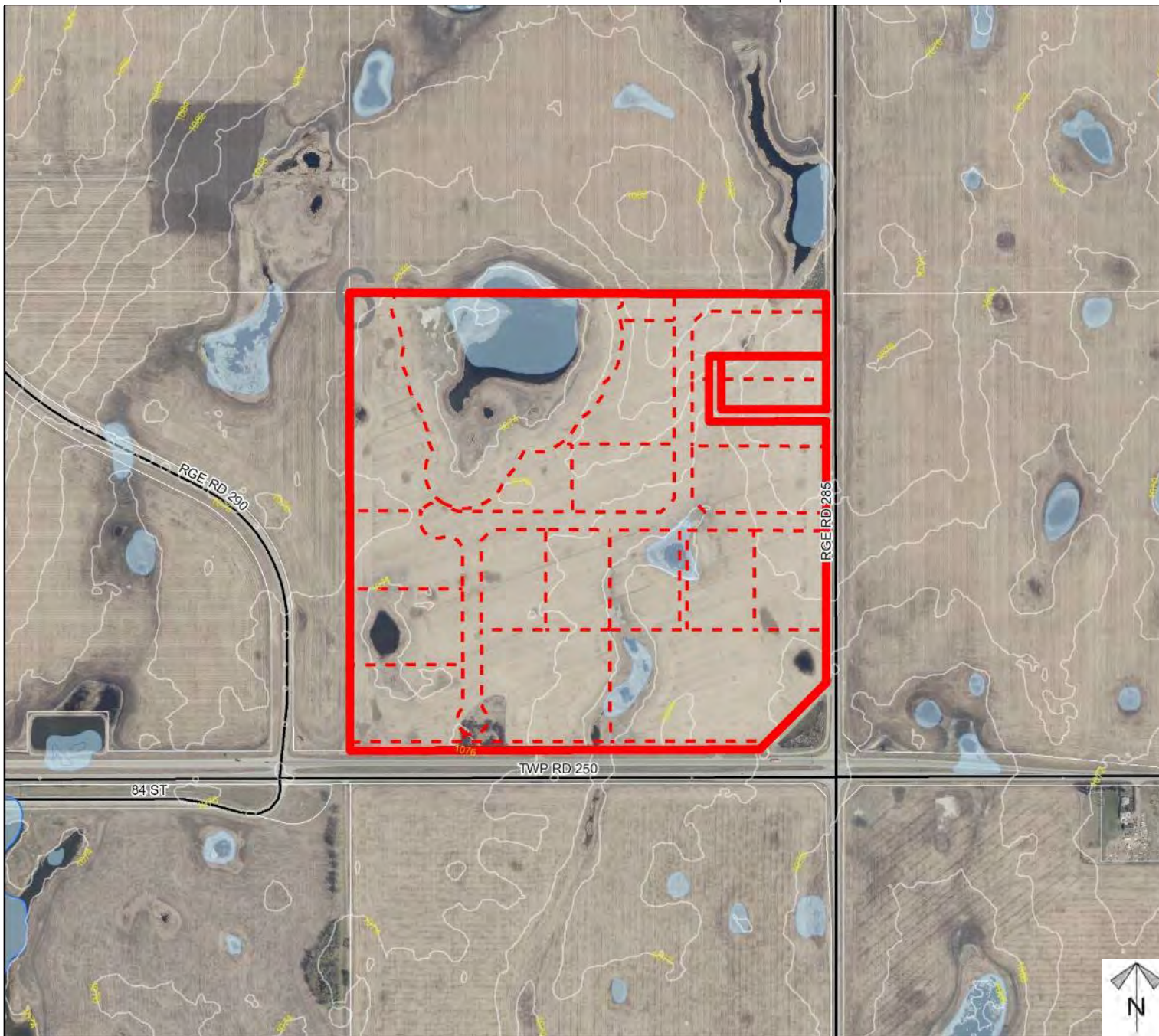
PL20200150 - To adopt the "Bridge Industrial Park Conceptual Scheme" that provides a policy framework to guide future industrial development within SE-06-25-28-W04M

Redesignation Proposal

PL20200151 - To redesignate the subject land from Agricultural, General District (A-GEN) and Agricultural, Small Parcel District (A-SMLp8.1) to Industrial, Light District (I-LHT), Special, Public Service District (S-PUB), Special, Natural Open Space District (S-NOS), Special, Parks and Recreation District (S-PRK), in order to facilitate the development of a full-serviced industrial park.

-  Subject Lands
-  Contour - 2 meters
-  Riparian Setbacks
-  Alberta Wetland Inventory
-  Surface Water

Division: 6
 Roll: 05306005/6001
 File: PL20200150 /
 PL20200151
 Printed: November 14, 2023
 Legal: A Portion of SE-06-
 25-28-W04M



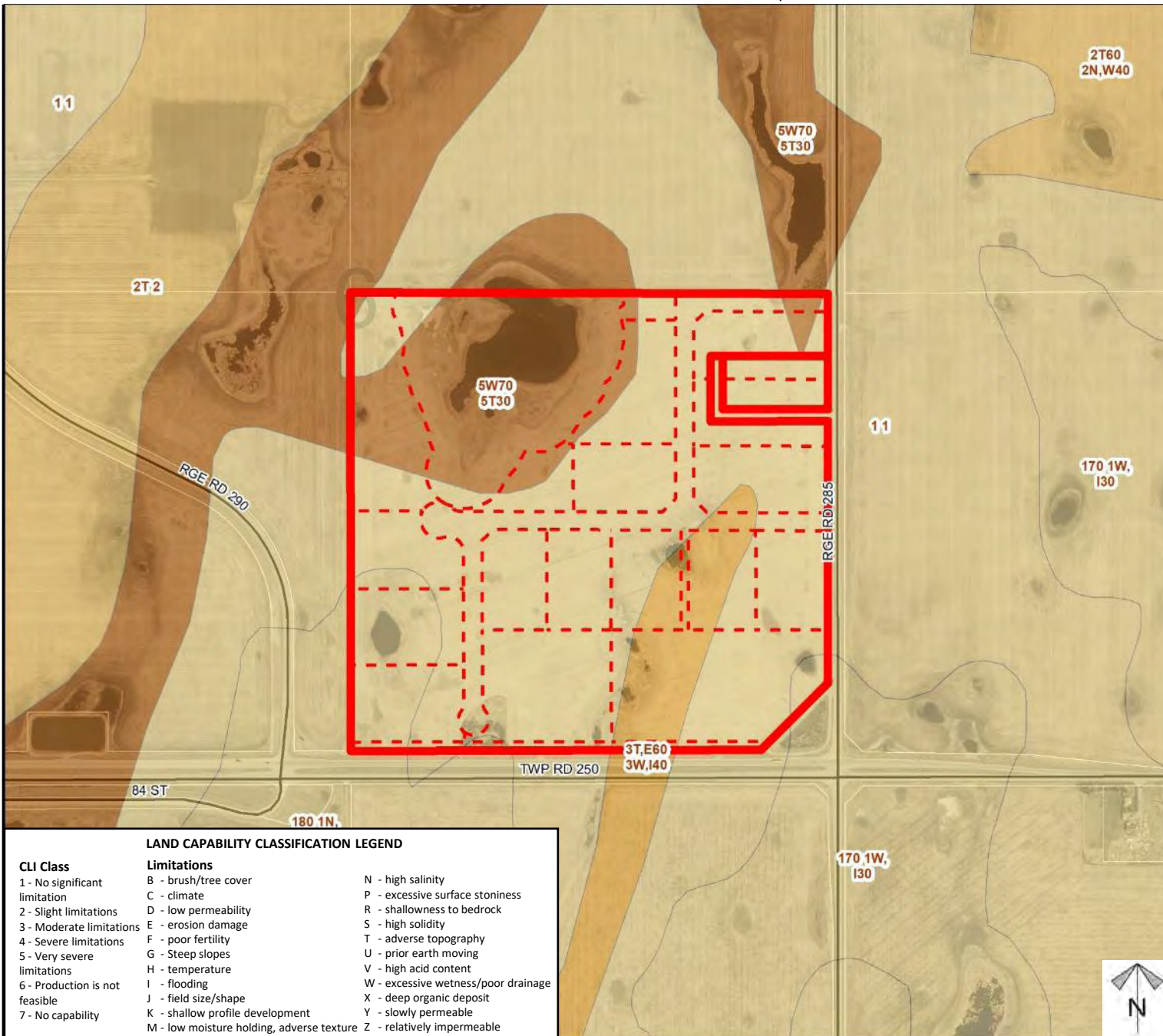
Soil Classifications

Conceptual Scheme Proposal

PL20200150 - To adopt the "Bridge Industrial Park Conceptual Scheme" that provides a policy framework to guide future industrial development within SE-06-25-28-W04M

Redesignation Proposal

PL20200151 - To redesignate the subject land from Agricultural, General District (A-GEN) and Agricultural, Small Parcel District (A-SMLp8.1) to Industrial, Light District (I-LHT), Special, Public Service District (S-PUB), Special, Natural Open Space District (S-NOS), Special, Parks and Recreation District (S-PRK), in order to facilitate the development of a full-serviced industrial park.



LAND CAPABILITY CLASSIFICATION LEGEND

CLI Class	Limitations
1 - No significant limitation	B - brush/tree cover
2 - Slight limitations	C - climate
3 - Moderate limitations	D - low permeability
4 - Severe limitations	E - erosion damage
5 - Very severe limitations	F - poor fertility
6 - Production is not feasible	G - Steep slopes
7 - No capability	H - temperature
	I - flooding
	J - field size/shape
	K - shallow profile development
	M - low moisture holding, adverse texture
	N - high salinity
	P - excessive surface stoniness
	R - shallowness to bedrock
	S - high solidity
	T - adverse topography
	U - prior earth moving
	V - high acid content
	W - excessive wetness/poor drainage
	X - deep organic deposit
	Y - slowly permeable
	Z - relatively impermeable



Division: 6
 Roll: 05306005/6001
 File: PL20200150 / PL20200151
 Printed: November 14, 2023
 Legal: A Portion of SE-06-25-28-W04M

Landowner Circulation Area



Conceptual Scheme Proposal

PL20200150 - To adopt the "Bridge Industrial Park Conceptual Scheme" that provides a policy framework to guide future industrial development within SE-06-25-28-W04M

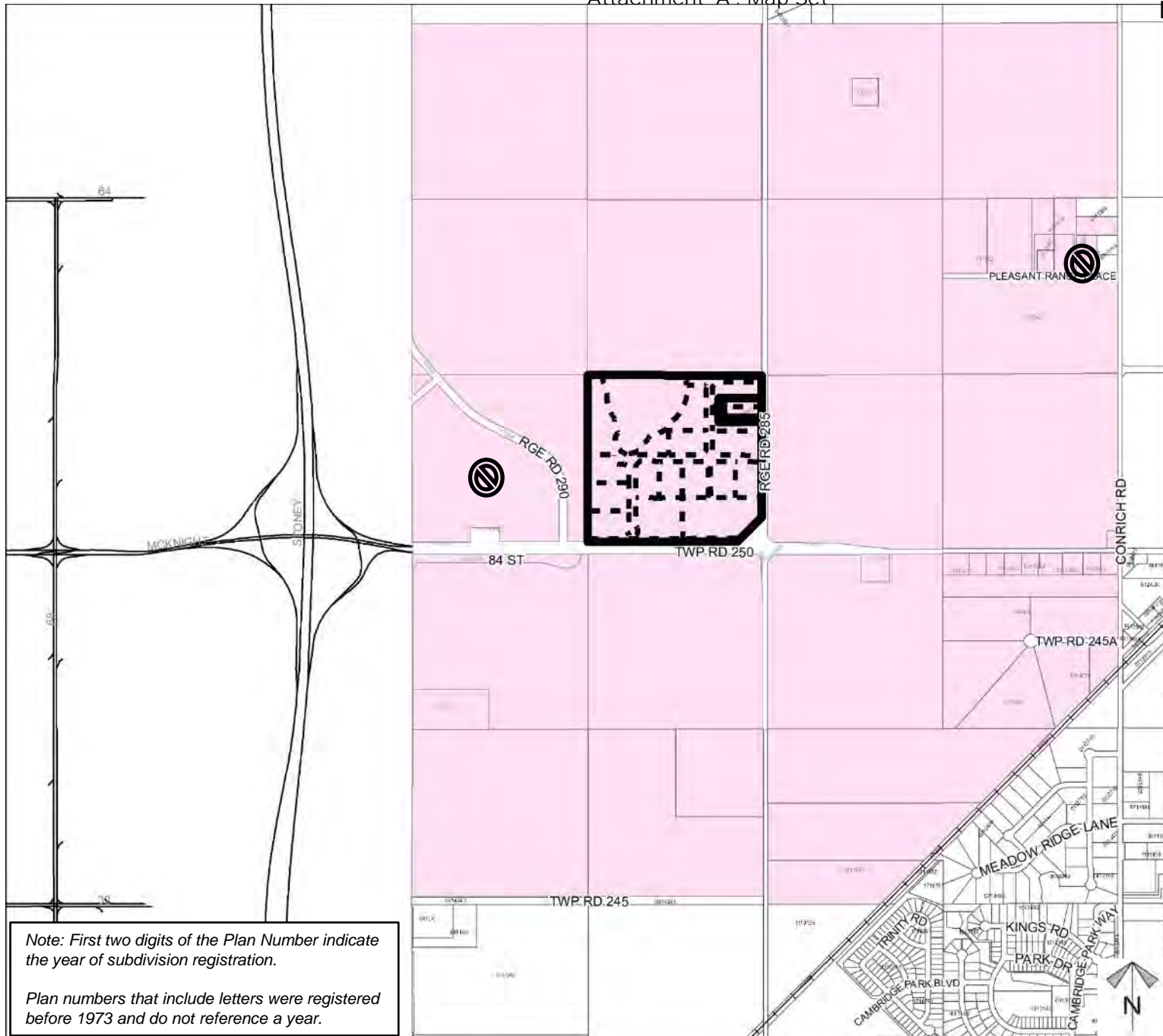
Redesignation Proposal

PL20200151 - To redesignate the subject land from Agricultural, General District (A-GEN) and Agricultural, Small Parcel District (A-SMLp8.1) to Industrial, Light District (I-LHT), Special, Public Service District (S-PUB), Special, Natural Open Space District (S-NOS), Special, Parks and Recreation District (S-PRK), in order to facilitate the development of a full-served industrial park.

Legend

- Support 
- Opposition (2) 

Division: 6
 Roll: 05306005/6001
 File: PL20200150 / PL20200151
 Printed: November 14, 2023
 Legal: A Portion of SE-06-25-28-W04M



Note: First two digits of the Plan Number indicate the year of subdivision registration.

Plan numbers that include letters were registered before 1973 and do not reference a year.