

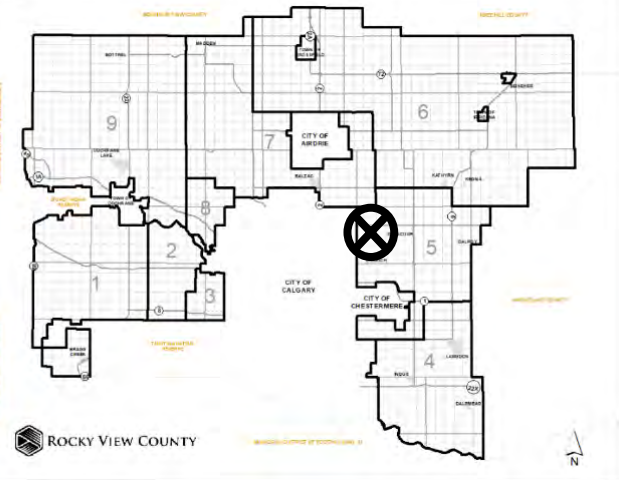


## Location & Context

### Redesignation Proposal

To redesignate the subject parcel from Agricultural, General District (A-GEN) to Special, Future Urban Development District (S-FUD) in order to facilitate a future outdoor storage development (RV trailer storage).

Division: 5  
Roll: 05320002  
File: PL20200164  
Printed: December 8, 2020  
Legal: A portion of SW-20-25-28-W04M







## Development Proposal

### Redesignation Proposal

To redesignate the subject parcel from Agricultural, General District (A-GEN) to Special, Future Urban Development District (S-FUD) in order to facilitate a future outdoor storage development (RV trailer storage).

±56.76 ha  
(±140.26 ac)  
A-GEN → S-FUD

RGE RD 285



Division: 5  
Roll: 05320002  
File: PL20200164  
Printed: December 8, 2020  
Legal: A portion of SW-20-25-28-W04M



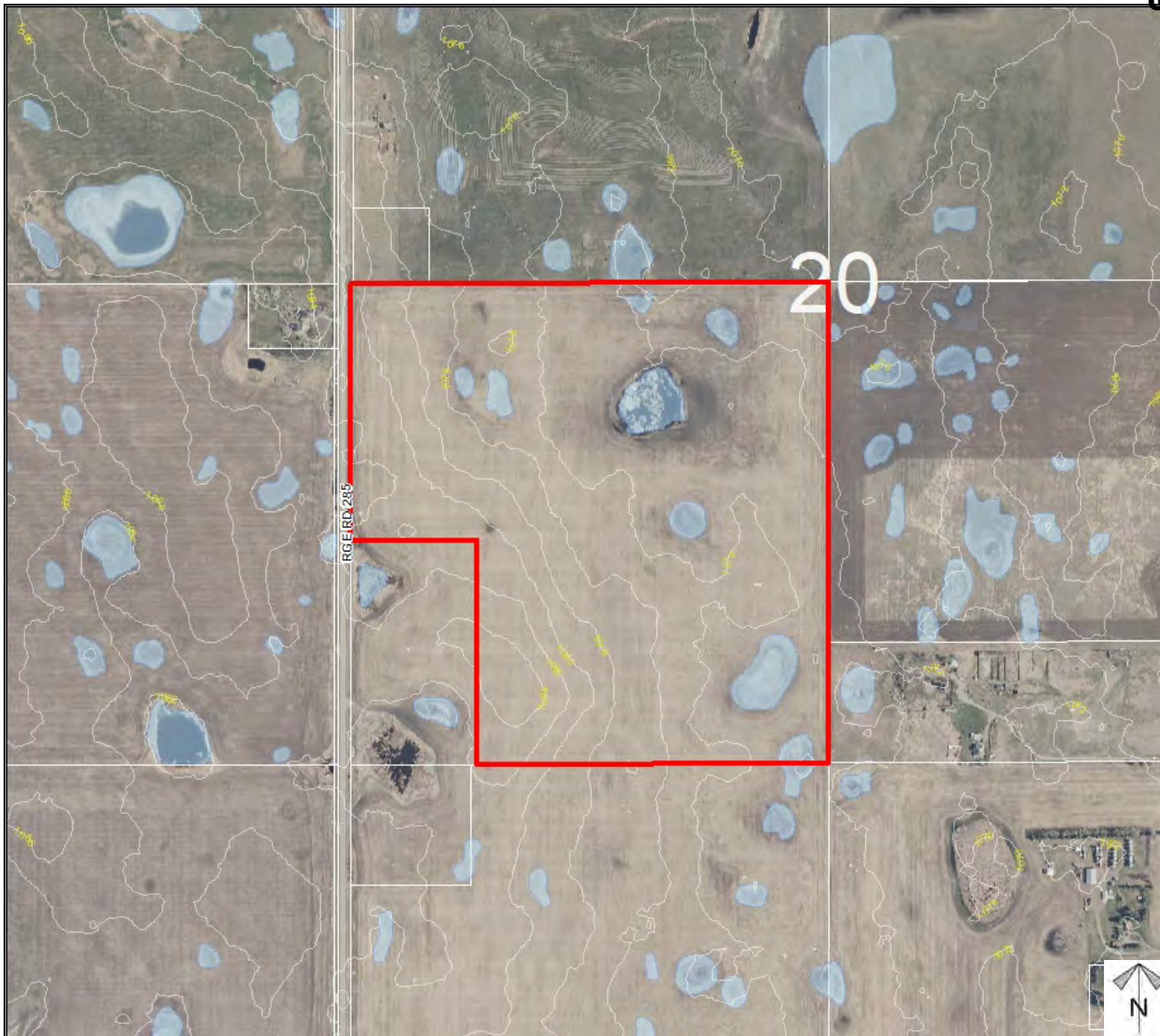
## Environmental

### Redesignation Proposal

To redesignate the subject parcel from Agricultural, General District (A-GEN) to Special, Future Urban Development District (S-FUD) in order to facilitate a future outdoor storage development (RV trailer storage).

-  Subject Lands
-  Contour - 2 meters
-  Riparian Setbacks
-  Alberta Wetland Inventory
-  Surface Water

Division: 5  
 Roll: 05320002  
 File: PL20200164  
 Printed: December 8, 2020  
 Legal: A portion of SW-20-25-28-W04M

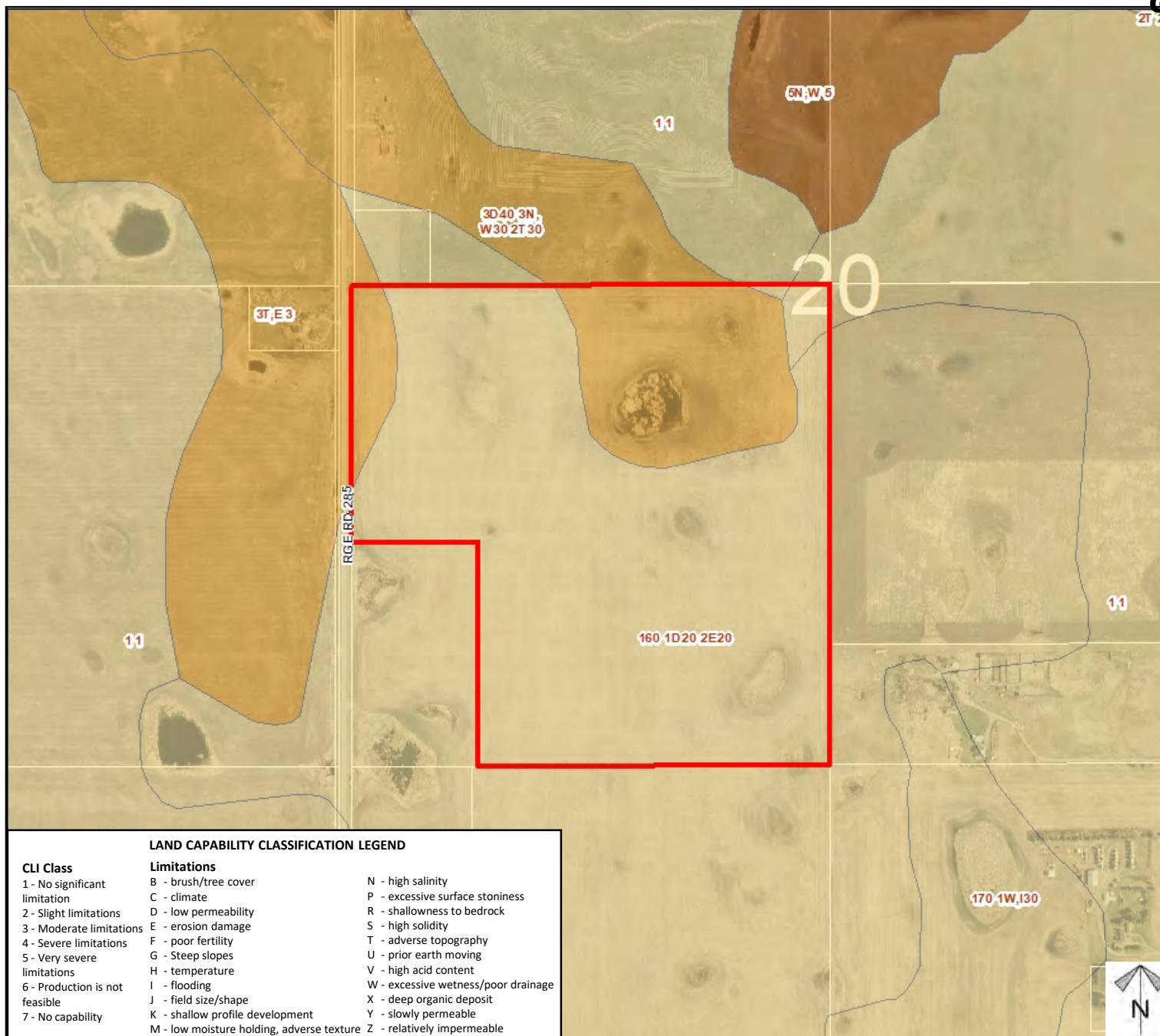




## Soil Classifications

### Redesignation Proposal

To redesignate the subject parcel from Agricultural, General District (A-GEN) to Special, Future Urban Development District (S-FUD) in order to facilitate a future outdoor storage development (RV trailer storage).



Division: 5  
Roll: 05320002  
File: PL20200164  
Printed: December 8, 2020  
Legal: A portion of SW-20-25-28-W04M





## Landowner Circulation Area

### Redesignation Proposal

To redesignate the subject parcel from Agricultural, General District (A-GEN) to Special, Future Urban Development District (S-FUD) in order to facilitate a future outdoor storage development (RV trailer storage).

### Legend

Support



Opposition



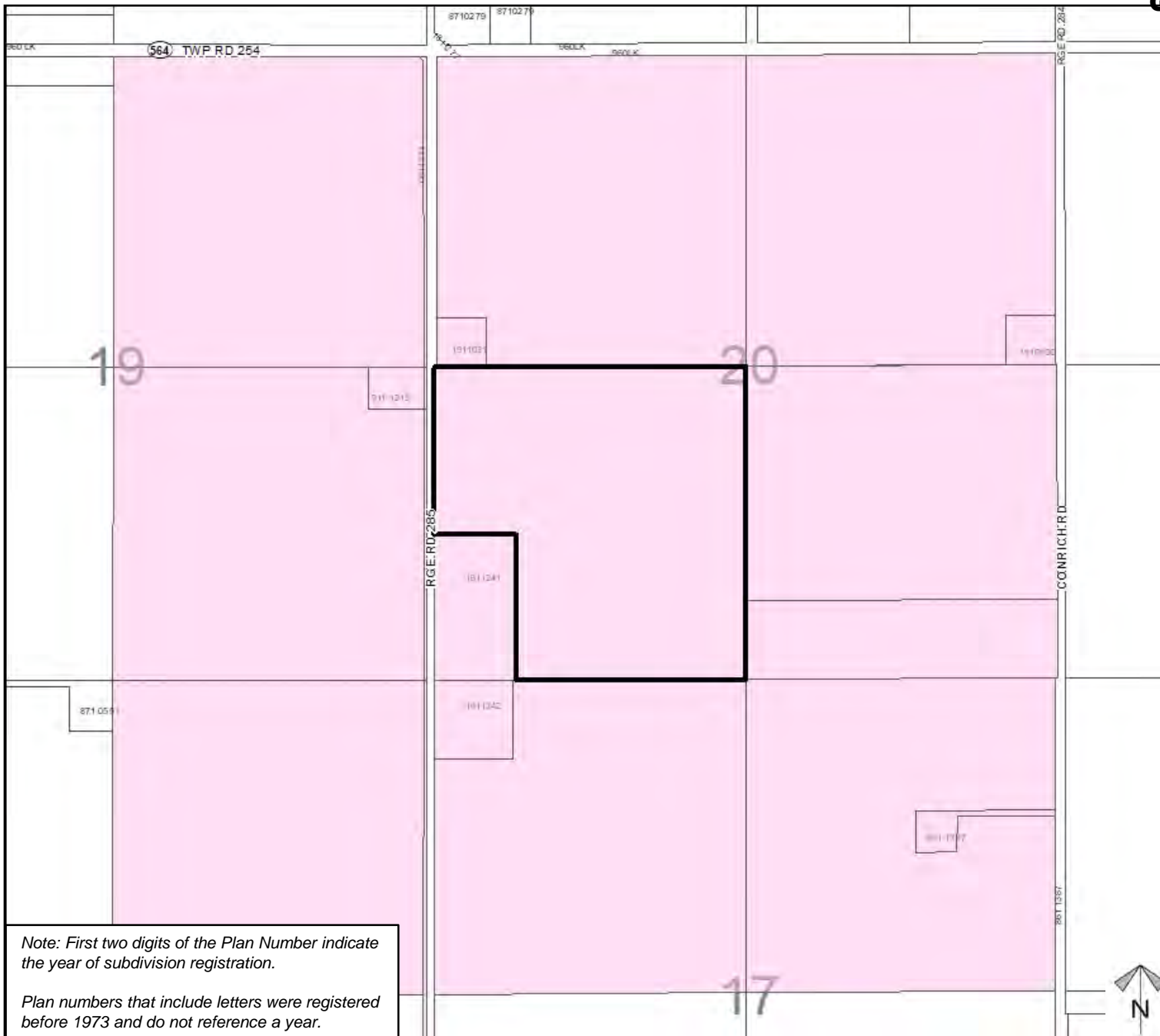
Division: 5

Roll: 05320002

File: PL20200164

Printed: December 8, 2020

Legal: A portion of SW-20-25-28-W04M

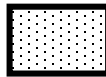


Note: First two digits of the Plan Number indicate the year of subdivision registration.

Plan numbers that include letters were registered before 1973 and do not reference a year.



## Schedule 'A'

Bylaw  
C-8116-2020AmendmentFROMAgricultural, General  
DistrictTOSpecial, Future Urban  
District

±56.76 ha  
(±140.26 ac)  
A-GEN → S-FUD

RGE RD 289



Division: 5

Roll: 05320002

File: PL20200164

Printed: December 8, 2020

Legal: A portion of SW-20-25-  
28-W04M