



Location & Context

Redesignation Proposal

To redesignate a ± 4.22 hectare (± 10.43 acre) portion from Agricultural, General District (A-GEN) to Industrial, Heavy District (I-HVY) to accommodate future subdivision that will result in a business storing construction equipment and gravel; and a ± 2.69 hectare (± 6.64 acre) portion from Agricultural, General District (A-GEN) to Residential, Rural Residential District (R-RUR) to accommodate future subdivision for residential development.

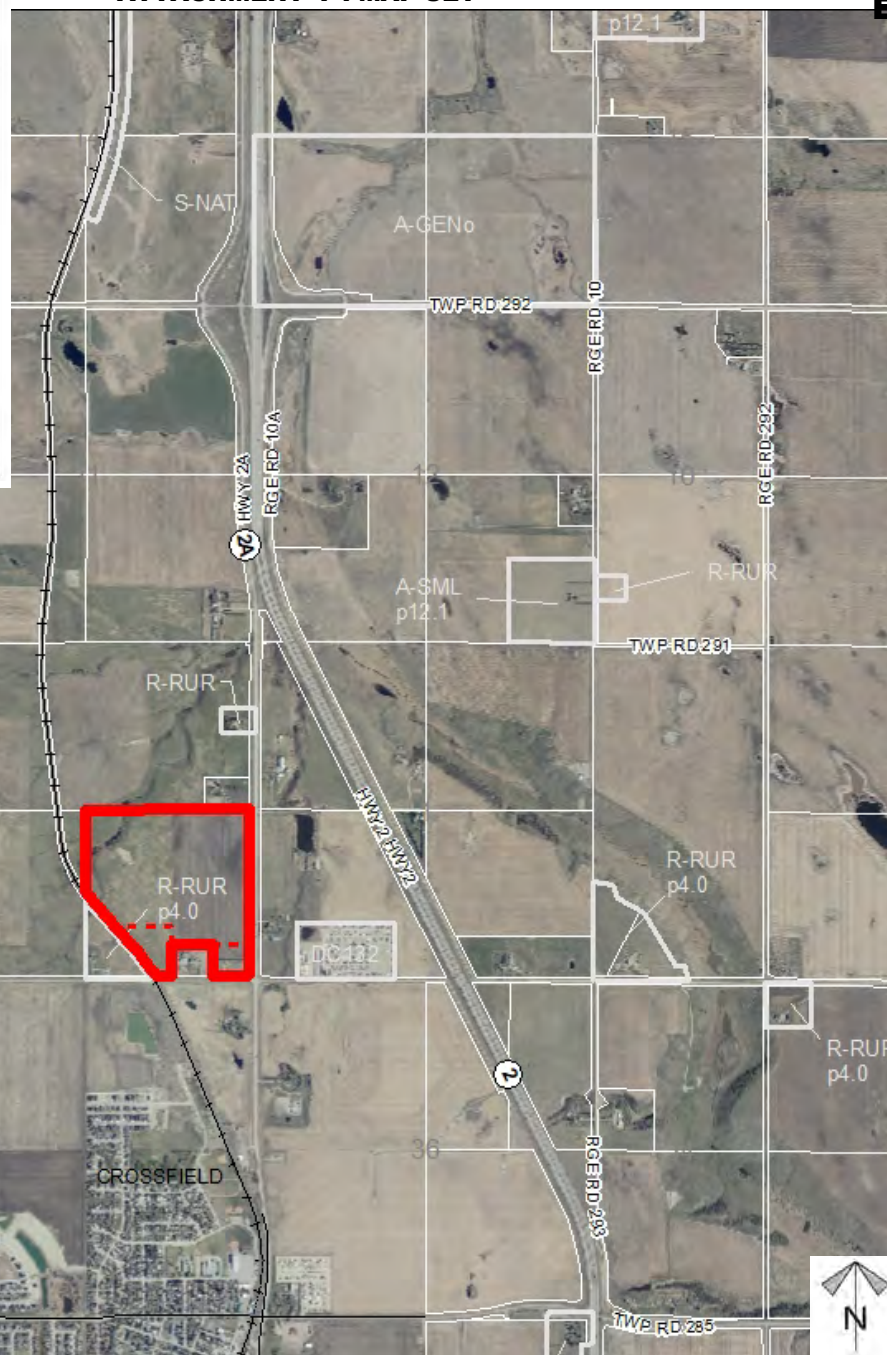
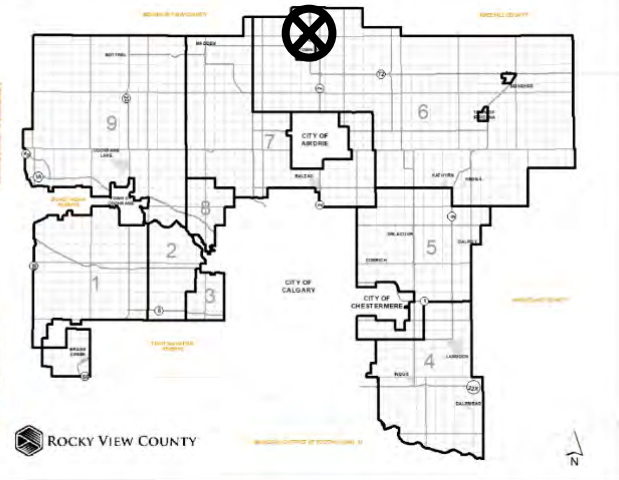
Division: 6

Roll: 09502001

File: PL20200069

Printed: December 14, 2020

Legal: A portion of SE-02-29-01-W05M

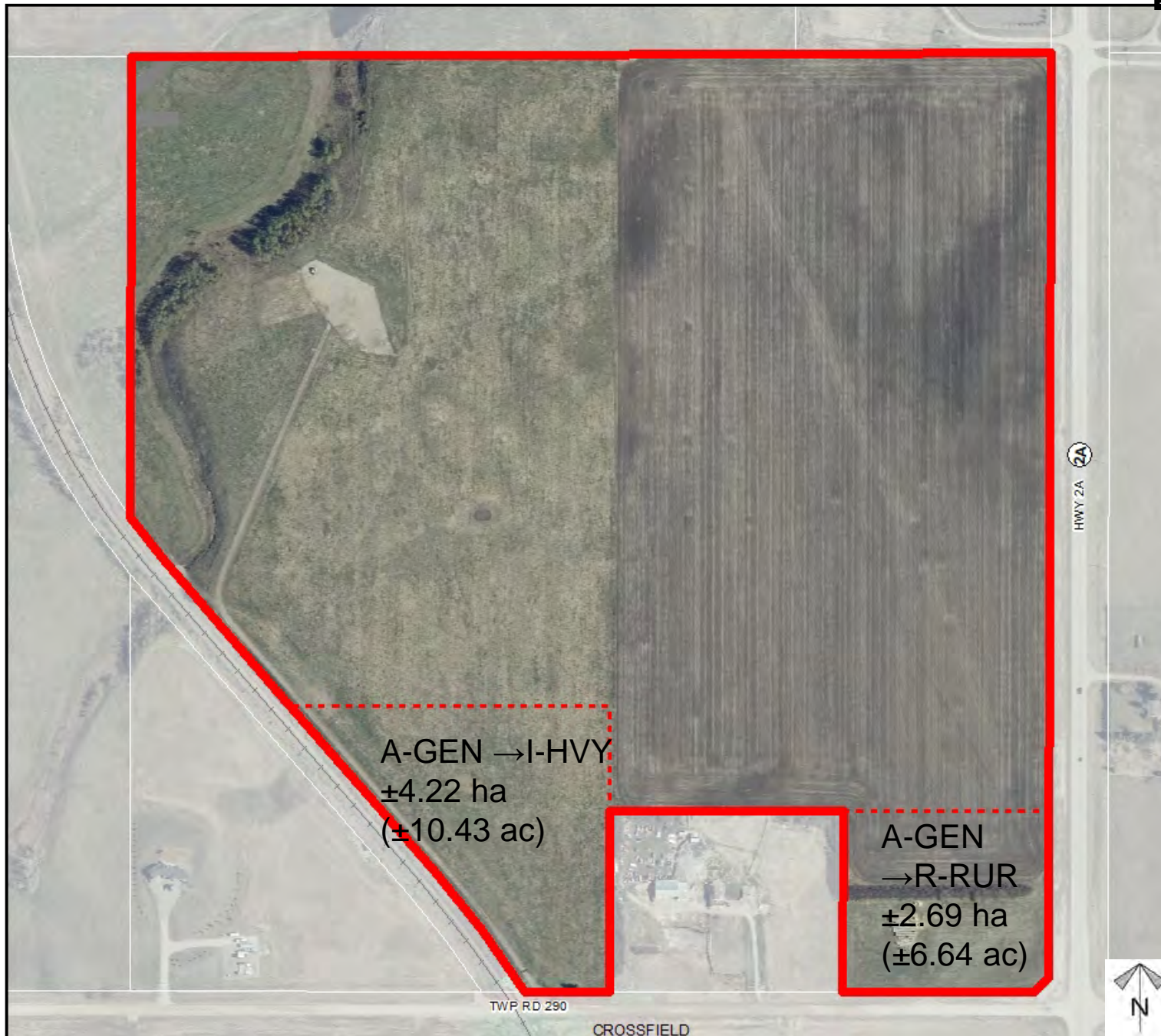




Development Proposal

Redesignation Proposal

To redesignate a ± 4.22 hectare (± 10.43 acre) portion from Agricultural, General District (A-GEN) to Industrial, Heavy District (I-HVY) to accommodate future subdivision that will result in a business storing construction equipment and gravel; and a ± 2.69 hectare (± 6.64 acre) portion from Agricultural, General District (A-GEN) to Residential, Rural Residential District (R-RUR) to accommodate future subdivision for residential development.



Division: 6
Roll: 09502001
File: PL20200069
Printed: December 14, 2020
Legal: A portion of SE-02-29-01-W05M



Environmental

Redesignation Proposal

To redesignate a ± 4.22 hectare (± 10.43 acre) portion from Agricultural, General District (A-GEN) to Industrial, Heavy District (I-HVY) to accommodate future subdivision that will result in a business storing construction equipment and gravel; and a ± 2.69 hectare (± 6.64 acre) portion from Agricultural, General District (A-GEN) to Residential, Rural Residential District (R

-  Subject Lands
-  Contour - 2 meters
-  Riparian Setbacks
-  Alberta Wetland Inventory
-  Surface Water

Division: 6
 Roll: 09502001
 File: PL20200069
 Printed: December 14, 2020
 Legal: A portion of SE-02-29-01-W05M





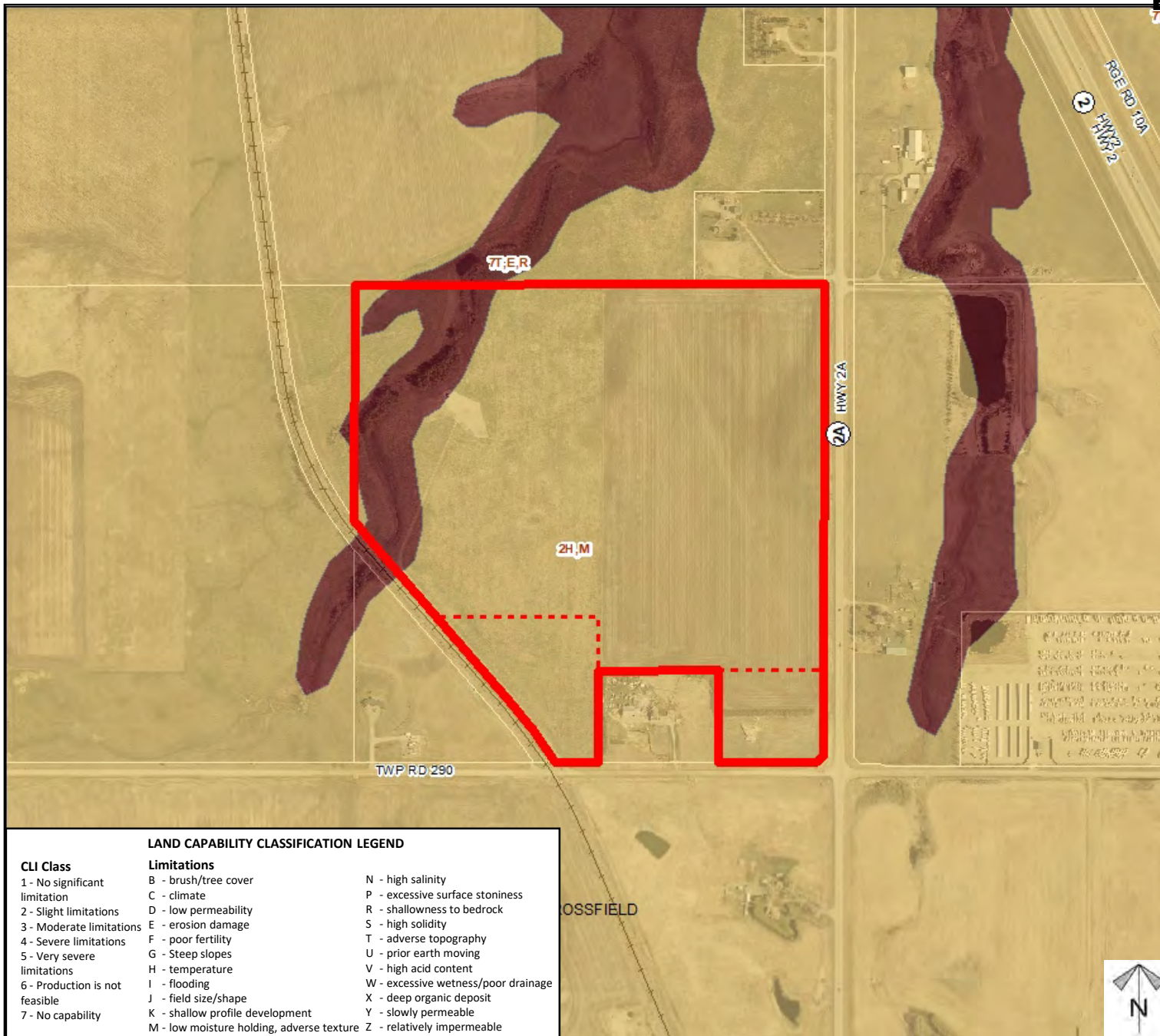
Soil Classifications

Redesignation Proposal

To redesignate a ± 4.22 hectare (± 10.43 acre) portion from Agricultural, General District (A-GEN) to Industrial, Heavy District (I-HVY) to accommodate future subdivision that will result in a business storing construction equipment and gravel; and a ± 2.69 hectare (± 6.64 acre) portion from Agricultural, General District (A-GEN) to Residential, Rural Residential District (R-RUR) to accommodate future subdivision for residential development.

LAND CAPABILITY CLASSIFICATION LEGEND

CLI Class	Limitations	
1 - No significant limitation	B - brush/tree cover	N - high salinity
2 - Slight limitations	C - climate	P - excessive surface stoniness
3 - Moderate limitations	D - low permeability	R - shallowness to bedrock
4 - Severe limitations	E - erosion damage	S - high solidity
5 - Very severe limitations	F - poor fertility	T - adverse topography
6 - Production is not feasible	G - Steep slopes	U - prior earth moving
7 - No capability	H - temperature	V - high acid content
	I - flooding	W - excessive wetness/poor drainage
	J - field size/shape	X - deep organic deposit
	K - shallow profile development	Y - slowly permeable
	M - low moisture holding, adverse texture	Z - relatively impermeable



Division: 6

Roll: 09502001

File: PL20200069

Printed: December 14, 2020

Legal: A portion of SE-02-29-01-W05M

Redesignation Proposal

To redesignate a ± 4.22 hectare (± 10.43 acre) portion from Agricultural, General District (A-GEN) to Industrial, Heavy District (I-HVY) to accommodate future subdivision that will result in a business storing construction equipment and gravel; and a ± 2.69 hectare (± 6.64 acre) portion from Agricultural, General District (A-GEN) to Residential, Rural Residential District (R-RUR) to accommodate future subdivision for residential development.

Legend

Support



Opposition



Division: 6

Roll: 09502001

File: PL20200069

Printed: December 14, 2020

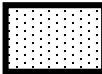
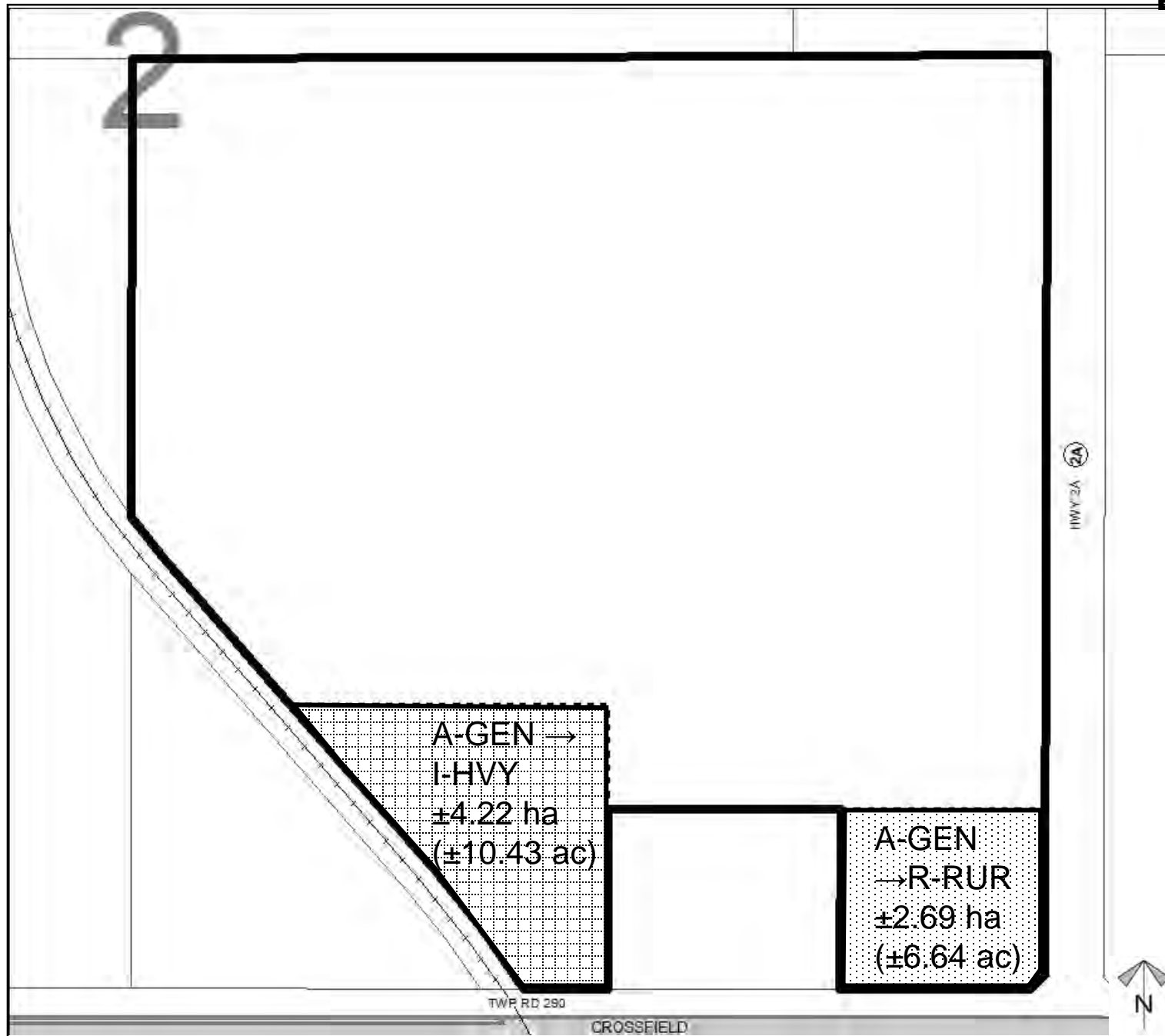
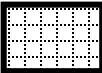
Legal: A portion of SE-02-29-01-W05M

Note: First two digits of the Plan Number indicate the year of subdivision registration.

Plan numbers that include letters were registered before 1973 and do not reference a year.



Schedule 'A'

Bylaw
C-8069-2020AmendmentFROMAgricultural, General
DistrictTOResidential, Rural Residential
DistrictFROMAgricultural, General
DistrictTOIndustrial, Heavy
District

Division: 6
 Roll: 09502001
 File: PL20200069
 Printed: December 14, 2020
 Legal: A portion of SE-02-29-01-W05M